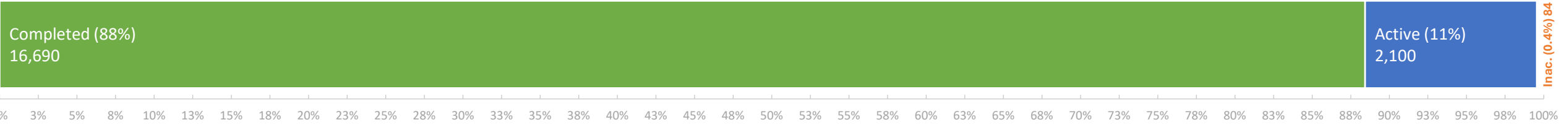


Non-Program Discharge Statuses

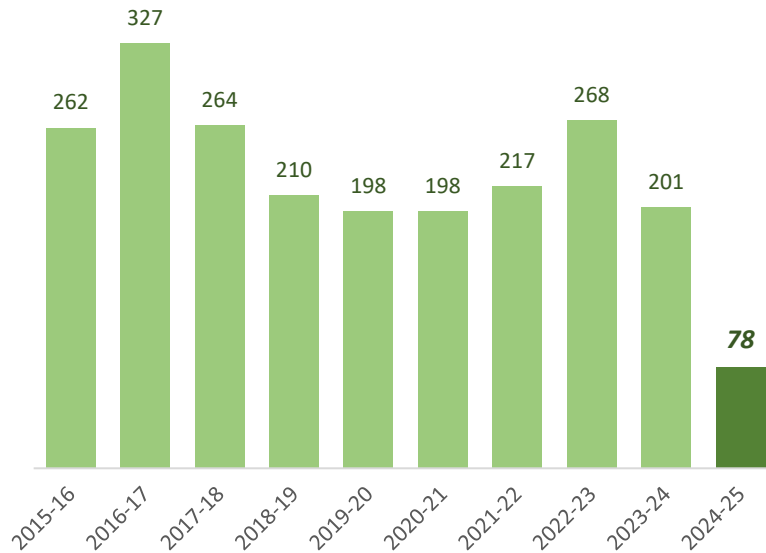
as of February 4, 2025



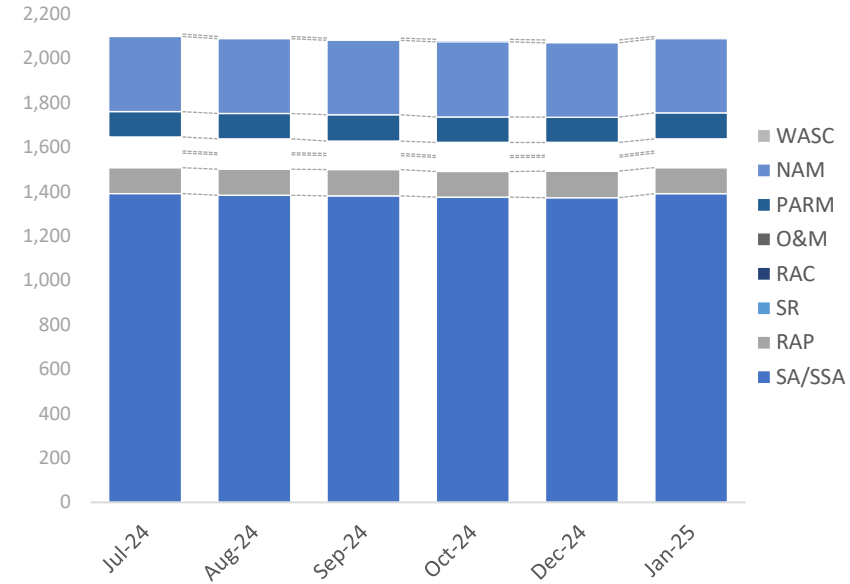
FY24-25 Non-Program Closures by Lead Agency

Closure Type	District	LP	RP TLH	All Closures	% of Closures
LNFA	0	0	0	0	0%
NFA/SRSCO	17	31	3	51	65%
NFAC	2	4	0	6	8%
NREQ	3	9	9	21	27%
Totals	22	44	12	78	100%

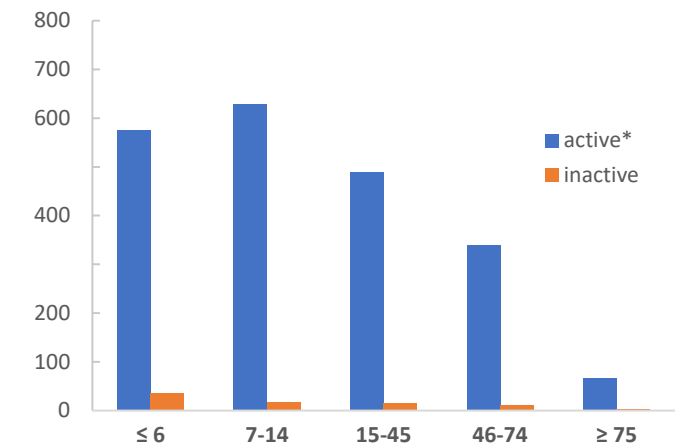
Non-Program Closures by Fiscal Year



Snapshot of Active Non-Program Discharge Sub-Phas



Non-Program Discharges by Score



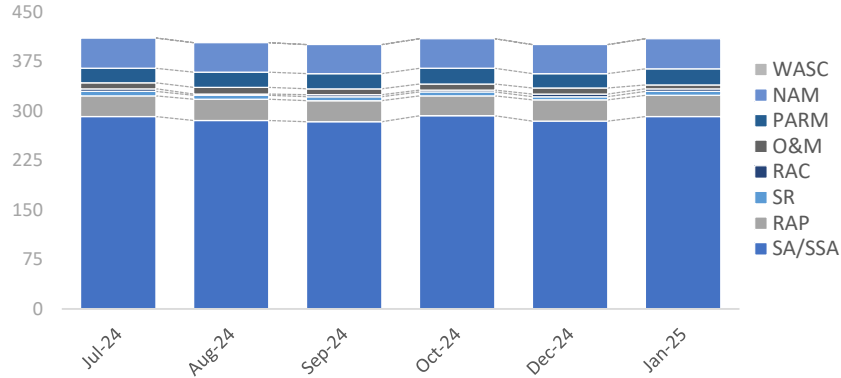
* Discharges with current site managers are considered active.

Sub-Phase	Jul-24	Aug-24	Sep-24	Oct-24	Dec-24	Jan-25	Feb-25	Mar-25	Apr-25	May-25	Jun-25
Site Assessment/Supplemental (SA/SSA)	1,392	1,384	1,381	1,375	1,373	1,391					
Remedial Action Plan (RAP)	116	118	119	116	120	118					
Source Removal (SR)	66	65	63	63	62	65					
Remedial Action Construction (RAC)	10	9	10	9	9	10					
Operation & Maintenance (O&M)	63	62	56	59	58	54					
Post Active Remedial Monitoring (PARM)	114	114	118	115	114	117					
Natural Attenuation Monitoring (NAM)	339	338	336	338	335	334					
Well Abandonment/SRSCO (WASC)	11	10	10	11	13	11					

Non-Program Active Discharge Sub-Phases

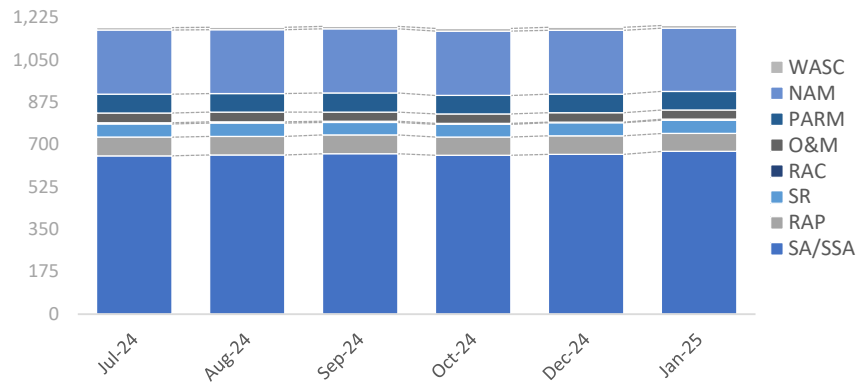
as of February 4, 2025

District Non-Program Active Discharge Sub-Phases



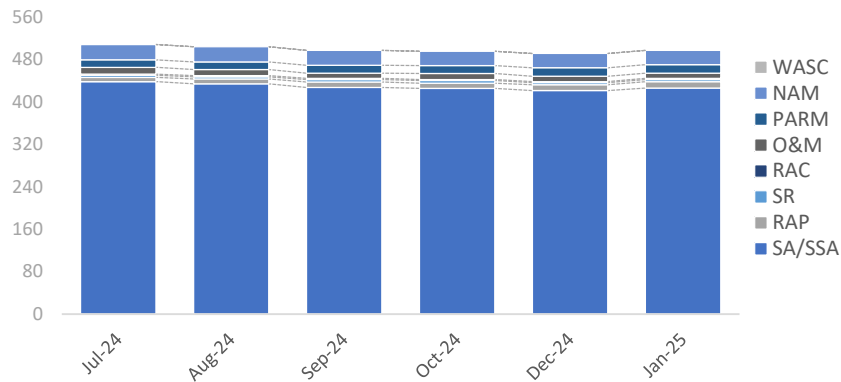
Sub-Phase	Jul-24	Aug-24	Sep-24	Oct-24	Dec-24	Jan-25	Feb-25	Mar-25	Apr-24	May-25	Jun-25
Site Assessment/Supplemental (SA/SSA)	292	286	284	293	285	292					
Remedial Action Plan (RAP)	31	32	32	30	32	32					
Source Removal (SR)	7	6	6	6	5	6					
Remedial Action Construction (RAC)	4	2	3	3	4	4					
Operation & Maintenance (O&M)	9	10	9	9	9	6					
Post Active Remedial Monitoring (PARM)	22	23	23	24	22	24					
Natural Attenuation Monitoring (NAM)	46	45	44	45	44	46					
Well Abandonment/SRCO (WASC)	0	0	0	0	0	0					
Total	411	404	401	410	401	410					

LP Non-Program Active Discharge Sub-Phases



Sub-Phase	Jul-24	Aug-24	Sep-24	Oct-24	Dec-24	Jan-25	Feb-25	Mar-25	Apr-24	May-25	Jun-25
Site Assessment/Supplemental (SA/SSA)	654	657	663	656	660	672					
Remedial Action Plan (RAP)	77	77	77	76	77	74					
Source Removal (SR)	55	55	52	52	53	55					
Remedial Action Construction (RAC)	4	5	5	4	3	4					
Operation & Maintenance (O&M)	41	40	37	39	39	38					
Post Active Remedial Monitoring (PARM)	78	77	80	76	76	77					
Natural Attenuation Monitoring (NAM)	264	264	264	266	264	261					
Well Abandonment/SRCO (WASC)	11	10	10	11	13	11					
Total	1,184	1,185	1,188	1,180	1,185	1,192					

RP/TLH Non-Program Active Discharge Sub-Phases



Sub-Phase	Jul-24	Aug-24	Sep-24	Oct-24	Dec-24	Jan-25	Feb-25	Mar-25	Apr-24	May-25	Jun-25
Site Assessment/Supplemental (SA/SSA)	439	435	428	426	422	427					
Remedial Action Plan (RAP)	8	9	10	10	11	12					
Source Removal (SR)	4	4	5	5	4	4					
Remedial Action Construction (RAC)	2	2	2	2	2	2					
Operation & Maintenance (O&M)	13	12	10	11	10	10					
Post Active Remedial Monitoring (PARM)	14	14	15	15	16	16					
Natural Attenuation Monitoring (NAM)	29	29	28	27	27	27					
Well Abandonment/SRCO (WASC)	0	0	0	0	0	0					
Total	509	505	498	496	492	498					