

Non-Program Discharge Statuses

as of April 2, 2025

Completed (88%)
16,718

Active (11%)
2,080

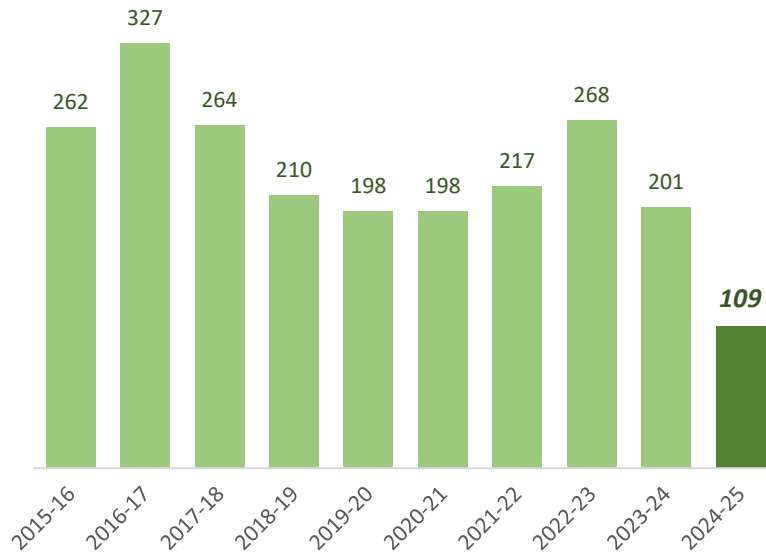
Inac. (0.5%) 94



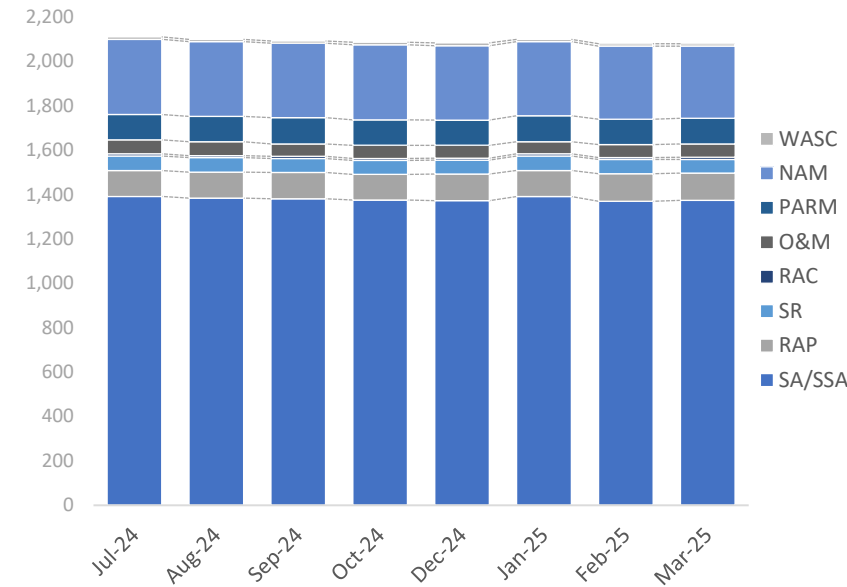
FY24-25 Non-Program Closures by Lead Agency

Closure Type	District	LP	RP TLH	All Closures	% of Closures
LNFA	0	0	0	0	0%
NFA/SRSCO	21	46	4	71	65%
NFAC	2	4	0	6	6%
NREQ	5	16	11	32	29%
Totals	28	66	15	109	100%

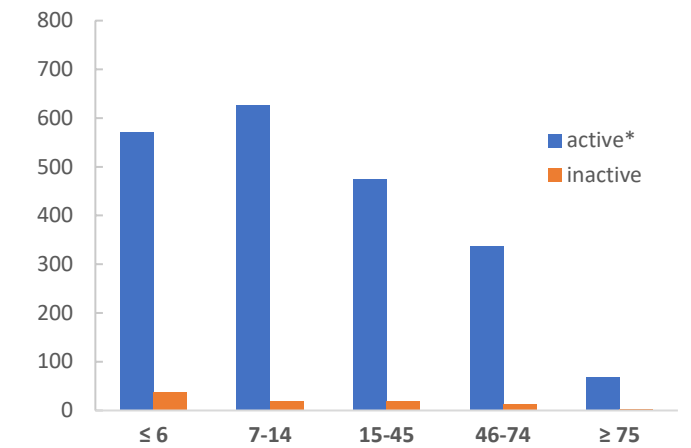
Non-Program Closures by Fiscal Year



Snapshot of Active Non-Program Discharge Sub-Phas



Non-Program Discharges by Score



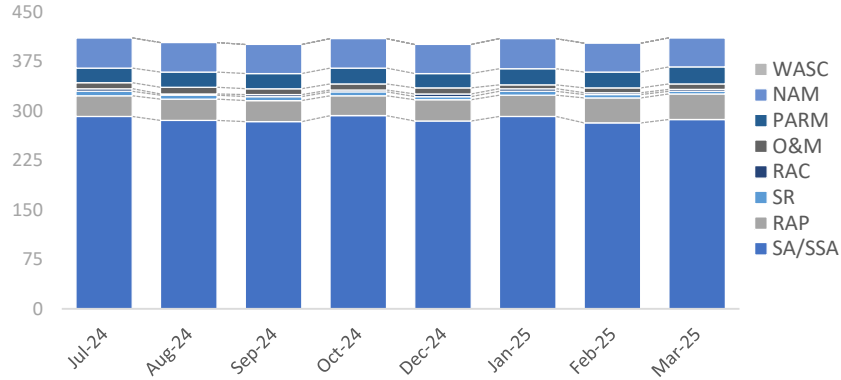
* Discharges with current site managers are considered active.

Sub-Phase	Jul-24	Aug-24	Sep-24	Oct-24	Dec-24	Jan-25	Feb-25	Mar-25	Apr-25	May-25	Jun-25
Site Assessment/Supplemental (SA/SSA)	1,392	1,384	1,381	1,375	1,373	1,391	1,370	1,374			
Remedial Action Plan (RAP)	116	118	119	116	120	118	124	123			
Source Removal (SR)	66	65	63	63	62	65	64	62			
Remedial Action Construction (RAC)	10	9	10	9	9	10	9	10			
Operation & Maintenance (O&M)	63	62	56	59	58	54	59	60			
Post Active Remedial Monitoring (PARM)	114	114	118	115	114	117	114	115			
Natural Attenuation Monitoring (NAM)	339	338	336	338	335	334	329	325			
Well Abandonment/SRSCO (WASC)	11	10	10	11	13	11	11	11			

Non-Program Active Discharge Sub-Phases

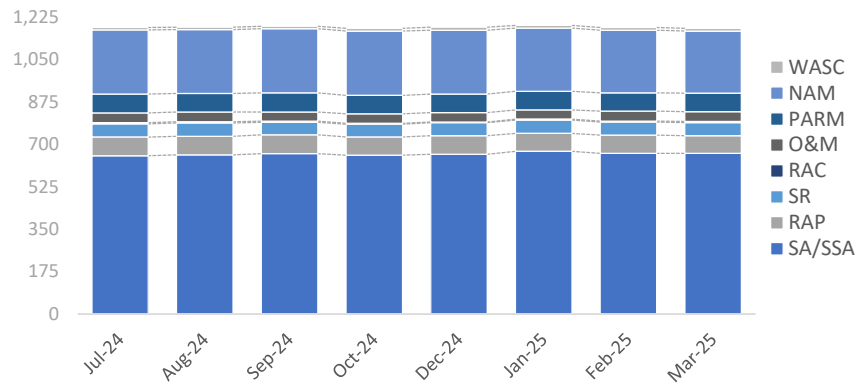
as of April 2, 2025

District Non-Program Active Discharge Sub-Phases



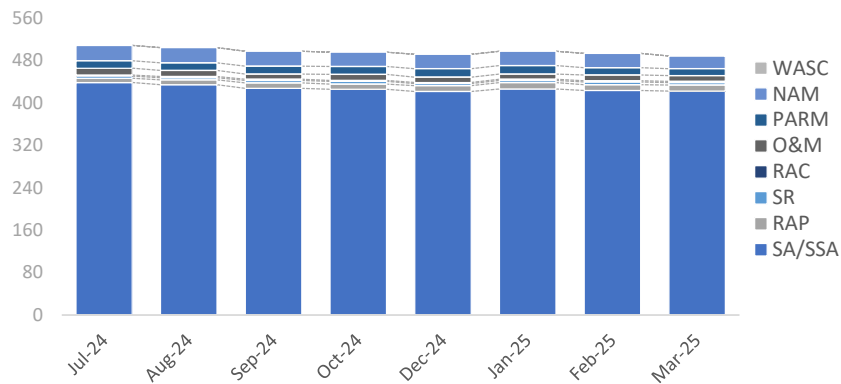
Sub-Phase	Jul-24	Aug-24	Sep-24	Oct-24	Dec-24	Jan-25	Feb-25	Mar-25	Apr-24	May-25	Jun-25
Site Assessment/Supplemental (SA/SSA)	292	286	284	293	285	292	282	287			
Remedial Action Plan (RAP)	31	32	32	30	32	32	38	39			
Source Removal (SR)	7	6	6	6	5	6	5	4			
Remedial Action Construction (RAC)	4	2	3	3	4	4	3	3			
Operation & Maintenance (O&M)	9	10	9	9	9	6	7	8			
Post Active Remedial Monitoring (PARM)	22	23	23	24	22	24	24	26			
Natural Attenuation Monitoring (NAM)	46	45	44	45	44	46	44	44			
Well Abandonment/SRCO (WASC)	0	0	0	0	0	0	0	0			
Total	411	404	401	410	401	410	403	411			

LP Non-Program Active Discharge Sub-Phases



Sub-Phase	Jul-24	Aug-24	Sep-24	Oct-24	Dec-24	Jan-25	Feb-25	Mar-25	Apr-24	May-25	Jun-25
Site Assessment/Supplemental (SA/SSA)	654	657	663	656	660	672	664	664			
Remedial Action Plan (RAP)	77	77	77	76	77	74	75	73			
Source Removal (SR)	55	55	52	52	53	55	54	53			
Remedial Action Construction (RAC)	4	5	5	4	3	4	4	5			
Operation & Maintenance (O&M)	41	40	37	39	39	38	41	41			
Post Active Remedial Monitoring (PARM)	78	77	80	76	76	77	76	76			
Natural Attenuation Monitoring (NAM)	264	264	264	266	264	261	258	257			
Well Abandonment/SRCO (WASC)	11	10	10	11	13	11	11	11			
Total	1,184	1,185	1,188	1,180	1,185	1,192	1,183	1,180			

RP/TLH Non-Program Active Discharge Sub-Phases



Sub-Phase	Jul-24	Aug-24	Sep-24	Oct-24	Dec-24	Jan-25	Feb-25	Mar-25	Apr-24	May-25	Jun-25
Site Assessment/Supplemental (SA/SSA)	439	435	428	426	422	427	424	423			
Remedial Action Plan (RAP)	8	9	10	10	11	12	11	11			
Source Removal (SR)	4	4	5	5	4	4	5	5			
Remedial Action Construction (RAC)	2	2	2	2	2	2	2	2			
Operation & Maintenance (O&M)	13	12	10	11	10	10	11	11			
Post Active Remedial Monitoring (PARM)	14	14	15	15	16	16	14	13			
Natural Attenuation Monitoring (NAM)	29	29	28	27	27	27	27	24			
Well Abandonment/SRCO (WASC)	0	0	0	0	0	0	0	0			
Total	509	505	498	496	492	498	494	489			