

# Non-Program Discharge Statuses

as of June 3, 2025

Completed (89%)  
16,754

Active (11%)  
2,014

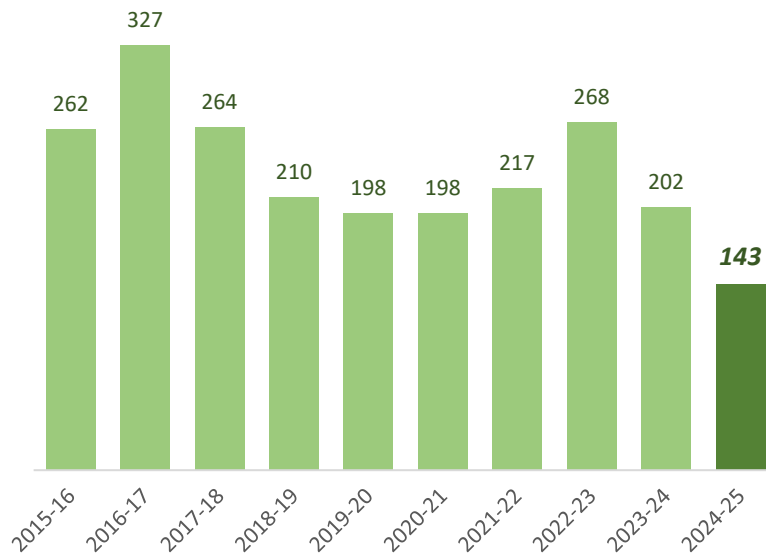
Inac. (0.8%) 157



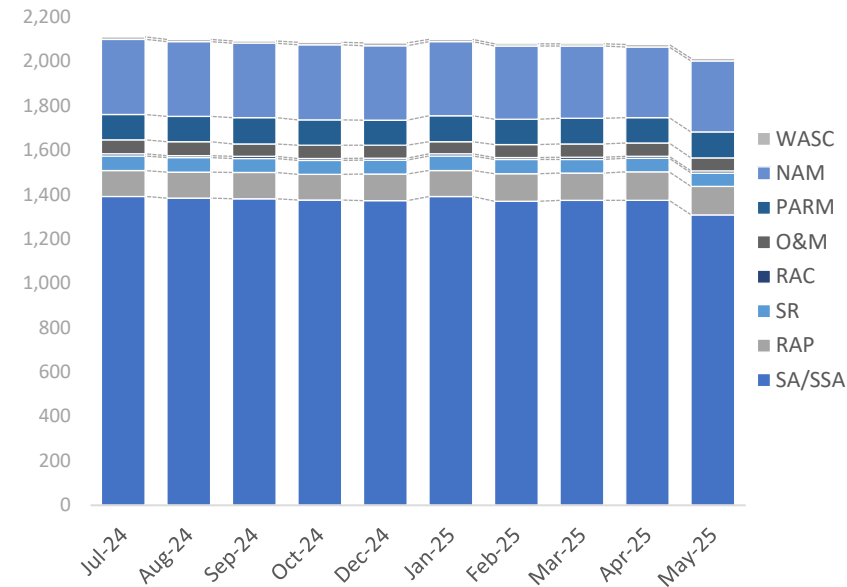
## FY24-25 Non-Program Closures by Lead Agency

Closure Type	District	LP	RP TLH	All Closures	% of Closures
LNFA	2	0	0	2	1%
NFA/SRSCO	28	57	5	90	63%
NFAC	3	5	0	8	6%
NREQ	7	23	13	43	30%
<b>Totals</b>	<b>40</b>	<b>85</b>	<b>18</b>	<b>143</b>	<b>100%</b>

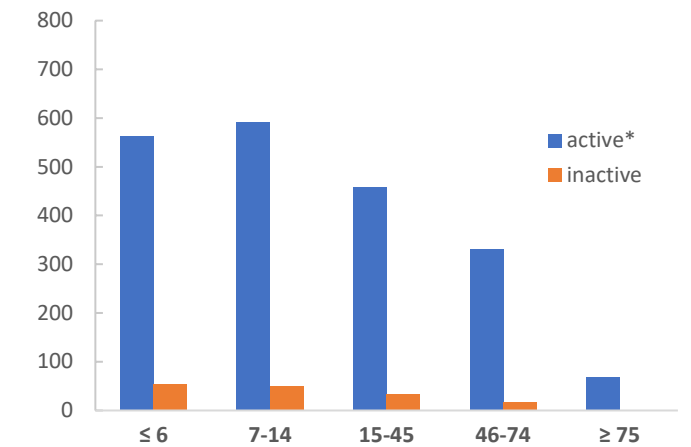
## Non-Program Closures by Fiscal Year



## Active Non-Program Discharge Sub-Phases



## Non-Program Discharges by Score



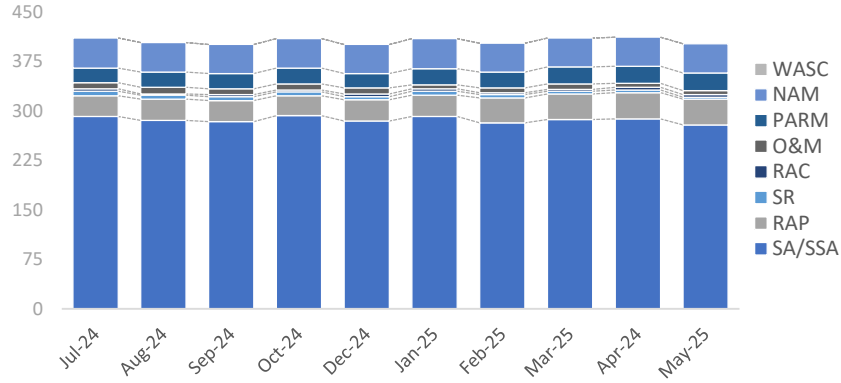
\* Discharges with current site managers are considered active.

Sub-Phase	Jul-24	Aug-24	Sep-24	Oct-24	Dec-24	Jan-25	Feb-25	Mar-25	Apr-25	May-25	Jun-25
Site Assessment/Supplemental (SA/SSA)	1,392	1,384	1,381	1,375	1,373	1,391	1,370	1,374	1,374	1,309	
Remedial Action Plan (RAP)	116	118	119	116	120	118	124	123	129	128	
Source Removal (SR)	66	65	63	63	62	65	64	62	61	60	
Remedial Action Construction (RAC)	10	9	10	9	9	10	9	10	9	10	
Operation & Maintenance (O&M)	63	62	56	59	58	54	59	60	59	58	
Post Active Remedial Monitoring (PARM)	114	114	118	115	114	117	114	115	115	117	
Natural Attenuation Monitoring (NAM)	339	338	336	338	335	334	329	325	318	320	
Well Abandonment/SRSCO (WASC)	11	10	10	11	13	11	11	11	11	12	

# Non-Program Active Discharge Sub-Phases

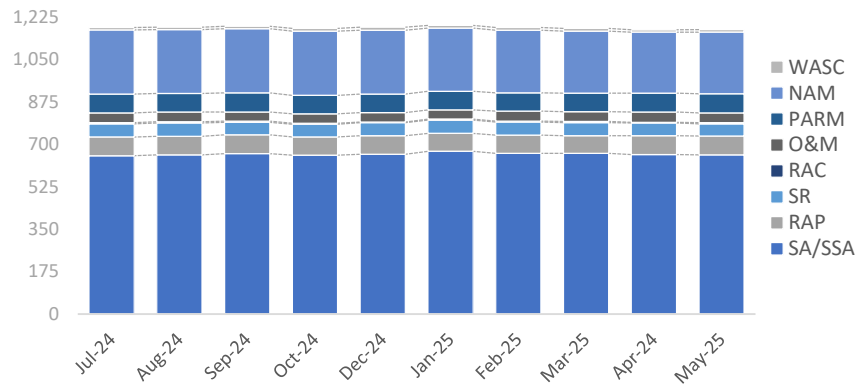
as of June 3, 2025

## District Non-Program Active Discharge Sub-Phases



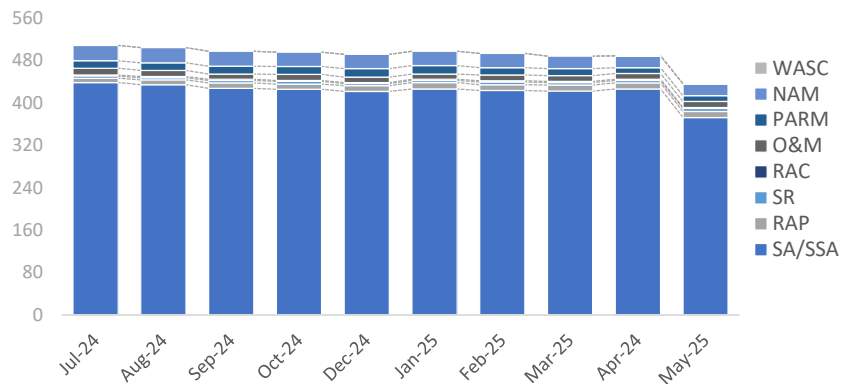
Sub-Phase	Jul-24	Aug-24	Sep-24	Oct-24	Dec-24	Jan-25	Feb-25	Mar-25	Apr-24	May-25	Jun-25
Site Assessment/Supplemental (SA/SSA)	292	286	284	293	285	292	282	287	288	279	
Remedial Action Plan (RAP)	31	32	32	30	32	32	38	39	40	39	
Source Removal (SR)	7	6	6	6	5	6	5	4	4	3	
Remedial Action Construction (RAC)	4	2	3	3	4	4	3	3	4	4	
Operation & Maintenance (O&M)	9	10	9	9	9	6	7	8	6	6	
Post Active Remedial Monitoring (PARM)	22	23	23	24	22	24	24	26	26	27	
Natural Attenuation Monitoring (NAM)	46	45	44	45	44	46	44	44	44	44	
Well Abandonment/SRCO (WASC)	0	0	0	0	0	0	0	0	0	0	
<b>Total</b>	<b>411</b>	<b>404</b>	<b>401</b>	<b>410</b>	<b>401</b>	<b>410</b>	<b>403</b>	<b>411</b>	<b>412</b>	<b>402</b>	

## LP Non-Program Active Discharge Sub-Phases



Sub-Phase	Jul-24	Aug-24	Sep-24	Oct-24	Dec-24	Jan-25	Feb-25	Mar-25	Apr-24	May-25	Jun-25
Site Assessment/Supplemental (SA/SSA)	654	657	663	656	660	672	664	664	659	657	
Remedial Action Plan (RAP)	77	77	77	76	77	74	75	73	78	78	
Source Removal (SR)	55	55	52	52	53	55	54	53	52	51	
Remedial Action Construction (RAC)	4	5	5	4	3	4	4	5	3	4	
Operation & Maintenance (O&M)	41	40	37	39	39	38	41	41	42	41	
Post Active Remedial Monitoring (PARM)	78	77	80	76	76	77	76	76	78	79	
Natural Attenuation Monitoring (NAM)	264	264	264	266	264	261	258	257	252	254	
Well Abandonment/SRCO (WASC)	11	10	10	11	13	11	11	11	10	11	
<b>Total</b>	<b>1,184</b>	<b>1,185</b>	<b>1,188</b>	<b>1,180</b>	<b>1,185</b>	<b>1,192</b>	<b>1,183</b>	<b>1,180</b>	<b>1,174</b>	<b>1,175</b>	

## RP/TLH Non-Program Active Discharge Sub-Phases



Sub-Phase	Jul-24	Aug-24	Sep-24	Oct-24	Dec-24	Jan-25	Feb-25	Mar-25	Apr-24	May-25	Jun-25
Site Assessment/Supplemental (SA/SSA)	439	435	428	426	422	427	424	423	427	373	
Remedial Action Plan (RAP)	8	9	10	10	11	12	11	11	11	11	
Source Removal (SR)	4	4	5	5	4	4	5	5	5	6	
Remedial Action Construction (RAC)	2	2	2	2	2	2	2	2	2	2	
Operation & Maintenance (O&M)	13	12	10	11	10	10	11	11	11	11	
Post Active Remedial Monitoring (PARM)	14	14	15	15	16	16	14	13	11	11	
Natural Attenuation Monitoring (NAM)	29	29	28	27	27	27	27	24	22	22	
Well Abandonment/SRCO (WASC)	0	0	0	0	0	0	0	0	1	1	
<b>Total</b>	<b>509</b>	<b>505</b>	<b>498</b>	<b>496</b>	<b>492</b>	<b>498</b>	<b>494</b>	<b>489</b>	<b>490</b>	<b>437</b>	