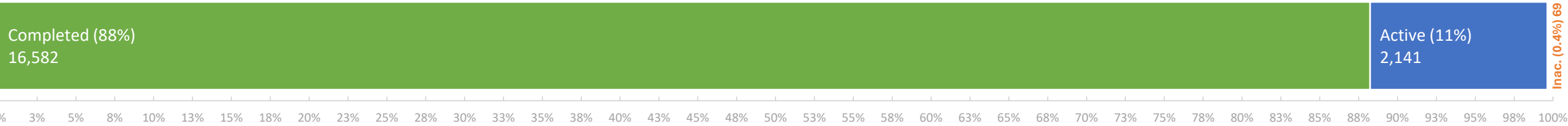


Non-Program Discharge Statuses

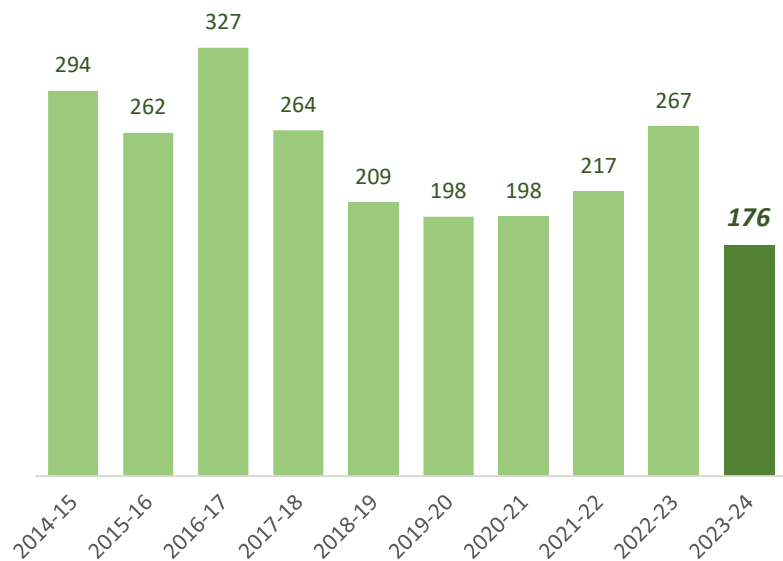
as of June 2, 2024



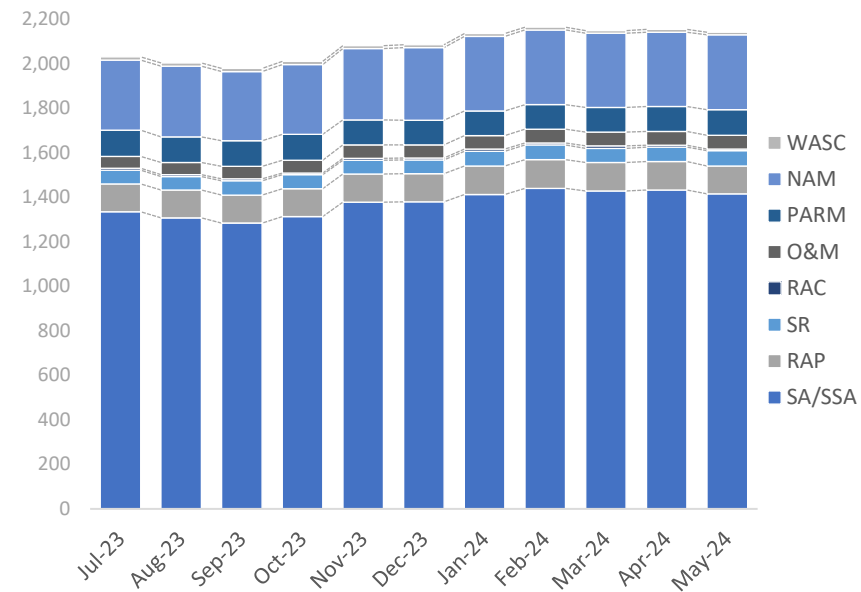
FY23-24 Non-Program Closures by Lead Agency

Closure Type	District	LP	RP TLH	All Closures	% of Closures
LNFA	0	0	0	0	0%
NFA/SRCO	41	62	4	107	61%
NFAC	2	2	2	6	3%
NREQ	35	20	8	63	36%
Totals	78	84	14	176	100%

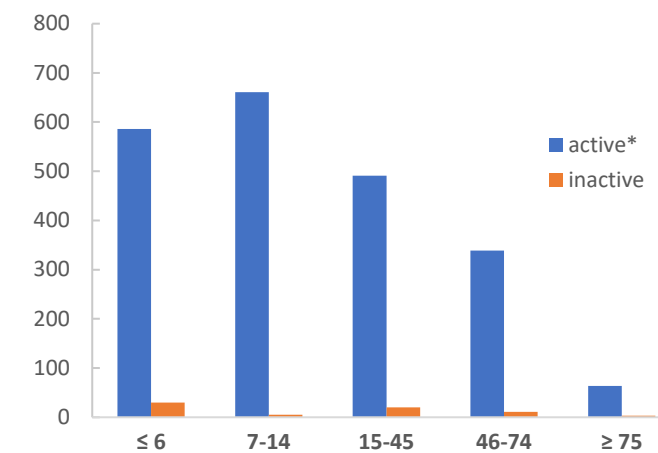
Non-Program Closures by Fiscal Year



Snapshot of Active Non-Program Discharge Sub-Phase



Non-Program Discharges by Score



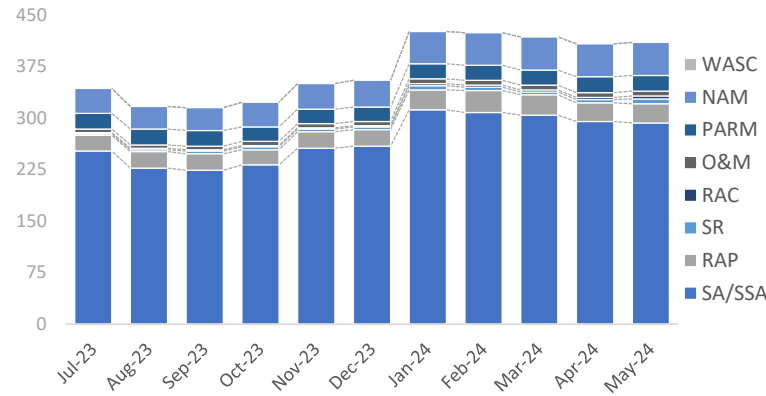
* Discharges with current site managers are considered active.

Sub-Phase	Jul-23	Aug-23	Sep-23	Oct-23	Nov-23	Dec-23	Jan-24	Feb-24	Mar-24	Apr-24	May-24	Jun-24
Site Assessment/Supplemental (SA/SSA)	1,335	1,307	1,284	1,313	1,378	1,380	1,412	1,440	1,428	1,433	1,416	
Remedial Action Plan (RAP)	125	125	126	126	127	126	129	129	128	127	125	
Source Removal (SR)	62	61	64	62	62	62	66	66	63	65	68	
Remedial Action Construction (RAC)	9	9	9	8	8	8	9	9	12	9	8	
Operation & Maintenance (O&M)	53	54	56	58	60	59	61	62	62	62	62	
Post Active Remedial Monitoring (PARM)	117	116	115	116	113	111	111	110	110	112	115	
Natural Attenuation Monitoring (NAM)	315	317	311	313	320	326	335	336	334	334	336	
Well Abandonment/SRCO (WASC)	15	14	14	14	13	13	13	12	12	12	11	

Non-Program Active Discharge Sub-Phases

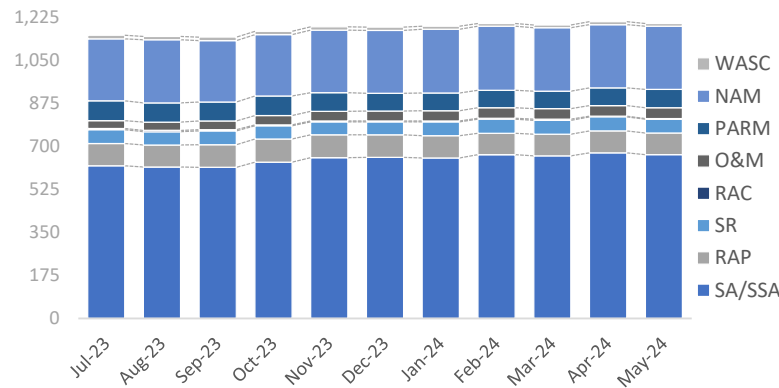
as of June 2, 2024

District Non-Program Active Discharge Sub-Phases



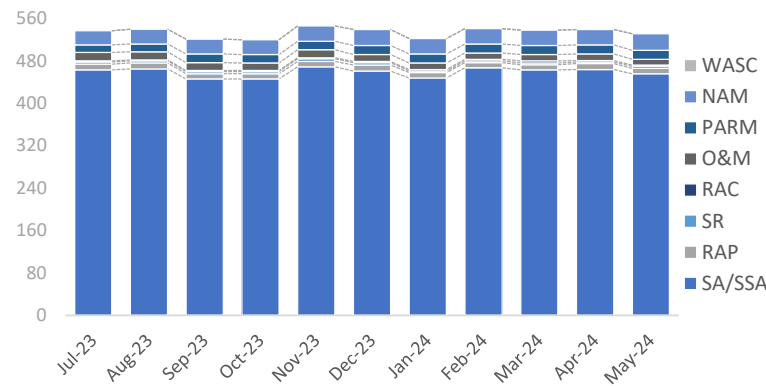
Sub-Phase	Jul-23	Aug-23	Sep-23	Oct-23	Nov-23	Dec-23	Jan-24	Feb-24	Mar-24	Apr-24	May-24	Jun-24
Site Assessment/Supplemental (SA/SSA)	252	227	224	232	256	259	312	308	304	295	293	
Remedial Action Plan (RAP)	23	24	24	22	24	24	29	32	30	27	28	
Source Removal (SR)	2	3	4	4	4	4	6	5	4	5	7	
Remedial Action Construction (RAC)	2	2	2	2	2	2	3	3	3	3	4	
Operation & Maintenance (O&M)	5	5	5	6	6	6	7	7	7	7	7	
Post Active Remedial Monitoring (PARM)	23	23	23	21	21	21	22	22	22	23	23	
Natural Attenuation Monitoring (NAM)	36	33	33	36	37	39	47	47	48	48	48	
Well Abandonment/SRCO (WASC)	0	0	0	0	0	0	0	0	0	0	0	
Total	343	317	315	323	350	355	426	424	418	408	410	

LP Non-Program Active Discharge Sub-Phases



Sub-Phase	Jul-23	Aug-23	Sep-23	Oct-23	Nov-23	Dec-23	Jan-24	Feb-24	Mar-24	Apr-24	May-24	Jun-24
Site Assessment/Supplemental (SA/SSA)	620	615	614	635	653	655	652	665	661	673	666	
Remedial Action Plan (RAP)	91	90	92	94	93	91	90	87	88	89	87	
Source Removal (SR)	56	54	56	54	53	53	57	58	56	57	57	
Remedial Action Construction (RAC)	5	5	5	4	4	4	3	3	5	3	2	
Operation & Maintenance (O&M)	32	34	36	38	39	40	42	43	43	43	44	
Post Active Remedial Monitoring (PARM)	80	78	76	79	76	72	72	71	71	72	75	
Natural Attenuation Monitoring (NAM)	252	256	250	249	254	256	259	260	257	257	257	
Well Abandonment/SRCO (WASC)	15	14	14	14	13	13	13	12	12	12	11	
Total	1,151	1,146	1,143	1,167	1,185	1,184	1,188	1,199	1,193	1,206	1,199	

RP/TLH Non-Program Active Discharge Sub-Phases



Sub-Phase	Jul-23	Aug-23	Sep-23	Oct-23	Nov-23	Dec-23	Jan-24	Feb-24	Mar-24	Apr-24	May-24	Jun-24
Site Assessment/Supplemental (SA/SSA)	463	465	446	446	469	461	448	467	463	464	456	
Remedial Action Plan (RAP)	11	11	10	10	10	11	10	10	10	11	10	
Source Removal (SR)	4	4	4	4	5	5	3	3	3	3	4	
Remedial Action Construction (RAC)	2	2	2	2	2	2	3	3	4	3	2	
Operation & Maintenance (O&M)	16	15	15	14	15	13	12	12	12	12	11	
Post Active Remedial Monitoring (PARM)	14	15	16	16	16	17	17	17	17	17	17	
Natural Attenuation Monitoring (NAM)	27	28	28	28	29	30	29	29	29	29	31	
Well Abandonment/SRCO (WASC)	0	0	0	0	0	0	0	0	0	0	0	
Total	537	540	521	520	546	539	522	541	538	539	531	