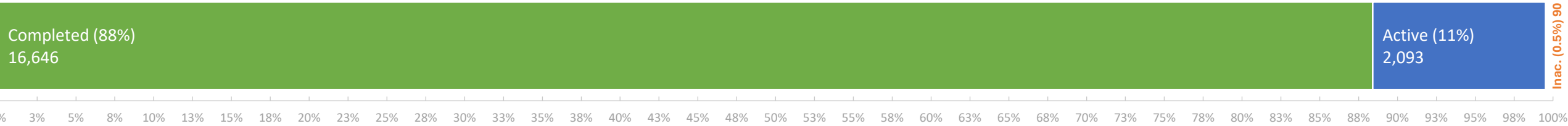


Non-Program Discharge Statuses

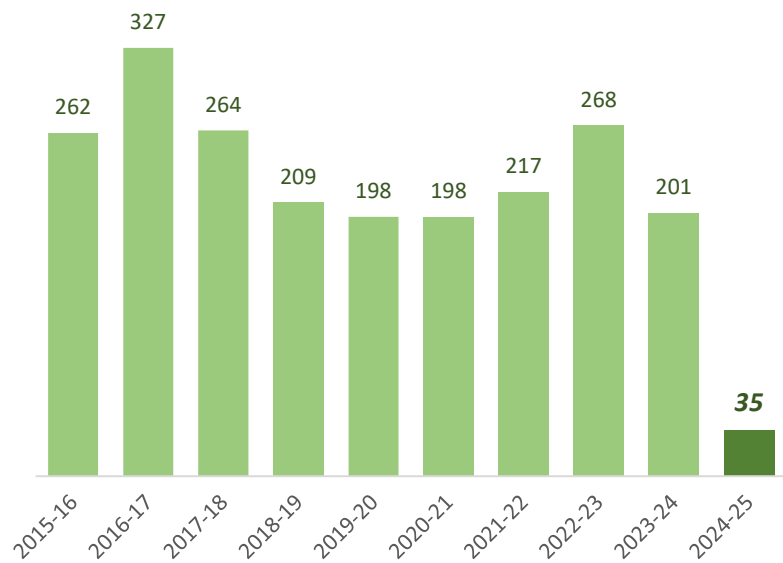
as of October 3, 2024



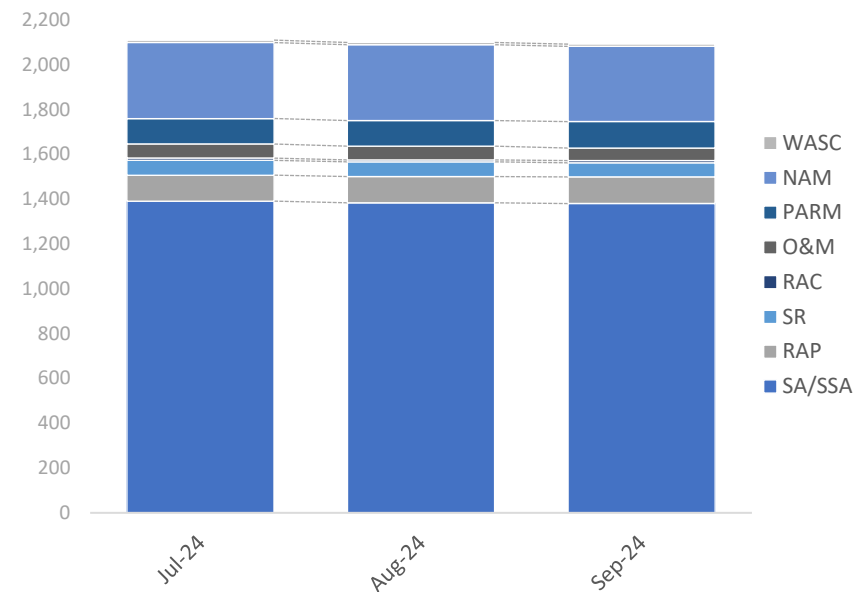
FY24-25 Non-Program Closures by Lead Agency

Closure Type	District	LP	RP TLH	All Closures	% of Closures
LNFA	0	0	0	0	0%
NFA/SRCO	8	11	1	20	57%
NFAC	1	1	0	2	6%
NREQ	2	3	8	13	37%
Totals	11	15	9	35	100%

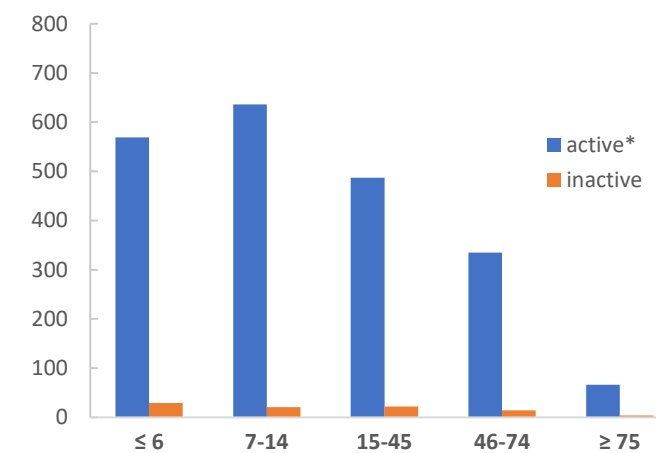
Non-Program Closures by Fiscal Year



Snapshot of Active Non-Program Discharge Sub-Phases



Non-Program Discharges by Score



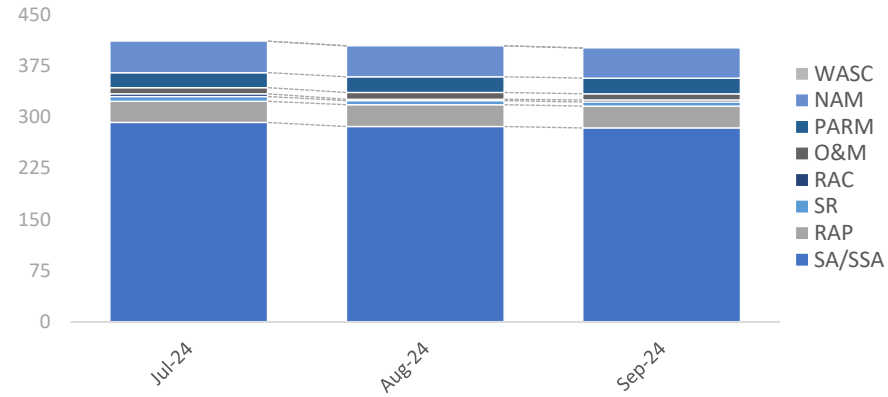
* Discharges with current site managers are considered active.

Sub-Phase	Jul-24	Aug-24	Sep-24	Oct-24	Nov-24	Dec-24	Jan-25	Feb-25	Mar-25	Apr-25	May-25	Jun-25
Site Assessment/Supplemental (SA/SSA)	1,392	1,384	1,381									
Remedial Action Plan (RAP)	116	118	119									
Source Removal (SR)	66	65	63									
Remedial Action Construction (RAC)	10	9	10									
Operation & Maintenance (O&M)	63	62	56									
Post Active Remedial Monitoring (PARM)	114	114	118									
Natural Attenuation Monitoring (NAM)	339	338	336									
Well Abandonment/SRCO (WASC)	11	10	10									

Non-Program Active Discharge Sub-Phases

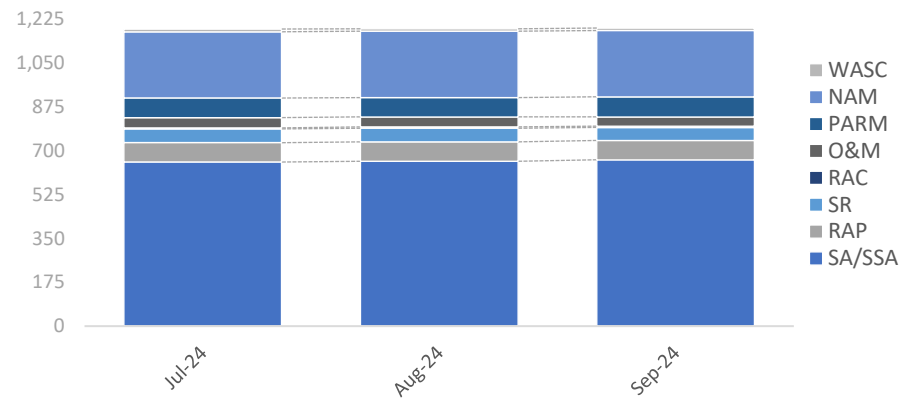
as of October 3, 2024

District Non-Program Active Discharge Sub-Phases



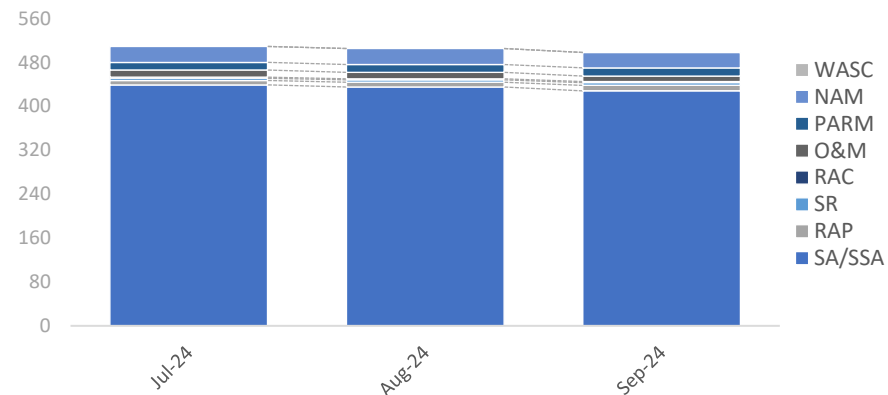
Sub-Phase	Jul-24	Aug-24	Sep-24	Oct-24	Nov-24	Dec-24	Jan-25	Feb-25	Mar-25	Apr-24	May-25	Jun-25
Site Assessment/Supplemental (SA/SSA)	292	286	284									
Remedial Action Plan (RAP)	31	32	32									
Source Removal (SR)	7	6	6									
Remedial Action Construction (RAC)	4	2	3									
Operation & Maintenance (O&M)	9	10	9									
Post Active Remedial Monitoring (PARM)	22	23	23									
Natural Attenuation Monitoring (NAM)	46	45	44									
Well Abandonment/SRCO (WASC)	0	0	0									
Total	411	404	401									

LP Non-Program Active Discharge Sub-Phases



Sub-Phase	Jul-24	Aug-24	Sep-24	Oct-24	Nov-24	Dec-24	Jan-25	Feb-25	Mar-25	Apr-24	May-25	Jun-25
Site Assessment/Supplemental (SA/SSA)	654	657	663									
Remedial Action Plan (RAP)	77	77	77									
Source Removal (SR)	55	55	52									
Remedial Action Construction (RAC)	4	5	5									
Operation & Maintenance (O&M)	41	40	37									
Post Active Remedial Monitoring (PARM)	78	77	80									
Natural Attenuation Monitoring (NAM)	264	264	264									
Well Abandonment/SRCO (WASC)	11	10	10									
Total	1,184	1,185	1,188									

RP/TLH Non-Program Active Discharge Sub-Phases



Sub-Phase	Jul-24	Aug-24	Sep-24	Oct-24	Nov-24	Dec-24	Jan-25	Feb-25	Mar-25	Apr-24	May-25	Jun-25
Site Assessment/Supplemental (SA/SSA)	439	435	428									
Remedial Action Plan (RAP)	8	9	10									
Source Removal (SR)	4	4	5									
Remedial Action Construction (RAC)	2	2	2									
Operation & Maintenance (O&M)	13	12	10									
Post Active Remedial Monitoring (PARM)	14	14	15									
Natural Attenuation Monitoring (NAM)	29	29	28									
Well Abandonment/SRCO (WASC)	0	0	0									
Total	509	505	498									