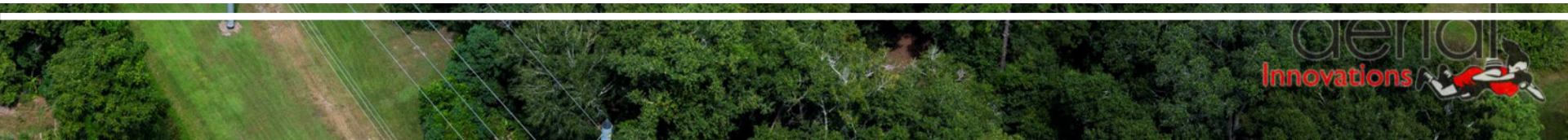




Nonpoint Source Management Funding Opportunities





EPA 319(h) Nonpoint Source Grant

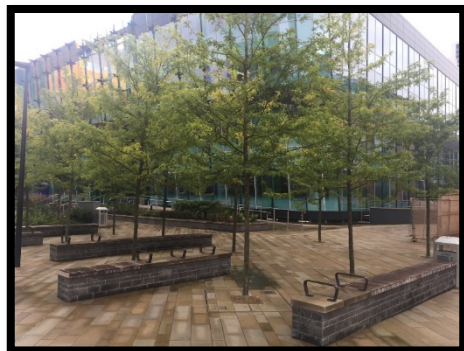
- **Minimum 40% non-federal match** for Florida to EPA funds
 - SRF, SWAG, Springs, and Legislative funds may be used towards match criteria
- Once stormwater enters a major conveyance system, EPA considers it a point source and may not be eligible for the 319 Grant
- **PLAN AHEAD:** Can take up to two years from application to ability to expend funds
- Eligible projects include: water quality improvement, groundwater protection, water quality restoration, Best Management Practices (BMP), stormwater treatment, nonpoint source education, low impact development/green infrastructure, septic to sewer.
- Not Eligible: Planning or design (may be eligible match)





State Water-quality Assistance Grant (SWAG)

State grant for projects that reduce stormwater pollutant loadings in impaired waterbodies



- “Shovel ready”
- No required Match
- No required water quality monitoring
- Eligible projects include: water quality improvement, groundwater protection, water quality restoration, Best Management Practices (BMP), reuse water, low impact development/green infrastructure,



How do I apply for Nonpoint Source Grant Funding?

How to apply

- Project proposals may be submitted in Word Doc and PDF form to the Grant Coordinator anytime throughout the year.

Emily Forinash

850-245-2944

Emily.Forinash@FloridaDEP.gov

- Department review and evaluation periods are expected to occur in September/October and March/April of each year, or as needed.
- If the project is not funded in the current selection cycle, it will be considered in the following cycle with no need to resubmit (unless there is a need to update the proposal). If your project is not selected within the current state fiscal year, the proposal will need to be resubmitted for evaluation.

floridadep.gov/wra/319-tmdl-fund



Water and Springs Restoration

Managing grant agreements for springs restoration and legislative water projects



- Springs projects are selected through a public process with the water management districts
- Legislative water projects are chosen by the Legislature from community budget requests
- Eligible projects include water quality improvement, sewer, land acquisition, OSTDS, agricultural Best Management Practices (BMP), reuse water



State Revolving Funds

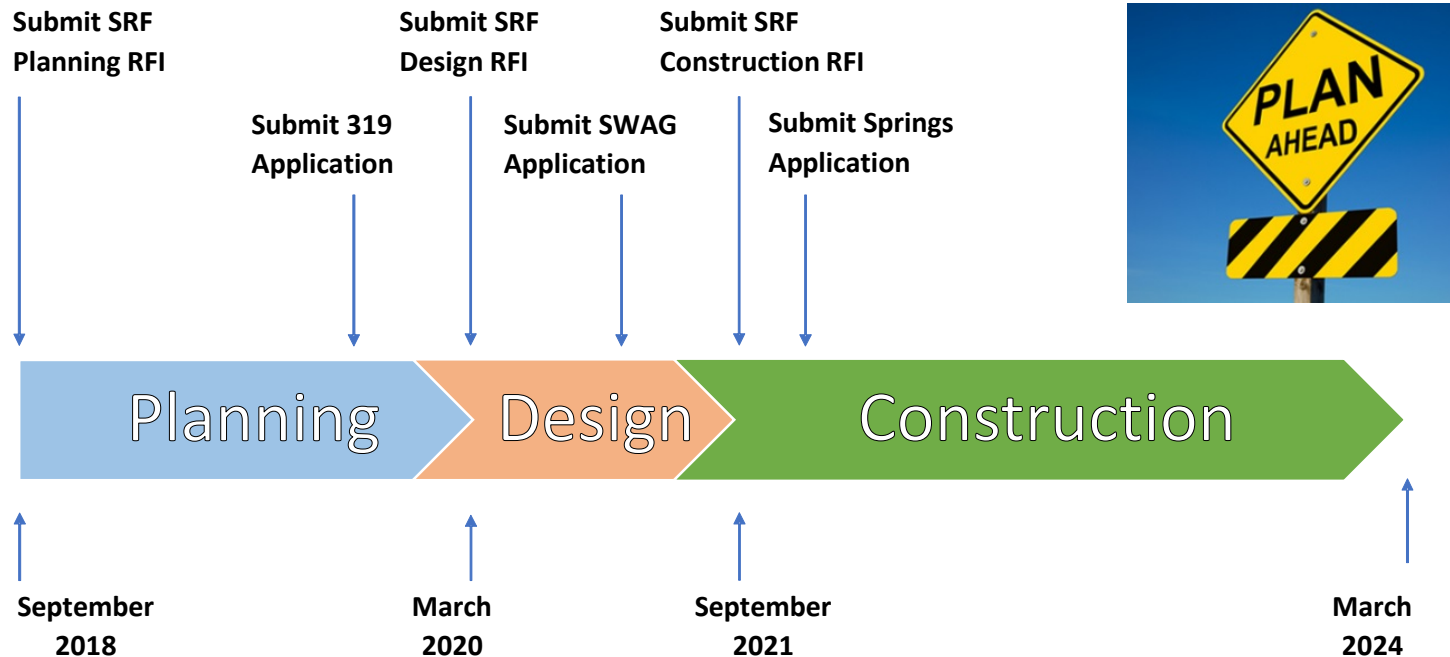
Florida's largest financial assistance program for water infrastructure, capitalized by federal grants through EPA

- Provides low-interest loans to local governments to plan, design, and build or upgrade water, wastewater and stormwater facilities
- ~\$270 million per year total for Clean Water and Drinking Water
- Revolves using state and federal appropriations, loan repayments, investment earnings, and bond proceeds
- Interest rates on loans are below market rates and vary based on the economic wherewithal of the community
- Wastewater collection and treatment projects
- Water supply, treatment, storage and distribution
- Also reuse, stormwater, nonpoint and green energy
- Federal requirements for fair wages, American Iron and Steel, asset management plans
 - Interest rate breaks to help with compliance





Timeline Example for a DWRA Project with Combined Grant and Loan Funding





Questions?

State Revolving Fund: floridadep.gov/wra/srf

Clean Water Loans: Tim Banks, 850-245-2969, timothy.banks@dep.state.fl.us

Drinking Water Loans: Shanin Speas-Frost, 850-245-2991,
Shanin.Speasfrost@dep.state.fl.us

Nonpoint Source Management Grants: floridadep.gov/wra/319-tmdl-fund

Amanda Peck, 850-245-2952, Amanda.Peck@dep.state.fl.us

Water and Springs Restoration: floridadep.gov/springs/restoration-funding

Sandra Waters, 850-245-2898, WSRP@dep.state.fl.us

Water Project Funding in Florida: floridadep.gov/WRA



Low Impact Development





What is LID?

LID is the use of plants
(and pervious material)
to treat and control
stormwater.



Also Know As: Low Impact Development, Low Impact Design,
Green Infrastructure, Florida Friendly Development, etc.



Benefits of LID

- Stormwater Treatment (nutrient reduction)
- Flood Control
- Neighborhood Improvement
 - Beautification
 - Recreation
 - Increased Property Value
 - Increased Safety (real and perceived)
 - Reduced Street Heat
 - The “Halo” Effect
- Improved Community Health (mental/physical)

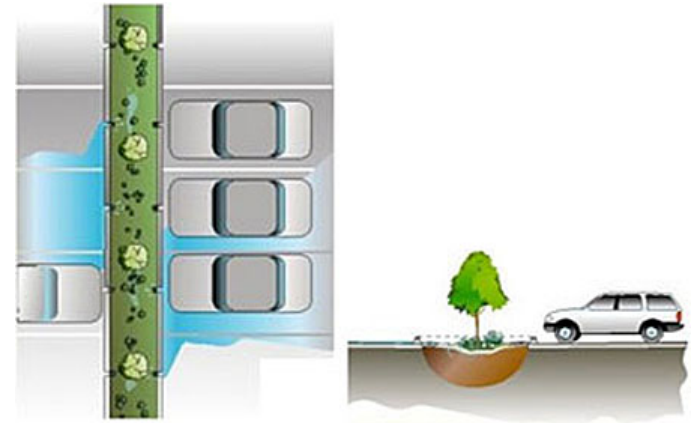




Types of Low Impact Development

Examples include:

1. Rain gardens
2. Bio-swales
3. Permeable pavement
4. Subsurface retention facilities
5. Tree box filters
6. Disconnected downspouts
7. Rain barrels/cisterns
8. Site appropriate landscaping (native plants for the specific location)
9. Green roofs
10. Soil amendments and aeration
11. Pollution prevention lawn care





Raingardens/Bioswales

Raingardens/Bioswales are more than just Stormwater Treatment Sites, they're also Pretty and the effect it can have on your community is beautiful!

- Physical Health
- Communities Feeling of Safety
- Mental Health
- Increased Property Values
- Educational Opportunities
- Decreased Flooding Events



Raingardens = Smaller and can be a "DIY" homeowner project
Bioswales = Larger capacity and require engineering/detailed design



Prior to
Construction



After
Construction

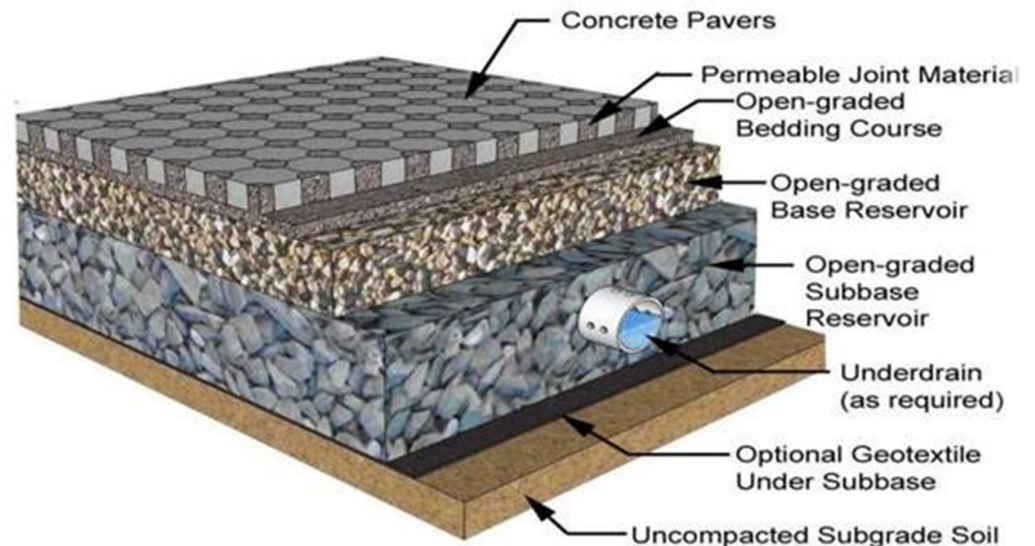


Five Years After
Construction



Pervious Pavement

- Pervious Pavement is a method of paving roads, sidewalks, and other surfaces with pervious materials.
- Pervious Pavement can be made of specifically designed asphalt or concrete or can be constructed out of different types of pavers.



[Video Link!](#)



Tree Boxes

- Useful in smaller areas and highly urban communities
- Benefits
 - Nutrient Removal
 - Flood mediation
 - Decreased pervious surface areas from tree cover
 - Beautification
 - Shade/street cooling





Green Roofs

- Similar Benefits as bioswales
 - Water Capture
 - Nutrient uptake
 - Decreased impervious surfaces
 - Beautification
 - Education and recreation activities
 - Rental Space





Stormwater Ponds

Benefits

- Similar Benefits as bioswales
 - Water Capture
 - Decreased impervious surfaces
 - Beautification
 - Education and recreation



Innovative Ideas

- Stormwater Parks
- Floating Vegetative Islands
- Vegetative Buffers
- Constructed Wetlands



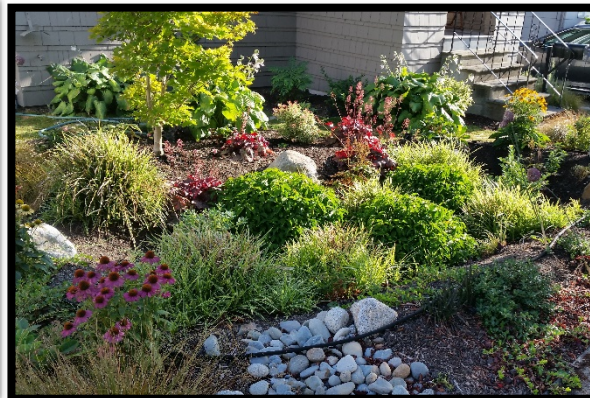


Calgary's West District Central Park



Steps for a successful LID Project

1. Make a Plan
2. Community Education and Outreach
3. Contractor Selection
4. Maintenance
5. Funding





Tavares Stormwater Park





Tavares Stormwater Park

Education Signage

- \$24,320 319(h)

Pervious Parking Lot

- \$180,000 319(h)

Stormwater Ponds

- \$115,000 SWAG (formerly TMDL)

- \$750,000 319(h)

- \$750,000 Legislative Appropriation

Stormwater Pipes

- \$750,000 TMDL Category





Tavares Stormwater Park





Helpful Links

Nonpoint Source Program – 319 and SWAG Grant

<https://floridadep.gov/WRA/319-TMDL-Fund>

Nonpoint Source Program – Low Impact Development

<https://floridadep.gov/wra/319-tmdl-fund/content/green-infrastructure>

Nonpoint Source Program – Nonpoint Education

<https://floridadep.gov/wra/319-tmdl-fund/content/nonpoint-source-pollution-education>

Nonpoint Source Program Mailing List

<https://floridadep.gov/wra/319-tmdl-fund/content/nonpoint-source-pollution-education#subscribe>

Nonpoint Source Education File Sharing Website

<http://publicfiles.dep.state.fl.us/DWRA/Nonpoint-Source-Education/>

Salesforce Grant Application Portal

<https://myeco.force.com/grants/s/login/?startURL=%2Fgrants%2Fs%2F&ec=302>



Questions?

State Revolving Fund: floridadep.gov/wra/srf

Clean Water Loans: Tim Banks, 850-245-2969, timothy.banks@dep.state.fl.us

Drinking Water Loans: Shanin Speas-Frost, 850-245-2991,
Shanin.Speasfrost@dep.state.fl.us

Nonpoint Source Management Grants: floridadep.gov/wra/319-tmdl-fund

Amanda Peck, 850-245-2952, Amanda.Peck@dep.state.fl.us

Water and Springs Restoration: floridadep.gov/springs/restoration-funding

Sandra Waters, 850-245-2898, WSRP@dep.state.fl.us

Water Project Funding in Florida: floridadep.gov/WRA