



# FLORIDA DEPARTMENT OF ENVIRONMENTAL PROTECTION

## North Florida Habitat Assessment Benchmark Sites

Bridge Creek upstream of SR 71

Division of Environmental Assessment and Restoration  
Water Quality Standards Program

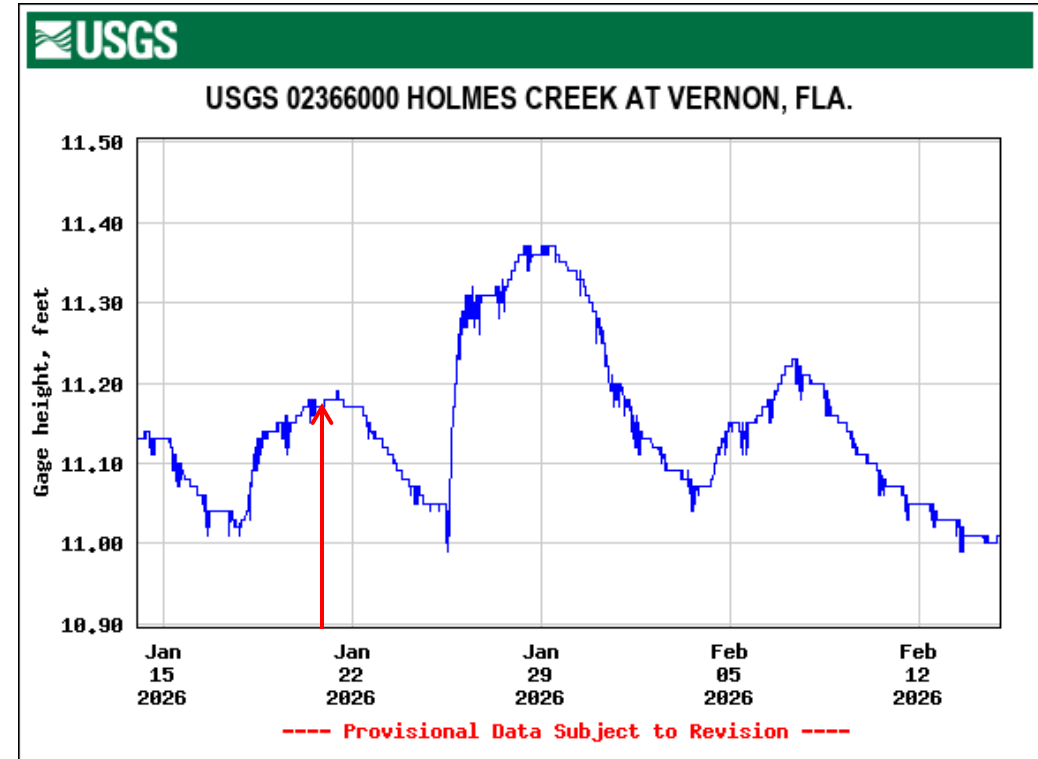
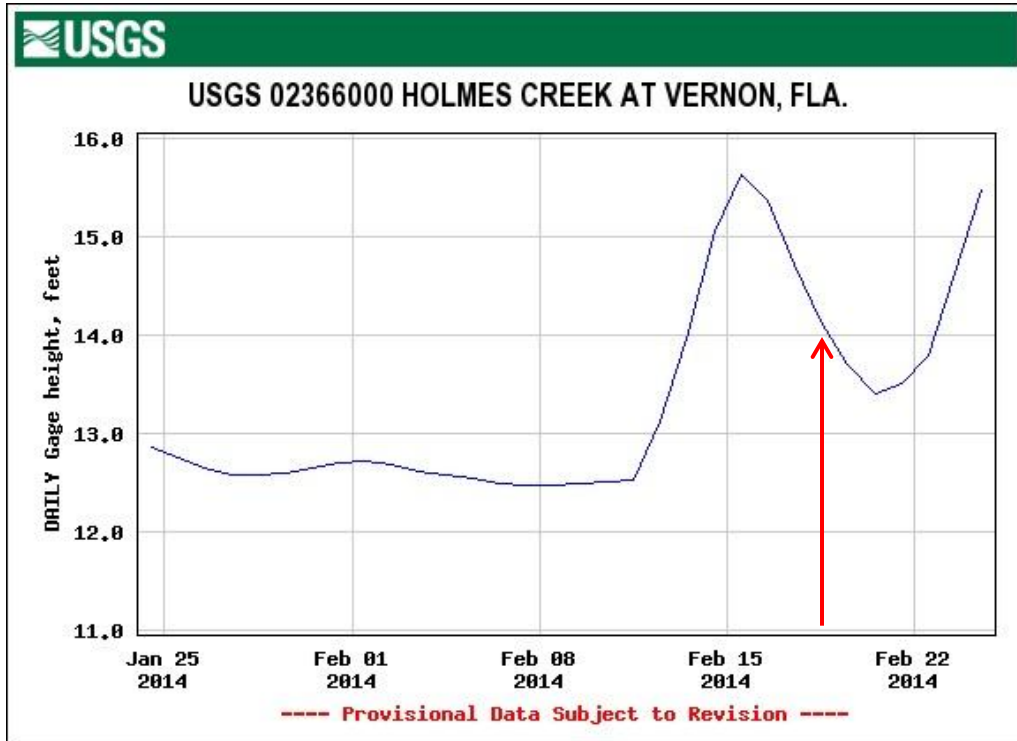


# PROCEDURE

- Evaluate each site per SOP FT3100, “Stream and River Habitat Assessment”, using forms FD9000-3, FD9000-4, and FD9000-5. It is recommended that you use the most current editions of the forms and the SOP.
- **Work independently.**
- Submit all completed forms to the FDEP Aquatic Ecology and Quality Assurance (AEQA) Section in Tallahassee.
- The range for a passing score is +/- 10 points from the predetermined consensus score. However, consideration will be given to scores outside this range if they were legitimately caused by different conditions at the time of sampling compared to conditions when the consensus score was decided (i.e., higher/lower water level, velocity).
- Analysts must pass 2 out of 3 Habitat Assessments every 5 years.
- Once scores have been reviewed, analysts will receive notice of passing or failing from the AEQA Section.
- Analysts should take photos to document stream conditions at the time of assessment. Photos may be submitted to AEQA after initial determination of passing/failing if an analyst believes his/her score for a given site is out of the +/- 10-point range due to justifiable reasons.



# AREA HYDROGRAPHS



The consensus score for these Panhandle Region sites were originally established on February 18 and 19, 2014 and revisited on January 21, 2026. Above are the gage height data for streams in the area during the visits. If you conduct habitat assessment at these sites at different water levels, be sure to document current conditions.

Graphs courtesy of the US Geological Survey.

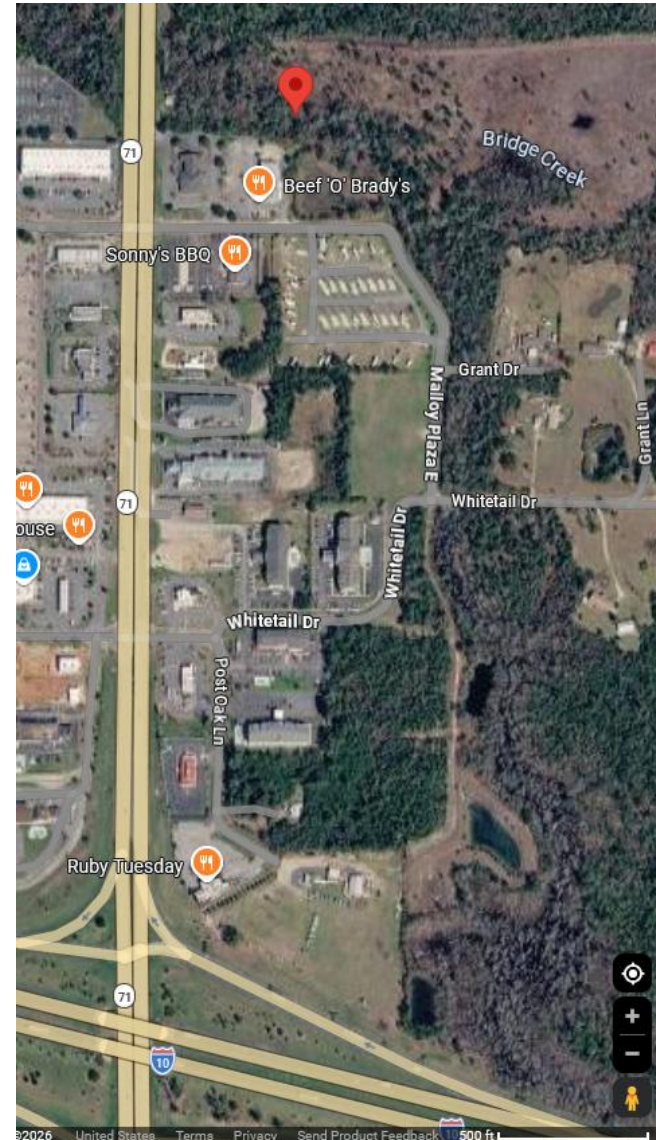


# BRIDGE CREEK UPSTREAM OF 71

- **Region:** North
- **County:** Jackson
- **Lat/Longs:**

Parking	30.72988, -85.18373
0m	30.73015, -85.18445
100m	30.72988, -85.18373

- **Directions:** From I-10, exit going north onto SR 71 for approximately 0.5 miles. Turn right (east) onto Malloy Plaza (there's a Cadence Bank on left & a Sonny's BBQ on right) go to 2<sup>nd</sup> driveway on the left (Beef O'Bradys will be on the right) and park in the back. Go downhill from the parking lot, look for flagging tape marking a path to the creek. This will bring you to approximately the 70m mark. Go downstream to the 0m flags to begin the assessment.





# BRIDGE CREEK UPSTREAM OF SR 71

- **Accessing the site:** From the Beef O'Brady's parking lot, go downhill (north), look for the flagging tape marking the entrance at approximately the 70m mark.



**Parking lot facing creek  
lat/longs (30.72988, -85.18373)**



**Flagging tape marking path to creek**



# BRIDGE CREEK UPSTREAM OF SR 71



**0m flags: 30.73015, -85.18445**



**100m flags: 30.72988, -85.18373**



## North Florida Habitat Assessment Benchmark Sites

Econfina Creek below Scott Road

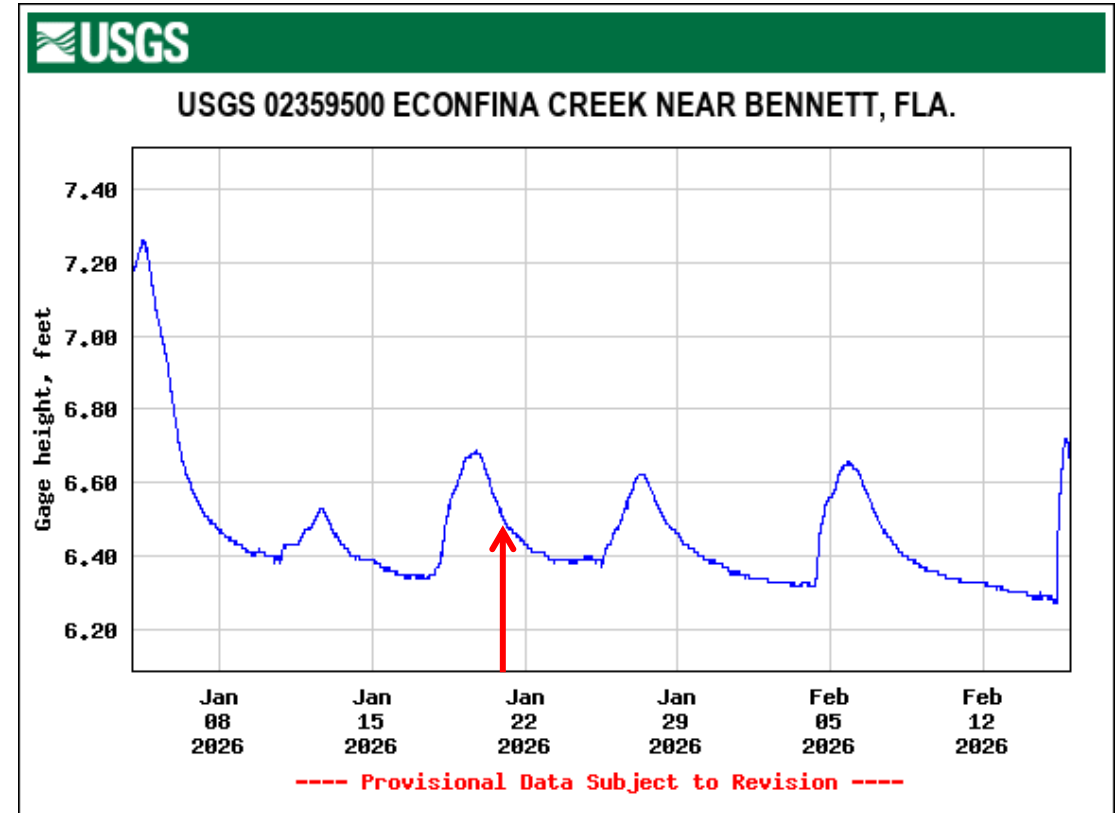
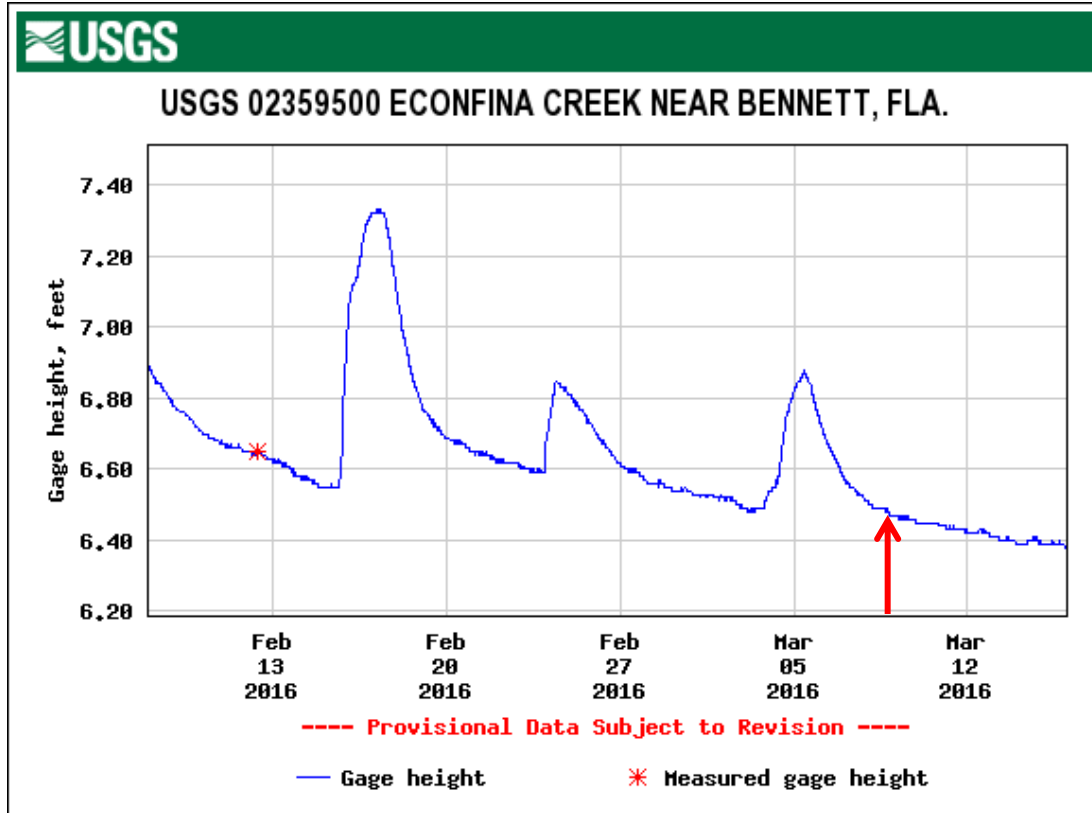


# PROCEDURE

- Evaluate each site per SOP FT3100, “Stream and River Habitat Assessment”, using forms FD9000-3, FD9000-4, and FD9000-5. It is recommended that you use the most current editions of the forms and the SOP.
- **Work independently.**
- Submit all completed forms to the FDEP Aquatic Ecology and Quality Assurance (AEQA) Section in Tallahassee.
- The range for a passing score is +/- 10 points from the predetermined consensus score. However, consideration will be given to scores outside this range if they were legitimately caused by different conditions at the time of sampling compared to conditions when the consensus score was decided (i.e., higher/lower water level, velocity).
- Analysts must pass 2 out of 3 Habitat Assessments every 5 years.
- Once scores have been reviewed, analysts will receive notice of passing or failing from the AEQA Section.
- Analysts should take photos to document stream conditions at the time of assessment. Photos may be submitted to AEQA after initial determination of passing/failing if an analyst believes his/her score for a given site is out of the +/- 10-point range due to justifiable reasons.



# AREA HYDROGRAPHS



The consensus score for these Panhandle Region sites were originally established on March 9, 2016, and the site was revisited on January 21, 2026. Above is the gage height data for the stream during the visits. If you conduct habitat assessment at these sites at different water levels, be sure to document current conditions.

Graphs courtesy of the US Geological Survey.



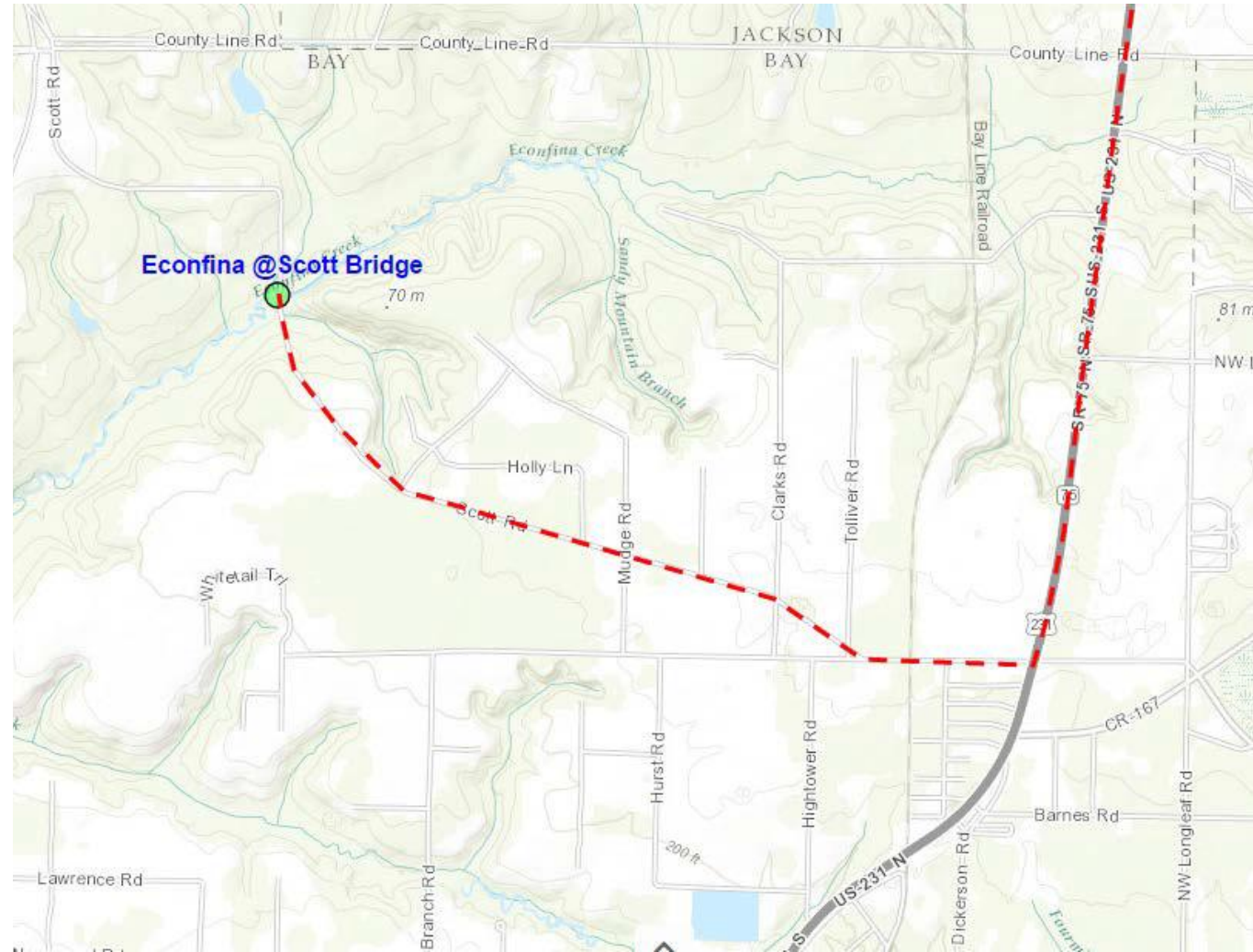
# ECONFINA CREEK BELOW SCOTT RD

- **Region:** North
- **County:** Bay
- **Lat/Longs:**

Parking	30.55532, -85.43507
0m	30.55501, -85.43623
100m	30.55525, -85.43533

- **Directions:**

From Interstate 10 E or W, take the Highway 231 exit (exit 130), and travel south on 231, approximately 15 miles, to the intersection of 231 and Scott Road (if you cross Highway 167, you have gone too far). Turn right on Scott Road and travel approximately 0.5 mi to a fork in the road. Stay to the right on Scott Rd. The road becomes dirt. Travel 2.4 more miles to the site. The 100m flags are about 20m below the old bridge pilings.





# ECONFINA CREEK BELOW SCOTT RD



**0m flags: 30.55501, -85.43623**



**100m flags: 30.55525, -85.43533**



## North Florida Habitat Assessment Benchmark Sites

Fourmile Creek at Fourmile Creek Park

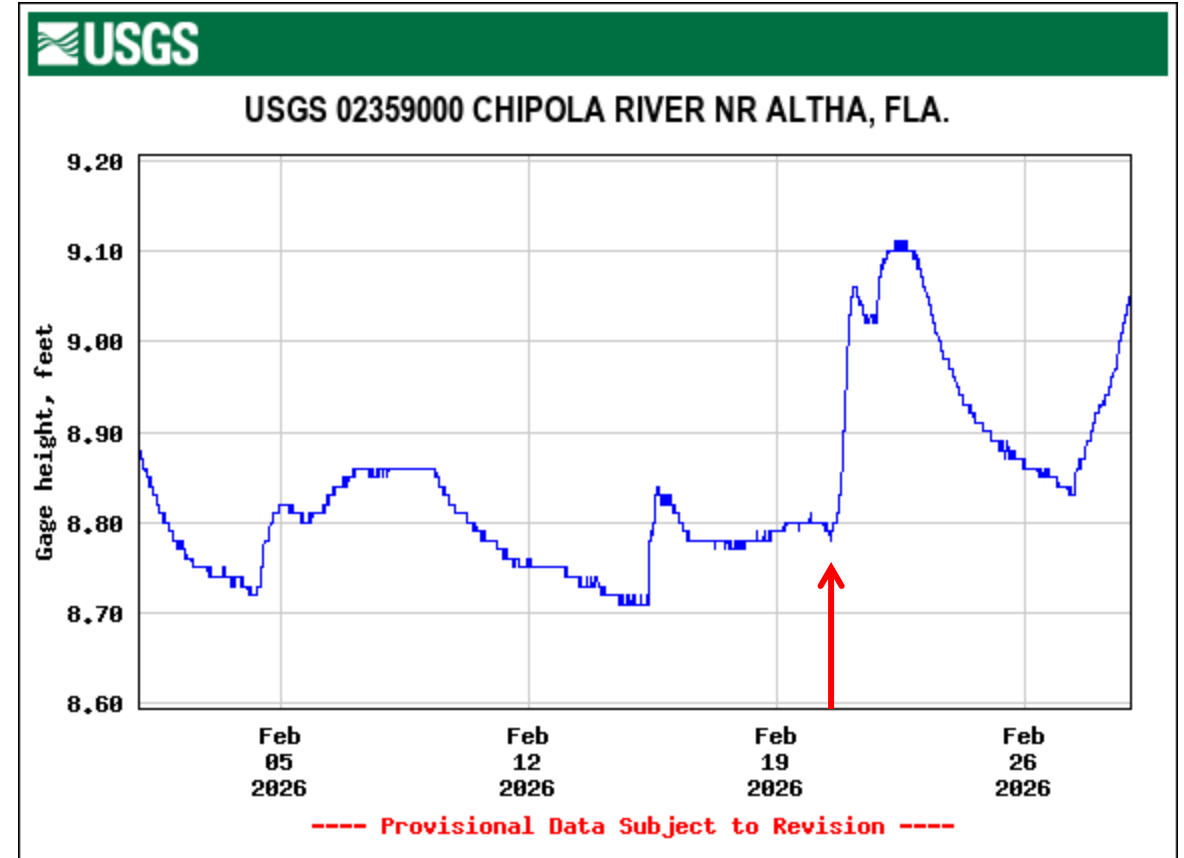
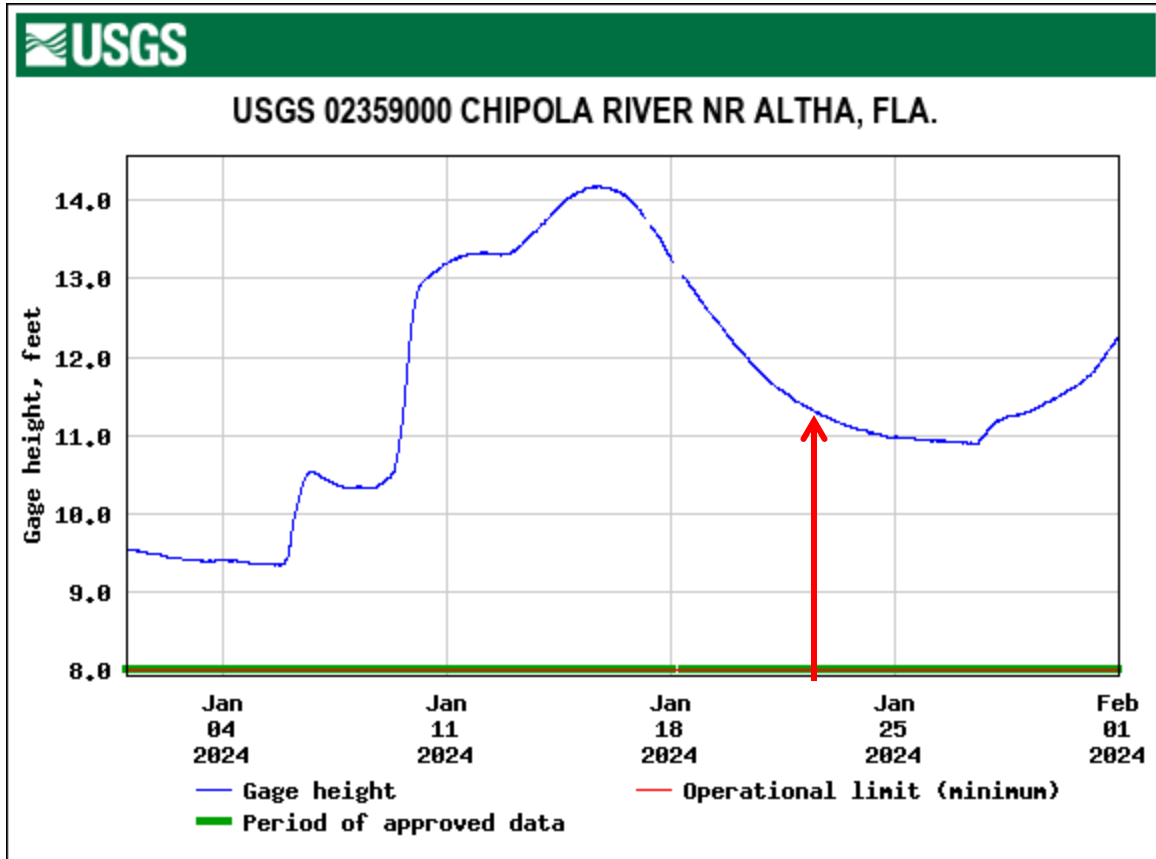


# PROCEDURE

- Evaluate each site per SOP FT3100, “Stream and River Habitat Assessment”, using forms FD9000-3, FD9000-4, and FD9000-5. It is recommended that you use the most current editions of the forms and the SOP.
- **Work independently.**
- Submit all completed forms to the FDEP Aquatic Ecology and Quality Assurance (AEQA) Section in Tallahassee.
- The range for a passing score is +/- 10 points from the predetermined consensus score. However, consideration will be given to scores outside this range if they were legitimately caused by different conditions at the time of sampling compared to conditions when the consensus score was decided (i.e., higher/lower water level, velocity).
- Analysts must pass 2 out of 3 Habitat Assessments every 5 years.
- Once scores have been reviewed, analysts will receive notice of passing or failing from the AEQA Section.
- Analysts should take photos to document stream conditions at the time of assessment. Photos may be submitted to AEQA after initial determination of passing/failing if an analyst believes his/her score for a given site is out of the +/- 10-point range due to justifiable reasons.



# AREA HYDROGRAPHS



The consensus score for these Panhandle Region sites were originally established on January 23, 2024, and revisited on February 20, 2026. Above is the gage height data for a nearby stream during the visits. If you conduct habitat assessment at these sites at different water levels, be sure to document current conditions.

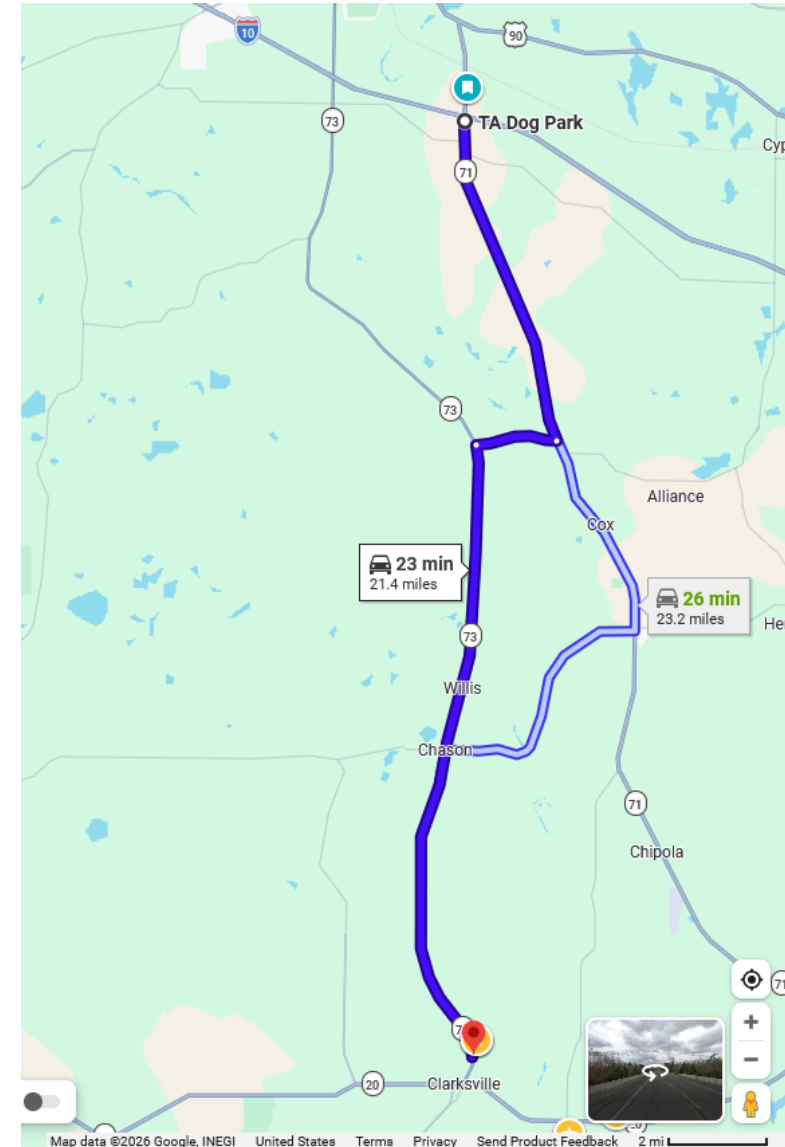


# FOURMILE CREEK @ FOURMILE CREEK PARK

- **Region:** North
- **County:** Calhoun
- **Lat/Longs:**

Parking	30.44532, -85.18147
0m	30.44491, -85.18221
100m	30.44541, -85.18132

- **Directions:** From I-10, exit south on SR 71 for 6.8 miles. Turn right on Peacock Bridge Rd for 1.7 miles. Turn left onto SR 73, go 12.9 miles. Turn left onto Woodman Rd, turn right into the Fourmile Creek Park parking lot. The 0m flags begin at the easternmost stairs.

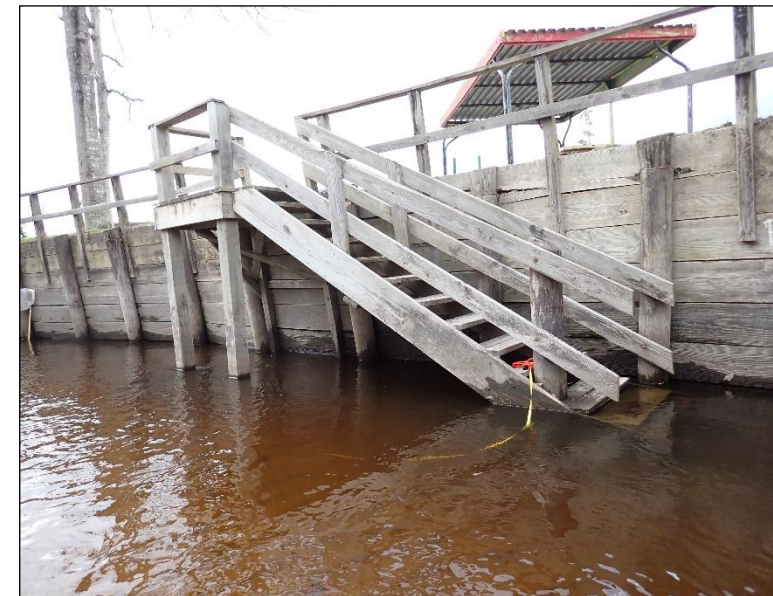




# FOURMILE CREEK @ FOURMILE CREEK PARK



Park anywhere near the creek.



0m flags: 30.44491, -85.18221



100m flags: 30.44541, -85.18132



# FLORIDA DEPARTMENT OF ENVIRONMENTAL PROTECTION

## North Florida Habitat Assessment Benchmark Sites

South Fork Bear Creek

Division of Environmental Assessment and Restoration  
Water Quality Standards Program

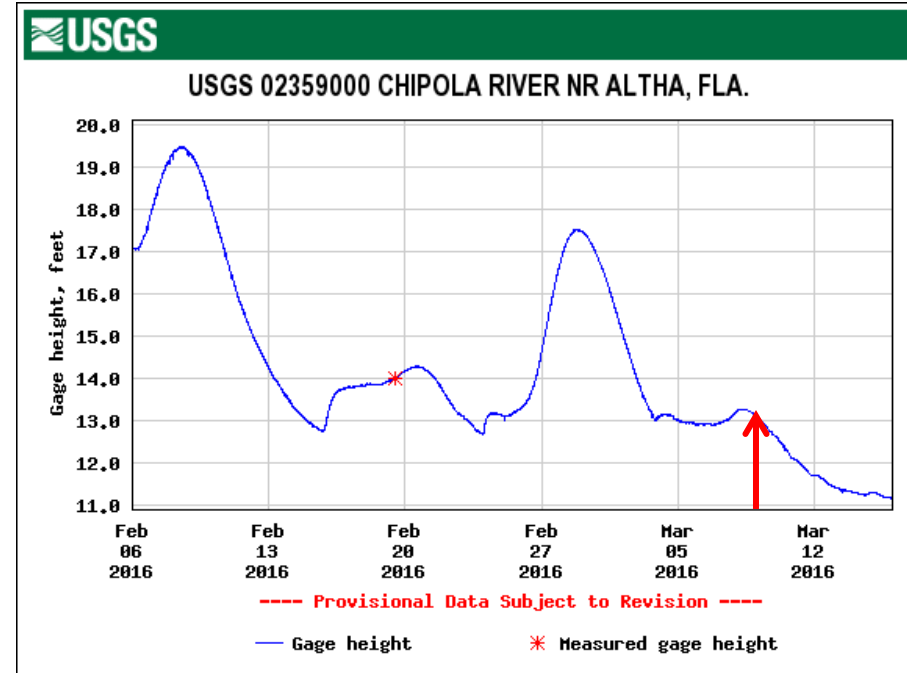
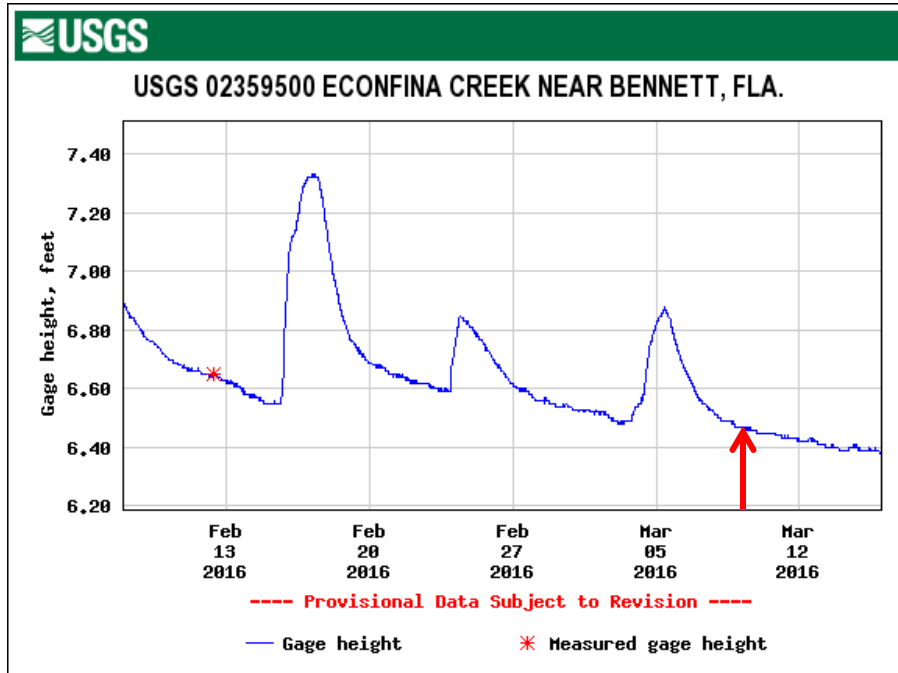


# PROCEDURE

- Evaluate each site per SOP FT3100, “Stream and River Habitat Assessment”, using forms FD9000-3, FD9000-4, and FD9000-5. It is recommended that you use the most current editions of the forms and the SOP.
- **Work independently.**
- Submit all completed forms to the FDEP Aquatic Ecology and Quality Assurance (AEQA) Section in Tallahassee.
- The range for a passing score is +/- 10 points from the predetermined consensus score. However, consideration will be given to scores outside this range if they were legitimately caused by different conditions at the time of sampling compared to conditions when the consensus score was decided (i.e., higher/lower water level, velocity).
- Analysts must pass 2 out of 3 Habitat Assessments every 5 years.
- Once scores have been reviewed, analysts will receive notice of passing or failing from the AEQA Section.
- Analysts should take photos to document stream conditions at the time of assessment. Photos may be submitted to AEQA after initial determination of passing/failing if an analyst believes his/her score for a given site is out of the +/- 10-point range due to justifiable reasons.



# AREA HYDROGRAPHS



The consensus score for these Panhandle Region sites were originally established on March 9, 2016, and revisited on March 5, 2026. Above is the gage height data for a nearby stream during the original visit. If you conduct habitat assessment at these sites at different water levels, be sure to document current conditions.

Graphs courtesy of the US Geological Survey.

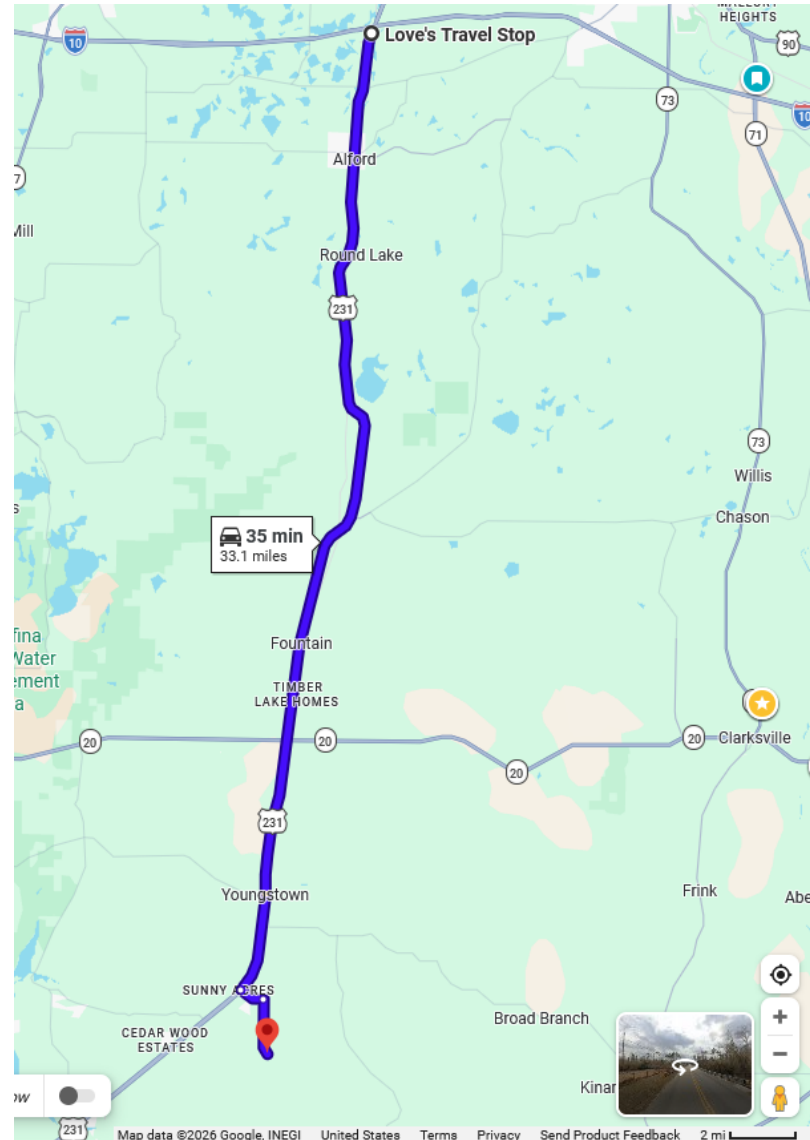


# SOUTH FORK OF BEAR CREEK

- **Region:** North
- **County:** Bay
- **Lat/Longs:**

parking	30.29580, -85.43725
0m	30.29577, -85.43812
100m	30.29548, -85.43729

- **Directions:** From I-10, exit south on US 231 for 30.5 miles. Turn left onto N. Bear Creek Rd, go 0.8 miles. Turn left onto Ed Lee Rd go 1.7 miles. Park on the northwest side of the bridge. Enter through the woods and the 0m flags are about 15m below the bridge.





# SOUTH FORK OF BEAR CREEK



**0m flags: 30.29577, -85.43812**



**100m flags: 30.29548, -85.43729**



## North Florida Habitat Assessment Benchmark Sites

Wildcat Creek below 275

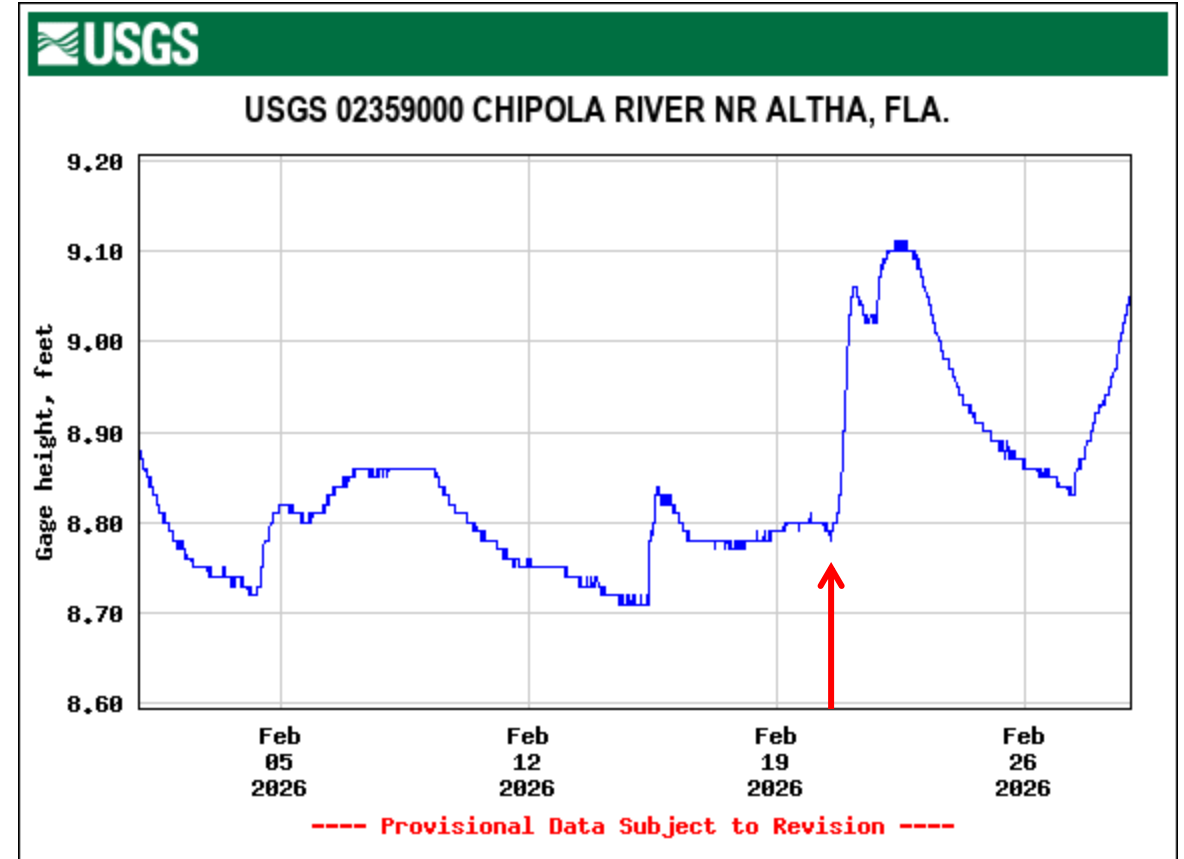
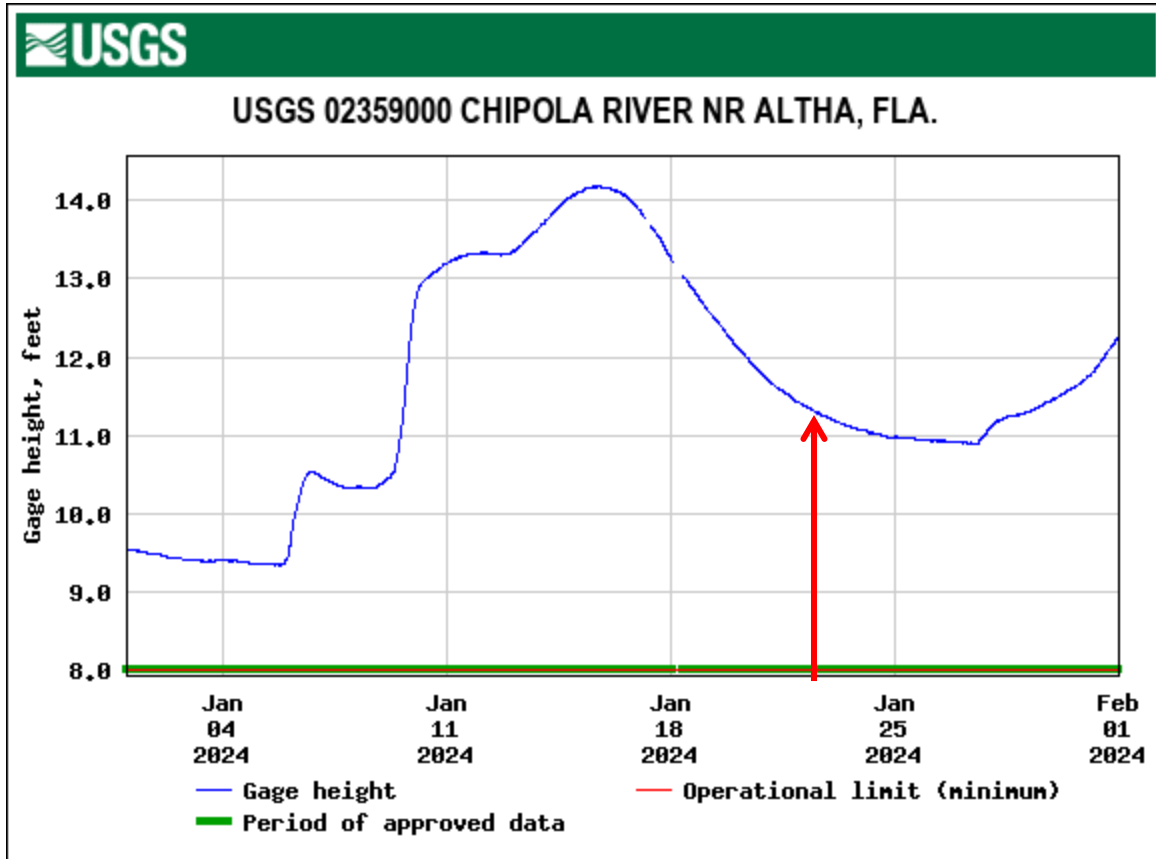


# PROCEDURE

- Evaluate each site per SOP FT3100, “Stream and River Habitat Assessment”, using forms FD9000-3, FD9000-4, and FD9000-5. It is recommended that you use the most current editions of the forms and the SOP.
- **Work independently.**
- Submit all completed forms to the FDEP Aquatic Ecology and Quality Assurance (AEQA) Section in Tallahassee.
- The range for a passing score is +/- 10 points from the predetermined consensus score. However, consideration will be given to scores outside this range if they were legitimately caused by different conditions at the time of sampling compared to conditions when the consensus score was decided (i.e., higher/lower water level, velocity).
- Analysts must pass 2 out of 3 Habitat Assessments every 5 years.
- Once scores have been reviewed, analysts will receive notice of passing or failing from the AEQA Section.
- Analysts should take photos to document stream conditions at the time of assessment. Photos may be submitted to AEQA after initial determination of passing/failing if an analyst believes his/her score for a given site is out of the +/- 10-point range due to justifiable reasons.



# AREA HYDROGRAPHS



The consensus score for these Panhandle Region sites were originally established on January 23, 2024, and revisited on February 20, 2026. Above is the gage height data for a nearby stream during the visits. If you conduct habitat assessment at these sites at different water levels, be sure to document current conditions.

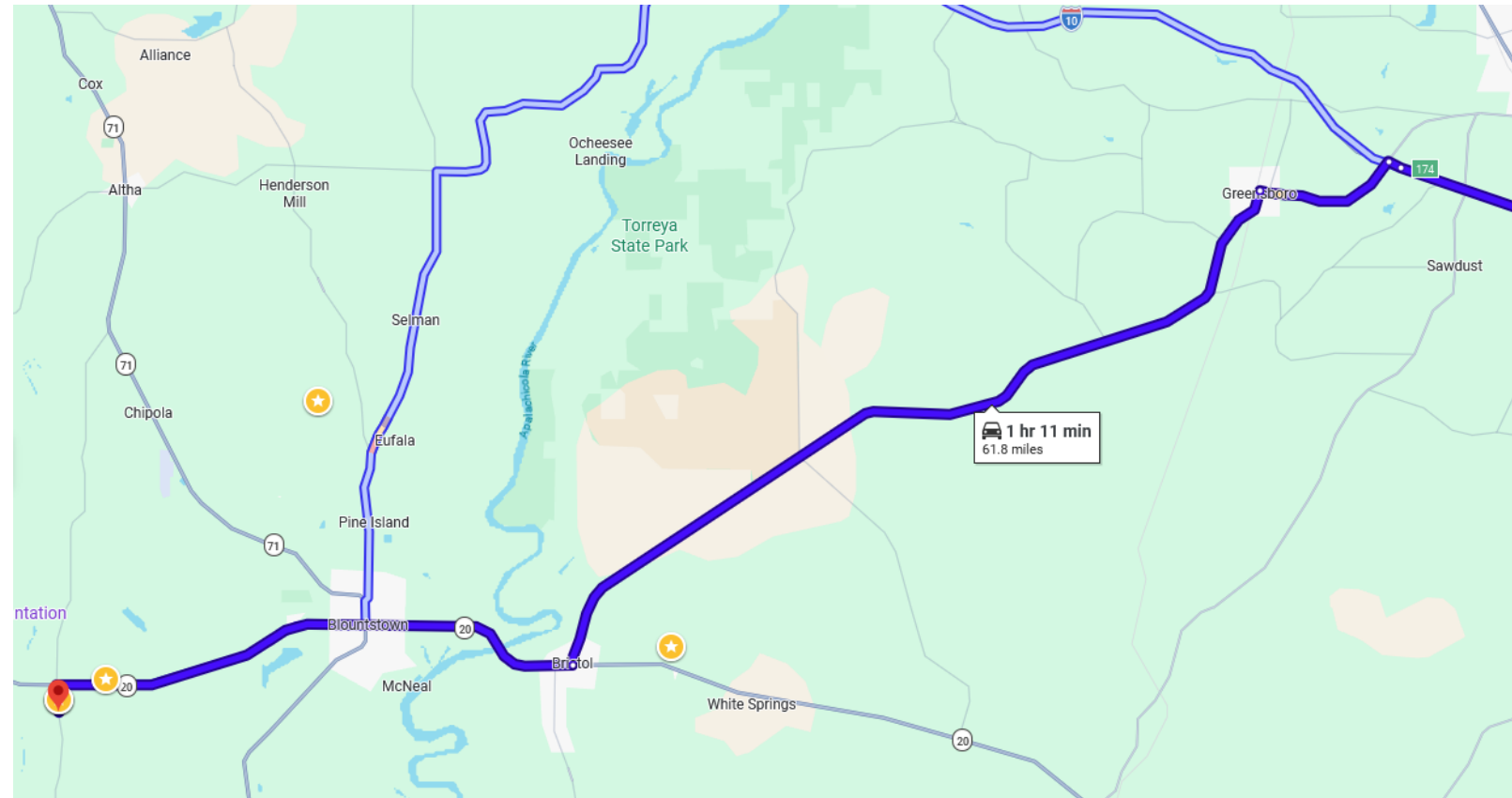


# WILDCAT CREEK BELOW 275

- **Region:** North
- **County:** Calhoun
- **Lat/Longs:**

Parking	30.41809, -85.14979
0m	30.41795, -85.15002
100m	30.41773, -85.15071

- **Directions:** From I-10, exit south on SR 12 for 21.1 miles. Turn right on SR 20. go 11 miles. Turn left onto CR 275 for 0.6 miles. Park on the northwest side of the bridge. The 100m flags are about 20m below the road.





# WILDCAT CREEK BELOW 275



**100m flags: 30.41795, -85.15002**



**0m flags: 30.41773, -85.15071**