



Lake Okeechobee Basin Management Action Plan (BMAP) Annual Meeting

Via Webinar

Webinar Registration Link:

<https://attendee.gotowebinar.com/register/3219677263975056990>

*April 29, 2026
1 PM EDT*

Agenda

- Lake Okeechobee Basin Management Action Plan (BMAP) Background.
- Statewide Annual Report and Reduction Progress for Lake Okeechobee BMAP.
- Programmatic Updates.
- Questions/Comments.
- Technical Updates.
- Look Ahead and Resources.
- Questions/Comments.

Please note the site for documents relating to the Lake Okeechobee BMAP:
[BMAP Public Meetings | Florida Department of Environmental Protection](#)

For more information on the Lake Okeechobee BMAP, contact: Chandler Keenan, 850-245-8555.
Chandler.B.Keenan@FloridaDEP.gov



WEBINAR HOUSEKEEPING

Attendee Participation

Open your control panel.

Join audio:

- Choose Computer Audio **or**
- Choose Phone Call and dial using the information provided with your registration

Attendee audio will automatically be muted.

Submit questions and comments via the **Questions** panel.

If viewing this webinar as a group, please provide a list of attendees via the **Questions** panel.

Note: Today's presentation is being recorded and will be provided after the webinar.

A screenshot of a webinar control panel. The top section is titled "Audio" and includes a "Sound Check" indicator. Below this, there are two radio button options: "Computer audio" (which is selected) and "Phone call" (indicated by a red arrow). A "MUTED" status is shown with a microphone icon. Below the audio options, there are dropdown menus for "Transmit (Plantronics Savi 7xx-M)" and "Receive (Plantronics Savi 7xx-M)". A volume slider is also present. The bottom section is titled "Questions" and contains a text input field with the placeholder "[Enter a question for staff]" and a "Send" button. The text "(Example Only)" is overlaid in red on the "Send" button. At the bottom of the panel, it displays "Webinar Housekeeping" and "Webinar ID: 608-865-371", along with the GoToWebinar logo.



LAKE OKEECHOBEE BASIN MANAGEMENT ACTION PLAN (BMAP) ANNUAL MEETING

Chandler Keenan

Water Quality Restoration Program

Division of Environmental Assessment and Restoration

Florida Department of Environmental Protection

GoTo Webinar | April 29, 2026



ANNUAL MEETING AGENDA

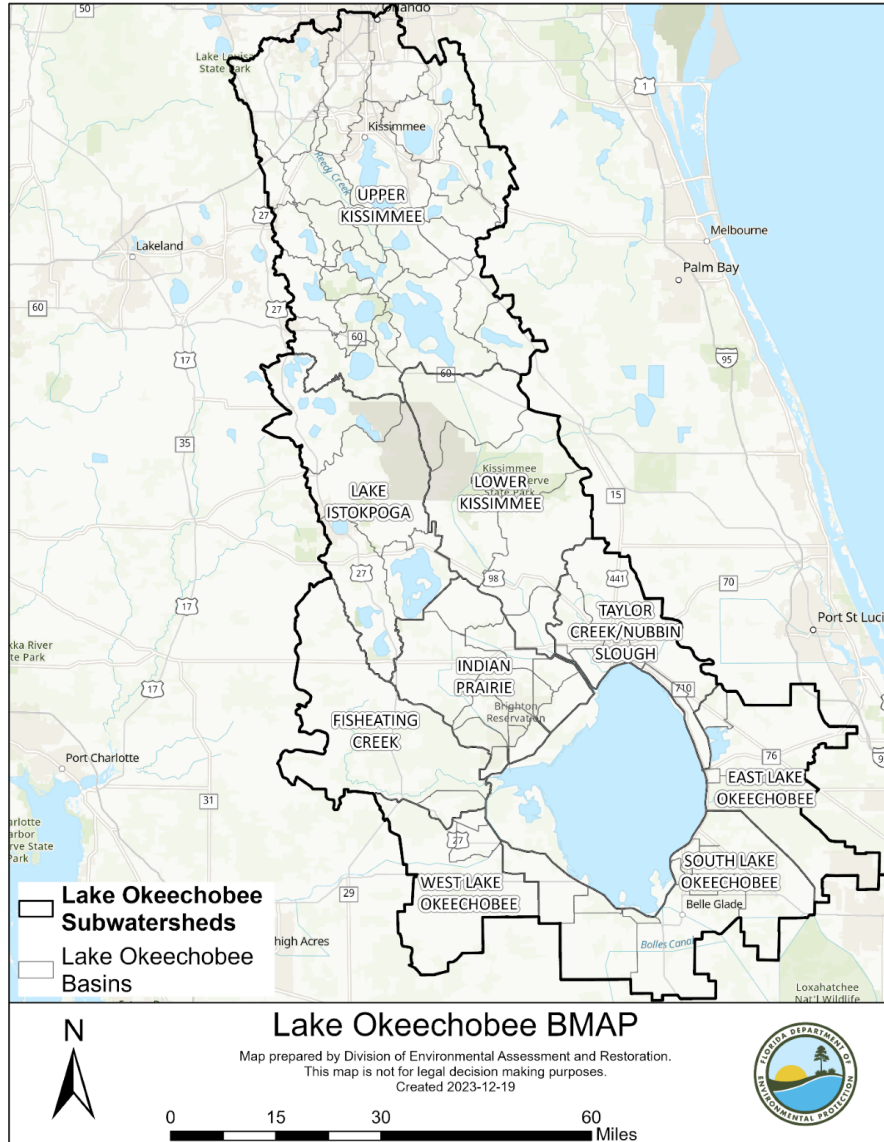
Agenda

- Preliminary Statewide Annual Report (STAR) 2025.
- Florida Department of Environmental Protection (DEP) Year in Review.
- Stakeholder Project Highlight.
- Florida Department of Agriculture and Consumer Services (DACS) Updates.
- South Florida Water Management District (SFWMD) Updates.
- Water Quality Analysis Results.
- Hydrological Simulation Program – FORTRAN (HSPF) Modeling Updates.
- Looking Ahead.





LAKE OKEECHOBEE BMAP BACKGROUND



Total Maximum Daily Load (TMDL)

- Developed in 2001 to address Total Phosphorus (TP) in Lake Okeechobee.
- Annual TP load: 140 metric tons per year (mt/yr).
 - Atmospheric deposition: 35 mt/yr.
 - Remaining: 105 mt/yr.
- Allocated to the 9 subwatersheds in the Lake Okeechobee Watershed (LOW).

Current BMAP

- First adopted in 2014.
- Updated in 2020.
- Two 5 Year Reviews (2019 and 2024).
- Updated in 2025 to include legislative updates.



LAKE OKEECHOBEE BMAP

STAKEHOLDERS

Type of Organization/Entity	Name	
<p align="center">Responsible Entities</p>	<p align="center"> Agriculture Glades County Hendry County Highlands County Martin County Okeechobee County Orange County Osceola County Palm Beach County Polk County City of Avon Park City of Clewiston City of Edgewood City of Kissimmee </p>	<p align="center"> City of Moore Haven City of Okeechobee City of Orlando City of Sebring Town of Lake Placid Town of Windermere Avon Park Air Force Range Central Florida Tourism Oversight District Istokpoga Marsh Watershed Improvement District Okeechobee Utility Authority Spring Lake Improvement District South Florida Conservancy District Valencia Water Control District </p>
<p align="center">Responsible Agencies</p>	<p align="center"> County Health Departments DACS DEP SFWMD Florida Department of Transportation (DOT) District 1 DOT District 4 DOT District 5 DOT Turnpike Enterprise </p>	



LAKE OKEECHOBEE BMAP STORYMAP

[Overview](#) [Summary of BMAP Requirements](#) [Milestones/Required Reductions](#) [Projects](#) [Progress](#) [Water Quality](#) [Trend Analysis Results](#) [Deadlines](#) [Contacts & More Information](#)

Overview

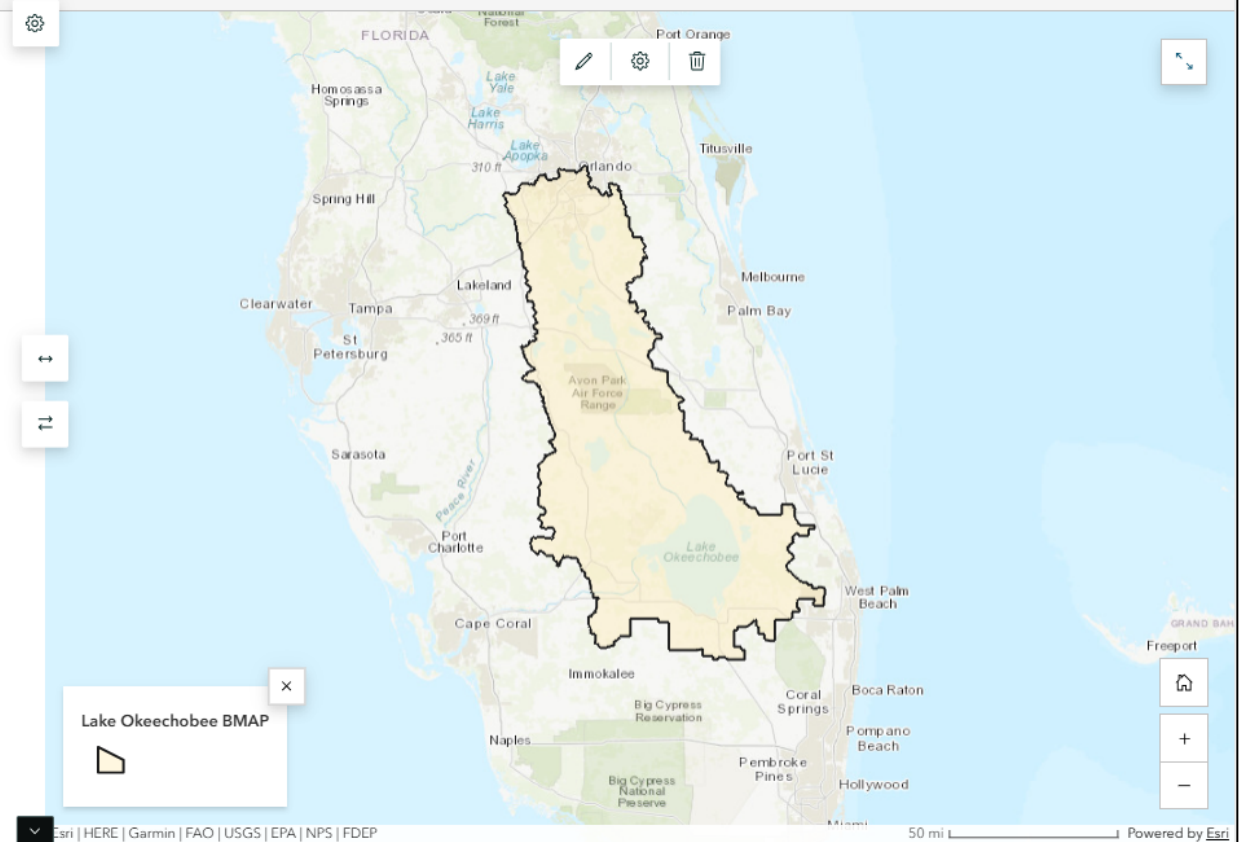
The Lake Okeechobee BMAP was first adopted in December 2014 to implement the total phosphorus (TP) TMDL in the watershed, and Executive Order 19-12 required an update to this BMAP in 2020. The updated BMAP, adopted in February 2020, replaced the original BMAP and also included the statutorily required 5-Year Review. The BMAP includes management strategies or projects to be implemented by the responsible stakeholders that aim to reduce elevated levels of phosphorus in the lake.

Quick Facts:

- Basin Management Action Plan (BMAP) update adopted: February 2020
- Total Maximum Daily Load (TMDL) Restoration Target adopted: August 2001
- BMAP Restoration Area: 3,898,194 acres
- Water Quality Impairment: Total Phosphorus (TP)

Principal Sources of Nutrients:

- Agriculture
- Municipal separate storm sewer systems
- Point source facilities (like domestic and industrial wastewater facilities)
- Stormwater sources (like cities, towns, and water control districts)



[Lake Okeechobee Basin Management Action Plan](#)



STAR

STATEWIDE ANNUAL REPORT

The Statewide Annual Report 2024

The state of Florida is prioritizing the protection and restoration of our waterways by implementing sound, science-based solutions to current and future environmental challenges. Under the leadership of Governor Ron DeSantis, the Florida Department of Environmental Protection (DEP) is working with local, state and federal partners on short- and long-term strategies to protect water quality and quantity, including investment in long-term restoration projects. DEP has prepared the 2024 Statewide Annual Report (STAR) to detail the status of many of these strategies in an interactive application format, which is best viewed on a desktop computer screen using Google Chrome or Microsoft Edge. This application does not scale well on mobile devices and is optimized for viewing on larger format screens.

As required by section 403.0675, Florida Statutes, and to report on additional restoration efforts, this report updates the status of protection and restoration actions through total maximum daily loads (TMDLs); basin



Total Maximum Daily Loads	Basin Management Action Plans	Alternative Restoration Plans	Minimum Flows and Water Levels	Recovery and Prevention Strategies	Contacts and Project Data
					

<https://floridadep.gov/STAR>



STAR STATEWIDE ANNUAL REPORT

Florida Department of Environmental Protection Statewide Annual Report 2024
Basin Management Action Plans

Introduction | Total Maximum Daily Loads | Basin Management Action Plans | Alternative Restoration Plans | Minimum Flows & Water Levels | Recovery & Prevention Strategies | Contacts & Project Data

How to Use This Report | What Is the STAR? | Reductions & Legislation | What Are Nutrients? | What Are FIB? | What Are BMAP Projects?

Nutrient BMAPs | Fecal Indicator Bacteria BMAPs | BMAP Projects | Project Table

Click on a point to find out more information on a specific project. Or click on the Contacts and Project Data card above for a full project list.

Adopted BMAP Projects STAR 2024

- Stormwater
- Wastewater

Lake Okeechobee TP Reductions Achieved by Completed and Ongoing Projects as of December 31, 2024

Legend: Load Tracking, In Waterbody, Agriculture, Stormwater

Units are in pound per year.

Nitrogen Reduction | Phosphorus Reduction

- Report will be published by July 1, 2026, to update reporting through December 31, 2025.
- Summarizes accomplishments in the BMAPs statewide.
- Reports on restoration projects and management strategies.
- Data download available.



STAR BMAP PORTAL FOR PROJECT COLLECTION

- Notify your BMAP coordinator if changes in access to project list are needed.

A screenshot of the DEAR Restoration Project Collection Portal. The page has a blue header with the "DEP BUSINESS PORTAL" logo on the left and "DEAR RESTORATION PROJECT COLLECTION PORTAL" on the right, with the subtitle "Division of Environmental Assessment and Restoration". Below the header is a navigation bar with links for "Workflow", "Data Services", "Module Administration", and "Source Tables". On the right side of the navigation bar, there is a user greeting: "Welcome, Anthony Tomalewski [Roles: Coordinator]" and a session timeout notice: "Your Session will time out in 060 minutes." with a "Sign Out" link. A "Home" link is also visible in the top right corner. The main content area is white and contains the text "Welcome to the DEAR Restoration Project Collection Portal" centered on the page.

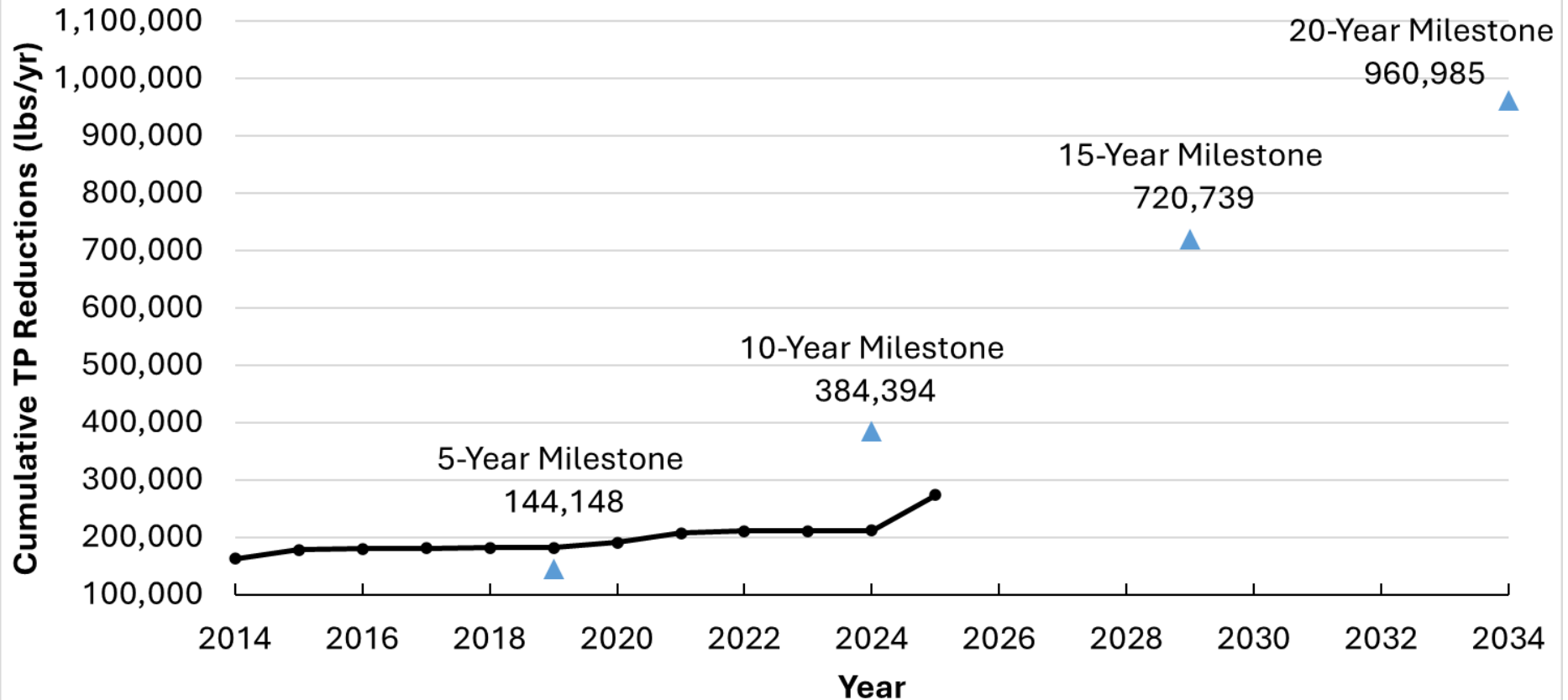


LAKE OKEECHOBEE BMAP

***PRELIMINARY** 2025 STAR UPDATE

*Completed and Ongoing Projects

Lake Okeechobee TP Project Reductions



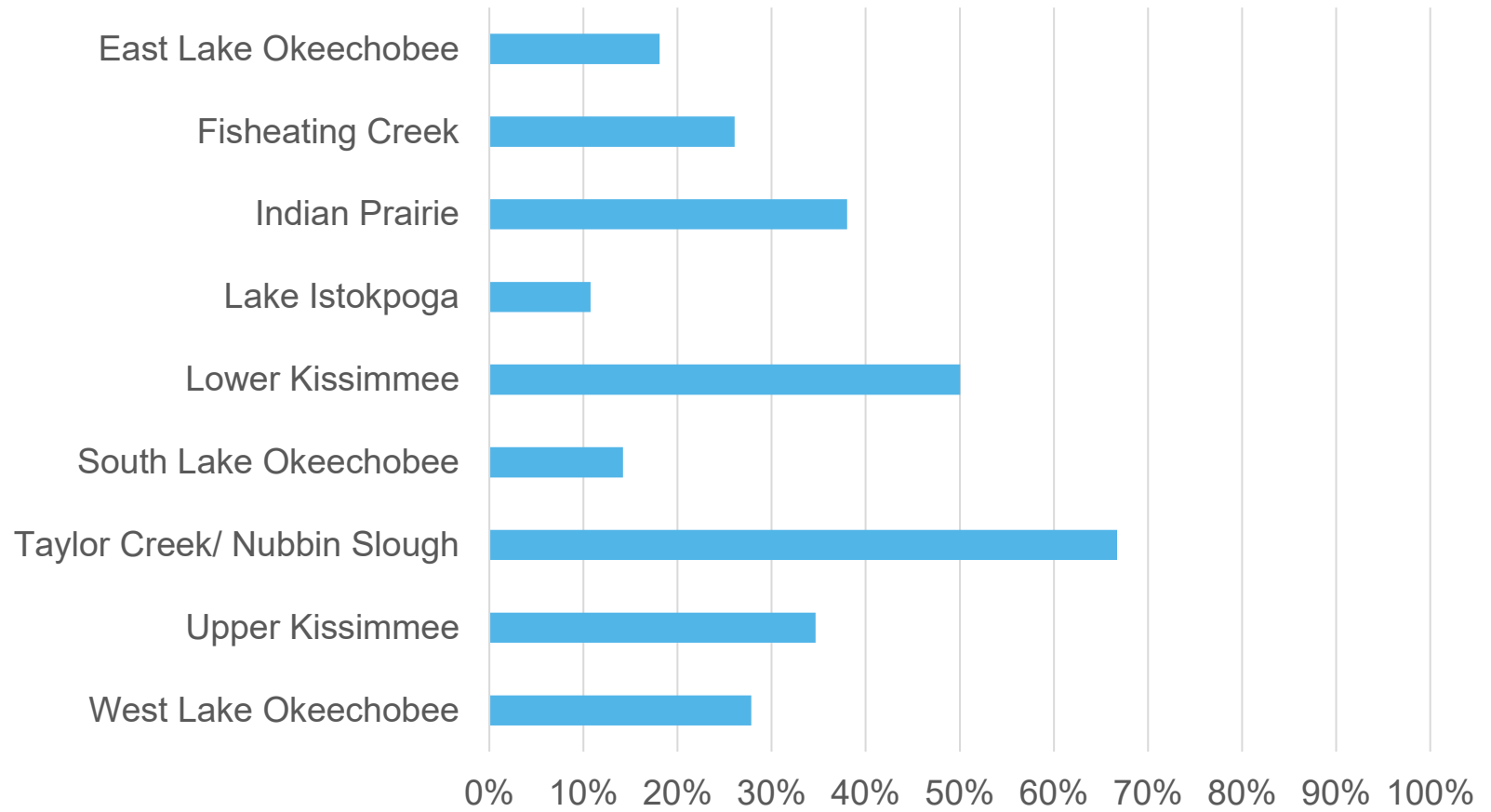
lbs/yr = pounds/yr



LAKE OKEECHOBEE BMAP

***PRELIMINARY** 2025 STAR UPDATE

Progress Toward 2029 TP Milestone by Subwatershed





BMAP UPDATES COMPLETED AND ONGOING EFFORTS

- Water quality data evaluation.
- Water quality trend analyses.
- Hotspot analysis.
- Evaluation of the monitoring network.
- Planning and development of regional projects with partner agencies.
- Identification of projects for BMAP milestones.
- Increased outreach to local governments, special districts and industry .
- Incorporation of Clean Waterways Act requirements.
- Incorporation of House Bill (HB) 1379 and HB 1557 requirements.

The screenshot shows the Florida Department of Environmental Protection website. The main heading is "Northern Everglades and Estuaries Protection Program (NNEPP) BMAPS". Below the heading is a paragraph explaining the program's purpose: "The Northern Everglades and Estuaries Protection Program (NNEPP; section 373.4595, F.S.) was established with the intent to protect and restore surface water resources to achieve water quality standards in the Northern Everglades through a phased, comprehensive and innovative protection program that includes long-term solutions to reduce nutrient loading to meet the state's total maximum daily loads (TMDLs) established in accordance with section 403.067, F.S. The Northern Everglades watersheds include the Lake Okeechobee watershed and the Caloosahatchee and St. Lucie River watersheds and estuaries."

Below the text is a table with three columns: "Waterbodies", "BMAP Documents", and "Contact".

Waterbodies	BMAP Documents	Contact
St. Lucie River and Estuary	<ul style="list-style-type: none"> • 2025 St. Lucie River & Estuary BMAP • 2025 Final Order • Effective date: Nov. 25, 2025 • St. Lucie River & Estuary 5-Year Review: 2023 • St. Lucie River & Estuary 5-Year Review: 2018 	Tony Tomalewski
Caloosahatchee River and Estuary	<ul style="list-style-type: none"> • 2025 Caloosahatchee River and Estuary BMAP • 2025 Final Order • Effective date: Nov. 25, 2025 • Caloosahatchee Estuary BMAP 5-Year Review (2022) • Caloosahatchee Estuary BMAP 5-Year Review (2017) 	Tony Tomalewski
Lake Okeechobee	<ul style="list-style-type: none"> • 2025 Lake Okeechobee BMAP • 2025 Final Order • Effective date: Feb. 6, 2026 • Lake Okeechobee BMAP 5-Year Review (2024) 	Chandler Keenan



POLICY AND REPORTING REMINDERS

<u>Source</u>	<u>Topic</u>	<u>Requirement</u>
Wastewater	Wastewater Effluent Limits	Where the law does not provide effluent limits or a compliance timeframe, new effluent standards will take effect at the time of permit renewal or no later than five years after BMAP adoption , whichever is sooner. Tables 13 and 14 in the BMAP document.
Wastewater	Connection to Sewer	Beginning February 2028 and every two years thereafter , utilities with sewer lines in BMAPs must provide DEP a list of properties with existing OSTDS where sewer is available (as defined in 381.0065, F.S.) but have not connected.
Agriculture	Concentrated animal feeding operations (CAFOs) - Dairies	To minimize infiltration of liquid manure, if a dairy uses a clay liner or some other type of engineered waste storage pond system, within two years of BMAP adoption , the dairy must submit to DEP an evaluation identifying the environmental, technical, and economic feasibility of upgrading to a concrete or geosynthetic liner.



GOLF COURSE REQUIREMENTS

Date	Requirement for <u>Public</u> Golf Courses	Requirement for <u>Private</u> Golf Courses
Dec. 31, 2026	Superintendents must have completed their University of Florida Institute of Food and Agricultural Sciences (UF/IFAS) Golf Course Best Management Practices Program Certification	-
Feb. 6, 2027	Draft Nutrient Management Plan (NMP) Due	Draft NMP Due
Feb. 6, 2028	Final NMP Due	Final NMP Due
Mid-November to Mid-January Annually	Annual reporting during STAR. Beginning November 2028.	Annual reporting during STAR. Beginning November 2028.



BMAP UPDATES

COMPLETED AND ONGOING EFFORTS

- Stakeholder meetings held.
 - Two (2) public meetings/workshops.
 - Eleven (11) individual entity meetings.
 - Monthly coordinating agency calls.
- New stakeholder group added to the BMAP: Golf Courses.
 - Required creation of a golf course database which did not exist prior to 2025.
 - Informational webinar planned for May 2026.
 - Outreach ongoing.
- Okeechobee HSPF models in development.

Limpkin seen on a South Florida golf course during site visit.



Increased coordination with dairy permittees and operators



Lake Okeechobee BMAP Annual Meeting

April 29, 2026

Jennifer Thera

Florida Department of Agriculture and Consumer Services

Office of Agricultural Water Policy



Florida Department of Agriculture and Consumer Services

Office of Agricultural Water Policy (OAWP) Team



West Gregory
Director

West.Gregory@FDACS.gov



Megan Seward
Assistant Director

Megan.Seward@FDACS.gov



Jessica Ferris
Staff Director

Jessica.Ferris@FDACS.gov



OAWP Team: Policy Planning and Coordination



Yesenia Escribano

Bureau Chief

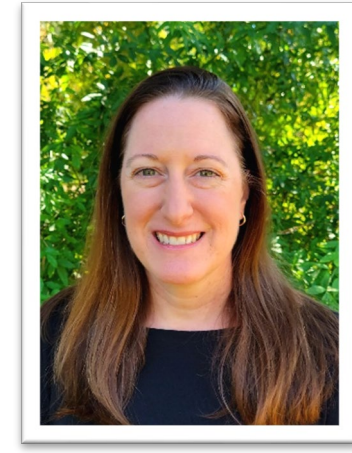
Yesenia.Escribano@FDACS.gov



Maddy Hart

Environmental Administrator

Madeline.Hart@fdacs.gov



Jennifer Thera

NEPP Coordinator

Jennifer.Thera@FDACS.gov



Mission

Implement strategies that protect Florida's water resources while promoting the sustainability of agriculture.



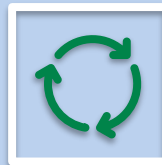
Strategic Goals



Expand and enhance agricultural Best Management Practice (BMP) implementation.



Ensure the availability of an adequate and sustainable agricultural water supply.



Manage cost share programs that support agricultural non-point source BMP implementation and water resource protection projects.

BMP Manuals

OAWP recently updated 9 manuals and adopted a 10th, new manual for Small Farms and Specialty Livestock



Manual	Last Updated	Stage	Dates
Sod	2008	Rule Effective	November 12, 2024
Cattle	2009	Rule Effective	December 22, 2024
Procedures	2021	Rule Effective	October 30, 2024
Small Farms and Specialty Livestock	New!	Rule Effective	February 23, 2025
Specialty Fruit and Nut	2011	Rule Effective	February 24, 2025
Citrus	2013	Rule Effective	March 4, 2025
Nursery	2014	Rule Effective	March 12, 2025
Vegetable and Agronomic Crop	2015	Rule Effective	February 27, 2025
Poultry	2016	Rule Effective	February 13, 2025
Dairy	2016	Rule Effective	March 5, 2025
Equine	2012	Rule Effective	March 12, 2025

<https://www.fdacs.gov/Divisions-Offices/Agricultural-Water-Policy/Rule-Development-Activities>

Producer Options in BMAP Areas

1. Enroll in our BMP Program and properly implement applicable BMPs for presumption of compliance, OR
2. Follow an FDEP or WMD-prescribed water quality monitoring plan at a producer's expense



Enrollments within the Lake Okeechobee BMAP

Subbasin	Total Ag Acres	Enrolled Ag Acres	% Enrolled	Irrigated Acres	Enrolled Irrigated Acres	% Enrolled
East Lake Okeechobee	88,751	68,486	77%	35,334	32,034	91%
Fisheating Creek	211,949	188,147	89%	11,178	7,168	64%
Indian Prairie	228,608	184,775	81%	59,238	44,917	76%
Lake Istokpoga	134,634	107,026	79%	41,251	35,763	87%
Lower Kissimmee	256,728	197,114	77%	21,061	19,341	92%
South Lake Okeechobee	326,968	318,237	97%	322,295	316,076	98%
Taylor Creek/Nubbin Slough	144,066	115,988	81%	12,259	10,890	89%
Upper Kissimmee	255,339	171,737	67%	33,217	27,234	82%
West Lake Okeechobee	146,531	129,748	89%	75,102	70,900	94%

FDACS BMP Program enrollment as of Dec 2025 and the Draft 13th [FSAID](#) Geodatabase



Agricultural Acres Enrolled within Lake Okeechobee BMAP

BMP Manual	Acres
Cattle	596,808
Citrus	62,319
Conservation Plan	138,573
Dairy	9,489
Equine	906
Lake Okeechobee Protection Plan	935
Multiple Commodities	294,185
Nursery	2,085
Poultry	45
Specialty Fruit & Nut	524
Sod	3,649
Vegetable & Agronomic Crop	368,603
Wildlife	3,137
TOTAL	1,481,258



BMP Cost Share within NEEPP

Since 2024



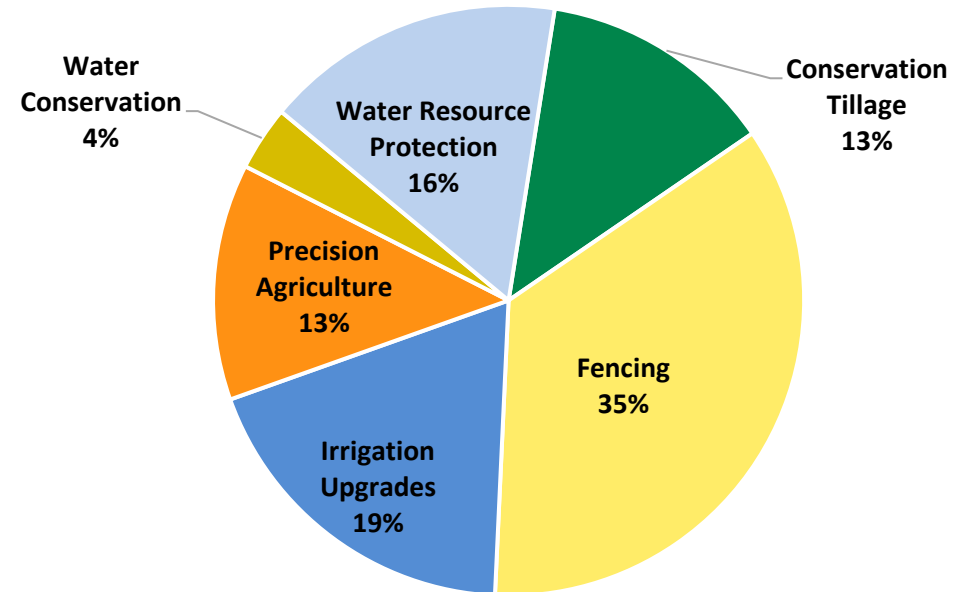
Project Count: 89



Reimbursement: \$4,046,090



Producers: 71



Category	Examples of Information Collected
Fencing	Grazing schedule; Map of fence cost-share; Map of resource concerns on site; Stocking rate (greater/less than threshold depending on species and property size); Sensitive features on the property; Purpose of fencing (e.g., rotational grazing)
Irrigation Upgrades (often automated)	Mobile Irrigation Lab (MIL) data; Irrigated acres; Irrigation frequency; Whether fertigating; Nitrogen and phosphorus rates from fertigation; Prior irrigation type; Whether irrigation systems are automated; Number of automated vs. non-automated systems
Alternative Water for Livestock	GPS location; Sensitive features on the property; Whether rotational grazing will be used year-round; Presence of cross-fencing; Top three benefits for the operation
Culverts	Volume; Whether a nutrient reduction has been calculated (and whether one could be calculated to support funding); Active time of year; Presence of open culverts (if applicable)



Agricultural Regional Projects

Floating Aquatic Vegetative Tilling (FAVT)

- East Caloosahatchee (1)
- Arbuckle Creek (5)*
- Fisheating Creek (6)

Hybrid Wetland Treatment Technology (HWTT)

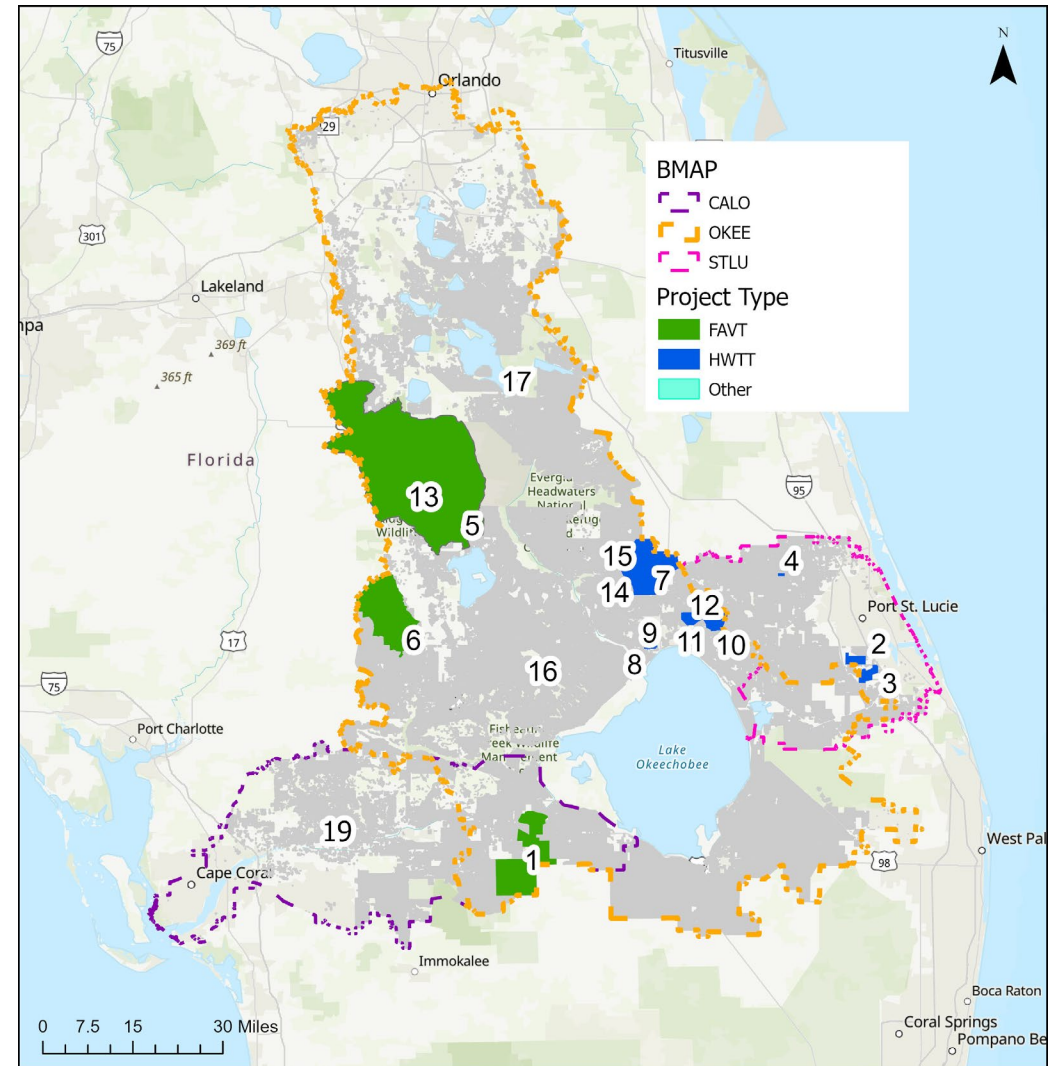
- Bessey Creek (2)
- Danforth Creek (3)
- Grassy Island (7)
- Ideal Holding (4)
- Lemkin Creek (8)/Wolff Ditch (9)
- Nubbin Slough (10)
- Mosquito Creek (11)
- Taylor Creek/Nubbin Slough (18)*

Other Projects

- Larson Dairy (12)*
- Triple G Dairy (13)*
- Milking R Dairy (14)*
- Bassett Grove Water Storage & Treatment (15)*
- Lykes Brothers - Harney Pond (16)
- Cypress Chapter (17)*
- Four Corners (19)

*New projects that have not been completed

Lake Okeechobee:
 Total TN Reductions: 90,603 lbs/yr
 Total TP Reductions: 19,042 lbs/yr



2025 FDACS Legislative Annual Report – Available July 1

<http://www.fdacs.gov/Divisions-Offices/Agricultural-Water-Policy>



Florida Department of Agriculture and Consumer Services
Office of Agricultural Water Policy



Status of Implementation of Agricultural Nonpoint Source Best Management Practices

July 1, 2026

Report to the Governor, the President of the Senate, and the Speaker of the House
Pursuant to Section 403.0675(2), F.S.

Publication No: FDACS-P-01924 Rev. 07/26

1

Thank You!

<http://www.fdacs.gov/Divisions-Offices/Agricultural-Water-Policy>

Jennifer Thera, Environmental Consultant
Jennifer.Thera@FDACS.gov – (850) 617-1722



SFWMD Update

Lake Okeechobee Watershed Construction Project

Stacey Ollis, PMP

Principal State Policy Analyst
Everglades and Estuaries Protection Bureau
Lake Okeechobee BMAP Annual Meeting

April 29, 2026

SFWMD Update

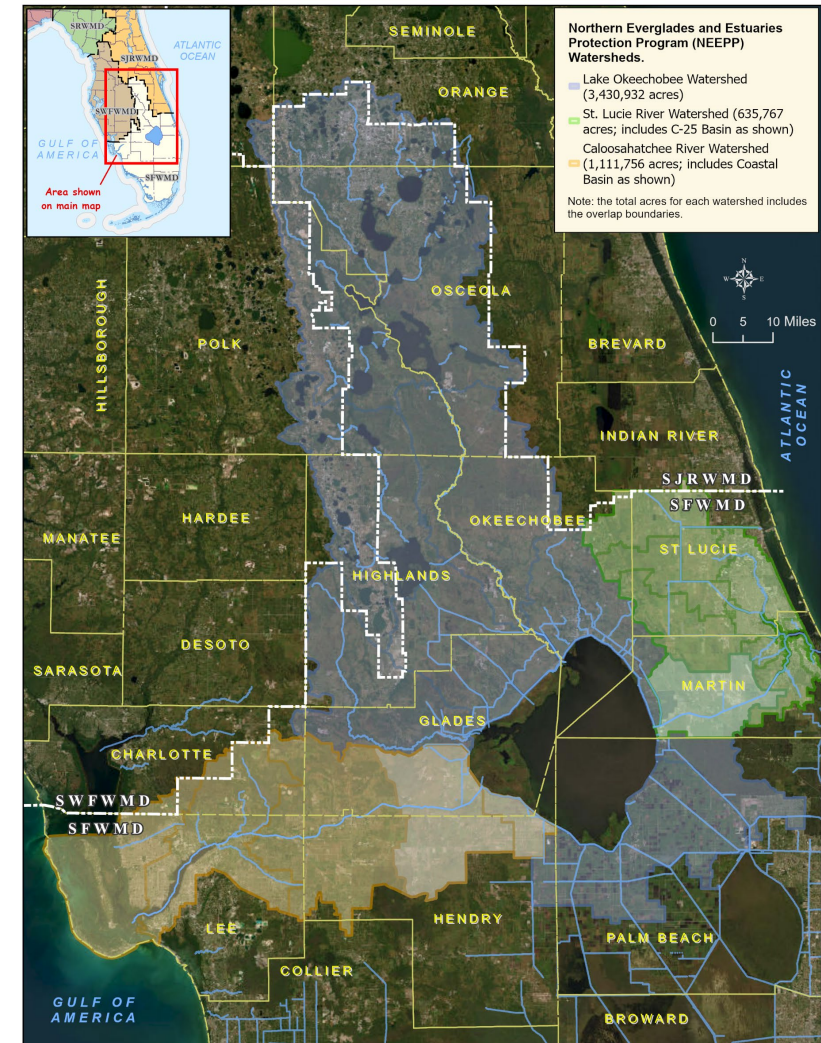


Sandhill cranes, Lake Okeechobee

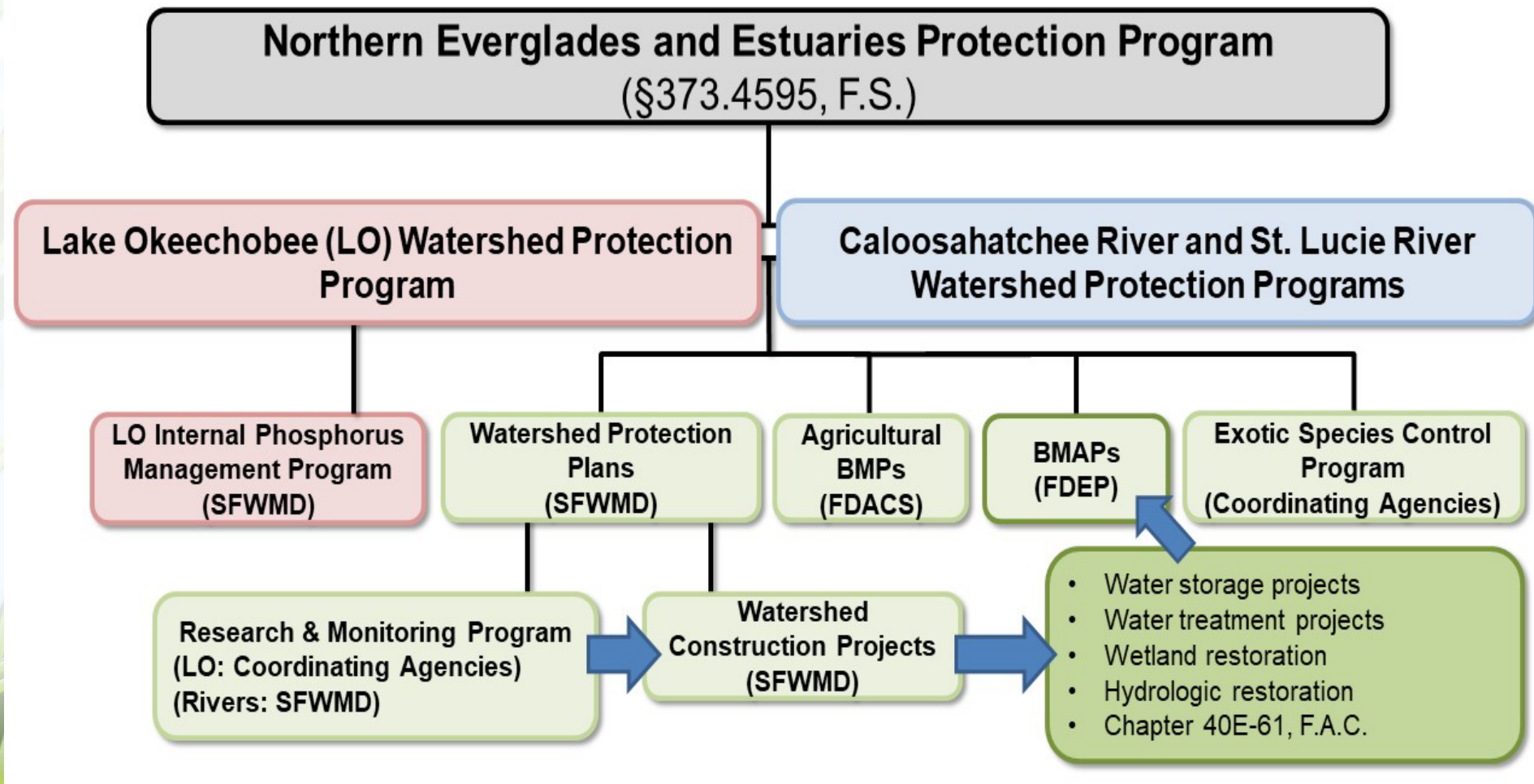
- Northern Everglades Program Overview
- 2026 Lake Okeechobee Watershed Construction Project Review
 - Project Spotlights
 - Water Storage Benefits
- Watershed Protection Plan Reporting

Northern Everglades and Estuaries Protection Program (NEEPP)

- Purpose: Protect and restore surface water resources by improving hydrology and water quality for the Northern Everglades ecosystem (§373.4595, Florida Statutes)
- Goal: Improve Water Quality
 - Lake Okeechobee: Total Phosphorus (TP)
 - Caloosahatchee Estuary: Total Nitrogen (TN)
 - St. Lucie Estuary: TP and TN
- Goal: Manage Water Quantity
 - Increase water storage north of Lake Okeechobee and in Caloosahatchee and St. Lucie River Watersheds



NEEPP: Coordinating Agencies Roles



Lake Okeechobee Watershed Construction Project Review

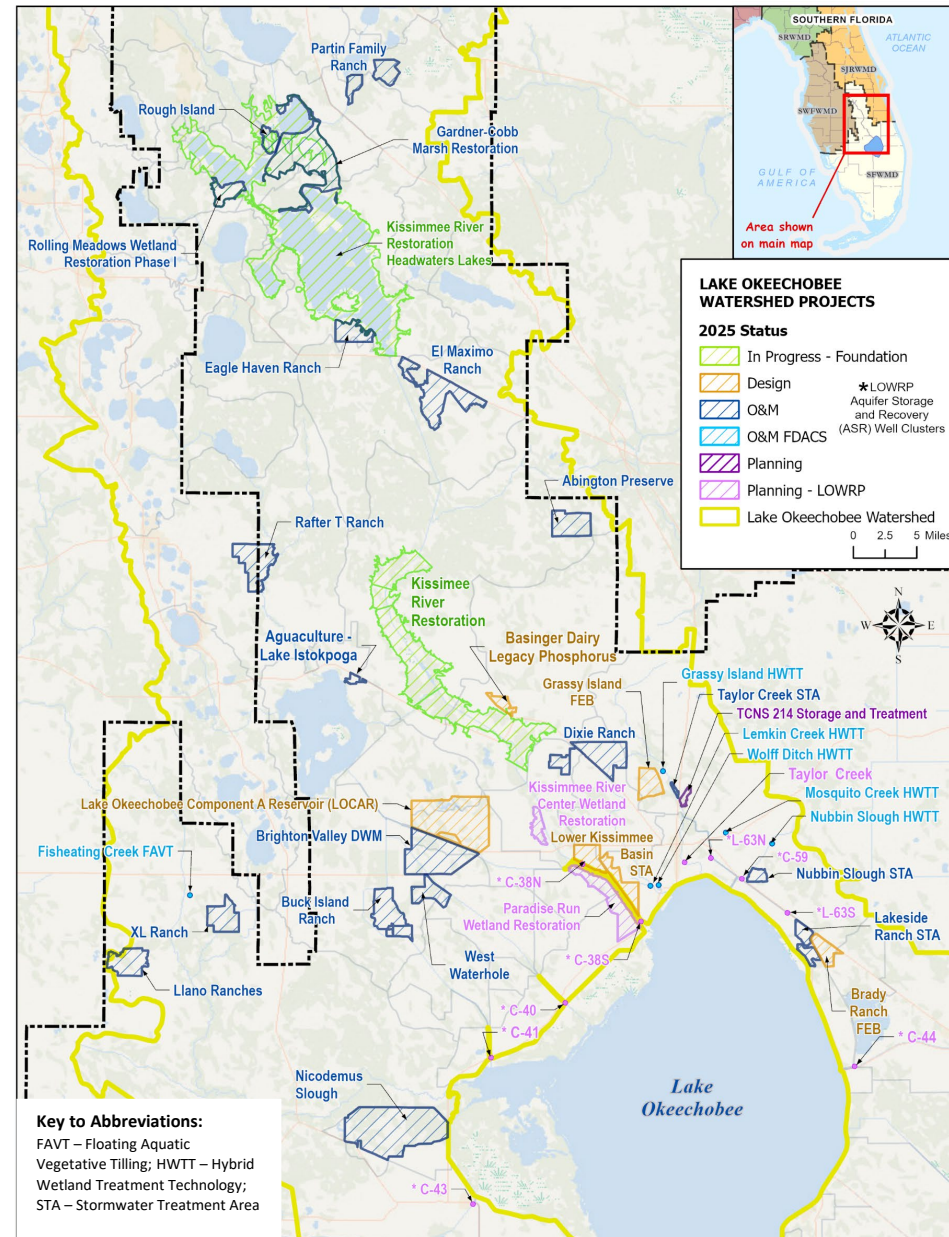
- Since 2020, SFWMD completed annual Lake Okeechobee Watershed Construction Project (LOWCP) reviews, as part of the Watershed Protection Plan (WPP) reviews
- Annual reviews are important to:
 - Maintain transparency and accountability in BMAP process
 - Assist to progressively move toward achieving state's TMDLs
 - Consolidate into NEEPP annual progress reporting (South Florida Environmental Report, or SFER) per §373.4595(6), F.S.
 - ***Develop and update WPPs required every five years***
- 2026 LOWCP Review
 - Project performance – Water Year (WY) 2025 (Apr. 1, 2024–May 30, 2025)
 - Key accomplishments – Fiscal Year (FY) 2025 (Oct. 1, 2024–Sept. 30, 2025)
 - Final 2026 SFER – Volume I, Chapter 8B (March 1, 2026) at [SFWMD.gov/SFER](https://www.sfwmd.gov/SFER)

Project Progress

- 2025 LOWCP Status:
 - 1 project – planning
 - 4 projects – design
 - 19 projects – operations



Lake Okeechobee



Project Spotlights

- Kissimmee River Restoration Project & Headwater Lakes Regulation Schedule
- El Maximo Ranch
- Lower Kissimmee Basin Stormwater Treatment and Recreation Area
- Basinger Legacy Phosphorus Study
- Northern Everglades Watersheds Water Retention and Nutrient Load Reduction Projects



The Kissimmee River and its floodplain



US Army Corps of Engineers

Kissimmee River Restoration Project

CONSTRUCTION COMPLETION

- Ribbon Cutting Ceremony July 2021
- 44 miles of historic river channel natural flow reestablished/open to public access

KISSIMMEE HEADWATERS REVITALIZATION REGULATION SCHEDULE

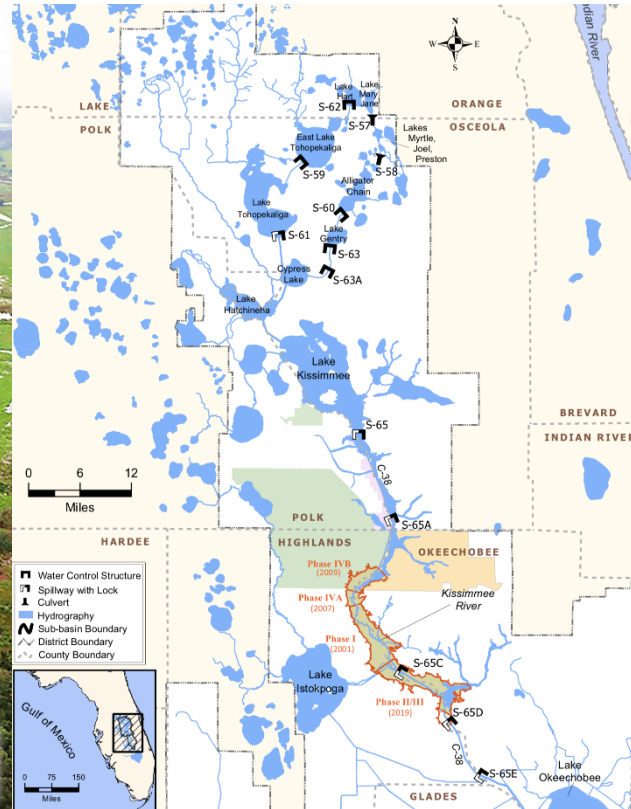
- Incremental Implementation (2023-2027)

EVALUATION MONITORING

- 5-Year Post-Restoration Monitoring Period (2028-2032)



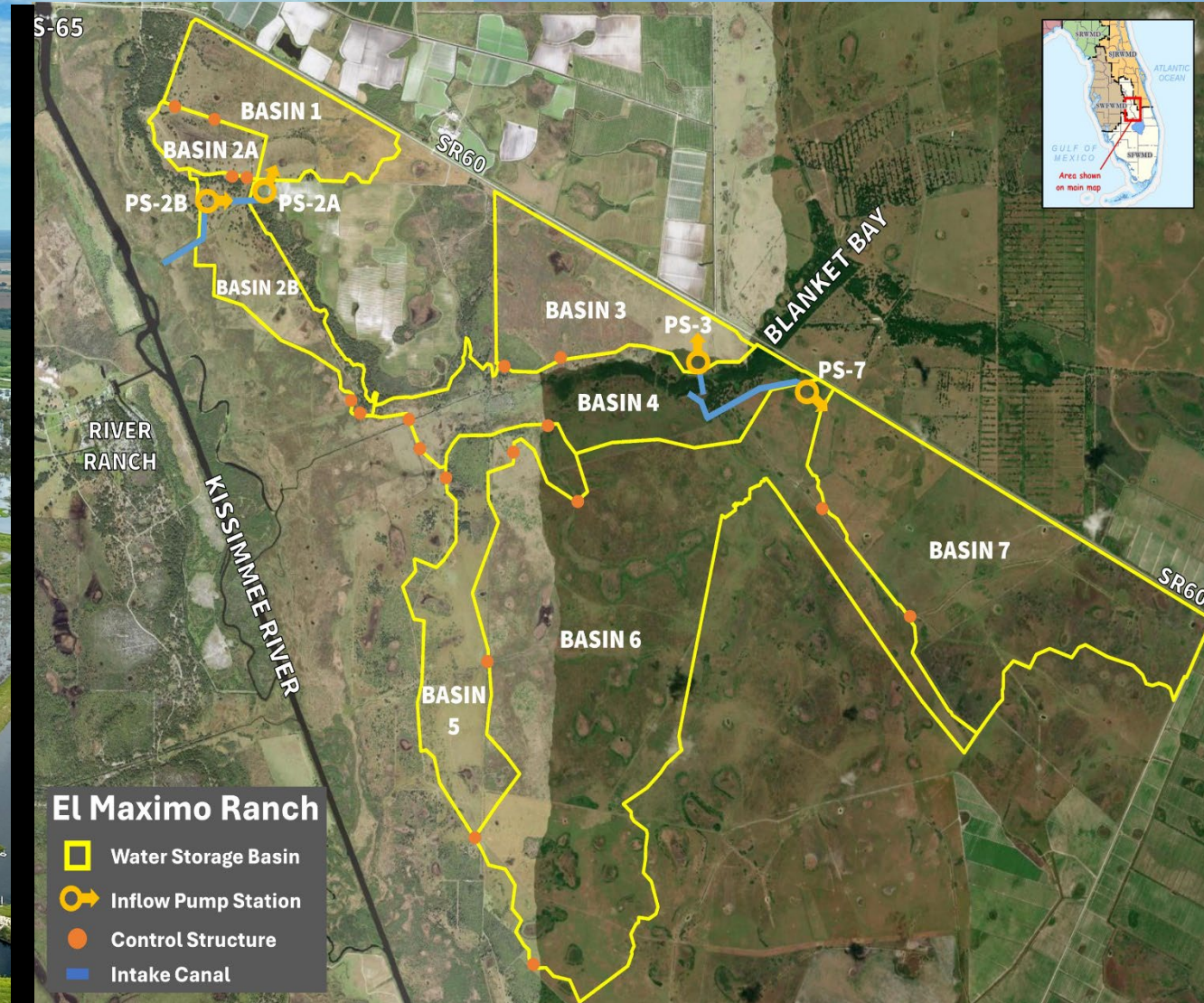
Phase II Restoration Area looking southeast downstream Riverwoods Run and floodplain



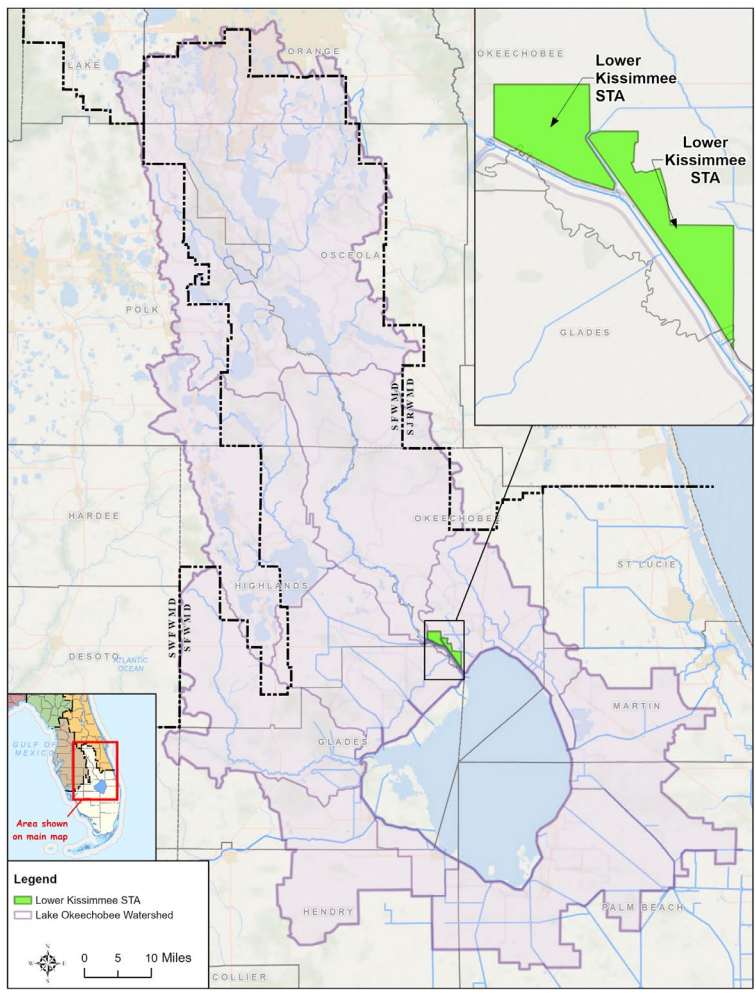
S-69 Weir and Phase II Restoration Area looking upstream

El Maximo Ranch

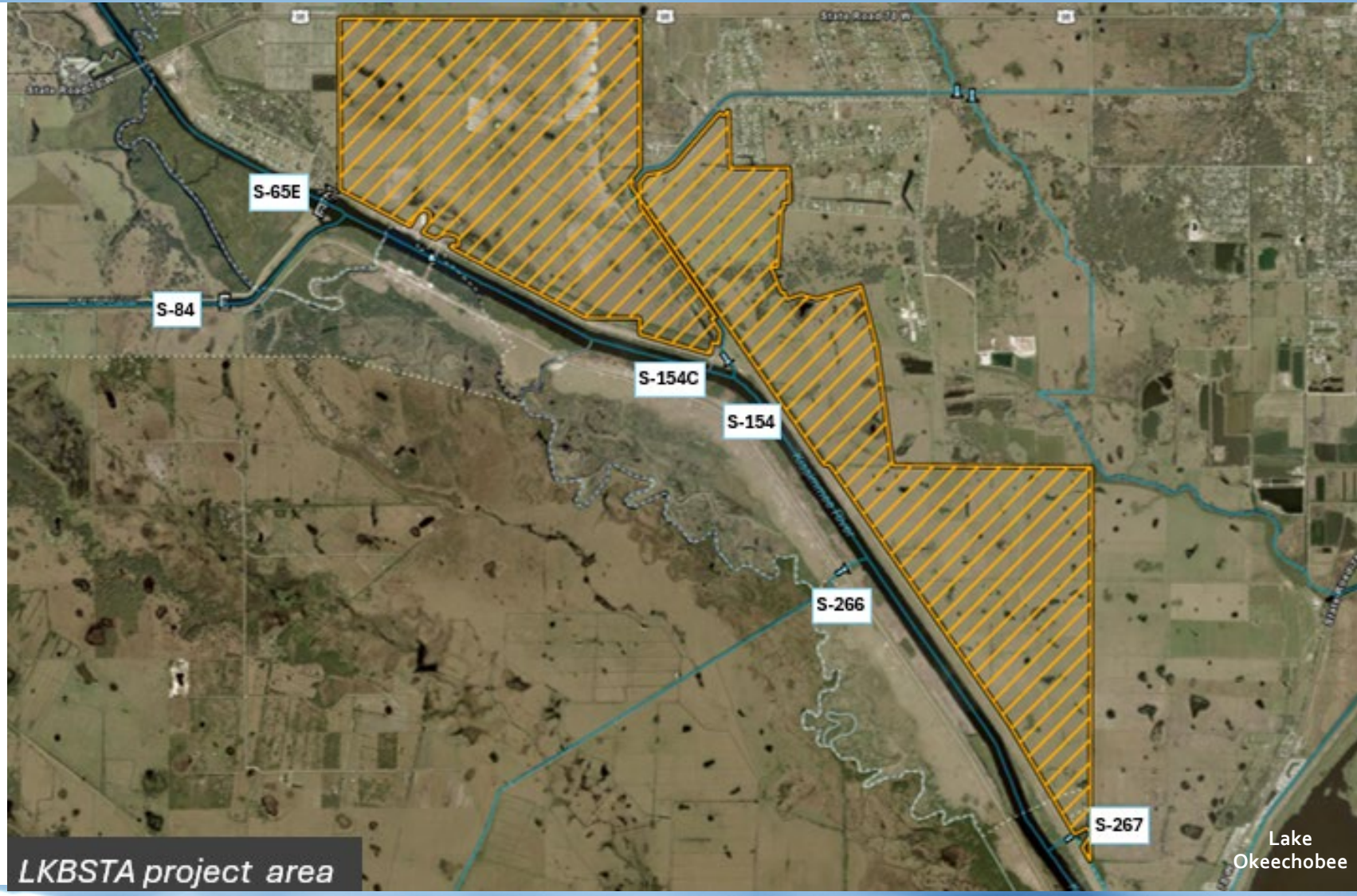
El Maximo Ranch,
treatment cells at full capacity



Lower Kissimmee Basin Stormwater Treatment and Recreation Area

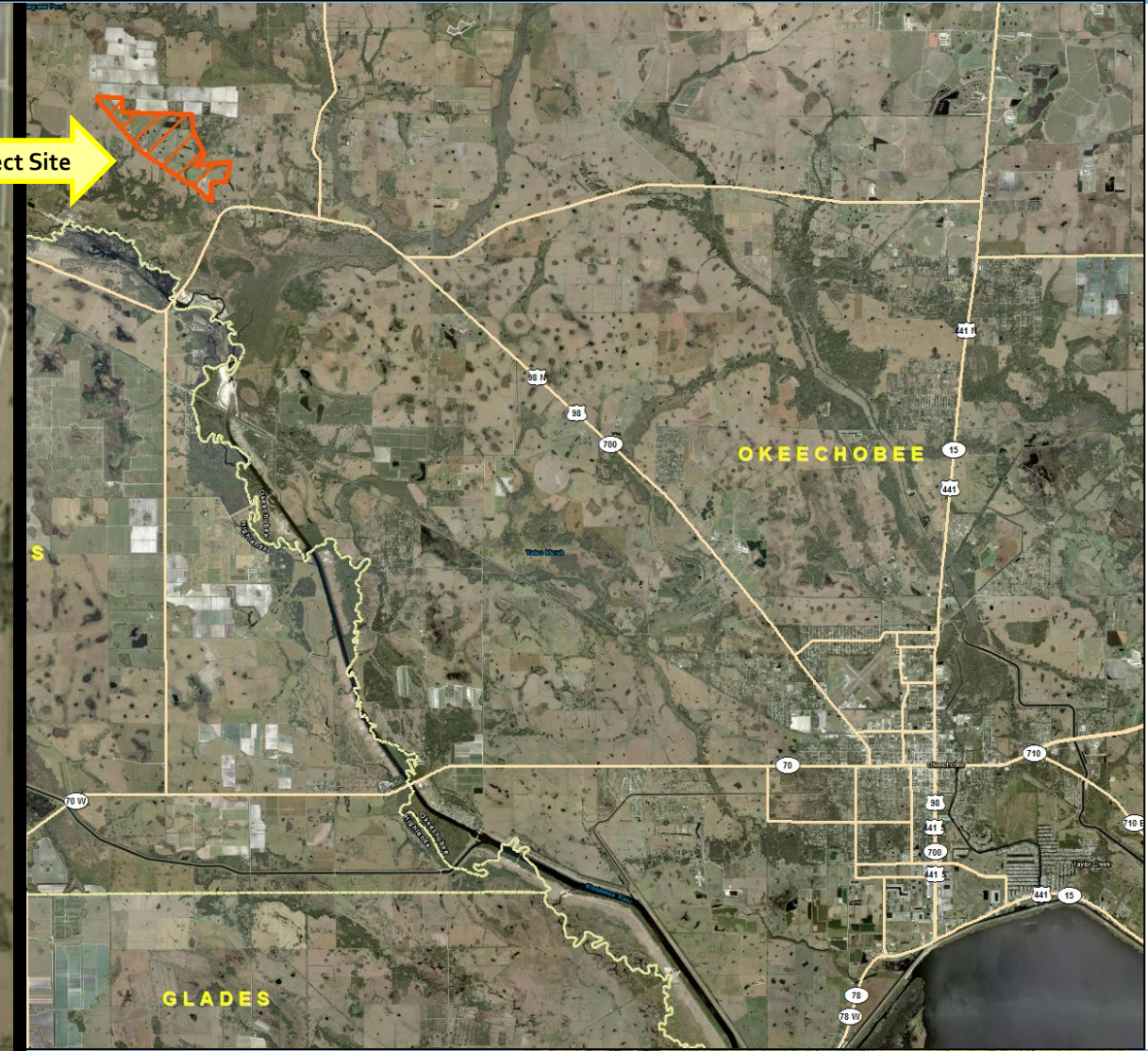


SFWMD.gov/LKBSTA



LKBSTA project area

Basinger Dairy Legacy Phosphorus Study



Northern Everglades Watersheds

Water Retention and Nutrient Load Reduction Projects

Aguaculture Nutrient Removal

- Innovative project to divert and retain TP from Lake Istokpoga, thereby reducing nutrient loads to Lake Okeechobee.
 - Mechanical harvesting of unconsolidated muck from Lake Istokpoga
 - To be applied as a nutrient amendment on private lands
- Estimated benefits (per year):
 - 4.5 mt TP removal
 - Pay-for-performance basis



Partin Family Ranch



- Water and nutrient retention project
 - 3,050 acres on private land in Osceola County
- Estimated benefits (per year):
 - 4,270 ac-ft storage
 - 0.4 mt TP removal
 - 5.2 mt TN removal

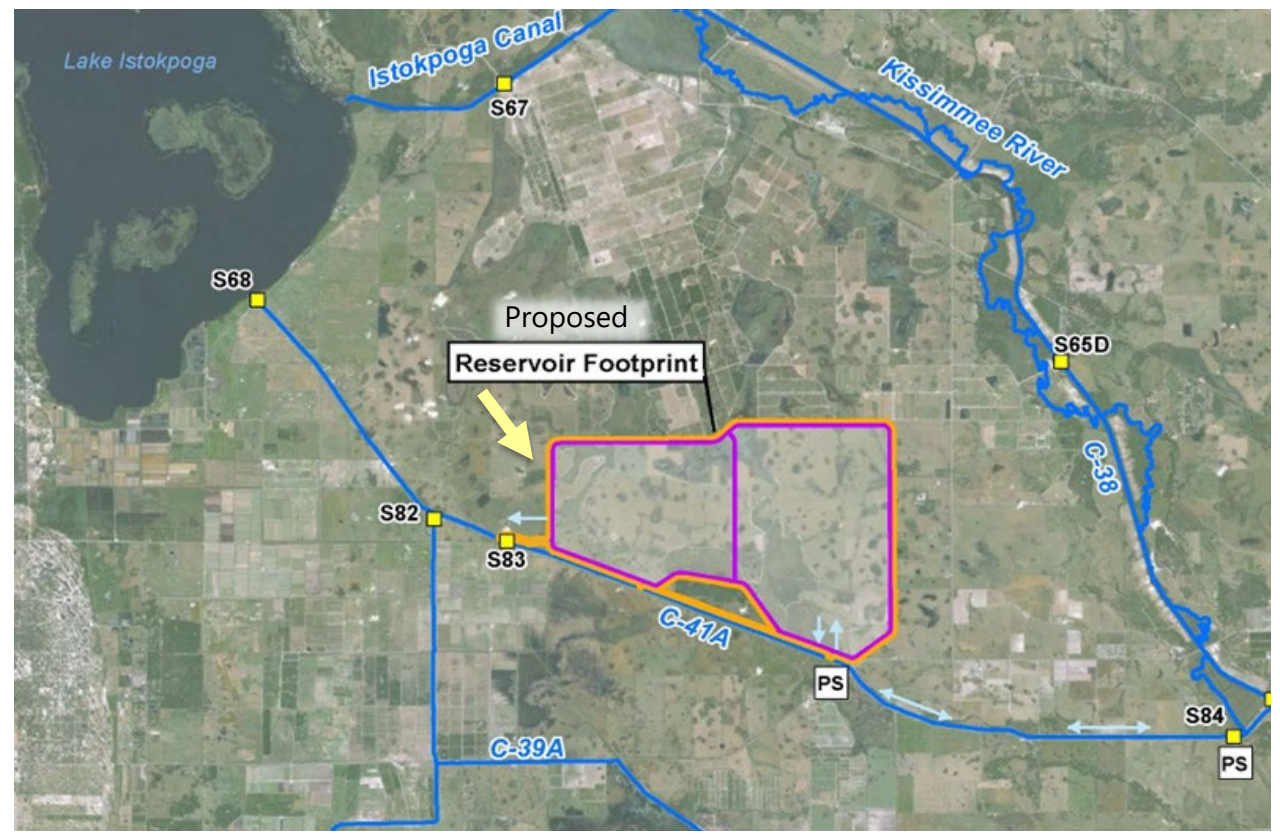


US Army Corps of Engineers

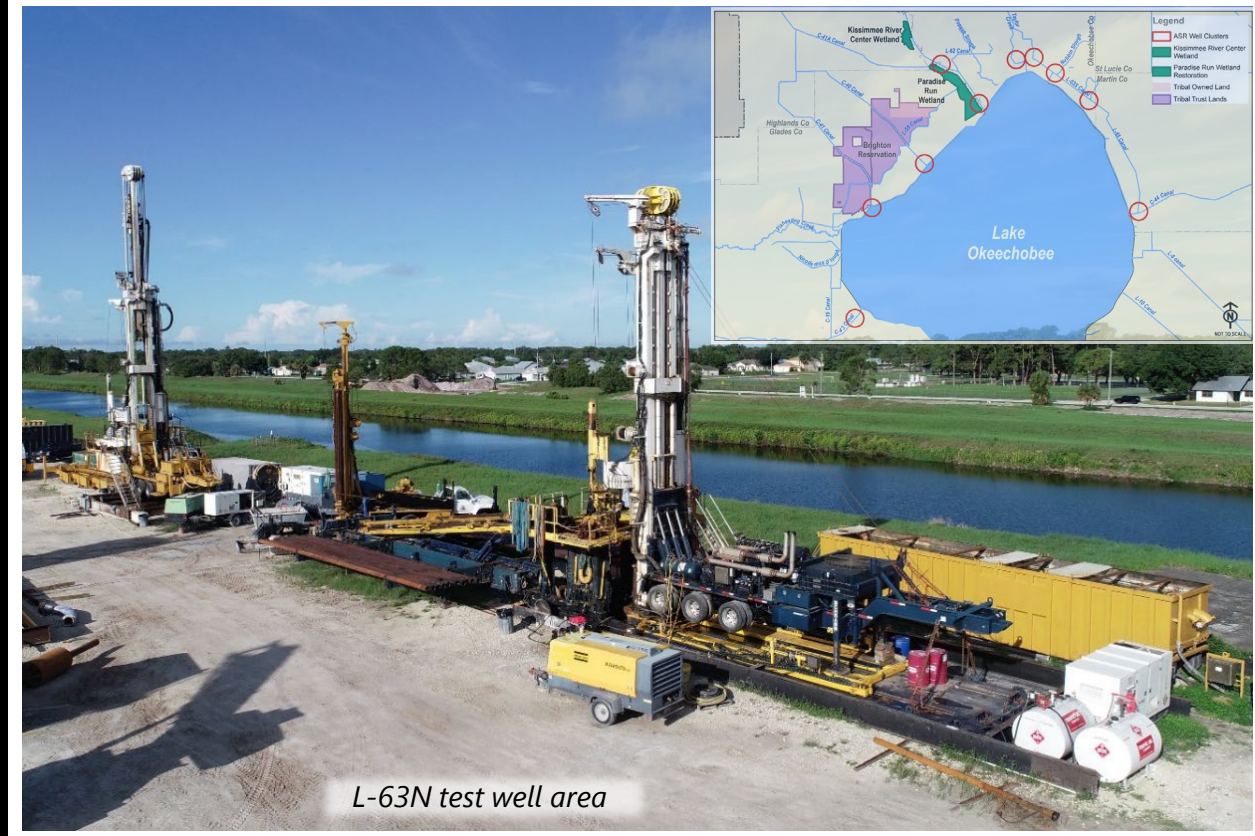
Regional LOW CERP Projects

Lake Okeechobee Component A Reservoir (LOCAR)

Aquifer Storage and Recovery (ASR) for Lake Okeechobee – LOWRP



SFWMD.gov/LOCAR



L-63N test well area

SFWMD.gov/ASR

Project Benefits

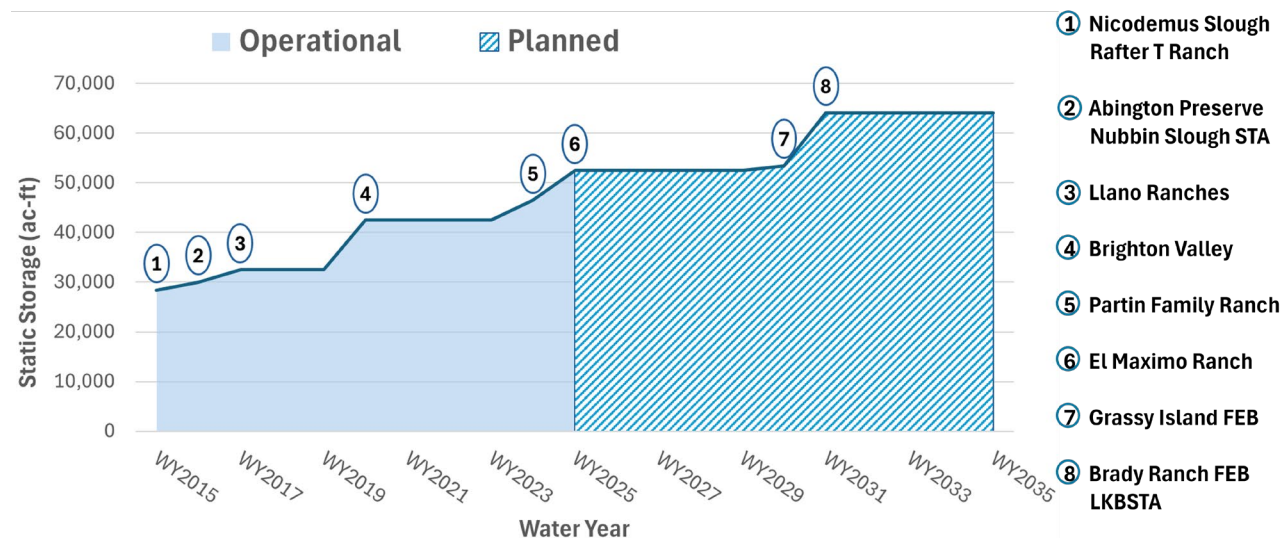
Progress Toward Water Quality and Storage Goals

- During 2025, operational projects provided over:
 - 28 metric tons of total phosphorus retention
 - 265 metric tons of total nitrogen retention
 - 95,000 acre-feet of dynamic storage
- Future planned projects to add even more storage capacity to help achieve watershed goals

Dynamic Storage

The total volume of water held over a specific period of time. In the 2026 SFER, project performance was assessed during the WY2025 period.

Increasing Storage Capacity in the Lake Okeechobee Watershed



Plus, more than 353,000 ac-ft of storage is planned beyond 2035 for this watershed.

Static Storage

The volume of water retained at maximum capacity, usually up to the point of discharge. The static storage target for the Lake Okeechobee Watershed is 900,000 to 1,300,000 acre-feet.

Watershed Protection Plan Reporting

For more information, visit:

[SFWMD.gov/WPPs](https://www.sfwmd.gov/WPPs)

and

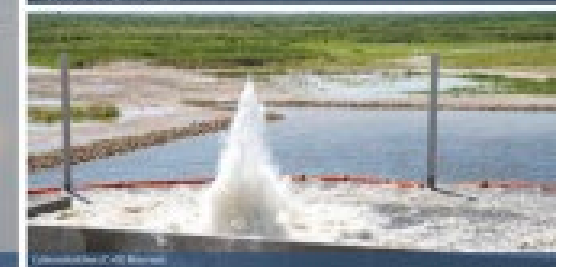
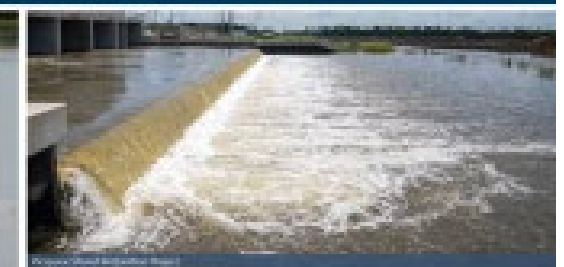
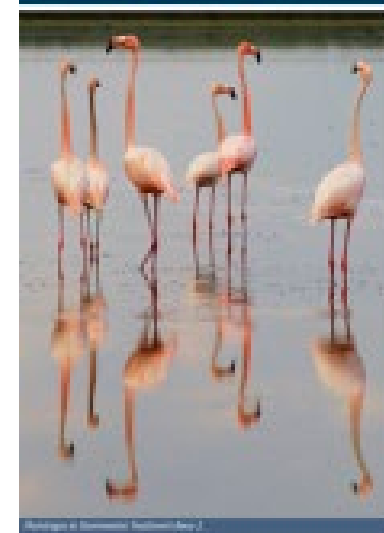
[SFWMD.gov/SFER](https://www.sfwmd.gov/SFER)

(Final 2026 SFER –
Volume I, Chapter 8B)



HIGHLIGHTS

The South Florida Environmental Report (SFER) documents an important year of restoration, scientific and engineering accomplishments at the Kissimmee River, Lake Okechobee, Everglades and South Florida coastal areas. The report also provides extensive peer-reviewed research summaries, data analysis, financial updates and a searchable database of environmental projects. The report covers environmental information for water year 2025 (WY2025: May 1, 2024–April 30, 2025) and project budgetary and construction information for the South Florida Water Management District (SFWMD-District) for Fiscal Year 2025 (FY2025: October 1, 2024–September 30, 2025). This year's SFER Highlights also cover the many achievements and progress made over the past seven years in accelerating key water quality improvements and Everglades-restoration projects, in line with the Executive Order 19-11 Accelerating Flow Restoration for Florida's Environment, January 2019, Executive Order 21-86 Accelerating Everglades Flow for Florida's Environment, January 2021, and the Landbank Agreement, July 2023. The full report is available at [SFWMD.gov/SFER](https://www.sfwmd.gov/SFER).



Contact Information

Stacey Ollis, PMP

Principal State Policy Analyst

Everglades & Estuaries Protection Bureau

South Florida Water Management District

sollis@sfwmd.gov; 561-682-2039



sfwmd.gov



QUESTION BREAK

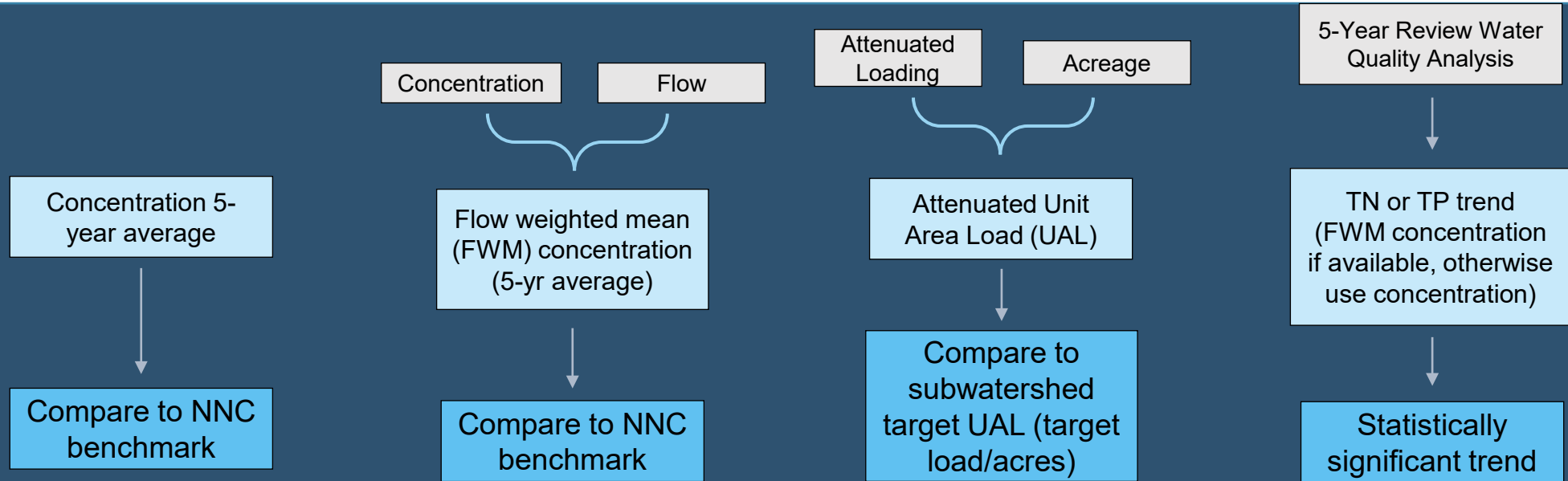
Questions

Please use the Questions panel to submit questions for Coordinating Agencies.





TARGETED RESTORATION AREA (TRA) EVALUATION APPROACH



Step 1

Priority 1: Greater than twice the benchmark

Priority 2: Greater than benchmark, but less than twice benchmark value

Priority 3: Equal to or less than benchmark

or

Step 2

Priority 1: Greater than twice the benchmark

Priority 2: Greater than benchmark, but less than twice benchmark value

Priority 3: Equal to or less than benchmark

.....>

Step 3

Move up one priority: Greater than 50% above subwatershed target UAL

Maintain priority: Less than 50% above watershed target UAL

Move down one priority: less than subwatershed target UAL

.....>

Step 4

Move up one priority: Statistically significant increasing trend

Maintain priority: No statistically significant trend

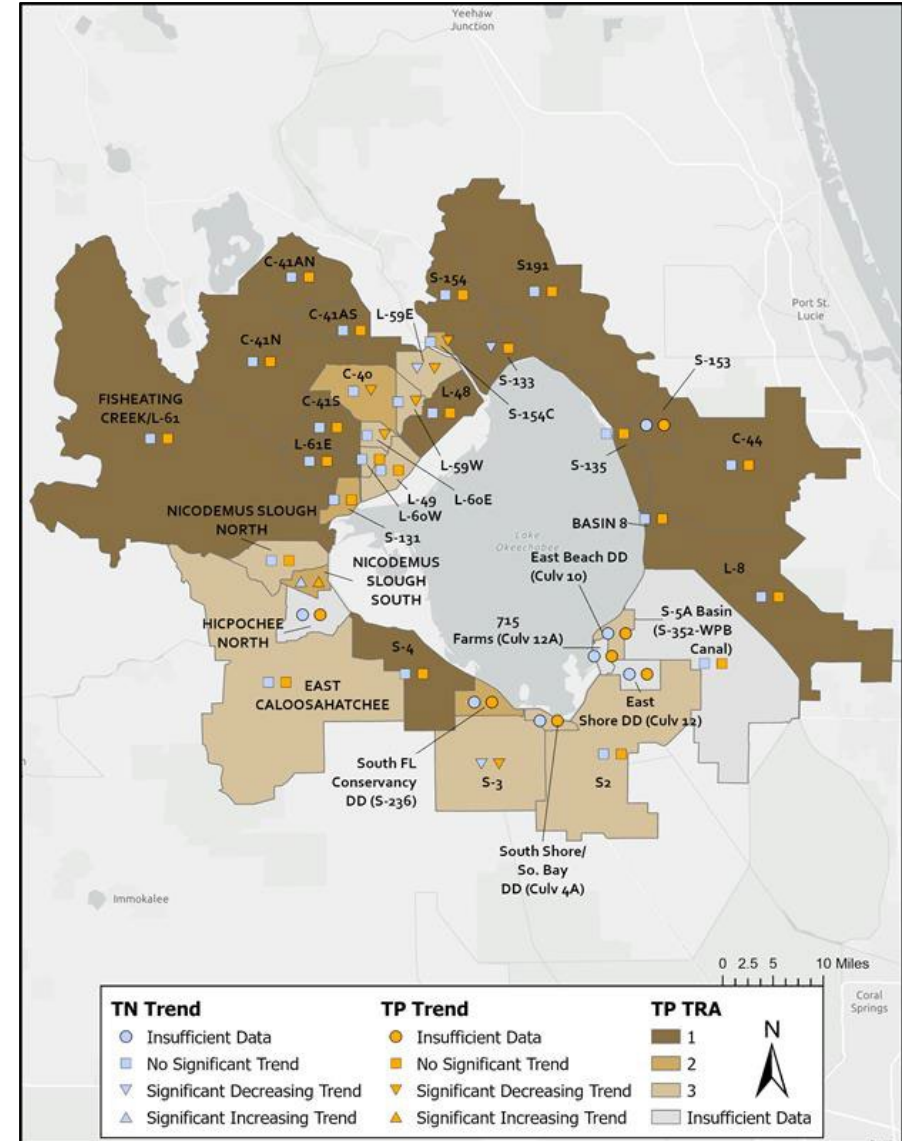
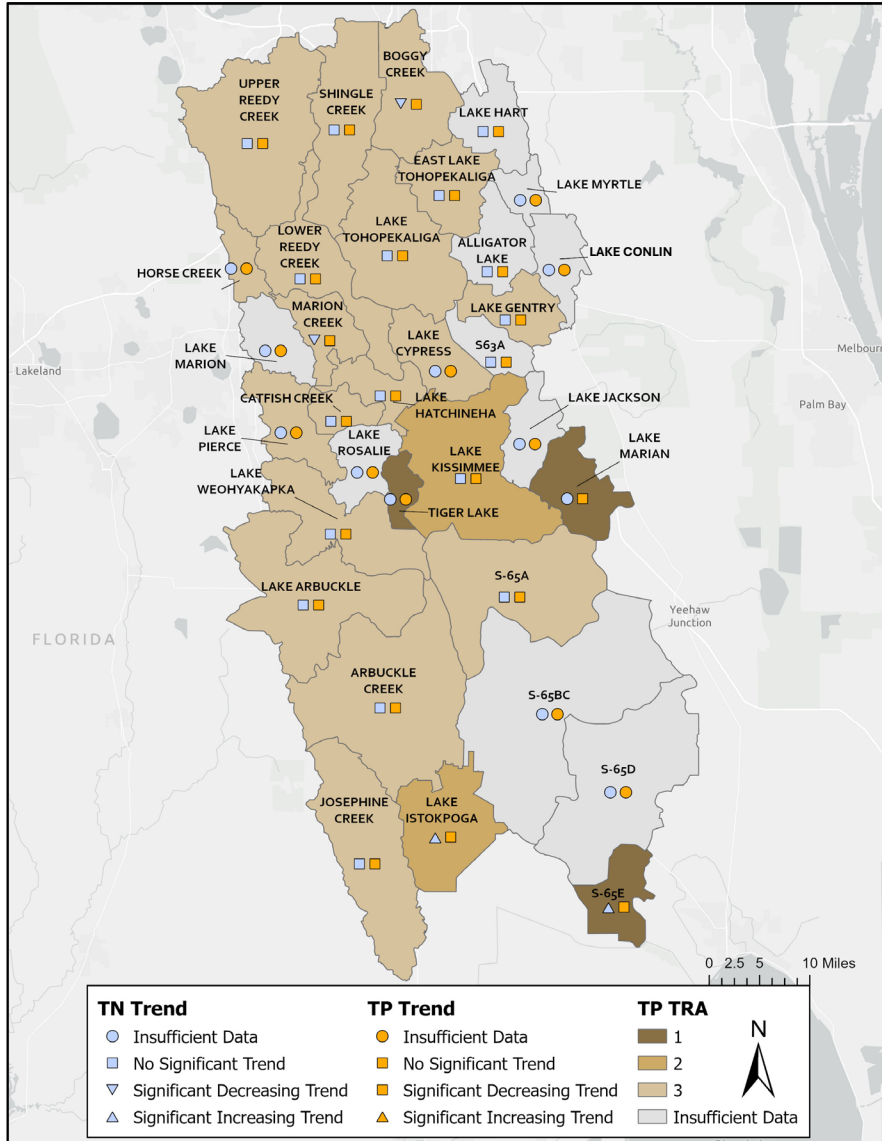
Move down one priority: Statistically significant decreasing trend

NNC = Numeric Nutrient Criteria



TRA AND TRENDS EVALUATION

2025 EVALUATION RESULTS





TETRA TECH

Lake Okeechobee Model Update

April 29, 2026

Model History and Scope Overview

- Current model is the Watershed Assessment Model (WAM).
- Florida Department of Environmental Protection's (DEP) goal is to have one consistent modeling approach across the Northern Everglades basin management action plans (BMAPs):
 - Hydrological Simulation Program – FORTRAN (HSPF) watershed model.
 - ArcGIS-Based Nutrient Load Estimation Toolbox in Python (ArcNLET-Py) for septic systems.
- Project is to prepare a model that represents total phosphorus (TP) and total nitrogen (TN) loading throughout the watershed.
 - Use to assist DEP with a future BMAP update.

Tasks

- Inventory available data.
 - Completed – memo provided for stakeholder input in December 2025.
- Delineate and setup model.
 - Completed – DEP and agency review occurred in January and March 2026.
- Calibrate watershed hydrology.
 - Underway.
- Calibrate watershed water quality.
- Develop an ArcNLET-Py model to represent septic systems.
 - Underway.
- Prepare a final model report.
- Prepare a load estimation tool (LET) for future BMAP update.



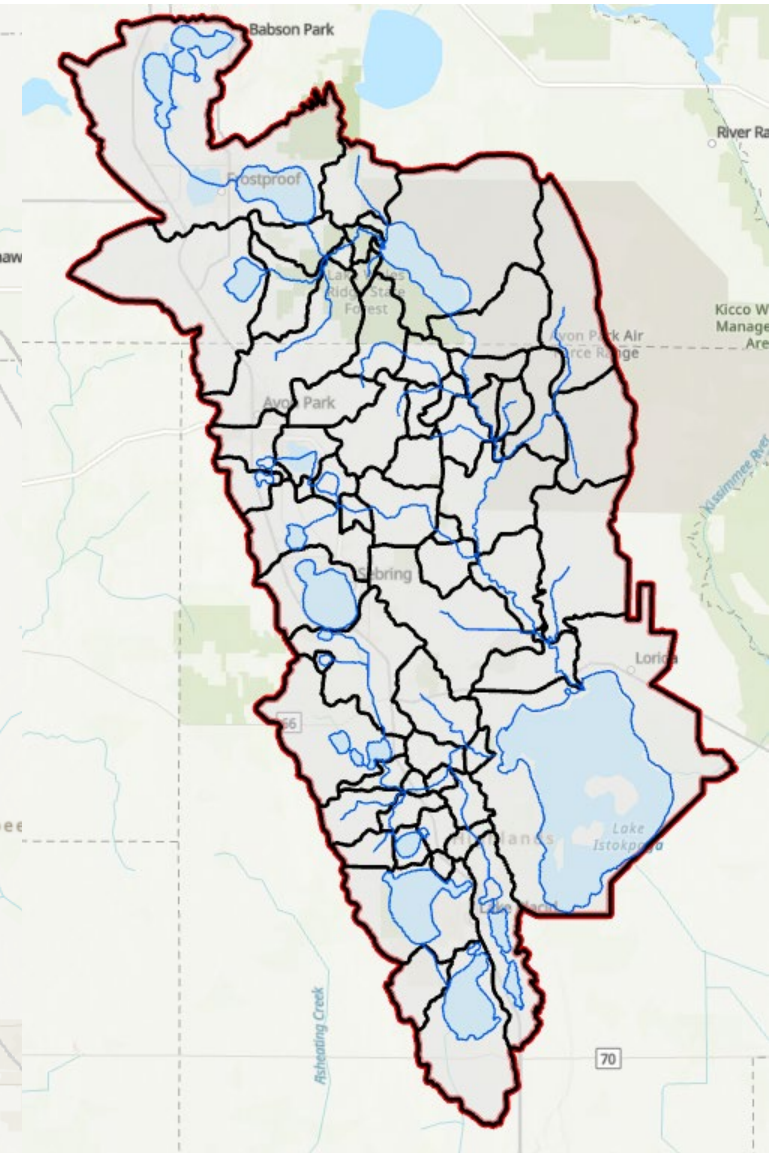
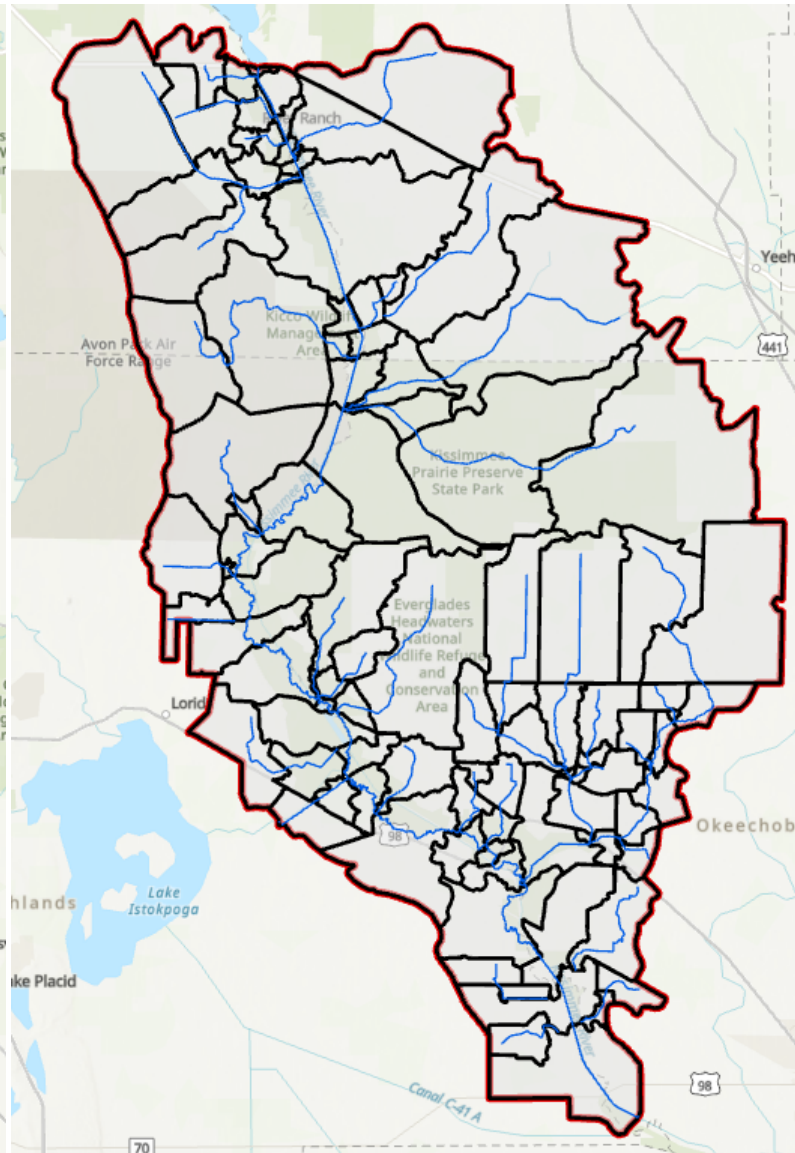
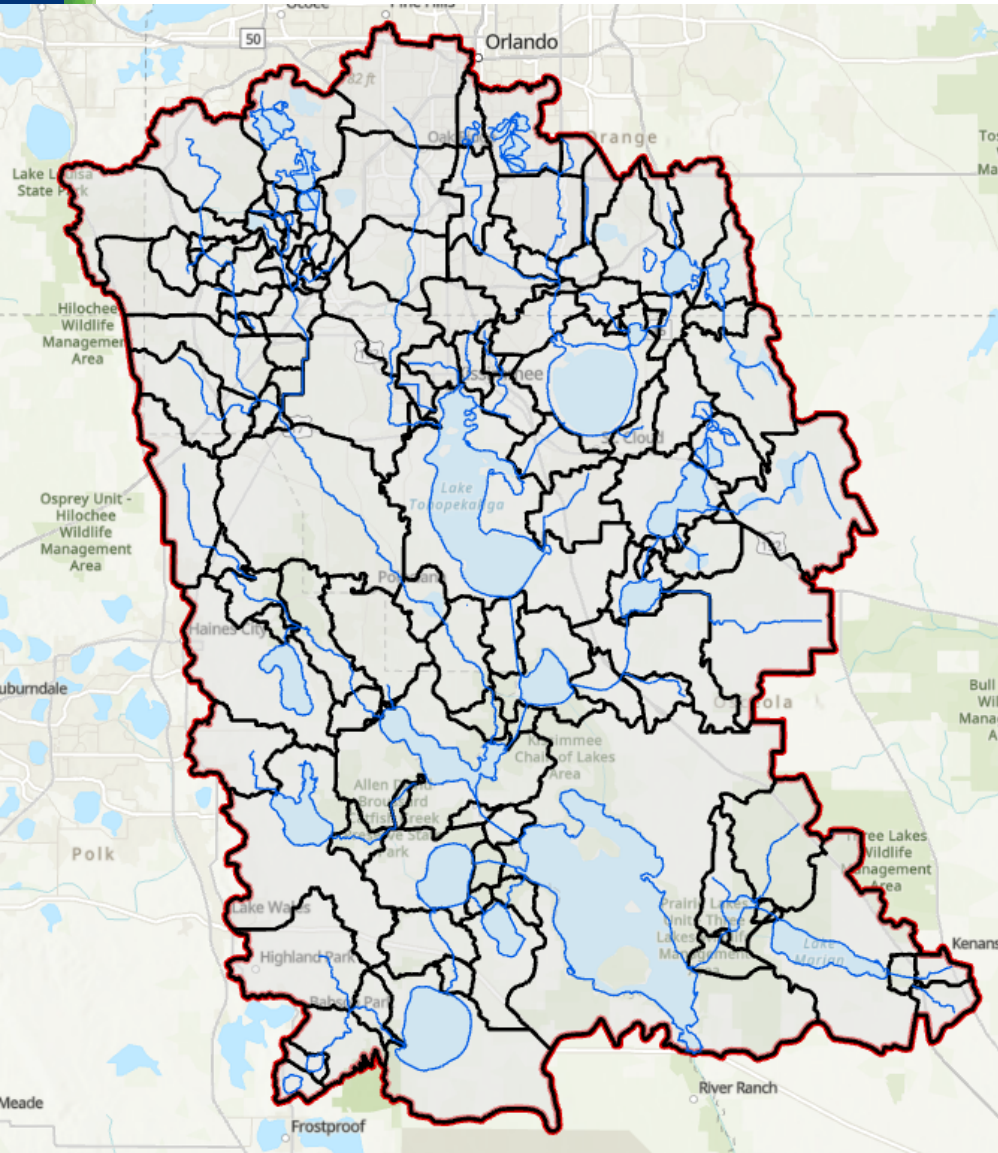
Data Inventory

- Gathered available data from 2008 through 2023 (2008 for model spin up).
 - Same period of record used in the Caloosahatchee River and Estuary and St. Lucie River and Estuary HSPF models.
- Data included:
 - Land use cover.
 - Agricultural irrigation.
 - National Pollutant Discharge Elimination System (NPDES) and reuse facilities.
 - Septic systems.
 - Weather.
 - Wet and dry atmospheric deposition loading.
 - Water quality and flow.
- Incorporated stakeholder input from review of data memo.

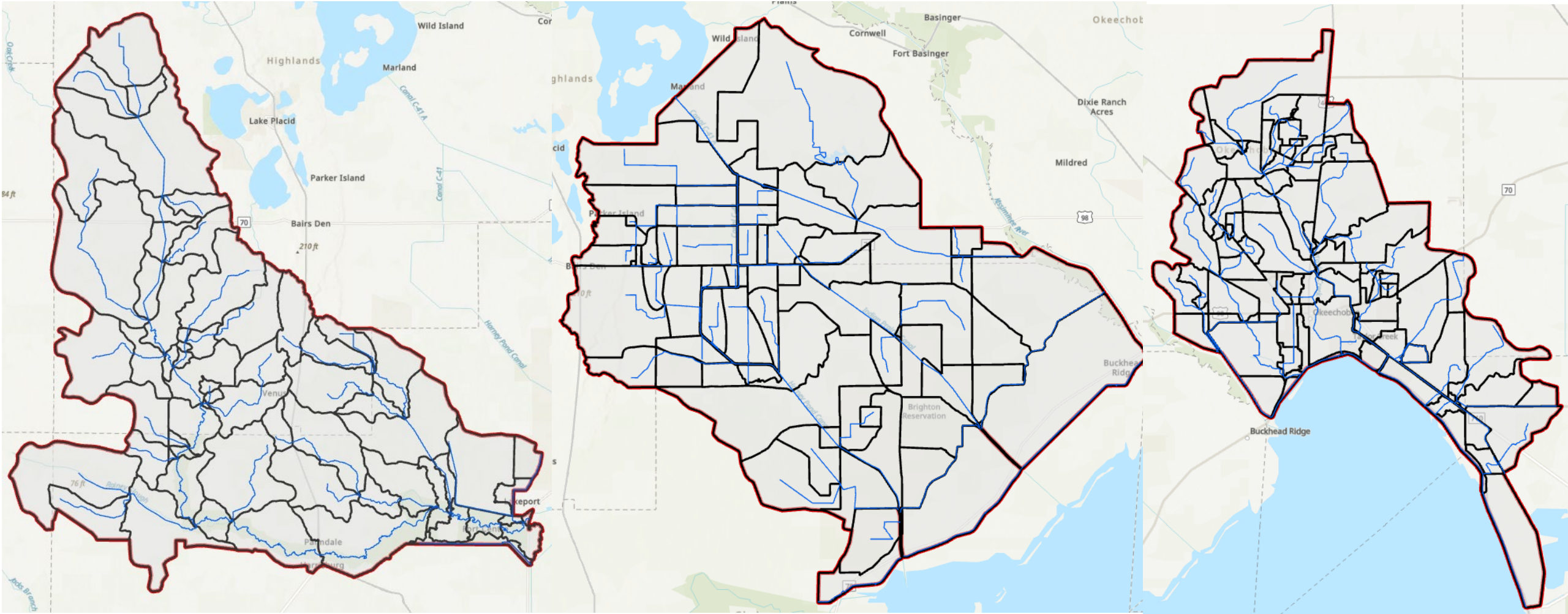
HSPF Model Setup

- Preparing 9 models – one for each subwatershed – using the latest information from the South Florida Water Management District (SFWMD).
- Each subwatershed was further subdivided into basins to provide appropriate hydrologic connectivity and delineate around monitoring stations for calibration and validation.
- The subbasins were based on:
 - Impaired Waters Rule (IWR) Run 66 waterbody identification number (WIBD) boundaries.
 - National Hydrography Dataset (NHD) boundaries.
 - Hydrology and water quality monitoring station coverages.

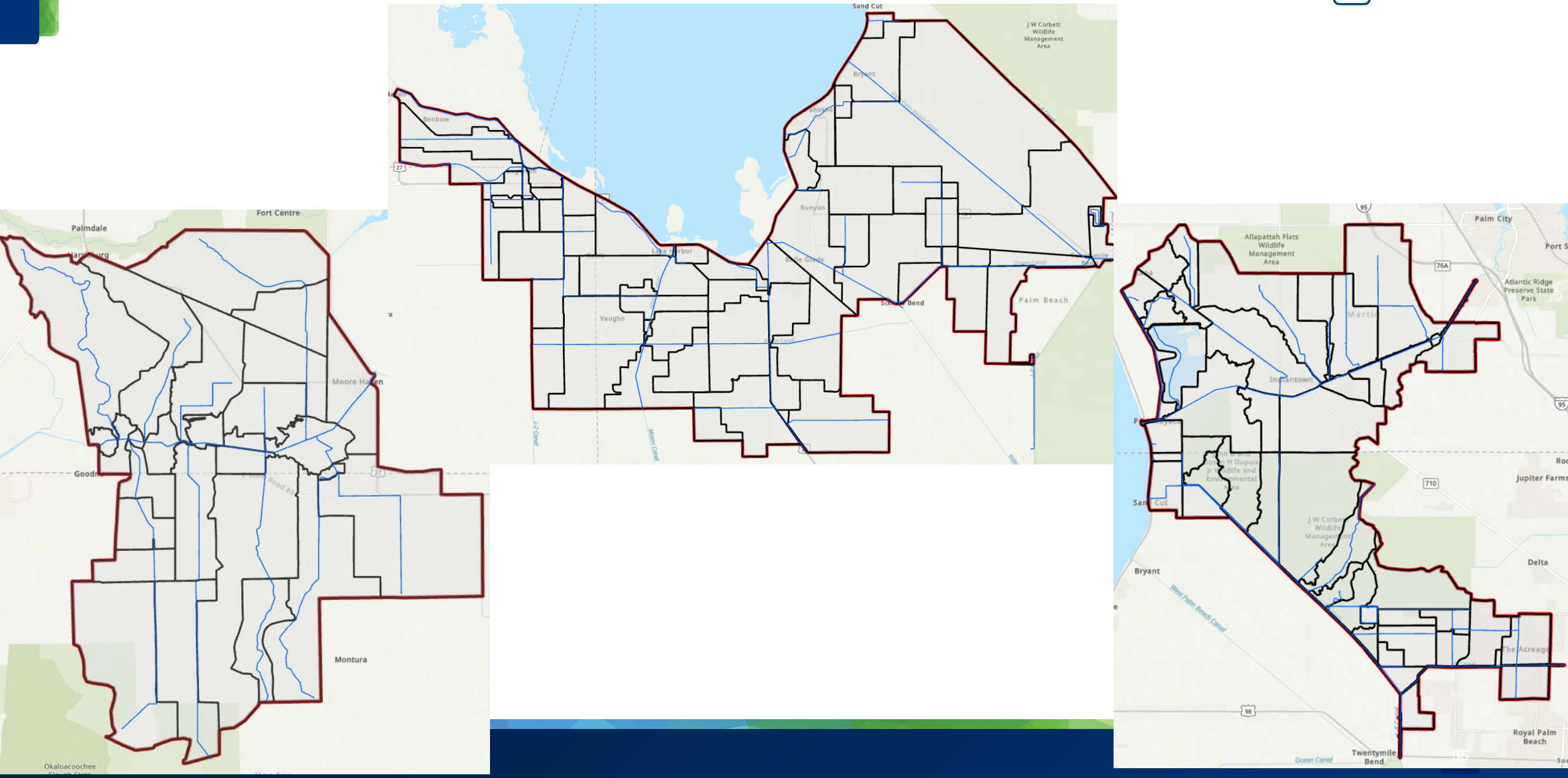
Upper Kissimmee, Lower Kissimmee, Lake Istokpoga



Fisheating Creek, Indian Prairie, Taylor Creek/Nubbin Slough



West, South, and East Lake Okeechobee

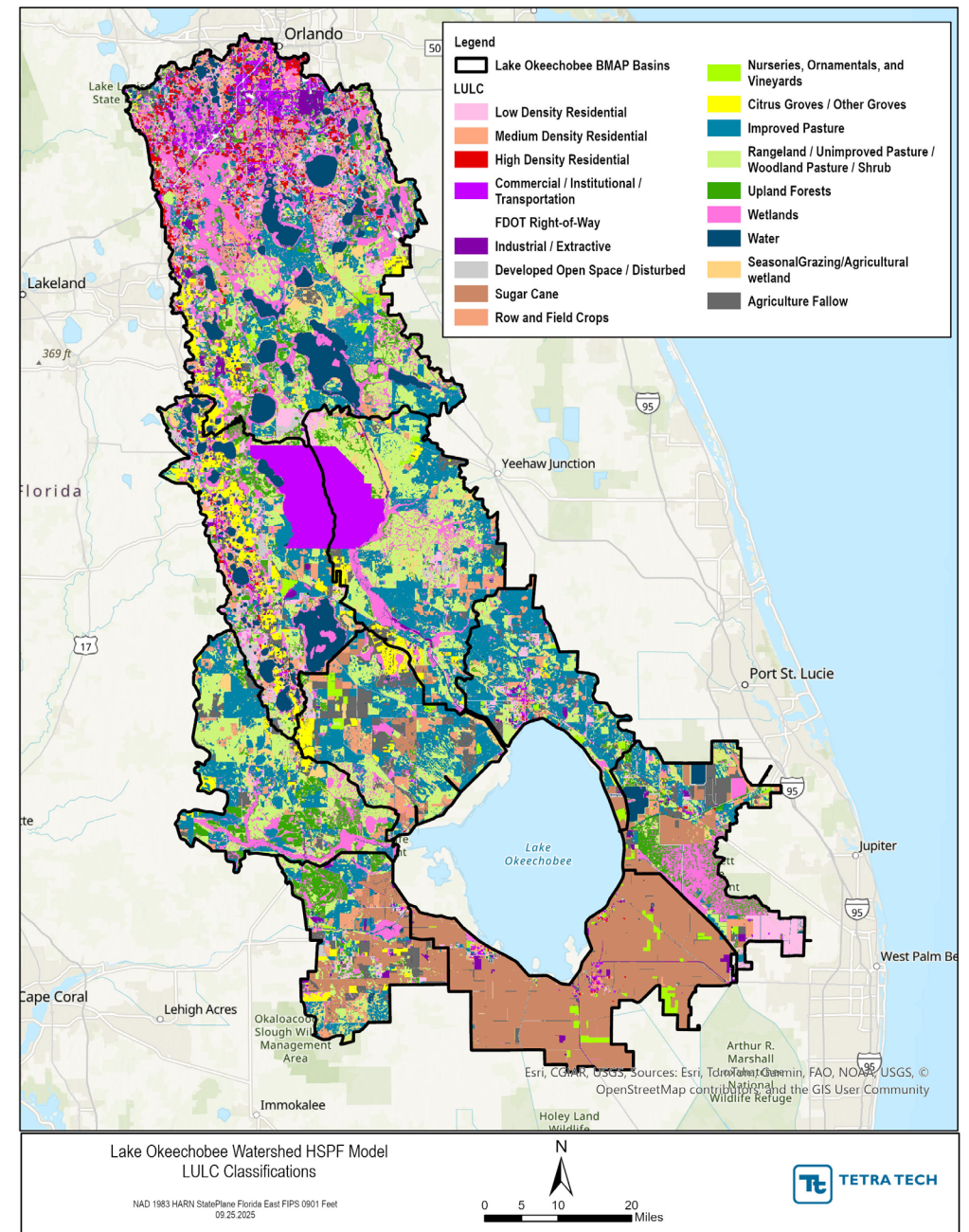


Land Use

- Combination of:
 - 2020–2023 DEP Statewide Land Use Land Cover.
 - 2023 National Land Cover Dataset (NLCD) impervious cover.
 - FDACS Florida Statewide Agricultural Irrigation Demand (FSAID) 12.
 - Florida Department of Transportation (FDOT) roads and rights-of-way.
- Rolled up to 18 land use categories in the HSPF model.
- For regional projects updated land use to:
 - Water for storage projects.
 - Wetland for water quality treatment projects.

Land Use Classifications

Numeric Land Use Code	Numeric Land Use Code Description
1	Low Density Residential
2	Medium Density Residential
3	High Density Residential
4	Commercial / Institutional / Transportation
6	Industrial / Extractive
7	Developed Open Space / Disturbed
8	Sugar Cane
9	Row and Field Crops
10	Nurseries, Ornamentals, and Vineyards
11	Citrus Groves / Other Groves
12	Improved Pasture
13	Rangeland / Unimproved Pasture / Woodland Pasture / Shrub
14	Upland Forests
15	Wetlands
16	Water
17	Agricultural Wetland
18	Agriculture Fallow

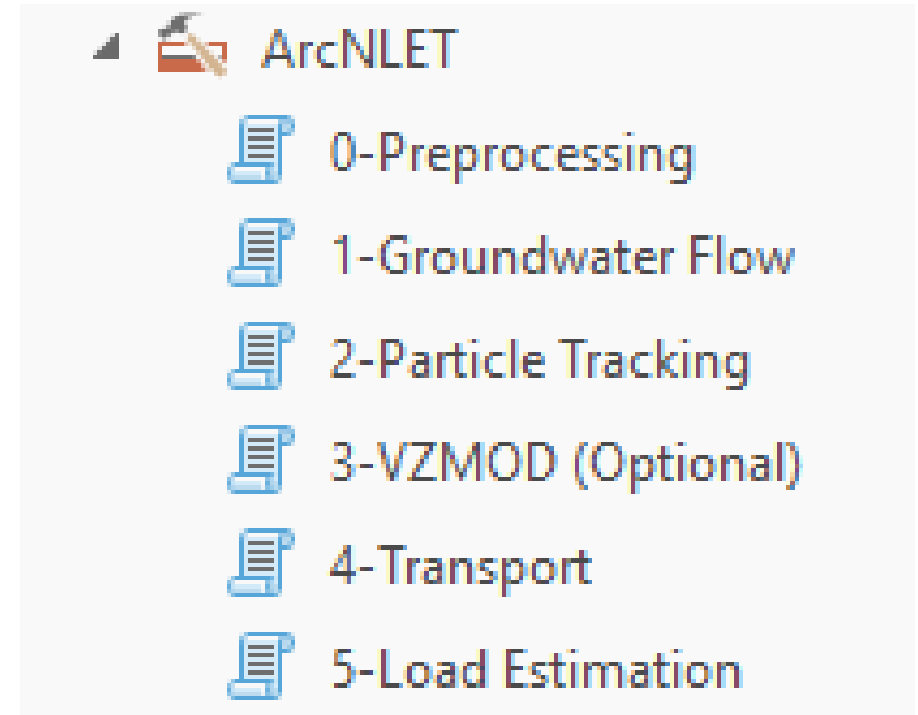


Regional Projects

- Use data on flows into and out of (where applicable) each project.
- Regional projects that will be represented in the model:
 - Buck Island Ranch.
 - Brighton Valley.
 - West Waterhole.
 - Dixie Ranch.
 - Lakeside Ranch Stormwater Treatment Area (STA).
 - Nubbin Slough/New Palm STA.
 - Taylor Creek STA.
 - Lemkin Creek Hybrid Wetland Treatment Technology (HWTT).
 - Wolff Ditch HWTT.
 - Grassy Island HWTT.
 - Mosquito Creek HWTT.
 - Nubbin Slough HWTT.
 - Eagle Haven Ranch.
 - Partin Family Ranch Big Bend.
 - El Maximo Ranch.
 - XL Ranch.
 - Fisheating Creek Floating Aquatic Vegetation Tilling (FAVT).
 - C-44 Reservoir and STA.
 - Caulkins Water Farm.
 - Nicodemus Slough.

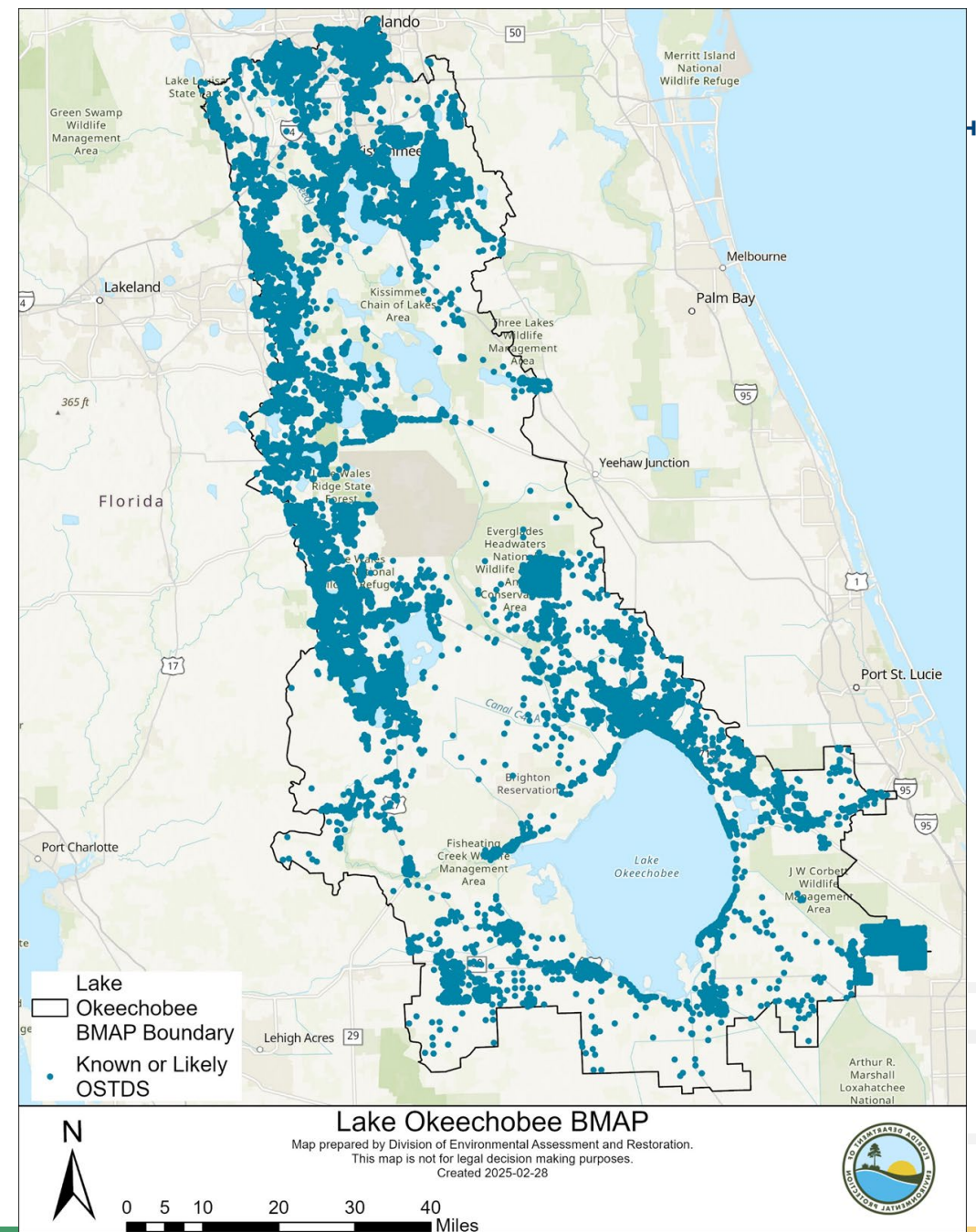
Septic Systems Representation

- HSPF Model uses ArcNLET model to add septic system loads.
 - Added as point source input to each reach.
 - Consistent with BMAP crediting approach and provides tool for stakeholders.
- Used latest ArcNLET-Py model.
 - Simplified model of nitrogen and phosphorus transformation and transport.



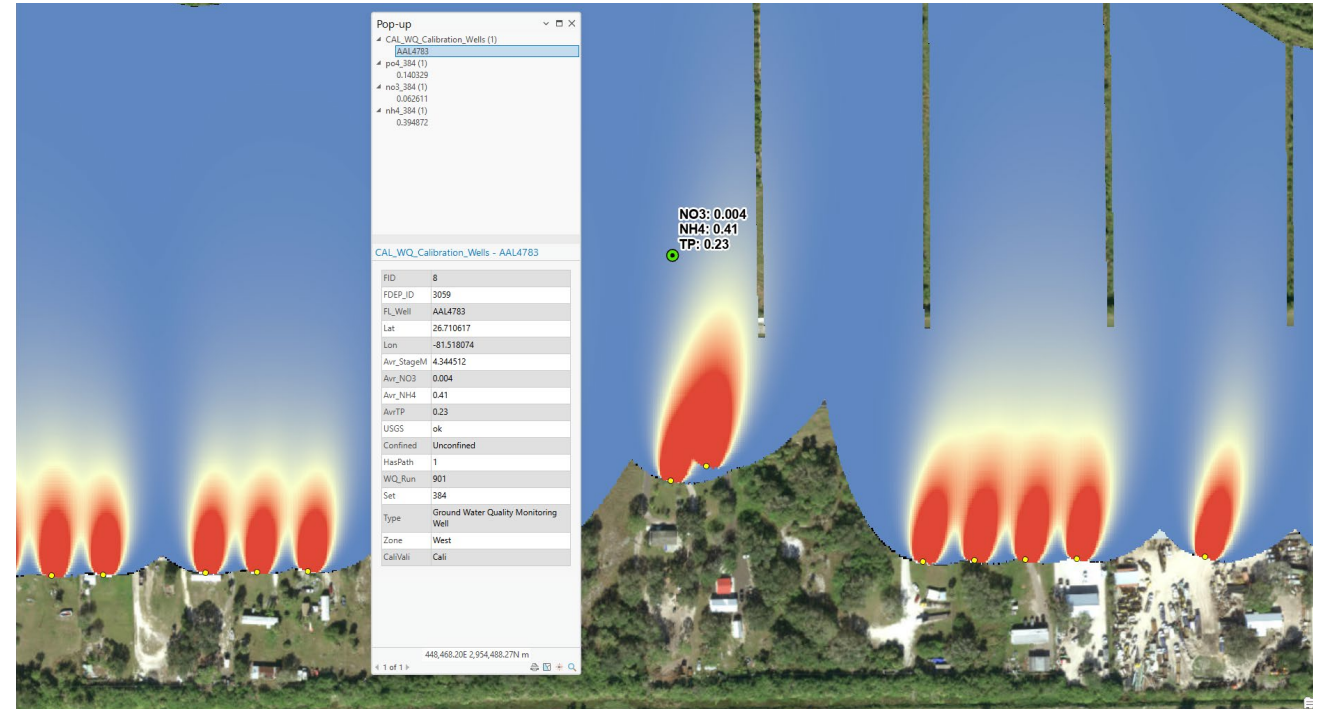
ArcNLET Data

- Used latest FDOH Florida Water Management Inventory septic system coverage.
 - Posted in late 2024.
 - 122,302 septic systems in the watershed.
- Elevation.
- Soil properties for hydraulic conductivity, porosity, texture, and spatial distribution.
- Waterbodies.
- Groundwater well data for water level, nitrogen and phosphorus concentrations.



ArcNLET Components

- Groundwater flow: simplified flow model using smoothed topography to approximate water table.
- Particle Tracking: calculate flow paths based on velocity direction and magnitude.
- Transport: simulate the movement of ammonia, nitrate, and phosphate plumes.
- Load Estimation and HSPF integration:
 - Calculate mass load input, output, and removal.
 - Assign each septic system to a HSPF model reach and summarize the loads.
- Create a summary spreadsheet with individual parcel information.



Remaining Tasks

- Complete the hydrology calibration and prepare memo.
 - End of 2026.
- Complete the ArcNLET model, memo and shapefile.
 - Summer 2026.
- Calibrate the model for water quality and prepare memo.
 - Spring 2027.
- Prepare the HSPF Model report and share for stakeholder review.
 - Summer 2027.
- Update LET using latest model results.
 - Fall 2027.
- Model completed by end of 2027.

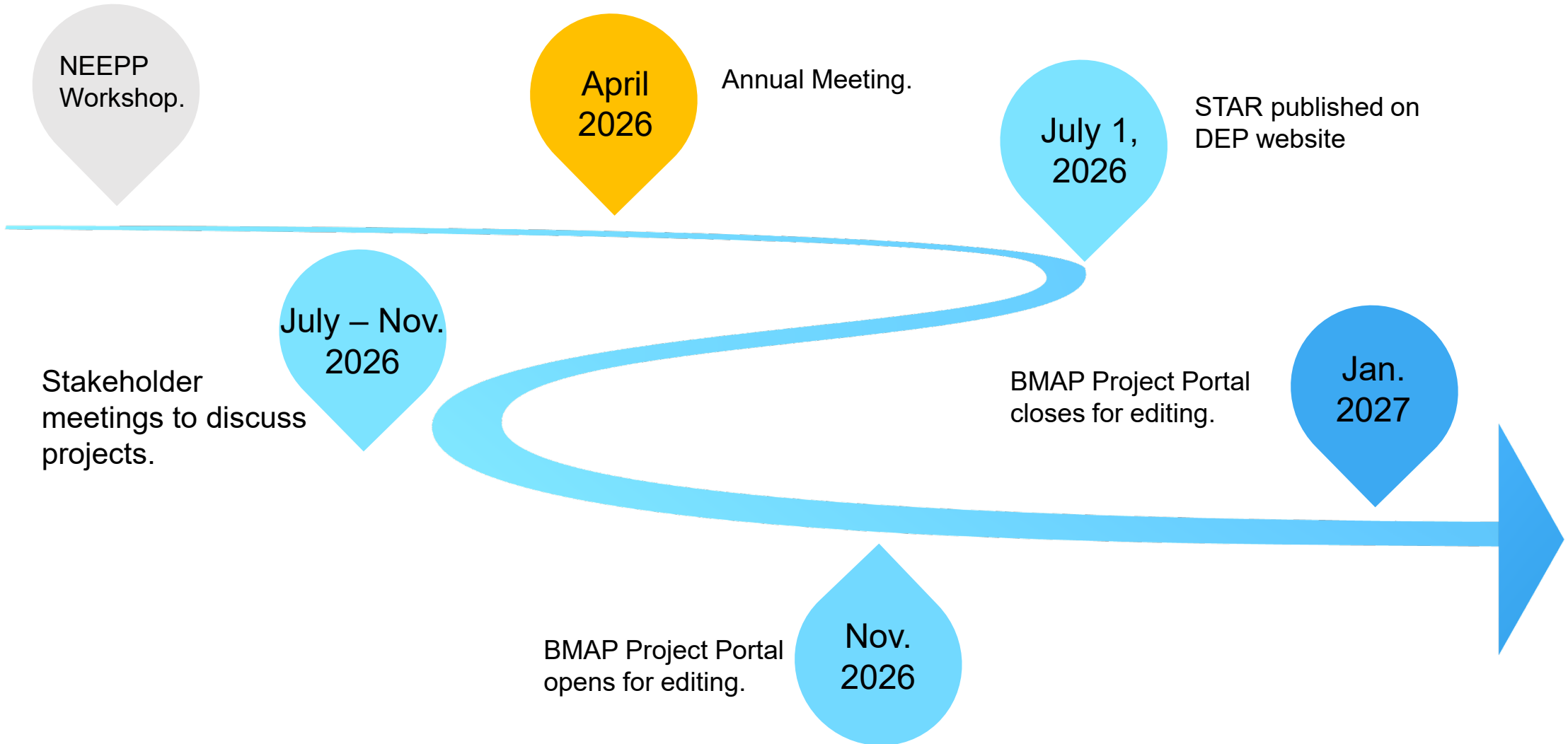


Questions?





LOOKING AHEAD





RESOURCES FUNDING OPPORTUNITIES



Florida Department of Environmental Protection
Funding Opportunities
[FloridaDEP.gov/Funding](https://www.floridadep.gov/Funding)





RESOURCES

BMAP WEBSITE AND STORYMAPS

Basin Management Action Plans (BMAPs)

[Home](#) » [Divisions](#) » [Division of Environmental Assessment and Restoration](#) » [Water Quality Restoration Program](#) » Basin Management Action Plans (BMAPs)

Water Quality Restoration Program Quick Links

[Basin Management Action Plans \(BMAPs\)](#)

[Statewide Annual Report](#)

[Water Quality Grant Opportunities 2024-25](#)

[BMAP Public Meetings](#)

[Impaired Waters, TMDLs and Basin Management Action Plans Interactive Map](#)

[Tools and Guidance for Calculating Total Nitrogen \(TN\) and Total Phosphorus \(TP\) Reductions](#)

[Florida Water Quality Credit Trading](#)

What is a Basin Management Action Plan?

A BMAP is a framework for water quality restoration that contains a comprehensive set of solutions to achieve the pollutant reductions established by a TMDL. Examples include permit limits on regulated facilities, urban and agricultural best management practices, wastewater and stormwater infrastructure, regional projects and conservation programs designed to achieve pollutant reductions established by a TMDL. A BMAP is developed with local stakeholders and relies on local input and commitment for successful implementation. BMAPs are adopted by Secretarial Order and are legally enforceable. BMAPs use an adaptive management approach that allows for incremental load reductions through the implementation of projects and management strategies, while simultaneously monitoring and conducting studies to better understand the water quality and hydrologic dynamics. Progress is tracked by assessing project implementation and water quality analyses. DEP continues to work with local and regional partners to identify additional projects necessary to meet reduction milestones to achieve the TMDLs and inform funding priorities.

What's New: Upcoming Meetings and BMAP Progress

July 1, 2025 BMAP Update Progress

As required by the Clean Waterways Act, DEP must prepare updates to its nutrient BMAPs by July 1, 2025. The [July 1, 2025 BMAP Update Progress](#) dashboard provides a visual representation of progress towards the completion of each of the required tasks and related sub-tasks leading up to the July 1, 2025 updates. Please visit the [BMAP Public Meeting Calendar](#) to find out about upcoming meetings and subscribe to meeting notices.

NEEPP BMAPs



The Northern Everglades watersheds include the Lake Okeechobee watershed and the Caloosahatchee and St. Lucie River watersheds and estuaries.

[Basin Management Action Plans \(BMAPs\) | Florida Department of Environmental Protection](#)



SUBSCRIBER PAGE

HOW TO CONTACT US



BMAPPprogram@FloridaDEP.gov

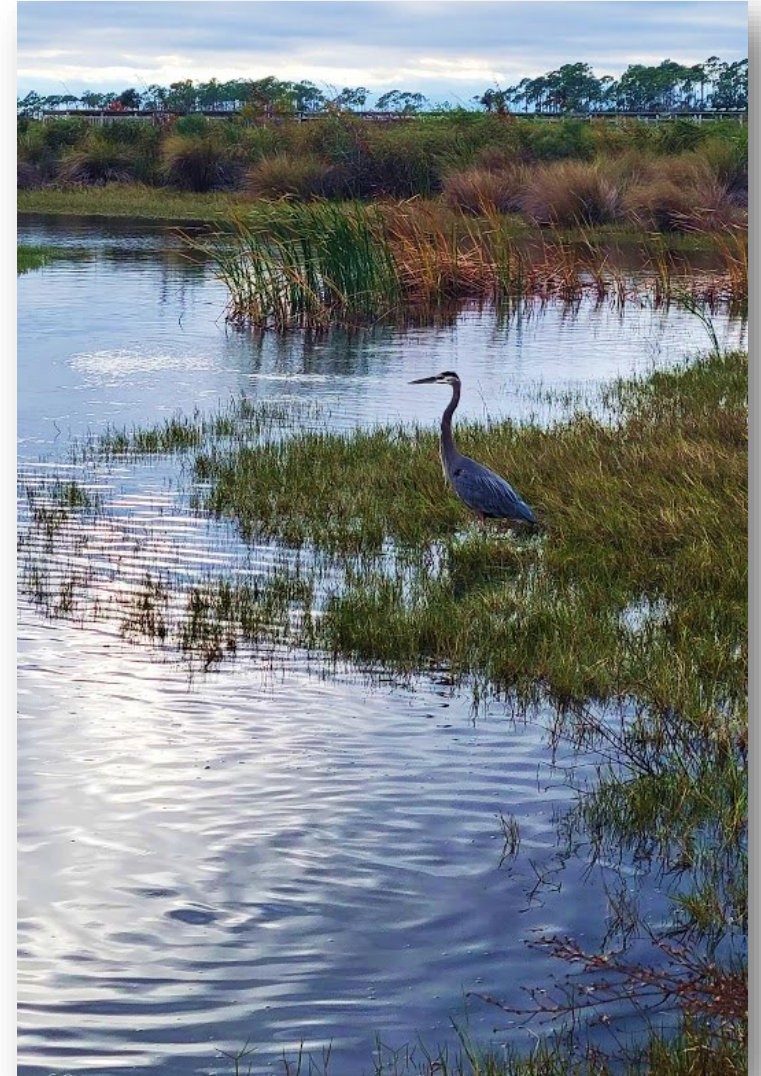


QUESTION BREAK

Questions

Please use the Question panel to submit questions.

Submit written comments concerning today's meeting to:
Chandler.B.Keenan@FloridaDEP.gov.





THANK YOU

Chandler Keenan

Contact Information:

Phone: 850-245-8555

Email: Chandler.B.Keenan@FloridaDEP.gov

Division of Environmental Assessment and Restoration
Florida Department of Environmental Protection

Lake Okeechobee Basin Management Action Plan (BMAP) Annual Meeting
Webinar Summary
Wednesday, April 29, 2026
1:00 pm – 2:26 pm

Participants

Santiago Acevedo, SFWMD	Marcy Frick, Tetra Tech
Nael Altrui, City of Kissimmee	Joe Gilio, Lake O Restore
Miranda Anderson, DEP	Susan Gosselin, Osceola County
Cora Aossey, DEP	McKee Gray, Audubon
Tammy Ash, Conservancy of SW FL	Kathleen Greenberg, Citizen
Marc Aveni, Martin County	Sharon Guaderrama, SJRWMD
Christian Avila, SFWMD	Daniel Hammond, Applied Ecology
Taufiqul Aziz, DEP	Kira Hansen, Kimley Horn
Suzanne Baird, ECT	Maddy Hart, FDACS
Bill Baker, MacVicar Consulting	Kenny Hayman, DEP
Lisa Bally, Geosyntec	Margarita Hernandez, DEP
Maurice Barker, DEP	Ray Hodge, United Dairy Farmers
Ernie Barnett, FL Water & Land	Ruth Holmes, City of Stuart
Terrie Bates, Citizen	Moira Homann, DEP
Evelyn Becerra, DEP	Natalie Howard, FWC
Steve Buczynski, Citizen	Laila Hudda, EPA
Rich Budell, Budell Water Group	Mallie Hunt, DEP
Patricia Burke, SFWMD	Danielle Ivey, Audubon
Ed Cambeiro, DEP	Christopher Johns, LLW
Trevor Campbell, AECOM	Manohardeep Josan, SFWMD
Diana Christopher, DEP	Chandler Keenan, DEP
Susan Cooper, Citizen	Elizabeth Kelly, Martin County
Sophie Coppage, DEP	Steven Kelly, FDOT
Anthony Cotter, Toho Water	Brianne Kenny, Troon
Derek Cox, SFWMD	Claudia Kiraly, Citizen
Kevin Coyne, AMP	Greg Knothe, Polk County
Patricia Cruz, Orange County	Natalie Kraft, FPL
Sean Dallas, Oversight District	Lisa Kreiger, Lee County
Briston De Armas, FDOT	Julianne LaRock, SFWMD
Letuzia De Oliveira, FDACS	Sarah Laboda, Apex
Fernando Diaz, Gunster	Kari Lara-Murabito, City of Orlando
Pamela Dugan, Eutrophix	Mitchell Latzman, Friends of the Everglades
Amanda Dyer, DEP	Emily Lawson, Orange County
Amy Eason, Martin County	Heather Lindell, Orange County
Kristina Embrey, FGUA	Celeste Lyon, RES
Katherine English, Pavese Law	Daniel Magro, Aculus Engineering
Pamela Fentress, Lost Lake Groves	Nicolle Masters, SFWMD
Jessica Ferris, FDACS	Sherry McCorkle, SFWMD
Phil Flood, SFWMD	Amanda McDonald, SFWMD
David Flores, DEP	Jessica McPherson, Apex
Jake Fojtik, FFBF	Brian Megic, Liquid Solutions Group

Sarah Menz, DEP
Tamara Miller, RES
Jon Moore, DEP
Charles Murphy, Glades Media
Stephanie Nevadunsky, SFWMD
Caitlin Newcamp, Audubon
Alejandra Nirenberg, CRI
Stacey Ollis, SFWMD
Sara Ouly, SFWMD
Mark Perry, Florida Oceanographic
Luna Phillips, Gunster
Libby Pigman, SFWMD
Jason Pim, Sharkinetics
Nicolas Pisarello, ATM
Irene Quincey, Pavese Law
Dawn Ritter, Highlands County
Olivia Rockett, Drummond Carpenter
Rhonda Roff, Citizen
Ellen Rogers, Florida Senate

Mikayla Rogers, FFVA
Matthew Scriptor, Ecological Associates
Larry Scrabis, Citizen
Shimelis Setegn, SFWMD
Mailin Sotolongo-Lopez, DEP
Vanessa Stephen, US Sugar
Brynee Te, FDACS
The Florida Channel
Jennifer Thera, FDACS
Matthew Thompson, Oversight District
Todd Thurlow, Thurlow & Thurlow
Tony Tomalewski, DEP
Jordan Varble, Apex
Rachel Vitek, RES
Youchao Wang, SFWMD
Alan Wertepny, Mock Roos
Joseph Whyte, RES
Jesse Winberg, Orange County

The full webinar recording and supporting materials are posted to the Florida Department of Environmental Protection (DEP) website at: <https://floridadep.gov/dear/water-quality-restoration/content/bmap-documents-meeting-materials-and-recordings>.

Questions and Answers

Question: Did all the "Responsible entities" submit their list of credible projects with estimated reductions which demonstrate how the entity is going to help meet their subwatershed milestone by January 14th? Who did not, and what would be the "DEP enforcement"?

Answer (DEP): This BMAP is a little different than the other Northern Everglades BMAPs. There are no entity-specific milestones. This BMAP has subwatershed-specific milestones where all stakeholders in a subwatershed are working towards that milestone together. The January 14 deadline was the Statewide Annual Report deadline. DEP is finishing the process of reviewing the submitted information and verifying reductions, and will then have meetings with stakeholders who are not implementing projects and making progress towards improving water quality. The conversation is a little different than BMAPs where there are entity assigned allocations but the follow up actions will happen to get stakeholder participation and projects.

Question: I heard that DEP/Florida Department of Health (DOH) was going to start requiring upgrades of existing septic systems in order to obtain a repair or modification permit in 2030 (similar to what is effective in Wekiwa Springs Priority Focus Area [PFA] now). Are you aware of how this will be implemented and for what areas: All BMAPs? Nutrient BMAPs? PFA areas?

Answer (DEP): There are different septic system requirements around the state. The only place with a 2030 deadline is the Indian River Lagoon. There is a statewide requirement for no new septic systems on certain lot sizes. The septic system requirement discussed earlier for Lake Okeechobee was connection to central sewer when it becomes available. However, this would not apply to all septic systems that come in for repair permits.

Question: What is the timeline for the C63 aquifer storage and recovery (ASR) test well operation?

Answer (South Florida Water Management District [SFWMD]): For clarification, we do not have a C63 ASR cluster site as part of the Lake Okeechobee ASR work. As mentioned during the SFWMD presentation, the first set of test wells at three ASR cluster locations (C-38N, C-38S, and L-63N) were completed in early 2025, and two additional test wells at C-38S are now under way. These locations will not be operating as ASR wells until treatment is designed and constructed. Cycle testing and operating the test wells as ASR wells are estimated as 5 to 10 years from now.

Question: What is total phosphorus (TP) load into Lake Okeechobee for 2024 and 2025?

Answer (DEP): The South Florida Environmental Report (SFER) has that information and SFWMD had a link to the SFER in their presentation.

Question: Are there any plans to increase restoration of the C-37 back to Kissimmee River floodplains.

Answer (SFWMD): As C-37 is a long distance upstream of the Kissimmee River Restoration (KRR) project area floodplain, there are no plans and it is likely not feasible to connect it to the KRR floodplain. Note that C-38 is also not planned for further backfilling and restoration than has already been completed.

Question: How do you compare the 2026 SFER SFWMD data showing total loads of TP at 371.2 tons per year (t/yr) and 182 parts per billion (ppb) to estimated load reductions?

Answer (DEP): DEP is in the process of updating the BMAP model with more recent data to compare to more recent conditions. There will be a future BMAP update to reflect the revised loading estimates.

Question: Will the new Tetra Tech model include seepage of groundwater into Lake Okeechobee for volume, TP, and total nitrogen (TN)?

Answer (DEP): The model is focused on the watershed and is not explicitly modeling the lake. The model does include groundwater baseflow contributions so we will be looking at both surface water and groundwater contributions from the watershed.

Question: How do we get on the email list for things like the data memo(s) for Lake Okeechobee and Caloosahatchee?

Answer (DEP): Please contact your BMAP coordinator or subscribe here:
<https://floridadep.gov/dear/dear/content/subscribe#BMAP>.

Question: The target is expressed as a concentration (40 ppb) but also expressed as a load (105 t). These are two variables of a three variable equation with flow being the third. How can the 2025 modeling change the assumed flow without the other two variables changing?

Answer (DEP): The total maximum daily load (TMDL) allowable load of 105 metric tons per year (mt/yr) to the lake will stay the same. What we are doing is updating the model to estimate the most current, through 2023, loads. That difference between the current loads and the 105 mt/yr will be the new required reductions. The models are meant to look at long-term data. The output will be a load estimation tool (LET) that can be used for allocation scenarios and longer term planning. Flows and concentrations can change from a variety of factors, including rainfall for that year. Information on those annual changes are available through the SFER and other data analysis that DEP provides. For the modeling, it is important to have a baseline for stakeholders to start planning so the variables are not changing every year.

Question: Did an email go out with documents to review for the Hydrological Simulation Program – Fortran (HSPF) model similar to the St. Lucie? If so, do they have the same deadline for next week?

Answer (DEP): There are no memos out for review now for Lake Okeechobee. The data memo went out in December and comments were due back in January. It will be later this summer/early fall before the Lake Okeechobee HSPF hydrology memo will be ready for review.

Question: Where can the data memo and future memos for hydrology calibration and ArcGIS Nutrient Load Estimation Tool (ArcNLET) be accessed?

Answer (DEP): DEP is in the process of setting up a new file storage system, but links will be sent to where information is posted.

Question: Why are septic systems treated as a point source? My understanding is that they are treated as a nonpoint source for regulation. Are we going to have a data disconnect here?

Answer (DEP): Septic systems are a nonpoint source and they are being modeled that way in ArcNLET. ArcNLET evaluates how much of the nutrient load makes it to a waterbody. We are then taking it from the waterbody point in ArcNLET and adding it to HSPF at the waterbody. That load then continues through any uptake as it travels to the lake.

Question: Will this tool have a publicly usable interface to view land use, load reductions/contributions, etc.?

Answer (DEP): Yes. This is the LET, which is a GIS coverage that pairs the land use with the nitrogen and phosphorus loads per acre and the septic system loads. It is a way to look at the model results without having to run the HSPF model each time. This is used in the BMAP to estimate the benefits of projects and assign allocations.

Question: Does water move out to the east and west?

Answer (DEP): The model simulates land use loads to a waterbody following the path through the waterbodies to the lake. If water moves east or west in the watershed, the model will simulate that. There are separate models for the Caloosahatchee and St. Lucie watersheds, which reflect flows east and west respective of Lake Okeechobee.

Question: How much adjusting of models have you done to accommodate climate anomalies?

Answer (DEP): We are just starting model calibration. The presentation showed some of the weather data that will be aggregated into regions that have similar climate properties to help run the model. We will try to account for different weather patterns in the model setup.

Question: You mentioned that the ArcNLET information would include a GIS file and a table with parcels. I did not notice the table when you did the St. Lucie memo. Will this only be provided for Lake Okeechobee?

Answer (DEP): For St. Lucie, there was a separate GIS shapefile, in addition to the memo, and that will be the same for Lake Okeechobee. The GIS shapefile includes an attribute table.

Question: In St. Lucie, you have a percent flow into St. Lucie. Will you be using the same information for water going into Lake Okeechobee?

Answer (DEP): Any structures with bidirectional flow where sometimes water flows to the estuary or

sometimes it flows back to the lake that will be factored into the Lake Okeechobee model.

Question: Will the HSPF model evaluate the inflow and outflows to the lake (i.e., east, south basins)?

Answer (DEP): Yes. The model will include the inflows and outflows to the lake including from the East, South, and West Lake Okeechobee Subwatersheds.

Question: Will the model be able to estimate the actual contributing loads from these basins which discharge into SFWMD canal systems that may redirect the flow into stormwater treatment areas (STAs) or further south for water supply.

Answer (DEP): The models use available data to estimate the loadings from basins throughout the watershed. Canals are being represented with their physical attributes (i.e., width, depth, volume) and the models are being calibrated to instream flow and water quality. Where information is available, regional projects and irrigation, such as the STAs, are being represented in the model.

Comment: In Table 10, please change pounds per year (lbs/yr) to mt/yr as shown in Table 2. Please make this change throughout all three BMAPs because mt/yr and metric concentrations are what is being monitored and reported by SFWMD in the SFER and everywhere else.

Response (DEP): DEP uses lbs/yr to track the loading across all BMAPs. The Lake Okeechobee BMAP includes some information in mt/yr, as well. If you are interested in seeing the numbers in mt/yr, you can convert the BMAP data.

Comment: It would be helpful if “multiple commodities” were broken down further since it is such a big percentage.

Answer (Florida Department of Agriculture and Consumer Services [FDACS]): We are able to do that but it can result in “double counting” of acreages so we do not present data that way in tabular format for meetings. You can reach out to Jennifer Thera if you want enrolled acreages for each commodity.