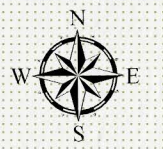


TO OLUSEE/ LAKE CITY

TO SANDERSON/ JACKSONVILLE



OLUSTEE BATTLEFIELD HISTORIC STATE PARK

BAKER COUNTY, FLORIDA







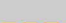


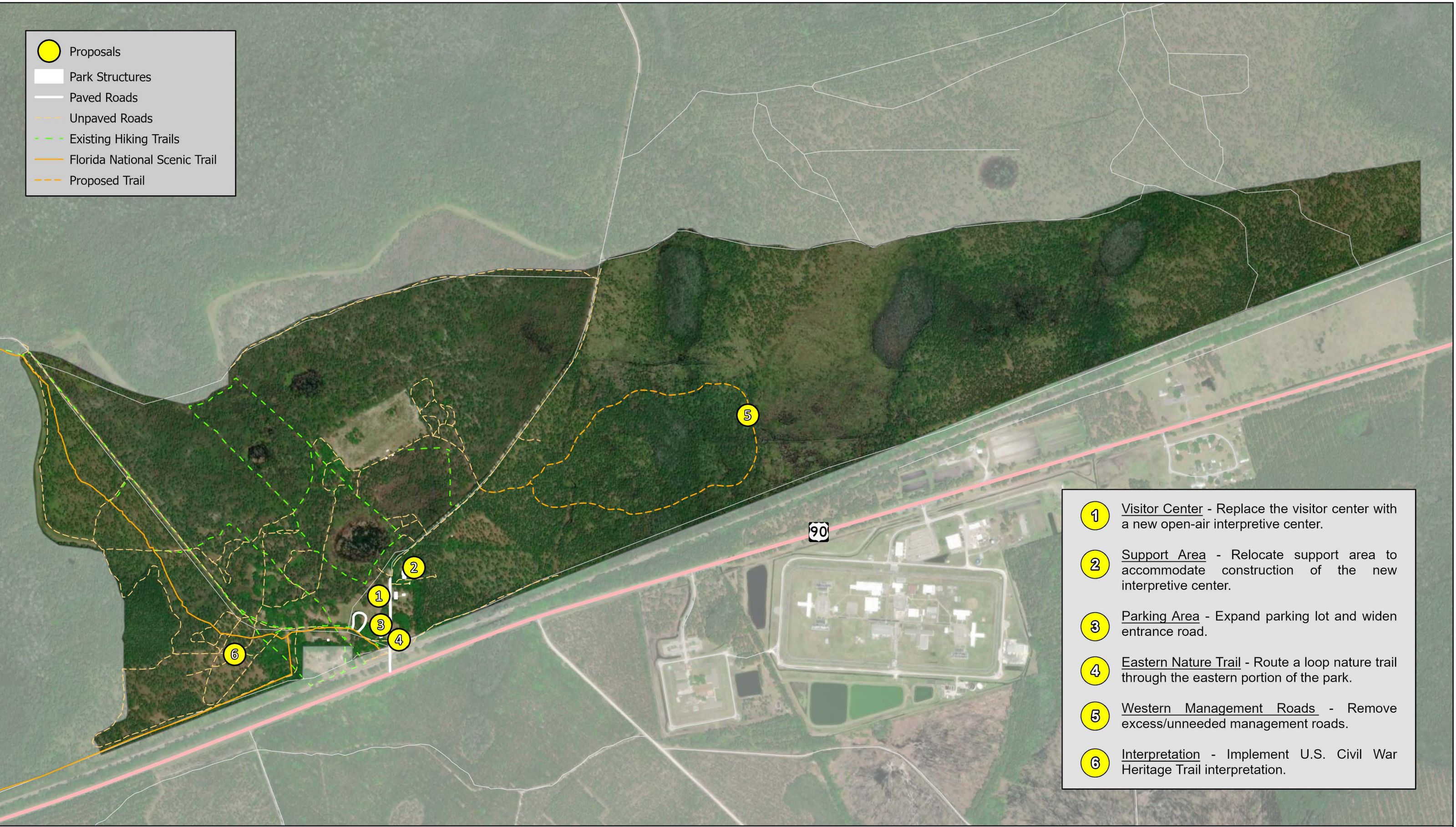
SURROUNDING LAND COVER







- Forests
- Wetlands
- Agriculture
- Silviculture

PARK FEATURES

- Park Boundary
- Structures
- Unpaved Park Roads
- Paved Park Roads
- Florida National Scenic Trail
- Hiking Trails
- Railway

-  Proposals
-  Park Structures
-  Paved Roads
-  Unpaved Roads
-  Existing Hiking Trails
-  Florida National Scenic Trail
-  Proposed Trail

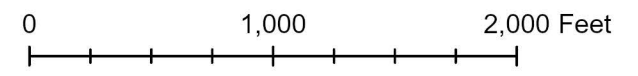


-  Visitor Center - Replace the visitor center with a new open-air interpretive center.
-  Support Area - Relocate support area to accommodate construction of the new interpretive center.
-  Parking Area - Expand parking lot and widen entrance road.
-  Eastern Nature Trail - Route a loop nature trail through the eastern portion of the park.
-  Western Management Roads - Remove excess/unneeded management roads.
-  Interpretation - Implement U.S. Civil War Heritage Trail interpretation.



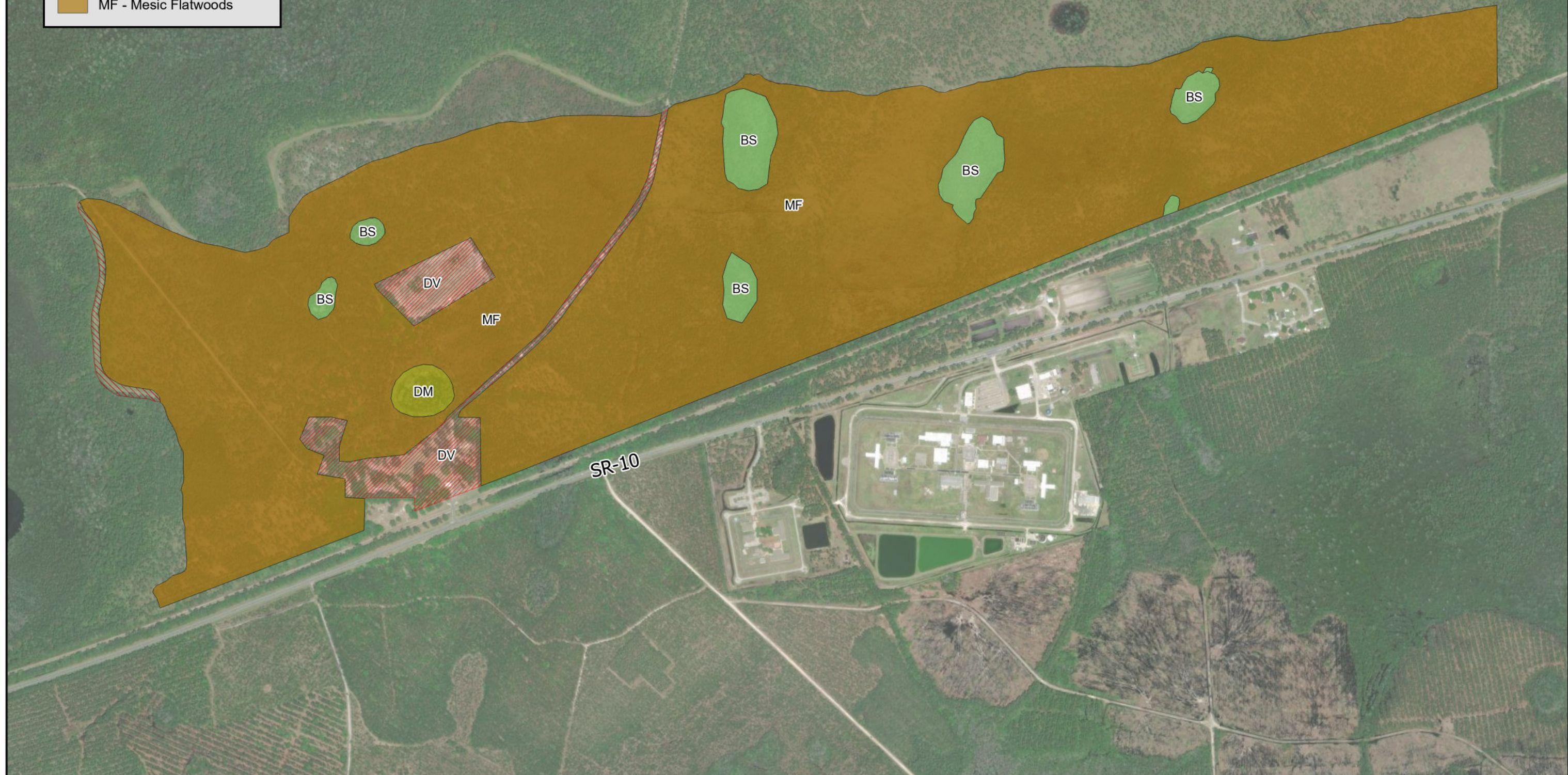
Olustee Battlefield Historic State Park

Conceptual Land Use Plan

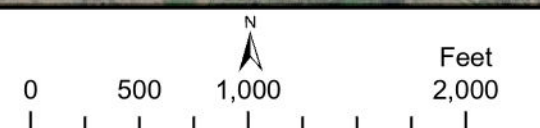


Natural Communities (in Acres)

- BS - Basin Swamp
- CL - Clearing/Regeneration
- DM - Depression Marsh
- DV - Developed
- MF - Mesic Flatwoods



OLUSTEE BATTLEFIELD HISTORIC STATE PARK
 Natural Communities - Existing Conditions



Sources: ESRI; Florida Department of Environmental Protection
 This graphical representation is provided for informational purposes and should not be considered authoritative for navigational, engineering, legal, and other uses.