

FY 2015-16 PRP ENCUMBRANCE ACTIVITY

2015-2016 FISCAL ACTIVITY BY MONTH as of 09-30-2015			
Month	Projection per Month	Total Encumbered Amount (Includes POs, COs, Utilities and Adjustments)	Percentage
July 2015	\$ 10,800,000	\$ 12,077,442	112%
Aug 2015	\$ 12,200,000	\$ 23,062,722	189%
Sept 2015	\$ 19,100,000	\$ 11,785,428	62%
Oct 2015	\$ 20,900,000	\$ -	0%
Nov 2015	\$ 16,100,000	\$ -	0%
Dec 2015	\$ 14,900,000	\$ -	0%
Jan 2016	\$ 10,400,000		0%
Feb 2016	\$ 11,300,000		0%
Mar 2016	\$ 9,600,000		0%
April 2016	\$ 15,000,000		0%
May 2016	\$ 16,200,000		0%
June 2016 (*)	\$ 25,100,000		0%
	\$ 181,600,000	\$ 46,925,592	26%

(*) Includes Infrastructure Contracts

SEPTEMBER 2015 NET RESULTS as of 09-30-2015		
Phase/Activity	Total Number of Projects Funded by PRP	Total Amount Encumbered
Low Score Site Initiative (LSSI)	55	\$ 1,125,175
Site Assessment (LSA or New)	124	\$ 4,038,053
Source Removal (Dig or FPR)	6	\$ 424,240
RAP (or Mod or PT)	23	\$ 763,617
RAC	15	\$ 2,527,147
O & M	20	\$ 2,032,359
PARM	16	\$ 492,876
NAM	82	\$ 981,610
Well Abandonment/SRCO	22	\$ 240,610
Totals	363	\$ 12,625,688
STCM Change Orders and Adjustments		\$ (1,036,067)
Utilities		\$ 195,807
Grand Total		\$ 11,785,428

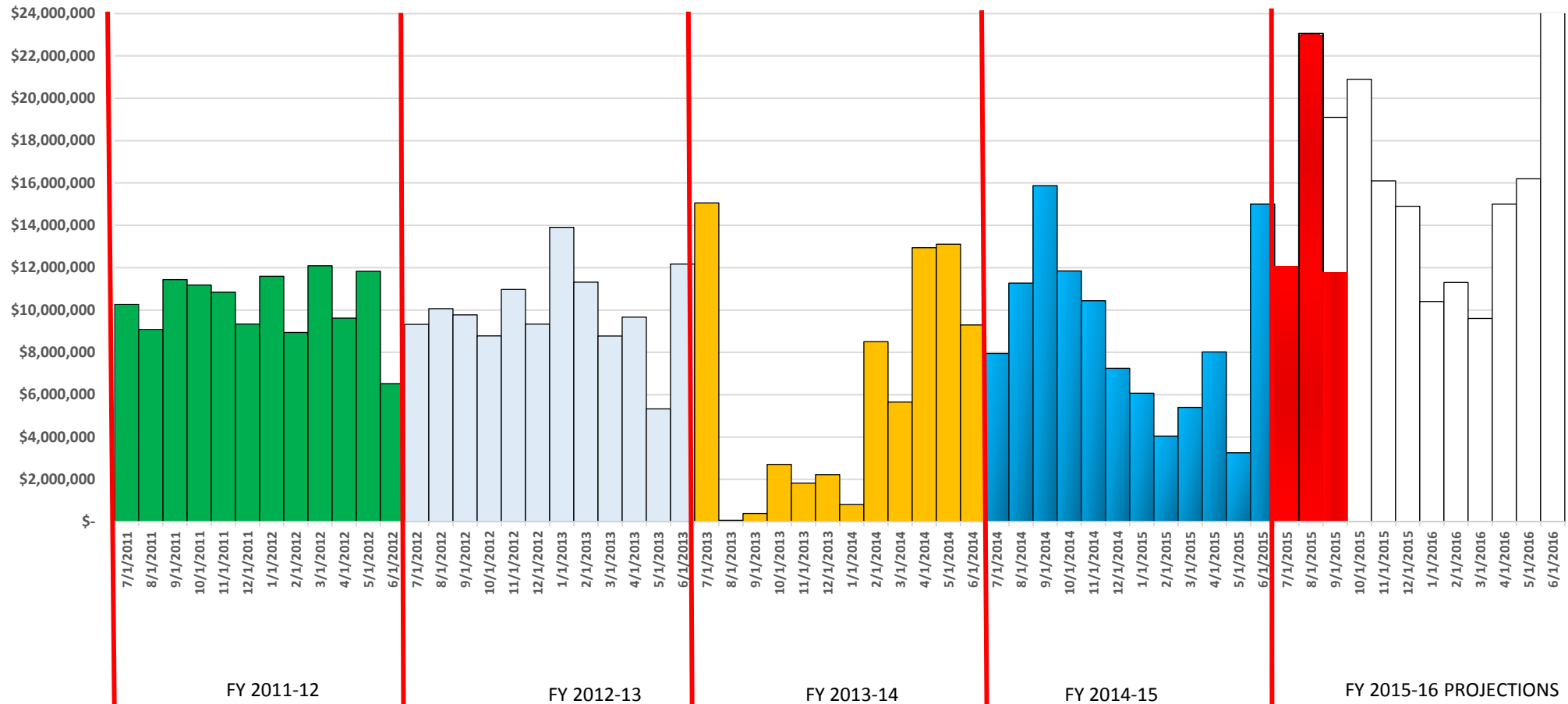
TOTAL ENCUMBERED BY FISCAL YEAR ALLOCATION as of 09-30-2015			
FISCAL YEAR	FCO APPROPRIATION AMOUNT	TOTAL AMOUNT ENCUMBERED	FCO APPROPRIATION BALANCE
FY 2014-15	\$ 110,000,000	\$ 110,000,000	\$ -
FY 2015-16	\$ 125,000,000	\$ -	\$ 125,000,000

FY 2015-16 PRP ENCUMBRANCES BY ACTIVITY

2015-2016 MONTHLY FISCAL ACTIVITY as of 09-30-2015

CLEANUP ACTIVITY	CURRENT AMOUNT ENCUMBERED	CURRENT COUNT ENCUMBERED	CURRENT AVERAGE COST FY 2015-16
LOW SCORE SITE INITIATIVE (LSSI)	\$ 3,565,660	175	\$ 20,375
SITE ASSESSMENT (SA)	\$ 8,094,626	240	\$ 33,728
SOURCE REMOVAL (SR)	\$ 8,130,233	39	\$ 208,468
REMEDIAL ACTION PLAN (RAP)	\$ 2,595,472	75	\$ 34,606
REMEDIAL ACTION CONSTRUCTION (RAC)	\$ 3,733,069	28	\$ 133,324
OPERATION & MAINTENANCE (O&M)	\$ 3,668,161	36	\$ 101,893
POST ACTIVE REMEDIAL MONITORING (PARM)	\$ 1,261,425	36	\$ 35,040
NATURAL ATTENUATION MONITORING (NAM)	\$ 2,423,607	189	\$ 12,823
WELL ABANDONMENT (WA)	\$ 536,923	56	\$ 9,588
TOTAL CLEANUP ACTIVITY	\$ 34,009,177	874	
STCM CHANGE ORDERS & ADJUSTMENTS	\$ 12,397,107		
UTILITIES	\$ 519,308		
GRAND TOTAL	\$ 46,925,592		

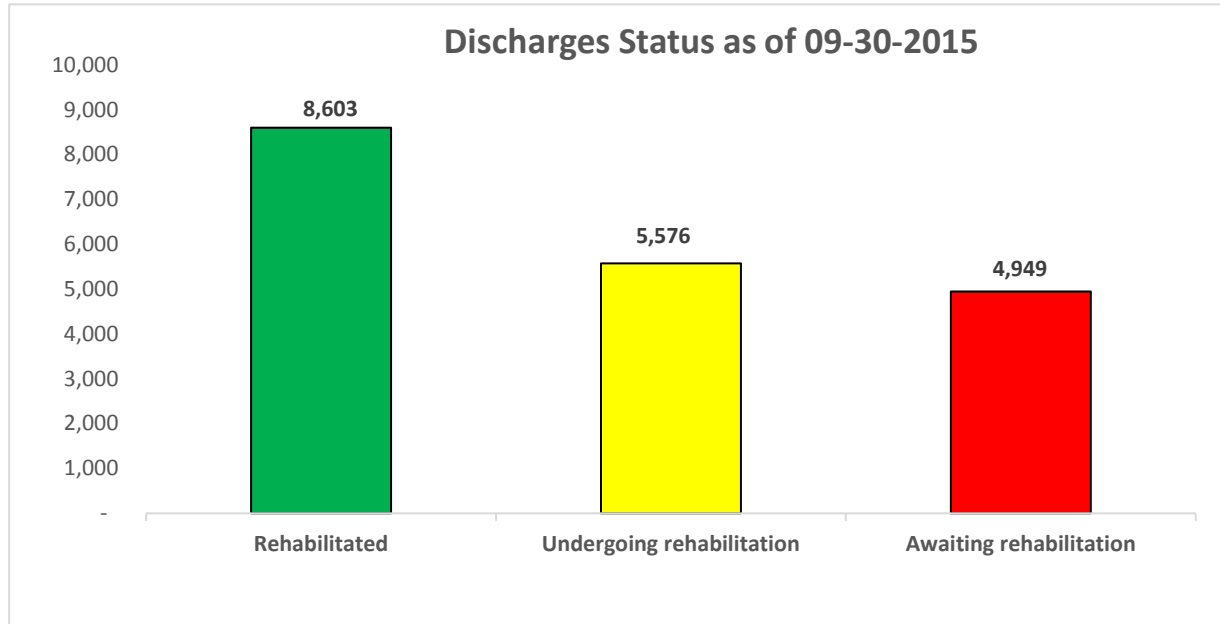
Work Orders (WO) and Task Assignments (TA) Amount Created per Month July 1, 2011 through September 30, 2015 (and Projections through 6-30-2016)



CURRENT ELIGIBLE DISCHARGE STATUS

Eligible Discharge Status as of 09-30-15		
STATUS	COUNT	Percent
Rehabilitated	8,603	45%
Undergoing rehabilitation	5,576	29%
Awaiting rehabilitation	4,949	26%
Funding eligible discharges	19,128	100%

Discharges Awaiting Rehabilitation as of 09-30-15		
Score	Discharges	Percentage
≤ 29	4,813	97.3%
30 – 45	106	2.1%
46 – 74	23	0.5%
≥ 75	7	0.1%
Total	4,949	100.0%

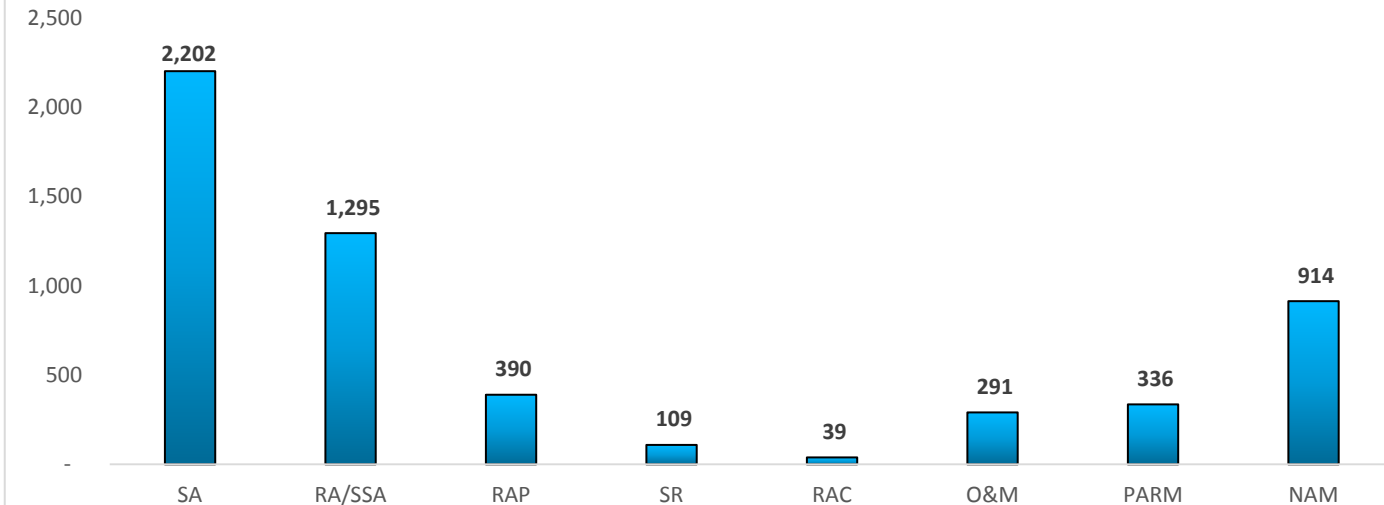


NOTE: THE "CURRENT DISCHARGE STATUS" REPORT IS UPDATED THE END OF EACH MONTH.

CURRENT ELIGIBLE DISCHARGE STATUS

Current Monthly Cleanup Discharge Status by Sub Phase as of 09-30-15									
Score Range	SA	RA/SSA	RAP	SR	RAC	O&M	PARM	NAM	Grand Total
< 29	1,055	447	57	58	7	70	45	75	1,814
30-45	1,019	341	120	18	1	28	26	155	1,708
46-74	103	420	178	33	26	165	211	561	1,697
> 75	25	87	35		5	28	54	123	357
Grand Total	2,202	1,295	390	109	39	291	336	914	5,576

**Current Cleanup Discharge Status by Sub Phase
as of 09-30-15**

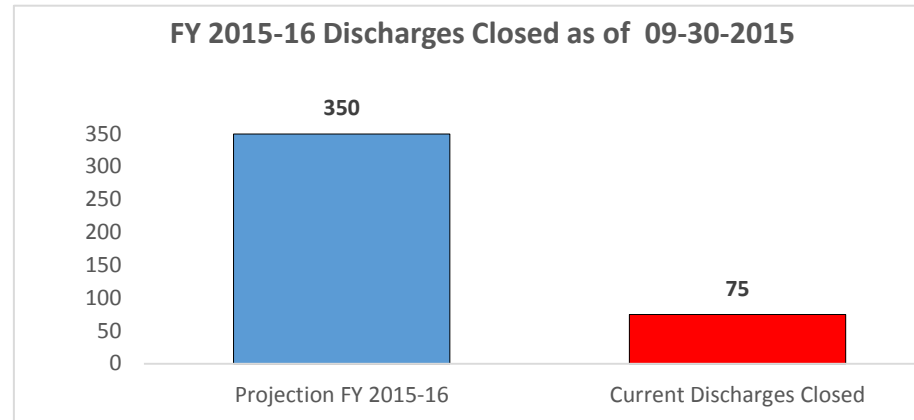


NAM	NATURAL ATTENUATION MONITORING
O&M	OPERATION & MAINTENANCE
PARM	POST ACTIVE REMEDIAL MONITORING
RA/ SSA	REMEDIAL ACTION/ SUPPLEMENTAL SITE
RAC	REMEDIAL ACTION CONSTRUCTION
RAP	REMEDIAL ACTION PLAN
SA	SITE ASSESSMENT
SR	SOURCE REMOVAL

CURRENT ELIGIBLE DISCHARGE STATUS

FY 2015-16 DISCHARGES CLOSED as of 09-30-2015		
Projection FY 2015-16	Current Discharges Closed	Percent
350	75	21.4%

75



Eligible Discharges Rehabilitated per Fiscal Year as of 09-30-15

