

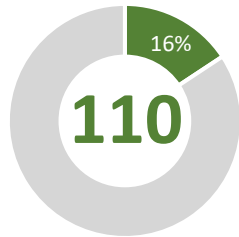
Current Eligible Discharge Statuses

as of September 3, 2018



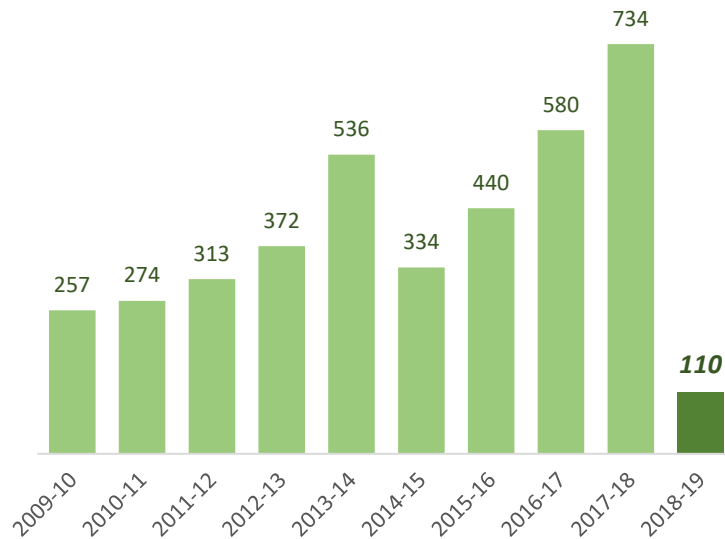
FY 2018-19 Discharges Closed to Date

Total Closed to Date:

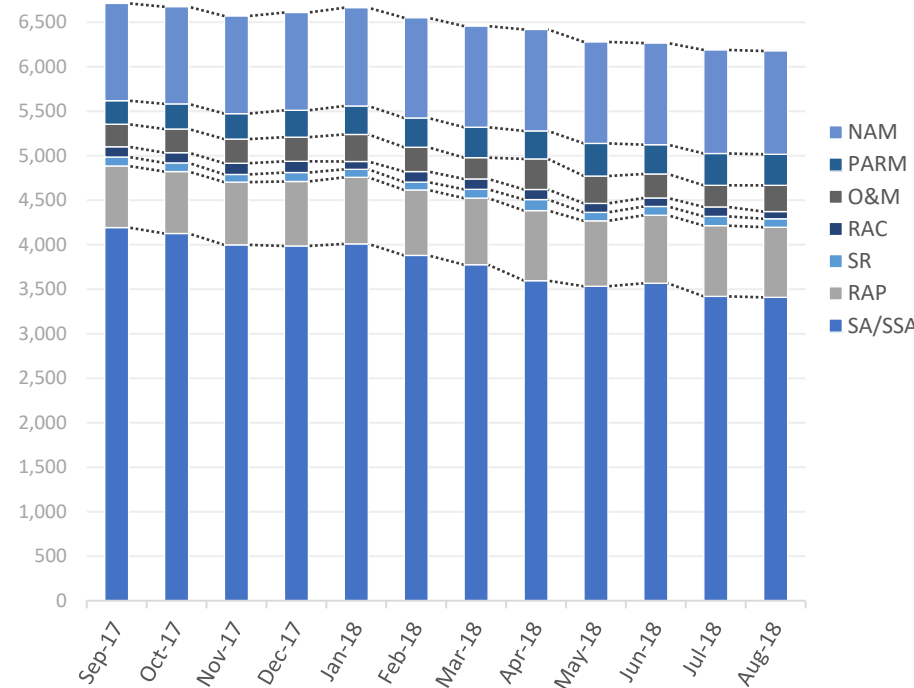


type	closures	% of total
LNFA	8	7%
NFA/SRCO	99	90%
NFAC	3	3%
NREQ	0	0%

Discharge Closures by Fiscal Year

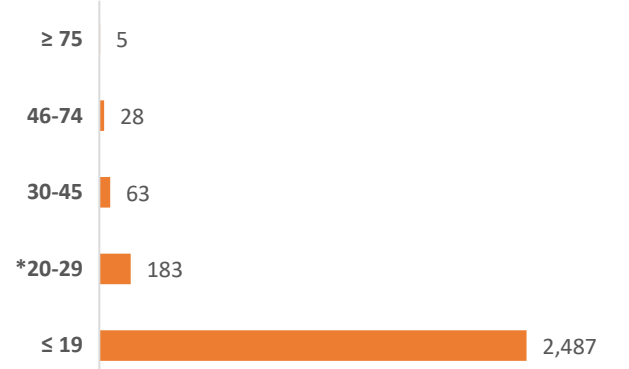


Monthly Snapshot of Active Discharge Sub-Phases



Sub-Phase	Sep-17	Oct-17	Nov-17	Dec-17	Jan-18	Feb-18	Mar-18	Apr-18	May-18	Jun-18	Jul-18	Aug-18
Site Assessment/Supplemental (SA/SSA)	4,193	4,127	3,998	3,986	4,010	3,880	3,775	3,596	3,533	3,567	3,420	3,409
Remedial Action Plan (RAP)	692	695	705	725	747	736	749	787	735	765	794	788
Source Removal (SR)	101	97	87	100	90	87	99	124	96	99	104	95
Remedial Action Construction (RAC)	115	116	125	126	88	120	116	113	101	95	106	80
Operation & Maintenance (O&M)	253	265	272	271	304	273	240	345	306	270	244	295
Post Active Remedial Monitoring (PARM)	265	283	286	302	320	328	342	314	368	328	358	350
Natural Attenuation Monitoring (NAM)	1,093	1,091	1,096	1,100	1,104	1,126	1,135	1,140	1,139	1,142	1,163	1,160

Current Inactive Discharge Scores

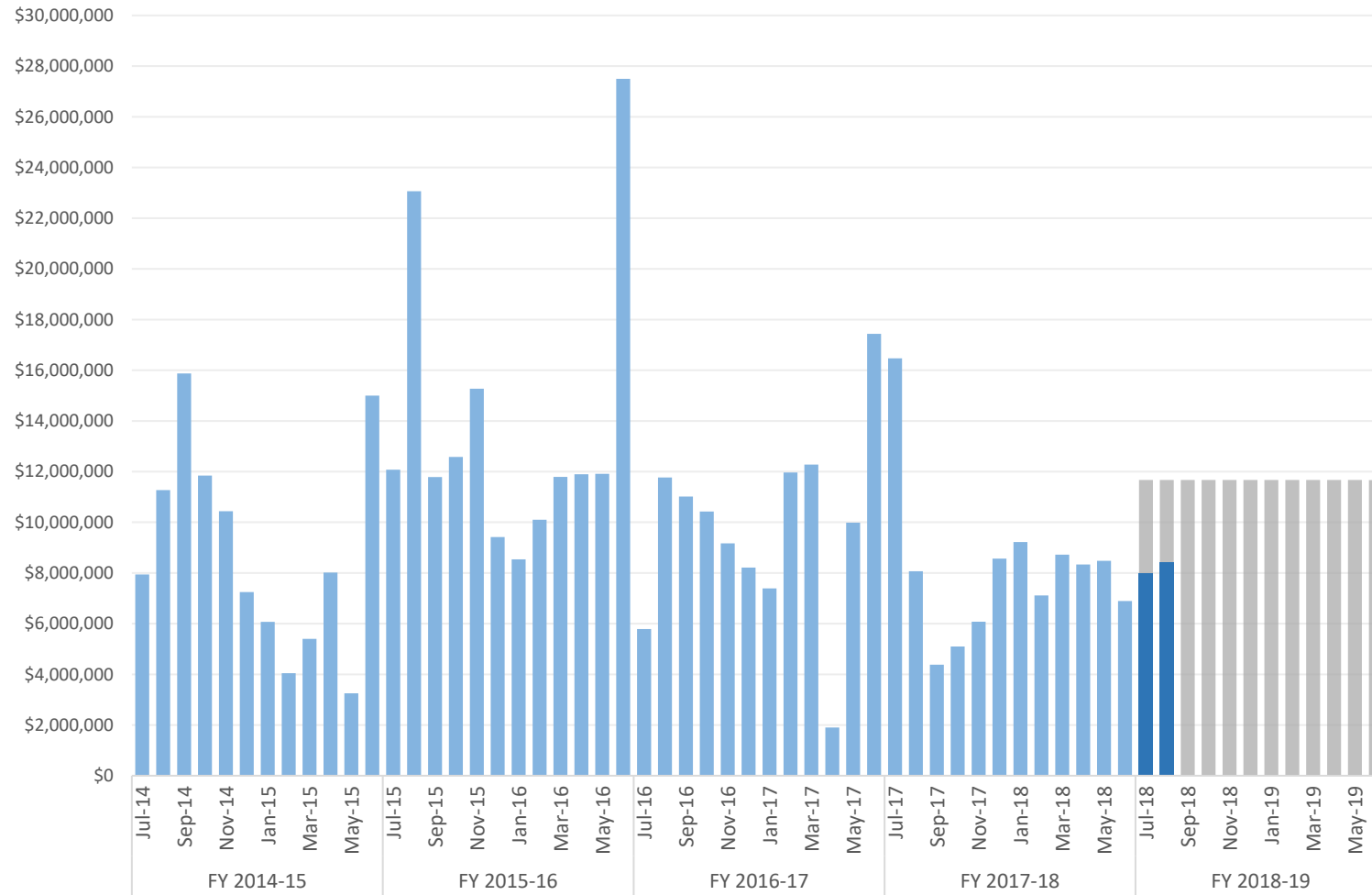


* The current Priority Score Funding Threshold is 20.

Encumbrances, Assignments, & Assessments

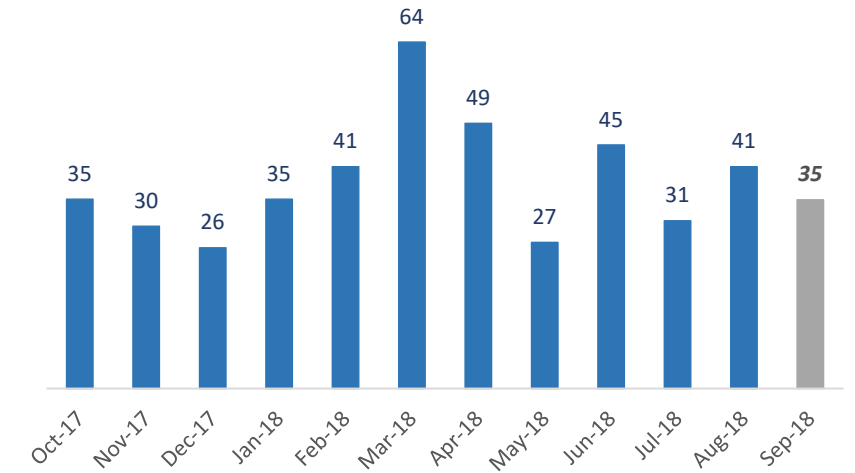
Monthly Net Encumbrance Amounts *(with FY 18-19 projections)*

as of August 29, 2018



CSF Assignments by Month *(with 1-month projection)*

as of September 3, 2018



FY 18-19 New Assessments by Month

as of September 3, 2018

Month	Number of New Assessments
July 2018	45
August 2018	43
September 2018	
October 2018	
November 2018	
December 2018	
January 2019	
February 2019	
March 2019	
April 2019	
May 2019	
June 2019	
Total	88

Encumbrance Activity

as of August 29, 2018

FY 2018-19 Encumbrances by Month

Month	FY Projection	Encumbered	*Net Encumbered	Net Percentage
July 2018	\$ 11,667,750	\$ 9,244,371	\$ 7,961,274	68%
August 2018	\$ 11,667,750	\$ 10,471,706	\$ 8,410,410	72%
September 2018	\$ 11,667,750	-	-	0%
October 2018	\$ 11,667,750	-	-	0%
November 2018	\$ 11,667,750	-	-	0%
December 2018	\$ 11,667,750	-	-	0%
January 2019	\$ 11,667,750	-	-	0%
February 2019	\$ 11,667,750	-	-	0%
March 2019	\$ 11,667,750	-	-	0%
April 2019	\$ 11,667,750	-	-	0%
May 2019	\$ 11,667,750	-	-	0%
June 2019	\$ 11,667,248	-	-	0%
Grand Total	\$ 140,012,498	\$ 19,716,077	\$ 16,371,684	12%

FY 2018-19 Fiscal Activity by Phase

Phase	August 2018		FY to Date	
	Count	Amount	Count	Amount
Low Score Site Initiative	75	\$ 1,274,511	128	\$ 2,086,758
Site Assessment <i>(including LSA)</i>	66	\$ 2,590,994	135	\$ 5,246,053
Source Removal <i>(including FPR)</i>	6	\$ 1,479,703	10	\$ 2,907,080
Remedial Action Plan <i>(including Pilot Test)</i>	37	\$ 1,149,369	72	\$ 2,091,459
Remedial Action Construction	12	\$ 2,008,819	21	\$ 3,680,058
Operation & Maintenance	13	\$ 1,271,802	21	\$ 1,973,016
Post Active Remedial Monitoring	6	\$ 89,936	12	\$ 433,753
Natural Attenuation Monitoring	46	\$ 542,774	91	\$ 1,130,442
Well Abandonment/SRCO	8	\$ 63,796	19	\$ 167,459
Sub Total	269	\$ 10,471,706	509	\$ 19,716,077

Total Encumbered by Fiscal Year Allocation

Fiscal Year	FCO Appropriation	**Total Encumbered	Appropriation Balance
FY 2017-18 <i>(carry over)</i>	\$ 30,012,498	\$ 16,206,757	\$ 13,805,741
FY 2018-19	\$ 110,000,000	\$ 0	\$ 110,000,000

FY 2018-19 Net Fiscal Activity

Activity	August 2018	FY to Date
Purchase/Work Orders	\$ 10,471,706	\$ 19,716,077
STCM Change Orders & Adjustments	\$ (2,316,980)	\$ (3,779,994)
Utilities	\$ 255,684	\$ 435,602
Total**	\$ 8,410,410	\$ 16,371,684

* Includes WOs, POs, COs, Utilities & Adjustments.

** Monthly Net Results totals are calculated from PO/WOs sent to F&A; Total Encumbered by Fiscal Year is calculated from all encumbered in STCM.