

Current Eligible Discharge Statuses

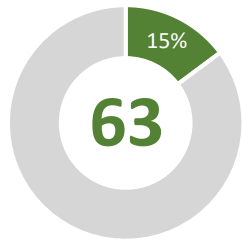
as of August 31, 2020



0% 3% 5% 8% 10% 13% 15% 18% 20% 23% 25% 28% 30% 33% 35% 38% 40% 43% 45% 48% 50% 53% 55% 58% 60% 63% 65% 68% 70% 73% 75% 78% 80% 83% 85% 88% 90% 93% 95% 98% 100%

FY 2020-21 Discharges Closed to Date

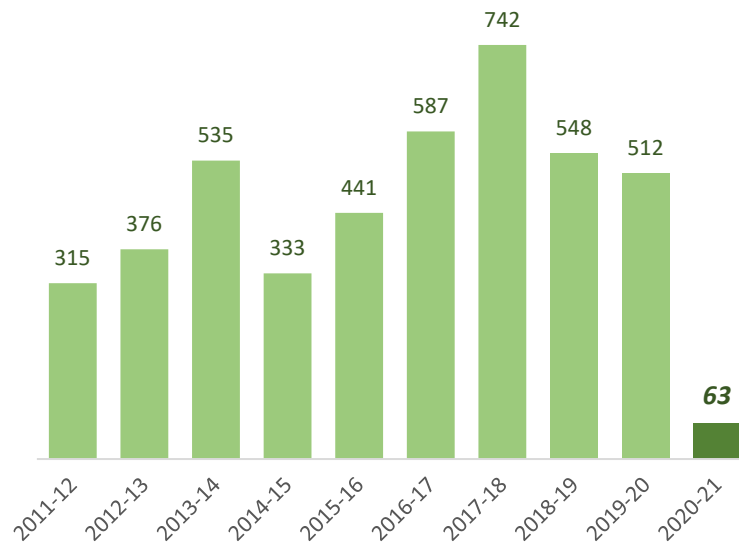
Total Closed to Date:



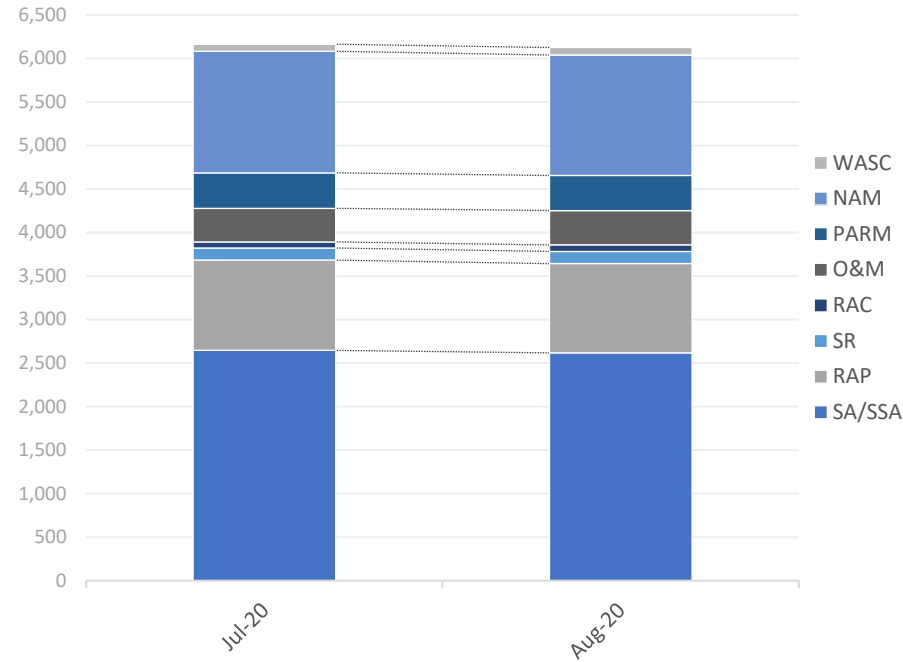
of 425
projected closures

type	closures	% of total
LNFA	3	5%
NFA/SRSCO	59	94%
NFAC	1	2%
NREQ	0	0%

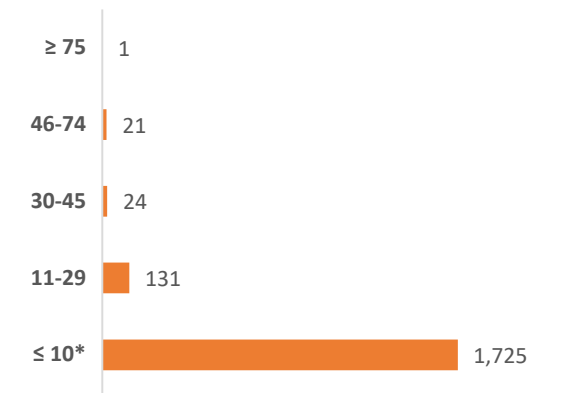
Discharge Closures by Fiscal Year



Monthly Snapshot of Active Discharge Sub-Phases



Current Inactive Discharge Scores



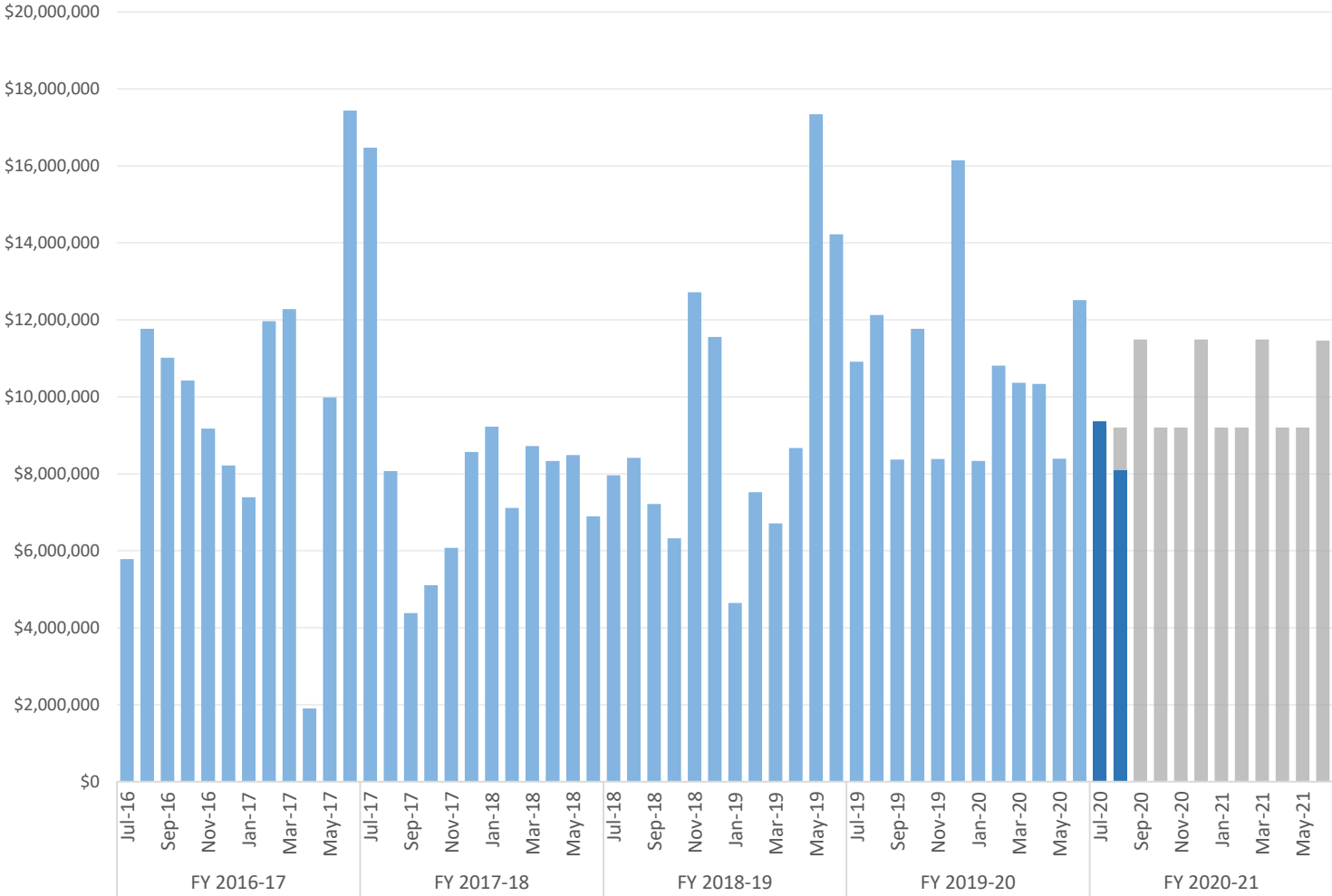
* The current Priority Score Funding Threshold is 11.

Sub-Phase	Jul-20	Aug-20	Sep-20	Oct-20	Nov-20	Dec-20	Jan-21	Feb-21	Mar-21	Apr-21	May-21	Jun-21
Site Assessment/Supplemental (SA/SSA)	2,646	2,618										
Remedial Action Plan (RAP)	1,038	1,025										
Source Removal (SR)	139	141										
Remedial Action Construction (RAC)	70	74										
Operation & Maintenance (O&M)	386	396										
Post Active Remedial Monitoring (PARM)	408	402										
Natural Attenuation Monitoring (NAM)	1,397	1,385										
Well Abandonment/SRSCO (WASC)	81	86										

Encumbrances, Assignments, & Assessments

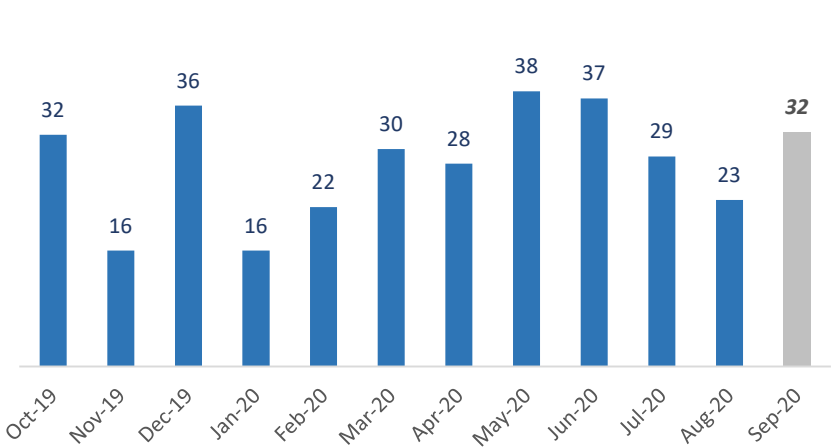
Monthly Net Encumbrance Amounts (with FY 20-21 projections)

as of August 26, 2020



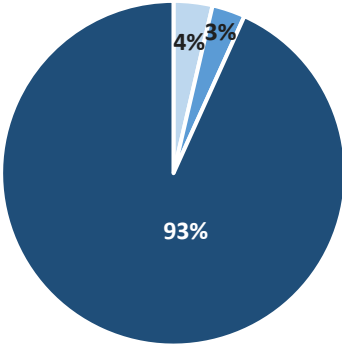
CSF Assignments by Month (with 1-month projection)

as of August 31, 2020



Current Eligible Discharge Assessment Statuses

as of August 31, 2020



Assessment Status	Discharges
Needed	293
Ongoing	249
Report Approved*	7,487

* Does not include 11,435 completed discharges.

Encumbrance Activity

as of August 26, 2020

FY 2020-21 Encumbrances by Month

Month	Available Funds	FY Projection	Encumbered	*Net Encumbered	Net Percent of Projection
July 2020	\$ 10,000,000	\$ 9,200,100	\$ 11,813,915	\$ 9,359,728	102%
August 2020	\$ 10,000,000	\$ 9,200,100	\$ 10,454,498	\$ 8,079,320	88%
September 2020	\$ 10,000,000	\$ 11,490,000	-	-	0%
October 2020	\$ 10,000,000	\$ 9,200,100	-	-	0%
November 2020	\$ 10,000,000	\$ 9,200,100	-	-	0%
December 2020	\$ 10,000,000	\$ 11,490,000	-	-	0%
January 2021	\$ 10,000,000	\$ 9,200,100	-	-	0%
February 2021	\$ 10,000,000	\$ 9,200,100	-	-	0%
March 2021	\$ 10,000,000	\$ 11,490,000	-	-	0%
April 2021	\$ 10,000,000	\$ 9,200,100	-	-	0%
May 2021	\$ 10,000,000	\$ 9,200,000	-	-	0%
June 2021	\$ 9,530,701	\$ 11,460,000	-	-	0%
Grand Total	\$ 119,530,701	\$ 119,530,700	\$ 22,268,413	\$ 17,439,047	15%

FY 2020-21 Fiscal Activity by Phase

Phase	August 2020		FY to Date	
	Count	Amount	Count	Amount
Low Score Site Initiative	31	\$ 529,103	56	\$ 979,982
Site Assessment <i>(incl. LSA)</i>	84	\$ 2,758,382	148	\$ 4,841,399
Source Removal <i>(incl. FPR)</i>	9	\$ 1,524,102	16	\$ 4,805,712
Remedial Action Plan <i>(incl. Pilot Test)</i>	34	\$ 543,301	60	\$ 1,002,816
Remedial Action Construction	19	\$ 2,466,453	34	\$ 4,311,959
Operation & Maintenance	16	\$ 1,815,533	42	\$ 4,665,200
Post Active Remedial Monitoring	7	\$ 137,925	13	\$ 259,118
Natural Attenuation Monitoring	43	\$ 543,564	86	\$ 1,118,469
Well Abandonment/SRCO	14	\$ 136,134	32	\$ 283,757
Sub Total	257	\$ 10,454,498	487	\$ 22,268,413

Total Encumbered by Fiscal Year Allocation

Fiscal Year	FCO Appropriation	**Total Encumbered	Appropriation Balance
FY 2019-20 <i>(carry over)</i>	\$ 4,530,701	\$ 4,530,701	\$ 0
FY 2020-21	\$ 115,000,000	\$ 13,069,883	\$ 101,930,117

FY 2020-21 Net Fiscal Activity

Activity	August 2020	FY to Date
Purchase/Work Orders	\$ 10,454,498	\$ 22,268,413
Change Orders & Adjustments	\$ (2,582,040)	\$ (5,252,870)
Utilities	\$ 206,862	\$ 423,505
Total**	\$ 8,079,320	\$ 17,439,047

* Includes WOs, POs, COs, Utilities & Adjustments.

** Monthly Net Results totals are calculated from PO/WOs sent to F&A; Total Encumbered by Fiscal Year is calculated from all encumbered in STCM.