

# Current Eligible Discharge Statuses

as of March 31, 2019

Completed (55%)  
10,714

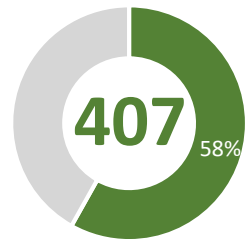
Active (32%)  
6,106

Awaiting (13%)  
2,553



## FY 2018-19 Discharges Closed to Date

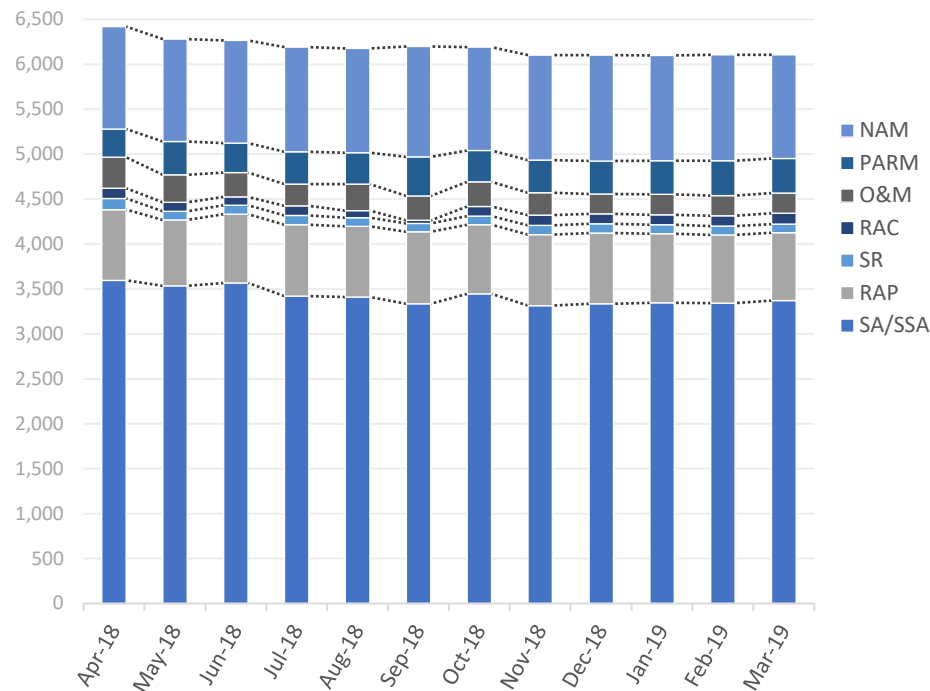
### Total Closed to Date:



of 700  
projected closures

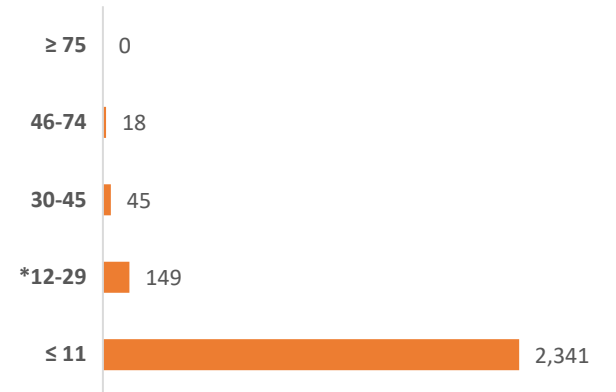
type	closures	% of total
LNFA	33	8%
NFA/SRCO	361	89%
NFAC	10	2%
NREQ	3	1%

## Monthly Snapshot of Active Discharge Sub-Phases



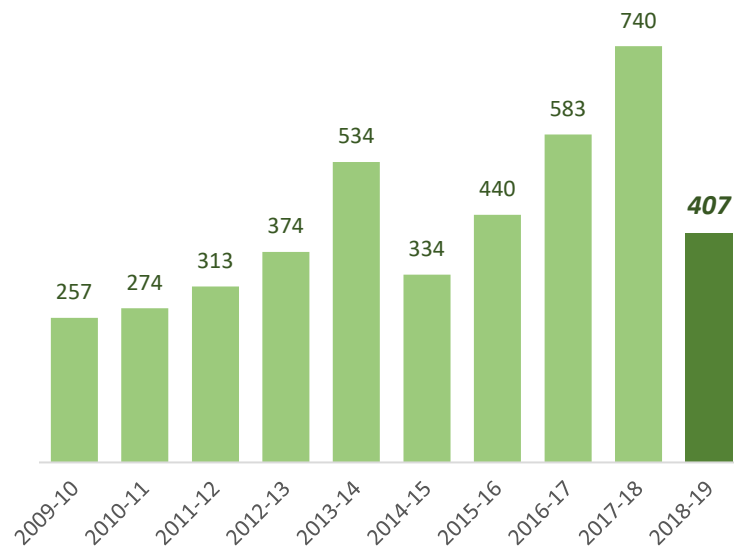
Sub-Phase	Apr-18	May-18	Jun-18	Jul-18	Aug-18	Sep-18	Oct-18	Nov-18	Dec-18	Jan-19	Feb-19	Mar-19
Site Assessment/Supplemental (SA/SSA)	3,596	3,533	3,567	3,420	3,409	3,335	3,445	3,315	3,335	3,346	3,341	3,370
Remedial Action Plan (RAP)	787	735	765	794	788	802	770	790	787	768	760	757
Source Removal (SR)	124	96	99	104	95	90	96	101	104	101	98	94
Remedial Action Construction (RAC)	113	101	95	106	80	36	108	115	110	109	116	121
Operation & Maintenance (O&M)	345	306	270	244	295	272	271	249	221	227	222	224
Post Active Remedial Monitoring (PARM)	314	368	328	358	350	435	351	364	367	377	389	384
Natural Attenuation Monitoring (NAM)	1,140	1,139	1,142	1,163	1,160	1,226	1,148	1,167	1,176	1,170	1,179	1,156

## Current Inactive Discharge Scores



\* The current Priority Score Funding Threshold is 12.

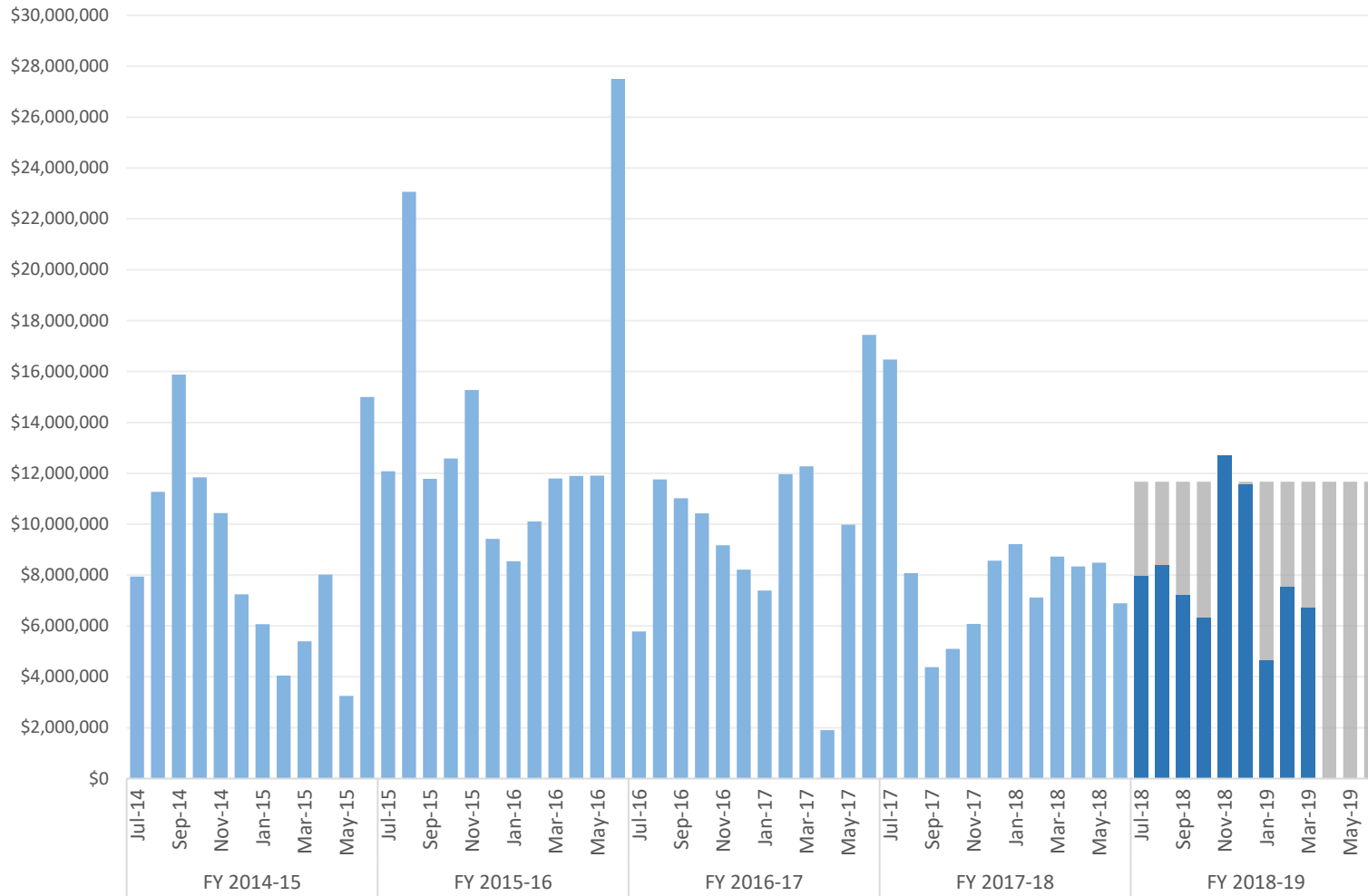
## Discharge Closures by Fiscal Year



# Encumbrances, Assignments, & Assessments

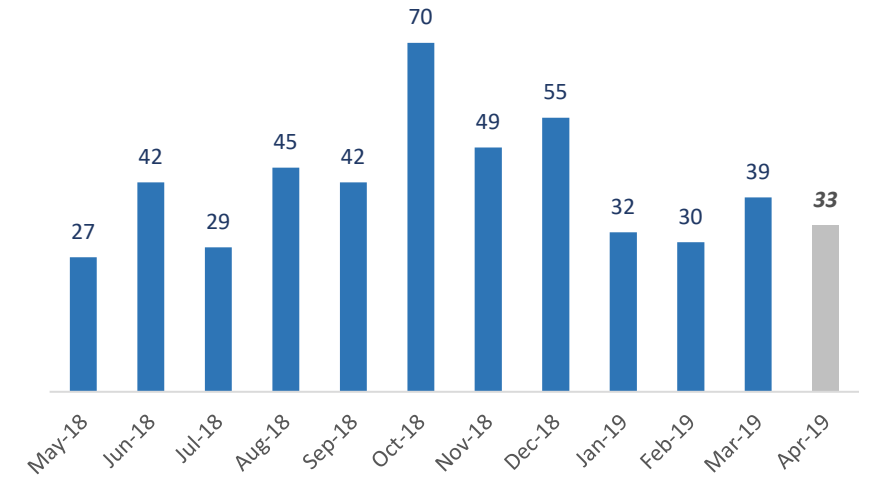
## Monthly Net Encumbrance Amounts *(with FY 18-19 projections)*

as of March 27, 2019



## CSF Assignments by Month *(with 1-month projection)*

as of March 31, 2019



## FY 18-19 New Assessments by Month

as of March 31, 2019

Month	Number of New Assessments
July 2018	40
August 2018	43
September 2018	52
October 2018	39
November 2018	57
December 2018	42
January 2019	45
February 2019	53
March 2019	42
April 2019	
May 2019	
June 2019	
<b>Total</b>	<b>413</b>

# Encumbrance Activity

as of March 27, 2019

## FY 2018-19 Encumbrances by Month

Month	FY Projection	Encumbered	*Net Encumbered	Net Percentage
July 2018	\$ 11,667,750	\$ 9,244,371	\$ 7,961,274	68%
August 2018	\$ 11,667,750	\$ 10,471,706	\$ 8,410,410	72%
September 2018	\$ 11,667,750	\$ 9,534,673	\$ 7,212,771	62%
October 2018	\$ 11,667,750	\$ 10,005,636	\$ 6,322,746	54%
November 2018	\$ 11,667,750	\$ 12,081,739	\$ 12,716,100	109%
December 2018	\$ 11,667,750	\$ 10,828,281	\$ 11,554,678	99%
January 2019	\$ 11,667,750	\$ 10,156,061	\$ 4,641,280	40%
February 2019	\$ 11,667,750	\$ 9,083,540	\$ 7,523,416	64%
March 2019	\$ 11,667,750	\$ 8,498,409	\$ 6,707,758	57%
April 2019	\$ 11,667,750	-	-	0%
May 2019	\$ 11,667,750	-	-	0%
June 2019	\$ 11,667,248	-	-	0%
<b>Grand Total</b>	<b>\$ 140,012,498</b>	<b>\$ 89,904,415</b>	<b>\$ 73,050,434</b>	<b>52%</b>

## FY 2018-19 Fiscal Activity by Phase

Phase	March 2019		FY to Date	
	Count	Amount	Count	Amount
Low Score Site Initiative	45	\$ 642,730	463	\$ 7,428,415
Site Assessment <i>(including LSA)</i>	80	\$ 3,197,799	706	\$ 25,653,623
Source Removal <i>(including FPR)</i>	4	\$ 591,834	63	\$ 14,106,779
Remedial Action Plan <i>(including Pilot Test)</i>	19	\$ 352,929	300	\$ 6,928,669
Remedial Action Construction	11	\$ 1,733,159	103	\$ 16,180,322
Operation & Maintenance	12	\$ 1,126,169	103	\$ 9,665,300
Post Active Remedial Monitoring	2	\$ 31,307	93	\$ 2,892,000
Natural Attenuation Monitoring	50	\$ 637,356	452	\$ 5,395,610
Well Abandonment/SRCO	12	\$ 185,126	119	\$ 1,653,697
<b>Sub Total</b>	<b>235</b>	<b>\$ 8,498,409</b>	<b>2,402</b>	<b>\$ 89,904,415</b>

## Total Encumbered by Fiscal Year Allocation

Fiscal Year	FCO Appropriation	**Total Encumbered	Appropriation Balance
FY 2017-18 <i>(carry over)</i>	\$ 30,012,498	\$ 30,012,498	\$ 0
FY 2018-19	\$ 110,000,000	\$ 46,959,396	\$ 63,040,604

## FY 2018-19 Net Fiscal Activity

Activity	March 2019	FY to Date
Purchase/Work Orders	\$ 8,498,409	\$ 89,904,415
STCM Change Orders & Adjustments	\$ (2,004,281)	\$ (18,714,548)
Utilities	\$ 213,630	\$ 1,860,567
<b>Total**</b>	<b>\$ 6,707,758</b>	<b>\$ 73,050,434</b>

\* Includes WOs, POs, COs, Utilities & Adjustments.

\*\* Monthly Net Results totals are calculated from PO/WOs sent to F&A; Total Encumbered by Fiscal Year is calculated from all encumbered in STCM.