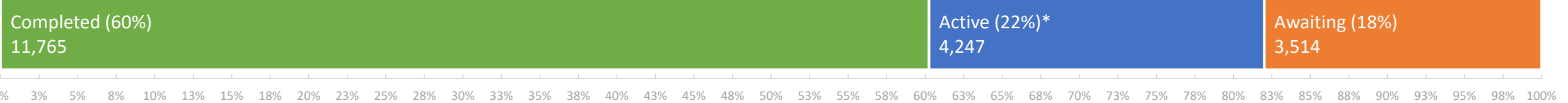


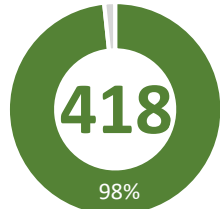
Current Eligible Discharge Statuses

as of May 31, 2021



FY 2020-21 Discharges Closed to Date

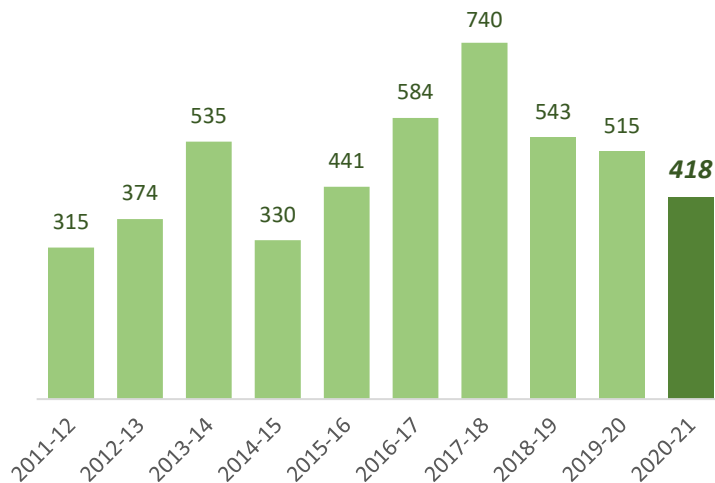
Total Closed to Date:



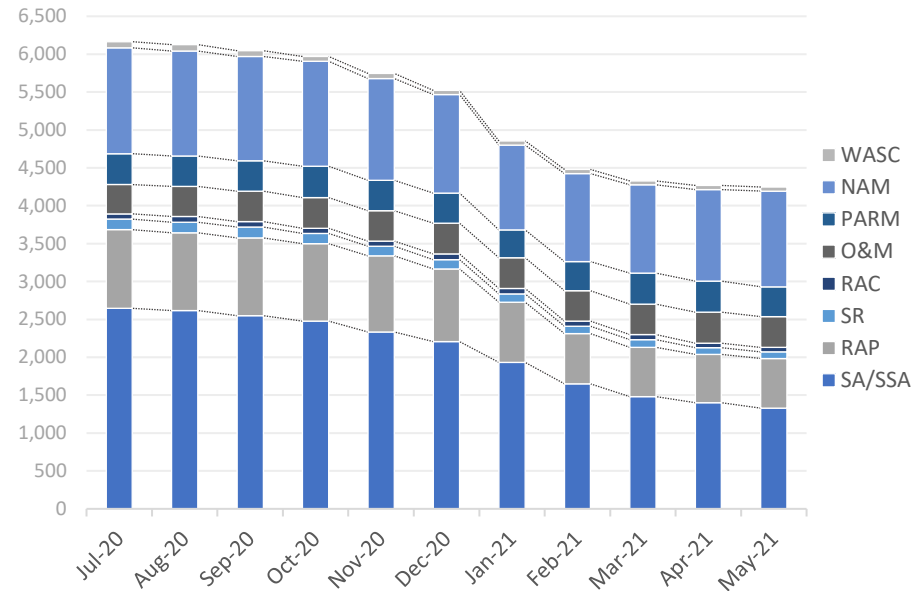
of 425
projected closures

type	closures	% of total
LNFA	33	8%
NFA/SRCO	374	89%
NFAC	11	3%
NREQ	0	0%

Discharge Closures by Fiscal Year

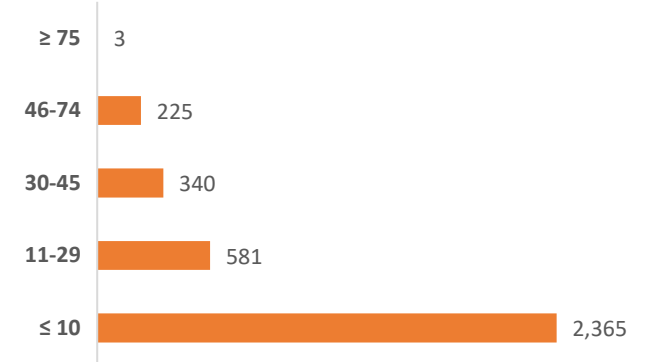


Monthly Snapshot of Active Discharge Sub-Phases



Sub-Phase	Jul-20	Aug-20	Sep-20	Oct-20	Nov-20	Dec-20	Jan-21	Feb-21	Mar-21	Apr-21	May-21	Jun-21
Site Assessment/Supplemental (SA/SSA)	2,646	2,618	2,549	2,478	2,334	2,206	1,932	1,649	1,481	1,401	1,329	
Remedial Action Plan (RAP)	1,038	1,025	1,026	1,022	1,005	961	795	662	651	636	656	
Source Removal (SR)	139	141	142	133	128	122	110	99	101	91	86	
Remedial Action Construction (RAC)	70	74	74	71	67	74	72	69	67	57	59	
Operation & Maintenance (O&M)	386	396	400	405	400	405	403	400	401	412	407	
Post Active Remedial Monitoring (PARM)	408	402	403	413	402	397	371	383	410	409	394	
Natural Attenuation Monitoring (NAM)	1,397	1,385	1,375	1,385	1,343	1,301	1,119	1,162	1,164	1,208	1,263	
Well Abandonment/SRCO (WASC)	81	86	77	63	65	55	55	54	50	53	53	

Current Inactive Discharge Scores

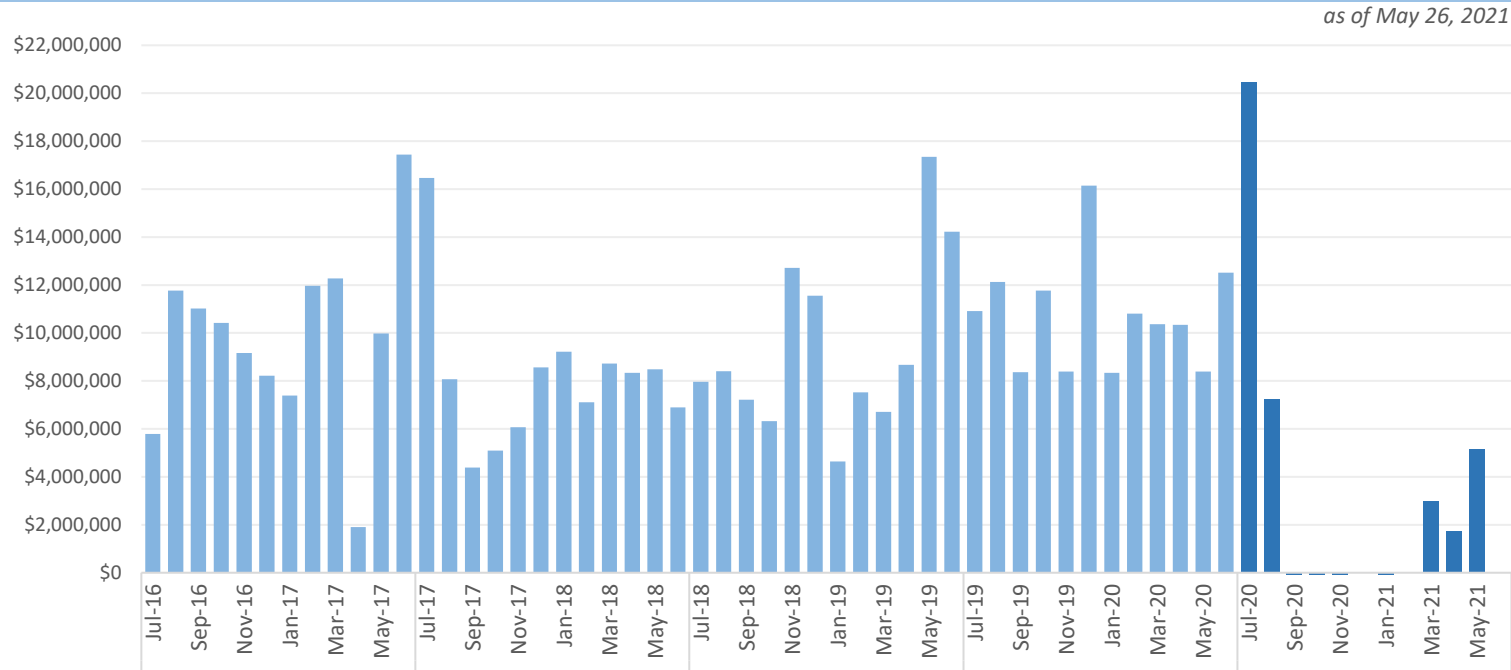


Note: The current Priority Score Funding Threshold is 11.

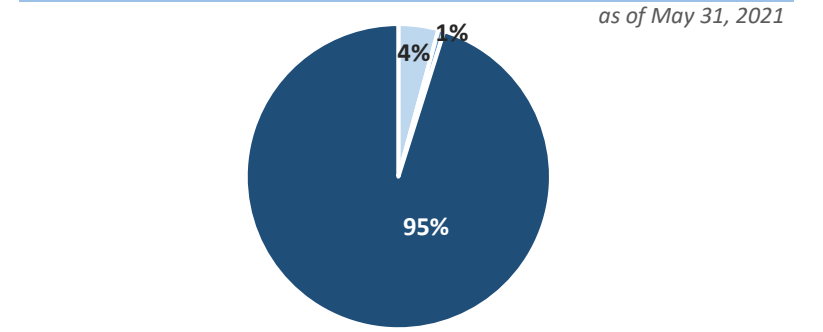
* The count of 'Active' discharges includes 19 eligible discharges currently managed by Districts.

Encumbrances, Assignments, & Assessments

Monthly Net Encumbrance Amounts (FY 2016-17 thru present)



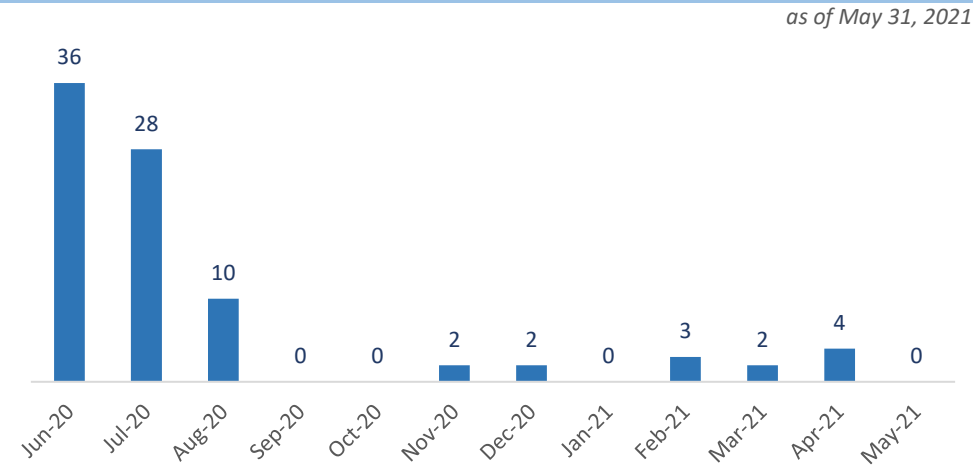
Current Eligible Discharge Assessment Statuses



Assessment Status	Discharges
Needed	329
Ongoing	48
Report Approved*	7,384

* Does not include 11,765 completed discharges.

CSF Assignments by Month



Open Eligible Discharges with Cap Exhausted

as of May 31, 2021

Discharge Status	Discharges
Active	3
Awaiting	0
Total	3

Encumbrance Activity

as of May 26, 2021

FY 2020-21 Encumbrances by Month

Month	WO/PO Encumbered	*Net Encumbered
July 2020 [†]	\$ 11,813,915	\$ 20,444,849
August 2020	\$ 10,454,498	\$ 7,254,320
September 2020	\$ 2,524,065	\$ (2,970,265)
October 2020 [†]	\$ 3,099,629	\$ (2,313,074)
November 2020 [†]	\$ 1,867,006	\$ (1,520,989)
December 2020	\$ 3,072,783	\$ 26,783
January 2021	\$ 1,919,015	\$ (1,576,687)
February 2021	\$ 3,155,368	\$ 40,415
March 2021	\$ 6,212,050	\$ 2,968,332
April 2021	\$ 4,199,084	\$ 1,720,409
May 2021	\$ 7,981,843	\$ 5,141,003
June 2021	-	-
Grand Total	\$ 56,299,256	\$ 29,215,097

[†] Adjustments required due to audit of FY20-21 obligations to date.

Total Encumbered by Fiscal Year Allocation

Fiscal Year	FCO Appropriation	**Total Encumbered	Appropriation Balance
Carry-Over	\$ 4,530,701	\$ 4,530,701	\$ 0
FY 2020-21	\$ 115,000,000	\$ 26,460,119	\$ 88,539,881

* Includes WOs, POs, COs, Utilities & Adjustments.

** Monthly Net Results totals are calculated from PO/WOs sent to F&A; Total Encumbered by Fiscal Year is calculated from all encumbered in STCM.

FY 2020-21 Fiscal Activity by Phase

Phase	May 2021		FY to Date	
	Count	Amount	Count	Amount
Low Score Site Initiative	8	\$ 102,186	191	\$ 2,052,793
Site Assessment (incl. LSA)	20	\$ 721,568	180	\$ 5,718,955
Source Removal (incl. FPR)	1	\$ 63,359	20	\$ 5,105,968
Remedial Action Plan (incl. Pilot Test)	43	\$ 854,920	361	\$ 4,689,166
Remedial Action Construction	7	\$ 740,510	41	\$ 5,052,469
Operation & Maintenance	50	\$ 4,263,182	326	\$ 24,769,053
Post Active Remedial Monitoring	16	\$ 231,545	154	\$ 1,742,301
Natural Attenuation Monitoring	81	\$ 741,662	675	\$ 5,180,890
Well Abandonment/SRCO	23	\$ 262,911	212	\$ 1,987,661
Sub Total	249	\$ 7,981,843	2,160	\$ 56,299,256

Note: Well Abandonment includes POs for Verification for Well Abandonment. LSSI Obligations are reflected only after signed and returned from Contractor and include costs for Well Abandonment Activities under LSSI Cleanup.

FY 2020-21 Net Fiscal Activity

Activity	May 2021	FY to Date
Purchase/Work Orders	\$ 7,981,843	\$ 56,299,256
Change Orders & Adjustments	\$ (3,123,375)	\$ (30,010,831)
Utilities	\$ 282,536	\$ 2,926,672
Total**	\$ 5,141,003	\$ 29,215,097