

Current Eligible Discharge Statuses

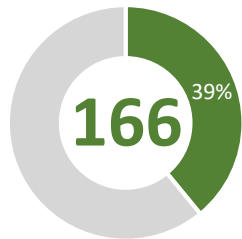
as of November 1, 2020



0% 3% 5% 8% 10% 13% 15% 18% 20% 23% 25% 28% 30% 33% 35% 38% 40% 43% 45% 48% 50% 53% 55% 58% 60% 63% 65% 68% 70% 73% 75% 78% 80% 83% 85% 88% 90% 93% 95% 98% 100%

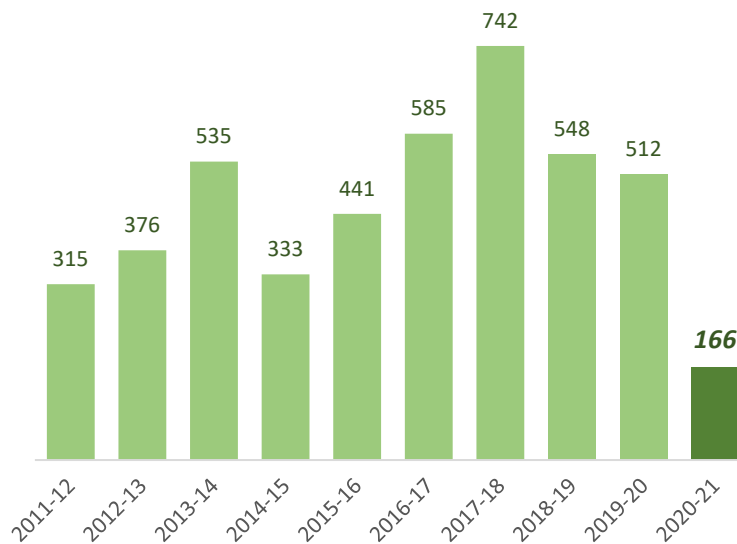
FY 2020-21 Discharges Closed to Date

Total Closed to Date:

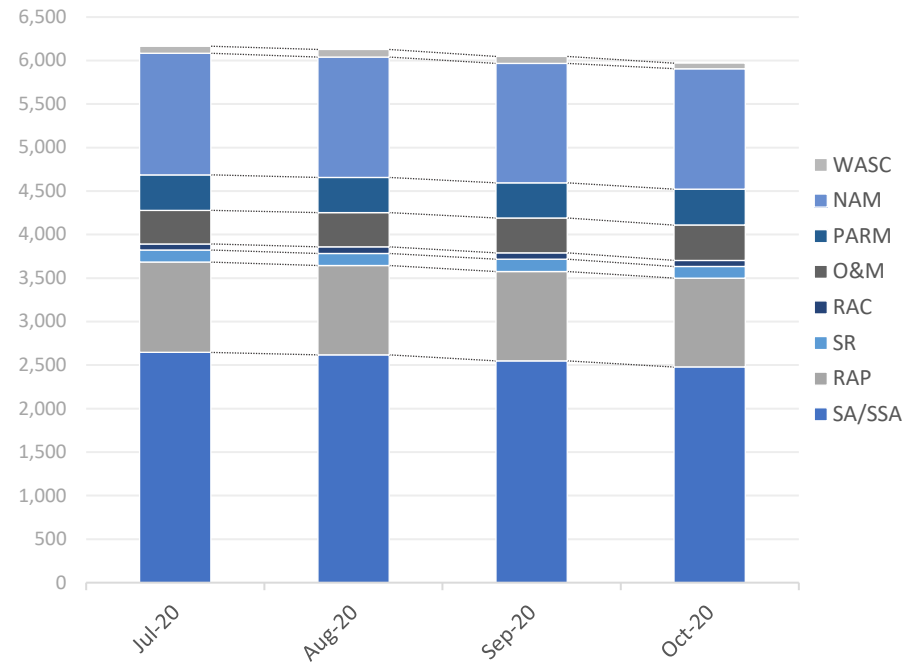


type	closures	% of total
LNFA	11	7%
NFA/SRSCO	149	90%
NFAC	6	4%
NREQ	0	0%

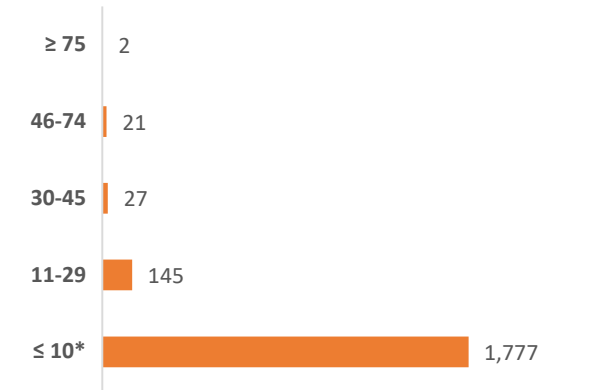
Discharge Closures by Fiscal Year



Monthly Snapshot of Active Discharge Sub-Phases



Current Inactive Discharge Scores



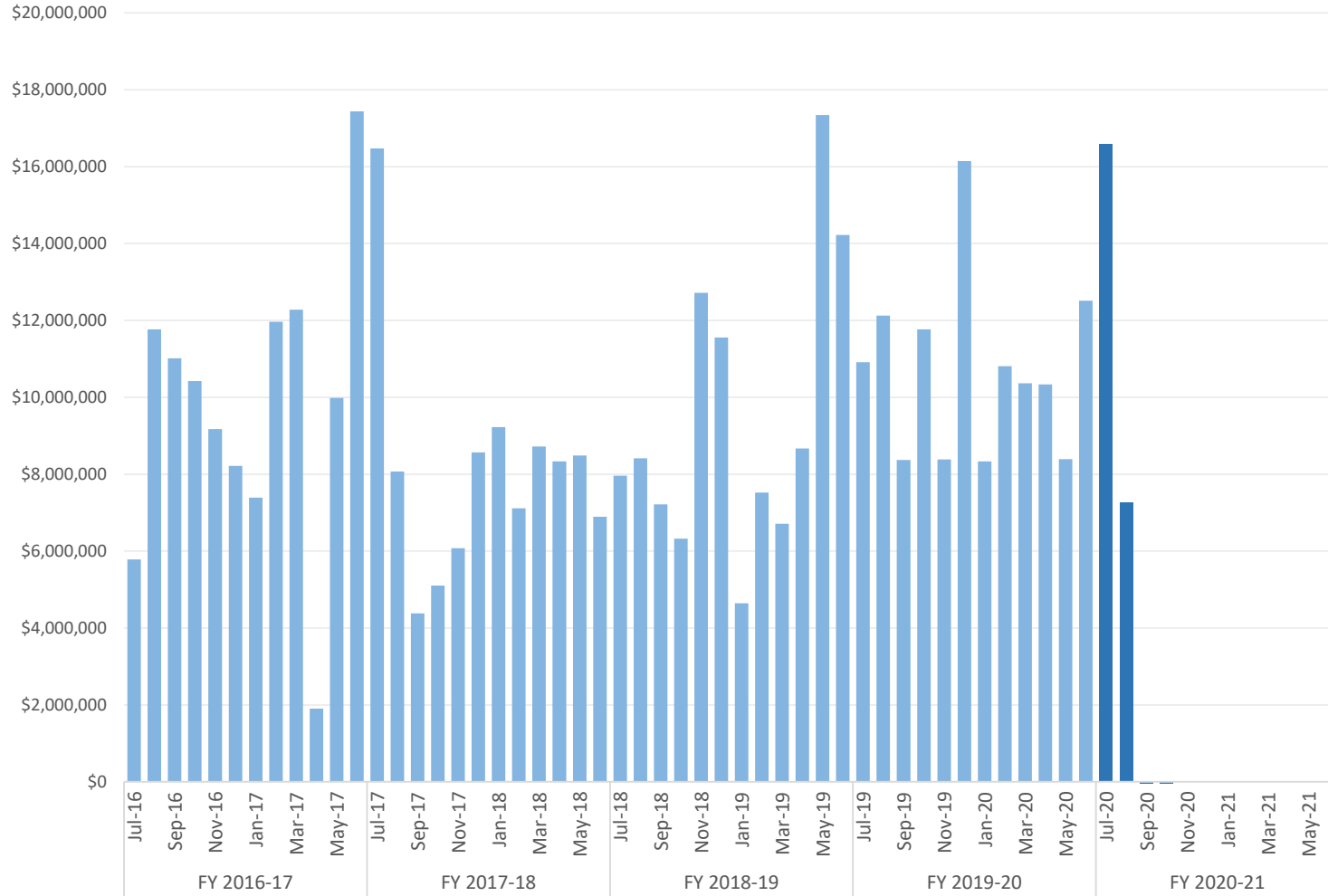
* The current Priority Score Funding Threshold is 11.

Sub-Phase	Jul-20	Aug-20	Sep-20	Oct-20	Nov-20	Dec-20	Jan-21	Feb-21	Mar-21	Apr-21	May-21	Jun-21
Site Assessment/Supplemental (SA/SSA)	2,646	2,618	2,549	2,478								
Remedial Action Plan (RAP)	1,038	1,025	1,026	1,022								
Source Removal (SR)	139	141	142	133								
Remedial Action Construction (RAC)	70	74	74	71								
Operation & Maintenance (O&M)	386	396	400	405								
Post Active Remedial Monitoring (PARM)	408	402	403	413								
Natural Attenuation Monitoring (NAM)	1,397	1,385	1,375	1,385								
Well Abandonment/SRSCO (WASC)	81	86	77	63								

Encumbrances, Assignments, & Assessments

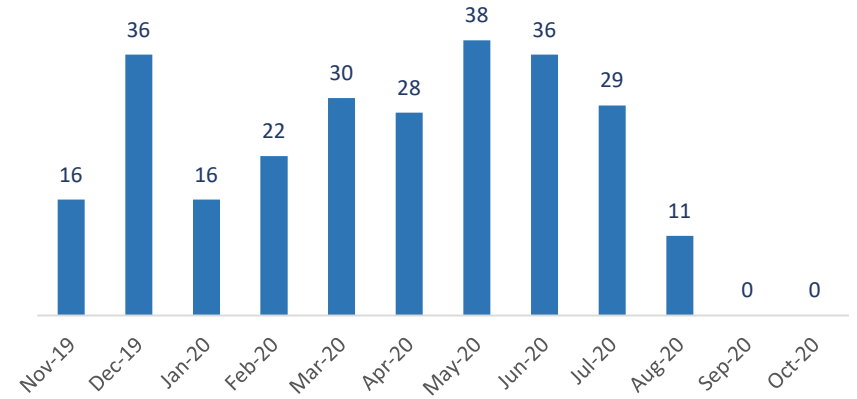
Monthly Net Encumbrance Amounts (FY 2016-17 thru present)

as of October 28, 2020



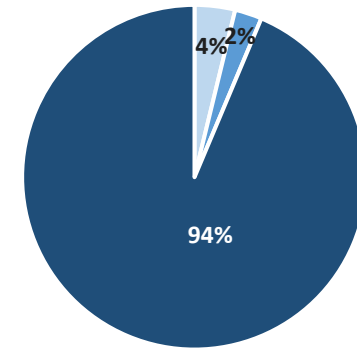
CSF Assignments by Month

as of November 1, 2020



Current Eligible Discharge Assessment Statuses

as of November 1, 2020



Assessment Status	Discharges
Needed	302
Ongoing	202
Report Approved*	7,438

* Does not include 11,536 completed discharges.

Encumbrance Activity

as of October 28, 2020

FY 2020-21 Encumbrances by Month

Month	WO/PO Encumbered	*Net Encumbered
July 2020	\$ 11,813,915	\$ 16,594,721
August 2020	\$ 10,454,498	\$ 7,254,320
September 2020	\$ 2,524,065	\$ (2,970,265)
October 2020	\$ 3,099,629	\$ (6,178,012)
November 2020	-	-
December 2020	-	-
January 2021	-	-
February 2021	-	-
March 2021	-	-
April 2021	-	-
May 2021	-	-
June 2021	-	-
Grand Total	\$ 27,892,106	\$ 14,700,764

Total Encumbered by Fiscal Year Allocation

Fiscal Year	FCO Appropriation	**Total Encumbered	Appropriation Balance
Carry-Over	\$ 4,530,701	\$ 4,530,701	\$ 0
FY 2020-21	\$ 115,000,000	\$ 14,227,014	\$ 100,772,986

* Includes WOs, POs, COs, Utilities & Adjustments.

** Monthly Net Results totals are calculated from PO/WOs sent to F&A; Total Encumbered by Fiscal Year is calculated from all encumbered in STCM.

FY 2020-21 Fiscal Activity by Phase

Phase	October 2020		FY to Date	
	Count	Amount	Count	Amount
Low Score Site Initiative	15	\$ 47,928	79	\$ 1,162,619
Site Assessment (incl. LSA)	0	\$ 0	148	\$ 4,841,399
Source Removal (incl. FPR)	0	\$ 0	16	\$ 4,805,712
Remedial Action Plan (incl. Pilot Test)	0	\$ 0	60	\$ 1,002,816
Remedial Action Construction	0	\$ 0	34	\$ 4,311,959
Operation & Maintenance	35	\$ 2,807,857	100	\$ 9,690,226
Post Active Remedial Monitoring	0	\$ 0	13	\$ 259,118
Natural Attenuation Monitoring	0	\$ 0	86	\$ 1,118,469
Well Abandonment/SRCO	28	\$ 243,843	75	\$ 699,789
Sub Total	78	\$ 3,099,629	611	\$ 27,892,106

Note: Well Abandonment includes POs for Verification for Well Abandonment. LSSI Obligations are reflected only after signed and returned from Contractor not when authorized.

FY 2020-21 Net Fiscal Activity

Activity	October 2020	FY to Date
Purchase/Work Orders	\$ 3,099,629	\$ 27,892,106
Change Orders & Adjustments	\$ (9,473,322)	\$ (14,051,947)
Utilities	\$ 195,682	\$ 860,604
Total**	\$ (6,178,012)	\$ 14,700,764