

Current Eligible Discharge Statuses

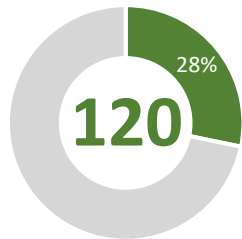
as of October 1, 2020



0% 3% 5% 8% 10% 13% 15% 18% 20% 23% 25% 28% 30% 33% 35% 38% 40% 43% 45% 48% 50% 53% 55% 58% 60% 63% 65% 68% 70% 73% 75% 78% 80% 83% 85% 88% 90% 93% 95% 98% 100%

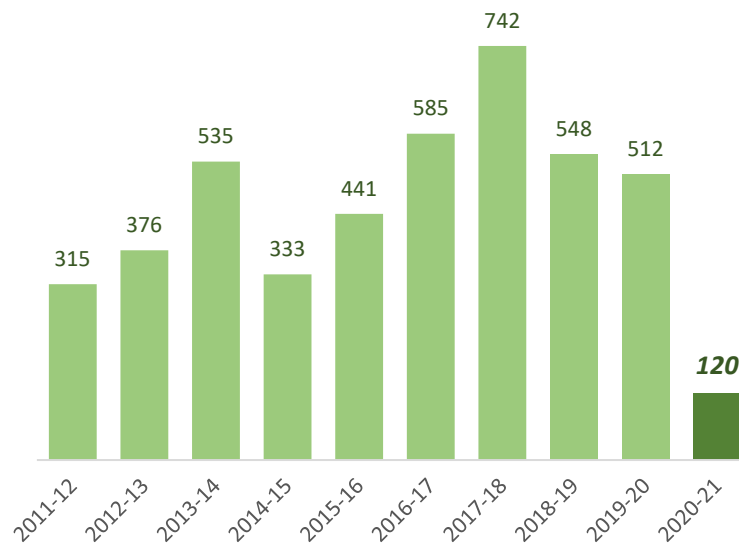
FY 2020-21 Discharges Closed to Date

Total Closed to Date:

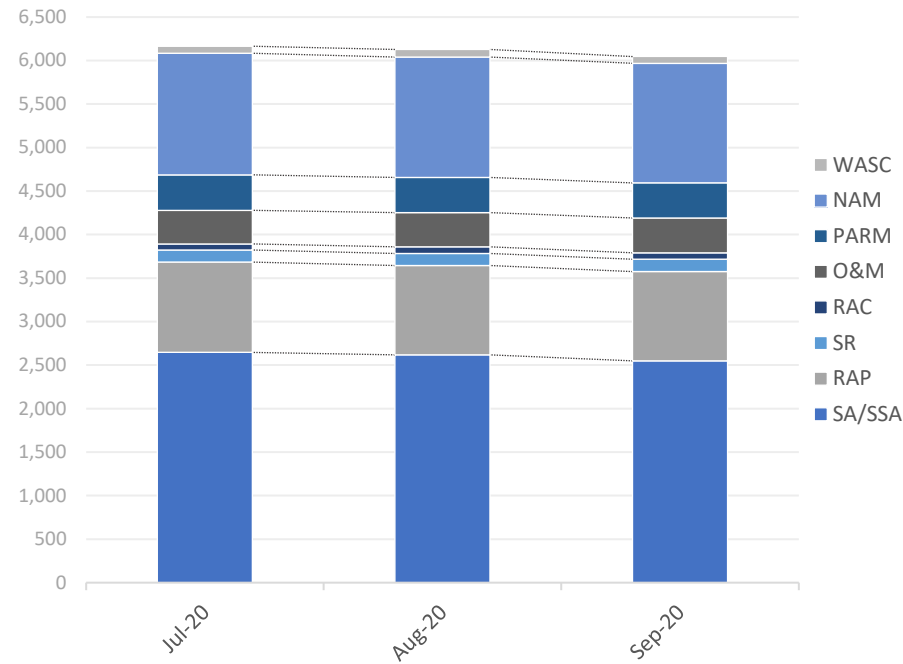


type	closures	% of total
LNFA	9	8%
NFA/SRCO	109	91%
NFAC	2	2%
NREQ	0	0%

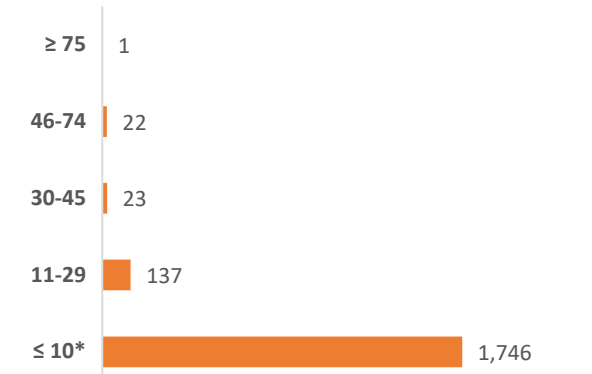
Discharge Closures by Fiscal Year



Monthly Snapshot of Active Discharge Sub-Phases



Current Inactive Discharge Scores



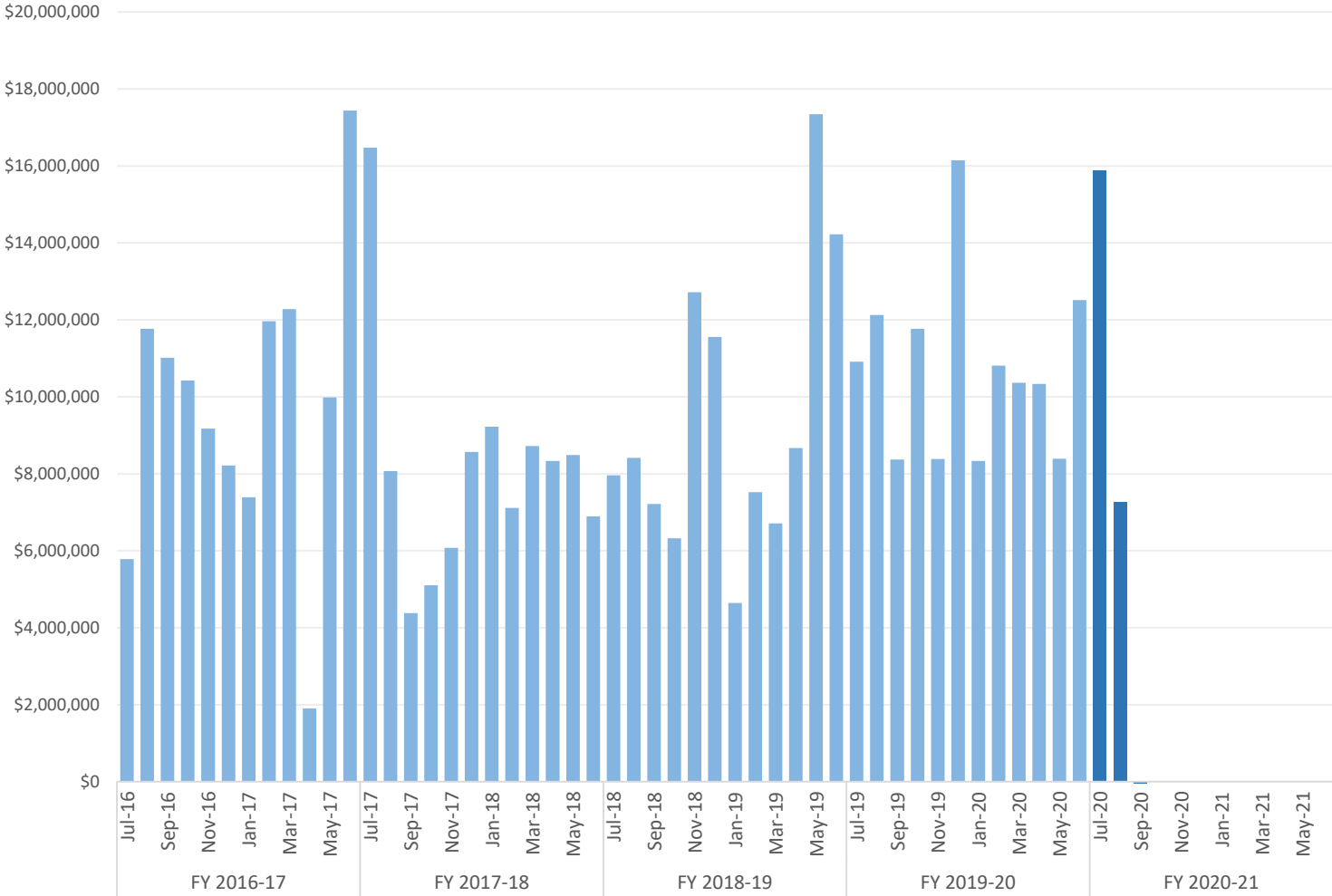
* The current Priority Score Funding Threshold is 11.

Sub-Phase	Jul-20	Aug-20	Sep-20	Oct-20	Nov-20	Dec-20	Jan-21	Feb-21	Mar-21	Apr-21	May-21	Jun-21
Site Assessment/Supplemental (SA/SSA)	2,646	2,618	2,549									
Remedial Action Plan (RAP)	1,038	1,025	1,026									
Source Removal (SR)	139	141	142									
Remedial Action Construction (RAC)	70	74	74									
Operation & Maintenance (O&M)	386	396	400									
Post Active Remedial Monitoring (PARM)	408	402	403									
Natural Attenuation Monitoring (NAM)	1,397	1,385	1,375									
Well Abandonment/SRCO (WASC)	81	86	77									

Encumbrances, Assignments, & Assessments

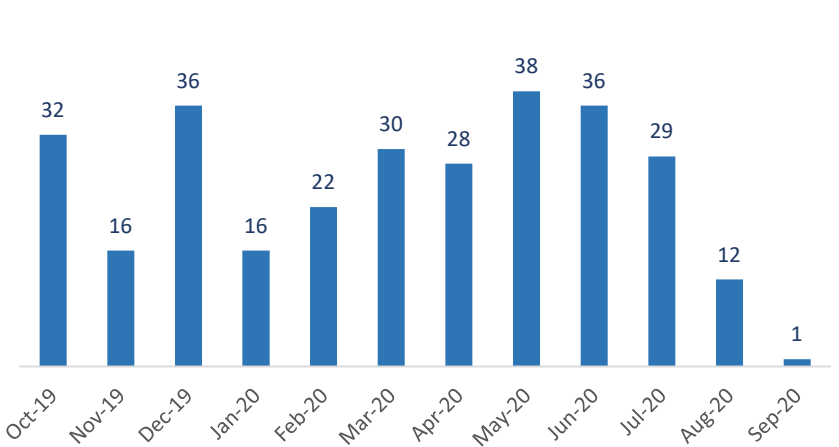
Monthly Net Encumbrance Amounts (FY 2016-17 thru present)

as of September 30, 2020



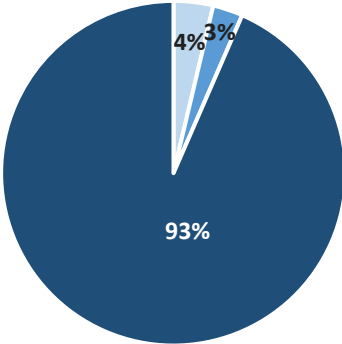
CSF Assignments by Month

as of October 1, 2020



Current Eligible Discharge Assessment Statuses

as of October 1, 2020



Assessment Status	Discharges
Needed	296
Ongoing	225
Report Approved*	7,454

* Does not include 11,490 completed discharges.

Encumbrance Activity

as of September 30, 2020

FY 2020-21 Encumbrances by Month

Month	WO/PO Encumbered	*Net Encumbered
July 2020	\$ 11,813,915	\$ 15,876,605
August 2020	\$ 10,454,498	\$ 7,254,320
September 2020	\$ 2,524,065	\$ (2,970,265)
October 2020	-	-
November 2020	-	-
December 2020	-	-
January 2021	-	-
February 2021	-	-
March 2021	-	-
April 2021	-	-
May 2021	-	-
June 2021	-	-
Grand Total	\$ 24,792,478	\$ 20,160,660

Total Encumbered by Fiscal Year Allocation

Fiscal Year	FCO Appropriation	**Total Encumbered	Appropriation Balance
Carry-Over	\$ 4,530,701	\$ 4,530,701	\$ 0
FY 2020-21	\$ 115,000,000	\$ 20,339,835	\$ 94,660,165

* Includes WOs, POs, COs, Utilities & Adjustments.

** Monthly Net Results totals are calculated from PO/WOs sent to F&A; Total Encumbered by Fiscal Year is calculated from all encumbered in STCM.

FY 2020-21 Fiscal Activity by Phase

Phase	September 2020		FY to Date	
	Count	Amount	Count	Amount
Low Score Site Initiative	8	\$ 134,708	64	\$ 1,114,690
Site Assessment (incl. LSA)	0	\$ 0	148	\$ 4,841,399
Source Removal (incl. FPR)	0	\$ 0	16	\$ 4,805,712
Remedial Action Plan (incl. Pilot Test)	0	\$ 0	60	\$ 1,002,816
Remedial Action Construction	0	\$ 0	34	\$ 4,311,959
Operation & Maintenance	23	\$ 2,217,169	65	\$ 6,882,369
Post Active Remedial Monitoring	0	\$ 0	13	\$ 259,118
Natural Attenuation Monitoring	0	\$ 0	86	\$ 1,118,469
Well Abandonment/SRCO	15	\$ 172,189	47	\$ 455,946
Sub Total	46	\$ 2,524,065	533	\$ 24,792,478

Note: Well Abandonment includes POs for Verification for Well Abandonment. LSSI Obligations are reflected only after signed and returned from Contractor not when authorized.

FY 2020-21 Net Fiscal Activity

Activity	September 2020	FY to Date
Purchase/Work Orders	\$ 2,524,065	\$ 24,792,478
Change Orders & Adjustments	\$ (5,735,748)	\$ (5,296,740)
Utilities	\$ 241,418	\$ 664,922
Total**	\$ (2,970,265)	\$ 20,160,660