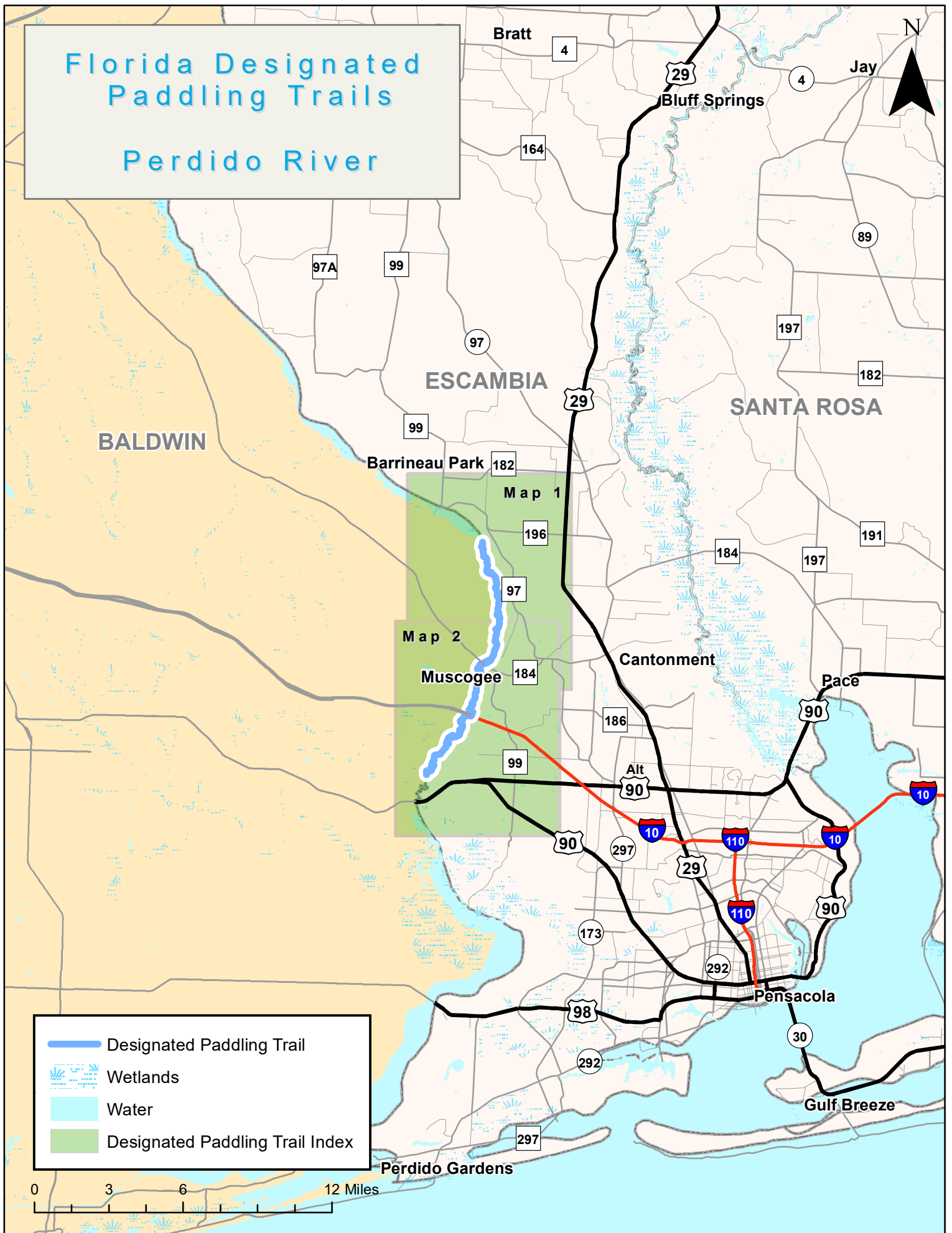
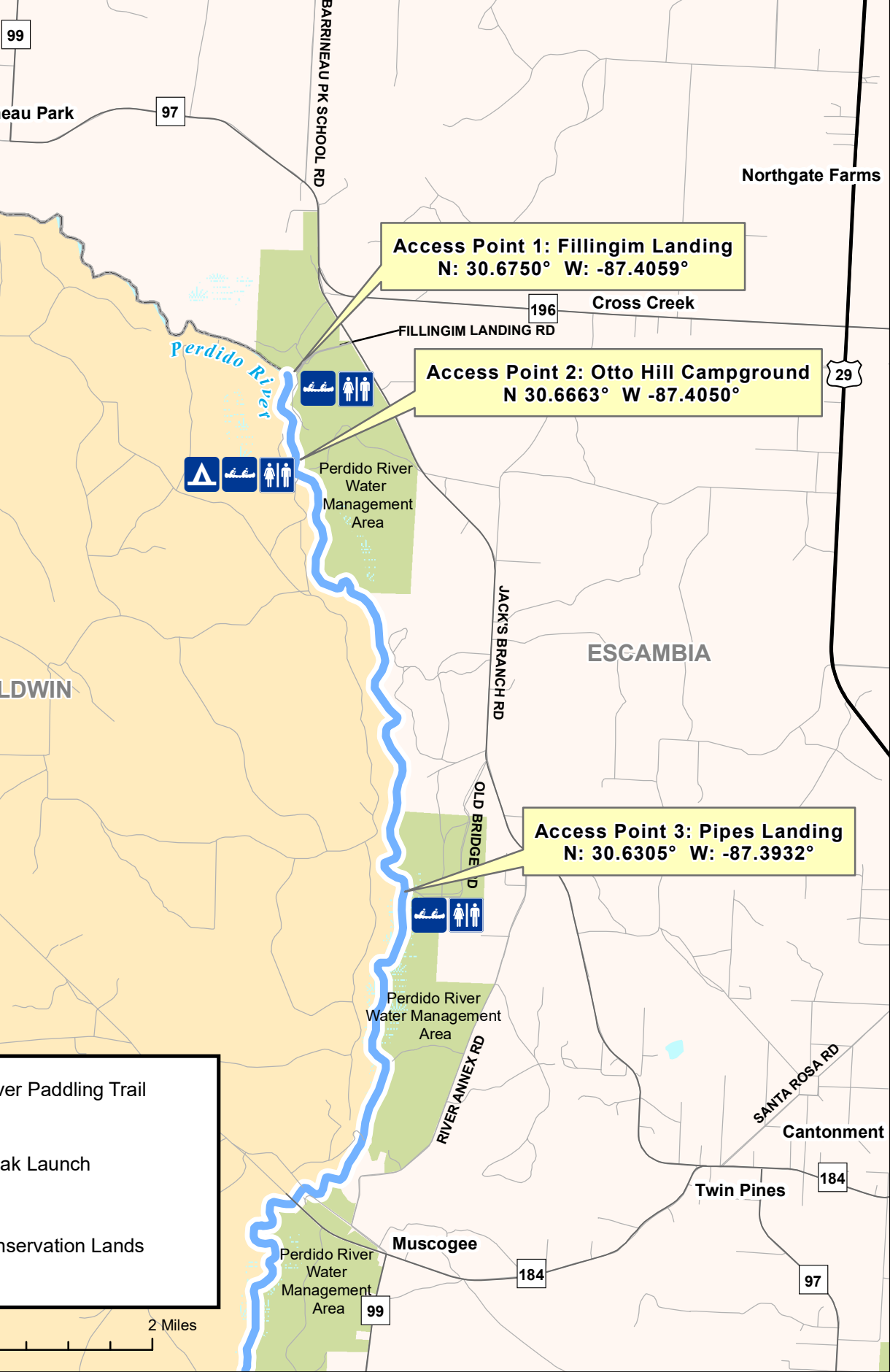


# Florida Designated Paddling Trails

## Perdido River



# Perdido River Paddling Trail Map 1

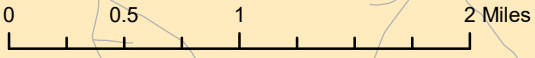


**Access Point 1: Fillingim Landing**  
N: 30.6750° W: -87.4059°

**Access Point 2: Otto Hill Campground**  
N 30.6663° W -87.4050°

**Access Point 3: Pipes Landing**  
N: 30.6305° W: -87.3932°

- Perdido River Paddling Trail
- Camping
- Canoe/Kayak Launch
- Restrooms
- Florida Conservation Lands
- Wetlands



# Perdido River Paddling Trail Map 2



**Access # 4: Adventures Unlimited**  
N: 30.6055 W: -87.3983



Muscogee

184

Perdido River  
Water  
Management  
Area

BALDWIN

ESCAMBIA

KINGSFIELD RD



99

FRANK REEDER RD

**Access # 5: Sand Landing**  
N: 30.5377 W: -87.4399



Keystone

Site 8A Outlying  
Landing Field

SAND  
LANDING RD

90

Beulah

NINE MILE RD

Alt  
90

BEULAH RD

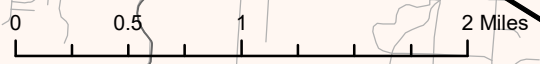
**Access # 6: Wilson B. Robertson  
Boat Launch, US 90**



Perdido River  
Water Management Area

90

- Perdido River Paddling Trail
- Canoe/Kayak Launch
- Restrooms
- Florida Conservation Lands
- Wetlands





# Perdido River Paddling Trail Guide

## The Waterway

The Perdido River flows about 44 miles from southern Alabama to Perdido Bay, forming Florida's western border with Alabama. Perdido River was named by the Spaniards who occupied the area until 1813 and the name is translated as "lost". The river curves past extensive woodlands of pine, cypress and juniper cedar while numerous sandbars offer ideal rest spots. The sparkling waters are often tinted with yellow or red-black tannins from swamp vegetation, a natural occurrence. Seepage slopes, flatwoods and wet prairie areas within the river basin are home to rare pitcher plants. The river and its tributaries also support several species of rare and imperiled fish.

## The Paddling Experience

This easy 15.4-mile paddling trail is a classic Panhandle river with tea-colored water cradled by white sandbars. The river is narrow, twisting and fast-moving in the upper stretches then becomes wider and slower as it nears Perdido Bay. The popular 4-mile segment from Fillingim Landing to The Pipes Landing offers a short day trip with scenic beauty, little development and is perfect for beginners. From the Pipes Landing to Sand Landing, the river becomes wider and much slower, with fewer sandbars. Several of the original private access points along the river are no longer available or they do not allow parking, such as the Barrineau Park Bridge. [Water levels](#) are best between 2-6 feet. Above 7 feet some of the dirt roads leading to river access are impassable and the river is dangerous as it nears flood stage of 13 feet.

Try your luck [fishing](#) on the Perdido River which can be very productive, especially during the warm weather months. Largemouth bass, chain pickerel, bluegill, and longear sunfish are eager to strike many types of baits and lures.

## Access Points

### #1, Start of the Trail, Fillingim Landing

The [launch site](#) is a series of wide steps leading to the water. This is a popular local swimming area and parking may be full on warm weekends and holidays. *From I-10, travel north on US 29 (exit 10) about 13.5 miles. Turn left (west) on CR-196 and travel 3 miles to a crossroad marked by a church. Turn left (south) on CR 97 (Jack's Branch Rd.) and travel less than a half mile. Turn right at Fillingim Landing Road and travel about a quarter of a mile to the river.*

### #2, Mile 0.8, Otto Hill

Otto Hill Group Campsite includes a portable toilet, pavilion, and access to the bank of the river. This campsite is available by [reservation](#) only. Otto Hill is subject to flooding at certain times of the year and may be closed temporarily during times of high water. *From I-10, travel north on US 29 (exit 10) about 8.3 miles and turn left on (west) on Muscogee Rd. Around 2.6 miles the road forks and becomes Jack's Branch Rd (CR97), continue about 4.8 miles to the entrance on the left on top of a hill.*





# Perdido River Paddling Trail Guide

## #3, Mile 4.3, The Pipes Landing



The Pipes offers a shallow, sandy beach for launching. The river floods the road with water levels near 7 feet; use this access when water levels are less than 6 foot. *From I-10, travel north on US 29 (exit 10) about 8 miles to Cantonment traffic signal at CR 84 (Muscoogie Road). Turn left (west) for 2.6 miles to CR 97, (Jack's Branch Road), and travel northwest on Jack's Branch Road (Muscoogie curves to the left). Travel 3 miles and take a left onto Old Bridge Road, a neighborhood street. Go to the end of Old Bridge Road and continue on the dirt road to the river. It is a total of 1.1 miles from Jack's Branch Road to the river.*

## #4, Mile 6.4, Adventures Unlimited (private)



Customers of [Adventures Unlimited](#) outfitters can take out at their location on the river 2 miles below The Pipes Landing. Rentals and shuttling are available, there is a fee to launch. *Take I-10 to exit #5 (90A). Turn right (or west) on 90A, go 3 miles to CR99. Turn right on 99, go 5 miles to CR 184. Cross 184, turn left on River Annex Road, located about 1/2 mile on the left.*

## #5, Mile 15.4, End of the Trail, Sand Landing



The unpaved Sand Landing Road off Highway 90 may be missing a street sign, so look for a Perdido River Wildlife Management Area sign just past the weigh station and power lines on the right. This is the entrance to the road. *Take I-10 West out of Pensacola to Alt US90/SR10 (Exit 5). Take Alt US90/SR10 west which merges into US90 just west of the town of Beulah. Take US90 west to Sand Landing Road and take a right (north). Travel about a mile and take a left at the sign for the landing.*

## #6, Mile 18.0, (optional take out), Wilson B. Robertson Boat Launch, US 90 Bridge



Opened in 2016, a new park with several types of access is located at the US 90 Bridge. An accessible hand-launch option and a multi-laned concrete ramp are available along with a long floating dock to allow visitors to tie up and enjoy a picnic under the shady pavilions. Just adjacent on the northeast side of the US 90 Bridge is Ruby's Fish Camp, a colorful local stop that charges a small fee for launching.

## Outfitters and Shuttle Service

[Adventures Unlimited](#), (850) 968-5529, 160 River Annex Rd., Cantonment, 32533



Perdido Boat Ramp, US 90, Liz Sparks



Adventures Unlimited



Fillingham Landing, Steve Brown