

# Petroleum Discharges in the Port of Tampa



**Chuck Heintz, P.G. & Charles Dowman, P.G.**

Petroleum Cleanup/Hillsborough County

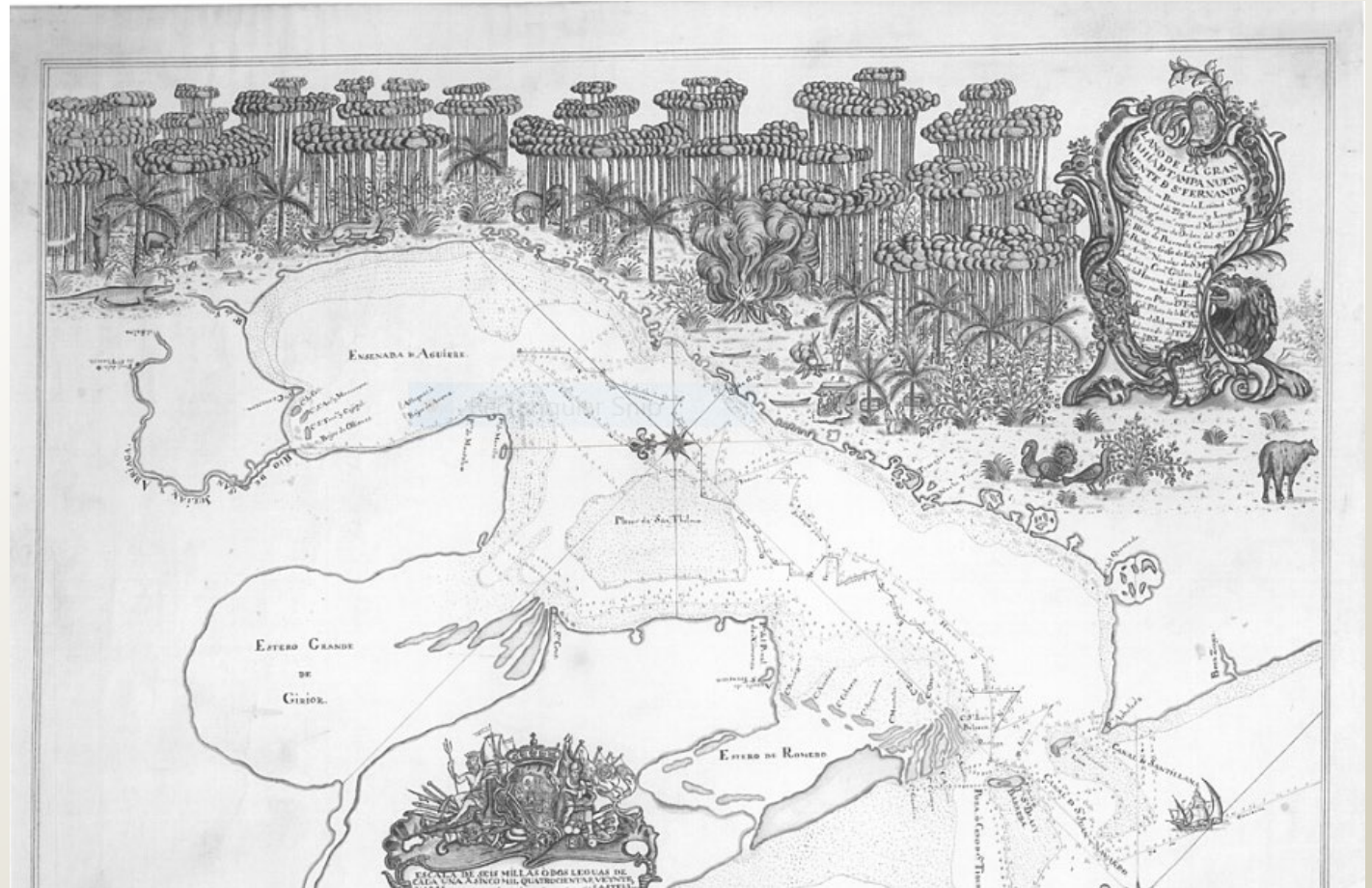
Environmental Protection Commission  
of Hillsborough County

April 2026

# 1757 Map of Tampa Bay



- Spanish ship Captain Don Francisco Maria Celi's 1757 map of Tampa Bay.
- Spain was surveying the Tampa Bay area for pine trees to produce ship masts for the Spanish navy and merchant vessels.



# Old Port Tampa



- Southwest Interbay peninsula shore on old Tampa Bay – January 1898.
- Port still exists today.
- Location where United States (U.S.) soldiers embarked for Cuba during the Spanish-American war in 1898.



Source:

<https://digitalcommons.usf.edu/wehman/25/>

# Port Tampa and Old Port Tampa



Port Tampa



Old Port Tampa



Source: Google Earth

# Port Tampa - 1912



- Oblique view of
  - Bayshore
  - Downtown Tampa
  - Seddon Island
  - “New” Port of Tampa (AKA Hooker’s Point)



Source: Barnes Crosby Company

# Port of Tampa Overview



- The Port of Tampa has over 34.6 billion in economic impact.
- Supports more than 192 thousand jobs.
- 33 million tons of cargo move through the port each year (Port of Tampa Bay)



## Our Mission

Port Tampa Bay will be recognized as a leader in the maritime industry.

Port Tampa Bay will have a customer driven, strategic business focus in working with stakeholders to develop and manage marine terminals and supporting infrastructure for the benefit of the regional economy. Port Tampa Bay will employ sound financial, business and environmental management practices in fulfilling its mission.

Source: Port Tampa Bay

# The Port of Tampa Overview - Continued

- Contains bulk storage tank terminal facilities.
  - Cargo Facilities
  - Recycling Facilities
  - City of Tampa Advanced Wastewater Treatment Plant
  - Ship Repair Facilities



Source: EPC Tanks Compliance  
File (FACID 298625797)

# The Port of Tampa Overview Continued

- Contains bulk storage tank terminal facilities.
  - Petroleum & Chemical Transport Pipelines
  - Cruise Ship Facilities
  - Tank Truck Traffic
  - Much More!!



Source: EPC Tanks Compliance  
File (FACID 298625797)

# Former Trademark Metals Recycling (DEP FAC ID: 299063995)



- Petroleum contaminated soil excavation in foreground.
- Piles of scrap recycling debris in background.
- Other potential sources of contamination at this site.
  - Caution was needed when the confirmatory soil samples were performed.



Source: EPC Petroleum Cleanup File (FACID 299063995)

# Lehman St Spill (DEP FAC ID: 299801026)



- Discharge Date: 8/3/1996.
- Cause: 8,000-gallon discharge from a rolled over tanker truck.
- Site was referred by the DEP Bureau of Emergency Response (BER).



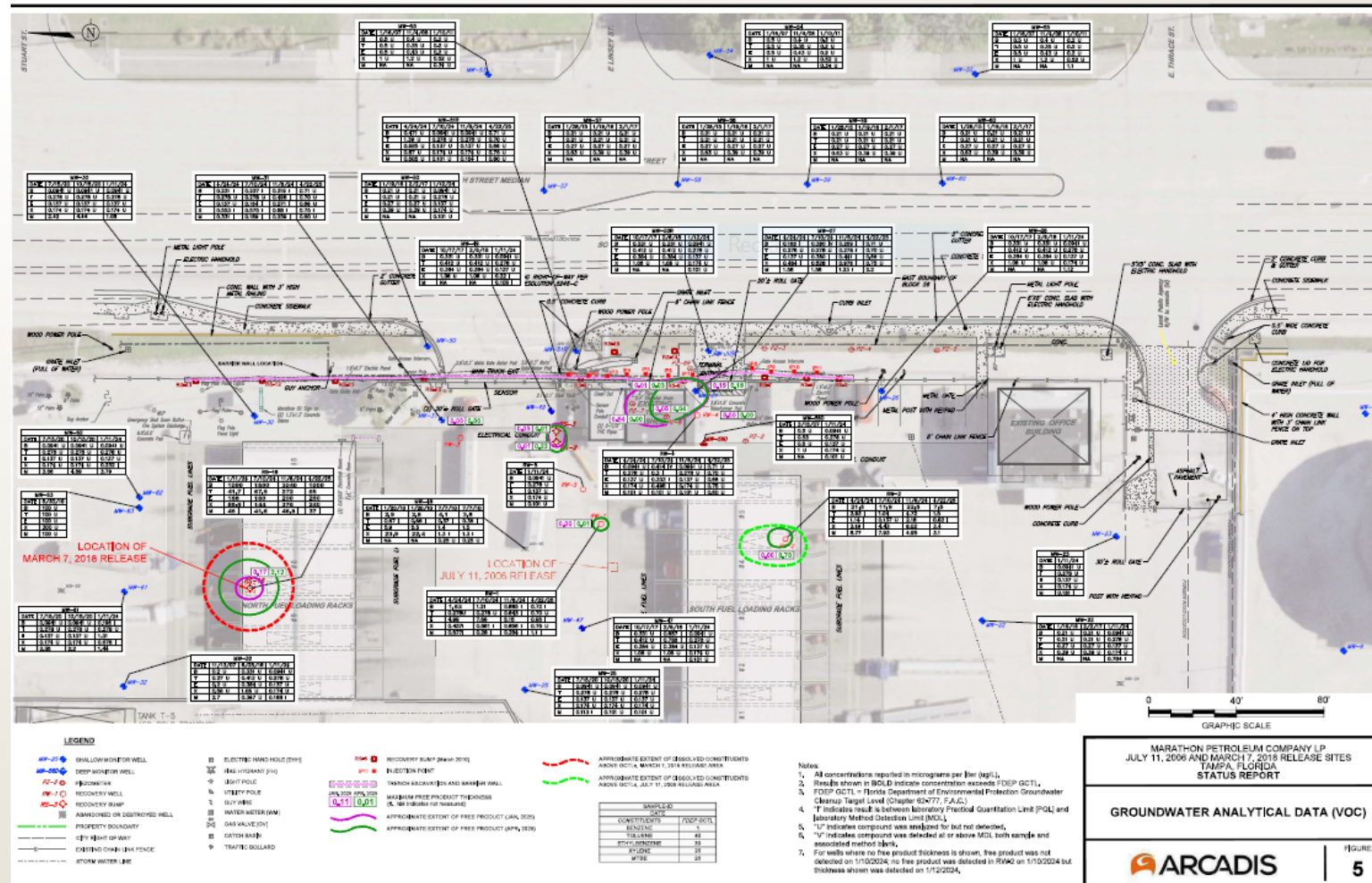
Source: DEP Contamination Locator Map (CLM)



# MPLX Terminals LLC – Tampa TRMNL (DEP FAC ID: 298837986)



- Multiple program and non-program petroleum discharges.
- The 7/11/2006 & 3/7/2018 Non-program discharges occurred in the loading racks.
- Free product recovery is ongoing in this area.



Source: Arcadis (FACID 298837986)

# Howard F Curren AWT Plant (DEP FAC ID: 298624817)



- Multiple petroleum discharges at this facility have been closed.
- However, there has been a recent 7/14/2025 discharge from the spill bucket of a 12,000-gallon diesel fuel Underground Storage Tank (UST) that is being addressed.



Source: DEP CLM

# Brownfield Area No. BF290702000



- Tampa Electric Co Hookers Point Station (DEP FAC ID: 298839203)
  - 7 discharges
- Tampa Electric Co (DEP FAC ID: 298625562)
  - 3 discharges

Source: EPCHC Storage Tank Closure Inspection 1/16/2003 (FACID 298839203)



# Brownfield Area No. BF290702000 Continued



- Some discharges were closed after source removal. Remaining discharges included in Brownfield Area No. BF290702000 Conditional Closure



Source: EPCHC Storage Tank  
Closure Inspection 1/16/2003  
(FACID 298839203)

# Brownfield Conditional Closure



## COMMISSION

Mariella Smith CHAIR  
Pat Kemp VICE-CHAIR  
Harry Cohen  
Ken Hagan  
Gwendolyn "Gwen" W. Myers  
Kimberly Overman  
Stacy White



## DIRECTORS

Janet D. Lorton EXECUTIVE DIRECTOR  
Elaine S. DeLeon ADMIN DIVISION  
Sam Elrabi, P.E. WATER DIVISION  
Rick Murati, Esq. LEGAL DEPT  
Reginald Sanford, MPH AIR DIVISION  
Steffanie L. Wickham WASTE DIVISION  
Sterlin Woodard, P.E. WETLANDS DIVISION

October 6, 2022

VIA EMAIL TO: Dennis Manelli, Hendry Marine Corporation [dmanelli@hendrymarine.com](mailto:dmanelli@hendrymarine.com)

Person Responsible for Brownfield Site Rehabilitation (PRFBSR)

Mr. Dennis Manelli, General Counsel and Chief Financial Officer  
Hendry Marine Industries, Inc.  
1800 Hemlock Street  
Tampa, FL 33605

Subject: Conditional Site Rehabilitation Completion Order (CSRCO)  
Former TECO Hooker's Point Power Plant/Hendry Marine Brownfield Site  
1650 Hemlock Street, Tampa, FL 33605, Hillsborough County  
Brownfield Site No. BF290702001, Brownfield Area No. BF290702000  
Facility ID Nos. 298625562 and 298839203  
FDEP Site No. COM\_293515/ ERIC\_13678  
Folio No. 198755-1100

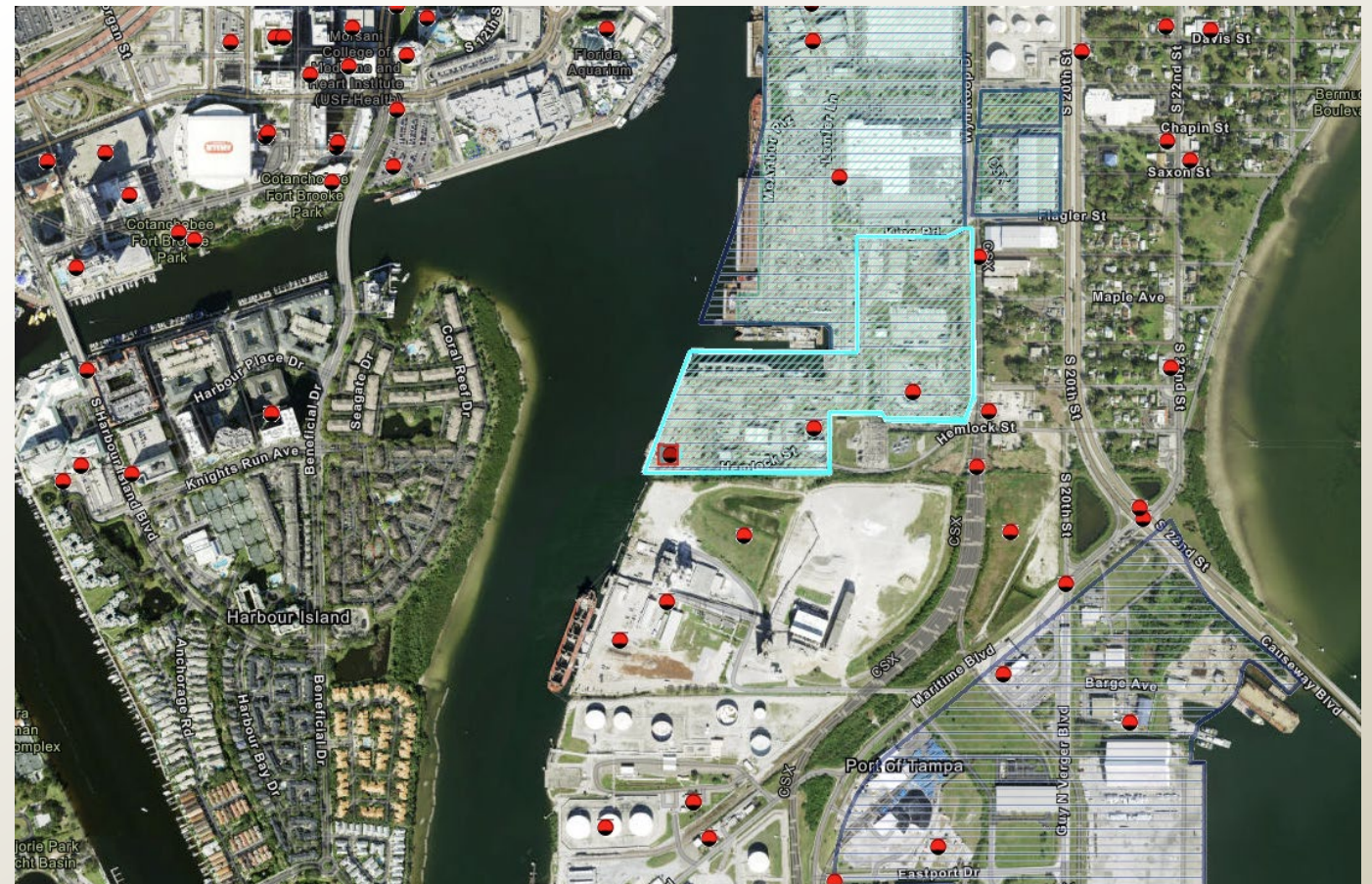
Dear Mr. Manelli:

The Environmental Protection Commission of Hillsborough County (EPC), acting under the authority of Florida Statutes Subsection 376.80(9) as delegated by the Florida Department of Environmental Protection (FDEP) for the Florida Brownfields program, has reviewed the Site Rehabilitation Completion Report (SRCR) dated June 23, 2016 for the 31.97-acre Former TECO Hooker's Point Power Plant Brownfield Site No. BF290702001. Maps showing the location of the contaminated site for which this Order is being issued are attached as Exhibits 1 and 2 and are incorporated by reference herein. Failure to comply with the provisions of this order is a violation of Section 376.302, Florida Statutes (F.S.). The Brownfield Site is identified as Folio No. 198755-1100.

The contamination at the Brownfield Site is attributed to operation of the former TECO Hookers Point Power Plant and from petroleum discharges from the Citgo terminal (Facility ID No. 298625562, discharges 09/01/1987, 05/05/1989 and 04/15/1990) and the TECO Day Tank Area (Facility ID No. 298839203, discharge 06/26/1994) which were addressed in the Brownfield site rehabilitation. Site assessment activities documented arsenic and Polynuclear Aromatic Hydrocarbons (PAH) compounds in soils, and vanadium, naphthalene, acenaphthene, 1- and 2-methylnaphthalene, and benzo(a)anthracene in groundwater. A Brownfields Site Rehabilitation Agreement (BSRA) was executed by Hendry Corporation (now Hendry Marine Industries, Inc., "Hendry Marine") and EPC on August 8, 2008 to address this contamination. The SRCR is supported by earlier submittals, prepared pursuant to the

*Environmental Excellence in a Changing World*

Environmental Protection Commission - Roger P. Stewart Center  
3629 Queen Palm Drive, Tampa, FL 33619 - (813) 627-2600 - [www.epchc.org](http://www.epchc.org)



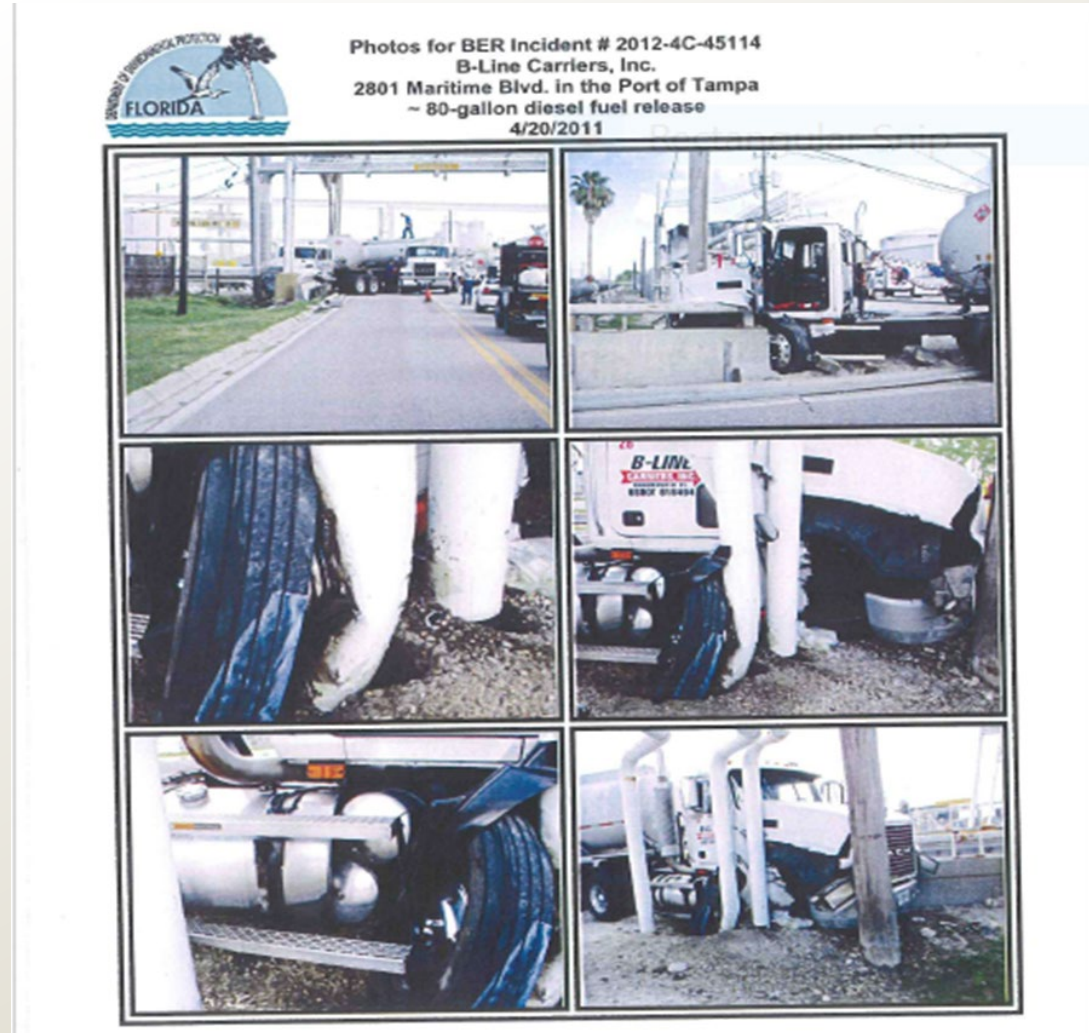
Source: DEP Map Direct

# B-Line Carriers Truck Spill (DEP FAC ID: 299813498)



- On 4/20/2011, a tanker truck crashed into a bollard.
- The tanker truck saddle tank ruptured, spilling around 80 gallons of diesel fuel.
  - BER No. 11-4C-45114.

Source: OCULUS



# B-Line Carriers Truck Spill (DEP FAC ID: 299813498) - Continued



- On 2/12/2013, Kinder Morgan's Pipeline released approximately 113 gallons of ethanol denatured with gasoline in the same location.
- Both discharges were referred by the DEP BER.



Source: OCULUS (FACID 299813498)

# B-Line Carriers Truck Spill (DEP FAC ID: 299813498) Continued



- In addition to the two petroleum discharges, a historical release of caustic soda (50% sodium hydroxide) previously migrated from the facility located to the east.
- Two petroleum discharges have commingled with historic caustic soda release.



Source: EPC Petroleum  
Cleanup File (FACID  
299813498)

# B-Line Carriers Truck Spill (FAC ID: 299813498) - Continued



- Lawyers requested meeting with DEP and EPC.
- DEP determined two petroleum discharges can be handled separately.
- Working on conditionally closure for 4/20/2011 with property owner.

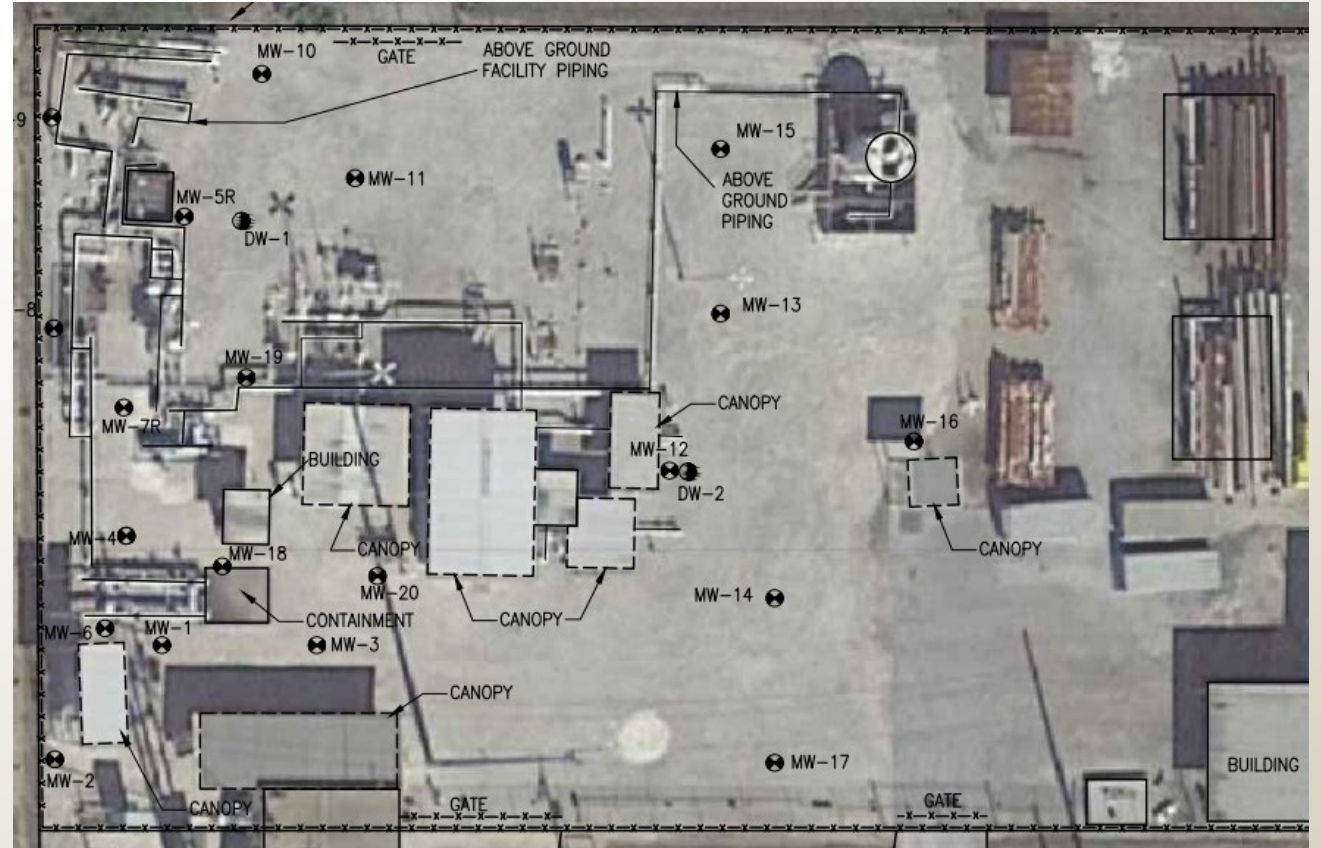


Source: EPC Petroleum  
Cleanup File (FACID  
299813498)

# Central FL Pipeline-Hemlock Pump St. (DEP FAC ID: 299816247)



- Four (4) Petroleum discharges have occurred.
- This is a pipeline pump station, not a tank facility.
- The facility is regulated by the United States Department of Transportation (US DOT).
- The site is undergoing active remediation.

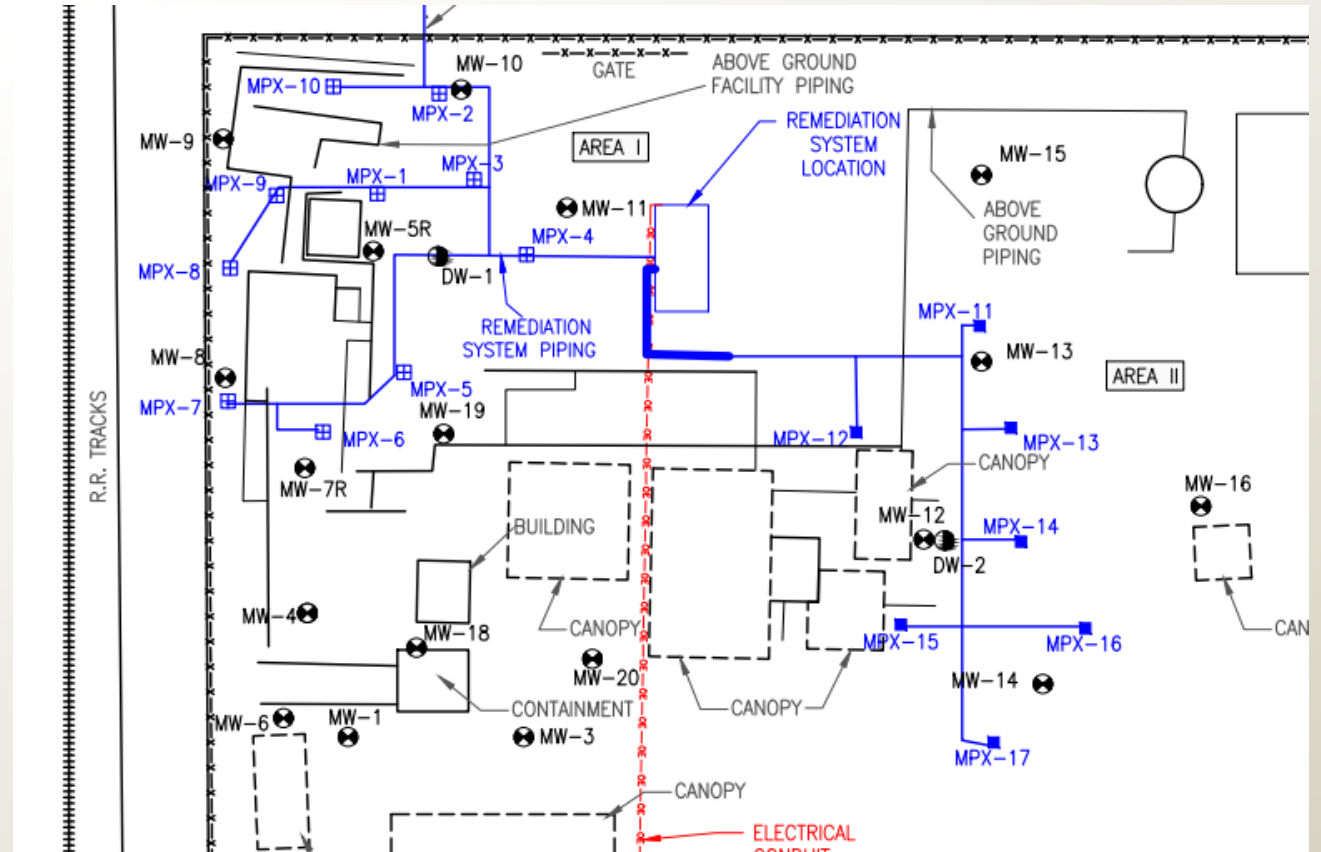


Source: Universal Solutions, Inc. (FACID 299816247)

# Central FL Pipeline-Hemlock Pump St. (FDEP FAC ID: 299816247) - Continued



- Multi-phase extraction (MPX) remediation system was flooded and damaged by Hurricane Milton in 2024.
- System has been reconstructed and is operational.

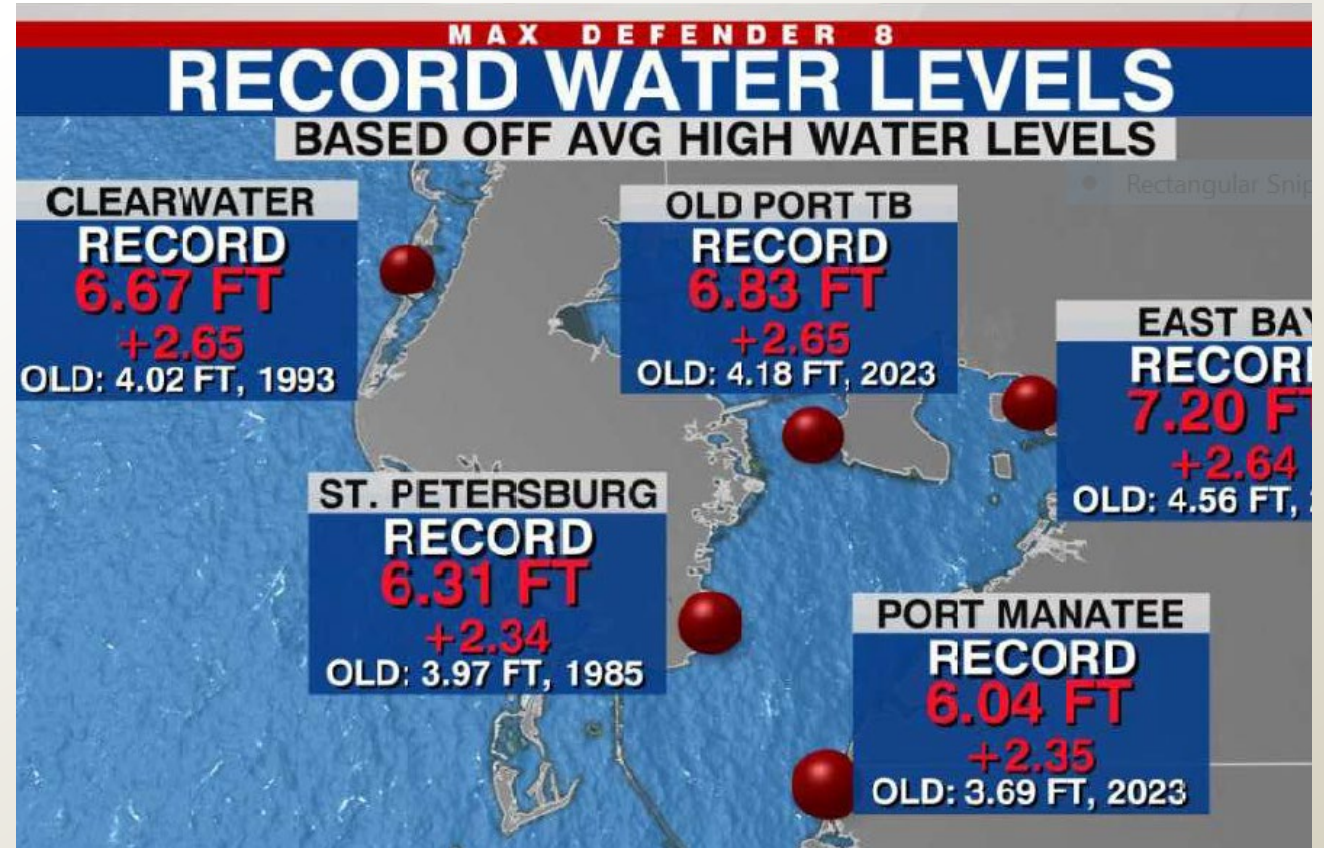


Source: Universal Solutions, Inc. (FACID 299816247)

# Hurricane Helene



- Hurricane Helene occurred 9/26-9/27/2024.
- Tampa Bay experienced a record storm surge.
- Surge at the Port of Tampa was approximately 7 feet above mean higher high water (MHHW).



Source: Channel 8 Weather (WFLA)

# Marathon Petro Co LLC-Tampa (DEP FAC ID: 298837986)



Source: EPCHC Environmental Concern Website Result  
#15435493 (FACID 298837986)

# Storm Surge



Source:  
NOAA Sea  
Level Rise  
Viewer



# Residential Zoning



- Davis Islands, Seddon Island, and Hooker's Point were constructed in the 1910's and 1920's using dredge spoils.
- Phosphate loading and cloud of dust became an issue to residences on Davis Islands.
- By the 1970's, phosphate operations creased.



Source: HCPLC The History of Tampa's Port, 1870 USGS Map

# Residential Zoning Continued



- Seddon Island was rezoned to residential and renamed to Harbor Island.



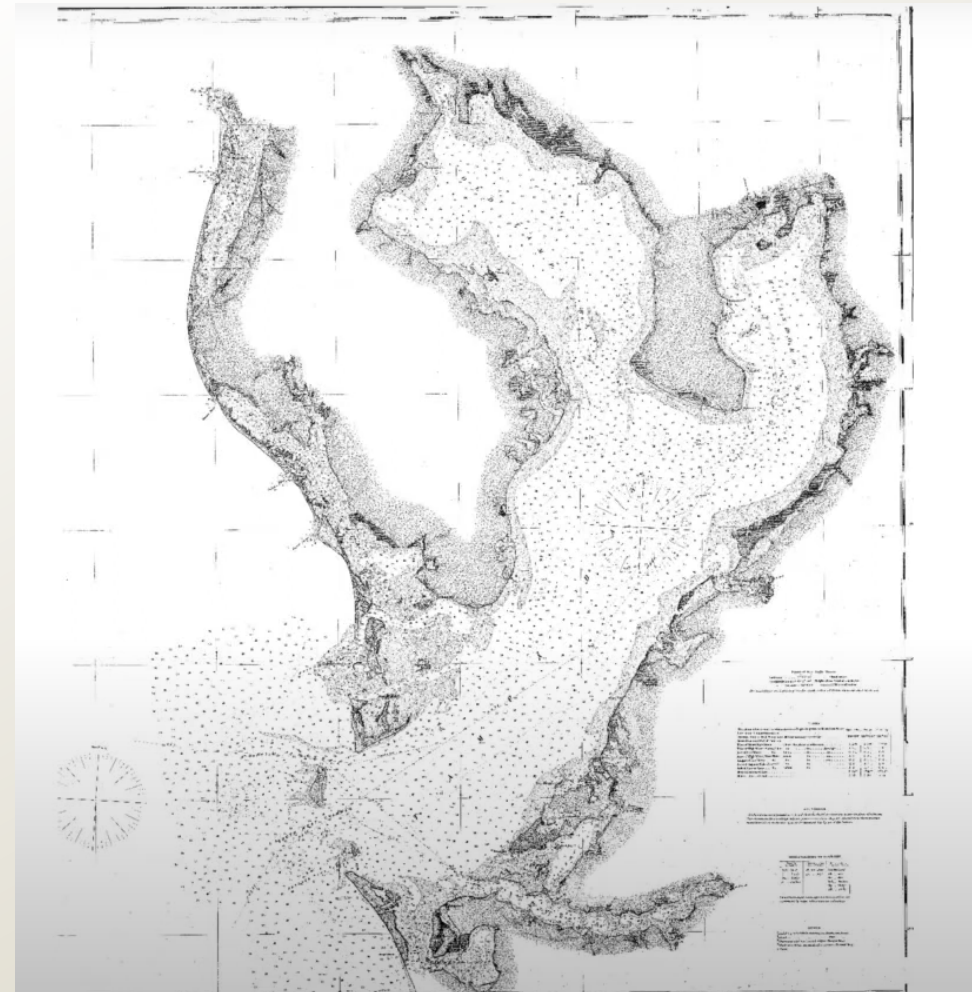
Source: HCPLC The History of Tampa's Port, 1870 USGS Map

# Geology



- Dredge material used to fill in shoreline and build bulkheads and wharf area.
- Fine grain sands grading to clayey sand with shell fragments in the upper 12 feet.
- Depth to water: 1 to 2 feet
- Tidal influence
- Lack of unsaturated zone

Source: HCPLC The History of Tampa's Port, Aerial Circa 1960s



# Low Scored Sites



- Previous LSSI and LSA



Source: EPCHC Storage Tank Compliance Inspection  
(11/14/2022; FACID 299100107)

# Typical Discharges



Discharges may occur within a lined containment area, although drainage systems may be present.



Source: EPCHC Storage Tank Compliance Inspection  
(7/9/2003; FACID 298629070)



# Challenges – Continued



Old Port Tampa in 1971 vs 2018



Source: Hillsborough County Appraiser (left) and Google Earth (right)

# New Development



New Field Erected  
Aboveground Tank  
Construction



Source: EPCHC Storage Tank  
Compliance Inspection  
(1/15/2003; FACID  
299100083)

# Port of Tampa – Energy Gateway



- The Port of Tampa is the delivery point for 16-million tons of petroleum related products annually.
- The Port of Tampa also supplies gasoline and aviation jet fuel through pipelines to major airports.
- 40% of Florida's Petroleum is moved through the port.



Source: [Port Tampa](#)

# Waterfront Soccer Stadium



Source: [The Beck Group/Tampa Bay Sun FC](#)

# Rezoning Application – Waterfront Development



Current



Proposed

Source: [Map Direct](#)

# Bon Voyage!



Source: Facebook

# THANK YOU



## **Chuck Heintz, P.G.**

Senior Hydrologist  
Petroleum Cleanup/Waste Division

Environmental Protection Commission  
of Hillsborough County

## **Contact Information:**

813-627-2600 ext. 1302  
Heintz@epchc.org

## **Charles Dowman, P.G.**

Senior Hydrologist  
Petroleum Cleanup/Waste Division

Environmental Protection Commission  
of Hillsborough County

## **Contact Information:**

813-627-2600 ext. 1242  
Dowmanc@epchc.org