

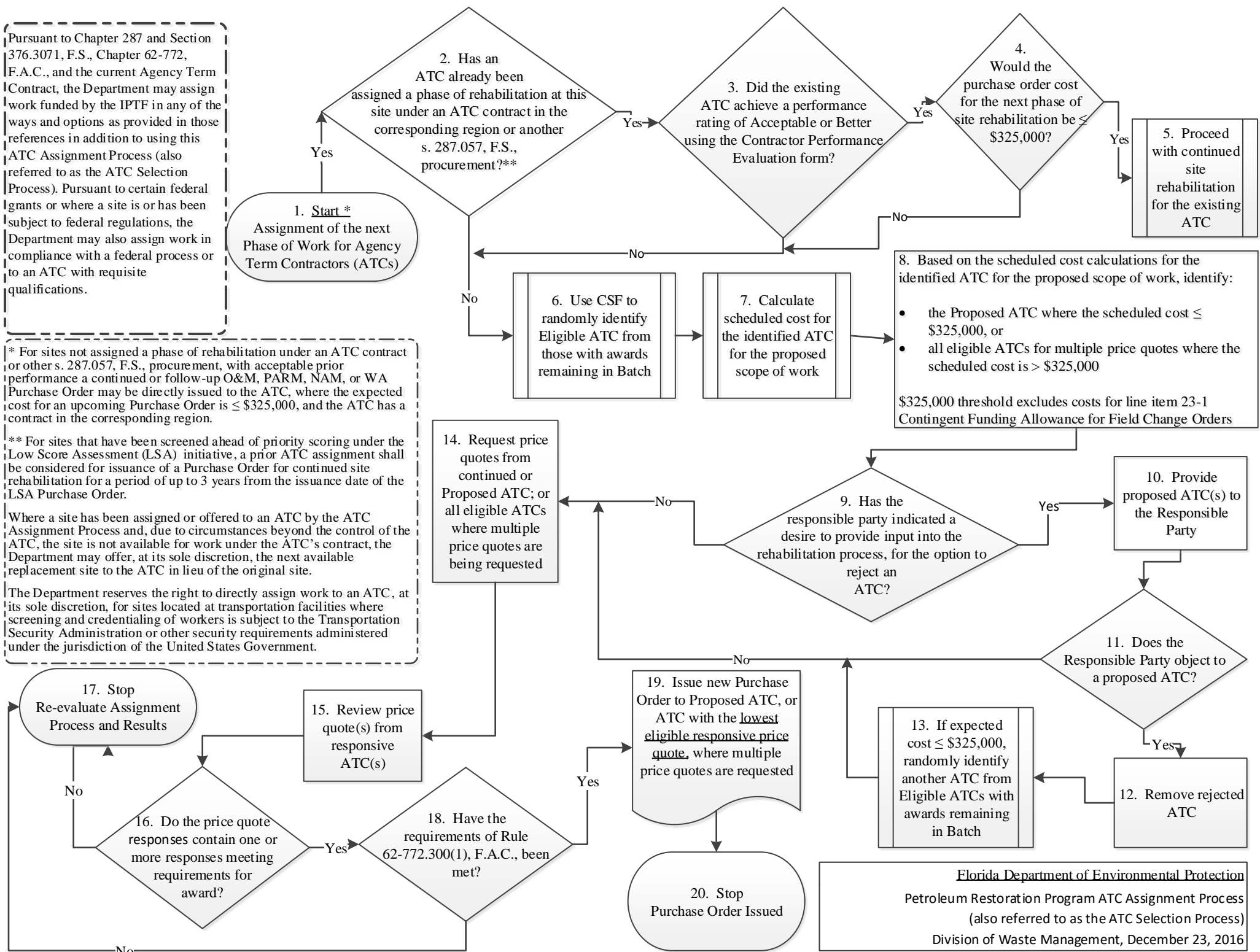
Pursuant to Chapter 287 and Section 376.3071, F.S., Chapter 62-772, F.A.C., and the current Agency Term Contract, the Department may assign work funded by the IPTF in any of the ways and options as provided in those references in addition to using this ATC Assignment Process (also referred to as the ATC Selection Process). Pursuant to certain federal grants or where a site is or has been subject to federal regulations, the Department may also assign work in compliance with a federal process or to an ATC with requisite qualifications.

* For sites not assigned a phase of rehabilitation under an ATC contract or other s. 287.057, F.S., procurement, with acceptable prior performance a continued or follow-up O&M, PARM, NAM, or WA Purchase Order may be directly issued to the ATC, where the expected cost for an upcoming Purchase Order is ≤ \$325,000, and the ATC has a contract in the corresponding region.

** For sites that have been screened ahead of priority scoring under the Low Score Assessment (LSA) initiative, a prior ATC assignment shall be considered for issuance of a Purchase Order for continued site rehabilitation for a period of up to 3 years from the issuance date of the LSA Purchase Order.

Where a site has been assigned or offered to an ATC by the ATC Assignment Process and, due to circumstances beyond the control of the ATC, the site is not available for work under the ATC's contract, the Department may offer, at its sole discretion, the next available replacement site to the ATC in lieu of the original site.

The Department reserves the right to directly assign work to an ATC, at its sole discretion, for sites located at transportation facilities where screening and credentialing of workers is subject to the Transportation Security Administration or other security requirements administered under the jurisdiction of the United States Government.



Contractor Selection
Formula (CSF)

$$= ITNRank^a + CRSRank^b + CPERank^c$$

Where:

ITNRank = The rank of eligible vendors within a given contract region with respect to the Invitation to Negotiate (ITN) performance scores determined during the initial agency term contractor solicitation evaluations (Solicitation No, 2014004C). These scores do not include a rate component. For ranking purposes of the ITN performance scores (performance portion only) the highest evaluation score is rank = 1, with increasingly lower scores ranked to the nth rank, where n is the number of eligible contracted PRP vendors in the region, accounting for ITNRank ties as needed. The ITNRank is raised to the power of a, where the exponent a = 1.5.

CRSRank = The rank of eligible vendors within a given contract region based on the sum of the product of each vendor's Contract Rate Schedule (CRS) item price times the item's pricing weight factor. The resulting lowest total weighted CRS price is ranked as 1, with increasingly higher total weighted prices ranked to the nth rank, where n is the number of eligible contracted PRP vendors in the region, accounting for CRSRank ties as needed. The CRSRank is to be raised to the power b, where the exponent b = 2.0.

CPERank = The rank of eligible contractors in a given contract region based on their Contractor Performance Evaluations (CPE) generated by the department. The resulting highest performance score is ranked as 1, with increasingly lower performance scores ranked to the nth rank, where n is the number of eligible contracted PRP vendors in the region, accounting for CPERank ties as needed. The CPERank is to be raised to the power c, where the exponent c = 2.0. (An adequate pool of contractor performance evaluations have been completed. On the effective date of this PRP ATC Assignment Process, the CPERank will reflect completed evaluation data and shall no longer be the same for all ATCs.)

Notes:

A) It is expected that a uniform retainage rate (e.g., 5%) would be initially applied during invoice payments for each contracted purchase order, in lieu of requiring that a performance bond be obtained. The retainage rate may be adjusted, up to a maximum of 25%, for a contractor's future purchase orders based on relevant factors such as contractor performance. PRP has adjusted the retainage process for large source removal scopes. ATCs should discuss the retainage options for these with the FDEP site manager.

B) The CSF formula will be calculated at the beginning of an award batch (Batch). During a given Batch, a number of ATC awards will be assigned to each ATC based on the CSF formula results. The CSF calculation results for the eligible contracted PRP vendors in a region will be ordered from low to high and used to calculate the corresponding percentile for the results in ascending order (i.e., low score ~ low percentile). The CSF ranks will be used to identify three groups for allocation of the number of awards per Batch as follows:

<u>CSF Rank Percentile</u>	<u>Number of awards per Batch</u>
≤ 33	3
> 33 and ≤ 67	2
> 67	1

C) Once all the awards per Batch have been assigned or offered, the CSF will be recalculated to generate new CSF scores and ranks for the subsequent Batch, for a given contract region. To identify an ATC during the assignment process, an ATC will be assigned randomly from among the Eligible ATCs with awards remaining in a given Batch.

D) When a Purchase Order is assigned or offered to an ATC, the number of remaining awards per Batch will be reduced accordingly unless the ATC is unable to perform the work due to circumstances beyond the control of the ATC.

Florida Department of Environmental Protection
Petroleum Restoration Program ATC Assignment Process
(also referred to as the ATC Selection Process)
Division of Waste Management, December 23, 2016