



Florida Department of Environmental Protection

SB 536 Study and Report

*Public Workshop
August 20, 2015*





SB 536 (2014)

- Conduct a comprehensive study, in coordination with stakeholders, on the expansion of the beneficial use of reclaimed water, stormwater, & excess surface water.



Reclaimed Water



Surface Water Storage



Specific Requirements

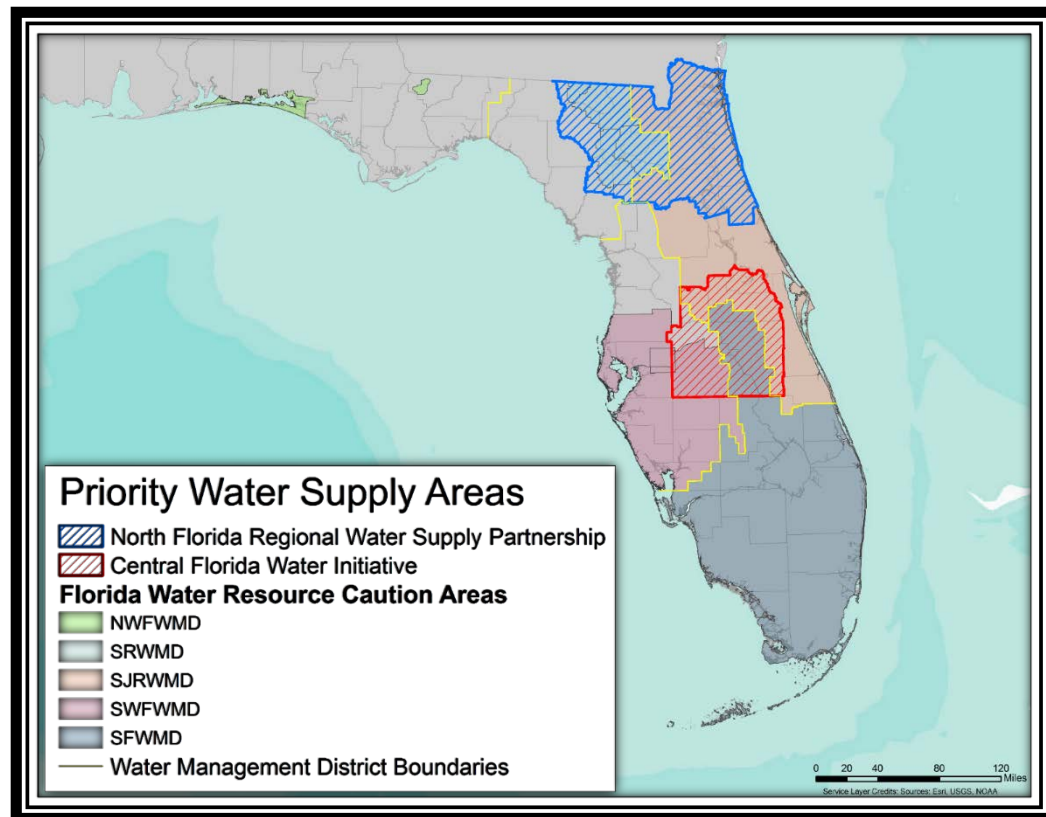


- Identify factors that prohibit or complicate this expansion and recommend how those factors can be mitigated or eliminated.



Specific Requirements

- Identify areas in the state where traditional water supply sources are limited and the use of reclaimed water, stormwater, or excess surface water is necessary.





Specific Requirements

- Determine the feasibility, benefit, and cost estimate needed to construct regional storage features for the beneficial use of reclaimed water, stormwater, and excess surface water.





General Requirements

- Hold a minimum of two public meetings to gather input on the study.
- Provide opportunity for public comment before submitting the report.
- Submit report to Governor, Senate President, Speaker of the House no later than December 1, 2015.



Planning Workgroup Members

DEP

SFWMD

DACS

SJRWMD

DOT

SRWMD

NWFWMD

SWFWMD



SB 536 Definitions

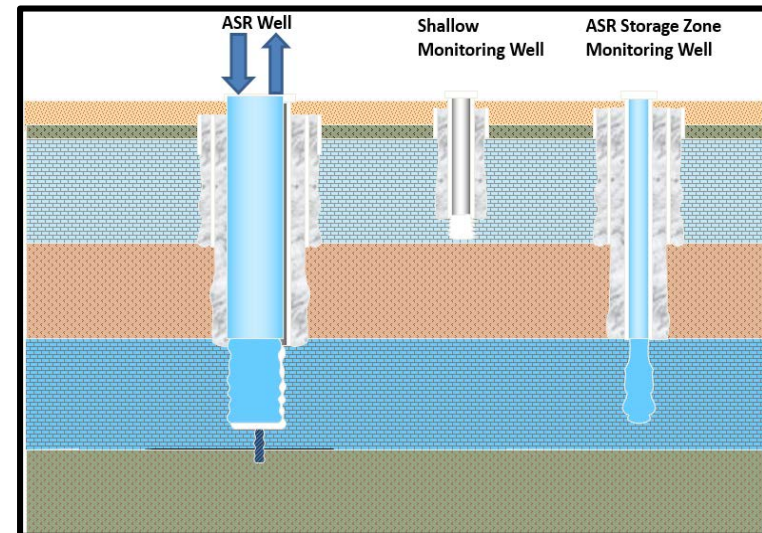
For the purposes of this study:

- **Reclaimed water:** Water that has received at least secondary treatment and basic disinfection and is reused after flowing out of a domestic wastewater treatment facility.
- **Stormwater:** The flow of water which results from, and which occurs immediately following, a rainfall event and which is normally captured in ponds, swales, or similar areas for water quality treatment or flood control.
- **Excess surface water:** Water that is available for withdrawal from rivers, lakes or other water bodies that is in excess of the amount needed to sustain healthy ecological conditions in the water body and downstream waters.



Storage

- Reservoirs
- Aquifer Storage and Recovery
- Aquifer Recharge
- Dispersed Water Management





Public Input Opportunities

- Web-based survey (August, 2014)
- Five public workshops (Fall, 2014)
 - Panama City, Live Oak, Palatka, West Palm Beach, and Brooksville
- Webpage
 - study updates
 - workshop presentations
 - e-mail address to submit comments
- Individual stakeholder meetings
- Teleconference access to agency study working group meetings
- Today's Webinar





SB 536 Study Report Structure

1. Introduction
2. Reclaimed Water
3. Stormwater
4. Excess Surface Water
5. Water Storage
6. Regional Analysis (by WMD)
7. Summary of Recommendations and Conclusions





SB 536 Study Report Content

Chapters 2-5:

- Background
- Regulatory structure
- Current status
- Issues, constraints, Impediments
- Recommendations

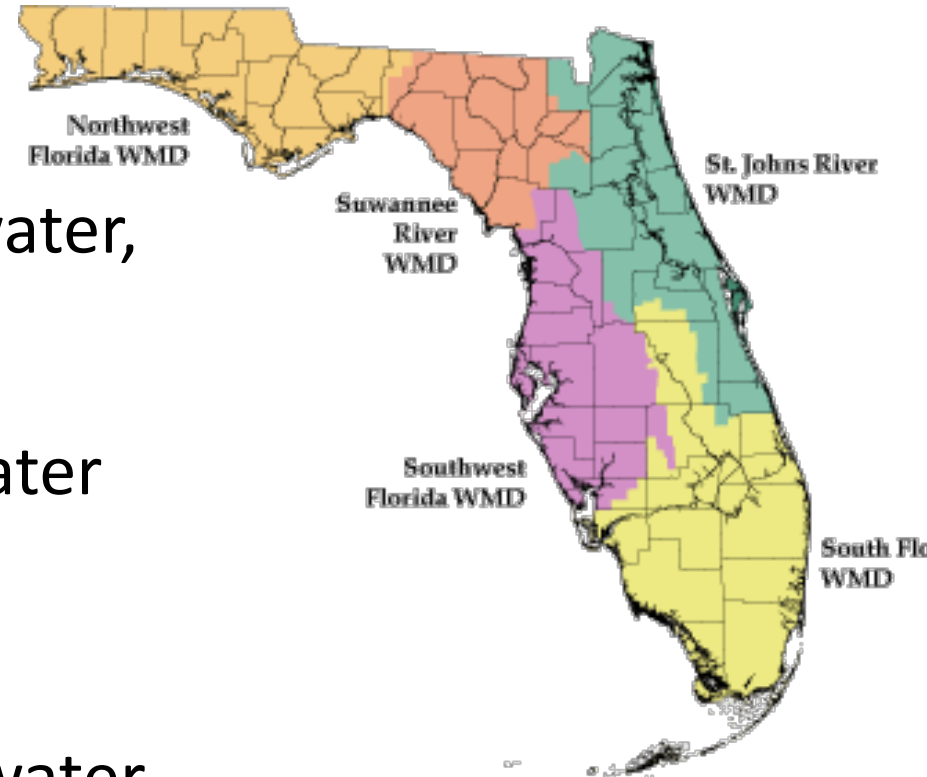




SB 536 Study Report Content

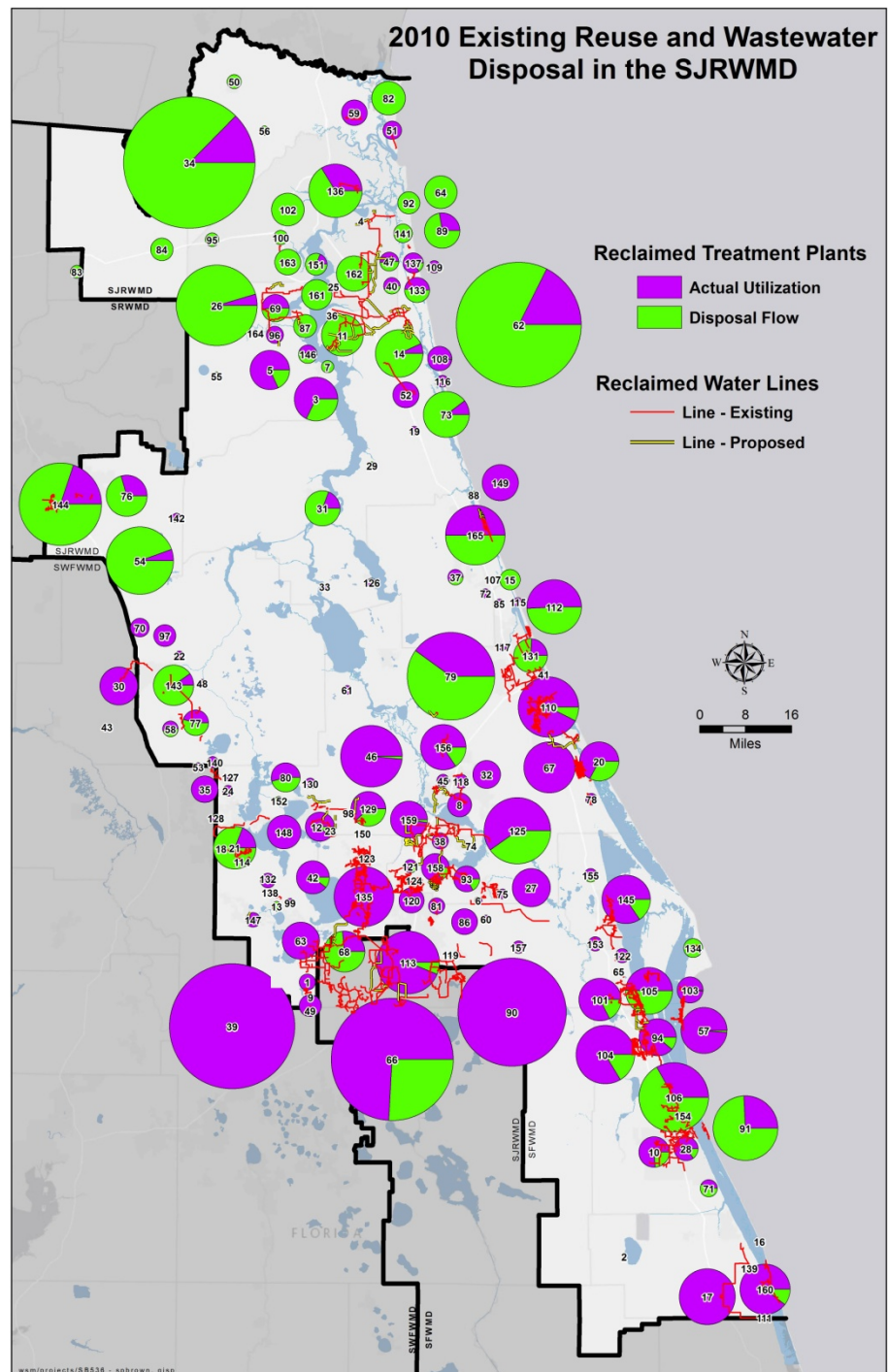
Chapter 6 : Regional Analysis by WMD

- Water Use Overview
- Current use of reclaimed water, excess surface water and stormwater
- Opportunities to Match Water Sources and Needs
 - Areas of regional focus or emphasis
- Graphical presentation of water use and availability

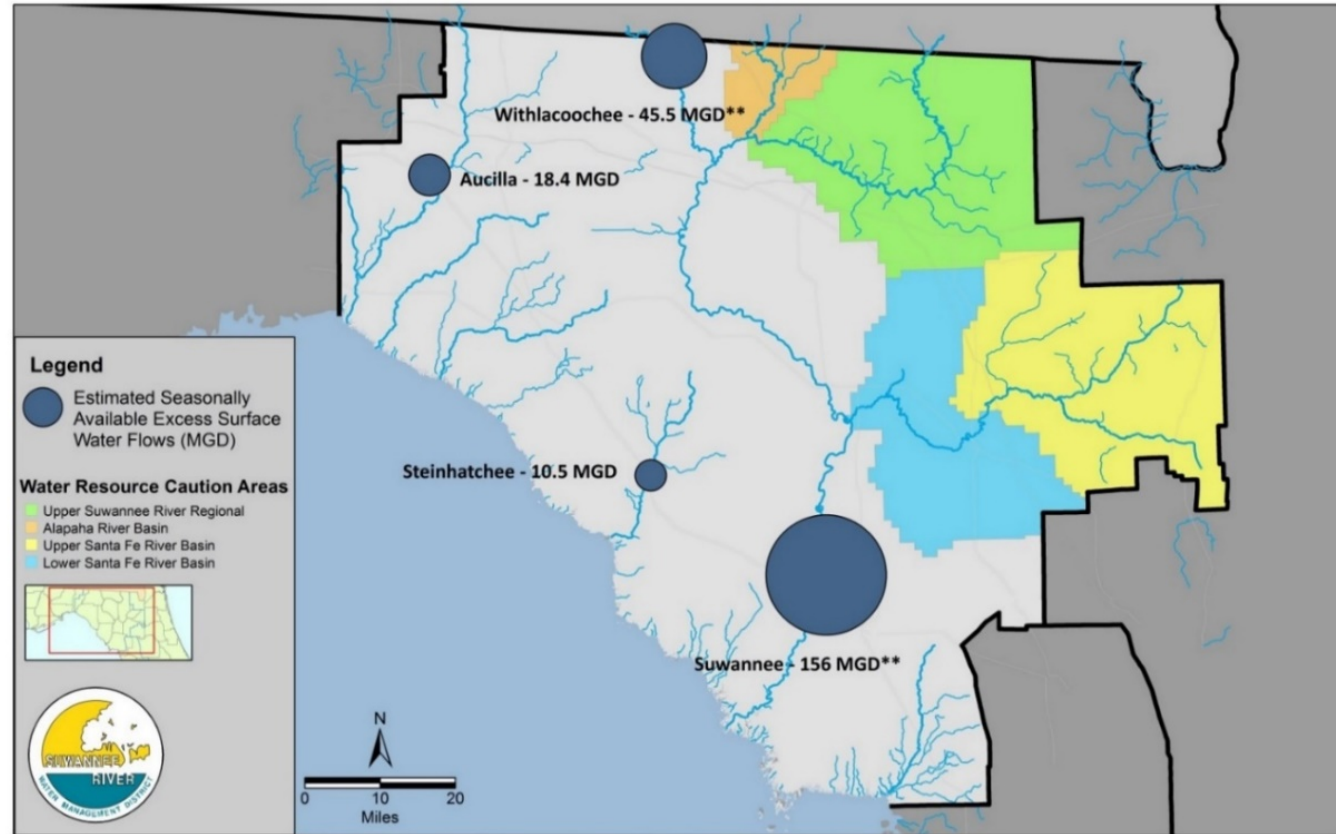




Example: Reclaimed Water Availability



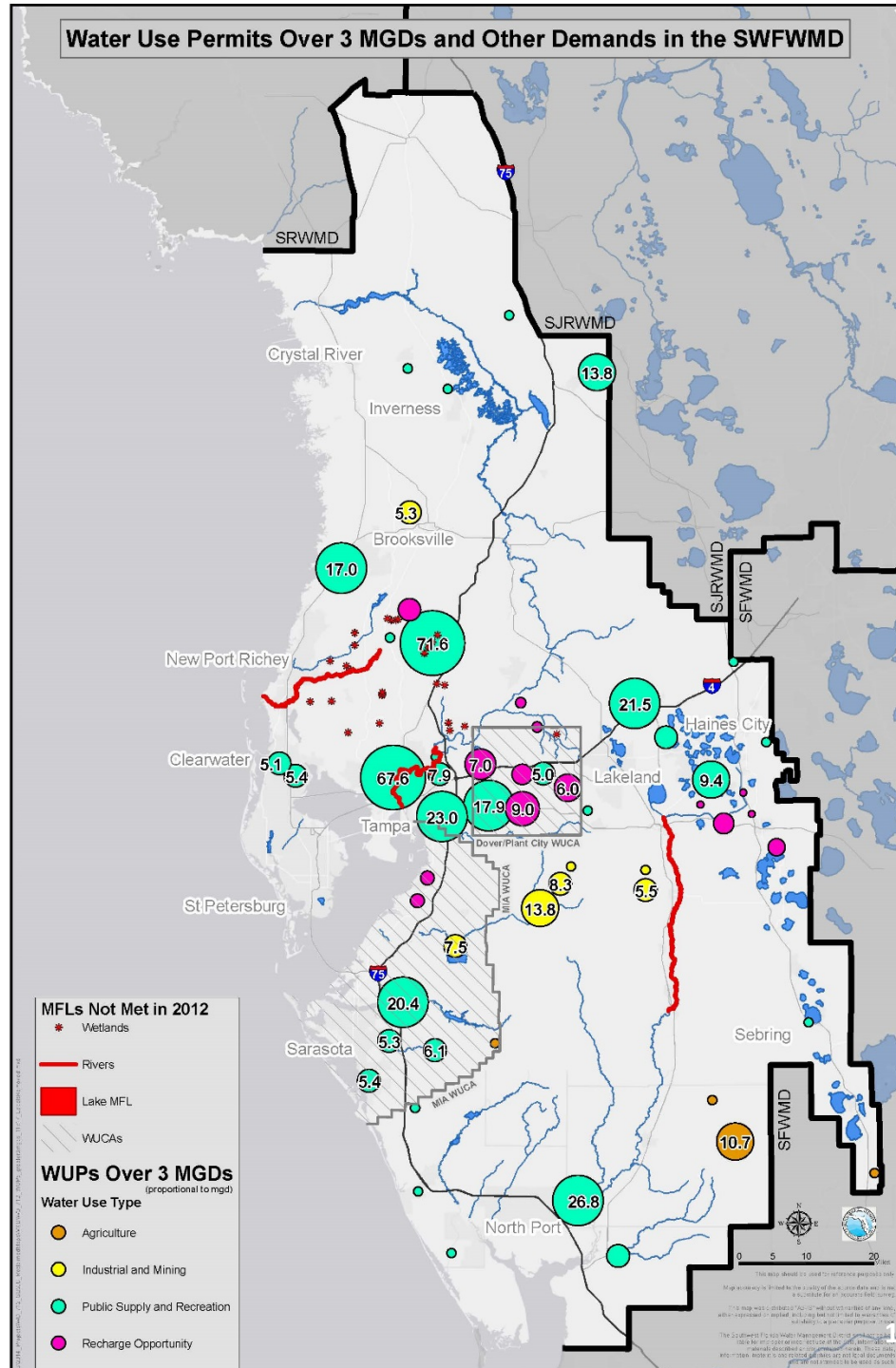
Example: Surface Water Availability





Example: Uses and Needs

- Large WUPs
- MFLs not met





General Findings

- Local/regional water use patterns and hydrogeologic conditions often determine the best water source and storage options.
- No single water source will ensure sustainable water resources.
- Increasing diversification of water supply sources and storage techniques will be key to cost effective, sustainable water supply.





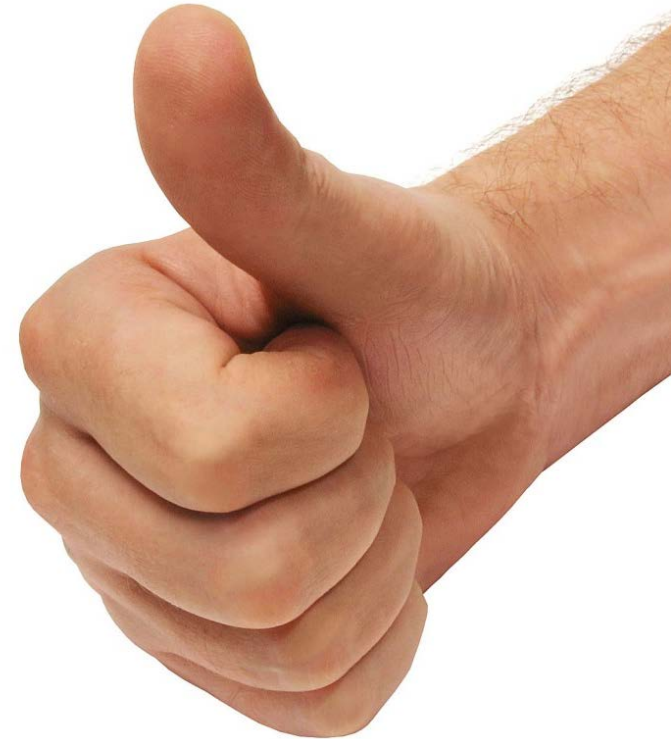
SB 536 Study Recommendations

Recommendations Provided for:

- Reclaimed Water
- Stormwater
- Excess Surface Water
- Storage

Categories of Recommendations:

- Regulatory Changes
- Agency Actions
- Water Supplier Actions
- Funding
- Education/Outreach





Highlights of Draft Recommendations

REGULATORY:

- Revisions to UIC Rules to facilitate ASR and Aquifer Recharge with reclaimed water, stormwater and surface water
- Establish clear rules and procedures for Direct Potable Reuse
- Revisions to ERP rules to encourage and promote stormwater reuse.
- Evaluate revisions to DEP reclaimed water rules to facilitate supplementation with stormwater





Highlights of Draft Recommendations

AGENCY ACTIONS:

- Establish a Stormwater Coordinating Committee (based on model of Reuse Coordinating Committee) with DEP/WMDs/DOT
- Ensure stormwater is considered as part of Regional Water Supply Planning process
- To better identify opportunities, improve coordination between wastewater, ERP (stormwater) and CUP permitting programs





Highlights of Draft Recommendations

Water Supplier Actions:

- Consider establishment of Mandatory Reuse Zones
- Tiered reclaimed water rates, where appropriate
- Fully explore industrial, commercial and institutional sector customers for reclaimed water
- Consider long term agreements with reclaimed water customers





Highlights of Draft Recommendations

FUNDING: Continued alternative water supply funding partnerships are critical.





Highlights of Draft Recommendations

EDUCATION/OUTREACH:

- Conduct statewide education/outreach efforts for reclaimed water, particularly indirect and direct potable reuse
- Develop educational materials on nutrient content and value of reclaimed water for reuse customers
- Continued outreach to agricultural producers on stormwater harvesting





Comments on Draft Report

We appreciate your written comments. Please submit by
September 18, 2015

Email: sb536study@dep.state.fl.us

The Draft of the SB 536 Report is posted at:
<http://www.dep.state.fl.us/water/reuse/study.htm>



Questions?

