



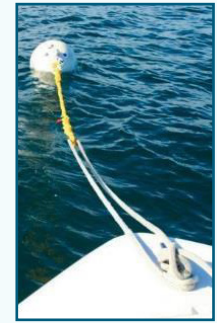
SOUTHEAST FLORIDA Coral Reef Ecosystem Conservation Area MOORING BUOYS



HELP PROTECT FLORIDA'S CORAL REEF
You can help protect Florida's Coral Reef and avoid damage by using free public mooring buoys, anchoring in sand or live boating.

PROPER MOORING BUOY USE

1. Have a crewmember ready with a boat hook and the bowline in hand.
2. Carefully approach the mooring buoy from downwind or downcurrent. Inspect the buoy as you approach and make sure it is in good condition before using.
3. Retrieve the buoy pickup line with the boat hook and pass your bowline through the eye of the pickup line. Put out extra scope and cleat the bowline off securely. It's important to put out extra scope in rough weather.
4. Never tie your boat directly to the mooring buoy pickup line. This could damage your boat or the mooring.
5. To leave the buoy, untie one end of your bowline and let it slip free of the pickup line.



VIEW THE MAP ON YOUR MOBILE DEVICE

Visit your app store to download the free ESRI ArcGIS Field Maps app, then search for and select the "Southeast Florida Coral Reef Locator" map to view. This app uses GPS to show your vessel's live position and displays the nearby location of coral reefs, sand and public mooring buoys.



FLORIDA'S CORAL REEF PROTECTION ACT
Florida's Coral Reef is susceptible to a range of threats, including vessel anchoring and groundings. The direct damage caused by these incidents can cause immediate and long-term injuries to coral reefs.

In 2009, the Florida Legislature passed the Coral Reef Protection Act to increase protection of coral reef resources in state waters offshore Martin, Palm Beach, Broward, Miami-Dade and Monroe counties.

Florida's Coral Reef Protection Act makes it illegal to anchor on or otherwise damage coral reefs along these five Southeast Florida counties. Those responsible for damaging coral reefs may be subject to fines and compensation for damages.

FLORIDA DEPARTMENT OF ENVIRONMENTAL PROTECTION
SOUTHEAST FL CORAL REEF ECOSYSTEM CONSERVATION AREA
FloridaDEP.gov/RIPR/MooringBuoys



SOUTHEAST FLORIDA MOORING BUOYS

Buoys intended for vessels less than 35 feet

MARTIN COUNTY MOORING BUOYS			
SITE NAME	# OF BUOYS	LATITUDE (N)	LONGITUDE (W)
St. Lucie Inlet Preserve State Park	2	27°07.916'	80°08.040'
	2	27°07.257'	80°07.652'
	2	27°06.973'	80°07.794'

For more information or to report a problem concerning the buoys, please call 772-219-1880. St. Lucie Inlet Preserve State Park assumes no liability from the use of any mooring buoy.

PALM BEACH COUNTY MOORING BUOYS			
SITE NAME	# OF BUOYS	LATITUDE (N)	LONGITUDE (W)
Diamondhead Radnor Reef	3	26°54.734'	80°03.485'
Breaker's Reef	16	26°43.192'	80°01.868'
Mar-a-Lago Reef	6	26°41.052'	80°01.854'
Boca Raton Patch Reef	10	26°20.606'	80°03.906'

For more information or to report a problem concerning the buoys, please call 561-233-2400. Palm Beach County and the Florida Fish and Wildlife Conservation Commission assume no liability from the use of any mooring buoy.

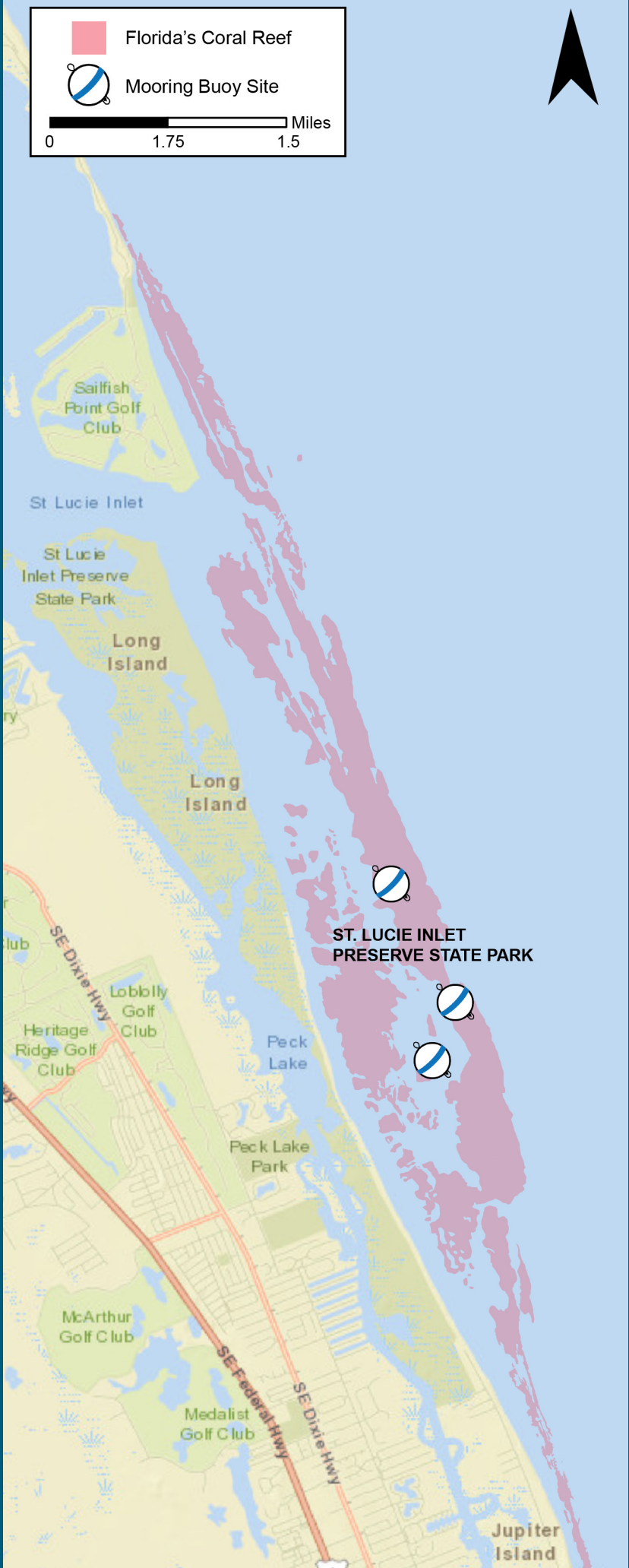
BROWARD COUNTY MOORING BUOYS			
SITE NAME	# OF BUOYS	LATITUDE (N)	LONGITUDE (W)
Deerfield Beach	10	26°18.345'	80°04.070'
Suzanne's Ledge	11	26°13.725'	80°04.957'
Pompano Drop-Off	31	26°12.661'	80°05.080'
Hall of Fame	9	26°11.546'	80°05.074'
Anglin's Ledge	11	26°11.353'	80°05.241'
Oakland Ridges	15	26°09.254'	80°05.341'
The Caves	10	26°07.600'	80°05.499'
Barracuda Reef	25	26°04.519'	80°05.765'

For more information or to report a problem concerning the buoys, please call 954-519-1270. Broward County assumes no liability from the use of any mooring buoy.

MIAMI-DADE COUNTY MOORING BUOYS			
SITE NAME	# OF BUOYS	LATITUDE (N)	LONGITUDE (W)
Graceland	6	25°56.128'	80°06.643'
North Canyon	3	25°55.805'	80°06.353'
South Canyon	3	25°51.627'	80°06.505'
Pillars	7	25°51.620'	80°05.978'
Jose Cuervo	2	25°46.134'	80°07.694'
Half Moon	2	25°43.660'	80°08.077'
RJ's Ledge	6	25°43.345'	80°05.952'
Rainbow Reef	6	25°41.519'	80°05.833'
Emerald Reef	7	25°40.641'	80°05.843'

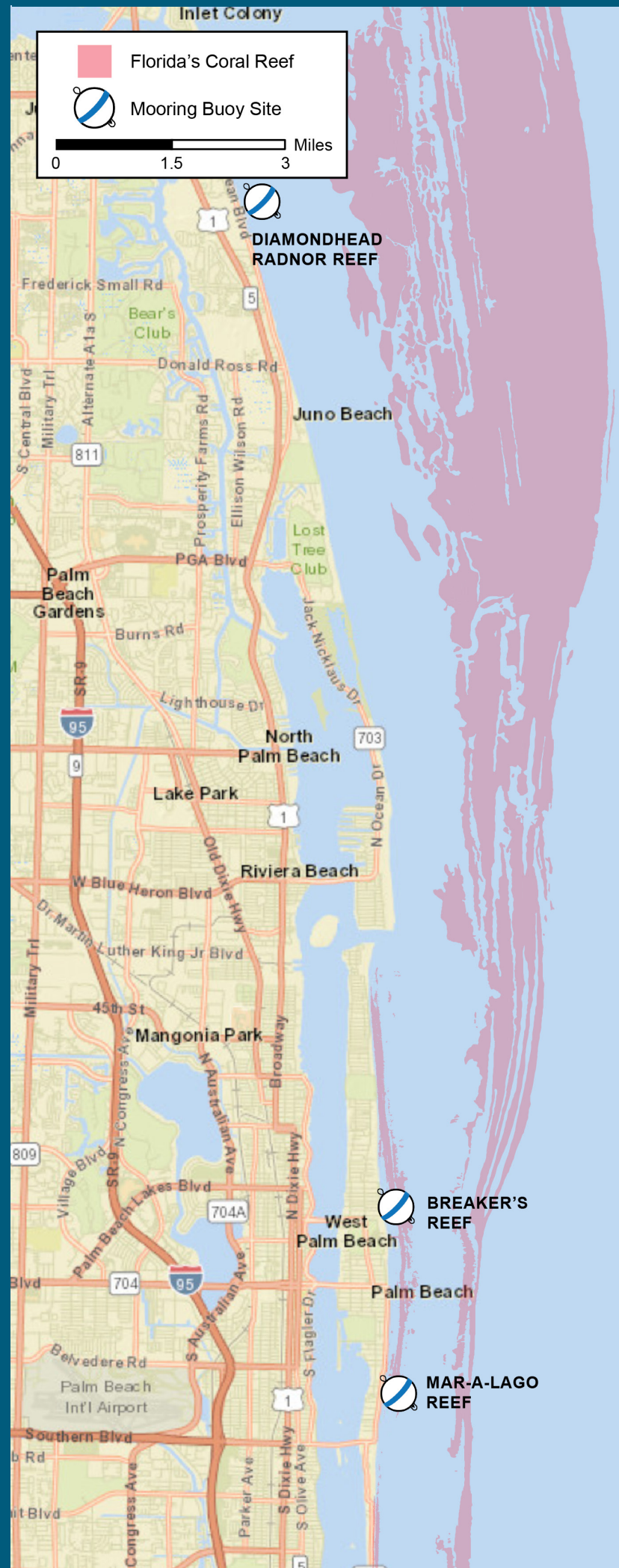
For more information or to report a problem concerning the buoys, please call 305-372-6864. Miami-Dade County assumes no liability from the use of any mooring buoy.

MARTIN COUNTY



Cover photo credit: Broward County (upper); Mary Brooks (lower).

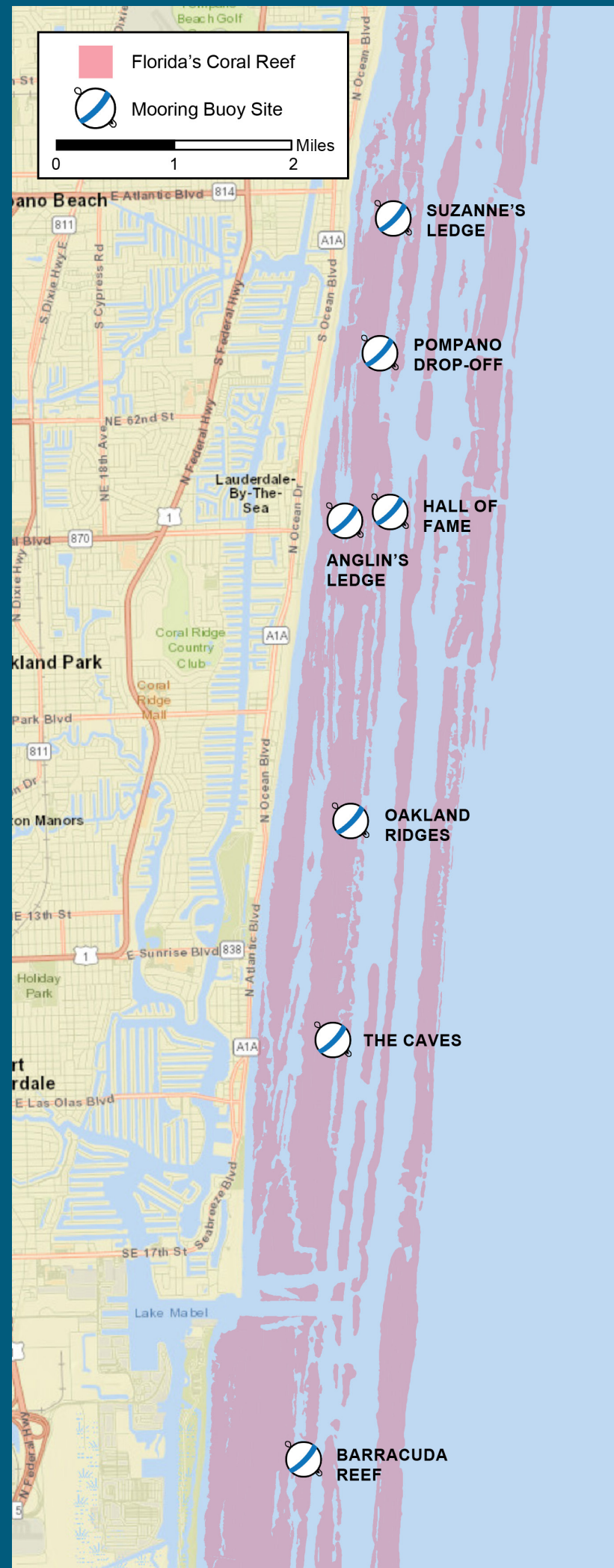
NORTH PALM BEACH COUNTY



SOUTH PALM BEACH COUNTY



BROWARD COUNTY



MIAMI-DADE COUNTY

