



I. Regional Overview
II. Southwest Coastal
III. Proposed Five-Year Plan
IV. Regional Trail
V. Support

Florida Greenways &
Trails Council
March 31, 2016

History of Trail Planning



WCF CCC
Multi-Use Trails Committee

TBARTA
CCC MUT Committee



1995

2004

2016



The Legacy Trail

Pinellas Trail
25th Anniversary



Serving Residents & Destinations

- **Pinellas County**
 - 80K Low-Income within 1 mile of trail
- **Hillsborough County**
 - 100K Low-Income within 1 mile of trail
- **Manatee County**
 - 24% Low-Income & 29% Minority in Cities of Palmetto and Bradenton
- **Sarasota County**
 - Pinecraft Amish & Mennonite Community
- **Charlotte County**
 - 12.7% Low-Income
- **Lee County**
 - 158K brought bikes on LeeTran in 2015
- **Collier County**
 - 13% Low-Income



(Eco)Tourism & Economic Development



30

Million
Visitors
In 2014

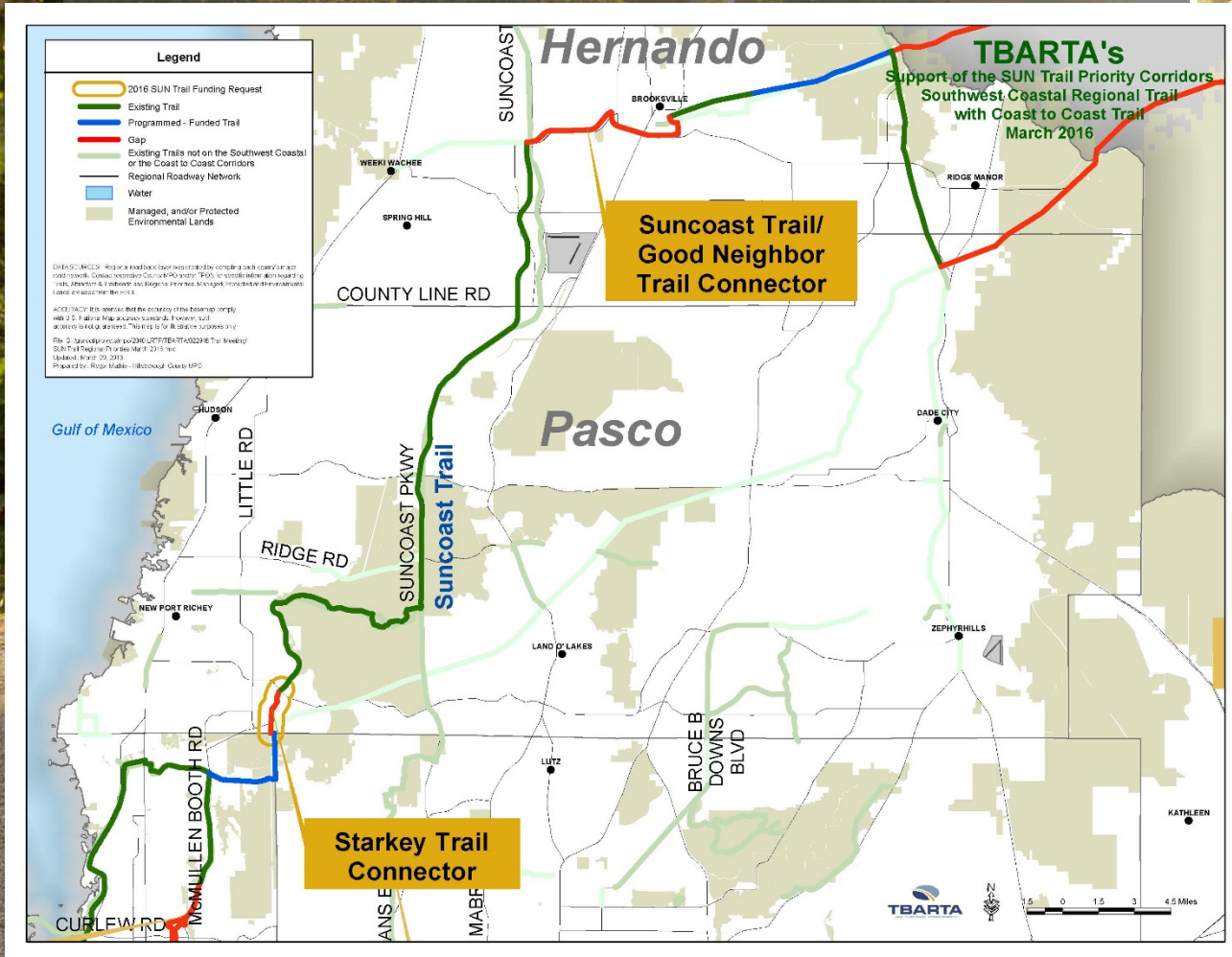


Beaches – State Parks – Waterways – Everglades – Baseball



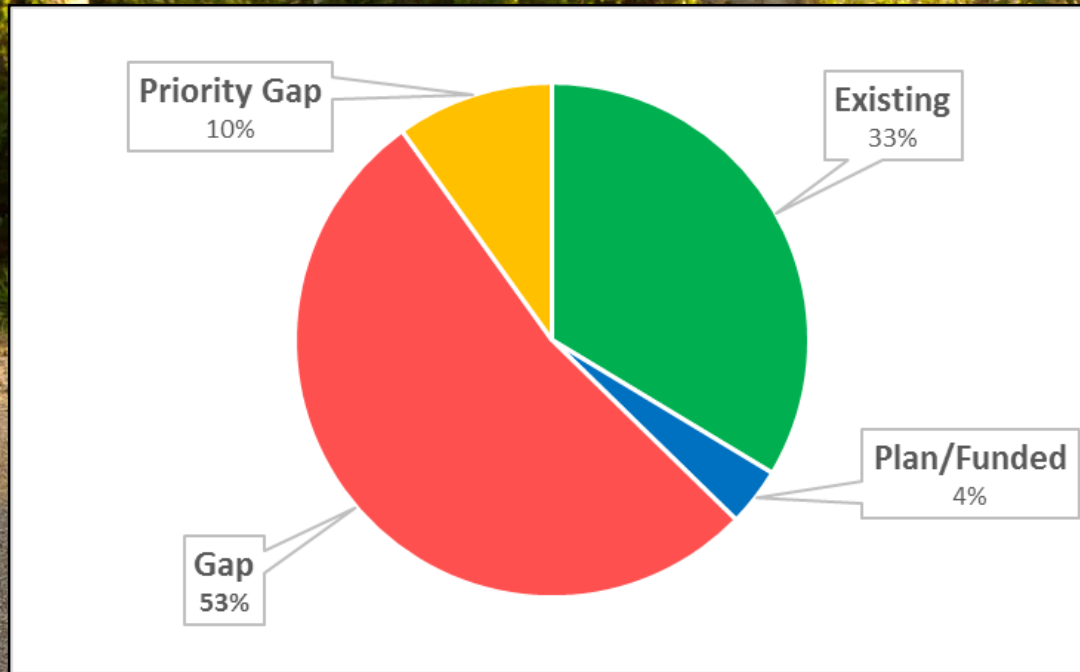
Proposed Five-Year Plan

Coast-to-Coast Connector Gaps



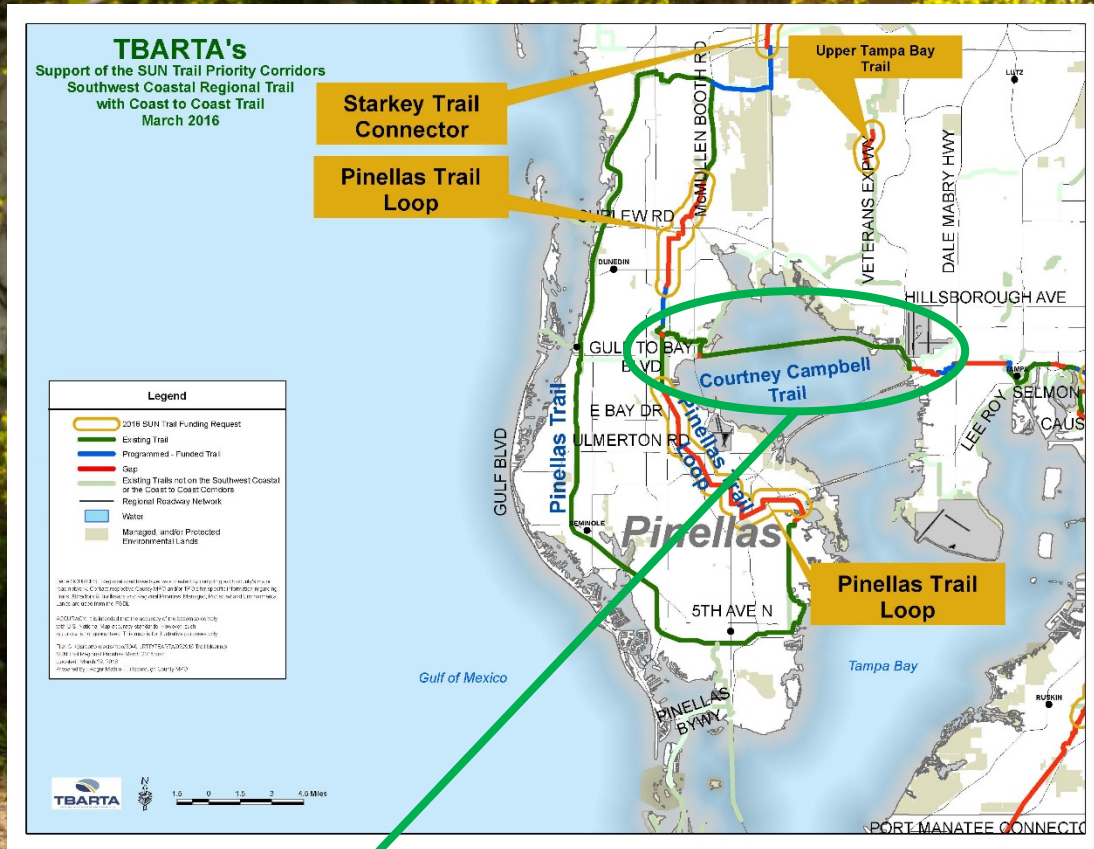
Proposed Five-Year Plan

Southwest Coastal Regional Trail (Miles)



- **Existing Planning Documents**
 - Municipal, County, & Regional Level
- **Public/Private Investment**
 - Trails, Bridges, & ROW
 - Trust for Public Land, FDOT D7 & DI, Cities, and Counties
- **Operations & Maintenance**
 - Conservation & Environmental Lands Management
 - County Commitment for O&M

Pinellas County



PROPOSED FIVE-YEAR PLAN

Pinellas Trail Loop

- 70-mile
- Phase I (\$5.5m) Funded
- Phases 2-4 requesting \$4.5-25m for design/build

WORTH NOTING

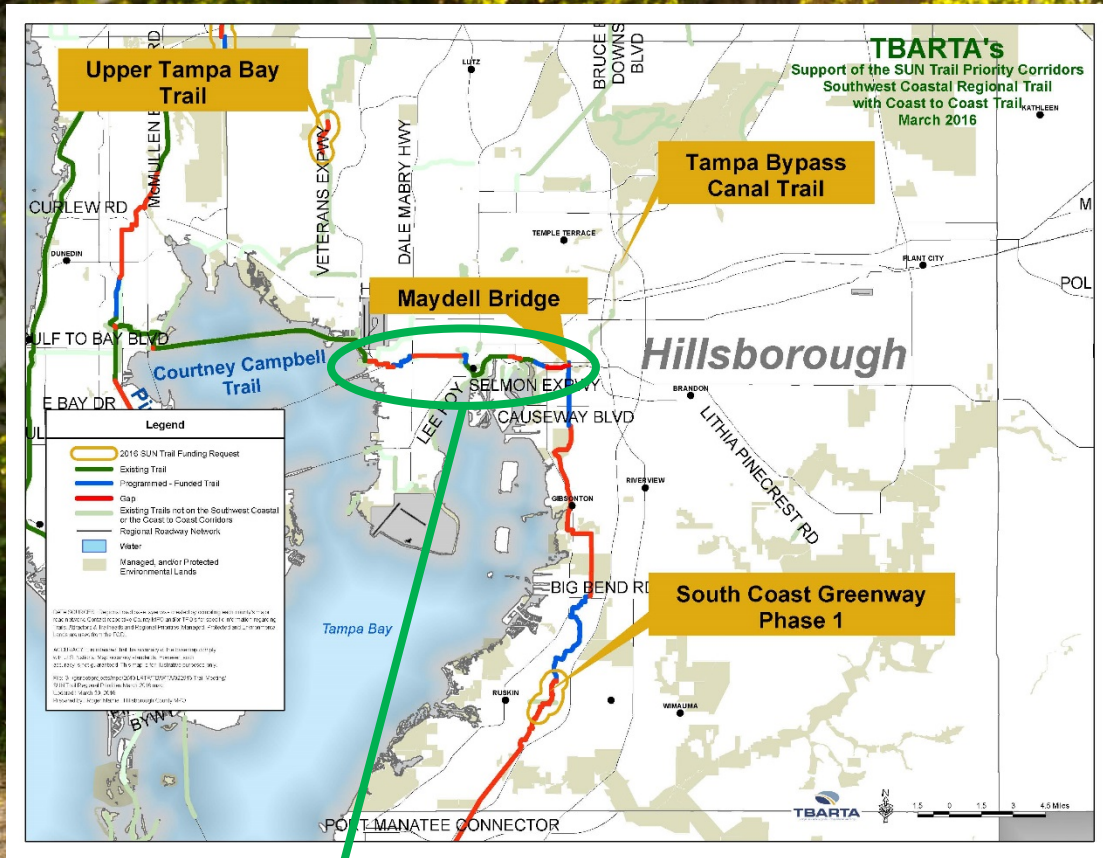
Serving Downtown Populations & Destinations

- St. Petersburg, Clearwater, Dunedin, Tarpon Springs, Safety Harbor, Largo, Palm Harbor, Belleair, Seminole

MAJOR ASSET Courtney Campbell Trail:

- Completed in 2015
- Major Regional Link

Hillsborough County



PROPOSED FIVE-YEAR PLAN

South Coast Greenway (Phase I)

- 2.3-mile segment
- TECO ROW
- \$2.2m for Construction

Maydell Bridge

- U.S. 41

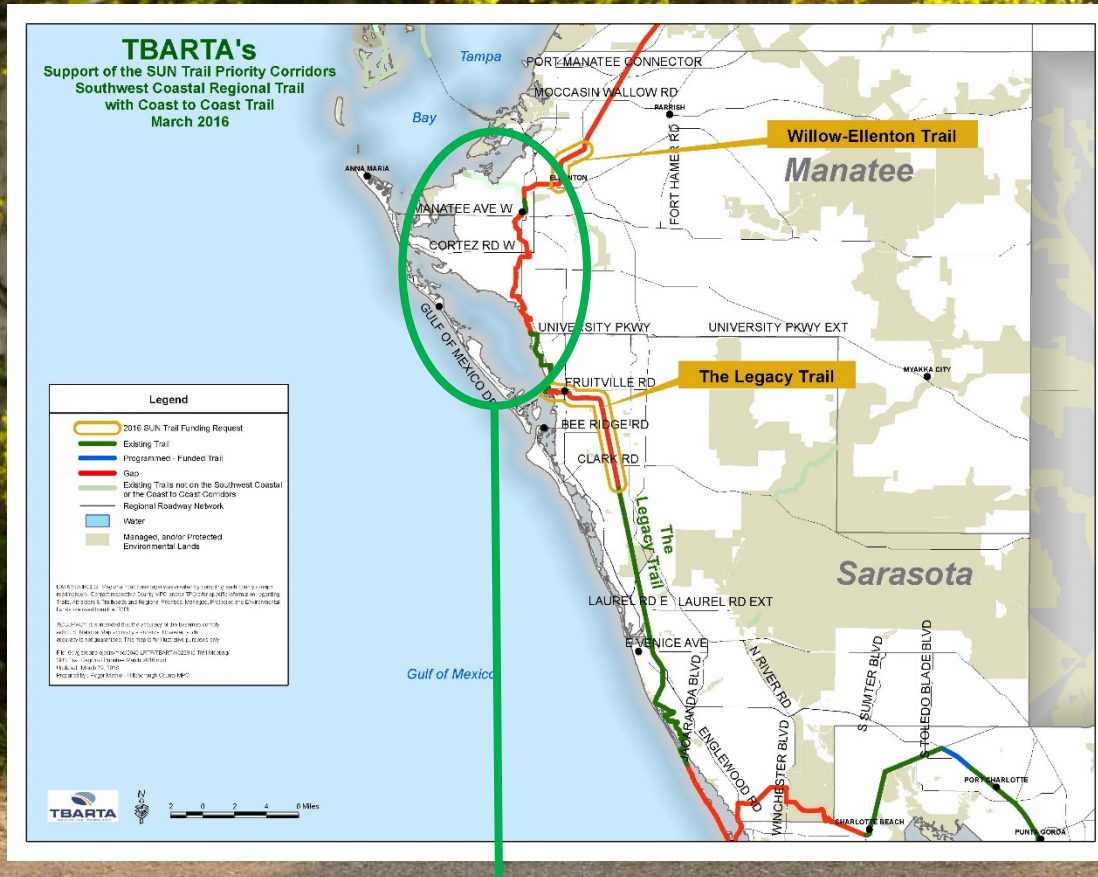
OPPORTUNITY Westshore to Downtown:

- Tampa Bay Express
- Multi-Use Trail & Multimodal Transportation

WORTH NOTING

- Westshore Regional Multimodal Center
- Greenways Master Plan

Manatee & Sarasota County



PROPOSED FIVE-YEAR PLAN

Willow-Ellenton Trail

- 3-mile FGTS System Priority
- \$300k for PE

The Legacy Trail (Extension)

- Existing Rail Corridor
- \$16-20m + ROW

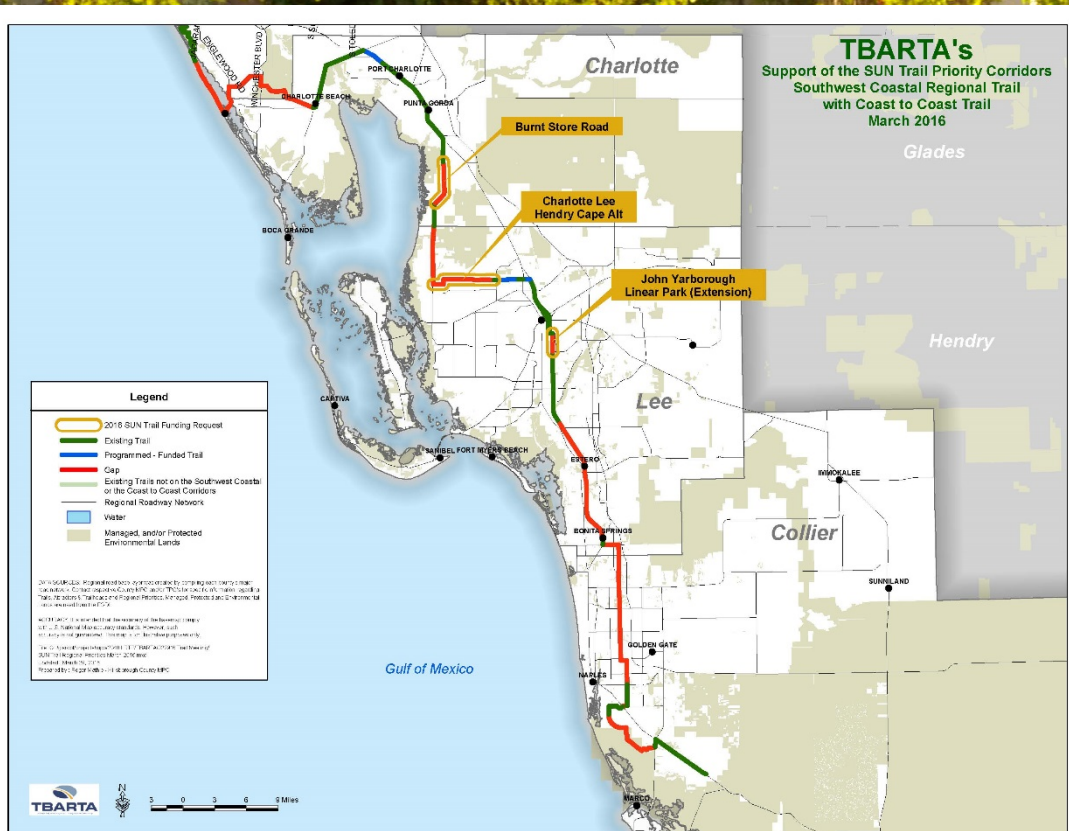
OPPORTUNITY Manatee County Gap

- Central Manatee Network Alternative Analysis Study
- Barrier Island Study (\$675k) beach access

WORTH NOTING

- Partnership History Among Trust for Public Land & Friends of Legacy Trail.

Charlotte, Lee, & Collier Counties



PROPOSED FIVE-YEAR PLAN

Burnt Store Road

- Charlotte-Lee Connector
- \$1.7m Design/Construction

Charlotte Lee Hendry

- 6.5-mile City of Cape Coral
- \$7.8m Design/Construction

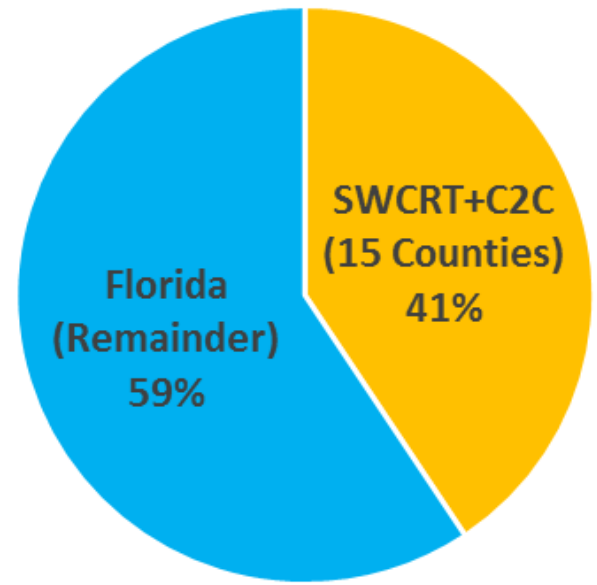
John Yarborough Linear Park (Extension)

- 1.7-mile gap \$400k PD&E

Priority Corridor Network

SWCRT + C2C County Populations 2015

*Source Bureau of Economic and Business Research, University of Florida



- ✓ C2C+SWCRT = 15 Counties & 520 miles
- ✓ C2C+SWCRT 2040 Population = +11m
- ✓ When completed will be Nation's largest network of locally connected trails
- ✓ O&M History/Support
- ✓ Proposed Five-Year Funding Plan
- ✓ 70 Letters of Support

