










Florida Circumnavigational Saltwater Paddling Trail Segment 1

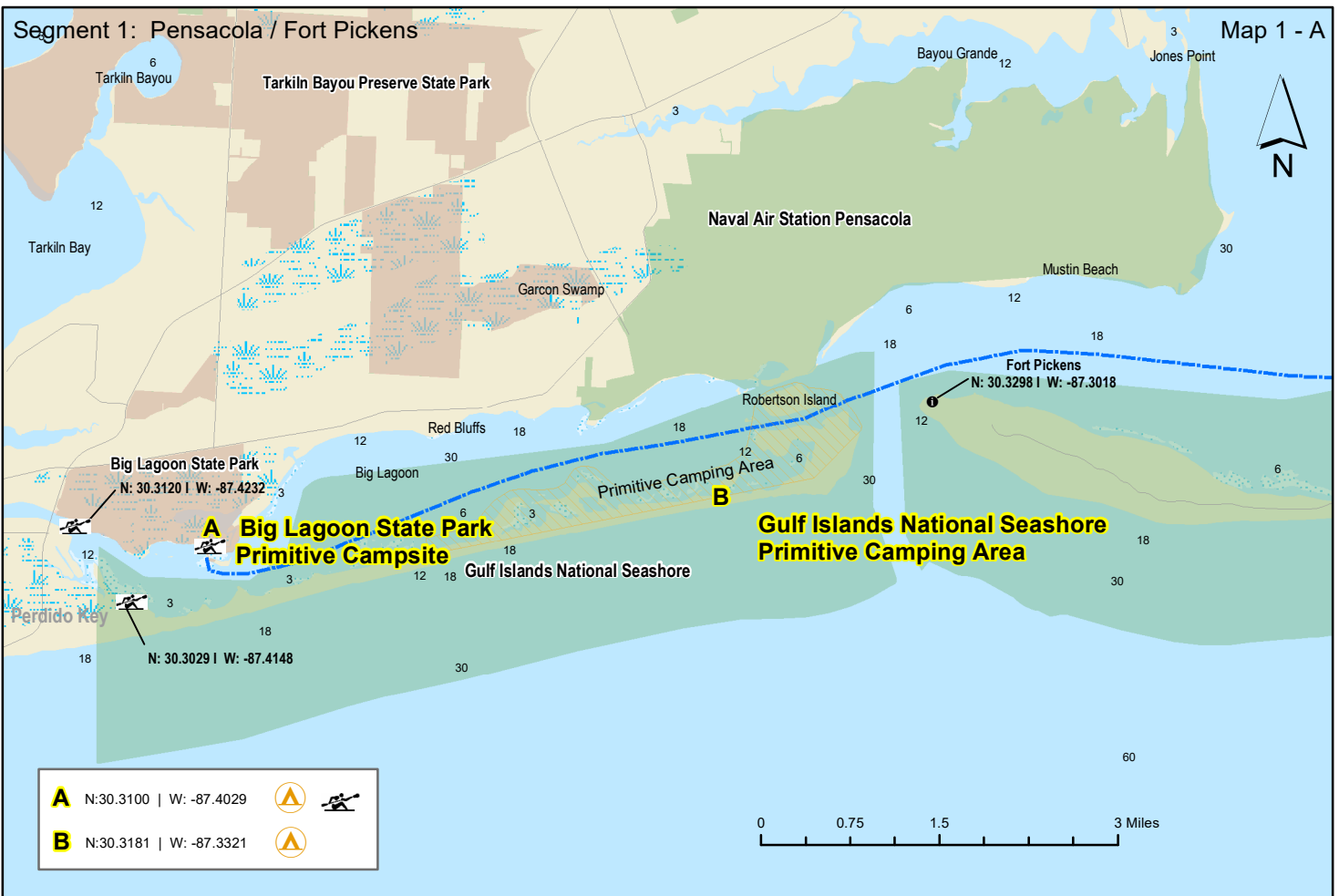
Pensacola / Fort Pickens

- | | |
|---|-------------------|
|  | Drinking Water |
|  | Camping |
|  | Kayak Launch |
|  | Shower Facility |
|  | Restroom |
|  | Restaurant |
|  | Grocery Store |
|  | Point of Interest |
|  | Hotel / Motel |

Disclaimer: This guide is intended as an aid to navigation only. A Global Positioning System (GPS) unit is required, and persons are encouraged to supplement these maps with NOAA charts or other maps.

Segment 1: Pensacola / Fort Pickens

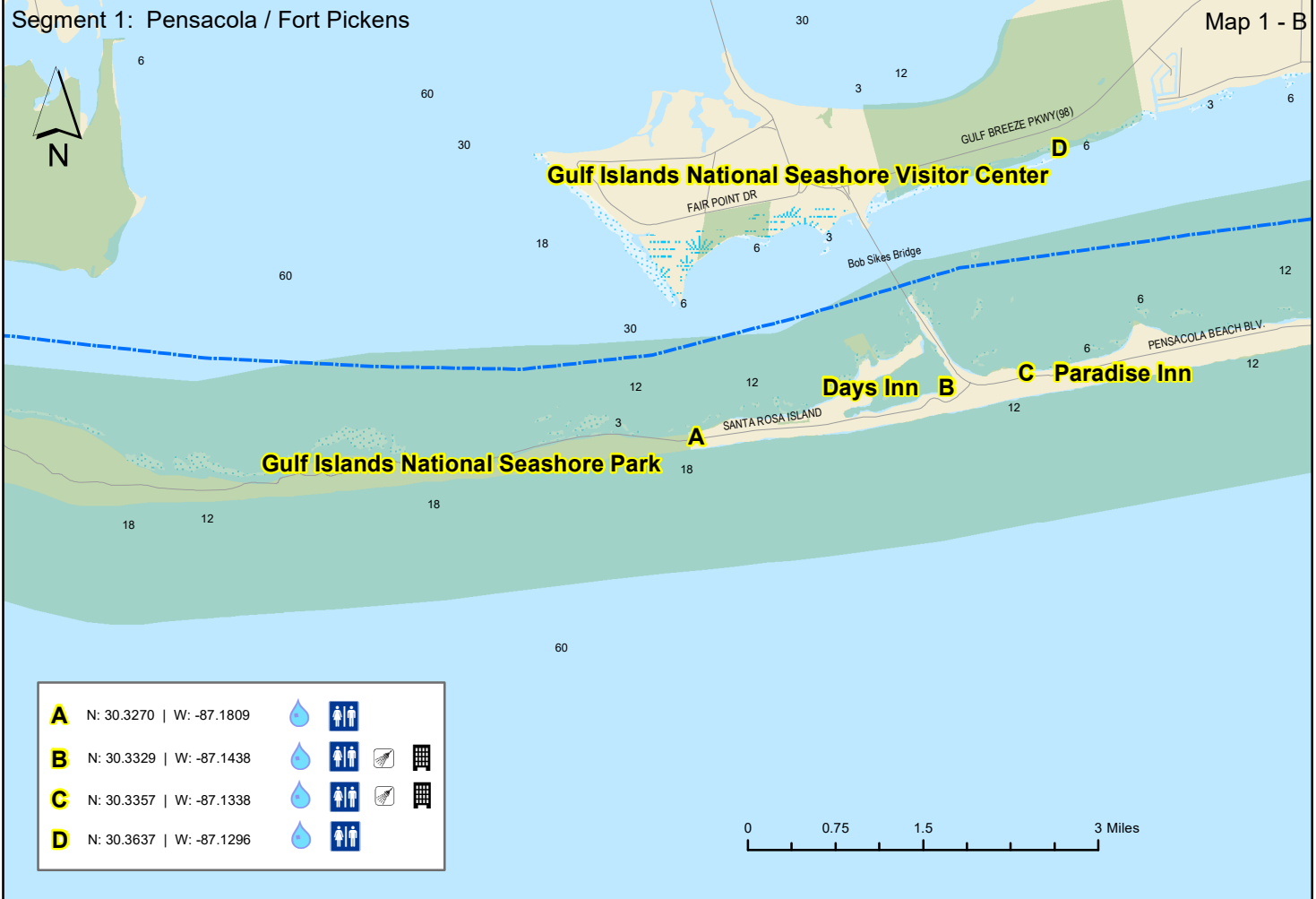
Map 1 - A



A	N: 30.3100 W: -87.4029		
B	N: 30.3181 W: -87.3321		

Segment 1: Pensacola / Fort Pickens

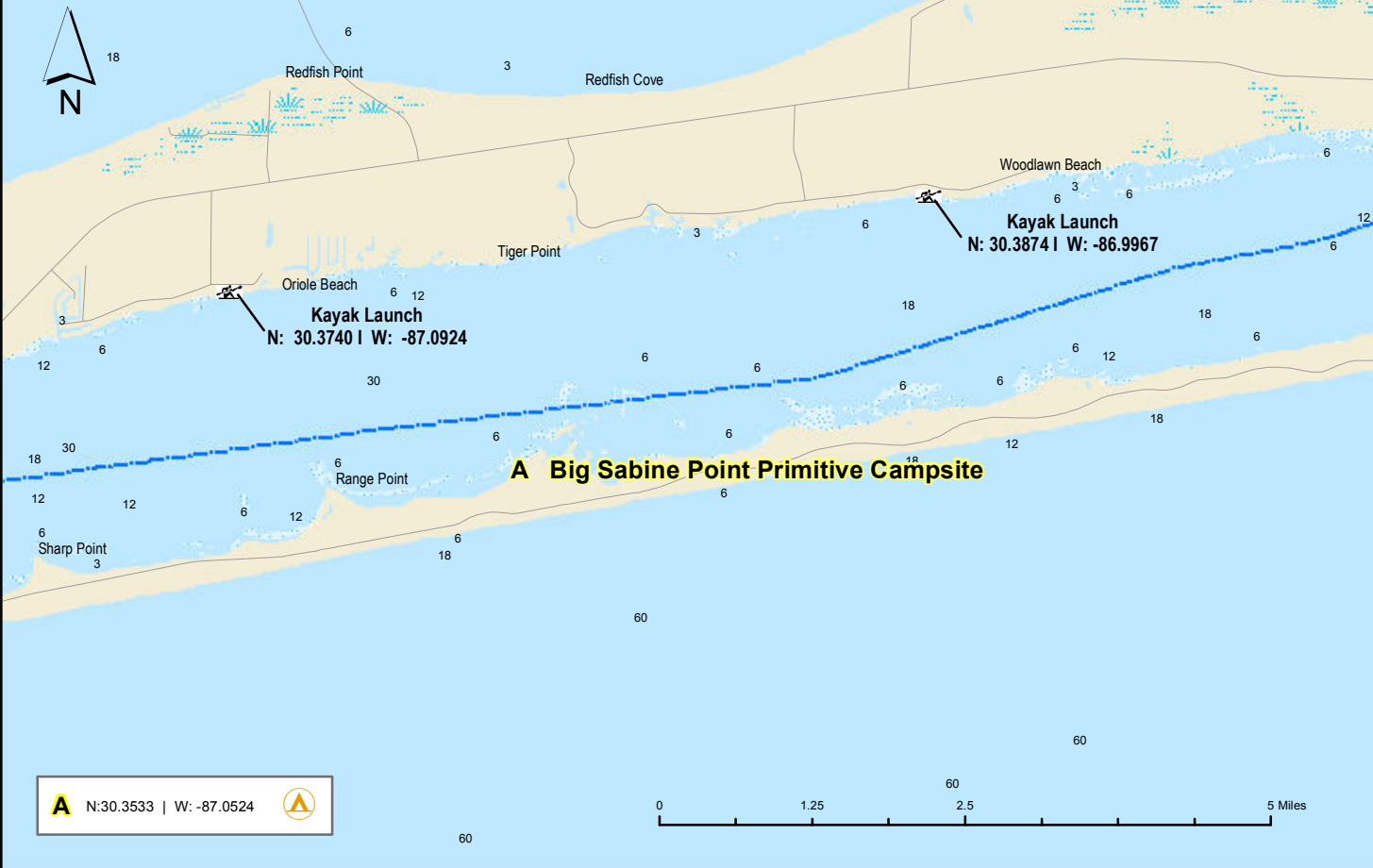
Map 1 - B



A	N: 30.3270 W: -87.1809				
B	N: 30.3329 W: -87.1438				
C	N: 30.3357 W: -87.1338				
D	N: 30.3637 W: -87.1296				

Segment 1: Pensacola / Fort Pickens

Map 2 - A



Segment 1: Pensacola / Fort Pickens

Map 2 - B

