

Emergency Contact Info:

911
Sarasota County Sheriff: (941) 861-5800
FWC 24-hour wildlife emergency/BUI hotline:
1-888-404-3922

Bayfront Park

(27.5358, -82.7368)

Picnic tables, grills,
and pavillions available.



Segment 10



Holmes Beach Motels

(27.5147, -82.7253)

Free trolley system on
Anna Maria Island. Shops
and restaurants nearby.



Dream Inn

(27.4812, -82.7049)



Coquina Beach

(27.4551, -82.6947)



Robinson Preserve

(27.5209, -82.6667)

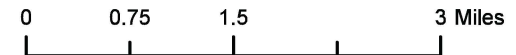


Florida Circumnavigational Saltwater Paddling Trail

Segment 10: Sarasota/Venice (Map 1 of 5)

Begin: Anna Maria Island/Bayfront Park
End: Manasota Key Resort

Distance: 51 miles
Duration: 3 days



Disclaimer: This guide is intended as an aid to navigation only. A Global Positioning System (GPS) unit is required and persons are encouraged to supplement these maps with NOAA charts or other maps.
Updated: 11/25/2024



Emergency Contact Info:

911
Sarasota County Sheriff: (941) 861-5800
FWC 24-hour wildlife emergency/BUI hotline:
1-888-404-3922

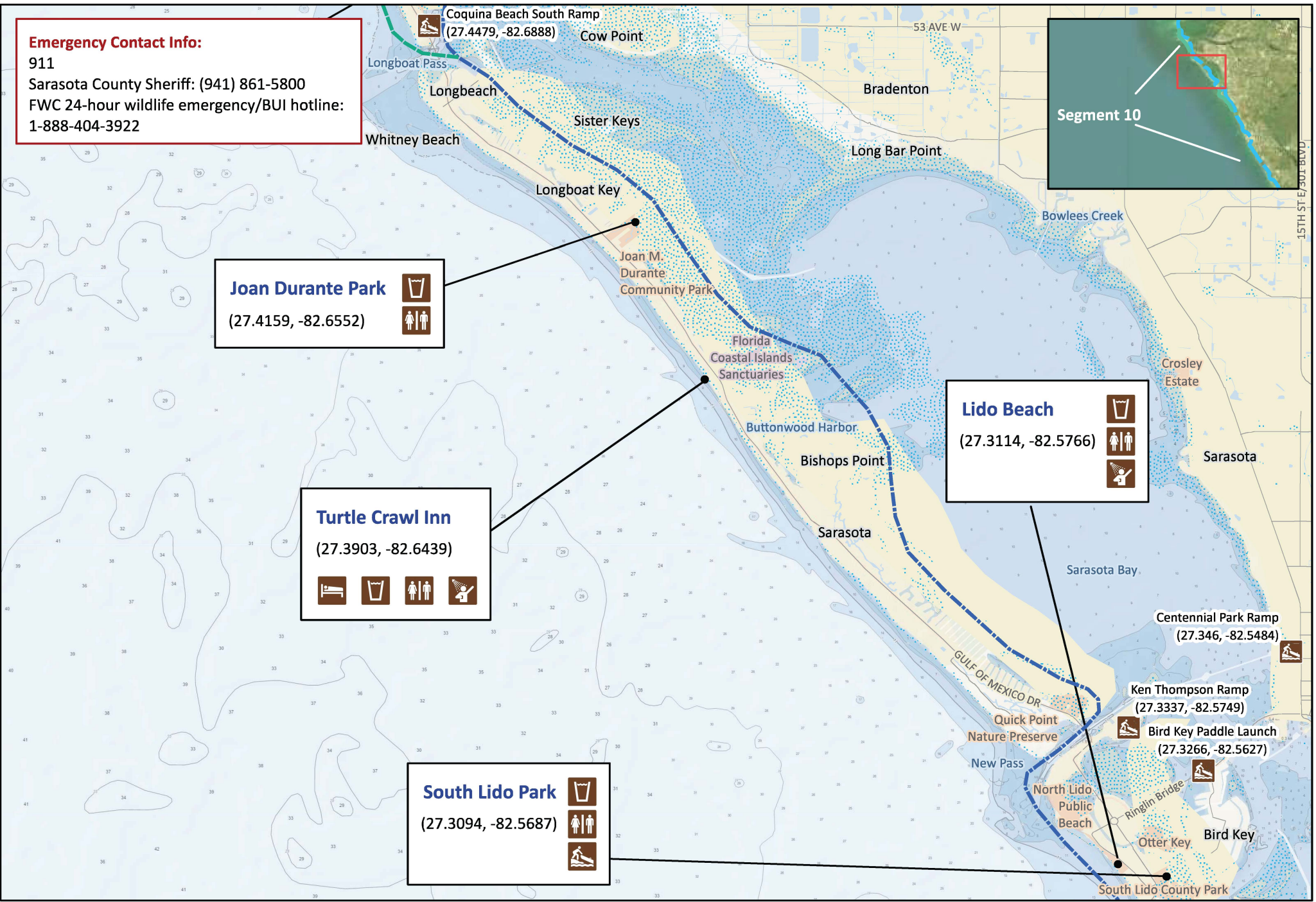


Joan Durante Park
(27.4159, -82.6552)

Turtle Crawl Inn
(27.3903, -82.6439)

South Lido Park
(27.3094, -82.5687)

Lido Beach
(27.3114, -82.5766)

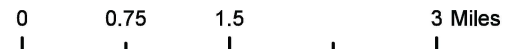


Florida Circumnavigational Saltwater Paddling Trail

Segment 10: Sarasota/Venice (Map 2 of 5)

Begin: Anna Maria Island/Bayfront Park
End: Manasota Key Resort

Distance: 51 miles
Duration: 3 days



Disclaimer: This guide is intended as an aid to navigation only. A Global Positioning System (GPS) unit is required and persons are encouraged to supplement these maps with NOAA charts or other maps.
Updated: 11/25/2024



Emergency Contact Info:

911
Sarasota County Sheriff: (941) 861-5800
FWC 24-hour wildlife emergency/BUI hotline:
1-888-404-3922



Sandcastle Resort
(27.3037, -82.5718)

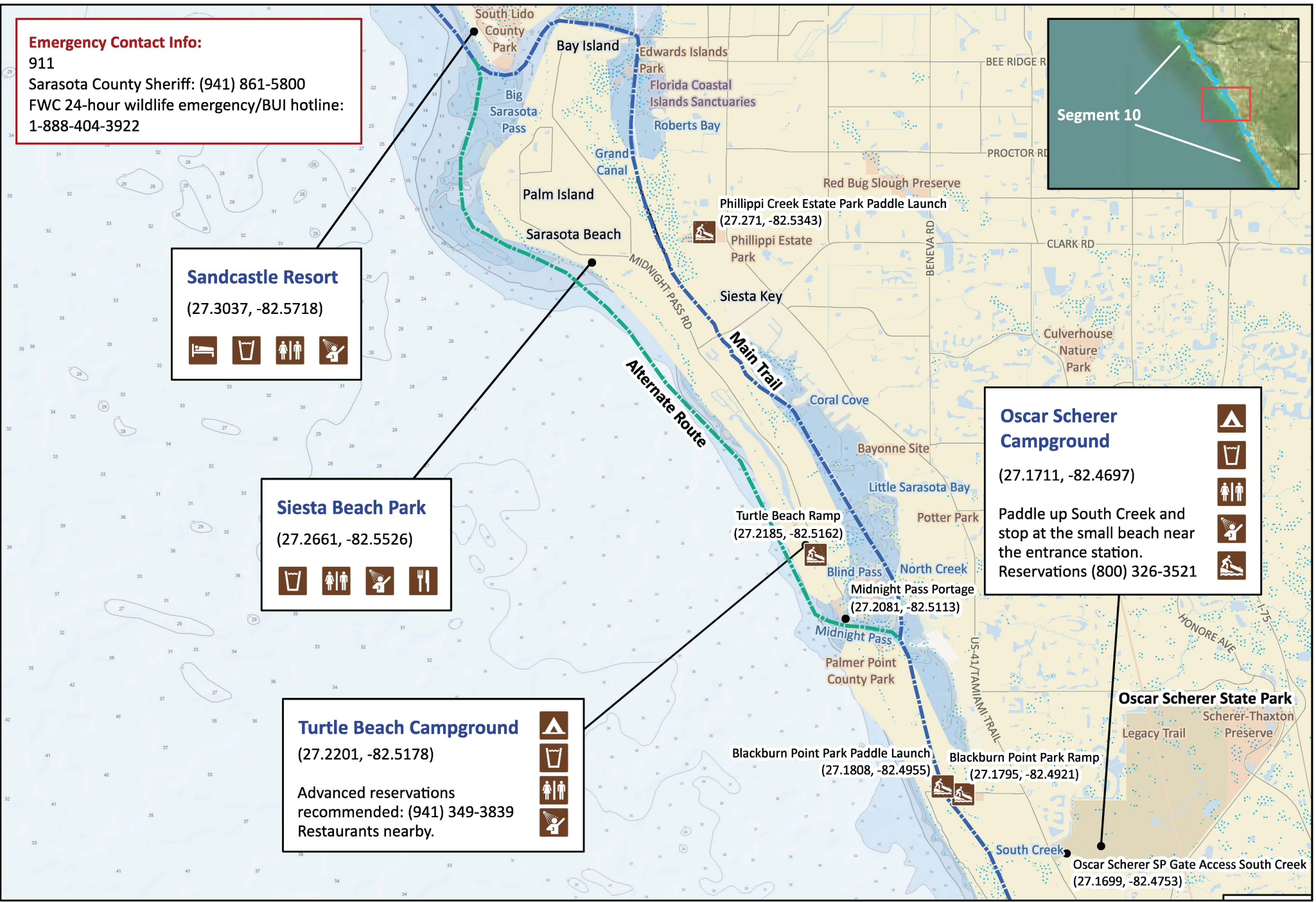
Siesta Beach Park
(27.2661, -82.5526)

Turtle Beach Campground
(27.2201, -82.5178)

Advanced reservations recommended: (941) 349-3839
Restaurants nearby.

Oscar Scherer Campground
(27.1711, -82.4697)

Paddle up South Creek and stop at the small beach near the entrance station.
Reservations (800) 326-3521

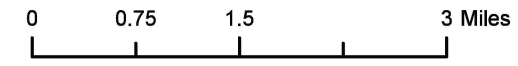


Florida Circumnavigational Saltwater Paddling Trail

Segment 10: Sarasota/Venice (Map 3 of 5)

Begin: Anna Maria Island/Bayfront Park
End: Manasota Key Resort

Distance: 51 miles
Duration: 3 days

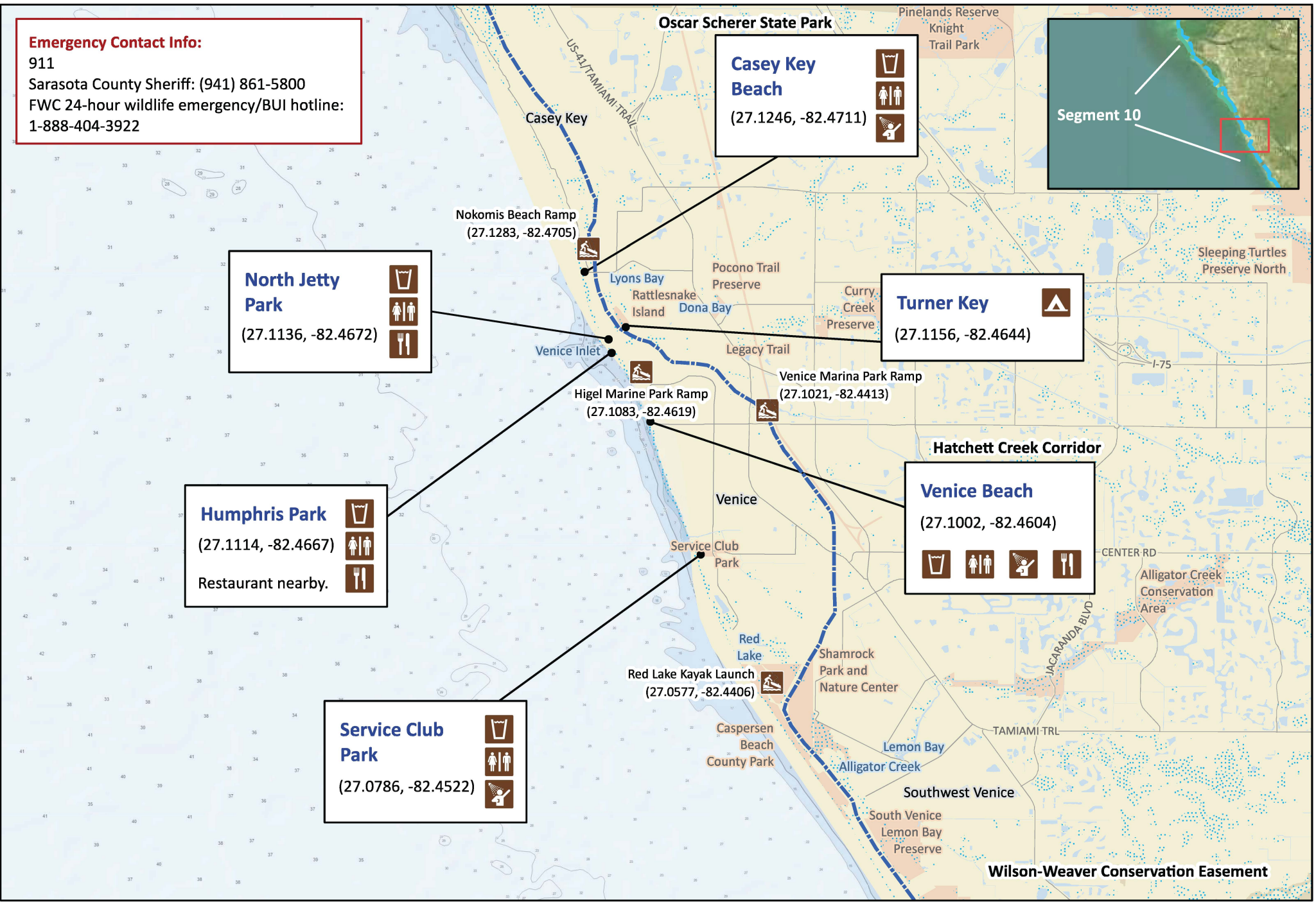


Disclaimer: This guide is intended as an aid to navigation only. A Global Positioning System (GPS) unit is required and persons are encouraged to supplement these maps with NOAA charts or other maps.
Updated: 11/25/2024



Emergency Contact Info:

911
Sarasota County Sheriff: (941) 861-5800
FWC 24-hour wildlife emergency/BUI hotline:
1-888-404-3922



North Jetty Park
(27.1136, -82.4672)

- Restroom
- Picnic Table
- Food Service

Casey Key Beach
(27.1246, -82.4711)

- Restroom
- Picnic Table
- Food Service

Turner Key
(27.1156, -82.4644)

- Shelter

Humphris Park
(27.1114, -82.4667)

- Restroom
- Picnic Table
- Food Service

Restaurant nearby.

Venice Beach
(27.1002, -82.4604)

- Restroom
- Picnic Table
- Food Service
- Food Service

Service Club Park
(27.0786, -82.4522)

- Restroom
- Picnic Table
- Food Service

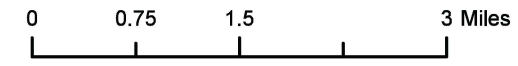


Florida Circumnavigational Saltwater Paddling Trail

Segment 10: Sarasota/Venice (Map 4 of 5)

Begin: Anna Maria Island/Bayfront Park
End: Manasota Key Resort

Distance: 51 miles
Duration: 3 days



Disclaimer: This guide is intended as an aid to navigation only. A Global Positioning System (GPS) unit is required and persons are encouraged to supplement these maps with NOAA charts or other maps.
Updated: 11/25/2024



Emergency Contact Info:

911
Sarasota County Sheriff: (941) 861-5800
FWC 24-hour wildlife emergency/BUI hotline:
1-888-404-3922

Manasota Beach

(27.0104, -82.4126)



Blind Pass Park

(26.9631, -82.3851)



Beach Croft Motel

(26.9266, -82.3621)

Reservations:
(941) 474-6509



Manasota Key Resort

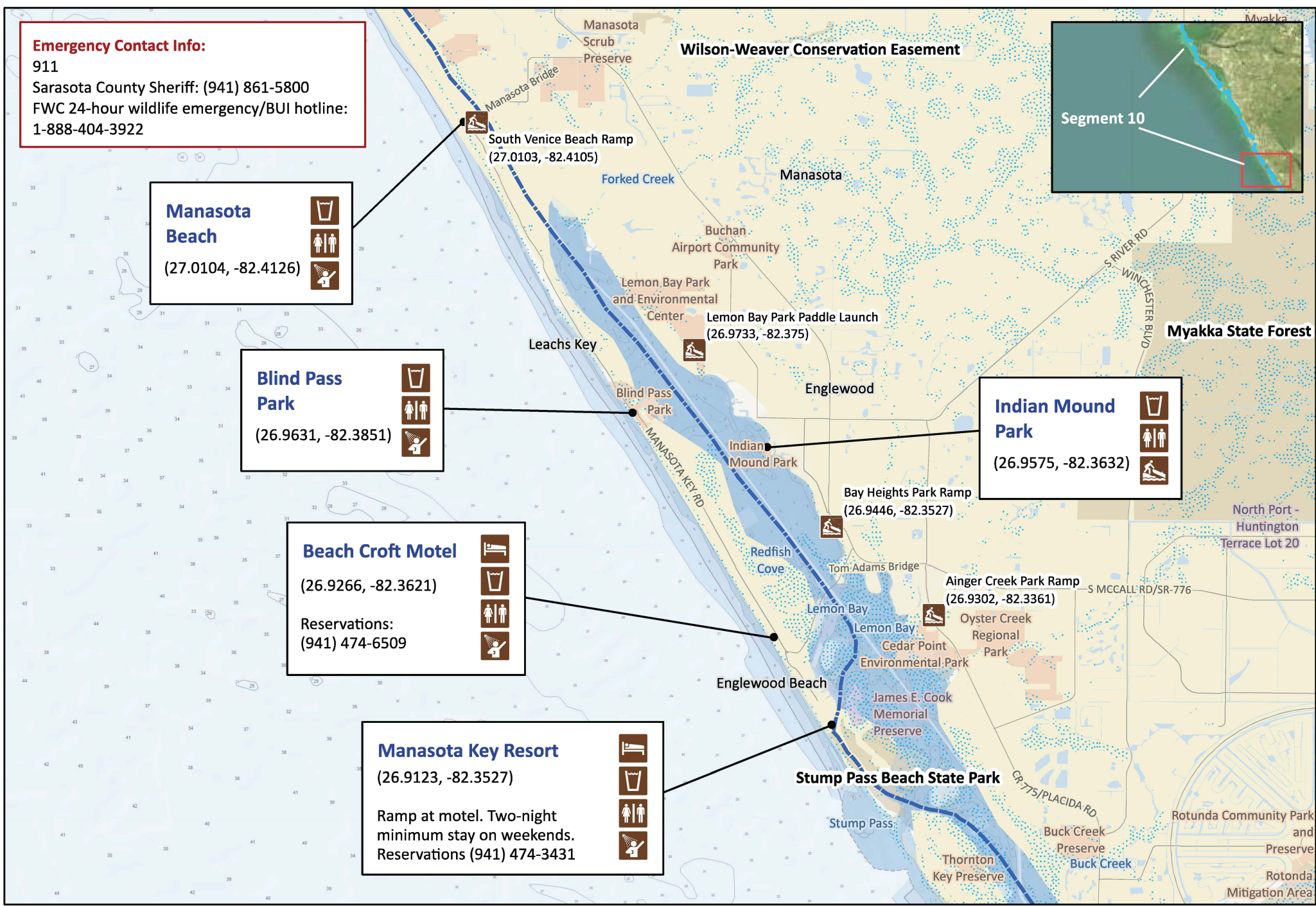
(26.9123, -82.3527)

Ramp at motel. Two-night minimum stay on weekends.
Reservations (941) 474-3431



Indian Mound Park

(26.9575, -82.3632)

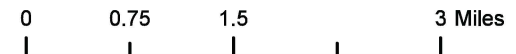


Florida Circumnavigational Saltwater Paddling Trail

Segment 10: Sarasota/Venice (Map 5 of 5)

Begin: Anna Maria Island/Bayfront Park
End: Manasota Key Resort

Distance: 51 miles
Duration: 3 days



Disclaimer: This guide is intended as an aid to navigation only. A Global Positioning System (GPS) unit is required and persons are encouraged to supplement these maps with NOAA charts or other maps.
Updated: 11/25/2024

