

Emergency Contact Info:

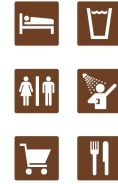
911
Collier County Sheriff: (239) 774-4434
Everglades NP 24-hour Search and Rescue:
(305) 247-7272
Monroe County Sheriff: (305) 289-2430
FWC 24-hour wildlife emergency/BUI hotline:
1-888-404-3922

Green Heart of the Everglades

Everglades City

(25.8604, -81.3844)

Obtain a gallon of water
per day per person.



Segment 14

Big Cypress National Preserve

Ten Thousand Islands National Wildlife Refuge

Cape Romano-Ten
Thousand Islands

Tiger Key Campsite ENP

(25.8340, -81.4925)

Permit required from Visitor Center.
No advanced reservations; arrive
in person up to 24 hrs in advance.



ENP Visitor Center

(25.8457, -81.3871)

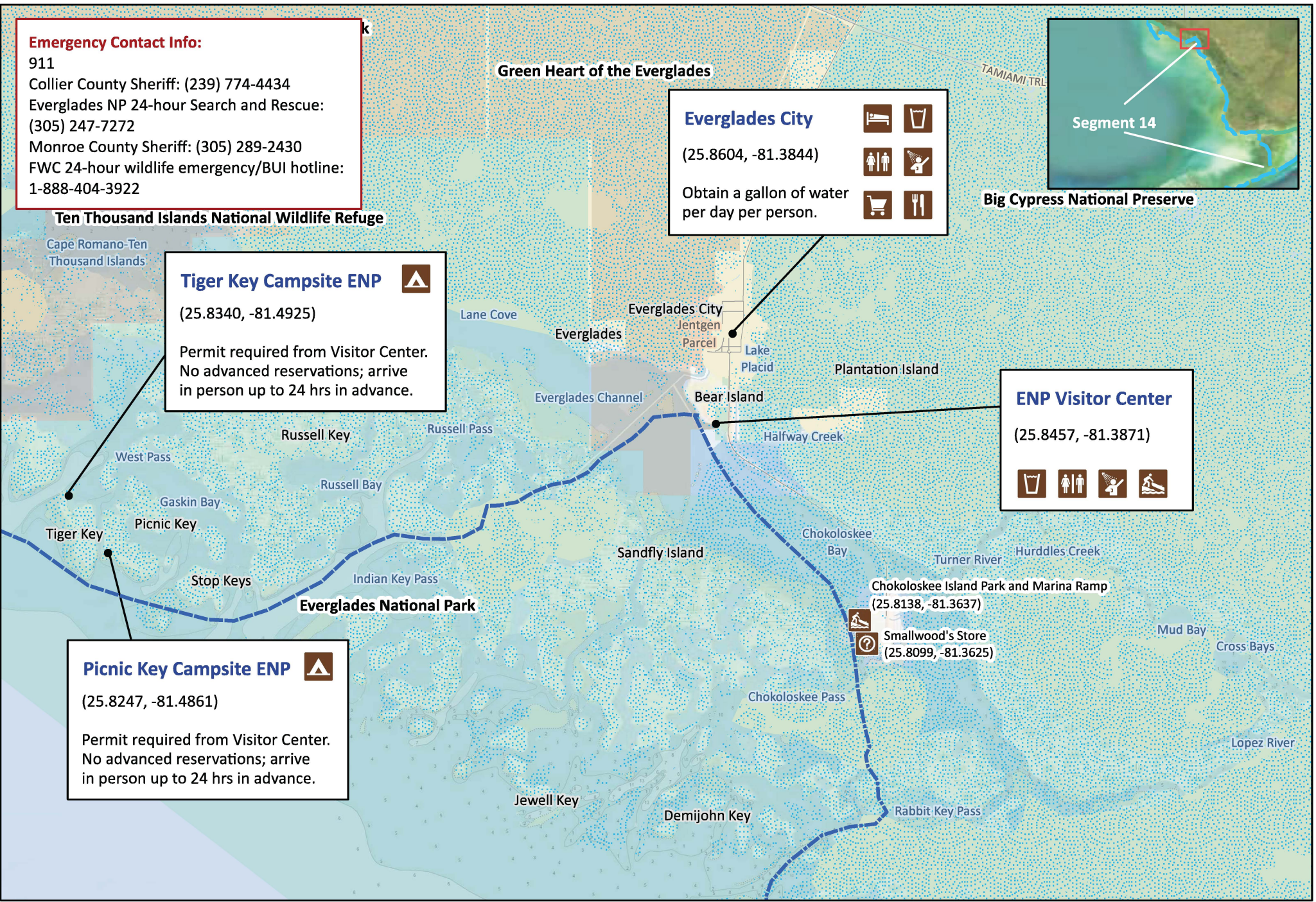


Picnic Key Campsite ENP

(25.8247, -81.4861)

Permit required from Visitor Center.
No advanced reservations; arrive
in person up to 24 hrs in advance.

Everglades National Park

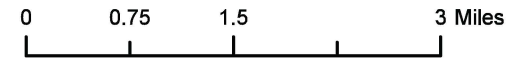


Florida Circumnavigational Saltwater Paddling Trail

Segment 14: Everglades/Florida Bay (Map 1 of 9)

Begin: Everglades City
End: Long Key State Park

Distance: 99.5 miles (Gulf side); 126.5 miles (Wilderness Waterway)
Duration: 9 days (Gulf side); 11 days (Wilderness Waterway)

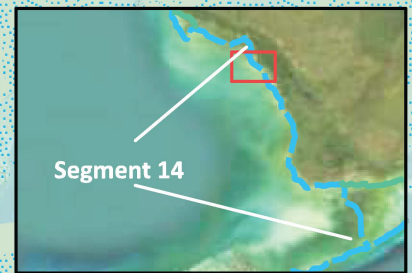


Disclaimer: This guide is intended as an aid to navigation only. A Global Positioning System (GPS) unit is required and persons are encouraged to supplement these maps with NOAA charts or other maps.
Updated: 11/25/2024



Emergency Contact Info:

911
Collier County Sheriff: (239) 774-4434
Everglades NP 24-hour Search and Rescue:
(305) 247-7272
Monroe County Sheriff: (305) 289-2430
FWC 24-hour wildlife emergency/BUI hotline:
1-888-404-3922



Rabbit Key Campsite ENP



(25.7517, -81.3740)

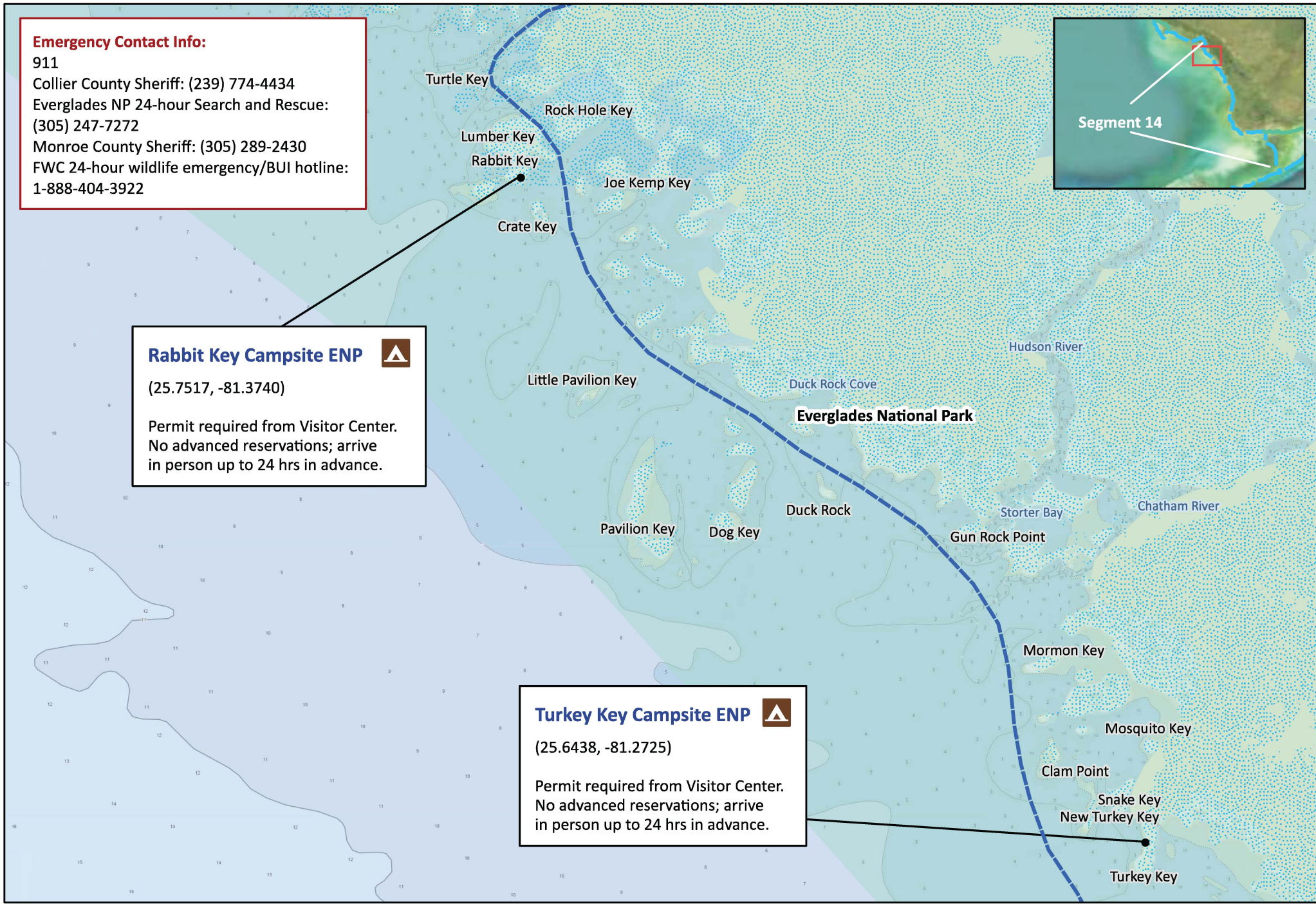
Permit required from Visitor Center.
No advanced reservations; arrive
in person up to 24 hrs in advance.

Turkey Key Campsite ENP



(25.6438, -81.2725)

Permit required from Visitor Center.
No advanced reservations; arrive
in person up to 24 hrs in advance.

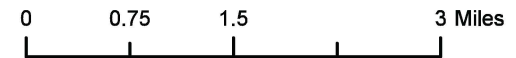


Florida Circumnavigational Saltwater Paddling Trail

Segment 14: Everglades/Florida Bay (Map 2 of 9)

Begin: Everglades City
End: Long Key State Park

Distance: 99.5 miles (Gulf side); 126.5 miles (Wilderness Waterway)
Duration: 9 days (Gulf side); 11 days (Wilderness Waterway)

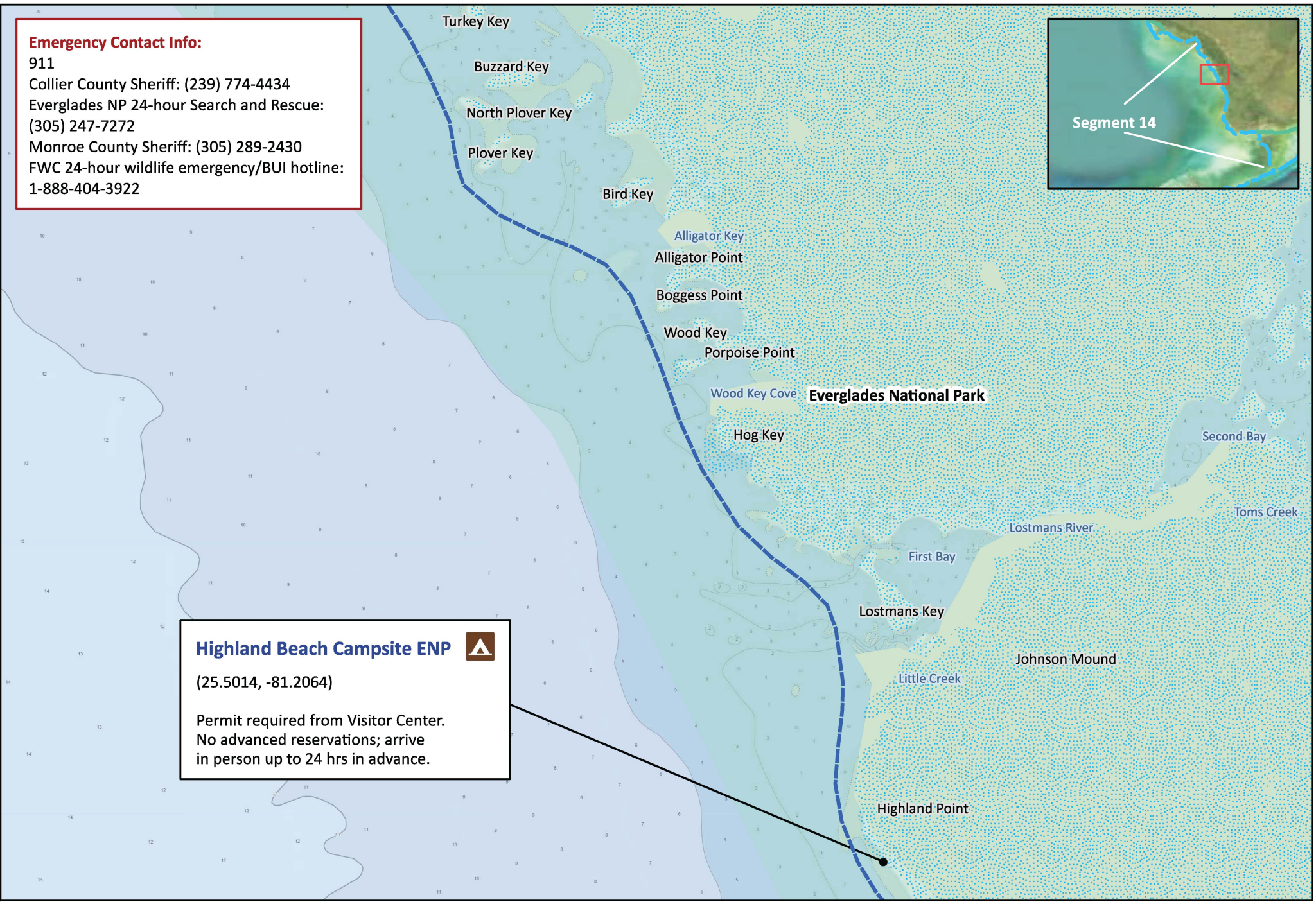
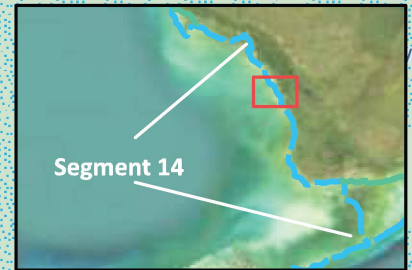


Disclaimer: This guide is intended as an aid to navigation only. A Global Positioning System (GPS) unit is required and persons are encouraged to supplement these maps with NOAA charts or other maps.
Updated: 11/25/2024



Emergency Contact Info:

911
Collier County Sheriff: (239) 774-4434
Everglades NP 24-hour Search and Rescue:
(305) 247-7272
Monroe County Sheriff: (305) 289-2430
FWC 24-hour wildlife emergency/BUI hotline:
1-888-404-3922



Highland Beach Campsite ENP



(25.5014, -81.2064)

Permit required from Visitor Center.
No advanced reservations; arrive
in person up to 24 hrs in advance.

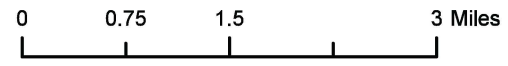


Florida Circumnavigational Saltwater Paddling Trail

Segment 14: Everglades/Florida Bay (Map 3 of 9)

Begin: Everglades City
End: Long Key State Park

Distance: 99.5 miles (Gulf side); 126.5 miles (Wilderness Waterway)
Duration: 9 days (Gulf side); 11 days (Wilderness Waterway)

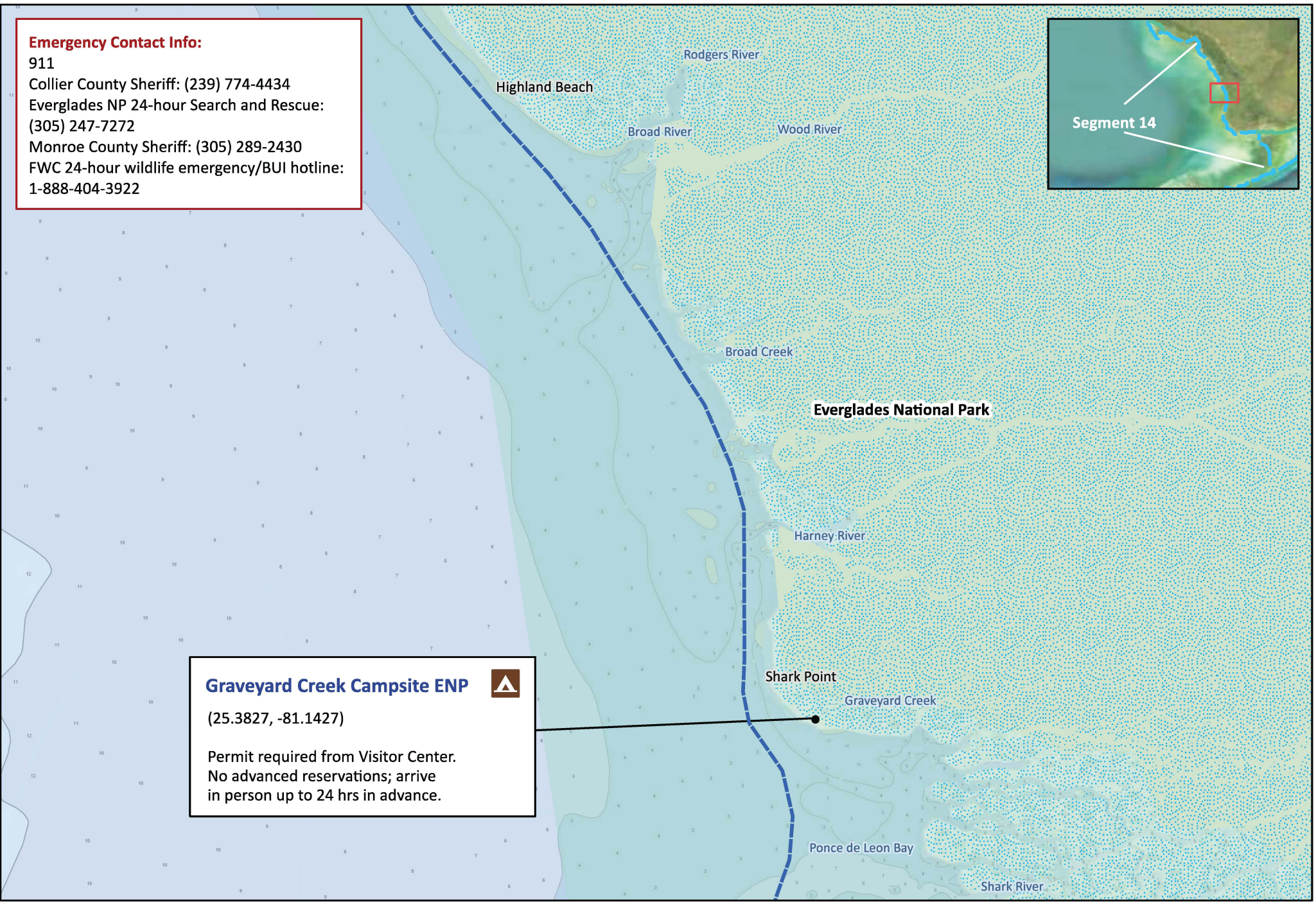
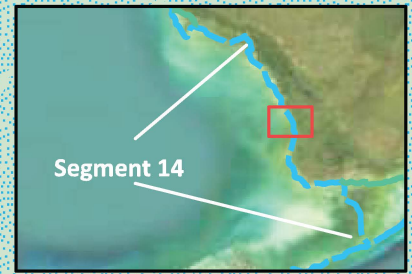



Disclaimer: This guide is intended as an aid to navigation only. A Global Positioning System (GPS) unit is required and persons are encouraged to supplement these maps with NOAA charts or other maps.
Updated: 11/25/2024



Emergency Contact Info:

911
Collier County Sheriff: (239) 774-4434
Everglades NP 24-hour Search and Rescue:
(305) 247-7272
Monroe County Sheriff: (305) 289-2430
FWC 24-hour wildlife emergency/BUI hotline:
1-888-404-3922



Graveyard Creek Campsite ENP 
(25.3827, -81.1427)
Permit required from Visitor Center.
No advanced reservations; arrive
in person up to 24 hrs in advance.

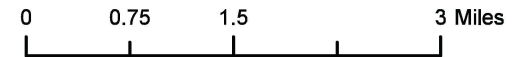


Florida Circumnavigational Saltwater Paddling Trail

Segment 14: Everglades/Florida Bay (Map 4 of 9)

Begin: Everglades City
End: Long Key State Park

Distance: 99.5 miles (Gulf side); 126.5 miles (Wilderness Waterway)
Duration: 9 days (Gulf side); 11 days (Wilderness Waterway)

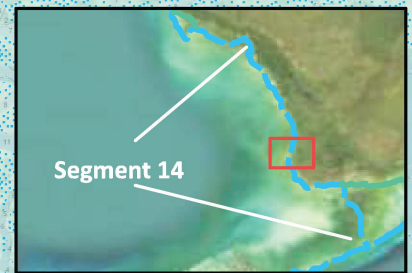


Disclaimer: This guide is intended as an aid to navigation only. A Global Positioning System (GPS) unit is required and persons are encouraged to supplement these maps with NOAA charts or other maps.
Updated: 11/25/2024

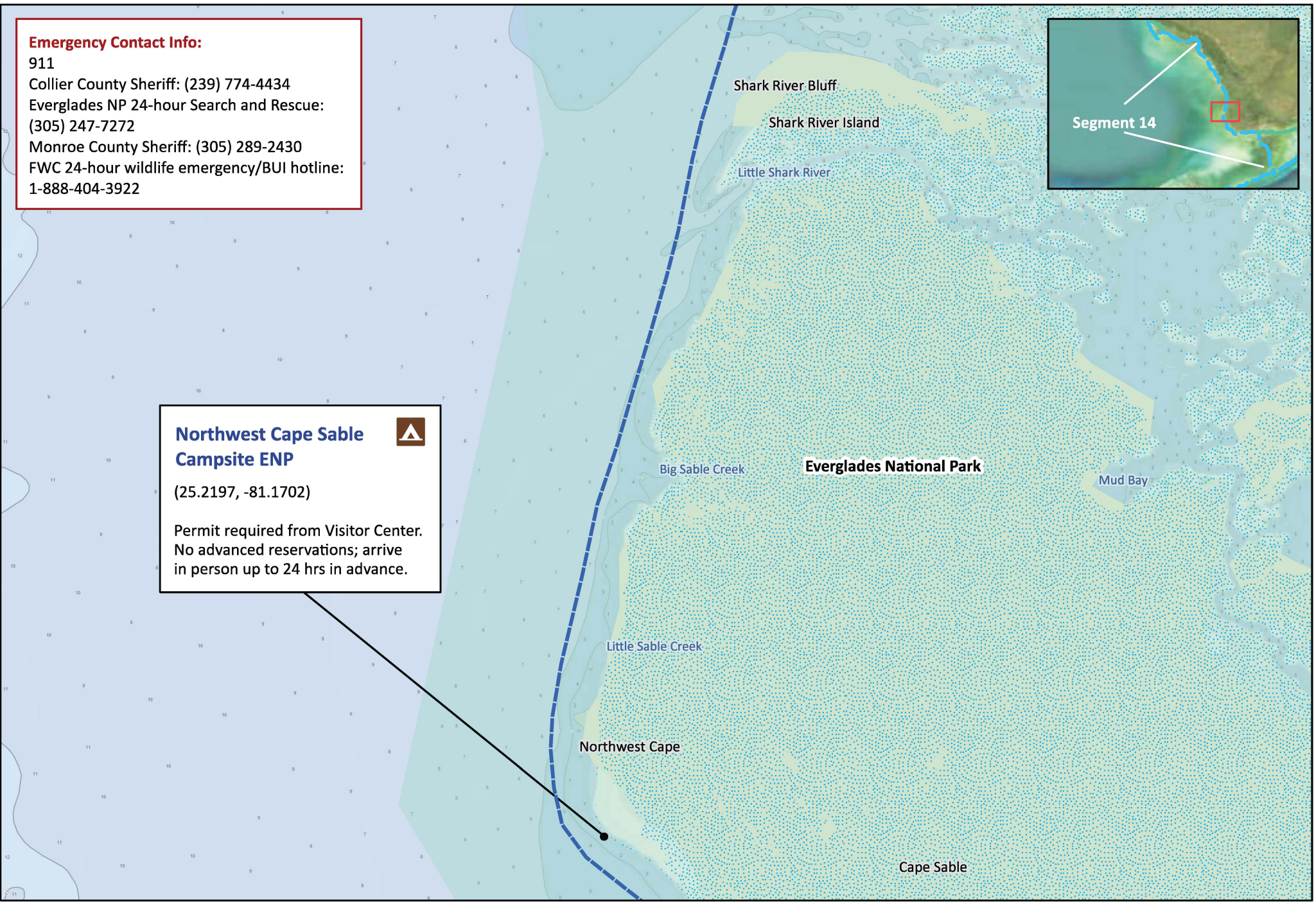


Emergency Contact Info:

911
Collier County Sheriff: (239) 774-4434
Everglades NP 24-hour Search and Rescue:
(305) 247-7272
Monroe County Sheriff: (305) 289-2430
FWC 24-hour wildlife emergency/BUI hotline:
1-888-404-3922



**Northwest Cape Sable
Campsite ENP** 
(25.2197, -81.1702)
Permit required from Visitor Center.
No advanced reservations; arrive
in person up to 24 hrs in advance.

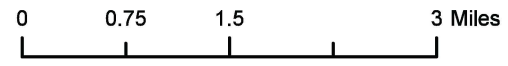


Florida Circumnavigational Saltwater Paddling Trail

Segment 14: Everglades/Florida Bay (Map 5 of 9)

Begin: Everglades City
End: Long Key State Park

Distance: 99.5 miles (Gulf side); 126.5 miles (Wilderness Waterway)
Duration: 9 days (Gulf side); 11 days (Wilderness Waterway)

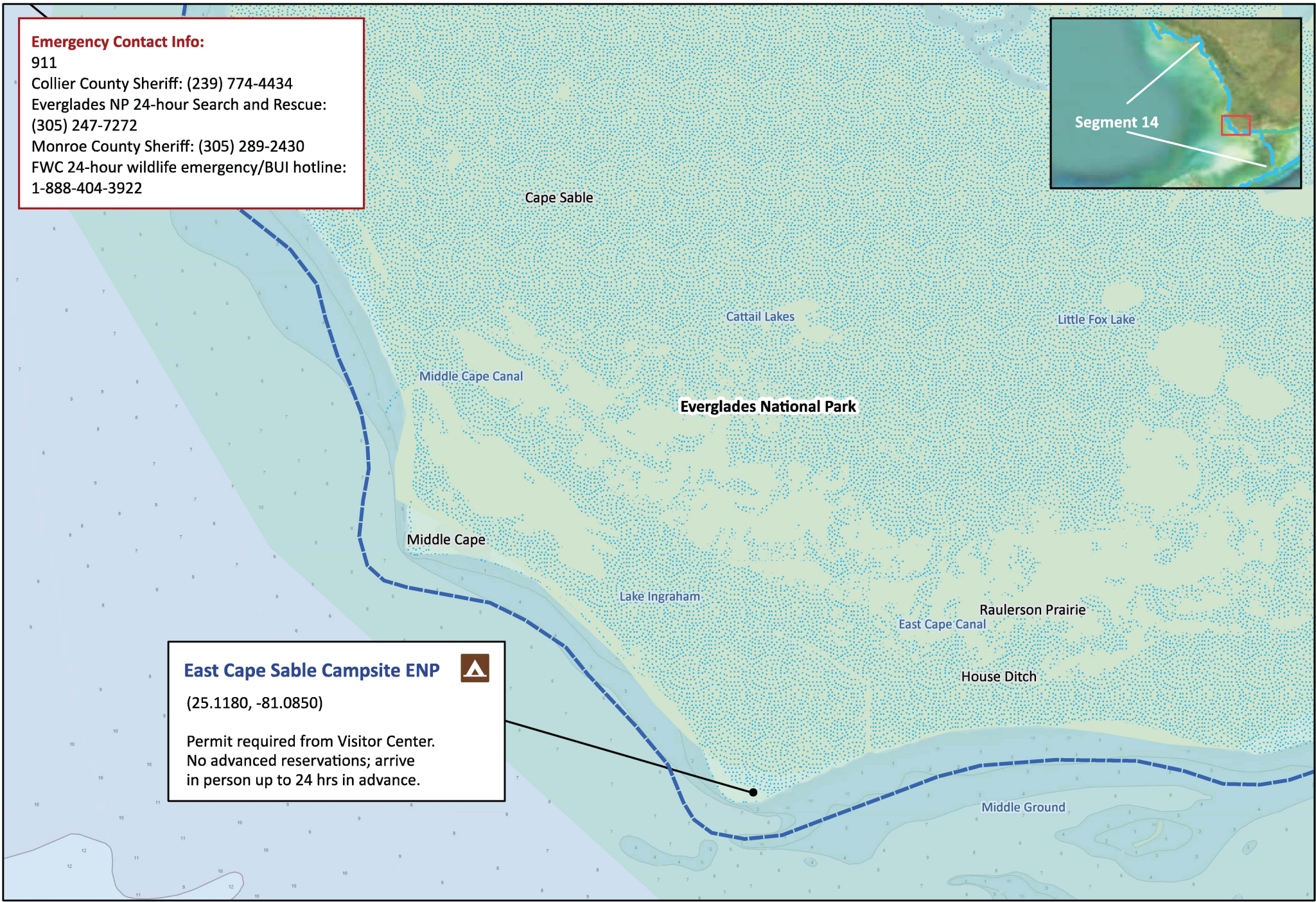
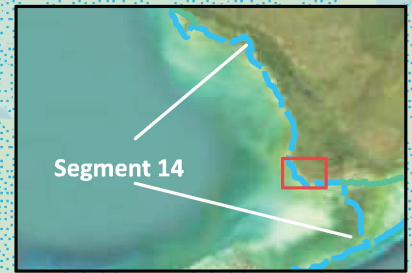



Disclaimer: This guide is intended as an aid to navigation only. A Global Positioning System (GPS) unit is required and persons are encouraged to supplement these maps with NOAA charts or other maps.
Updated: 11/25/2024



Emergency Contact Info:

911
Collier County Sheriff: (239) 774-4434
Everglades NP 24-hour Search and Rescue:
(305) 247-7272
Monroe County Sheriff: (305) 289-2430
FWC 24-hour wildlife emergency/BUI hotline:
1-888-404-3922



East Cape Sable Campsite ENP 
(25.1180, -81.0850)
Permit required from Visitor Center.
No advanced reservations; arrive
in person up to 24 hrs in advance.

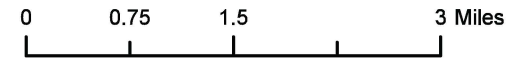


Florida Circumnavigational Saltwater Paddling Trail

Segment 14: Everglades/Florida Bay (Map 6 of 9)

Begin: Everglades City
End: Long Key State Park

Distance: 99.5 miles (Gulf side); 126.5 miles (Wilderness Waterway)
Duration: 9 days (Gulf side); 11 days (Wilderness Waterway)

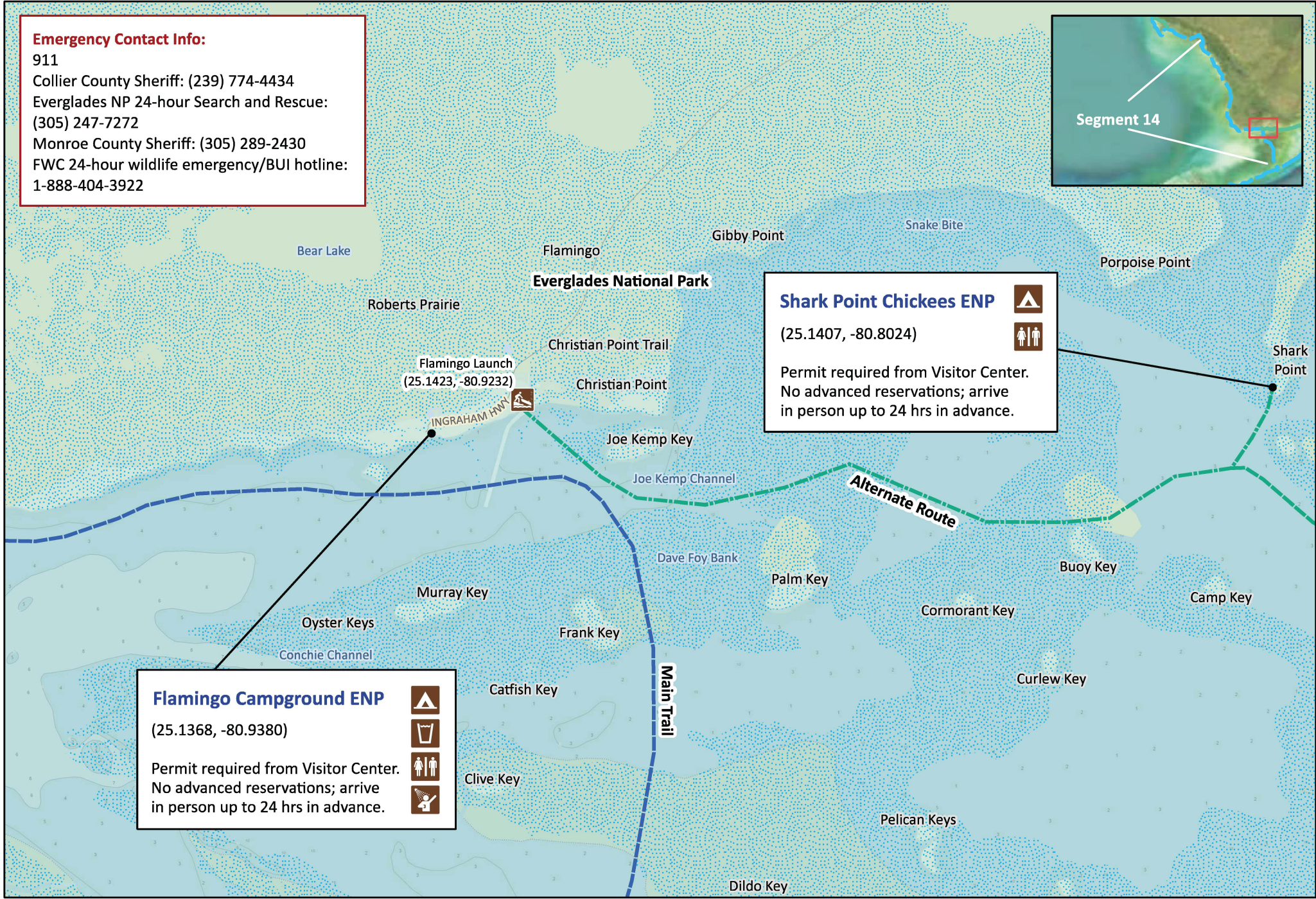
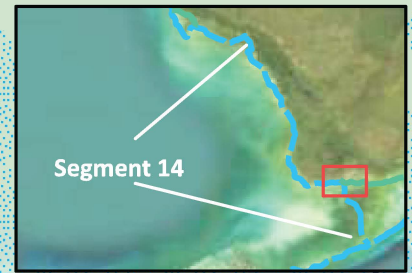


Disclaimer: This guide is intended as an aid to navigation only. A Global Positioning System (GPS) unit is required and persons are encouraged to supplement these maps with NOAA charts or other maps.
Updated: 11/25/2024



Emergency Contact Info:

911
Collier County Sheriff: (239) 774-4434
Everglades NP 24-hour Search and Rescue:
(305) 247-7272
Monroe County Sheriff: (305) 289-2430
FWC 24-hour wildlife emergency/BUI hotline:
1-888-404-3922



Flamingo Campground ENP

(25.1368, -80.9380)

Permit required from Visitor Center.
No advanced reservations; arrive
in person up to 24 hrs in advance.



Shark Point Chickees ENP

(25.1407, -80.8024)

Permit required from Visitor Center.
No advanced reservations; arrive
in person up to 24 hrs in advance.

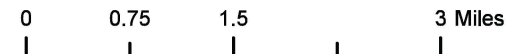


Florida Circumnavigational Saltwater Paddling Trail

Segment 14: Everglades/Florida Bay (Map 7 of 9)

Begin: Everglades City
End: Long Key State Park

Distance: 99.5 miles (Gulf side); 126.5 miles (Wilderness Waterway)
Duration: 9 days (Gulf side); 11 days (Wilderness Waterway)



Disclaimer: This guide is intended as an aid to navigation only. A Global Positioning System (GPS) unit is required and persons are encouraged to supplement these maps with NOAA charts or other maps.
Updated: 11/25/2024



Emergency Contact Info:

911
Collier County Sheriff: (239) 774-4434
Everglades NP 24-hour Search and Rescue:
(305) 247-7272
Monroe County Sheriff: (305) 289-2430
FWC 24-hour wildlife emergency/BUI hotline:
1-888-404-3922

**Johnson Key Chickee
Campsite ENP**

(25.0517, -80.9072)

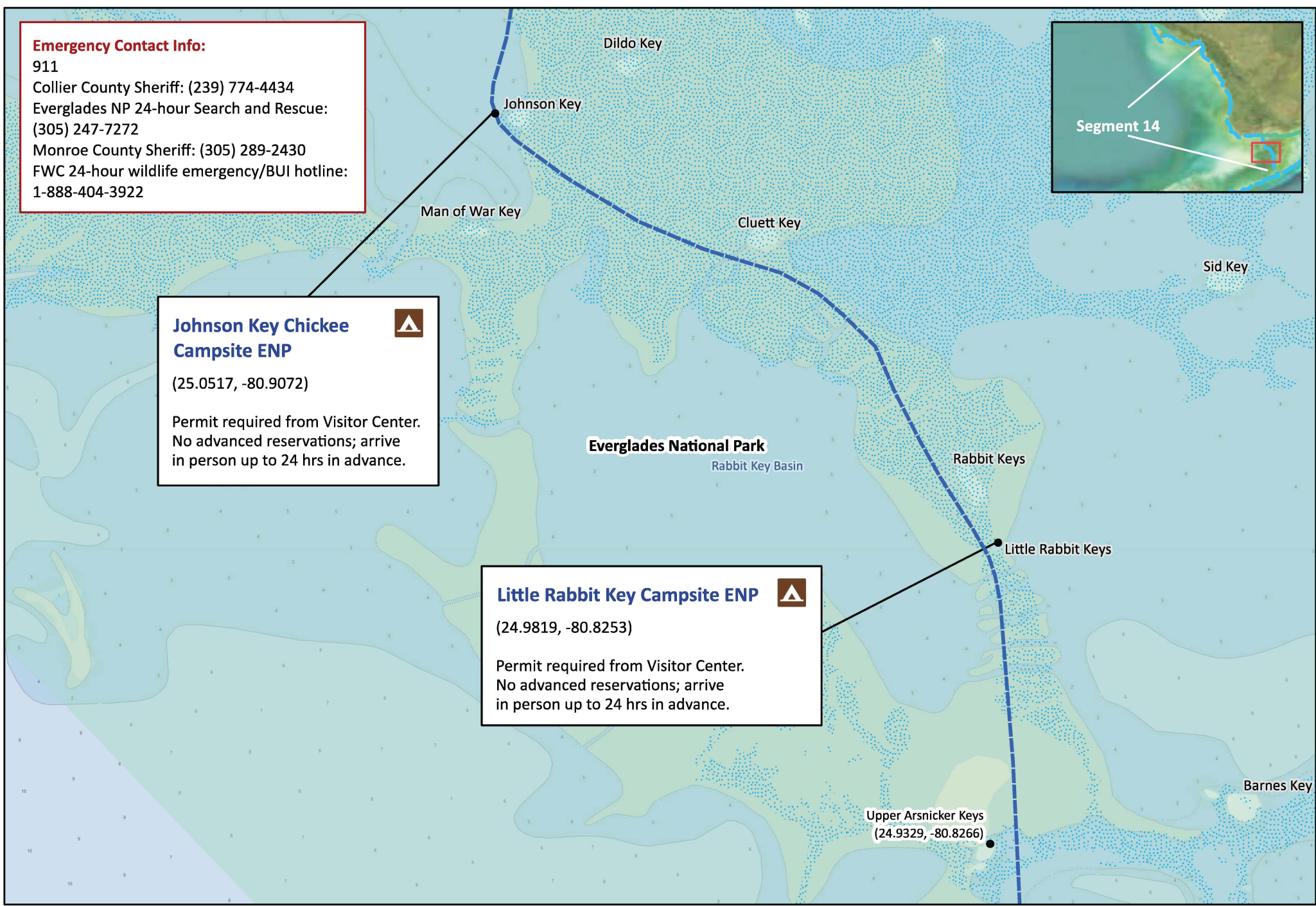
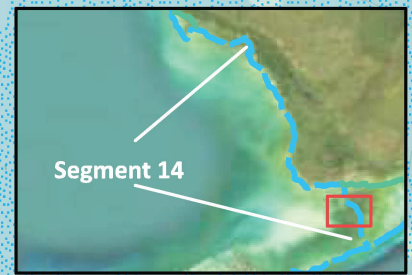
Permit required from Visitor Center.
No advanced reservations; arrive
in person up to 24 hrs in advance.



Little Rabbit Key Campsite ENP

(24.9819, -80.8253)

Permit required from Visitor Center.
No advanced reservations; arrive
in person up to 24 hrs in advance.

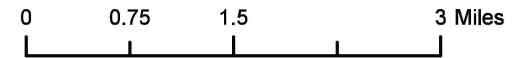


Florida Circumnavigational Saltwater Paddling Trail

Segment 14: Everglades/Florida Bay (Map 8 of 9)

Begin: Everglades City
End: Long Key State Park

Distance: 99.5 miles (Gulf side); 126.5 miles (Wilderness Waterway)
Duration: 9 days (Gulf side); 11 days (Wilderness Waterway)

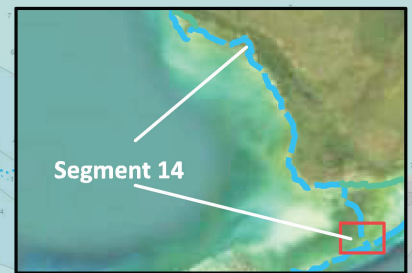


Disclaimer: This guide is intended as an aid to navigation only. A Global Positioning System (GPS) unit is required and persons are encouraged to supplement these maps with NOAA charts or other maps.
Updated: 11/25/2024



Emergency Contact Info:

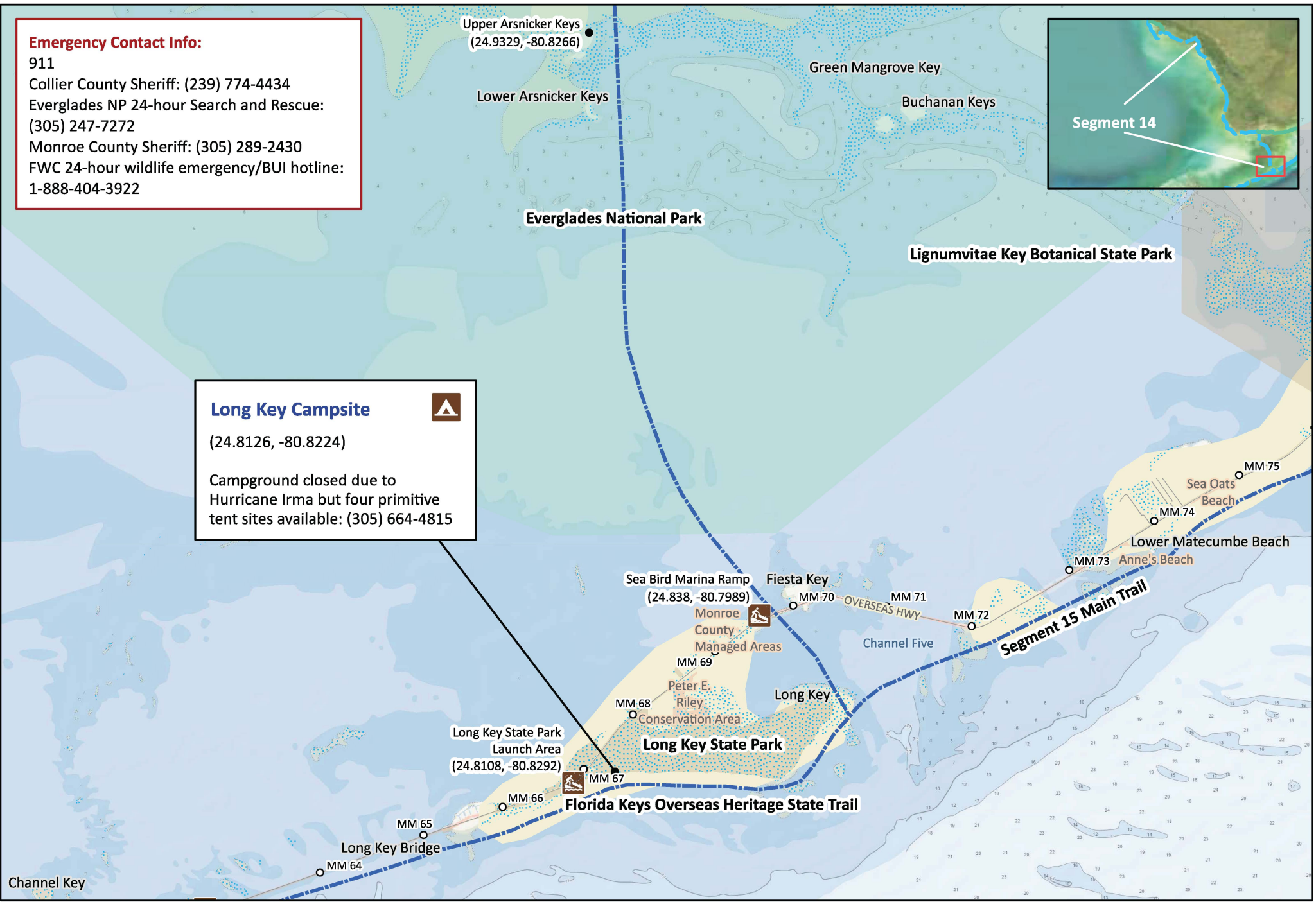
911
Collier County Sheriff: (239) 774-4434
Everglades NP 24-hour Search and Rescue:
(305) 247-7272
Monroe County Sheriff: (305) 289-2430
FWC 24-hour wildlife emergency/BUI hotline:
1-888-404-3922



Long Key Campsite

(24.8126, -80.8224)

Campground closed due to Hurricane Irma but four primitive tent sites available: (305) 664-4815

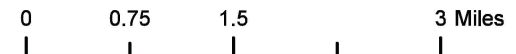


Florida Circumnavigational Saltwater Paddling Trail

Segment 14: Everglades/Florida Bay (Map 9 of 9)

Begin: Everglades City
End: Long Key State Park

Distance: 99.5 miles (Gulf side); 126.5 miles (Wilderness Waterway)
Duration: 9 days (Gulf side); 11 days (Wilderness Waterway)



Disclaimer: This guide is intended as an aid to navigation only. A Global Positioning System (GPS) unit is required and persons are encouraged to supplement these maps with NOAA charts or other maps.
Updated: 11/25/2024

