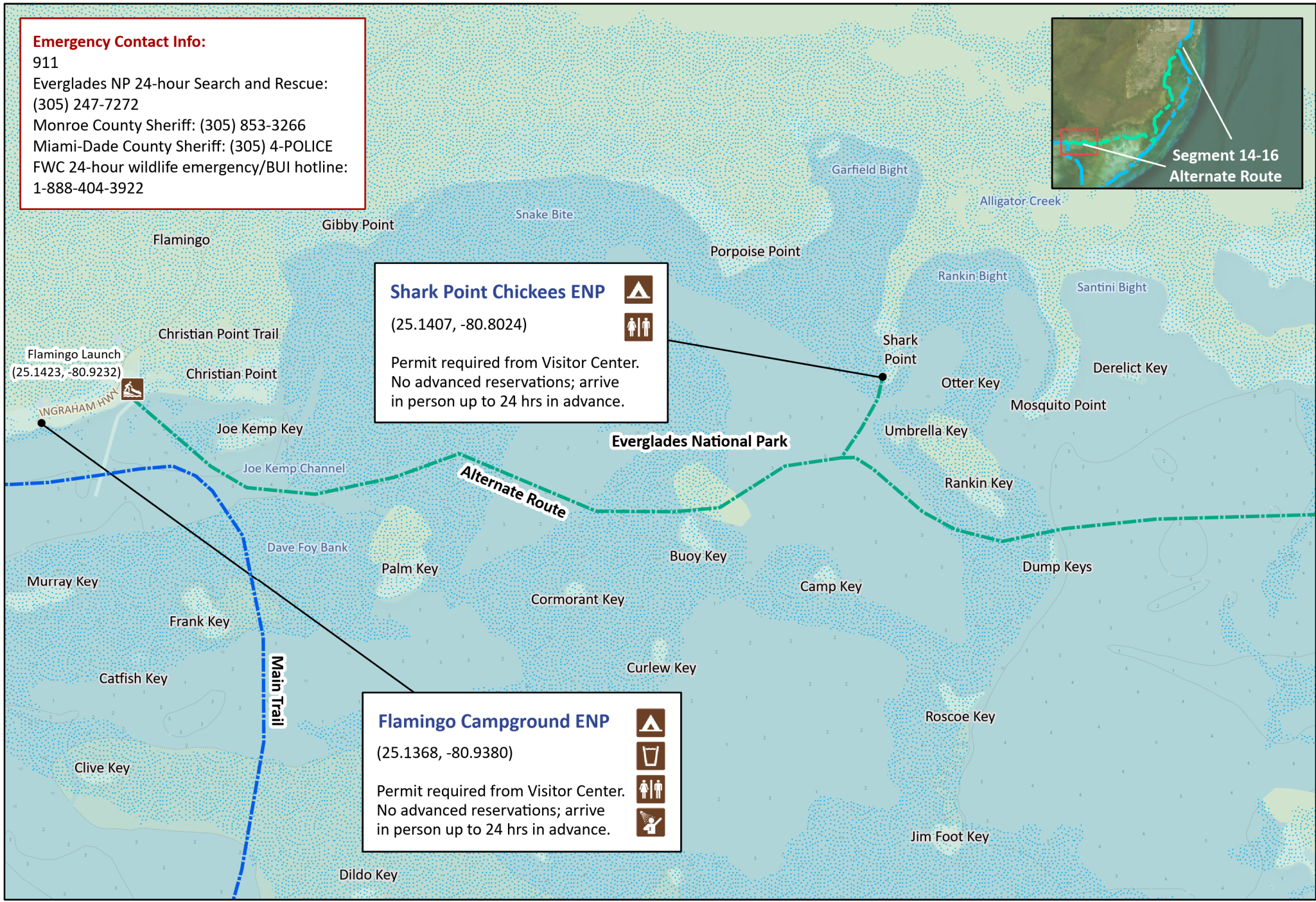
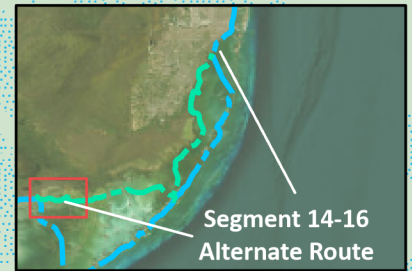


Emergency Contact Info:

911
Everglades NP 24-hour Search and Rescue:
(305) 247-7272
Monroe County Sheriff: (305) 853-3266
Miami-Dade County Sheriff: (305) 4-POLICE
FWC 24-hour wildlife emergency/BUI hotline:
1-888-404-3922



Shark Point Chickees ENP
(25.1407, -80.8024)
Permit required from Visitor Center.
No advanced reservations; arrive
in person up to 24 hrs in advance.

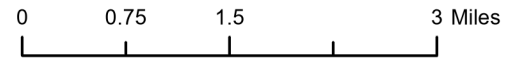
Flamingo Campground ENP
(25.1368, -80.9380)
Permit required from Visitor Center.
No advanced reservations; arrive
in person up to 24 hrs in advance.



Florida Circumnavigational Saltwater Paddling Trail
Segment 14-16: Keys Alternate Mainland Route (Map 1 of 6)

Begin: Flamingo ENP
End: Matheson Hammock Park

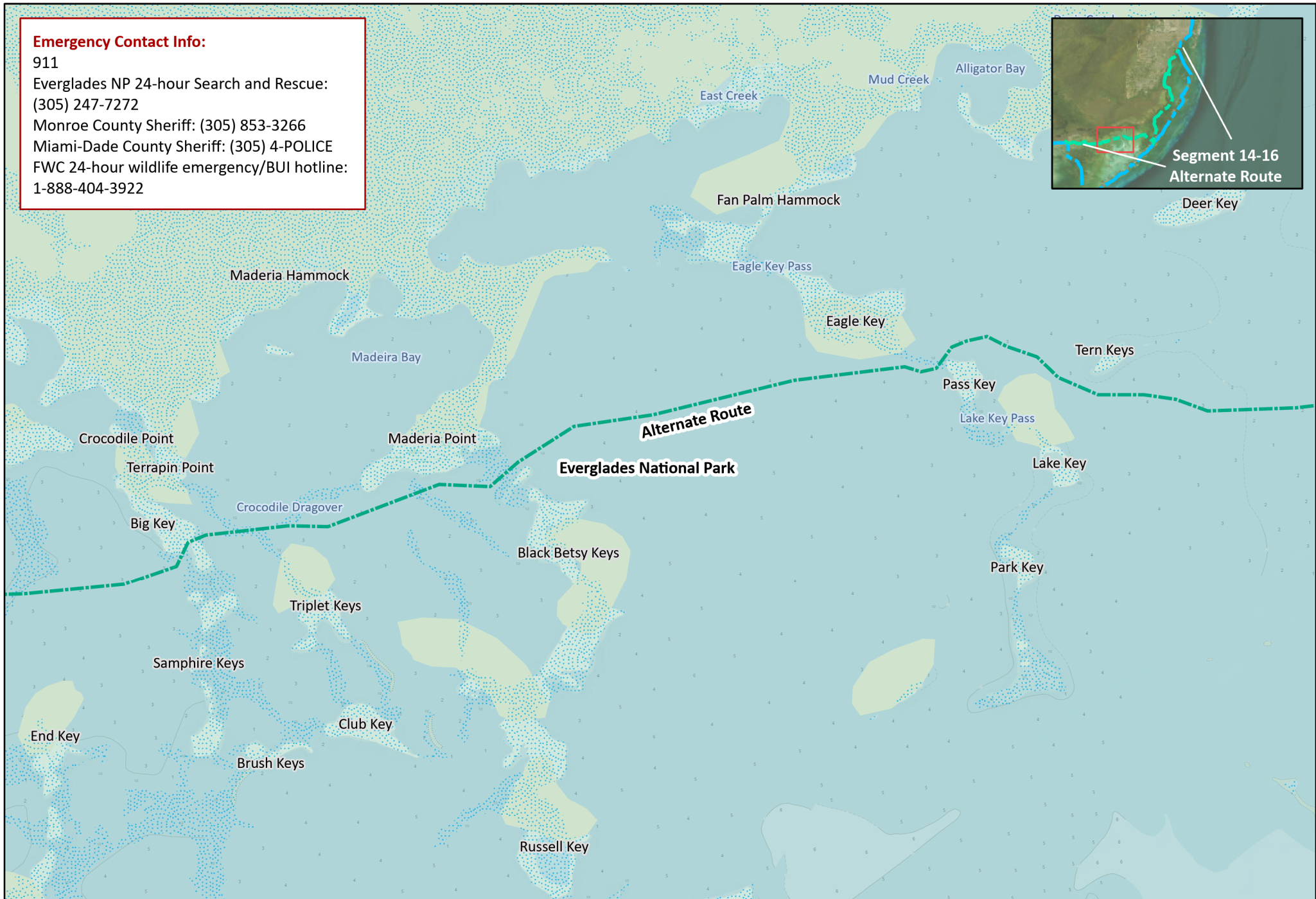
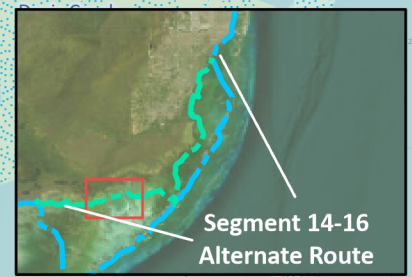
Distance: 75-85 miles depending on route
Duration: Variable



Disclaimer: This guide is intended as an aid to navigation only. A Global Positioning System (GPS) unit is required and persons are encouraged to supplement these maps with NOAA charts or other maps.
Updated: 2/19/2025

Emergency Contact Info:

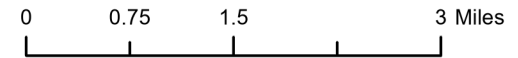
911
Everglades NP 24-hour Search and Rescue:
(305) 247-7272
Monroe County Sheriff: (305) 853-3266
Miami-Dade County Sheriff: (305) 4-POLICE
FWC 24-hour wildlife emergency/BUI hotline:
1-888-404-3922



Florida Circumnavigational Saltwater Paddling Trail
Segment 14-16: Keys Alternate Mainland Route (Map 2 of 6)

Begin: Flamingo ENP
End: Matheson Hammock Park

Distance: 75-85 miles depending on route
Duration: Variable

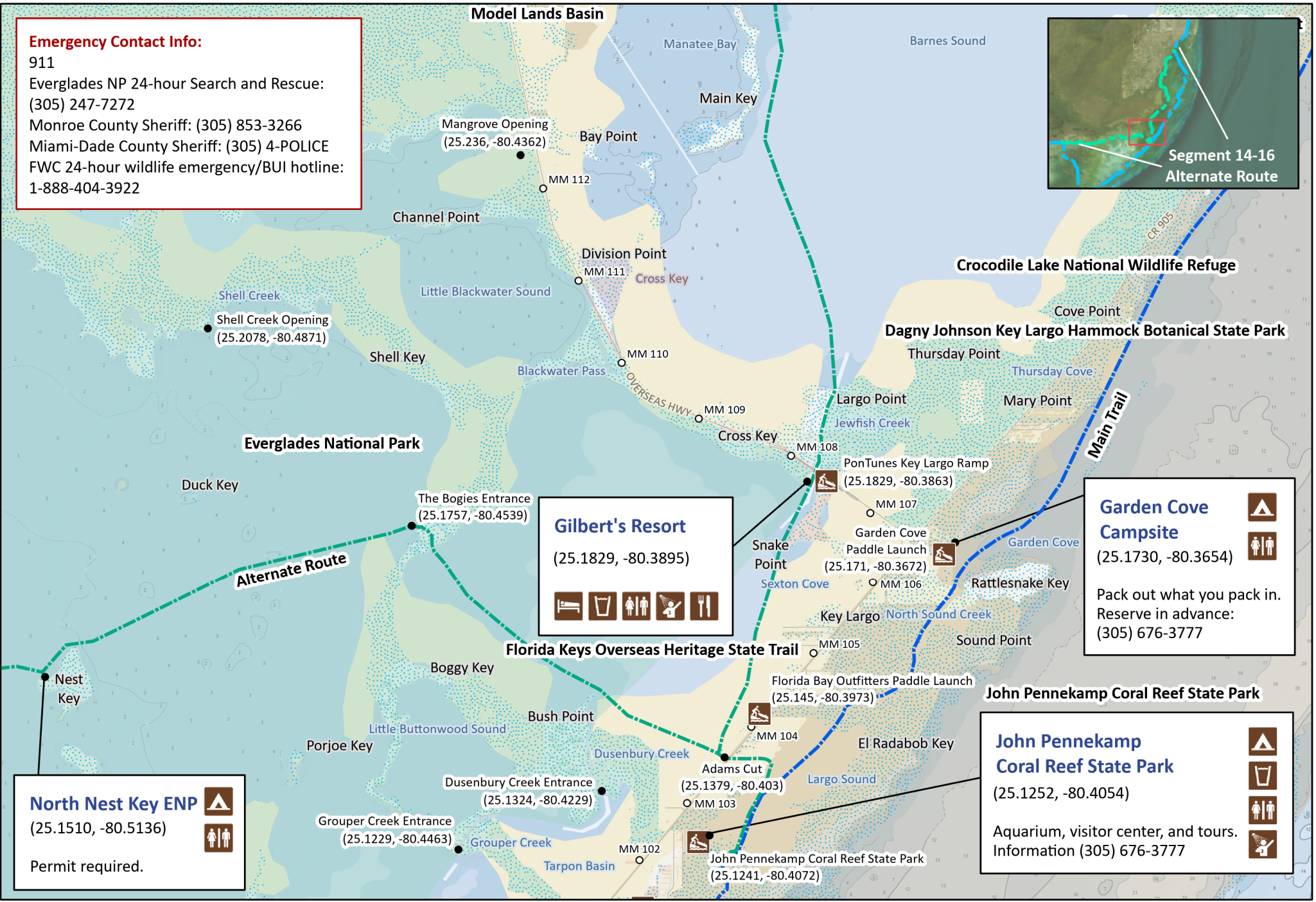
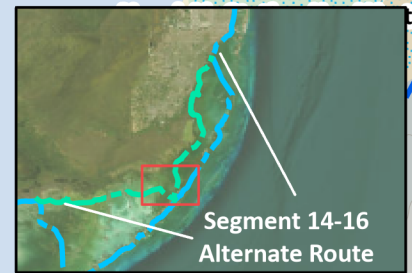


Disclaimer: This guide is intended as an aid to navigation only. A Global Positioning System (GPS) unit is required and persons are encouraged to supplement these maps with NOAA charts or other maps.
Updated: 2/19/2025



Emergency Contact Info:

911
Everglades NP 24-hour Search and Rescue:
(305) 247-7272
Monroe County Sheriff: (305) 853-3266
Miami-Dade County Sheriff: (305) 4-POLICE
FWC 24-hour wildlife emergency/BUI hotline:
1-888-404-3922



Gilbert's Resort
(25.1829, -80.3895)

Garden Cove Campsite
(25.1730, -80.3654)

Pack out what you pack in.
Reserve in advance:
(305) 676-3777

John Pennekamp Coral Reef State Park
(25.1252, -80.4054)

Aquarium, visitor center, and tours.
Information (305) 676-3777

North Nest Key ENP
(25.1510, -80.5136)

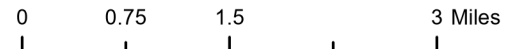
Permit required.



Florida Circumnavigational Saltwater Paddling Trail
Segment 14-16: Keys Alternate Mainland Route (Map 3 of 6)

Begin: Flamingo ENP
End: Matheson Hammock Park

Distance: 75-85 miles depending on route
Duration: Variable



Disclaimer: This guide is intended as an aid to navigation only. A Global Positioning System (GPS) unit is required and persons are encouraged to supplement these maps with NOAA charts or other maps.
Updated: 2/19/2025



Emergency Contact Info:

911
Everglades NP 24-hour Search and Rescue:
(305) 247-7272
Monroe County Sheriff: (305) 853-3266
Miami-Dade County Sheriff: (305) 4-POLICE
FWC 24-hour wildlife emergency/BUI hotline:
1-888-404-3922

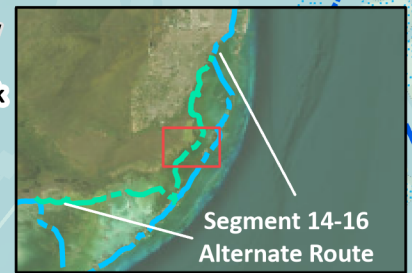
Alabama Jaks

(25.2914, -80.3790)

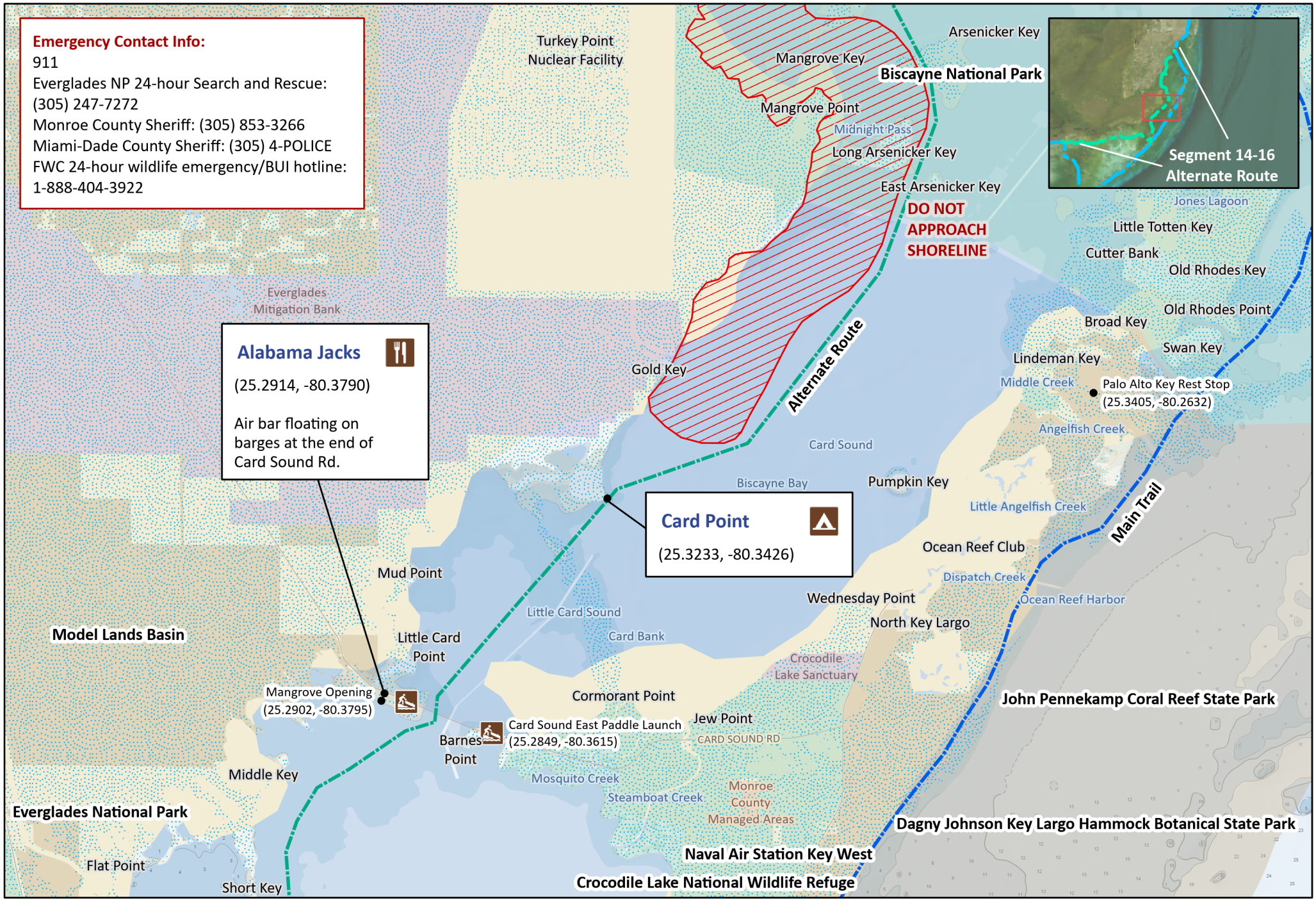
Air bar floating on barges at the end of Card Sound Rd.

Card Point

(25.3233, -80.3426)



Segment 14-16 Alternate Route



Model Lands Basin

Everglades National Park

John Pennekamp Coral Reef State Park

Dagny Johnson Key Largo Hammock Botanical State Park

Crocodile Lake National Wildlife Refuge

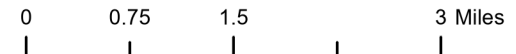


Florida Circumnavigational Saltwater Paddling Trail

Segment 14-16: Keys Alternate Mainland Route (Map 4 of 6)

Begin: Flamingo ENP
End: Matheson Hammock Park

Distance: 75-85 miles depending on route
Duration: Variable

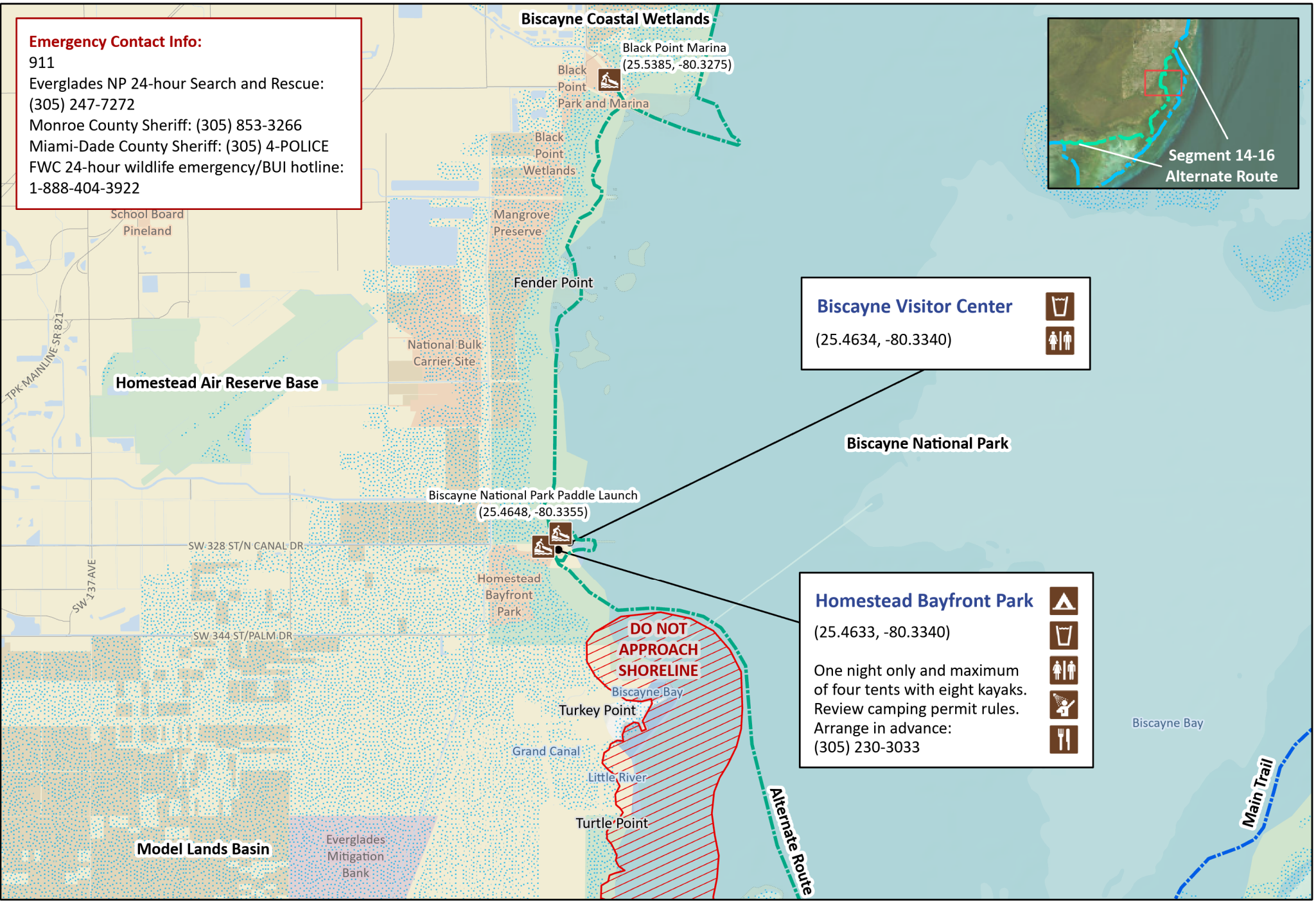
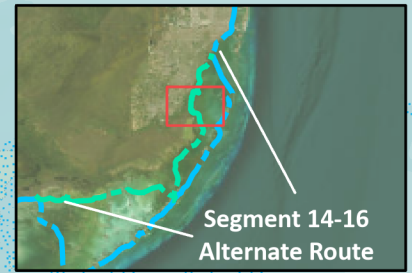


Disclaimer: This guide is intended as an aid to navigation only. A Global Positioning System (GPS) unit is required and persons are encouraged to supplement these maps with NOAA charts or other maps.
Updated: 2/19/2025



Emergency Contact Info:

911
Everglades NP 24-hour Search and Rescue:
(305) 247-7272
Monroe County Sheriff: (305) 853-3266
Miami-Dade County Sheriff: (305) 4-POLICE
FWC 24-hour wildlife emergency/BUI hotline:
1-888-404-3922



Biscayne Visitor Center
(25.4634, -80.3340)

- 🗑️
- 🚻

Homestead Bayfront Park
(25.4633, -80.3340)

One night only and maximum of four tents with eight kayaks. Review camping permit rules. Arrange in advance: (305) 230-3033

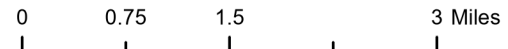
- ⛶
- 🗑️
- 🚻
- 🦋
- 🍴



Florida Circumnavigational Saltwater Paddling Trail
Segment 14-16: Keys Alternate Mainland Route (Map 5 of 6)

Begin: Flamingo ENP
End: Matheson Hammock Park

Distance: 75-85 miles depending on route
Duration: Variable

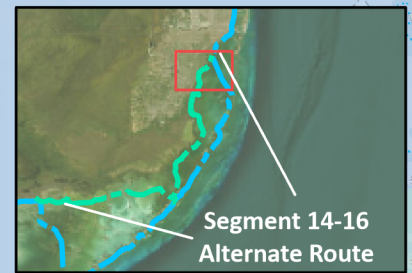



Disclaimer: This guide is intended as an aid to navigation only. A Global Positioning System (GPS) unit is required and persons are encouraged to supplement these maps with NOAA charts or other maps.
Updated: 2/19/2025



Emergency Contact Info:

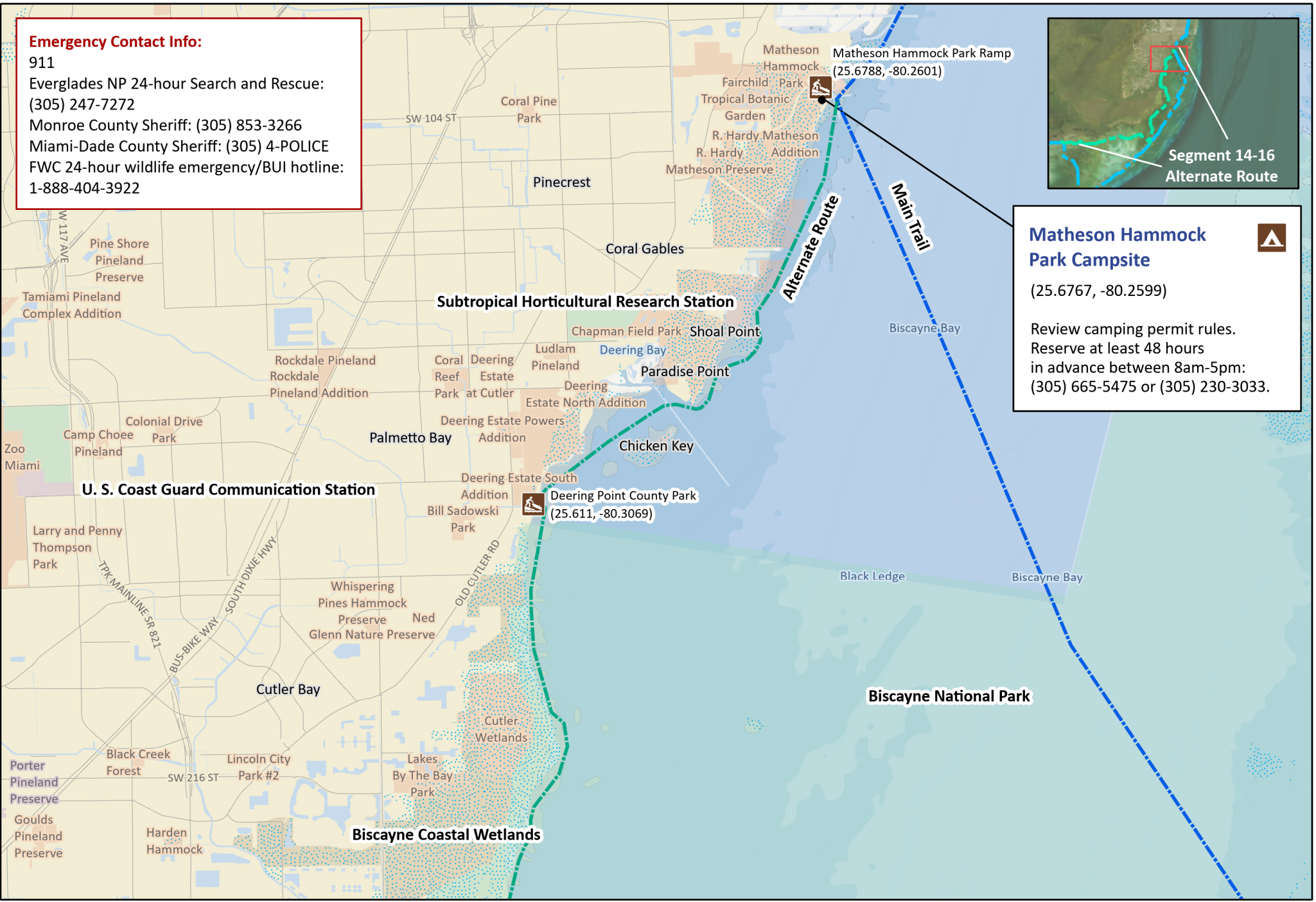
911
Everglades NP 24-hour Search and Rescue:
(305) 247-7272
Monroe County Sheriff: (305) 853-3266
Miami-Dade County Sheriff: (305) 4-POLICE
FWC 24-hour wildlife emergency/BUI hotline:
1-888-404-3922



Matheson Hammock Park Campsite 

(25.6767, -80.2599)

Review camping permit rules.
Reserve at least 48 hours
in advance between 8am-5pm:
(305) 665-5475 or (305) 230-3033.



U. S. Coast Guard Communication Station

Subtropical Horticultural Research Station

Deering Point County Park
(25.611, -80.3069)

Biscayne National Park

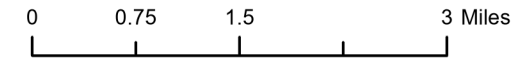
Biscayne Coastal Wetlands



Florida Circumnavigational Saltwater Paddling Trail
Segment 14-16: Keys Alternate Mainland Route (Map 6 of 6)

Begin: Flamingo ENP
End: Matheson Hammock Park

Distance: 75-85 miles depending on route
Duration: Variable



Disclaimer: This guide is intended as an aid to navigation only. A Global Positioning System (GPS) unit is required and persons are encouraged to supplement these maps with NOAA charts or other maps.
Updated: 2/19/2025





Florida Circumnavigational Saltwater Paddling Trail

Keys Alternate Mainland Route

Segments 14, 15 & 16

Emergency Contact Information:

911

Everglades National Park 24-hour search and rescue: 305-247-7272

Collier County Sheriff's Office: 239-774-4434

Monroe County Sheriff's Office: 305-289-2430

Dade County Sheriff's Office: ADD phone #Florida Fish and Wildlife Conservation Commission 24-hour wildlife emergency/boating under the influence hotline: 1-888-404-3922

FPTA Regions: G and H

Begin: Flamingo, Everglades National Park

End: Matheson Hammock Park CT Campsite, Miami

Estimated Mileage: 83 miles (plus an additional 111 miles to paddle the Florida Keys Overseas Paddling Trail to Ft. Zachary Taylor Historic State Park)

Duration: 6 days (Plus an additional 9 days to paddle the Florida Keys Overseas Paddling Trail to Ft. Zachary Taylor Historic State Park).

Special Considerations: The alternate Florida Keys route stays close to the mainland, creating a more sheltered passage when weather conditions are challenging. The original route that borders the Atlantic side of the Keys is more exposed and has long stretches of open water between stops. Most through paddlers time their long trek around the state to be in the Keys and Everglades during the winter months when bugs are fewer. However, winter in the Keys may bring high winds and many days come with small craft advisories. Be aware that temperatures can also get surprisingly cold in the evenings, even into the 40s on rare occasions. Make sure to check the weather forecast frequently and pay attention to tides that make some areas challenging at low water; follow the depths outlined on your navigational charts. Even though the alternate route is more sheltered, you'll still be entering some long stretches of open water

and you must be vigilant. Avoid getting too close to fishing boats poling in the shallows as anglers are often sight-fishing for bonefish, permit, and tarpon on these flats.

You will have a choice of several routes from North Nest Key to Miami depending on wind and weather conditions, a need for resupply, etc. It is also possible to join the original Circumnavigational Trail (CT) route on the Atlantic side of the Keys at several points if conditions are favorable.

Permits in Everglades National Park:

A permit allows the permit holder and their group to overnight camp at designated campsites within the Marjory Stoneman Douglas Wilderness. Permits are required for camping on Shark Point Chickee and North Nest Key and permit reservations can be made online year-round 90 days before on a rolling basis. There is no longer a requirement to pick up hard copy permits at the visitor centers within 24 hours. Instead, you can reserve campsites in advance online. Make sure to print out the email confirmation and have it with you if approached by law enforcement. During the summer season permits are free but are still required (mid-April through mid-November), not a favorable time to paddle in the Everglades due to intense heat, insects, and frequent storms. Permits are available 24/7 by contacting <https://www.recreation.gov/permits/4675314>.

1. ENP Flamingo to ENP Shark Point Chickee, 8.1 miles

The U.S. National Park Service, Everglades National Park manages a campground at Flamingo and a small store, your last chance to buy supplies for several days depending on which route you select to get to Miami. The campground is about a mile before the marina and is accessible by water at high tide. At low tide, you might have to wade through muds. During the busy winter season, Flamingo Campground reservations can either be made online or call 1-877-444-6777 after November 20th. Reservations are not required in the summer.

The Shark Point Chickee is a favorite roosting spot for birds and is usually coated in thick droppings. Bring a tarp or plastic sheet to keep your tent and gear clean. There is a portable restroom on the platform.

2. ENP Shark Point Chickee to ENP North Nest Key, 19 miles

From Shark Point Chickee paddle eastward through the ‘Croc Drag’ opening and north of Pass Key to approach Nest Key on the north side, the only place where camping is permitted. The waters are shallow and it may be challenging to find a passage through the confusing landscape. Follow navigation charts closely. There is a portable restroom on the west end of Nest Key at the end of a dock. There are no amenities on the island and it is a popular destination for powerboats, especially on weekends and holidays.

3. ENP North Nest Key to John Pennekamp Coral Reef State Park, 10 miles

From Nest Key paddle about 3.6 miles east to the entrance of a pleasant mangrove tunnel known as the ‘Boggies’ (N 25.174200 W -80.451642), leading to Blackwater Sound. Exiting the Boggies, head 3.6 miles southeast to Adams Cut and paddle a further 1.5 miles south to

Pennekamp State Park. If you are in need of paddlecraft supplies, about a half mile north of the entrance to Adams Cut, you'll find Florida Bay Outfitters, one of the bigger outfitters in the Keys. Once you are through the cut, Pennekamp Coral Reef State Park is just over a mile to the south. Pennekamp is a popular State Park, so make sure you make reservations in advance. There is a sandy landing for paddlecraft with a 250-yard walk to the camping area. After your stay at Pennekamp, you can head south and begin the Florida Keys Overseas Paddling Trail to Key West. Once complete, resume your journey northward from Pennekamp.

4. John Pennekamp Coral Reef State Park to Card Point, 15.8 miles

After completing the Florida Keys Overseas Paddling Trail, start your northward journey from Pennekamp by paddling north to Adams Cut which will take you back into Blackwater Sound. Follow the shoreline north-northeast to the Jewfish Creek and U.S. 1 bridge. Gilberts Resort will be on your left as you enter Jewfish Creek. Once you pass through the creek, head north across Barnes Sound to the Card Point primitive campsite. Barnes Sound is a large body of water and on windy days can get quite rough. Short Key on the western shore has a nice beach landing if you need to take a break. Make sure to practice "Leave No Trace" principles.

5. Card Point to Homestead Bayfront Park, 12.6 miles

Leaving Card Point, keep a good distance away from the Turkey Point Nuclear Facility. Approaching the shoreline here between the cooling canals and the facility may attract a visit by security. About 1.5 miles north of the cooling towers is Homestead Bayfront Park. This is a Miami-Dade County Park. Look for a narrow mangrove-covered channel at the south end of this well-developed park to access a primitive camping area screened by a concrete wall. Be sure to get permission for camping here. Call ahead of time - 305-230-3033 (9 am- 5 pm). Camping is for CTers only, and only for one night and the group size is limited to a maximum of four tents with eight kayaks. [See permit rules here.](#)

There is a restaurant (closed on Mondays), restrooms, and an outdoor shower next to a swimming lagoon, picnic pavilions, and potable water.

Make time to see the visitor center at [Biscayne National Park](#), adjacent to Homestead Bayfront Park. Biscayne Bay is the largest marine park in the National Park System, with more than 180,000 acres of islands, mangrove shorelines, and undersea life. The park has a number of interesting conservation programs including a sea turtle nest monitoring project, which aims to survey and monitor sea turtle nesting beaches within the park to protect nests from natural predation and unintentional damage by park visitors.

6. Homestead Bayfront Park CT Campsite to Matheson Hammock Park CT Campsite, 17.1 miles

Proceeding along the shoreline there are a couple of good rest stops—the Black Point Marina about five miles north of Homestead Bayfront Park, and Deering Point County Park five miles further north. Manatees may be seen in the Black Point area. Keep your distance to avoid disturbing them and also evade their powerful tail action if one dives to get away from you.

Deering Point offers picnic pavilions, restrooms, potable water, and a few restaurants within walking distance. Heading north along the shore, you will pass a distinct Florida landscape feature, Mount Trashmore, a 225-foot high landfill site located between Coconut Creek and Deerfield Beach in northern Broward County. This is where Dade County's solid waste is disposed.

Matheson Hammock Park is a Miami-Dade County Park that offers a great primitive campsite for CTers only. Make sure to call and reserve a campsite at least 48 hours in advance: 305-665-5475 or 305-230-3033 during operating hours 8 am to 5 pm. [Please review camping permit rules here](#). The same rules apply for Homestead Bayfront Park. If you have time, walk about a mile through the park to the fantastic Fairchild Tropical Botanic Gardens to enjoy the lush landscape and Butterfly Conservatory. The Primary (outside route) and Alternate (inside route) merge at Matheson Hammock Park and continue northward to Oleta River State Park as the Primary route.