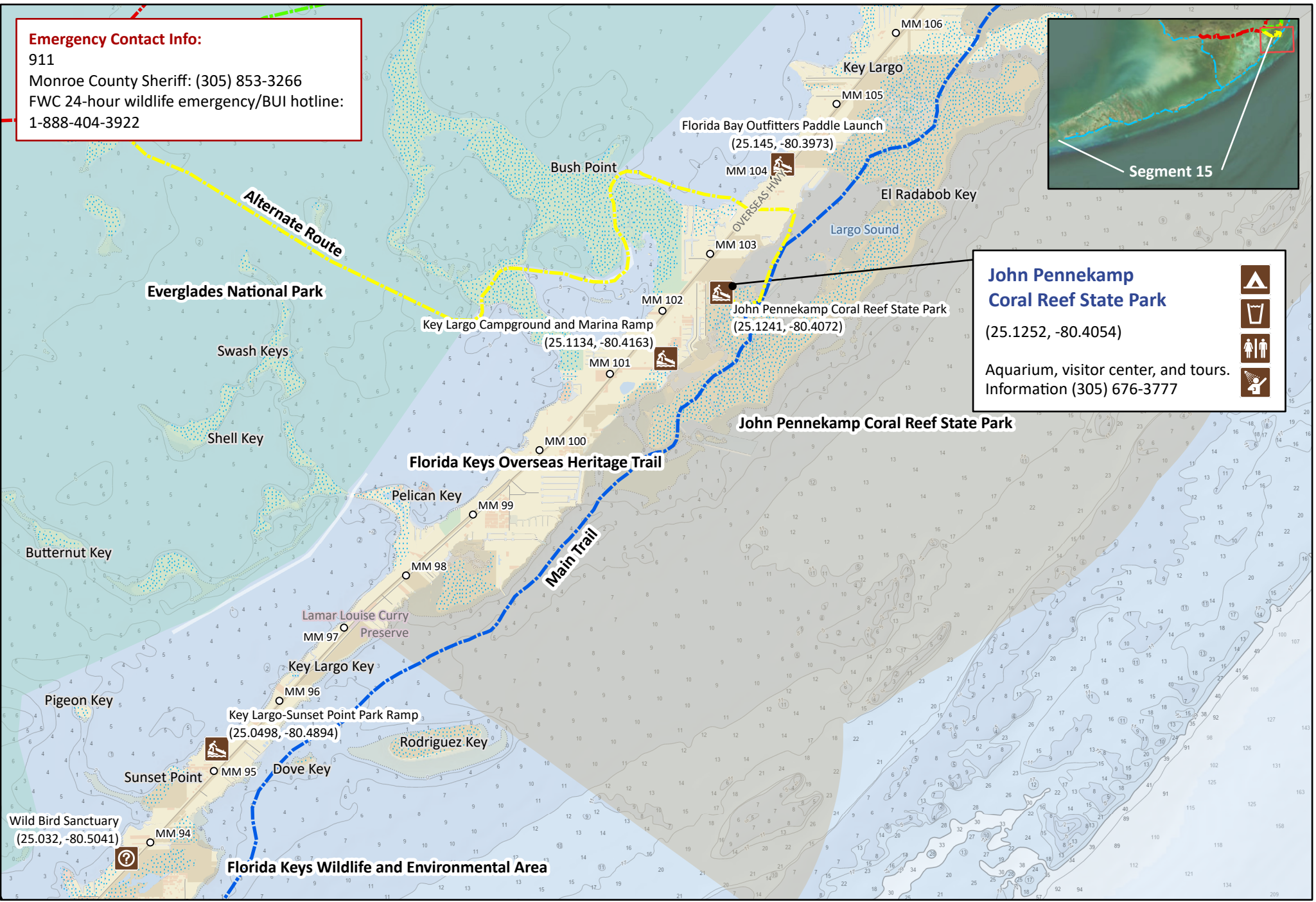
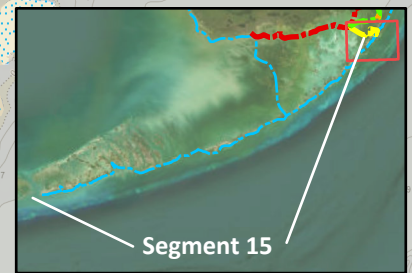


Emergency Contact Info:

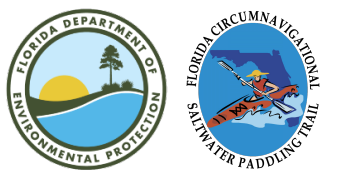
911
Monroe County Sheriff: (305) 853-3266
FWC 24-hour wildlife emergency/BUI hotline:
1-888-404-3922



John Pennekamp Coral Reef State Park
(25.1252, -80.4054)

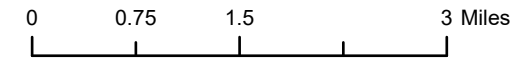
Aquarium, visitor center, and tours.
Information (305) 676-3777

-
-
-
-



Florida Circumnavigational Saltwater Paddling Trail
Segment 15: Florida Keys Overseas Paddling Trail (Map 1 of 8)

Begin: John Pennekamp State Park, Key Largo
End: Fort Zachary Taylor Historic State Park, Key West
Distance: 111 miles
Duration: 9-10 days



Disclaimer: This guide is intended as an aid to navigation only. A Global Positioning System (GPS) unit is required and persons are encouraged to supplement these maps with NOAA charts or other maps.
Updated: 1/2023



Emergency Contact Info:

911
Monroe County Sheriff: (305) 853-3266
FWC 24-hour wildlife emergency/BUI hotline:
1-888-404-3922

Coconut Palm Inn

(25.0124, -80.5179)

Reservations:
(305) 852-3017



**Tropic Vista Motel
Dive Center**

(25.0022, -80.5330)

Reservations:
(305) 852-8799



Creekside Inn

(25.0020, -80.5338)

Reservations:
(305) 852-2351



**Harry Harris
County Park**

(25.0247, -80.4942)



Island Bay Resort

(25.0165, -80.5133)

Reservations:
(305) 852-4087



**Conch On Inn
Motel**

(24.9856, -80.5450)

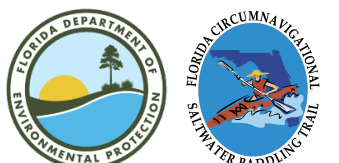
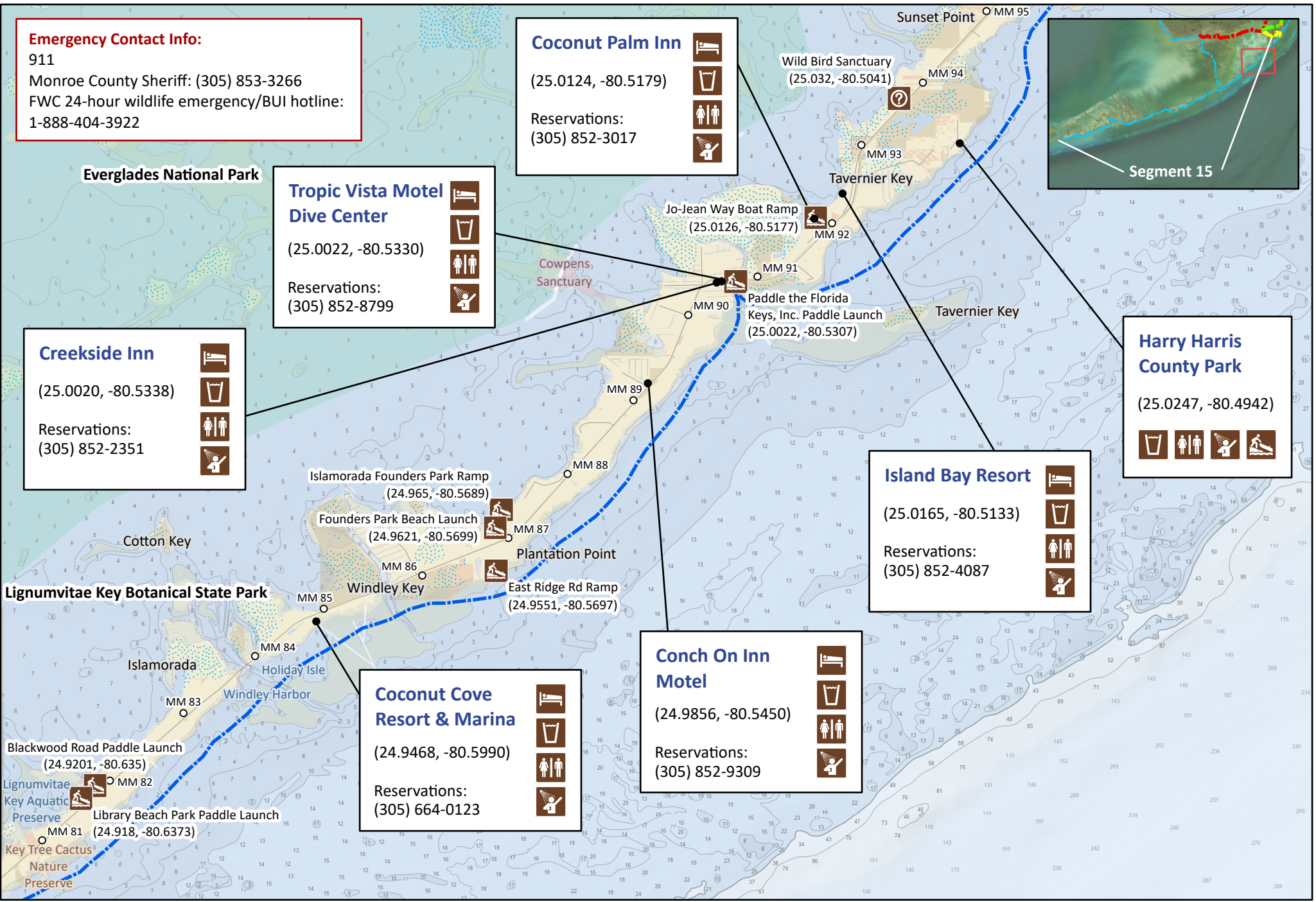
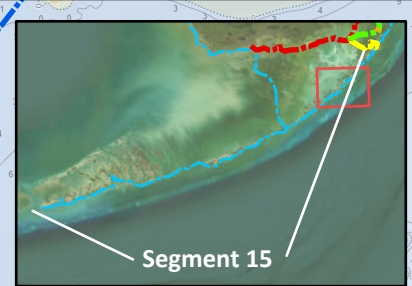
Reservations:
(305) 852-9309



**Coconut Cove
Resort & Marina**

(24.9468, -80.5990)

Reservations:
(305) 664-0123

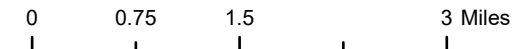


Florida Circumnavigational Saltwater Paddling Trail

Segment 15: Florida Keys Overseas Paddling Trail (Map 2 of 8)

Begin: John Pennekamp State Park, Key Largo
End: Fort Zachary Taylor Historic State Park, Key West

Distance: 111 miles
Duration: 9-10 days

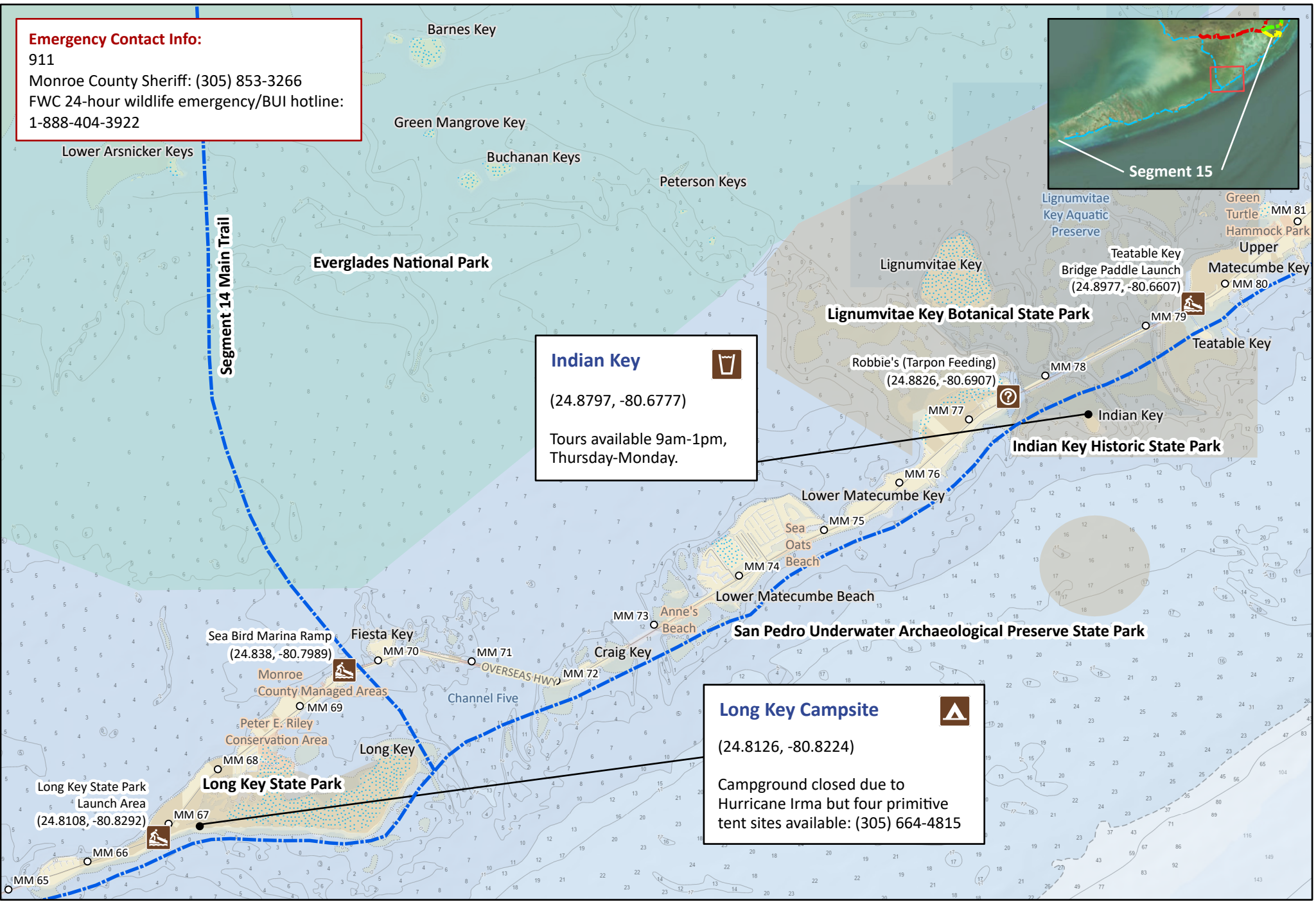
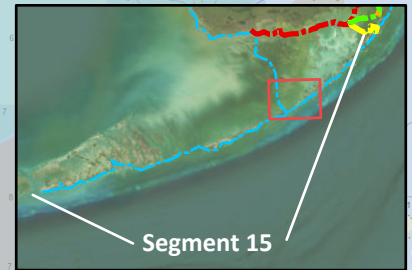


Disclaimer: This guide is intended as an aid to navigation only. A Global Positioning System (GPS) unit is required and persons are encouraged to supplement these maps with NOAA charts or other maps.
Updated: 1/2023




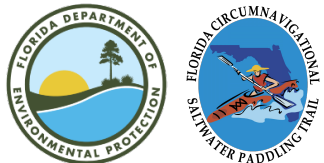
Emergency Contact Info:

911
Monroe County Sheriff: (305) 853-3266
FWC 24-hour wildlife emergency/BUI hotline:
1-888-404-3922



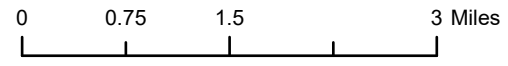
Indian Key 
(24.8797, -80.6777)
Tours available 9am-1pm,
Thursday-Monday.

Long Key Campsite 
(24.8126, -80.8224)
Campground closed due to
Hurricane Irma but four primitive
tent sites available: (305) 664-4815



Florida Circumnavigational Saltwater Paddling Trail
Segment 15: Florida Keys Overseas Paddling Trail (Map 3 of 8)

Begin: John Pennekamp State Park, Key Largo Distance: 111 miles
End: Fort Zachary Taylor Historic State Park, Key West Duration: 9-10 days



Disclaimer: This guide is intended as an aid to navigation only. A Global Positioning System (GPS) unit is required and persons are encouraged to supplement these maps with NOAA charts or other maps.
Updated: 1/2023



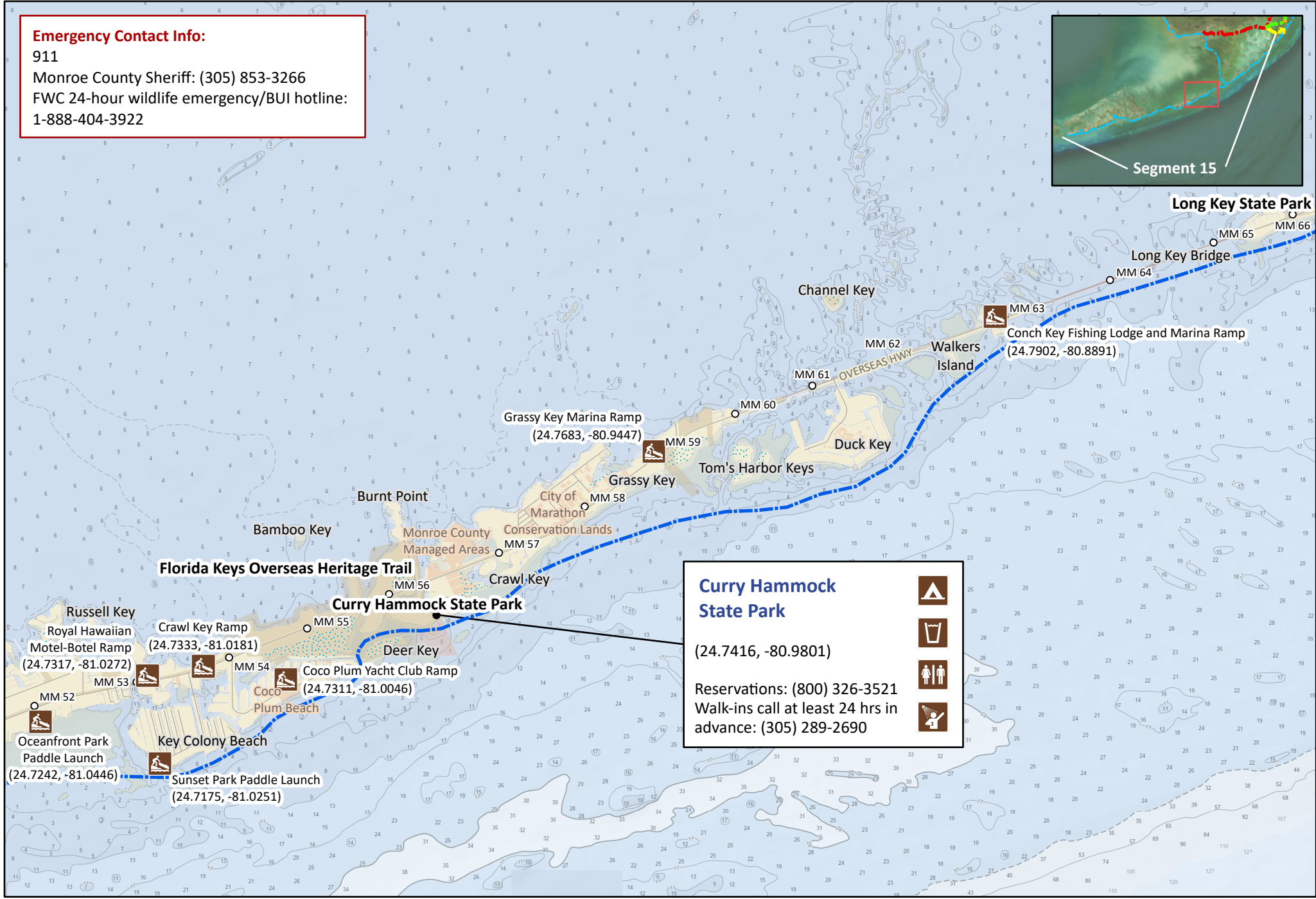
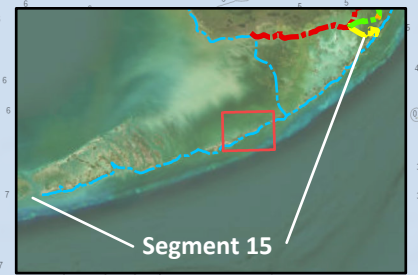
Emergency Contact Info:

911

Monroe County Sheriff: (305) 853-3266

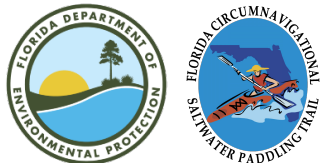
FWC 24-hour wildlife emergency/BUI hotline:

1-888-404-3922



Curry Hammock State Park
 (24.7416, -80.9801)

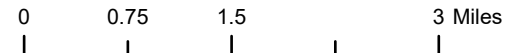
Reservations: (800) 326-3521
 Walk-ins call at least 24 hrs in advance: (305) 289-2690



Florida Circumnavigational Saltwater Paddling Trail
Segment 15: Florida Keys Overseas Paddling Trail (Map 4 of 8)

Begin: John Pennekamp State Park, Key Largo
 End: Fort Zachary Taylor Historic State Park, Key West

Distance: 111 miles
 Duration: 9-10 days

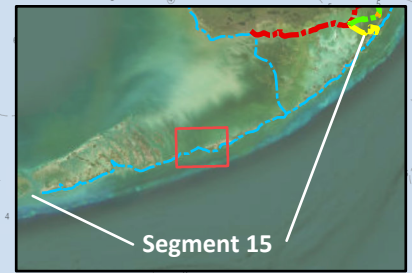


Disclaimer: This guide is intended as an aid to navigation only. A Global Positioning System (GPS) unit is required and persons are encouraged to supplement these maps with NOAA charts or other maps.
 Updated: 1/2023



Emergency Contact Info:

911
Monroe County Sheriff: (305) 853-3266
FWC 24-hour wildlife emergency/BUI hotline:
1-888-404-3922



Great White Heron National Wildlife Refuge

Pigeon Key Marine Science Center

(24.7048, -81.1560)

Land on beach on north side.
There is an entrance fee.



Little Duck Key Veteran's Park

(24.6814, -81.2302)



Florida Keys Wildlife and Environmental Area

North Marathon Shores Ramp
Rachel Key (24.7249, -81.0592)

Vaca Key
Crane Point
Marathon
Oceanfront Park Paddle Launch (24.7242, -81.0446)

33rd St Ramp (24.7137, -81.0957)

Fanny Keys

Hog Key

Boot Key

Vaca Key Bright

Sisters Creek

Sombrero Beach

Missouri Key
Little Duck Key
National Key Deer Refuge

Molasses Key

(24.6836, -81.1909)

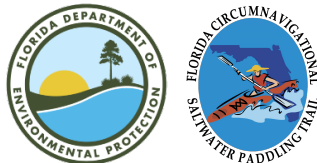
Smaller of the two islands is recommended. No fee for FPTA members registered for CT.



Sombrero Beach

(24.6912, -81.0866)

Use kayak launch site on west side of swimming beach.

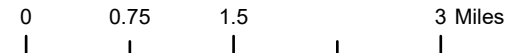


Florida Circumnavigational Saltwater Paddling Trail

Segment 15: Florida Keys Overseas Paddling Trail (Map 5 of 8)

Begin: John Pennekamp State Park, Key Largo
End: Fort Zachary Taylor Historic State Park, Key West

Distance: 111 miles
Duration: 9-10 days



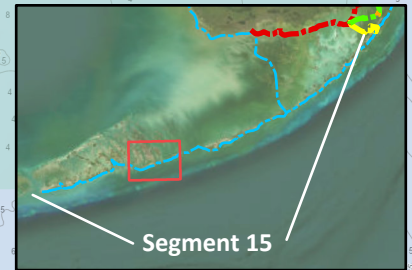
Disclaimer: This guide is intended as an aid to navigation only. A Global Positioning System (GPS) unit is required and persons are encouraged to supplement these maps with NOAA charts and other maps.
Updated: 1/2023



Emergency Contact Info:

911
Monroe County Sheriff: (305) 853-3266
FWC 24-hour wildlife emergency/BUI hotline:
1-888-404-3922

Great White Heron National Wildlife Refuge



Campsite #80

(24.6626, -81.2729)

Fee and first-come, first-serve.
Register at ranger station.
Park (305) 872-2353



Florida Keys Wildlife and Environmental Area



Big Pine Key Resort

(24.6461, -81.3285)

Sites 10-14 and 40-46 are on the water. Convenience store, pool, and laundry. Restaurants and grocery store nearby. (305) 872-2351



Camp Sawyer

(24.6477, -81.3133)

Adhere to Camp Sawyer rules. Advanced reservations required: Natalie Rembisch (305) 664-5616



Buttonwood Campsites

(24.6583, -81.2774)

Advanced reservations recommended. Sites 12-25 are electric sites on the water. Reservations (800) 326-3521

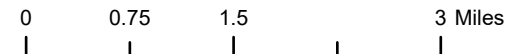


Florida Circumnavigational Saltwater Paddling Trail

Segment 15: Florida Keys Overseas Paddling Trail (Map 6 of 8)

Begin: John Pennekamp State Park, Key Largo
End: Fort Zachary Taylor Historic State Park, Key West

Distance: 111 miles
Duration: 9-10 days

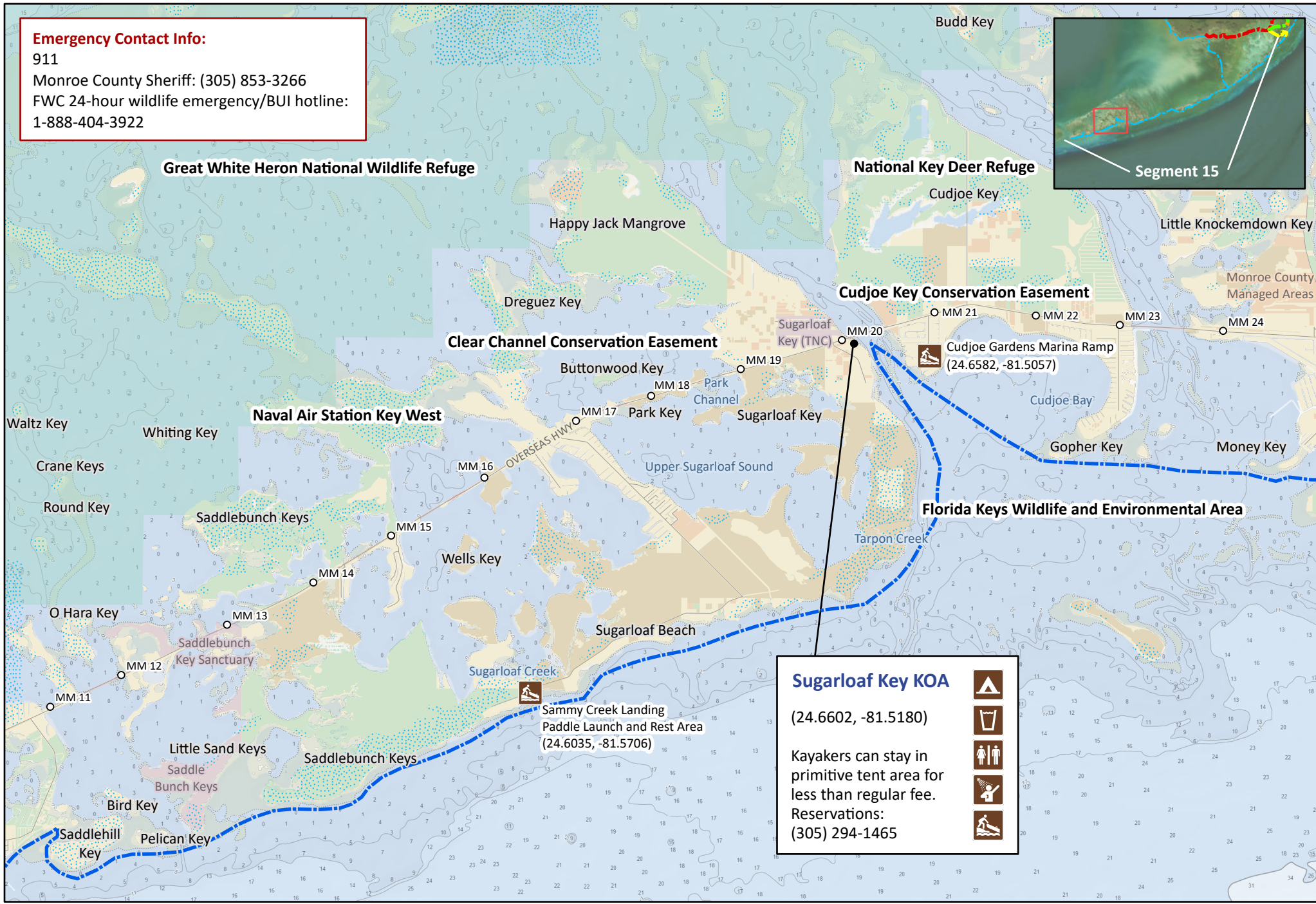
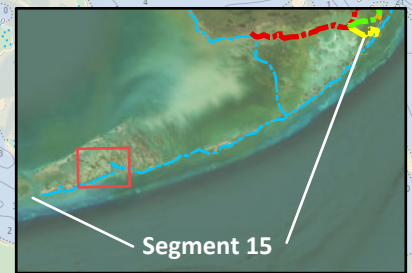


Disclaimer: This guide is intended as an aid to navigation only. A Global Positioning System (GPS) unit is required and persons are encouraged to supplement these maps with NOAA charts or other maps.
Updated: 1/2023



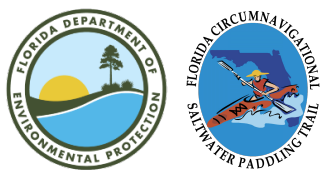
Emergency Contact Info:

911
Monroe County Sheriff: (305) 853-3266
FWC 24-hour wildlife emergency/BUI hotline:
1-888-404-3922



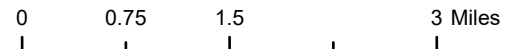
Sugarloaf Key KOA
(24.6602, -81.5180)

Kayakers can stay in primitive tent area for less than regular fee.
Reservations:
(305) 294-1465



Florida Circumnavigational Saltwater Paddling Trail
Segment 15: Florida Keys Overseas Paddling Trail (Map 7 of 8)

Begin: John Pennekamp State Park, Key Largo
End: Fort Zachary Taylor Historic State Park, Key West
Distance: 111 miles
Duration: 9-10 days



Disclaimer: This guide is intended as an aid to navigation only. A Global Positioning System (GPS) unit is required and persons are encouraged to supplement these maps with NOAA charts or other maps.
Updated: 1/2023



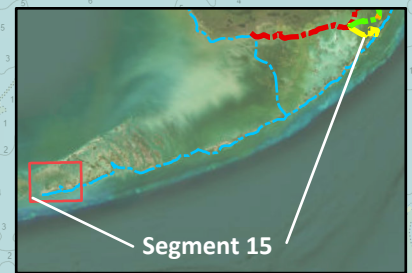
Emergency Contact Info:

911
Monroe County Sheriff: (305) 853-3266
FWC 24-hour wildlife emergency/BUI hotline:
1-888-404-3922

**Boyd's Key West
Campground**

(24.5741, -81.7330)

Several waterfront tent sites.
Heated pool, laundry, game
room and convenience store.
Museums, restaurants, and
other attractions nearby.
Reservations: (800) 562-7731



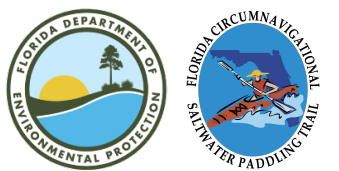
Key West National Wildlife Refuge

Great White Heron National Wildlife Refuge

Florida Keys Overseas Heritage Trail

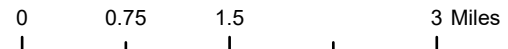
Naval Air Station Key West

Fort Zachary Taylor Historic State Park



Florida Circumnavigational Saltwater Paddling Trail
Segment 15: Florida Keys Overseas Paddling Trail (Map 8 of 8)

Begin: John Pennekamp State Park, Key Largo
End: Fort Zachary Taylor Historic State Park, Key West
Distance: 111 miles
Duration: 9-10 days



Disclaimer: This guide is intended as an aid to navigation only. A Global Positioning System (GPS) unit is required and persons are encouraged to supplement these maps with NOAA charts or other maps.
Updated: 1/2023

