

Emergency Contact Info:

911
Monroe County Sheriff: (305) 853-3266
Miami-Dade Police: (305) 4-POLICE
FWC 24-hour wildlife emergency/BUI hotline:
1-888-404-3922

Pelican Cay Harbor

(25.2363, -80.4314)

Pelican Cay RV Park
campground
reservations:
(305) 451-5223



**Garden Cove
Campsite**

(25.1730, -80.3654)

Pack out what you pack in.
Reserve in advance:
(305) 676-3777



**John Pennekamp
Coral Reef State Park**

(25.1252, -80.4054)

Aquarium, visitor center, and tours.
Information (305) 676-3777



Gilbert's Resort

(25.1829, -80.3895)



Florida Circumnavigational Saltwater Paddling Trail

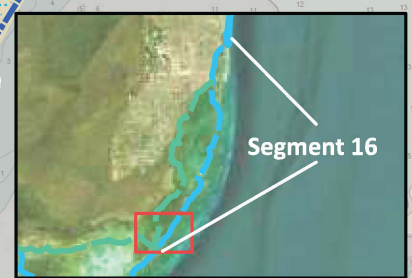
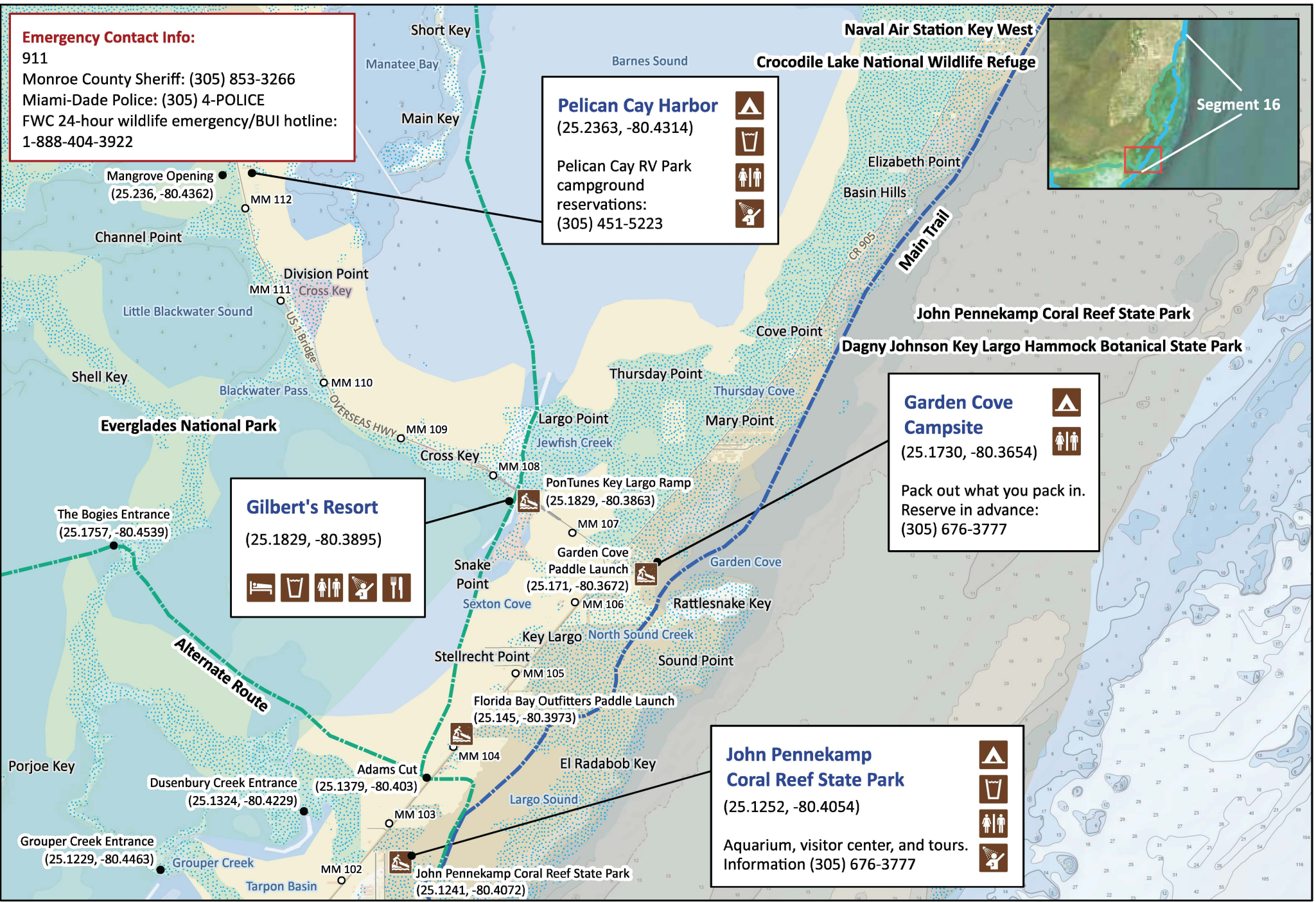
Segment 16: Biscayne Bay (Map 1 of 7)

Begin: John Pennekamp State Park, Key Largo
End: Oleta River State Park

Distance: 72.5 miles depending on route
Duration: 5-6 days



Disclaimer: This guide is intended as an aid to navigation only. A Global Positioning System (GPS) unit is required and persons are encouraged to supplement these maps with NOAA charts or other maps.
Updated: 11/22/2024



Emergency Contact Info:

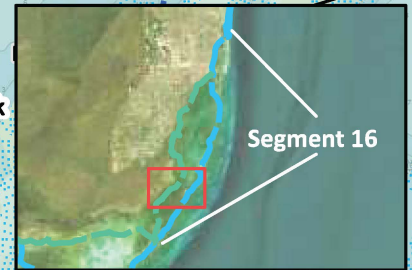
911
Monroe County Sheriff: (305) 853-3266
Miami-Dade Police: (305) 4-POLICE
FWC 24-hour wildlife emergency/BUI hotline:
1-888-404-3922

Turkey Point
Nuclear Facility

**DO NOT
APPROACH SHORELINE**

Arsenicker Key

Biscayne National Park



Segment 16

Mangrove Point
Midnight Pass
Long Arsenicker Key

East Arsenicker Key

Little Totten Key

Cutter Bank

Old Rhodes Key

Old Rhodes Point

Broad Key

Swan Key

Lindeman Key

Middle Creek

Palo Alto Key Rest Stop
(25.3405, -80.2632)

Angelfish Creek

Alabama Jacks



(25.2914, -80.3790)

Air bar floating on barges at the end of Card Sound Rd.

Gold Key

Alternate Route

Card Sound

Pumpkin Key

Little Angelfish Creek

Card Point



(25.3233, -80.3426)

Ocean Reef Club

Dispatch Creek

Main Trail

Ocean Reef Harbor

John Pennekamp Coral Reef State Park

Model Lands Basin

Mud Point

Little Card Point

Barnes Sound West Ramp

(25.29, -80.3754)

Mangrove Opening
(25.2902, -80.3795)

Barnes Point

Card Sound East Paddle Launch

(25.2849, -80.3615)

Cormorant Point

Jew Point

Crocodile Lake National Wildlife Refuge

Dagny Johnson Key Largo Hammock Botanical State Park

Middle Key

Mosquito Creek

Steamboat Creek

Naval Air Station Key West

Monroe
County
Managed Areas

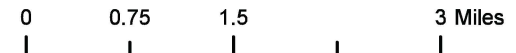


Florida Circumnavigational Saltwater Paddling Trail

Segment 16: Biscayne Bay (Map 2 of 7)

Begin: John Pennekamp State Park, Key Largo
End: Oleta River State Park

Distance: 72.5 miles depending on route
Duration: 5-6 days

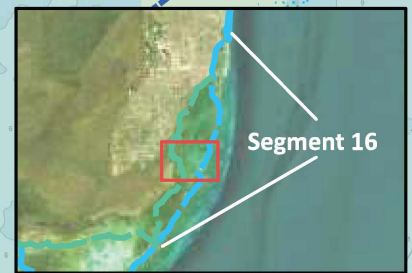


Disclaimer: This guide is intended as an aid to navigation only. A Global Positioning System (GPS) unit is required and persons are encouraged to supplement these maps with NOAA charts or other maps.
Updated: 11/22/2024



Emergency Contact Info:

911
Monroe County Sheriff: (305) 853-3266
Miami-Dade Police: (305) 4-POLICE
FWC 24-hour wildlife emergency/BUI hotline:
1-888-404-3922



Segment 16

Log Point

Homestead Air Reserve Base

Model Lands Basin

Biscayne National Park Paddle Launch
(25.4648, -80.3355)

Herbert Hoover Marina Ramp
(25.4626, -80.3383)

Homestead Bayfront Park

Biscayne Visitor Center

(25.4634, -80.3340)



Homestead Bayfront Park

(25.4633, -80.3340)

One night only and maximum of four tents with eight kayaks. Arrange in advance: (305) 230-3033



Elliott Key Campground

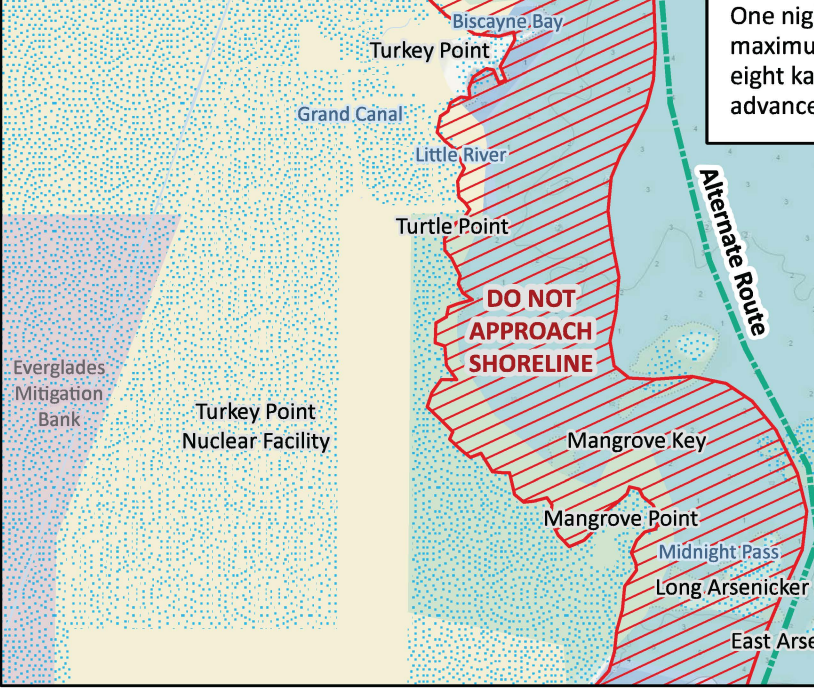
(25.4534, -80.1963)

First-come, first-serve. Small fee. Tie up on low docks not on the swimming beach.



Adams Key Picnic Area

(25.3970, -80.2337)



DO NOT APPROACH SHORELINE

Alternate Route

Main Trail

Biscayne National Park

Adams Key

Jones Homesite on Porgy Key
(25.3918, -80.2355)

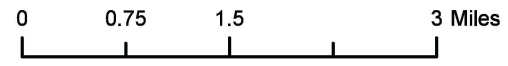


Florida Circumnavigational Saltwater Paddling Trail

Segment 16: Biscayne Bay (Map 3 of 7)

Begin: John Pennekamp State Park, Key Largo
End: Oleta River State Park

Distance: 72.5 miles depending on route
Duration: 5-6 days

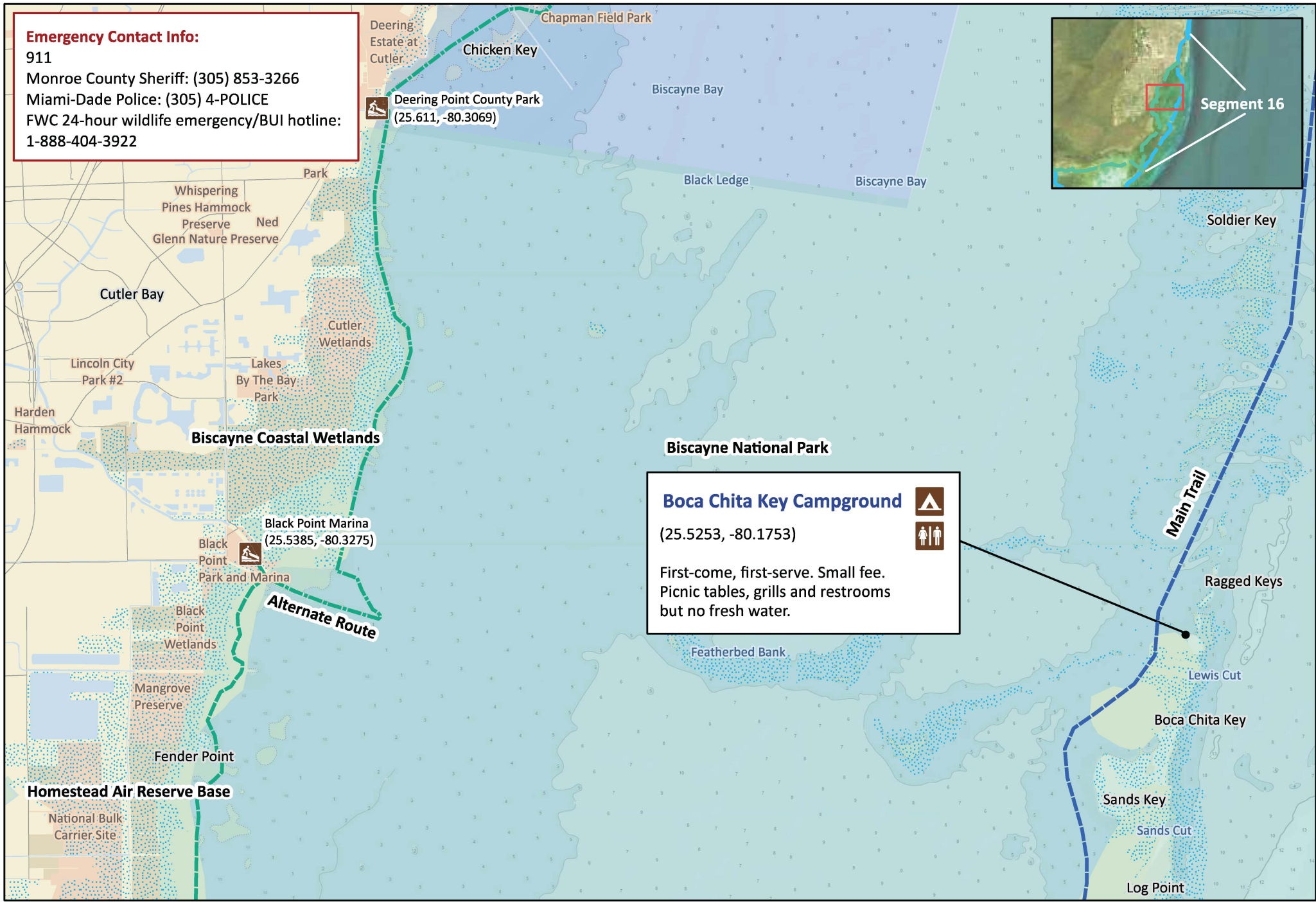
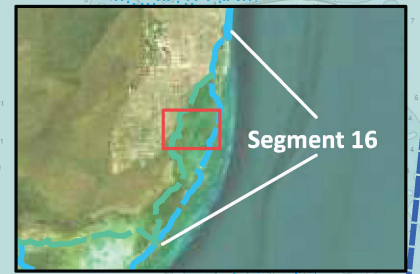




Disclaimer: This guide is intended as an aid to navigation only. A Global Positioning System (GPS) unit is required and persons are encouraged to supplement these maps with NOAA charts or other maps.
Updated: 11/22/2024



Emergency Contact Info:

911
Monroe County Sheriff: (305) 853-3266
Miami-Dade Police: (305) 4-POLICE
FWC 24-hour wildlife emergency/BUI hotline:
1-888-404-3922



Boca Chita Key Campground 
(25.5253, -80.1753) 
First-come, first-serve. Small fee.
Picnic tables, grills and restrooms
but no fresh water.

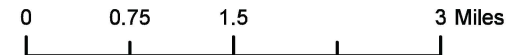


Florida Circumnavigational Saltwater Paddling Trail

Segment 16: Biscayne Bay (Map 4 of 7)

Begin: John Pennekamp State Park, Key Largo
End: Oleta River State Park

Distance: 72.5 miles depending on route
Duration: 5-6 days

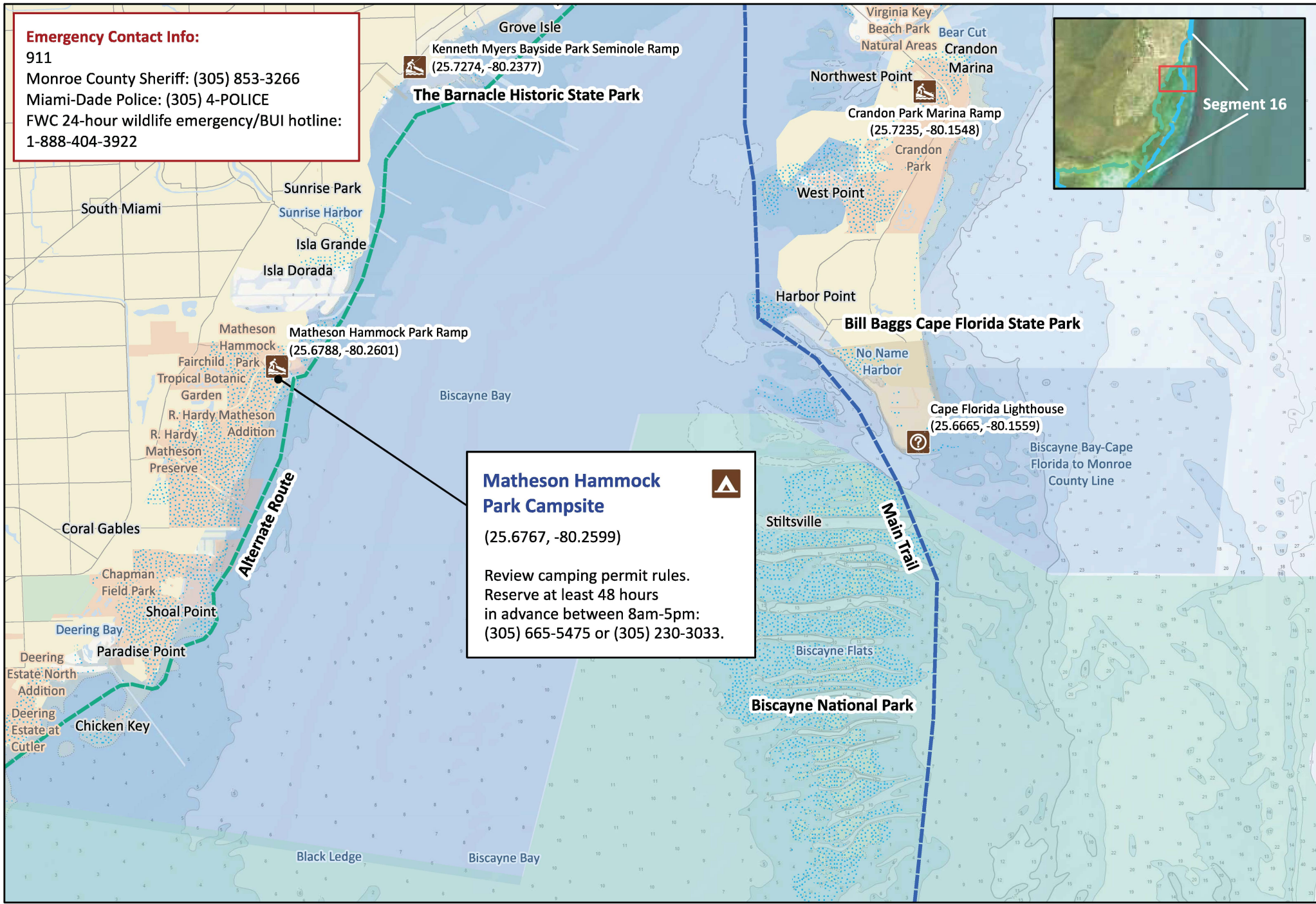
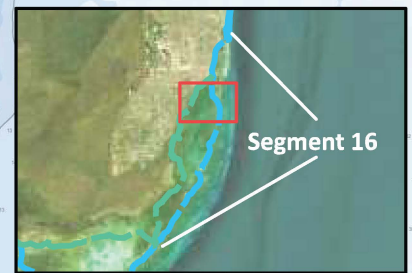


Disclaimer: This guide is intended as an aid to navigation only. A Global Positioning System (GPS) unit is required and persons are encouraged to supplement these maps with NOAA charts or other maps.
Updated: 11/22/2024



Emergency Contact Info:

911
Monroe County Sheriff: (305) 853-3266
Miami-Dade Police: (305) 4-POLICE
FWC 24-hour wildlife emergency/BUI hotline:
1-888-404-3922



The Barnacle Historic State Park
Kenneth Myers Bayside Park Seminole Ramp
(25.7274, -80.2377)

Virginia Key
Beach Park
Natural Areas
Northwest Point
Crandon Park Marina Ramp
(25.7235, -80.1548)
Crandon Park
Bear Cut
Crandon Marina

South Miami
Sunrise Park
Sunrise Harbor
Isla Grande
Isla Dorada
Matheson Hammock Park Ramp
(25.6788, -80.2601)
Fairchild Park
Tropical Botanic Garden
R. Hardy Matheson Addition
R. Hardy Matheson Preserve
Coral Gables
Chapman Field Park
Shoal Point
Deering Bay
Paradise Point
Deering Estate North Addition
Deering Estate at Cutler
Chicken Key

Matheson Hammock Park Campsite
(25.6767, -80.2599)
Review camping permit rules.
Reserve at least 48 hours
in advance between 8am-5pm:
(305) 665-5475 or (305) 230-3033.

Harbor Point
Bill Baggs Cape Florida State Park
No Name Harbor
Cape Florida Lighthouse
(25.6665, -80.1559)

Biscayne Bay
Stiltsville
Biscayne Flats
Biscayne National Park
Biscayne Bay-Cape Florida to Monroe County Line

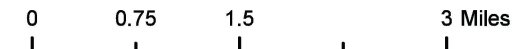


Florida Circumnavigational Saltwater Paddling Trail

Segment 16: Biscayne Bay (Map 5 of 7)

Begin: John Pennekamp State Park, Key Largo
End: Oleta River State Park

Distance: 72.5 miles depending on route
Duration: 5-6 days

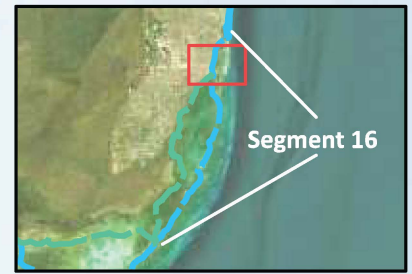




Disclaimer: This guide is intended as an aid to navigation only. A Global Positioning System (GPS) unit is required and persons are encouraged to supplement these maps with NOAA charts or other maps.
Updated: 11/22/2024



Emergency Contact Info:

911
Monroe County Sheriff: (305) 853-3266
Miami-Dade Police: (305) 4-POLICE
FWC 24-hour wildlife emergency/BUI hotline:
1-888-404-3922



Virginia Key Beach Park 
(25.7432, -80.1442) 
Picnic pavilions available.

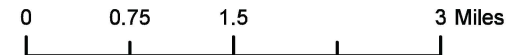


Florida Circumnavigational Saltwater Paddling Trail

Segment 16: Biscayne Bay (Map 6 of 7)

Begin: John Pennekamp State Park, Key Largo
End: Oleta River State Park

Distance: 72.5 miles depending on route
Duration: 5-6 days



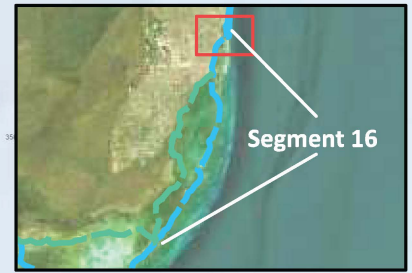
Disclaimer: This guide is intended as an aid to navigation only. A Global Positioning System (GPS) unit is required and persons are encouraged to supplement these maps with NOAA charts or other maps.
Updated: 11/22/2024



Emergency Contact Info:

911
Monroe County Sheriff: (305) 853-3266
Miami-Dade Police: (305) 4-POLICE
FWC 24-hour wildlife emergency/BUI hotline:
1-888-404-3922

Dolphin Center STD:
Archaeological Zone



Segment 16

Oleta River State Park PC Landing

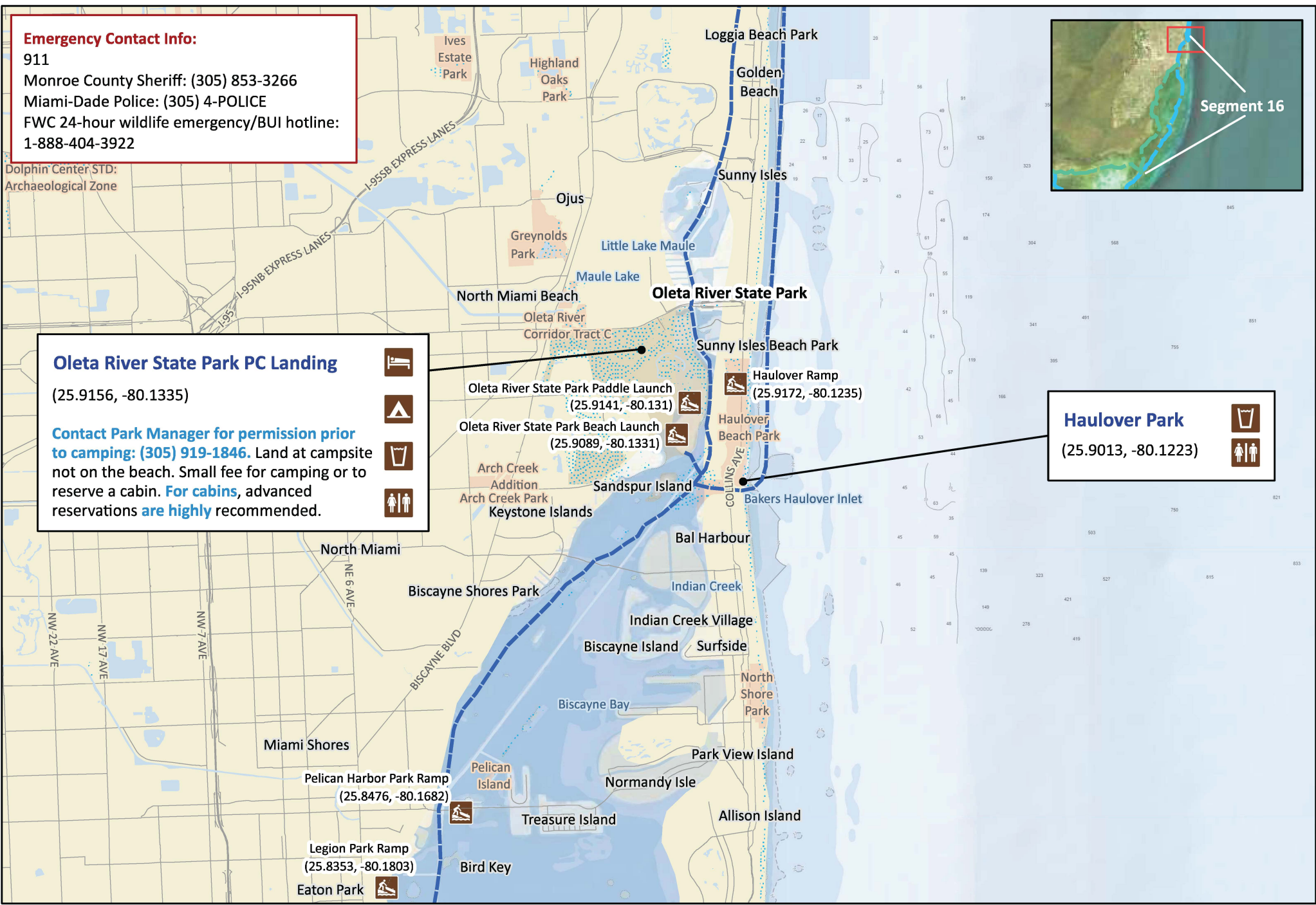
(25.9156, -80.1335)

Contact Park Manager for permission prior to camping: (305) 919-1846. Land at campsite not on the beach. Small fee for camping or to reserve a cabin. For cabins, advanced reservations are highly recommended.



Haulover Park

(25.9013, -80.1223)

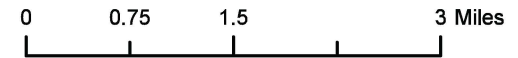


Florida Circumnavigational Saltwater Paddling Trail

Segment 16: Biscayne Bay (Map 7 of 7)

Begin: John Pennekamp State Park, Key Largo
End: Oleta River State Park

Distance: 72.5 miles depending on route
Duration: 5-6 days



Disclaimer: This guide is intended as an aid to navigation only. A Global Positioning System (GPS) unit is required and persons are encouraged to supplement these maps with NOAA charts or other maps.
Updated: 11/22/2024

N

