

### Emergency Contact Info:

911

Okaloosa County Sheriff: (850) 651-7400

Walton County Sheriff: (850) 267-2000

FWC 24-hour wildlife emergency/BUI hotline:

1-888-404-3922

Eglin Air Force Base

### Visitor Center

(30.4008, -86.8663)



### Navarre Beach Camping Resort

(30.4042, -86.8377)

Small seawall to hoist boat over.

Tent or rent cabin.

Laundromat, pool, computer/game room.

Reservations (850) 203-9850



Air Force Special Operations Command, Hurlburt Field

Navarre Beach Bridge



Kayak Launch

(30.3835, -86.8634)

Navarre Beach Park

Santa Rosa Island

### Best Western Navarre

(30.4007, -86.8592)

Land in sand before large rocks.

Restaurants and groceries nearby.

Reservations (850) 939-9400



Wynnehaven Beach

Upper Pritchard Long Point

US-98

Manatee Point

Gulf Islands National Seashore

Santa Rosa Sound

0 0.75 1.5 3 Miles

Disclaimer: This guide is intended as an aid to navigation only. A Global Positioning System (GPS) unit is required and persons are encouraged to supplement these maps with NOAA charts or other maps.

Updated: 11/2022

## Florida Circumnavigational Saltwater Paddling Trail

### Segment 2: Santa Rosa Sound/Emerald Coast (Map 1 of 4)

Begin: Navarre Beach Camping Resort

Distance: 46 miles

End: Grayton Beach State Park

Duration: 3-4 days



N



### Emergency Contact Info:

911

Okaloosa County Sheriff: (850) 651-7400

Walton County Sheriff: (850) 267-2000

FWC 24-hour wildlife emergency/BUI hotline:

1-888-404-3922

Air Force Special Operations Command, Hurlburt Field

### Spoil Islands

(30.4054, -86.6625)

Primitive camping available on several spoil islands in the area.



Kayak Launch  
(30.4067, -86.6506)



Kayak Launch  
(30.4057, -86.6382)



Kayak Launch  
(30.3995, -86.6004)



Kayak Launch  
(30.3914, -86.5222)



### Quality Inn

(30.4048, -86.6333)

Land on narrow beach.  
Restaurants and groceries nearby.  
Reservations (850) 275-0300



### Ross Marler Park

(30.4003, -86.5926)

Several pavilions.  
Restaurants nearby.



### Clement R. Taylor Park

(30.4002, -86.5131)

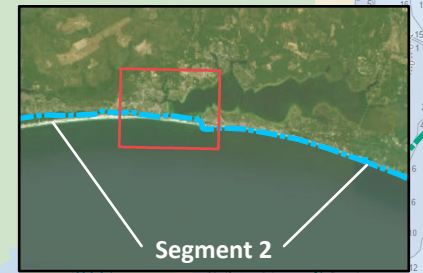
Covered picnic area.



### Gulf Islands National Seashore Okaloosa Unit

(30.3978, -86.5826)

Picnic tables and grills.



Segment 2

## Florida Circumnavigational Saltwater Paddling Trail

### Segment 2: Santa Rosa Sound/Emerald Coast (Map 2 of 4)

Begin: Navarre Beach Camping Resort

Distance: 46 miles

End: Grayton Beach State Park

Duration: 3-4 days

0 0.75 1.5 3 Miles

Disclaimer: This guide is intended as an aid to navigation only. A Global Positioning System (GPS) unit is required and persons are encouraged to supplement these maps with NOAA charts or other maps.

Updated: 11/2022

N



### Emergency Contact Info:

911

Okaloosa County Sheriff: (850) 651-7400

Walton County Sheriff: (850) 267-2000

FWC 24-hour wildlife emergency/BUI hotline:

1-888-404-3922

Eglin Air Force Base

Alternate Route

Segment 2

Piney Point

Indian Bayou

Henderson Beach State Park

James Lee Park - EMERALD COAST PKWY  
(30.3806, -86.4099)

Seascape

Miramar Beach

Kayak Launch  
(30.387, -86.3588)

Horseshoe Bayou

Hewett Bayou

Kayak Launch  
(30.3983, -86.2832)

Point Washington State Forest

Topsail Hill Preserve State Park

US HWY 98

Topsail Hill Preserve Park Access Point  
(30.3635, -86.3003)

### Henderson Beach State Park

(30.3827, -86.4369)

Land at picnic area to register for campsite.  
Restaurants, sports store and groceries nearby.  
Registration (850) 837-7550



### Camp Gulf RV Park

(30.3714, -86.3421)

Tent camping allowed near office.  
No reservations.  
Information (877) 226-7485



### Topsail Hill Preserve State Park

(30.3593, -86.2798)

Pull up near dunes.  
Shuttle to ranger station.  
Reservations (800) 326-3521



## Florida Circumnavigational Saltwater Paddling Trail

### Segment 2: Santa Rosa Sound/Emerald Coast (Map 3 of 4)

Begin: Navarre Beach Camping Resort

End: Grayton Beach State Park

Distance: 46 miles

Duration: 3-4 days

0 0.75 1.5 3 Miles

Disclaimer: This guide is intended as an aid to navigation only. A Global Positioning System (GPS) unit is required and persons are encouraged to supplement these maps with NOAA charts or other maps.

Updated: 11/2022



### Emergency Contact Info:

911

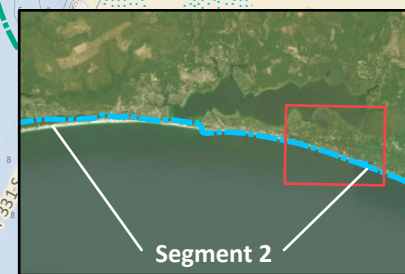
Okaloosa County Sheriff: (850) 651-7400

Walton County Sheriff: (850) 267-2000

FWC 24-hour wildlife emergency/BUI hotline:

1-888-404-3922

### Choctawhatchee River Water Management Area



Segment 2

Kayak Launch

(30.3983, -86.2832)



Hogtown Bayou

Mussett Bayou

Churchill Bayou

Kayak Launch

(30.3959, -86.1705)



Coffeen  
Nature  
Preserve

**Topsail Hill Preserve State Park**

Topsail Hill Preserve Park Access Point

(30.3635, -86.3003)

Stallworth  
Lake Preserve

US HWY 98

**Eden Gardens State Park**

### Topsail Hill Preserve State Park

(30.3593, -86.2798)

Pull up near dunes.

Shuttle to ranger station.

Reservations (800) 326-3521



Ed Walline Park

(30.3462, -86.2302)

Gulfview Heights Beach Access

(30.3437, -86.221)

Blue Mountain Beach Access

(30.3379, -86.2009)

**Point Washington State Forest**

W CO HWY 30A

**Grayton Beach State Park**

Grayton  
Dunes Park

Inlet Access

(30.3264, -86.1637)

### Grayton Beach Campground

(30.3282, -86.1542)

Even-numbered campsites from 10-20 are on Western Lake.

Cabins available and overflow campground.

Park Headquarters (850) 267-8300



## Florida Circumnavigational Saltwater Paddling Trail

### Segment 2: Santa Rosa Sound/Emerald Coast (Map 4 of 4)

Begin: Navarre Beach Camping Resort

Distance: 46 miles

End: Grayton Beach State Park

Duration: 3-4 days

0 0.75 1.5 3 Miles

Disclaimer: This guide is intended as an aid to navigation only. A Global Positioning System (GPS) unit is required and persons are encouraged to supplement these maps with NOAA charts or other maps.

Updated: 11/2022

