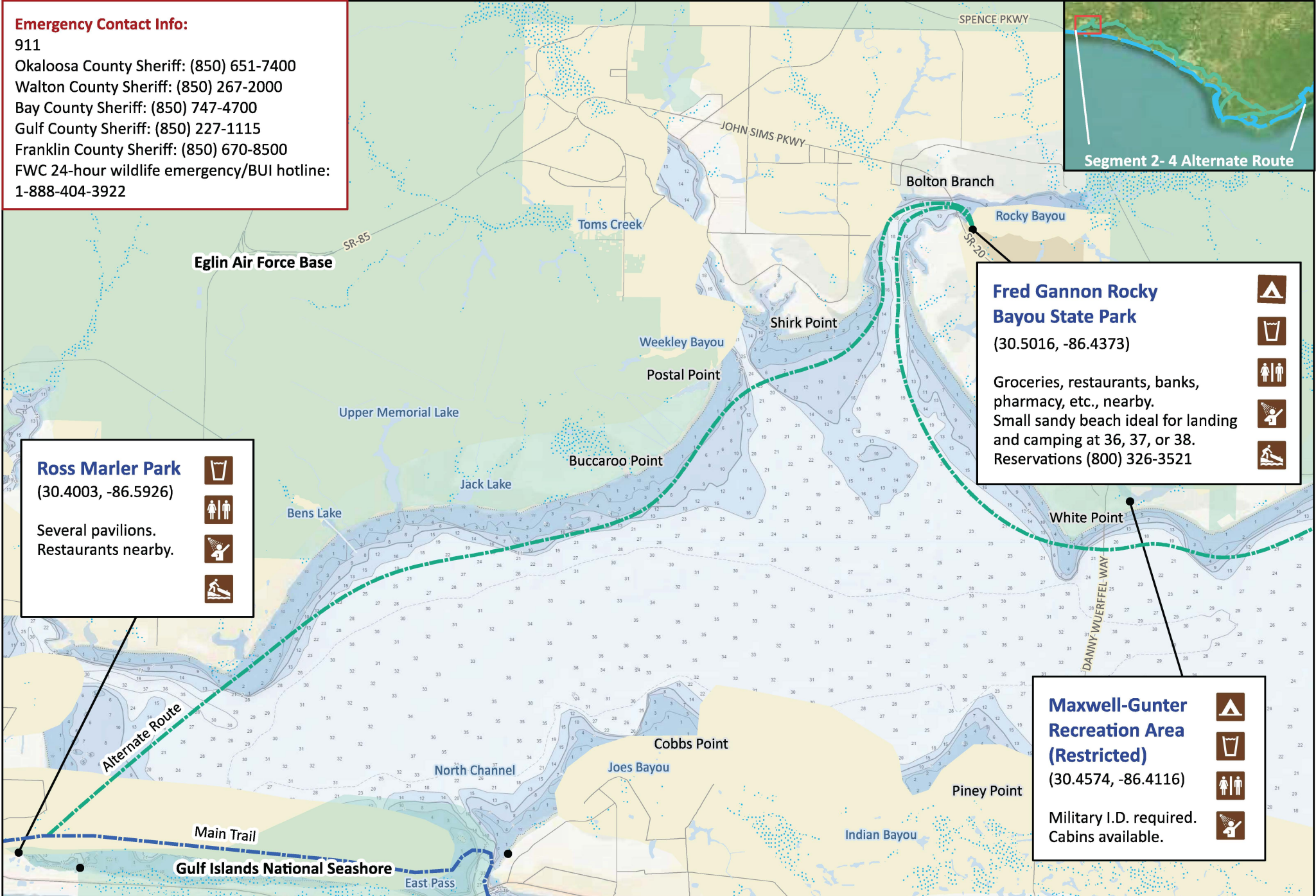


Emergency Contact Info:

911
Okaloosa County Sheriff: (850) 651-7400
Walton County Sheriff: (850) 267-2000
Bay County Sheriff: (850) 747-4700
Gulf County Sheriff: (850) 227-1115
Franklin County Sheriff: (850) 670-8500
FWC 24-hour wildlife emergency/BUI hotline:
1-888-404-3922



Segment 2-4 Alternate Route



Ross Marler Park
(30.4003, -86.5926)

-
-
-
-

Several pavilions.
Restaurants nearby.

Fred Gannon Rocky Bayou State Park
(30.5016, -86.4373)

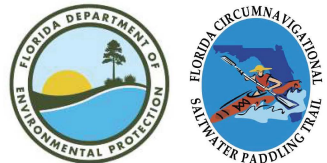
-
-
-
-
-

Groceries, restaurants, banks, pharmacy, etc., nearby.
Small sandy beach ideal for landing and camping at 36, 37, or 38.
Reservations (800) 326-3521

Maxwell-Gunter Recreation Area (Restricted)
(30.4574, -86.4116)

-
-
-
-

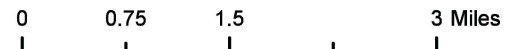
Military I.D. required.
Cabins available.



Florida Circumnavigational Saltwater Paddling Trail

Segments 2-4: Alternate Panhandle Route (Map 1 of 12)

Begin: Destin
End: Apalachicola
Distance: 169 miles
Duration: 9 days



Disclaimer: This guide is intended as an aid to navigation only. A Global Positioning System (GPS) unit is required and persons are encouraged to supplement these maps with NOAA charts or other maps.
Updated: 11/22/2024



Emergency Contact Info:

911
Okaloosa County Sheriff: (850) 651-7400
Walton County Sheriff: (850) 267-2000
Bay County Sheriff: (850) 747-4700
Gulf County Sheriff: (850) 227-1115
Franklin County Sheriff: (850) 670-8500
FWC 24-hour wildlife emergency/BUI hotline:
1-888-404-3922

Basin Bayou Primitive Campsite

(30.4969, -86.2402)



Primitive campsite with tables and fire ring.
Need Eglin Outdoor Recreation Pass, fee,
and isportsman account.
Information (850) 882-4165 or (850) 882-4166



Segment 2- 4 Alternate Route

Eglin Air Force Base

STATE HWY. 20 W

COUNTY 83A

Sharon Lake
Choctaw Beach
Big Hammock Point
Grassy Cove
Hammock Point
Trout Creek
Basin Bayou
Alaqua Point
Freeport

**Choctaw Beach
County Park**
(30.4767, -86.3308)



**Nick's Seafood
Restaurant**
(30.4866, -86.2509)



Choctawhatchee River Water Management Area

Fourmile Point

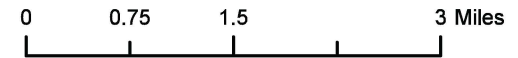


Florida Circumnavigational Saltwater Paddling Trail

Segments 2-4: Alternate Panhandle Route (Map 2 of 12)

Begin: Destin
End: Apalachicola

Distance: 169 miles
Duration: 9 days



Disclaimer: This guide is intended as an aid to navigation only. A Global Positioning System (GPS) unit is required and persons are encouraged to supplement these maps with NOAA charts or other maps.
Updated: 11/22/2024



Emergency Contact Info:

911
Okaloosa County Sheriff: (850) 651-7400
Walton County Sheriff: (850) 267-2000
Bay County Sheriff: (850) 747-4700
Gulf County Sheriff: (850) 227-1115
Franklin County Sheriff: (850) 670-8500
FWC 24-hour wildlife emergency/BUI hotline:
1-888-404-3922

Grady Brown Park

(30.4321, -86.1543)

Picnic pavilions available.



Live Oak Landing RV Resort

(30.4300, -86.1135)

RV sites and cabin rentals. Accessible from water 2.5 miles east of SR 83 Bridge. (877) 436-5063



Eden Gardens State Park

(30.3737, -86.1171)



Choctawhatchee River Water Management Area

Choctawhatchee Rowing and Paddling Club

(30.3728, -86.1150)

Camp in front of building with permission. Don't block building or water access. Potable water across street. Permission (850) 259-8600



Pilcher Park

(30.3977, -86.1695)

Picnic pavilions available.



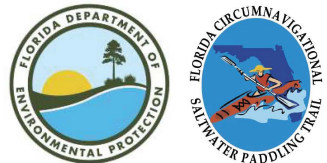
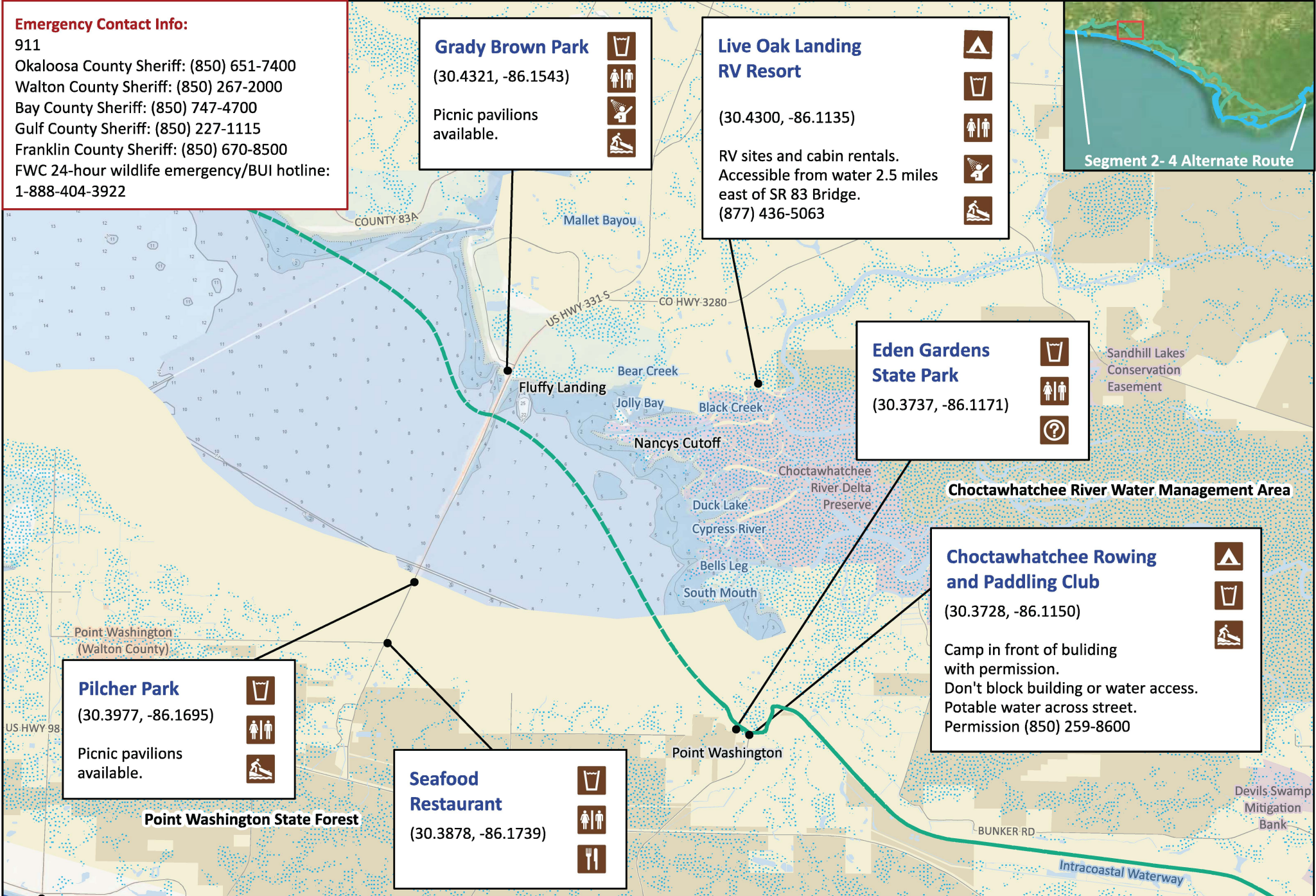
Seafood Restaurant

(30.3878, -86.1739)



Point Washington State Forest

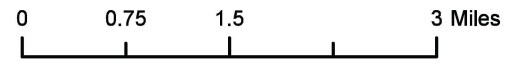
Segment 2-4 Alternate Route



Florida Circumnavigational Saltwater Paddling Trail

Segments 2-4: Alternate Panhandle Route (Map 3 of 12)

Begin: Destin
End: Apalachicola
Distance: 169 miles
Duration: 9 days



Disclaimer: This guide is intended as an aid to navigation only. A Global Positioning System (GPS) unit is required and persons are encouraged to supplement these maps with NOAA charts or other maps.
Updated: 11/22/2024




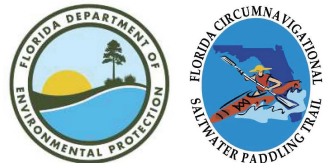
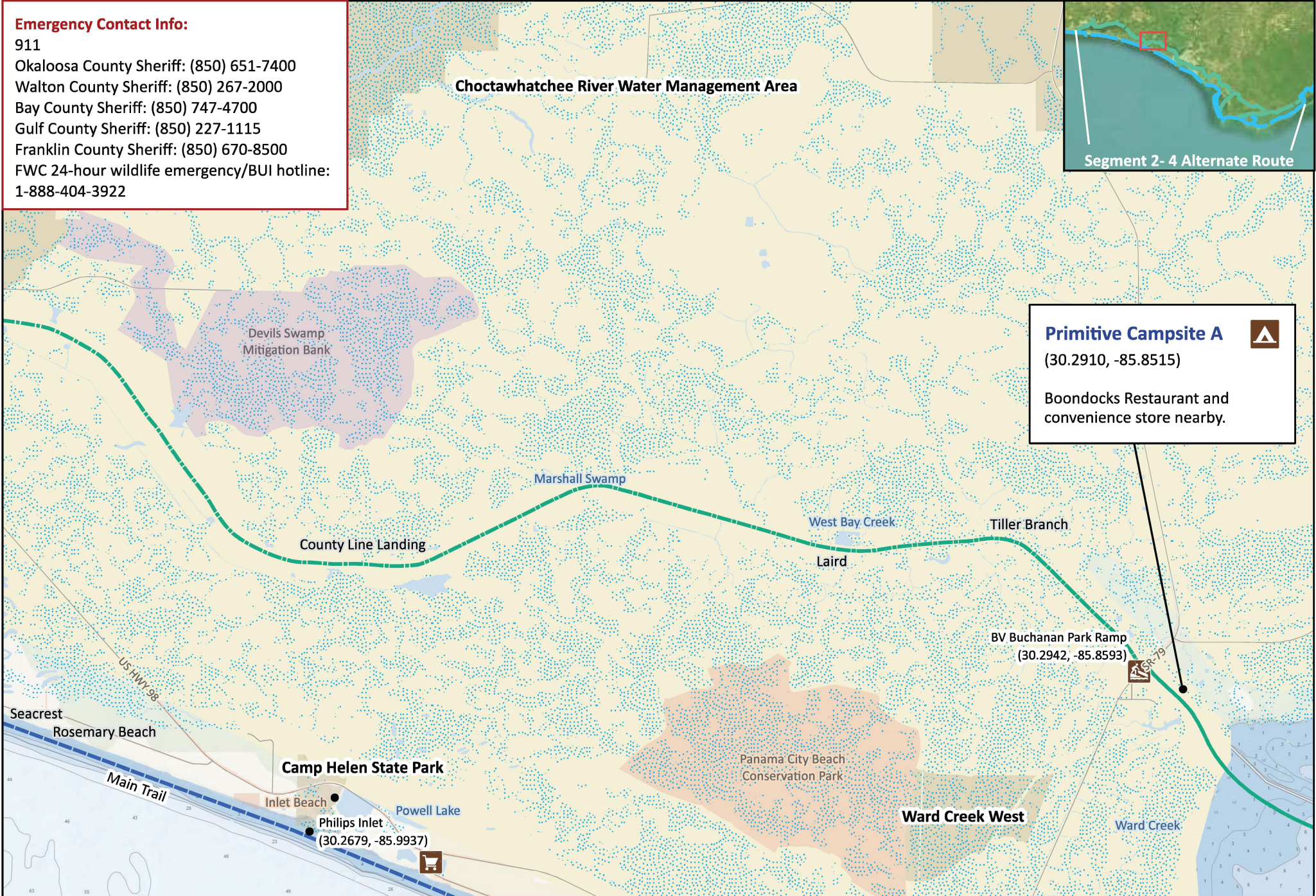
Emergency Contact Info:

911
Okaloosa County Sheriff: (850) 651-7400
Walton County Sheriff: (850) 267-2000
Bay County Sheriff: (850) 747-4700
Gulf County Sheriff: (850) 227-1115
Franklin County Sheriff: (850) 670-8500
FWC 24-hour wildlife emergency/BUI hotline:
1-888-404-3922

Choctawhatchee River Water Management Area

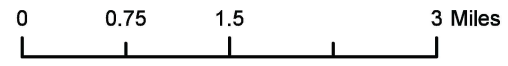


Primitive Campsite A 
(30.2910, -85.8515)
Boondocks Restaurant and
convenience store nearby.



Florida Circumnavigational Saltwater Paddling Trail
Segments 2-4: Alternate Panhandle Route (Map 4 of 12)

Begin: Destin
End: Apalachicola
Distance: 169 miles
Duration: 9 days

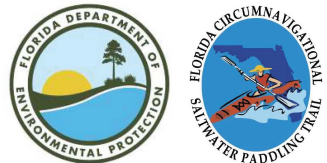
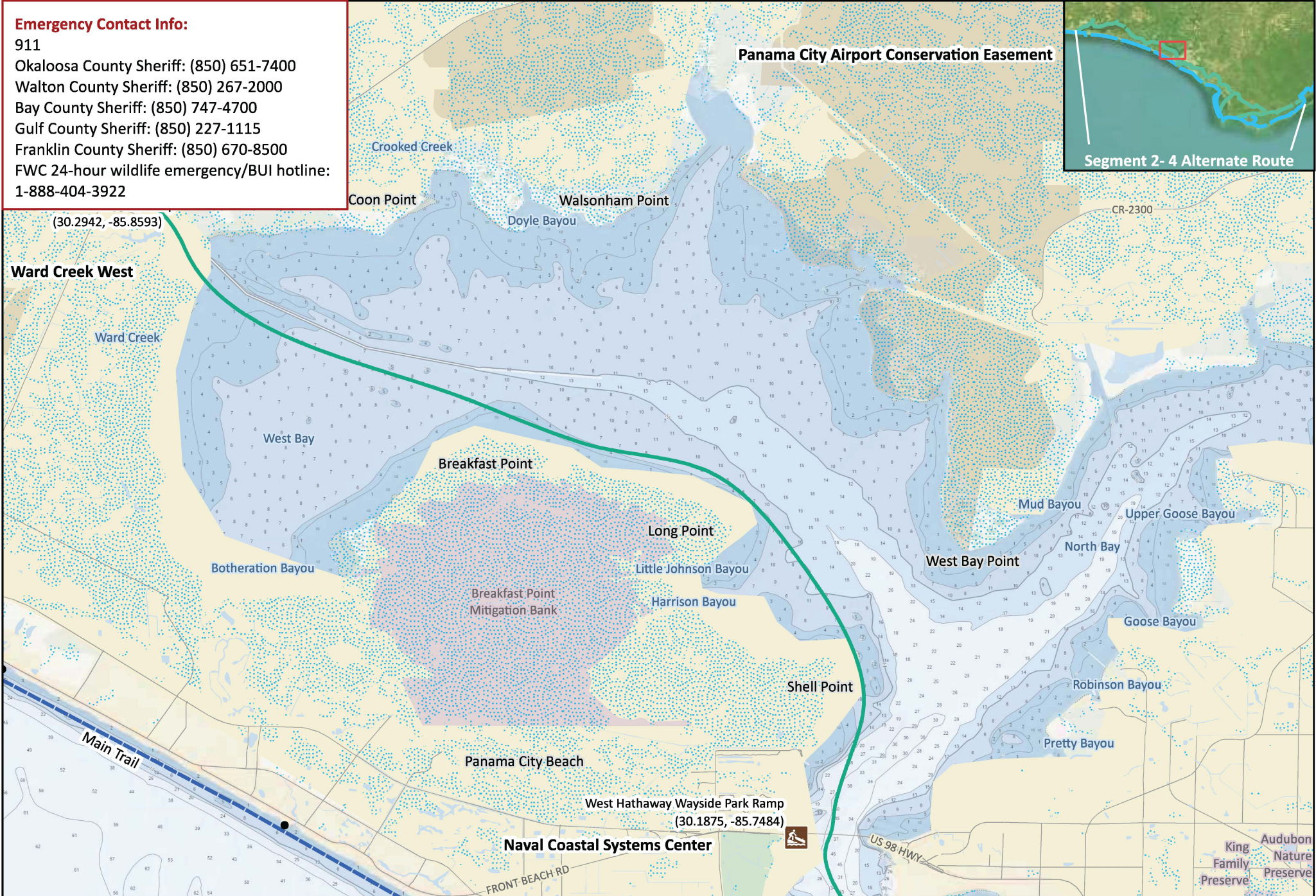


Disclaimer: This guide is intended as an aid to navigation only. A Global Positioning System (GPS) unit is required and persons are encouraged to supplement these maps with NOAA charts or other maps.
Updated: 11/22/2024



Emergency Contact Info:

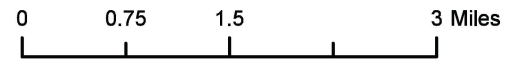
911
Okaloosa County Sheriff: (850) 651-7400
Walton County Sheriff: (850) 267-2000
Bay County Sheriff: (850) 747-4700
Gulf County Sheriff: (850) 227-1115
Franklin County Sheriff: (850) 670-8500
FWC 24-hour wildlife emergency/BUI hotline:
1-888-404-3922



Florida Circumnavigational Saltwater Paddling Trail

Segments 2-4: Alternate Panhandle Route (Map 5 of 12)

Begin: Destin
End: Apalachicola
Distance: 169 miles
Duration: 9 days



Disclaimer: This guide is intended as an aid to navigation only. A Global Positioning System (GPS) unit is required and persons are encouraged to supplement these maps with NOAA charts or other maps.
Updated: 11/22/2024

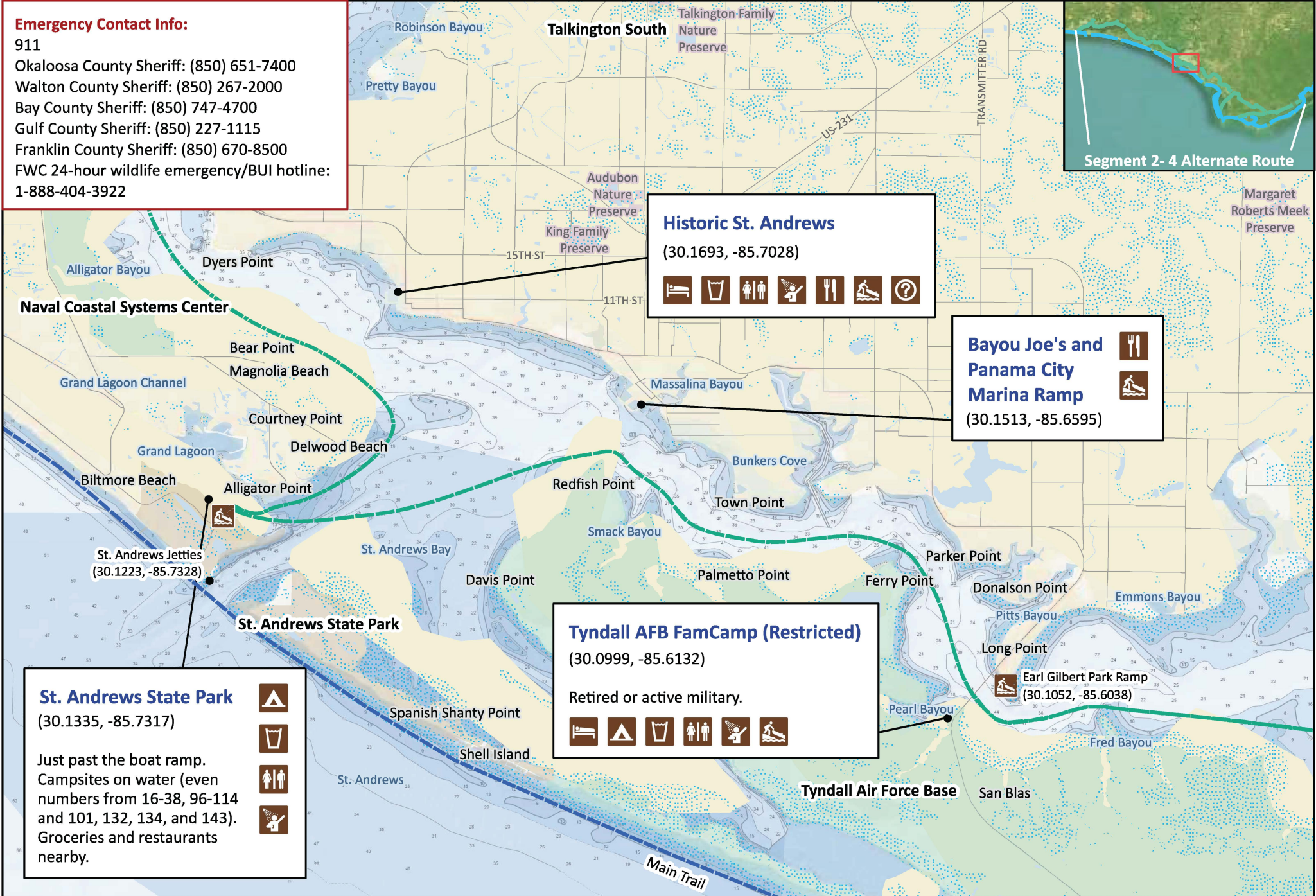


Emergency Contact Info:

911
Okaloosa County Sheriff: (850) 651-7400
Walton County Sheriff: (850) 267-2000
Bay County Sheriff: (850) 747-4700
Gulf County Sheriff: (850) 227-1115
Franklin County Sheriff: (850) 670-8500
FWC 24-hour wildlife emergency/BUI hotline:
1-888-404-3922



Segment 2-4 Alternate Route



Historic St. Andrews

(30.1693, -85.7028)



Bayou Joe's and Panama City Marina Ramp

(30.1513, -85.6595)



Tyndall AFB FamCamp (Restricted)

(30.0999, -85.6132)

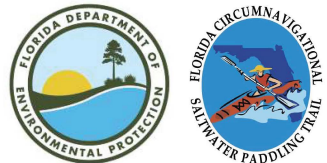
Retired or active military.



St. Andrews State Park

(30.1335, -85.7317)

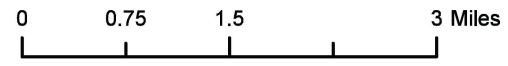
Just past the boat ramp.
Campsites on water (even numbers from 16-38, 96-114 and 101, 132, 134, and 143).
Groceries and restaurants nearby.



Florida Circumnavigational Saltwater Paddling Trail

Segments 2-4: Alternate Panhandle Route (Map 6 of 12)

Begin: Destin
End: Apalachicola
Distance: 169 miles
Duration: 9 days



Disclaimer: This guide is intended as an aid to navigation only. A Global Positioning System (GPS) unit is required and persons are encouraged to supplement these maps with NOAA charts or other maps.
Updated: 11/22/2024



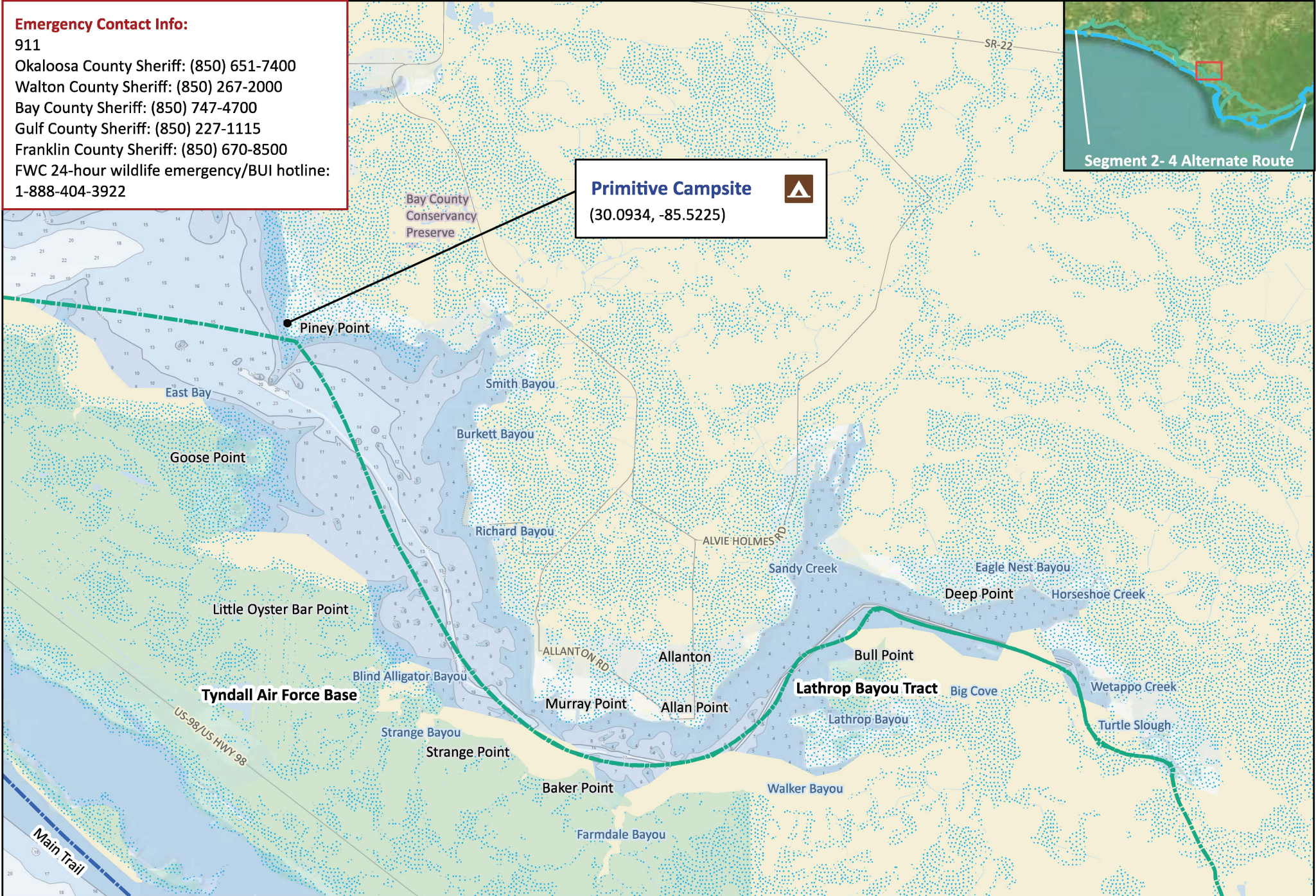
Emergency Contact Info:

911
Okaloosa County Sheriff: (850) 651-7400
Walton County Sheriff: (850) 267-2000
Bay County Sheriff: (850) 747-4700
Gulf County Sheriff: (850) 227-1115
Franklin County Sheriff: (850) 670-8500
FWC 24-hour wildlife emergency/BUI hotline:
1-888-404-3922



Segment 2-4 Alternate Route

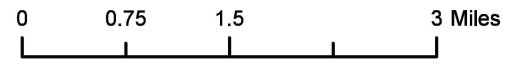
Primitive Campsite
(30.0934, -85.5225)



Florida Circumnavigational Saltwater Paddling Trail
Segments 2-4: Alternate Panhandle Route (Map 7 of 12)

Begin: Destin
End: Apalachicola

Distance: 169 miles
Duration: 9 days



Disclaimer: This guide is intended as an aid to navigation only. A Global Positioning System (GPS) unit is required and persons are encouraged to supplement these maps with NOAA charts or other maps.
Updated: 11/22/2024



Emergency Contact Info:

911
Okaloosa County Sheriff: (850) 651-7400
Walton County Sheriff: (850) 267-2000
Bay County Sheriff: (850) 747-4700
Gulf County Sheriff: (850) 227-1115
Franklin County Sheriff: (850) 670-8500
FWC 24-hour wildlife emergency/BUI hotline:
1-888-404-3922

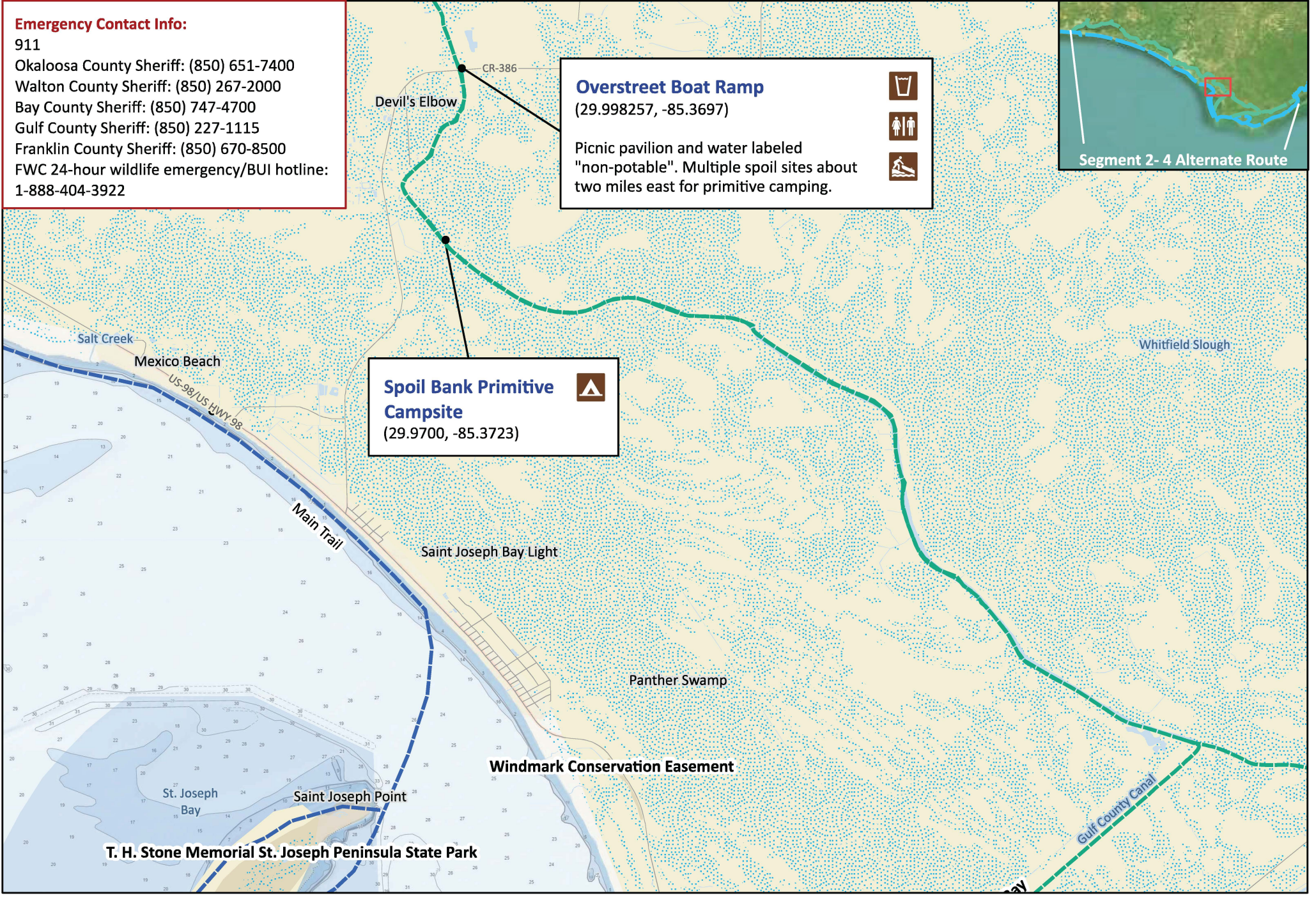


Segment 2-4 Alternate Route

Overstreet Boat Ramp
(29.998257, -85.3697)

Picnic pavilion and water labeled "non-potable". Multiple spoil sites about two miles east for primitive camping.

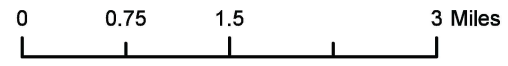
Spoil Bank Primitive Campsite
(29.9700, -85.3723)



Florida Circumnavigational Saltwater Paddling Trail

Segments 2-4: Alternate Panhandle Route (Map 8 of 12)

Begin: Destin
End: Apalachicola
Distance: 169 miles
Duration: 9 days



Disclaimer: This guide is intended as an aid to navigation only. A Global Positioning System (GPS) unit is required and persons are encouraged to supplement these maps with NOAA charts or other maps.
Updated: 11/22/2024

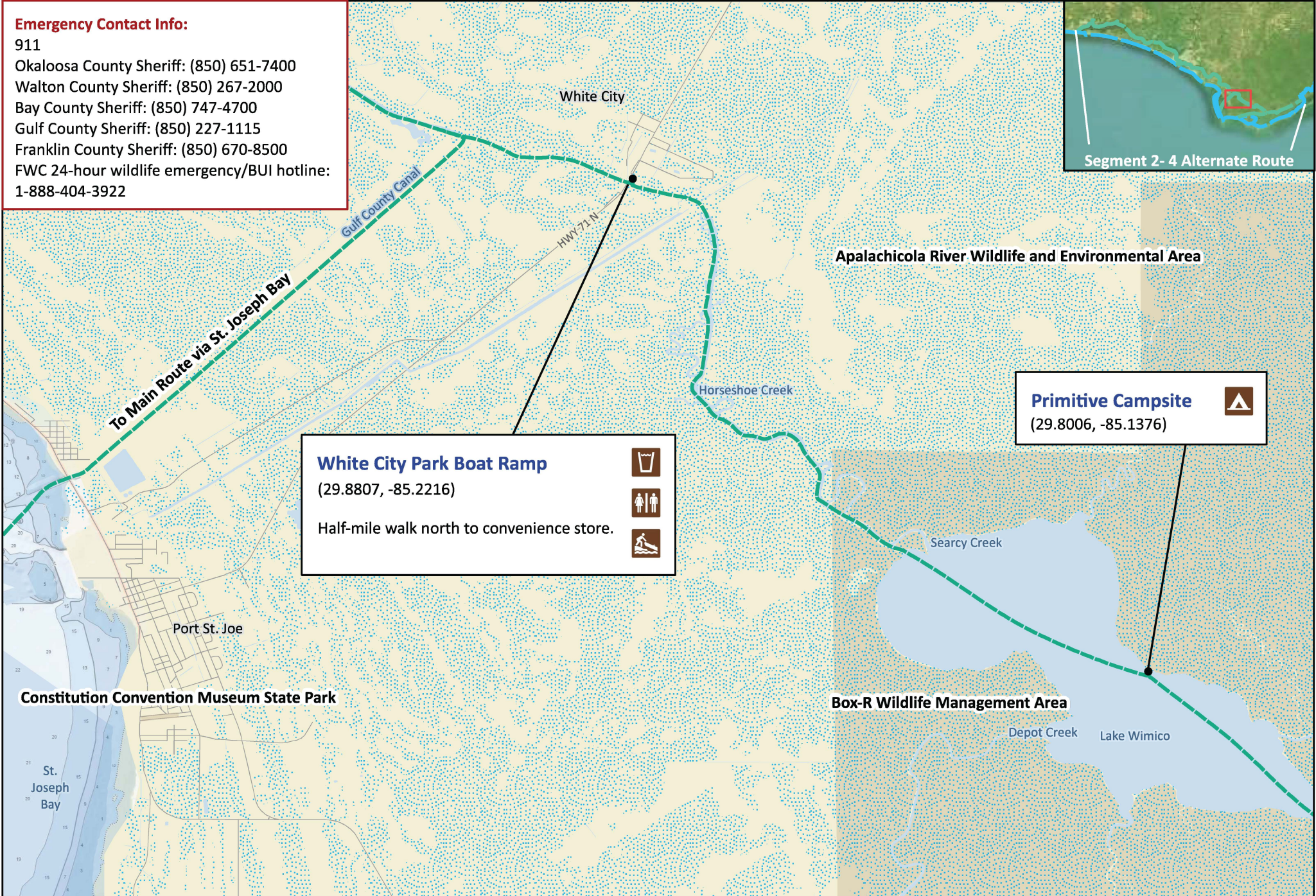


Emergency Contact Info:

911
Okaloosa County Sheriff: (850) 651-7400
Walton County Sheriff: (850) 267-2000
Bay County Sheriff: (850) 747-4700
Gulf County Sheriff: (850) 227-1115
Franklin County Sheriff: (850) 670-8500
FWC 24-hour wildlife emergency/BUI hotline:
1-888-404-3922



Segment 2-4 Alternate Route



Apalachicola River Wildlife and Environmental Area

Horseshoe Creek

Searcy Creek

Box-R Wildlife Management Area

Depot Creek Lake Wimico

White City

Port St. Joe

Constitution Convention Museum State Park

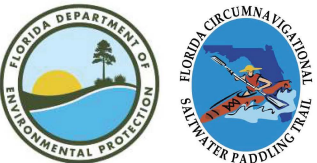
St. Joseph Bay

White City Park Boat Ramp
(29.8807, -85.2216)

Half-mile walk north to convenience store.

Primitive Campsite

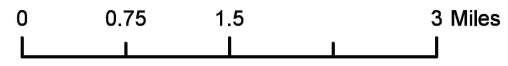
(29.8006, -85.1376)



Florida Circumnavigational Saltwater Paddling Trail

Segments 2-4: Alternate Panhandle Route (Map 9 of 12)

Begin: Destin Distance: 169 miles
End: Apalachicola Duration: 9 days

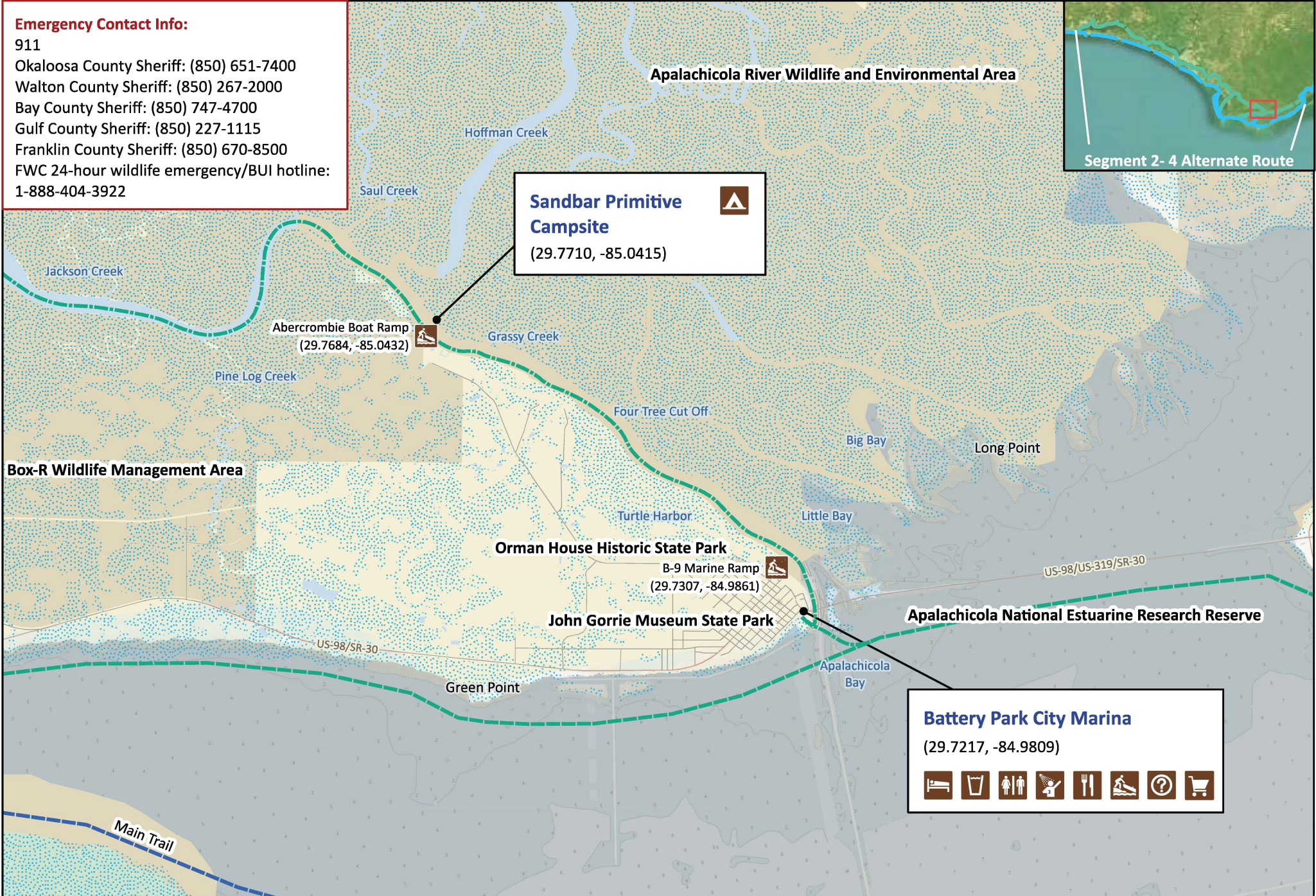


Disclaimer: This guide is intended as an aid to navigation only. A Global Positioning System (GPS) unit is required and persons are encouraged to supplement these maps with NOAA charts or other maps.
Updated: 11/22/2024



Emergency Contact Info:

911
Okaloosa County Sheriff: (850) 651-7400
Walton County Sheriff: (850) 267-2000
Bay County Sheriff: (850) 747-4700
Gulf County Sheriff: (850) 227-1115
Franklin County Sheriff: (850) 670-8500
FWC 24-hour wildlife emergency/BUI hotline:
1-888-404-3922



Sandbar Primitive Campsite

(29.7710, -85.0415)



Abercrombie Boat Ramp
(29.7684, -85.0432)



Orman House Historic State Park

B-9 Marine Ramp
(29.7307, -84.9861)



Battery Park City Marina

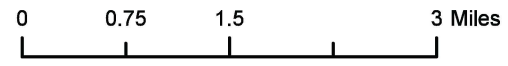
(29.7217, -84.9809)



Florida Circumnavigational Saltwater Paddling Trail
Segments 2-4: Alternate Panhandle Route (Map 10 of 12)

Begin: Destin
End: Apalachicola

Distance: 169 miles
Duration: 9 days



Disclaimer: This guide is intended as an aid to navigation only. A Global Positioning System (GPS) unit is required and persons are encouraged to supplement these maps with NOAA charts or other maps.
Updated: 11/22/2024



Emergency Contact Info:

911
Okaloosa County Sheriff: (850) 651-7400
Walton County Sheriff: (850) 267-2000
Bay County Sheriff: (850) 747-4700
Gulf County Sheriff: (850) 227-1115
Franklin County Sheriff: (850) 670-8500
FWC 24-hour wildlife emergency/BUI hotline:
1-888-404-3922



Segment 2-4 Alternate Route

Apalachicola River Wildlife and Environmental Area

Tate's Hell State Forest

Carrabelle Beach Park
(29.8293, -84.6923)

Picnic shelters available.

Sugar Hill Campsite
(29.7267, -84.7388)

Outdoor showers, water, and restrooms available 200 yards southeast of campsite. Camp in designated area. Avoid walking on dunes. Park Office (850) 927-2111

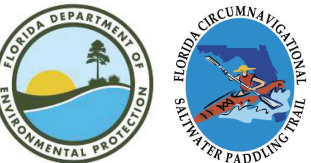
East Point
Eastpoint County Landing Ramp
(29.7353, -84.8802)

Millender Park
(29.7311, -84.8843)

Cat Point

Dr. Julian G. Bruce St. George Island State Park

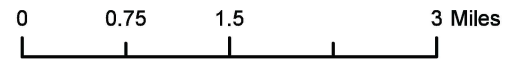
Apalachicola National Estuarine Research Reserve



Florida Circumnavigational Saltwater Paddling Trail

Segments 2-4: Alternate Panhandle Route (Map 11 of 12)

Begin: Destin
End: Apalachicola
Distance: 169 miles
Duration: 9 days



Disclaimer: This guide is intended as an aid to navigation only. A Global Positioning System (GPS) unit is required and persons are encouraged to supplement these maps with NOAA charts or other maps.
Updated: 11/22/2024



Emergency Contact Info:

911
Okaloosa County Sheriff: (850) 651-7400
Walton County Sheriff: (850) 267-2000
Bay County Sheriff: (850) 747-4700
Gulf County Sheriff: (850) 227-1115
Franklin County Sheriff: (850) 670-8500
FWC 24-hour wildlife emergency/BUI hotline:
1-888-404-3922



Segment 2-4 Alternate Route

Carrabelle Beach Park

(29.8293, -84.6923)

Picnic shelters available.



Tate's Hell State Forest

US-98/US-319/SR-30

Apalachicola National Estuarine Research Reserve

Sugar Hill Campsite

(29.7267, -84.7388)

Outdoor showers, water, and restrooms available 200 yards southeast of campsite.
Camp in designated area.
Avoid walking on dunes.
Park Office (850) 927-2111



Dr. Julian G. Bruce St. George Island State Park

Carrabelle City Ramp
(29.8523, -84.6682)

Marine St Ramp
(29.8464, -84.6642)

Dockside Marina Ramp
(29.8487, -84.6664)

Timber Island Ramp
(29.846, -84.6662)

McKissack Beach
Carrabelle River

St. George Sound

Pam Firman
Dog Island
Preserve

Dog Island

Jeff Lewis
Wilderness
Preserve

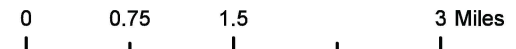


Florida Circumnavigational Saltwater Paddling Trail

Segments 2-4: Alternate Panhandle Route (Map 12 of 12)

Begin: Destin
End: Apalachicola

Distance: 169 miles
Duration: 9 days



Disclaimer: This guide is intended as an aid to navigation only. A Global Positioning System (GPS) unit is required and persons are encouraged to supplement these maps with NOAA charts or other maps.
Updated: 11/22/2024

