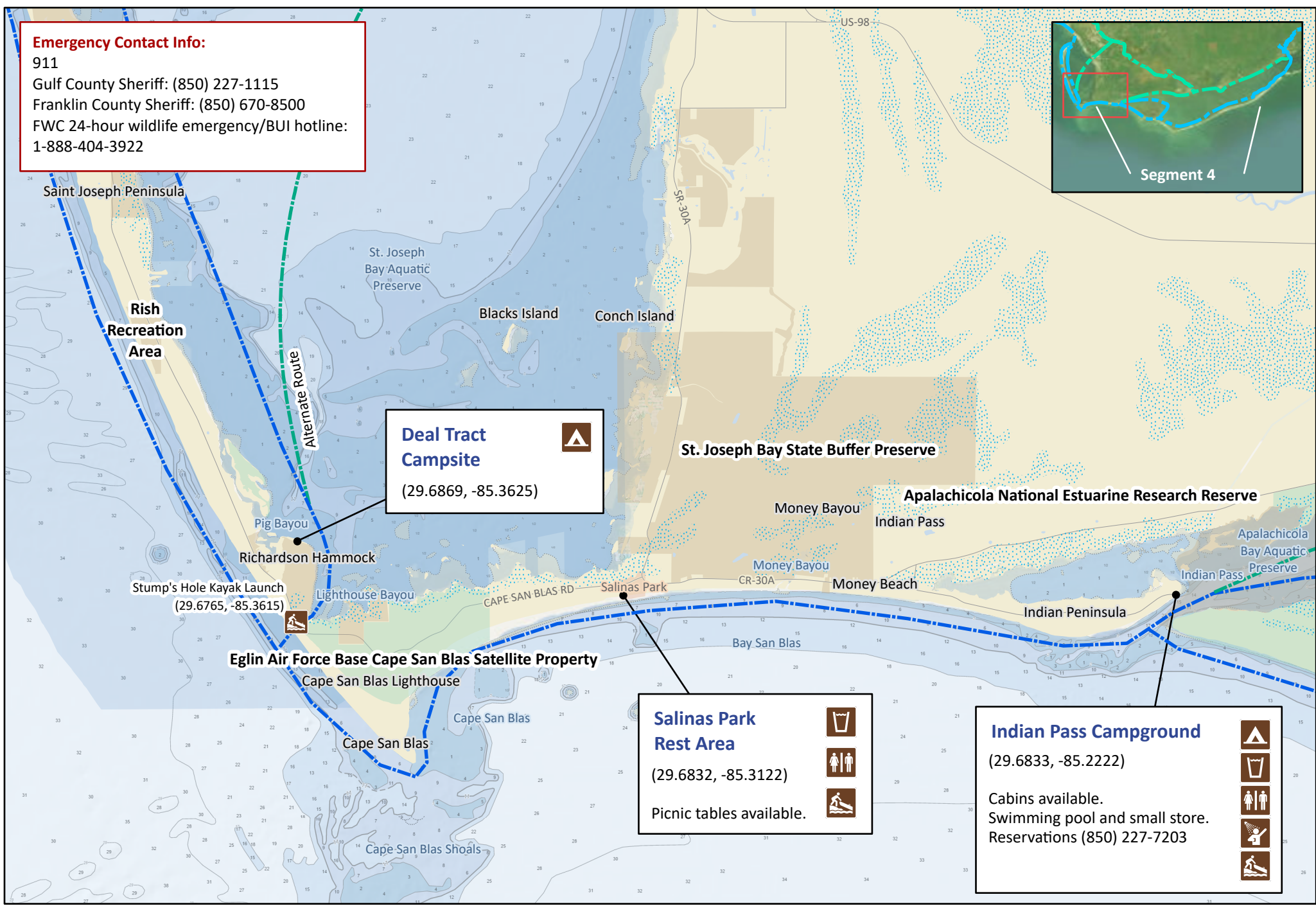
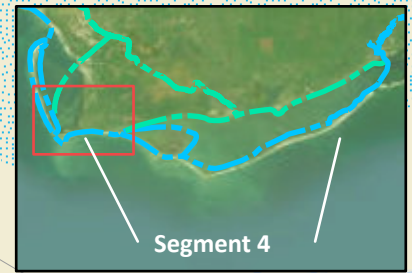


Emergency Contact Info:

911
Gulf County Sheriff: (850) 227-1115
Franklin County Sheriff: (850) 670-8500
FWC 24-hour wildlife emergency/BUI hotline:
1-888-404-3922



Deal Tract Campsite
(29.6869, -85.3625)

Salinas Park Rest Area
(29.6832, -85.3122)

Picnic tables available.

Indian Pass Campground
(29.6833, -85.2222)

Cabins available.
Swimming pool and small store.
Reservations (850) 227-7203

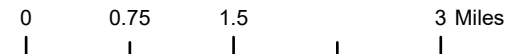


Florida Circumnavigational Saltwater Paddling Trail

Segment 4: Forgotten Coast (Map 1 of 4)

Begin: St. Joseph's Bay State Buffer Preserve's Deal Tract
End: Gap Point Campsite, Dr. Julian G. Bruce St. George Island State Park

Distance: 52.8 miles
Duration: 5 days



Disclaimer: This guide is intended as an aid to navigation only. A Global Positioning System (GPS) unit is required and persons are encouraged to supplement these maps with NOAA charts or other maps.
Updated: 9/28/2023



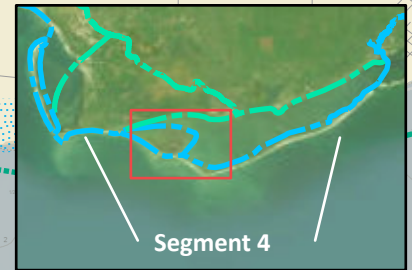
Emergency Contact Info:

911
Gulf County Sheriff: (850) 227-1115
Franklin County Sheriff: (850) 670-8500
FWC 24-hour wildlife emergency/BUI hotline:
1-888-404-3922

Box-R Wildlife Management Area

US-98/SR-30

Alternate Route



Segment 4

Apalachicola National Estuarine Research Reserve

Apalachicola Bay Aquatic Preserve

St. Vincent National Wildlife Refuge

Sheepshead Bayou

Big Bayou

Saint Vincent Point

Mallard Slough

Saint Vincent Island

Oyster Pond

Back Slough

West Pass

Sand Island

West Pass Primitive Campsite 1

(29.6263, -85.0953)

Government Dock Campsite 1

(29.6008, -85.0442)

West Pass Primitive Campsite 2

(29.6245, -85.0953)

Government Dock Campsite 2

(29.6005, -85.0440)

Higgins Shoal

New Inlet

Little St. George Island

Cape St. George State Reserve

Cape Saint George



Florida Circumnavigational Saltwater Paddling Trail

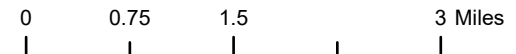
Segment 4: Forgotten Coast (Map 2 of 4)

Begin: St. Joseph's Bay State Buffer Preserve's Deal Tract

End: Gap Point Campsite, Dr. Julian G. Bruce St. George Island State Park

Distance: 52.8 miles

Duration: 5 days



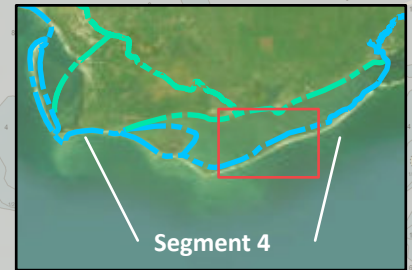
Disclaimer: This guide is intended as an aid to navigation only. A Global Positioning System (GPS) unit is required and persons are encouraged to supplement these maps with NOAA charts or other maps.

Updated: 9/28/2023



Emergency Contact Info:

911
Gulf County Sheriff: (850) 227-1115
Franklin County Sheriff: (850) 670-8500
FWC 24-hour wildlife emergency/BUI hotline:
1-888-404-3922



Apalachicola National Estuarine Research Reserve

Apalachicola Bay Aquatic Preserve

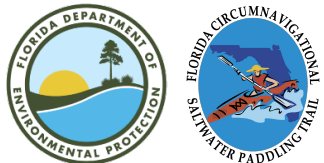
Apalachicola Bay

Sike's Cut Campsite 1
(29.6151, -84.9644)
Fire ring marks the spot.

Unit 4 Campsite
(29.6735, -84.8431)
Free and first-come, first-serve.

Sike's Cut Campsite 2
(29.6154, -84.9642)

Nick's Hole Campsite
(29.6406, -84.9176)
Porta-potties, picnic tables, and fire ring.
Sink available but water may or may not be turned on.

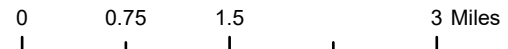


Florida Circumnavigational Saltwater Paddling Trail

Segment 4: Forgotten Coast (Map 3 of 4)

Begin: St. Joseph's Bay State Buffer Preserve's Deal Tract
End: Gap Point Campsite, Dr. Julian G. Bruce St. George Island State Park

Distance: 52.8 miles
Duration: 5 days

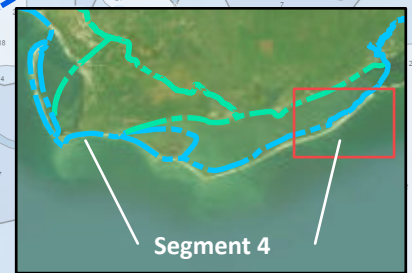


Disclaimer: This guide is intended as an aid to navigation only. A Global Positioning System (GPS) unit is required and persons are encouraged to supplement these maps with NOAA charts or other maps.
Updated: 9/28/2023



Emergency Contact Info:

911
Gulf County Sheriff: (850) 227-1115
Franklin County Sheriff: (850) 670-8500
FWC 24-hour wildlife emergency/BUI hotline:
1-888-404-3922



Apalachicola National Estuarine Research Reserve

Sugar Hill Campsite
(29.7267, -84.7388)

Outdoor showers, water, and restrooms available 200 yards southeast of campsite. Camp in designated area. Avoid walking on dunes. Park Office (850) 927-2111

Gap Point Campsite 2
(29.7088, -84.7737)

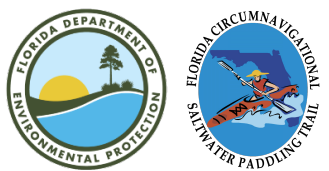
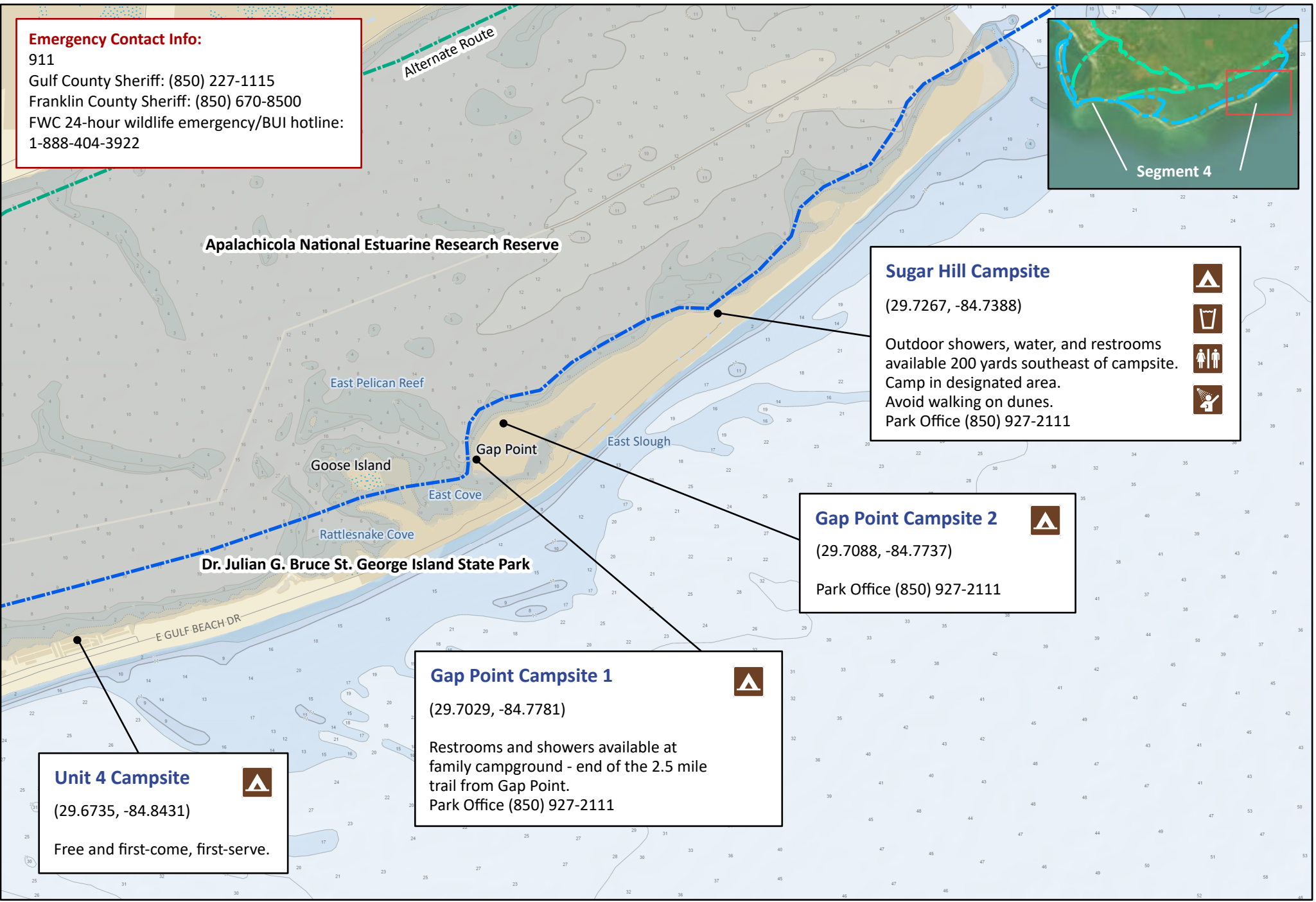
Park Office (850) 927-2111

Gap Point Campsite 1
(29.7029, -84.7781)

Restrooms and showers available at family campground - end of the 2.5 mile trail from Gap Point. Park Office (850) 927-2111

Unit 4 Campsite
(29.6735, -84.8431)

Free and first-come, first-serve.

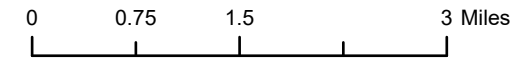


Florida Circumnavigational Saltwater Paddling Trail

Segment 4: Forgotten Coast (Map 4 of 4)

Begin: St. Joseph's Bay State Buffer Preserve's Deal Tract
End: Gap Point Campsite, Dr. Julian G. Bruce St. George Island State Park

Distance: 52.8 miles
Duration: 5 days



Disclaimer: This guide is intended as an aid to navigation only. A Global Positioning System (GPS) unit is required and persons are encouraged to supplement these maps with NOAA charts or other maps.
Updated: 9/28/2023

