

Emergency Contact Info:

911
Gulf County Sheriff: (850) 227-1115
Franklin County Sheriff: (850) 670-8500
FWC 24-hour wildlife emergency/BUI hotline:
1-888-404-3922

**St. Joe State Park Primitive
Campsite #7**



(29.8619, -85.3987)

CLOSED DUE TO HURRICANE MICHAEL

Park Picnic Area

(29.7758, -85.4021)



**St. Joe State Park
Boat Ramp**

(29.7642, -85.4029)



T. H. Stone Memorial St. Joseph Peninsula State Park

Windmark Conservation Easement

Palm Point

Saint Joseph Bay

Alternate Route

Port St. Joe

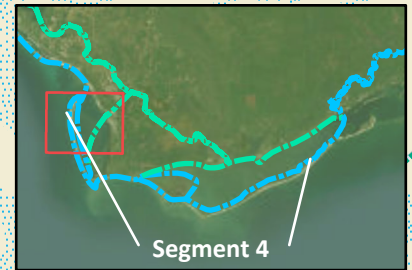
Constitution Convention Museum State Park

St. Joseph Bay Aquatic Preserve

St. Joseph Bay State Buffer Preserve

Saint Joseph Peninsula

Eagle Harbor



Segment 4

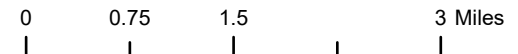


Florida Circumnavigational Saltwater Paddling Trail

Segment 4: Forgotten Coast (Map 1 of 5)

Begin: St. Joseph's Bay State Buffer Preserve's Deal Tract
End: Gap Point Campsite, Dr. Julian G. Bruce St. George Island State Park

Distance: 52.8 miles
Duration: 5 days

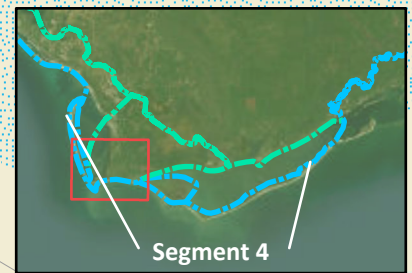


Disclaimer: This guide is intended as an aid to navigation only. A Global Positioning System (GPS) unit is required and persons are encouraged to supplement these maps with NOAA charts or other maps.
Updated: 12/2022

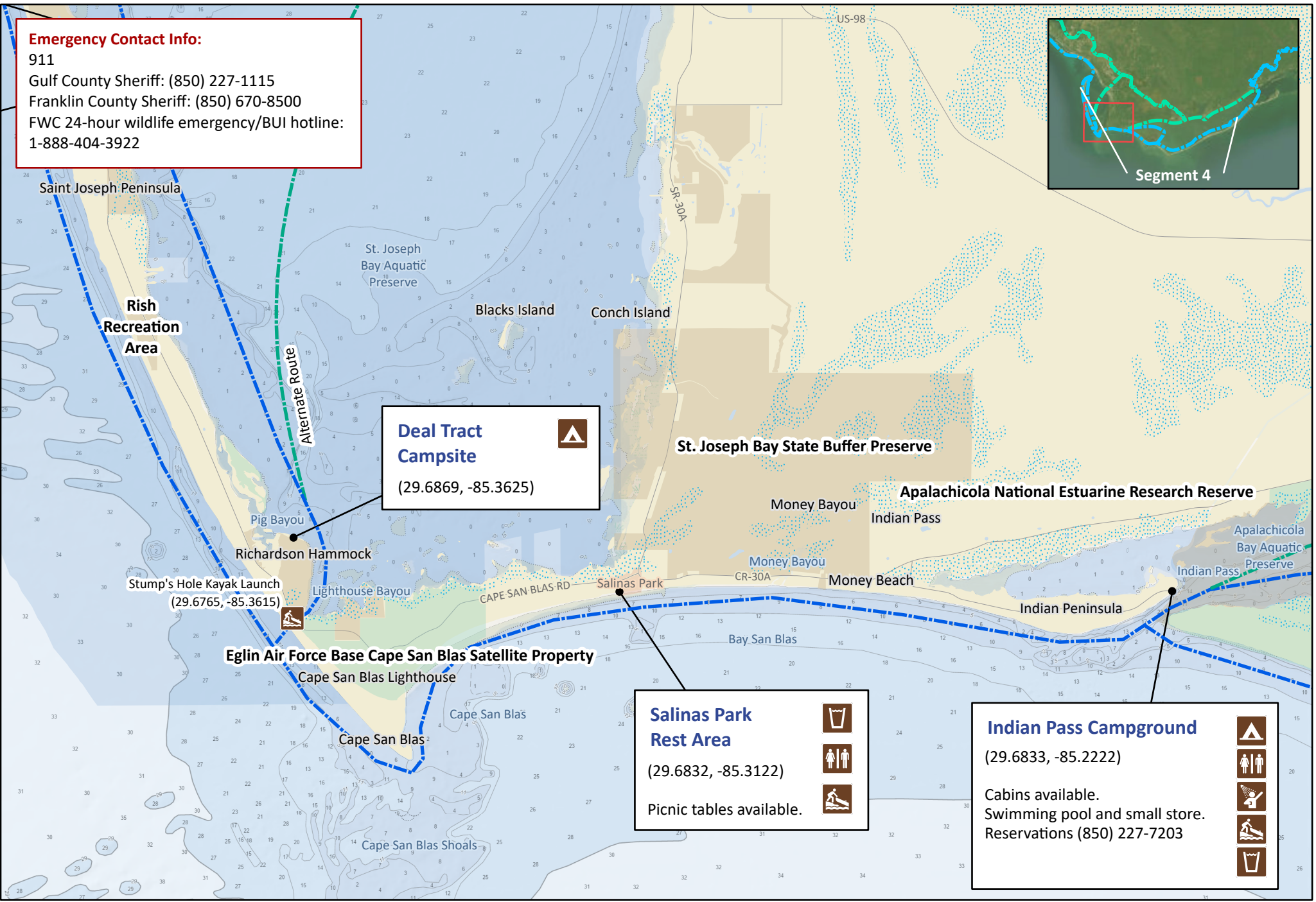


Emergency Contact Info:

911
Gulf County Sheriff: (850) 227-1115
Franklin County Sheriff: (850) 670-8500
FWC 24-hour wildlife emergency/BUI hotline:
1-888-404-3922



Segment 4






Deal Tract Campsite
(29.6869, -85.3625)








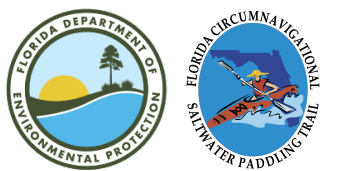
Salinas Park Rest Area
(29.6832, -85.3122)

Picnic tables available.

Indian Pass Campground
(29.6833, -85.2222)

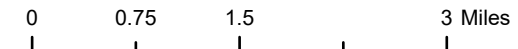
Cabins available.
Swimming pool and small store.
Reservations (850) 227-7203

Florida Circumnavigational Saltwater Paddling Trail
Segment 4: Forgotten Coast (Map 2 of 5)

Begin: St. Joseph's Bay State Buffer Preserve's Deal Tract
End: Gap Point Campsite, Dr. Julian G. Bruce St. George Island State Park

Distance: 52.8 miles
Duration: 5 days



Disclaimer: This guide is intended as an aid to navigation only. A Global Positioning System (GPS) unit is required and persons are encouraged to supplement these maps with NOAA charts or other maps.
Updated: 12/2022



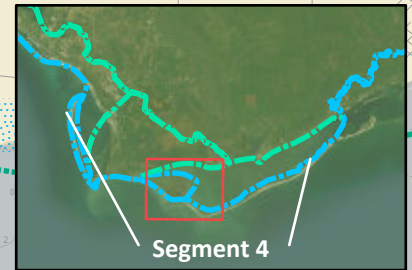
Emergency Contact Info:

911
Gulf County Sheriff: (850) 227-1115
Franklin County Sheriff: (850) 670-8500
FWC 24-hour wildlife emergency/BUI hotline:
1-888-404-3922

Box-R Wildlife Management Area

US-98/SR-30

Alternate Route



Segment 4

Apalachicola National Estuarine Research Reserve

Apalachicola Bay Aquatic Preserve

St. Vincent National Wildlife Refuge

Sheepshead Bayou

Saint Vincent Point

Big Bayou

Mallard Slough

Saint Vincent Island

Oyster Pond

Back Slough

West Pass

Sand Island

West Pass Primitive Campsite 1

(29.6263, -85.0953)

Government Dock Campsite 1

(29.6008, -85.0442)

West Pass Primitive Campsite 2

(29.6245, -85.0953)

Government Dock Campsite 2

(29.6005, -85.0440)

Higgins Shoal

New Inlet

Little St. George Island
Cape St. George State Reserve

Cape Saint George

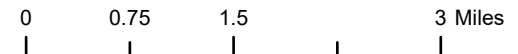


Florida Circumnavigational Saltwater Paddling Trail

Segment 4: Forgotten Coast (Map 3 of 5)

Begin: St. Joseph's Bay State Buffer Preserve's Deal Tract
End: Gap Point Campsite, Dr. Julian G. Bruce St. George Island State Park

Distance: 52.8 miles
Duration: 5 days

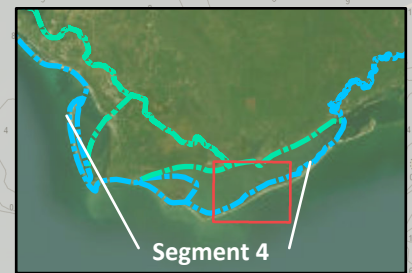


Disclaimer: This guide is intended as an aid to navigation only. A Global Positioning System (GPS) unit is required and persons are encouraged to supplement these maps with NOAA charts or other maps.
Updated: 12/2022



Emergency Contact Info:

911
Gulf County Sheriff: (850) 227-1115
Franklin County Sheriff: (850) 670-8500
FWC 24-hour wildlife emergency/BUI hotline:
1-888-404-3922



Apalachicola National Estuarine Research Reserve

Apalachicola Bay Aquatic Preserve

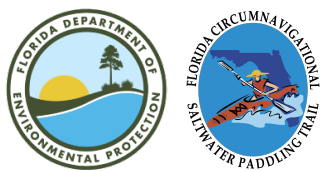
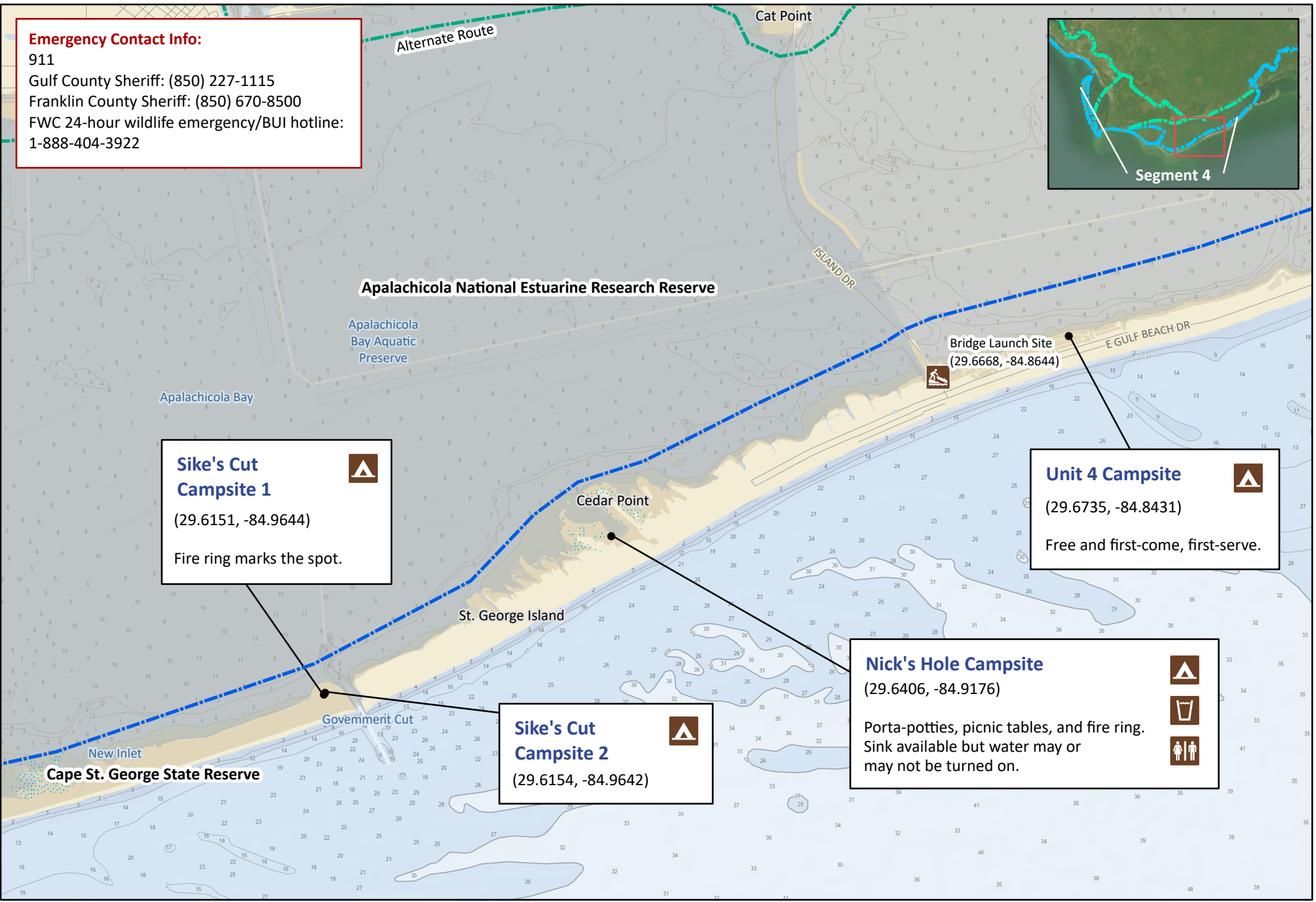
Apalachicola Bay

Sike's Cut Campsite 1
(29.6151, -84.9644)
Fire ring marks the spot.

Unit 4 Campsite
(29.6735, -84.8431)
Free and first-come, first-serve.

Nick's Hole Campsite
(29.6406, -84.9176)
Porta-potties, picnic tables, and fire ring.
Sink available but water may or may not be turned on.

Sike's Cut Campsite 2
(29.6154, -84.9642)

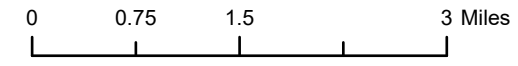


Florida Circumnavigational Saltwater Paddling Trail

Segment 4: Forgotten Coast (Map 4 of 5)

Begin: St. Joseph's Bay State Buffer Preserve's Deal Tract
End: Gap Point Campsite, Dr. Julian G. Bruce St. George Island State Park

Distance: 52.8 miles
Duration: 5 days

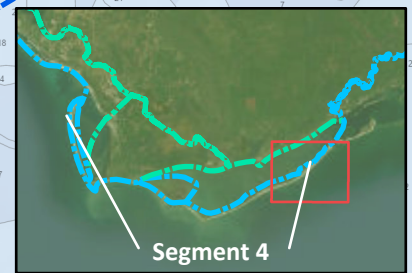


Disclaimer: This guide is intended as an aid to navigation only. A Global Positioning System (GPS) unit is required and persons are encouraged to supplement these maps with NOAA charts or other maps.
Updated: 12/2022



Emergency Contact Info:

911
Gulf County Sheriff: (850) 227-1115
Franklin County Sheriff: (850) 670-8500
FWC 24-hour wildlife emergency/BUI hotline:
1-888-404-3922



Apalachicola National Estuarine Research Reserve

Sugar Hill Campsite
(29.7267, -84.7388)

Outdoor showers, water, and restrooms available 200 yards southeast of campsite. Camp in designated area. Avoid walking on dunes. Park Office (850) 927-2111

Gap Point Campsite 2
(29.7088, -84.7737)

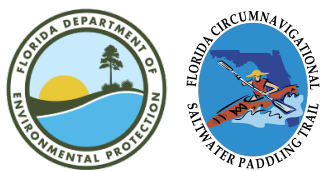
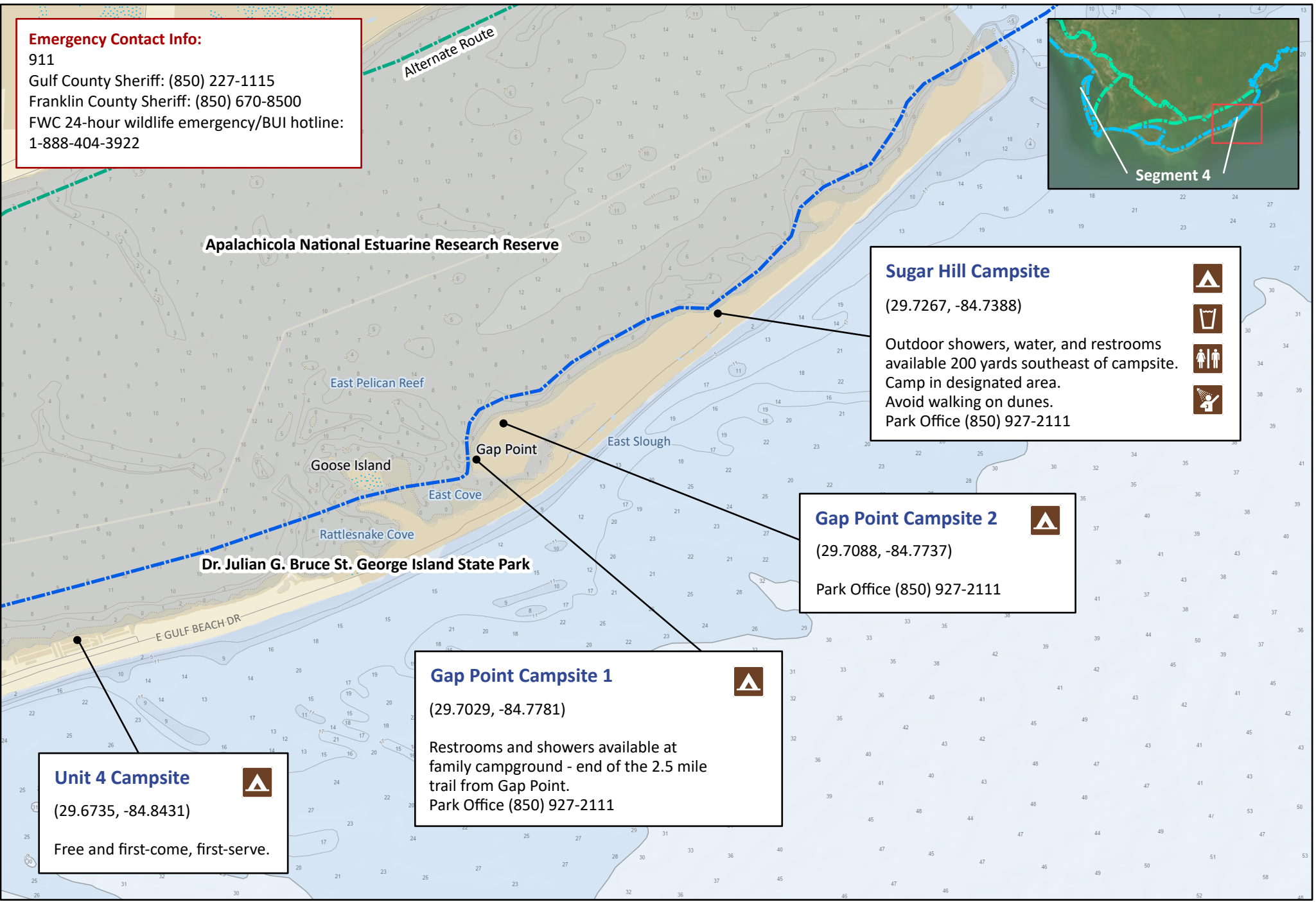
Park Office (850) 927-2111

Gap Point Campsite 1
(29.7029, -84.7781)

Restrooms and showers available at family campground - end of the 2.5 mile trail from Gap Point. Park Office (850) 927-2111

Unit 4 Campsite
(29.6735, -84.8431)

Free and first-come, first-serve.

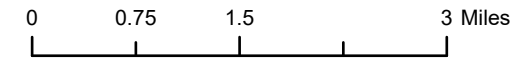


Florida Circumnavigational Saltwater Paddling Trail

Segment 4: Forgotten Coast (Map 5 of 5)

Begin: St. Joseph's Bay State Buffer Preserve's Deal Tract
End: Gap Point Campsite, Dr. Julian G. Bruce St. George Island State Park

Distance: 52.8 miles
Duration: 5 days



Disclaimer: This guide is intended as an aid to navigation only. A Global Positioning System (GPS) unit is required and persons are encouraged to supplement these maps with NOAA charts or other maps.
Updated: 12/2022

