

**Emergency Contact Info:**

911  
Franklin County Sheriff: (850) 670-8500  
Wakulla County Sheriff: (850) 745-7100  
FWC 24-hour wildlife emergency/BUI hotline:  
1-888-404-3922

**Tate's Hell State Forest**

**Warren Bluff Hunt Campsite (PC#48)**

(29.8735, -84.6965)

Hunting campsite.  
Reservations (877) 879-3859

**Oxbow Campsite (PC#47)**

(29.8705, -84.6827)

Reservations  
(877) 879-3859

**Sunday Rollaway Hunt Campsite (PC#46)**

(29.9029, -84.6517)

Hunting campsite.  
Reservations (877) 879-3859

**Rock Landing Campsite (PC#41-43)**

(29.9793, -84.5683)

Reservations  
(877) 879-3859

**Moorings of Carrabelle**

(29.8521, -84.6752)



Lanark Launch Site  
(29.8809, -84.5953)

**Crooked River PC#45**

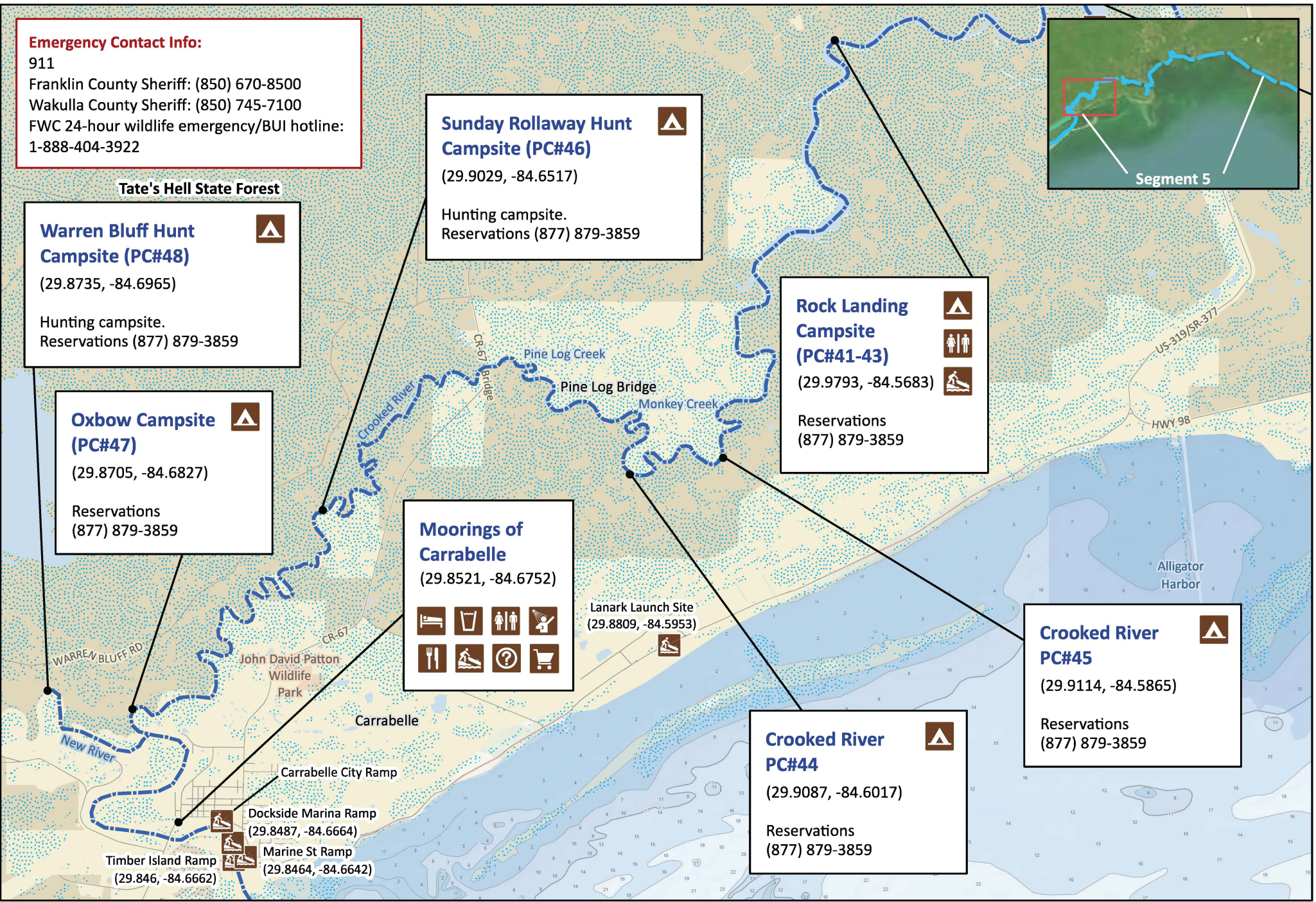
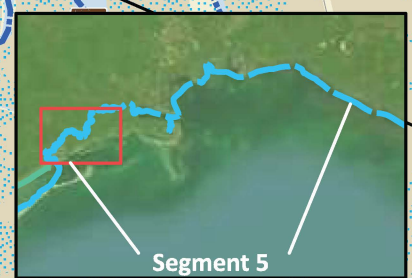
(29.9114, -84.5865)

Reservations  
(877) 879-3859

**Crooked River PC#44**

(29.9087, -84.6017)

Reservations  
(877) 879-3859



**Florida Circumnavigational Saltwater Paddling Trail**

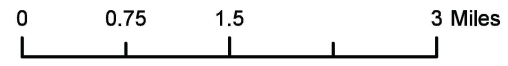
**Segment 5: Crooked River/St. Marks Refuge (Map 1 of 5)**

Begin: Carrabelle - The Moorings

End: Econfina River State Park

Distance: 80.1 miles

Duration: 8-9 days



Disclaimer: This guide is intended as an aid to navigation only. A Global Positioning System (GPS) unit is required and persons are encouraged to supplement these maps with NOAA charts or other maps.  
Updated: 11/22/2024



**Emergency Contact Info:**

911  
Franklin County Sheriff: (850) 670-8500  
Wakulla County Sheriff: (850) 745-7100  
FWC 24-hour wildlife emergency/BUI hotline:  
1-888-404-3922

**Womack Creek Campsite**

(30.0023, -84.5403)

13 sites - good for large groups.  
Hot showers.  
Reservations (877) 879-3859



**Levy Ditch Research Natural Area**

Wakulla County Visitor Center  
(30.0346, -84.3889)

Woolley Park

Gulf Specimen Marine Lab and Aquarium  
(30.0238, -84.3862)

**St. Marks National Wildlife Refuge**

Kayak Launch  
(30.006, -84.383)

**Park Youth Camp**

(30.0084, -84.4745)

Adult groups of six or more.  
First-come, first-serve.  
Reservations (850) 962-2771



**Ochlockonee River State Park**

Park Ramp  
(29.9993, -84.4806)

Cow Creek Ramp  
(29.9859, -84.4882)

**Bald Point State Park**

McIntyre Rd Ramp  
(29.9816, -84.526)

**Loop Road Campsite (PC#28)**

(29.9899, -84.5355)

Hunting campsite.  
Reservations  
(877) 879-3859



**Holiday Campground**

(29.9779, -84.3847)

Bathhouse, laundromat,  
pool, and recreation room.  
Restaurants and stores nearby.  
Reservations (850) 984-5757



**Chaires Creek Campsite**

(29.9410, -84.3544)

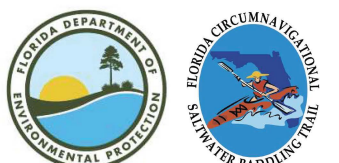
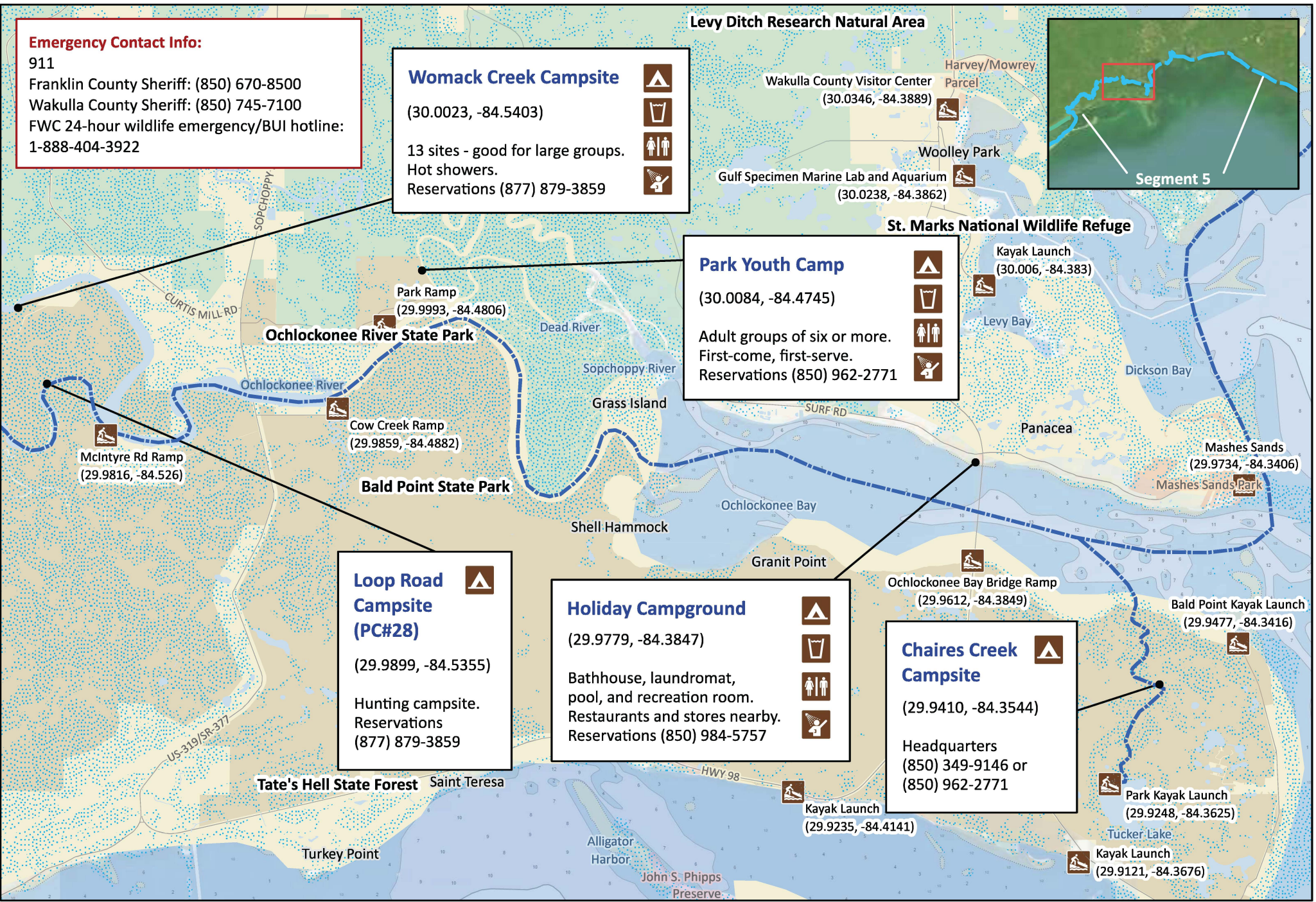
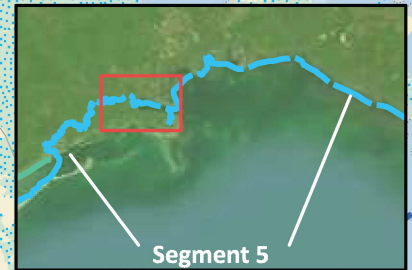
Headquarters  
(850) 349-9146 or  
(850) 962-2771



Bald Point Kayak Launch  
(29.9477, -84.3416)

Park Kayak Launch  
(29.9248, -84.3625)

Kayak Launch  
(29.9121, -84.3676)

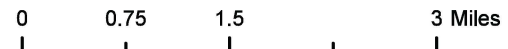


**Florida Circumnavigational Saltwater Paddling Trail**

**Segment 5: Crooked River/St. Marks Refuge (Map 2 of 5)**

Begin: Carrabelle - The Moorings  
End: Econfina River State Park

Distance: 80.1 miles  
Duration: 8-9 days

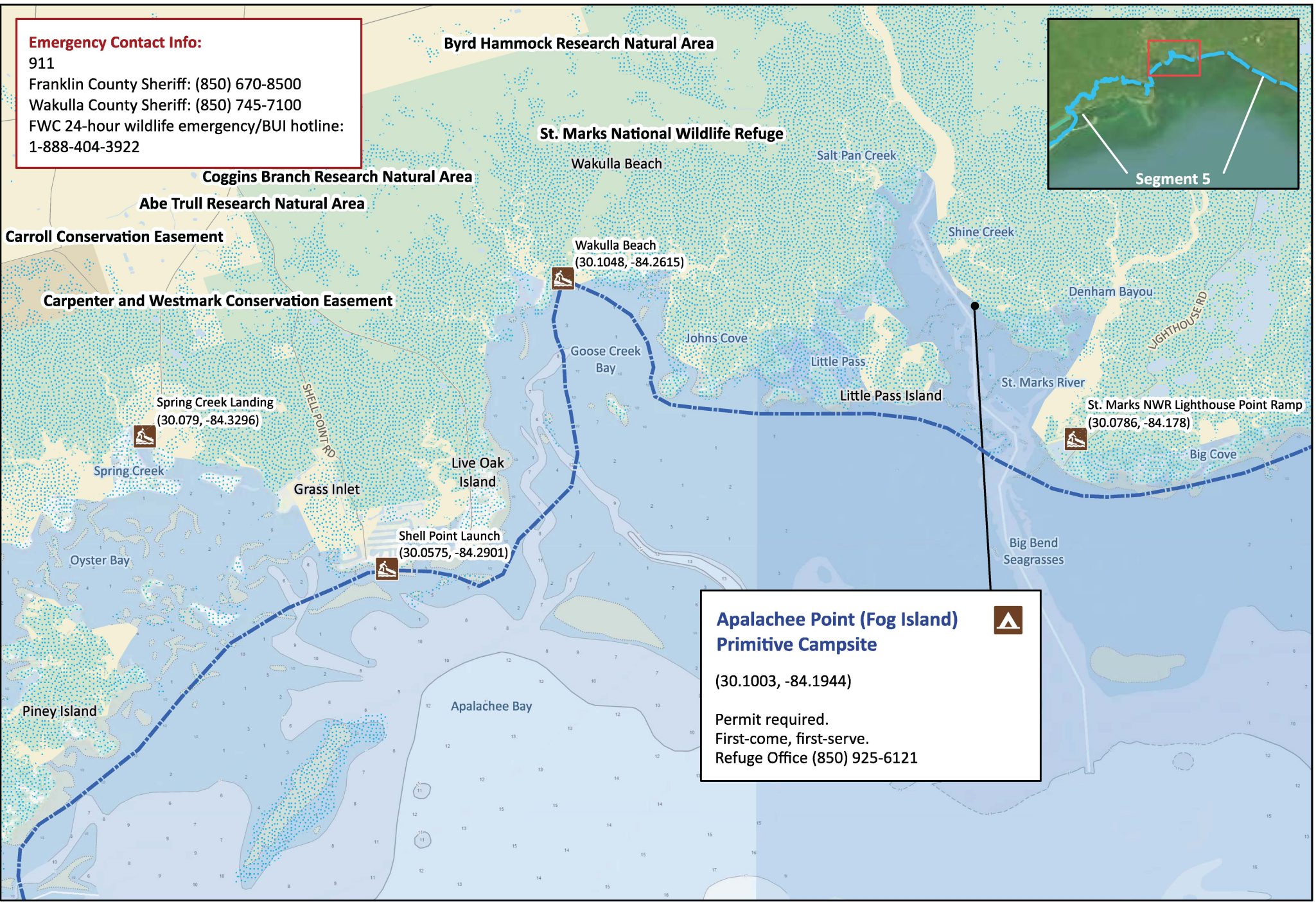
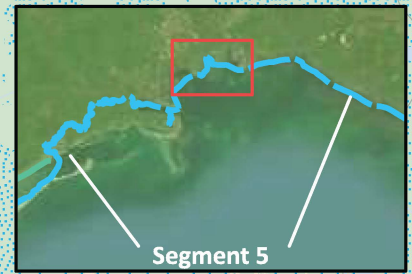


Disclaimer: This guide is intended as an aid to navigation only. A Global Positioning System (GPS) unit is required and persons are encouraged to supplement these maps with NOAA charts or other maps.  
Updated: 11/22/2024



**Emergency Contact Info:**

911  
Franklin County Sheriff: (850) 670-8500  
Wakulla County Sheriff: (850) 745-7100  
FWC 24-hour wildlife emergency/BUI hotline:  
1-888-404-3922



Byrd Hammock Research Natural Area

St. Marks National Wildlife Refuge

Coggins Branch Research Natural Area

Abe Trull Research Natural Area

Carroll Conservation Easement

Carpenter and Westmark Conservation Easement

Wakulla Beach  
(30.1048, -84.2615)

Spring Creek Landing  
(30.079, -84.3296)

Shell Point Launch  
(30.0575, -84.2901)

St. Marks NWR Lighthouse Point Ramp  
(30.0786, -84.178)

**Apalachee Point (Fog Island)  
Primitive Campsite**

(30.1003, -84.1944)

Permit required.  
First-come, first-serve.  
Refuge Office (850) 925-6121

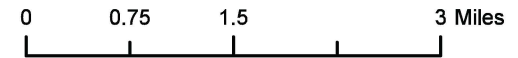


**Florida Circumnavigational Saltwater Paddling Trail**

**Segment 5: Crooked River/St. Marks Refuge (Map 3 of 5)**

Begin: Carrabelle - The Moorings  
End: Econfina River State Park

Distance: 80.1 miles  
Duration: 8-9 days

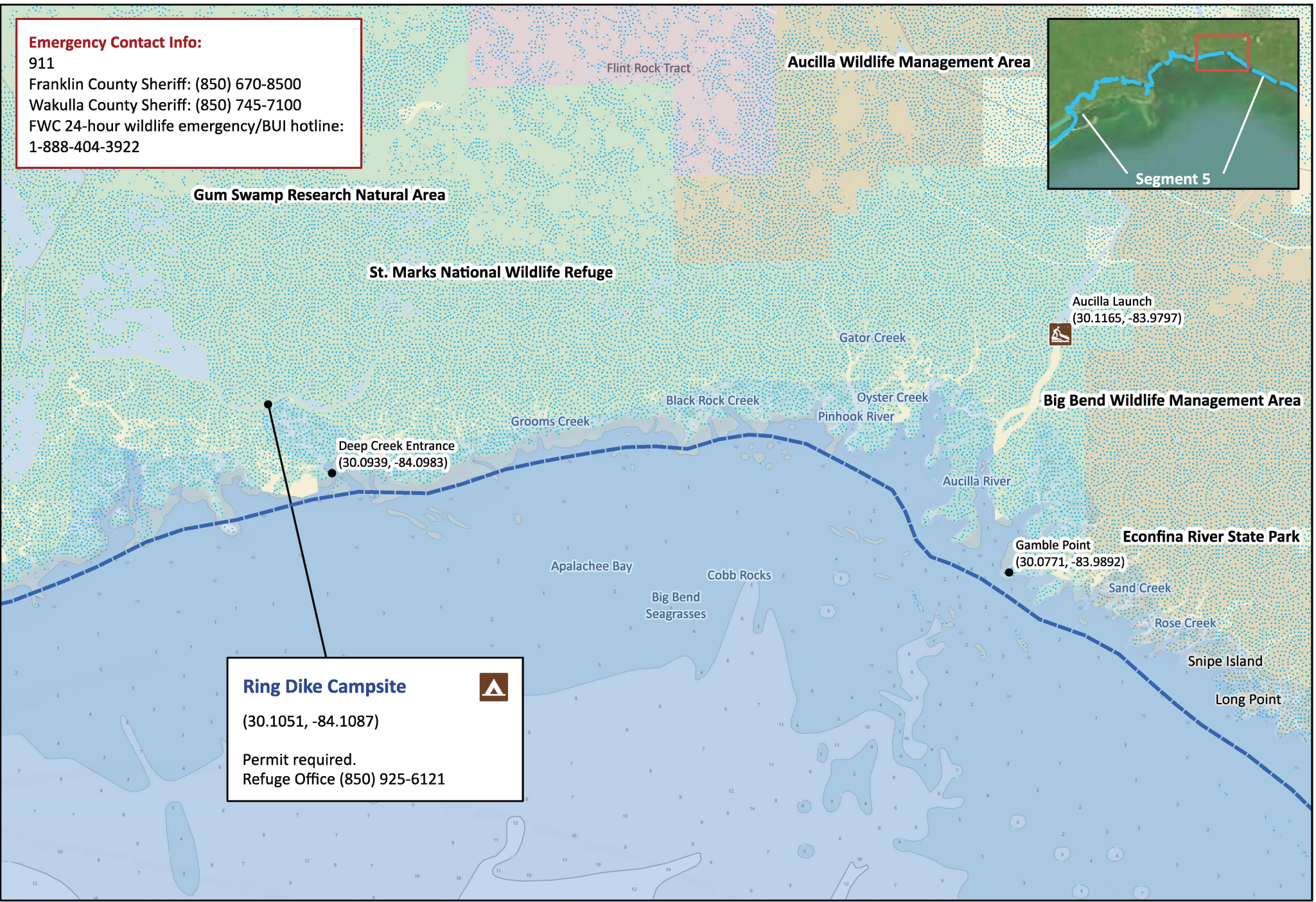
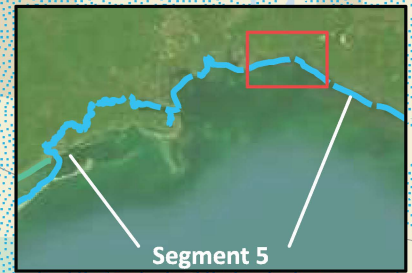


Disclaimer: This guide is intended as an aid to navigation only. A Global Positioning System (GPS) unit is required and persons are encouraged to supplement these maps with NOAA charts or other maps.  
Updated: 11/22/2024



**Emergency Contact Info:**

911  
Franklin County Sheriff: (850) 670-8500  
Wakulla County Sheriff: (850) 745-7100  
FWC 24-hour wildlife emergency/BUI hotline:  
1-888-404-3922



**Gum Swamp Research Natural Area**

**St. Marks National Wildlife Refuge**

**Aucilla Wildlife Management Area**

**Big Bend Wildlife Management Area**

**Econfina River State Park**

**Deep Creek Entrance**  
(30.0939, -84.0983)

**Aucilla Launch**  
(30.1165, -83.9797)

**Gamble Point**  
(30.0771, -83.9892)

**Ring Dike Campsite**  
(30.1051, -84.1087)  
Permit required.  
Refuge Office (850) 925-6121

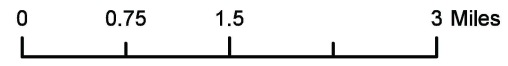


**Florida Circumnavigational Saltwater Paddling Trail**

**Segment 5: Crooked River/St. Marks Refuge (Map 4 of 5)**

Begin: Carrabelle - The Moorings  
End: Econfina River State Park

Distance: 80.1 miles  
Duration: 8-9 days

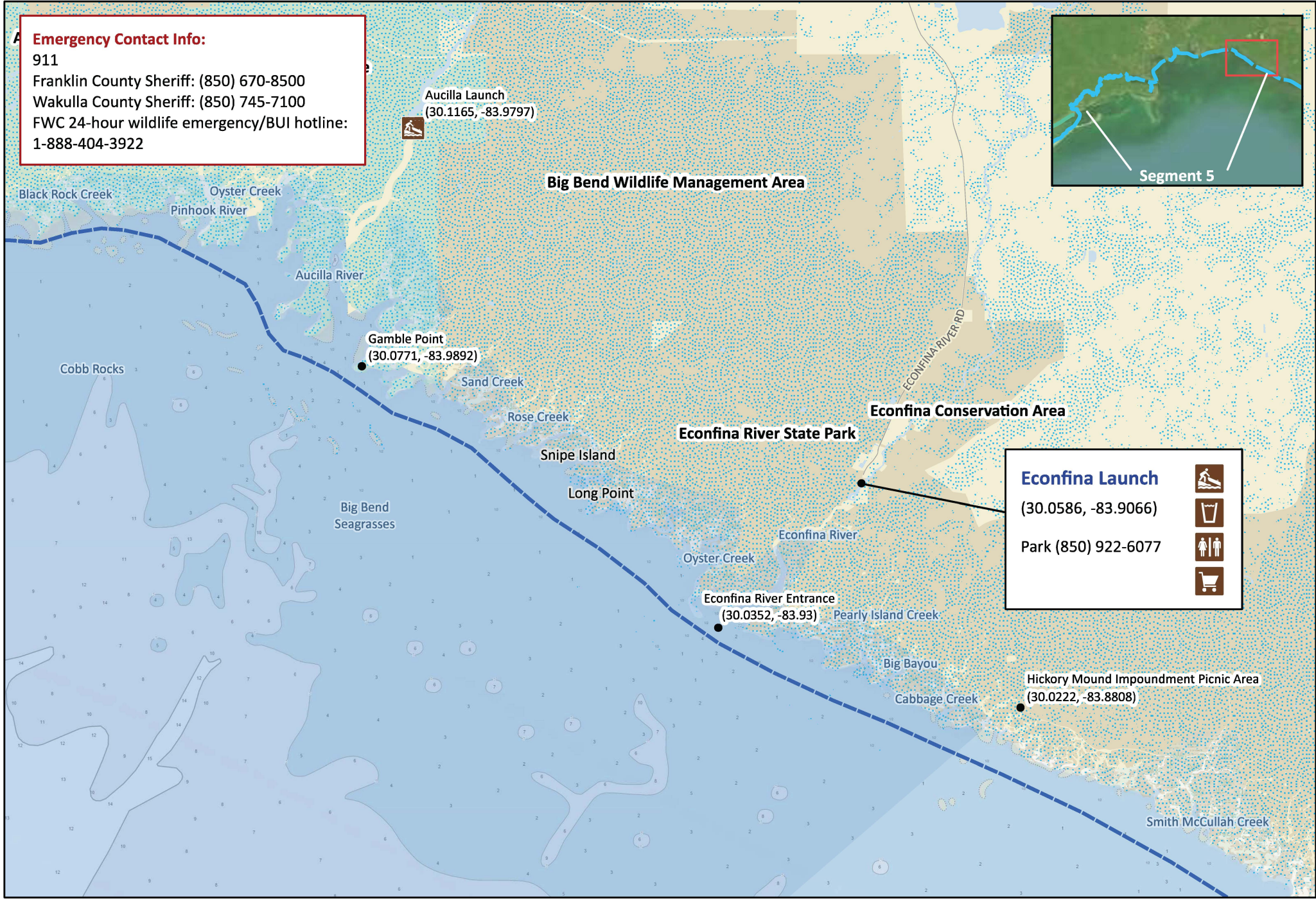
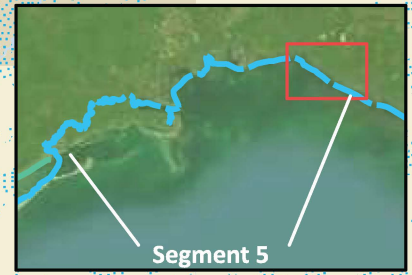


Disclaimer: This guide is intended as an aid to navigation only. A Global Positioning System (GPS) unit is required and persons are encouraged to supplement these maps with NOAA charts or other maps.  
Updated: 11/22/2024



**Emergency Contact Info:**

911  
Franklin County Sheriff: (850) 670-8500  
Wakulla County Sheriff: (850) 745-7100  
FWC 24-hour wildlife emergency/BUI hotline:  
1-888-404-3922



Aucilla Launch  
(30.1165, -83.9797)

Gamble Point  
(30.0771, -83.9892)

Econfina River Entrance  
(30.0352, -83.93)

**Econfina Launch**

(30.0586, -83.9066)

Park (850) 922-6077

Hickory Mound Impoundment Picnic Area  
(30.0222, -83.8808)

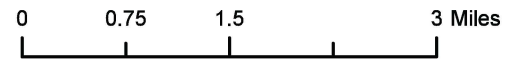


**Florida Circumnavigational Saltwater Paddling Trail**

**Segment 5: Crooked River/St. Marks Refuge (Map 5 of 5)**

Begin: Carrabelle - The Moorings  
End: Econfina River State Park

Distance: 80.1 miles  
Duration: 8-9 days



Disclaimer: This guide is intended as an aid to navigation only. A Global Positioning System (GPS) unit is required and persons are encouraged to supplement these maps with NOAA charts or other maps.  
Updated: 11/22/2024

