



Shingle Creek Headwater Canals WBID 3169G1 and 3169A

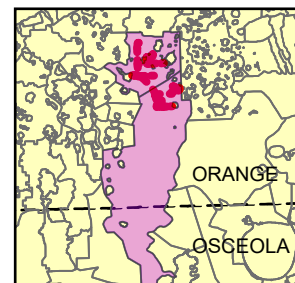
October 2025

--- Stream Exclusions

 **WBID**

 Stream/River
 Canal/Ditch

0 1.25 2.5
Miles



This map was prepared by the Water Quality Standards Program, Division of Environmental Assessment and Restoration. For more information please contact (850) 245-8346.