



Southwest District – Executive

December 4, 2024

	Business Planning
	Compliance
	Permitting

SMS



Kelley Boatwright
District Director
District Management

SES



Pamala Vazquez
Assistant District Director
District Management

SES



Shannon Herbon
Program Administrator
District Management

SES



Charley Oneal
Program Administrator
District Management, Personnel,
Purchasing

CS



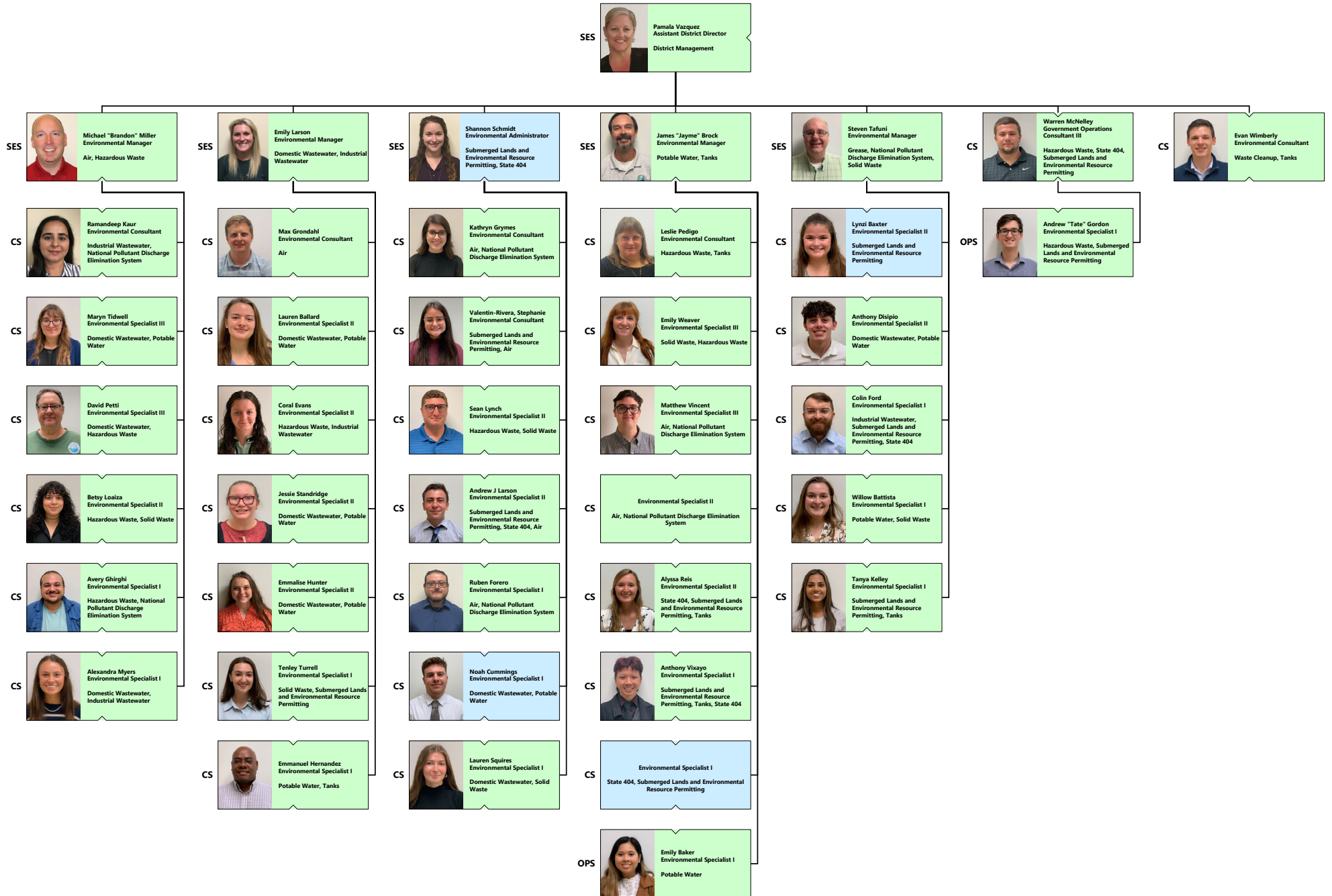
Brian Humphreys
Public Information Specialist II
Media Relations



Southwest District – Compliance Assurance Program

December 4, 2024

- Business Planning
- Compliance
- Permitting

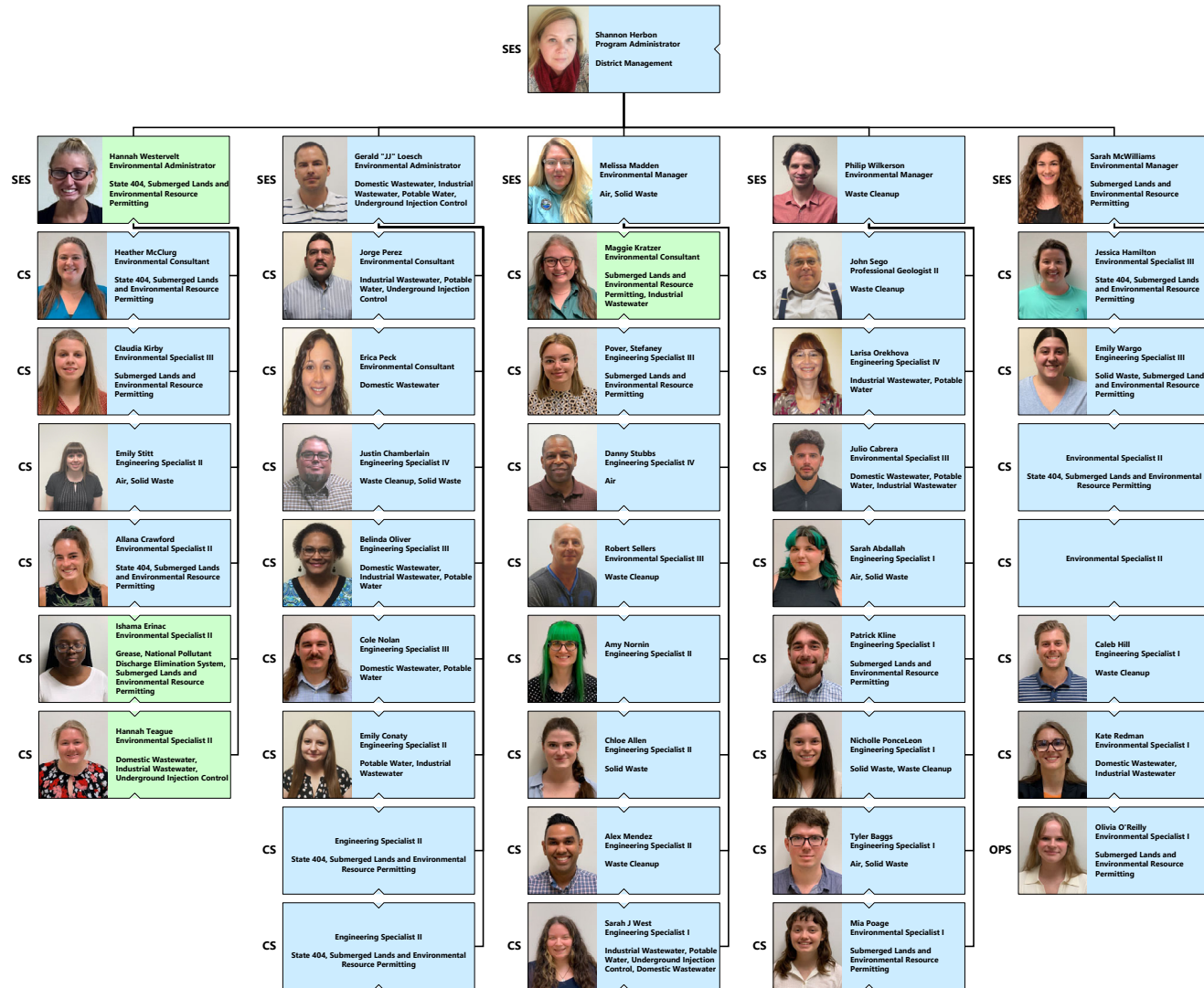




Southwest District – Permitting

December 4, 2024

- Business Planning
- Compliance
- Permitting





Southwest District – Business Planning

December 4, 2024

Business Planning
Compliance
Permitting

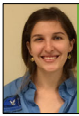




Other Positions at the Southwest District

December 4, 2024

Division of Environmental Assessment and Restoration (DEAR)

 Sarah Meyer
SES Environmental Administrator

 Ben Paswater
CS Environmental Specialist III

 Ken Turman
CS Environmental Specialist III

 Megan Maloney
CS Environmental Specialist II

 Kevin Grace
CS Environmental Specialist II

 Hannah Henning
OPS Environmental Specialist II

Vacant
OPS

Vacant
Environmental

Vacant
Intern

Phosphate Management

 Lance Kautz
SES Environmental Administrator

 Jessica Pein
CS Environmental Consultant

 Gordon D'Abreu
CS


 Derrick Hudson
CS

 Evelyn Sardinas
CS Environmental Specialist III

 Diego GravedePeralta
CS

 Sadira Jenarine
CS Environmental Specialist II

 Andrew Ferguson
CS

 Lucienne Metellus
CS Staff Assistant

Office of Emergency Response (OER)

 Jasson Drinkard
CS Environmental Consultant

 Jonathan Belcher
CS Environmental Specialist II

Vacant
CS

Division of Water Restoration Assistance (DWRA)

 James Parnell
OPS Environmental Specialist III

Division of Air Resources Management (DARM)

 Natalie Beatty
CS Environmental Specialist I

Underground Injection Control (UIC)

 Daniel Warmke
CS Professional Geologist I