

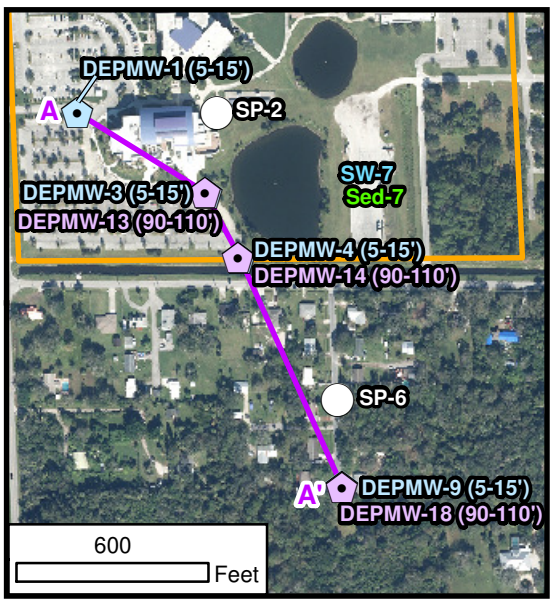
**Legend**

Water Table

Inferred Lithology

**Lithology**

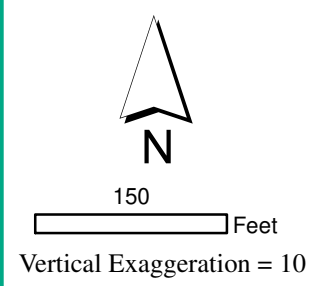
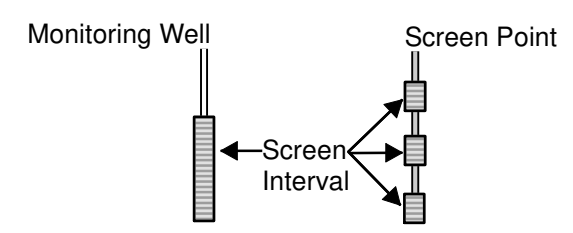
- Poorly graded SAND
- Poorly graded SAND with shell fragments
- Silty CLAY/Clayey SILT/Sandy CLAY/Sandy SILT
- Silty SAND/Clayey SAND
- Limestone with shell fragments

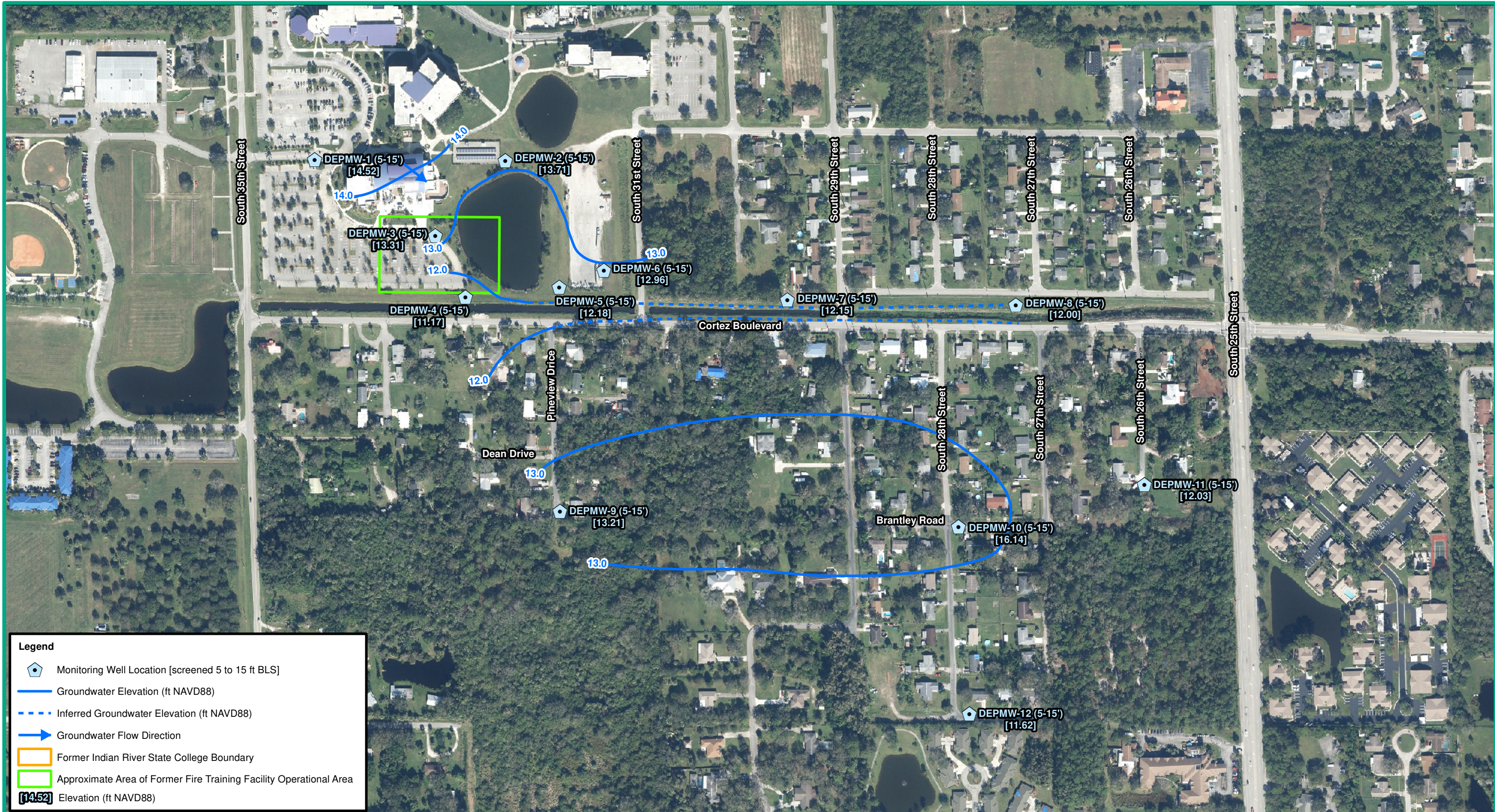


**Figure 4**  
**Cross Section A-A'**  
**Former Indian River State College**  
**Fort Pierce, St. Lucie County, Florida**

**Notes:**  
 1. ft BLS indicates feet below land surface.  
 2. Source of 2017 aerial: Florida Department of Transportation Aerial Photo Look Up System website

**Date: January 27, 2021**

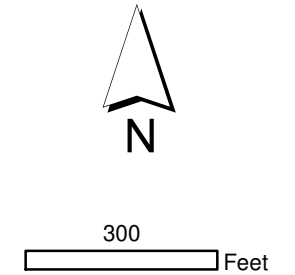




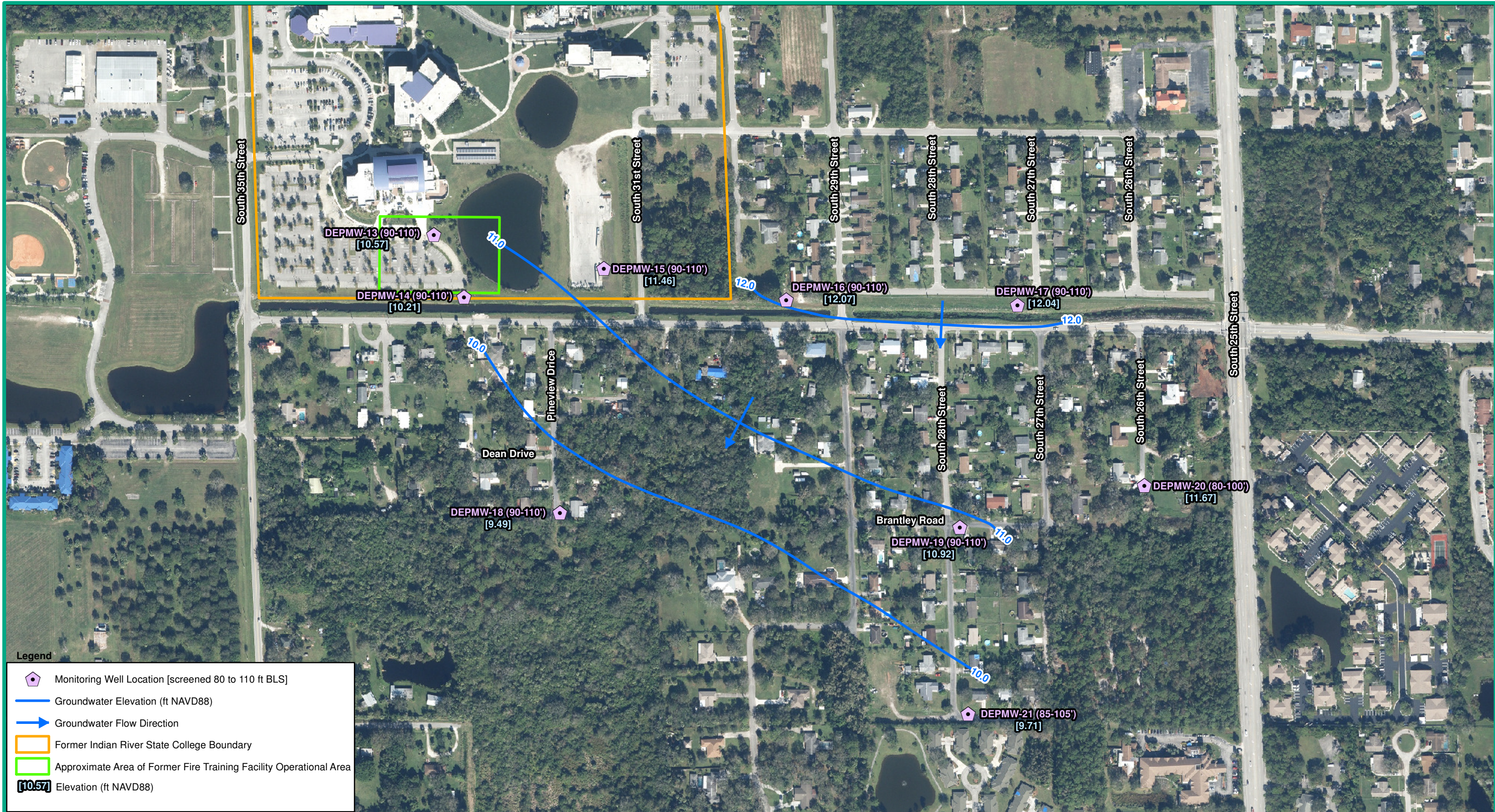
**Figure 5**  
**Groundwater Elevation Contour Map 5 to 15 ft BLS**  
**December 2020**  
**Former Indian River State College**  
**Fort Pierce, St. Lucie County, Florida**

**Notes:**

1. NAVD88 indicates North American Vertical Datum of 1988.
2. ft BLS indicates feet below land surface.
3. Depth-to-water measurements were collected 8 December 2020.
4. Water level of the ditch parallel to Cortez Boulevard was not considered when developing groundwater elevation contours.
5. Water level elevation of retention pond was assumed approximately 12.5 feet based on field observation.
6. Approximate Indian River State College Boundary obtained from St. Lucie County Property Appraiser (file downloaded 6 February 2020).
7. Source of 2017 aerial: Florida Department of Transportation Aerial Photo Look Up System website.

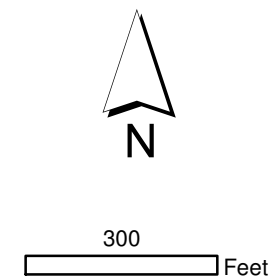


Date: February 04, 2021

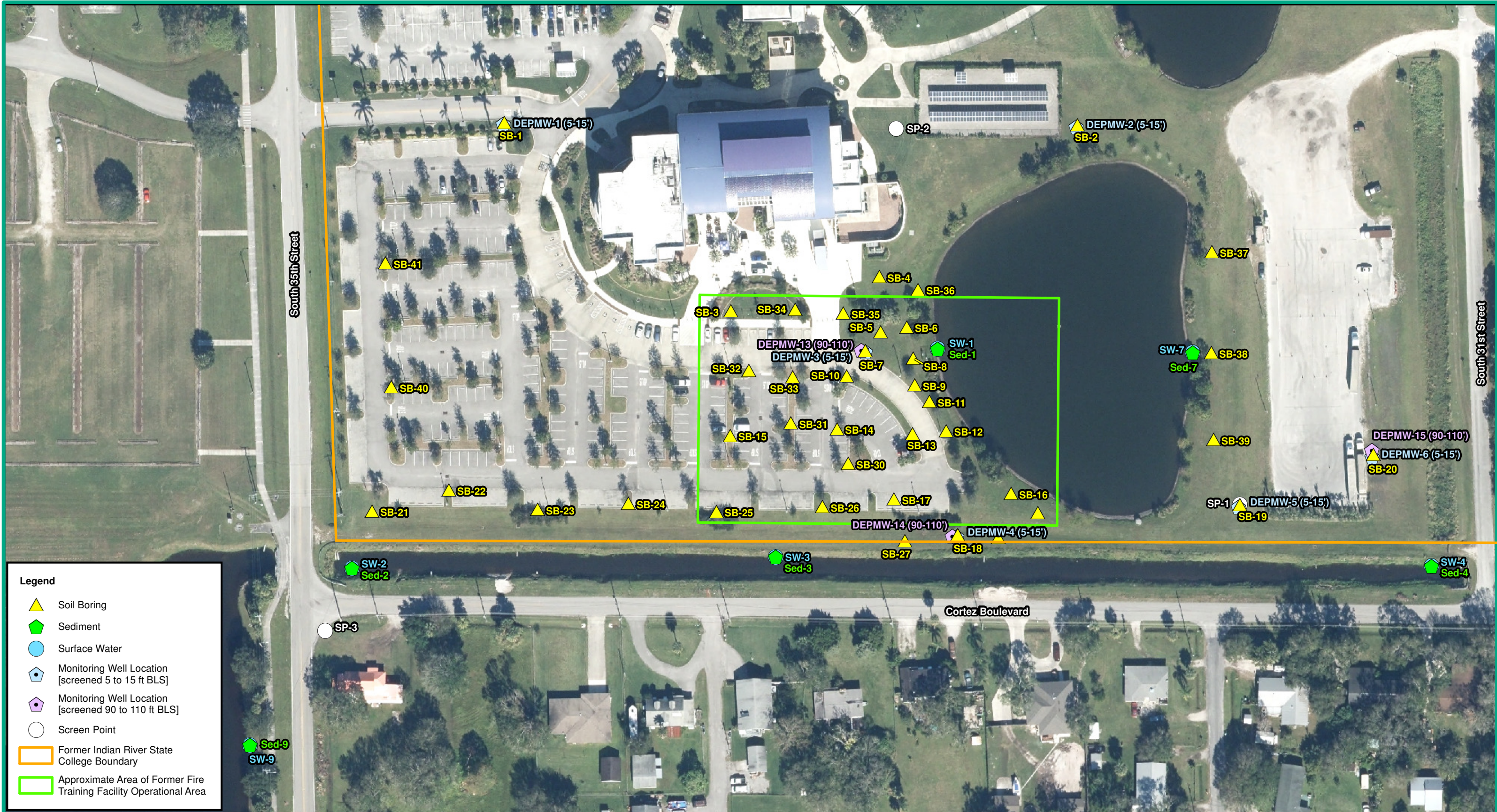


**Figure 6**  
**Groundwater Elevation Contour Map 80 to 110 ft BLS**  
**December 2020**  
**Former Indian River State College**  
**Fort Pierce, St. Lucie County, Florida**

- Notes:**
1. NAVD88 indicates North American Vertical Datum of 1988.
  2. ft BLS indicates feet below land surface.
  3. Depth-to-water measurements were collected 8 December 2020.
  4. Approximate Indian River State College Boundary obtained from St. Lucie County Property Appraiser (file downloaded 6 February 2020).
  5. Source of 2017 aerial: Florida Department of Transportation Aerial Photo Look Up System website.



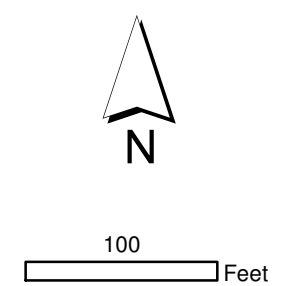
Date: January 28, 2021

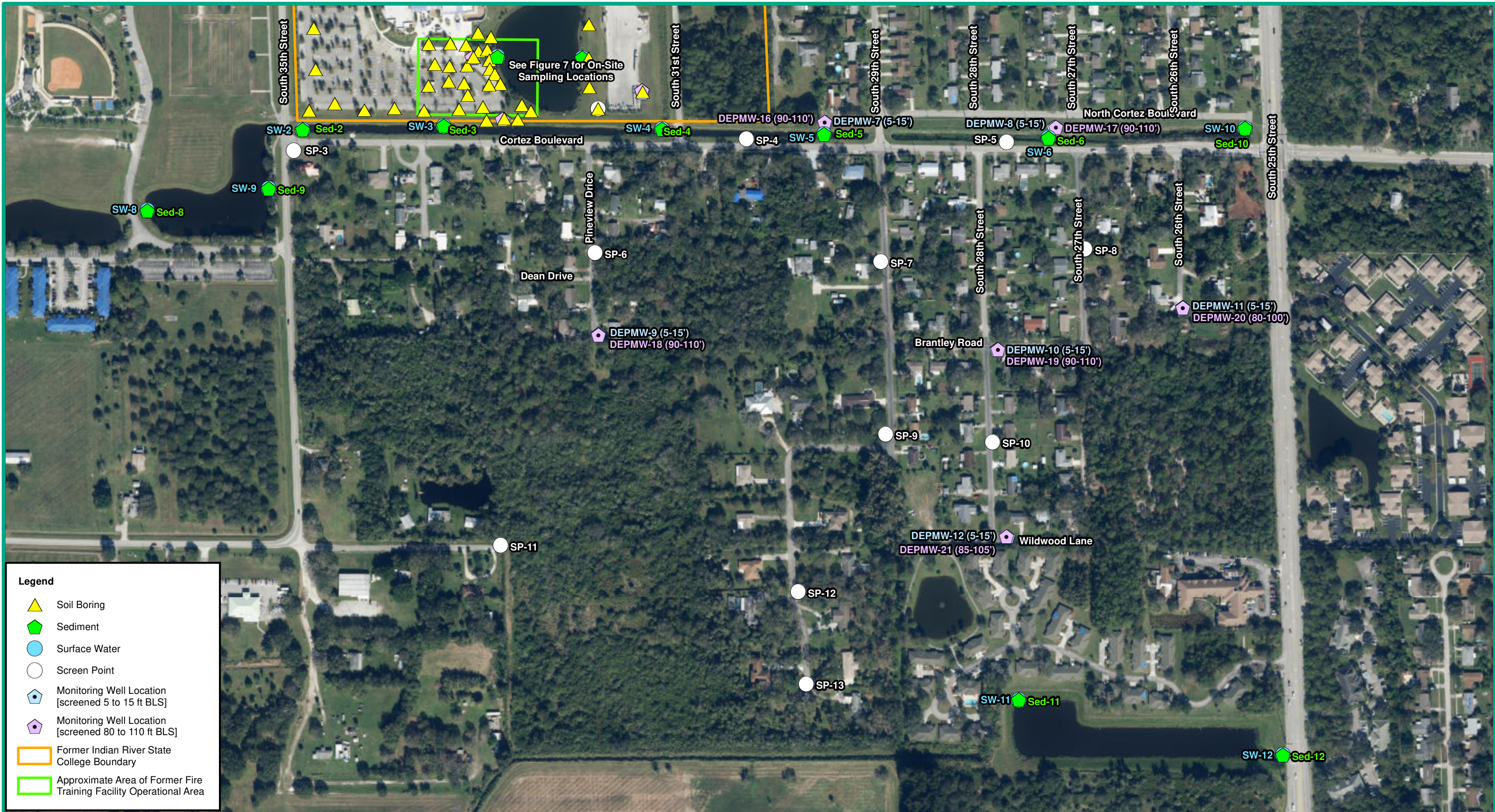


**Figure 7**  
**On-Site Sampling Locations**  
**Former Indian River State College**  
**Fort Pierce, St. Lucie County, Florida**

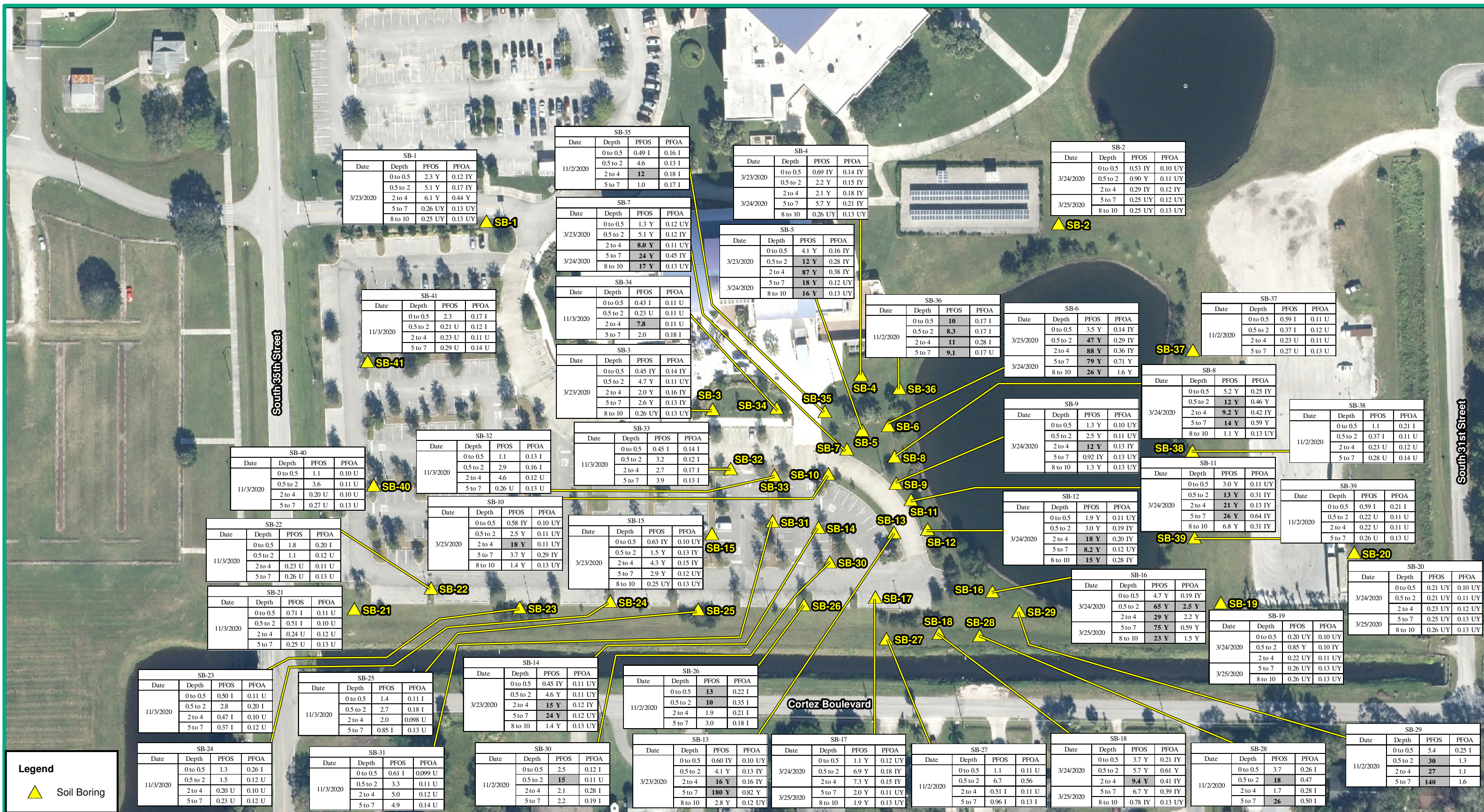
**Notes:**  
 1. ft BLS indicates feet below land surface.  
 2. Approximate Indian River State College Boundary obtained from St. Lucie County Property Appraiser (file downloaded 6 February 2020).  
 3. Source of 2017 aerial: Florida Department of Transportation Aerial Photo Look Up System website.

Date: February 23, 2021





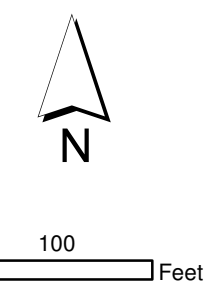
**Figure 8**  
**Off-Site Sampling Locations**  
**Former Indian River State College**  
**Fort Pierce, St. Lucie County, Florida**



**Figure 9**  
**Summary of Analytical Results in Soil**  
**Former Indian River State College**  
**Fort Pierce, St. Lucie County, Florida**

- Notes:**
1. Results and screening criteria are presented in micrograms per kilogram ( $\mu\text{g}/\text{kg}$ ).
  2. I indicates result is between the laboratory method detection limit (MDL) and the laboratory practical quantitation limit.
  3. U indicates that the compound was analyzed for but not detected (the MDL is shown).
  4. Y indicates the laboratory analysis was from an unpreserved or improperly preserved sample.
  5. Depth is presented in feet (ft) below land surface (BLS).
  6. Gray shaded, bold text indicates an exceedance of the Florida Department of Environmental Protection provisional leachability soil cleanup target level (SCTL).
  7. Approximate Indian River State College Boundary obtained from St. Lucie County Property Appraiser (file downloaded 6 February 2020).
  8. Source of 2017 aerial: Florida Department of Transportation Aerial Photo Look Up System website.

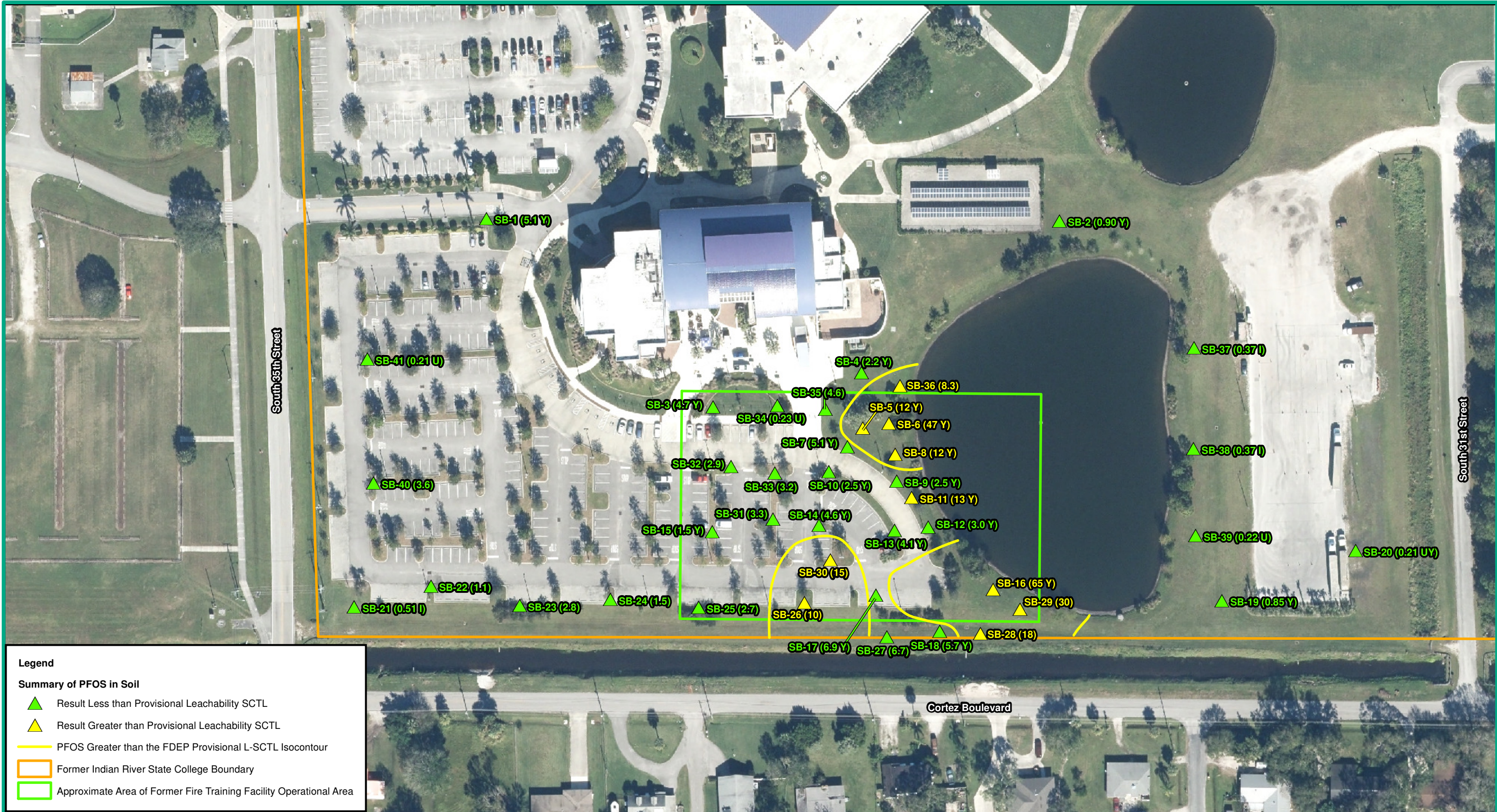
Provisional Cleanup Target Level	Perfluorooctanesulfonic acid (PFOS)	Perfluorooctanoic acid (PFOA)
Leachability SCTL	7	2
Residential SCTL	1300	1300
Industrial SCTL	25000	25000



Date: January 28, 2021







**Figure 11**  
**PFOS Results in Soil from 0.5 to 2 ft BLS**  
**Former Indian River State College**  
**Fort Pierce, St. Lucie County, Florida**

**Notes:**

1. Results and screening criteria are presented in micrograms per kilogram ( $\mu\text{g}/\text{Kg}$ ).
2. U indicates that the compound was analyzed for but not detected (the method detection limit is shown).
3. Y indicates the laboratory analysis was from an unpreserved or improperly preserved sample.
4. ft BLS indicates feet below land surface.
5. Approximate Indian River State College Boundary obtained from St. Lucie County Property Appraiser (file downloaded 6 February 2020).
6. Source of 2017 aerial: Florida Department of Transportation Aerial Photo Look Up System website.

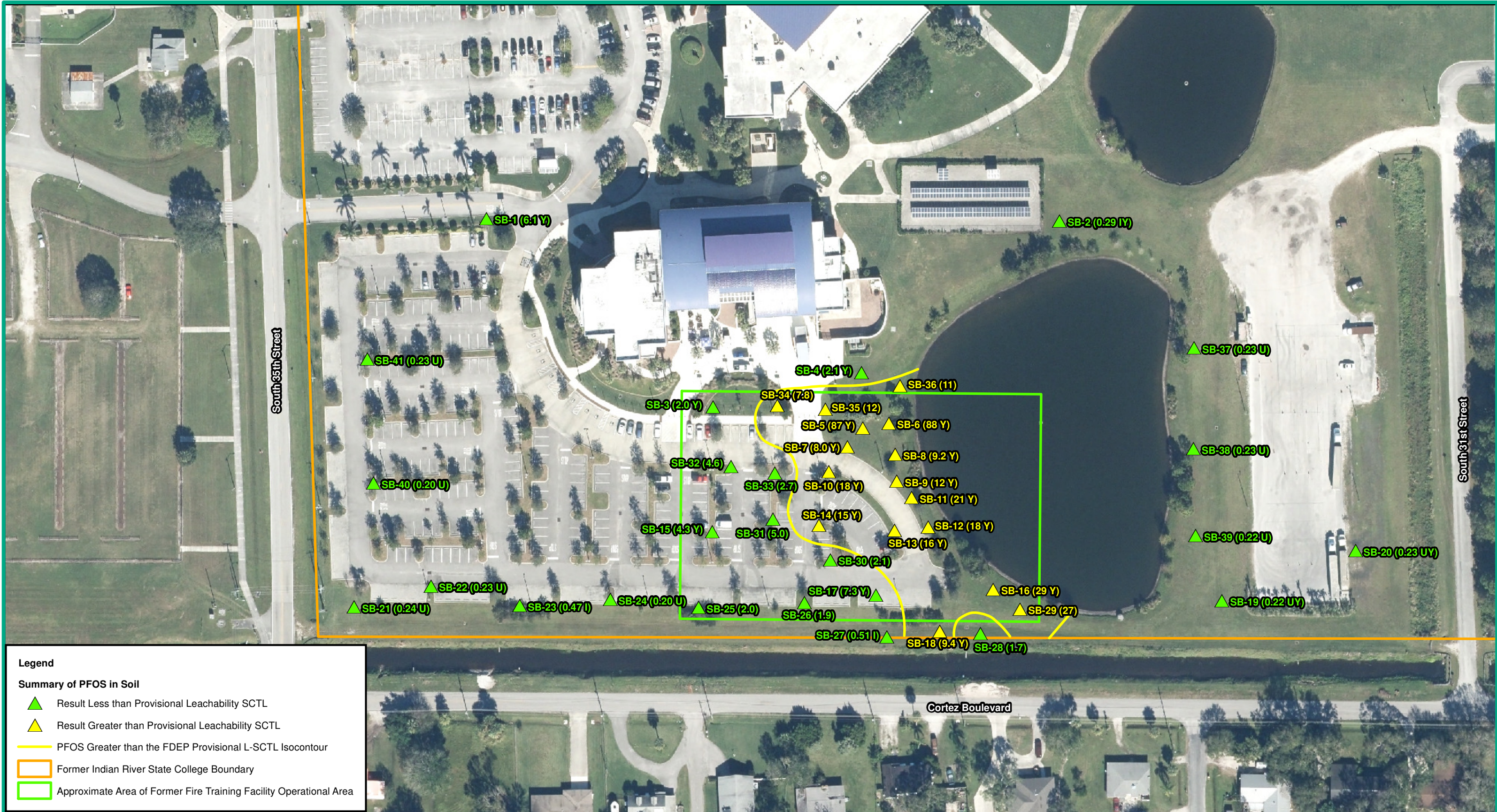
Provisional Cleanup Target Level	Perfluorooctanesulfonic acid (PFOS)
Leachability SCTL	7
Residential SCTL	1,300
Industrial SCTL	25,000



100 Feet



Date: February 02, 2021



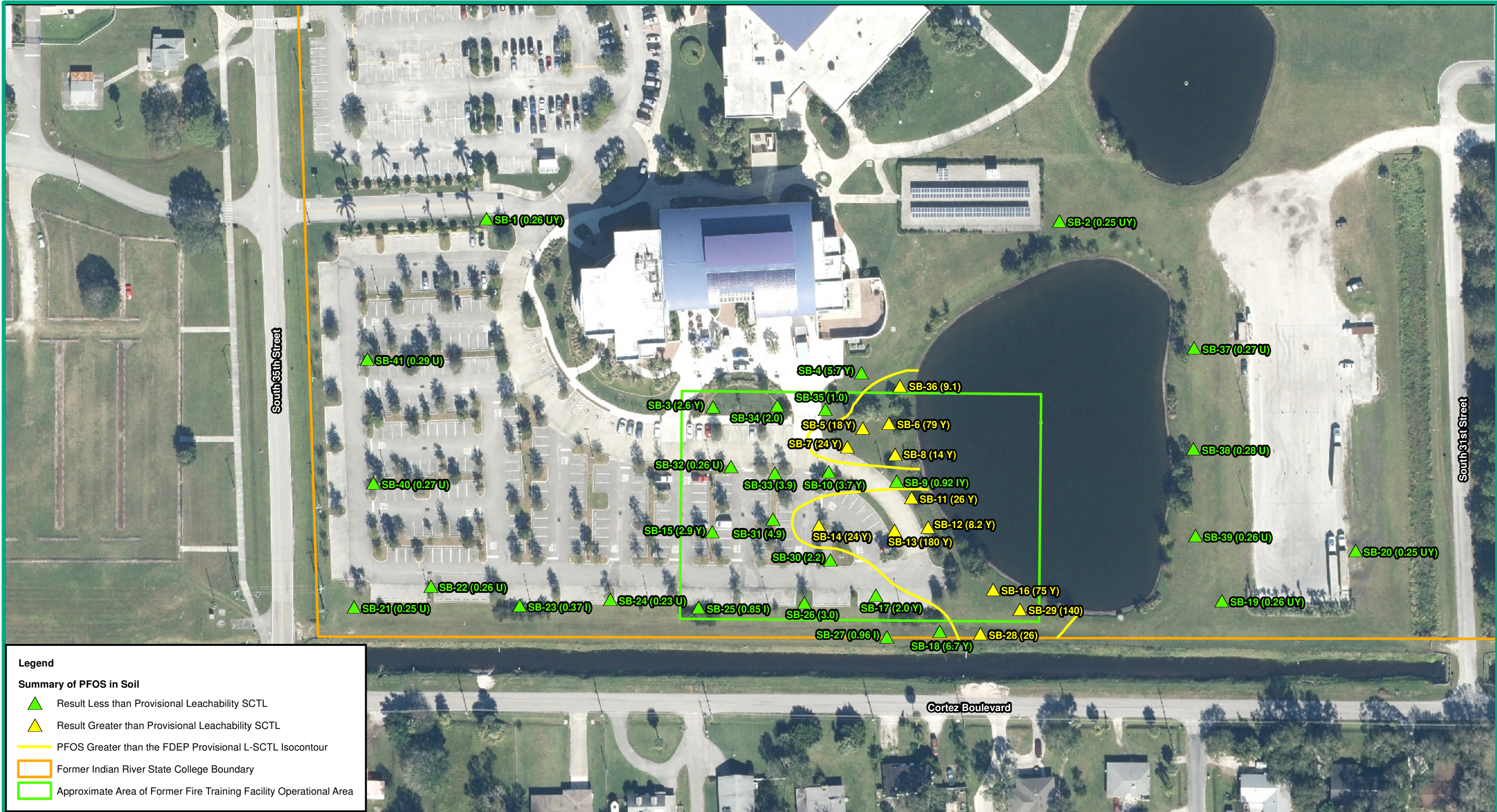
**Figure 12**  
**PFOS Results in Soil from 2 to 4 ft BLS**  
**Former Indian River State College**  
**Fort Pierce, St. Lucie County, Florida**

**Notes:**

1. Results and screening criteria are presented in micrograms per kilogram ( $\mu\text{g}/\text{Kg}$ ).
2. I indicates result is between the laboratory method detection limit (MDL) and the laboratory practical quantitation limit.
3. U indicates that the compound was analyzed for but not detected (the MDL is shown).
4. Y indicates the laboratory analysis was from an unpreserved or improperly preserved sample.
5. ft BLS indicates feet below land surface.
6. Approximate Indian River State College Boundary obtained from St. Lucie County Property Appraiser (file downloaded 6 February 2020).
7. Source of 2017 aerial: Florida Department of Transportation Aerial Photo Look Up System website.

Date: February 02, 2021





**Legend**

**Summary of PFOS in Soil**

- ▲ Result Less than Provisional Leachability SCTL
- ▲ Result Greater than Provisional Leachability SCTL
- PFOS Greater than the FDEP Provisional L-SCTL Isocontour
- Former Indian River State College Boundary
- Approximate Area of Former Fire Training Facility Operational Area

**Figure 13**  
**PFOS Results in Soil from 5 to 7 ft BLS**  
**Former Indian River State College**  
**Fort Pierce, St. Lucie County, Florida**

- Notes:**
1. Results and screening criteria are presented in micrograms per kilogram (µg/Kg).
  2. I indicates result is between the laboratory method detection limit (MDL) and the laboratory practical quantitation limit.
  3. U indicates that the compound was analyzed for but not detected (the MDL is shown).
  4. Y indicates the laboratory analysis was from an unpreserved or improperly preserved sample.
  5. ft BLS indicates feet below land surface.
  6. Approximate Indian River State College Boundary obtained from St. Lucie County Property Appraiser (file downloaded 6 February 2020).
  7. Source of 2017 aerial: Florida Department of Transportation Aerial Photo Look Up System website.

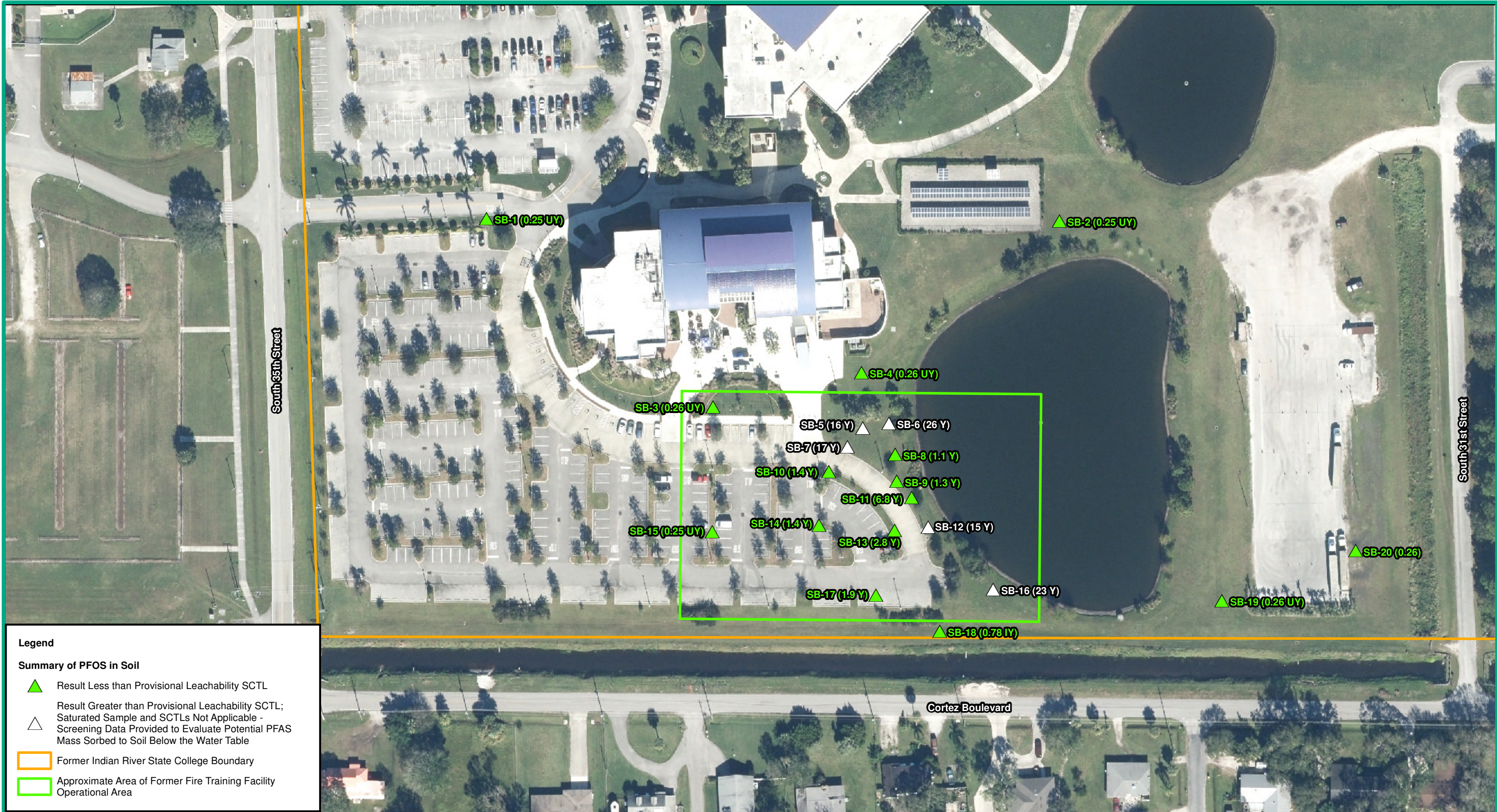
Provisional Cleanup Target Level	Perfluorooctanesulfonic acid (PFOS)
Leachability SCTL	7
Residential SCTL	1,300
Industrial SCTL	25,000

N

100 Feet



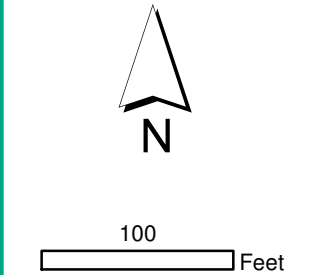
Date: February 02, 2021



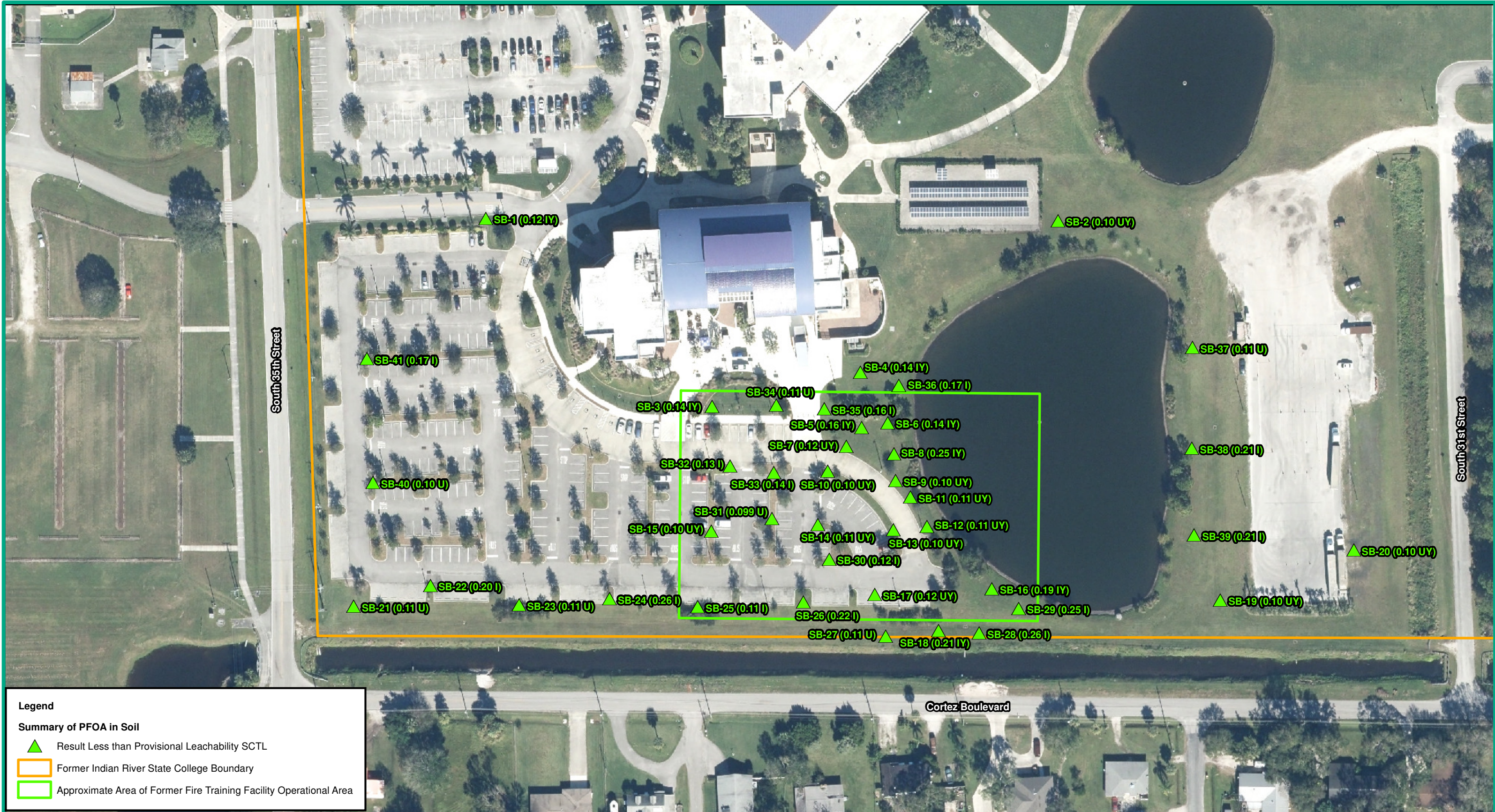
**Figure 14**  
**PFOS Results in Soil from 8 to 10 ft BLS**  
**Former Indian River State College**  
**Fort Pierce, St. Lucie County, Florida**

- Notes:**
1. Results and screening criteria are presented in micrograms per kilogram ( $\mu\text{g}/\text{Kg}$ ).
  2. I indicates result is between the laboratory method detection limit (MDL) and the laboratory practical quantitation limit.
  3. U indicates that the compound was analyzed for but not detected (the MDL is shown).
  4. Y indicates the laboratory analysis was from an unpreserved or improperly preserved sample.
  5. ft BLS indicates feet below land surface.
  6. Approximate Indian River State College Boundary obtained from St. Lucie County Property Appraiser (file downloaded 6 February 2020).
  7. Source of 2017 aerial: Florida Department of Transportation Aerial Photo Look Up System website.

Provisional Cleanup Target Level	Perfluorooctanesulfonic acid (PFOS)
Leachability SCTL	7
Residential SCTL	1,300
Industrial SCTL	25,000



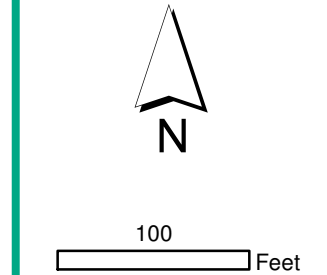
Date: February 02, 2021



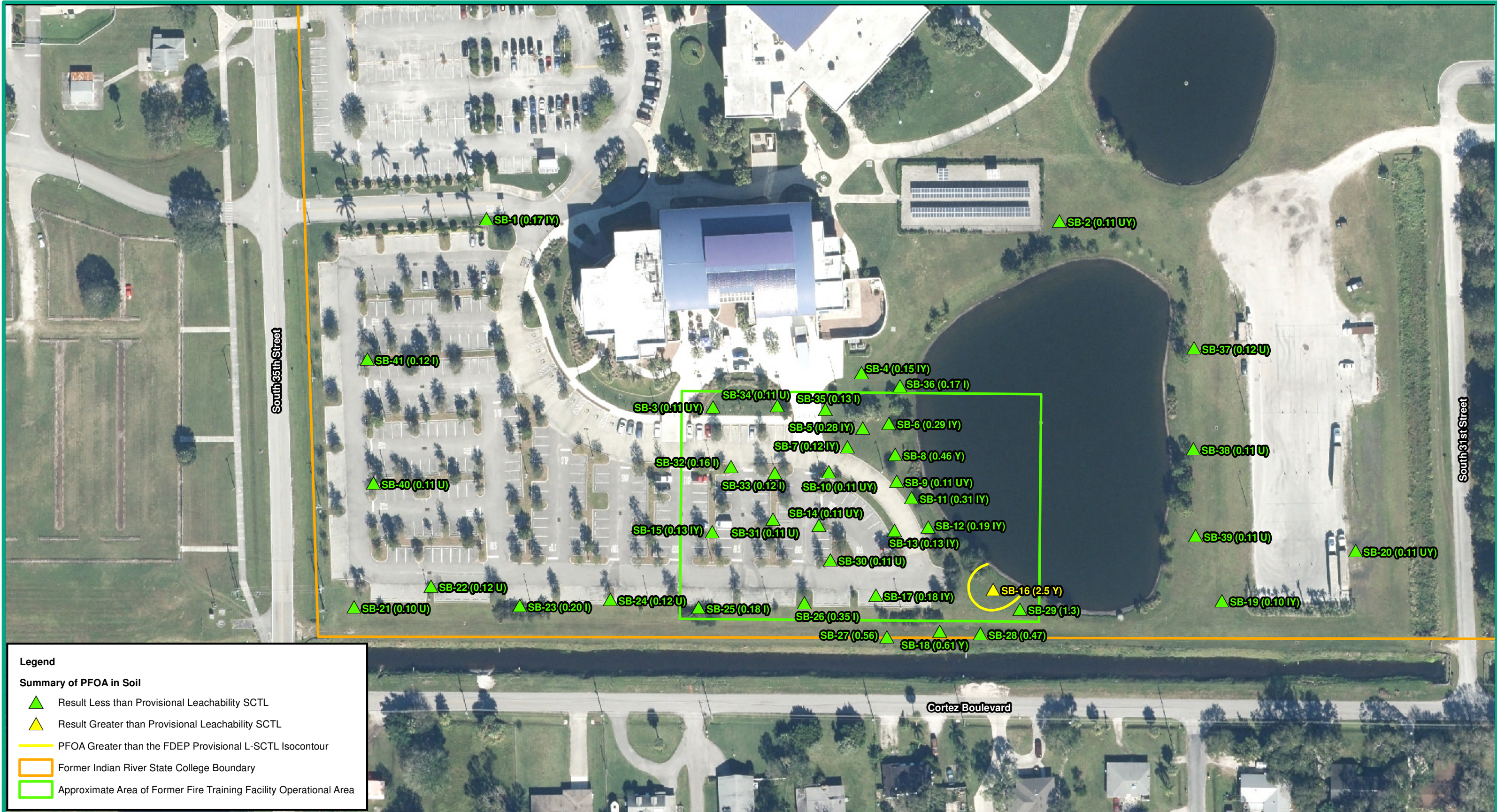
**Figure 15**  
**PFOA Results in Soil from 0 to 0.5 ft BLS**  
**Former Indian River State College**  
**Fort Pierce, St. Lucie County, Florida**

- Notes:**
1. Results and screening criteria are presented in micrograms per kilogram (µg/Kg).
  2. I indicates result is between the laboratory method detection limit (MDL) and the laboratory practical quantitation limit.
  3. U indicates that the compound was analyzed for but not detected (the MDL is shown).
  4. Y indicates the laboratory analysis was from an unpreserved or improperly preserved sample.
  5. ft BLS indicates feet below land surface.
  6. Approximate Indian River State College Boundary obtained from St. Lucie County Property Appraiser (file downloaded 6 February 2020).
  7. Source of 2017 aerial: Florida Department of Transportation Aerial Photo Look Up System website.

Provisional Cleanup Target Level	Perfluorooctanoic acid (PFOA)
Leachability SCTL	2
Residential SCTL	1,300
Industrial SCTL	25,000



Date: February 02, 2021



**Legend**

**Summary of PFOA in Soil**

- ▲ Result Less than Provisional Leachability SCTL
- ▲ Result Greater than Provisional Leachability SCTL
- PFOA Greater than the FDEP Provisional L-SCTL Isocontour
- Former Indian River State College Boundary
- Approximate Area of Former Fire Training Facility Operational Area

**Figure 16**  
**PFOA Results in Soil from 0.5 to 2 ft BLS**  
**Former Indian River State College**  
**Fort Pierce, St. Lucie County, Florida**

- Notes:**
1. Results and screening criteria are presented in micrograms per kilogram ( $\mu\text{g}/\text{Kg}$ ).
  2. I indicates result is between the laboratory method detection limit (MDL) and the laboratory practical quantitation limit.
  3. U indicates that the compound was analyzed for but not detected (the MDL is shown).
  4. Y indicates the laboratory analysis was from an unpreserved or improperly preserved sample.
  5. ft BLS indicates feet below land surface.
  6. Approximate Indian River State College Boundary obtained from St. Lucie County Property Appraiser (file downloaded 6 February 2020).
  7. Source of 2017 aerial: Florida Department of Transportation Aerial Photo Look Up System website.

Provisional Cleanup Target Level	Perfluorooctanoic acid (PFOA)
Leachability SCTL	2
Residential SCTL	1,300
Industrial SCTL	25,000

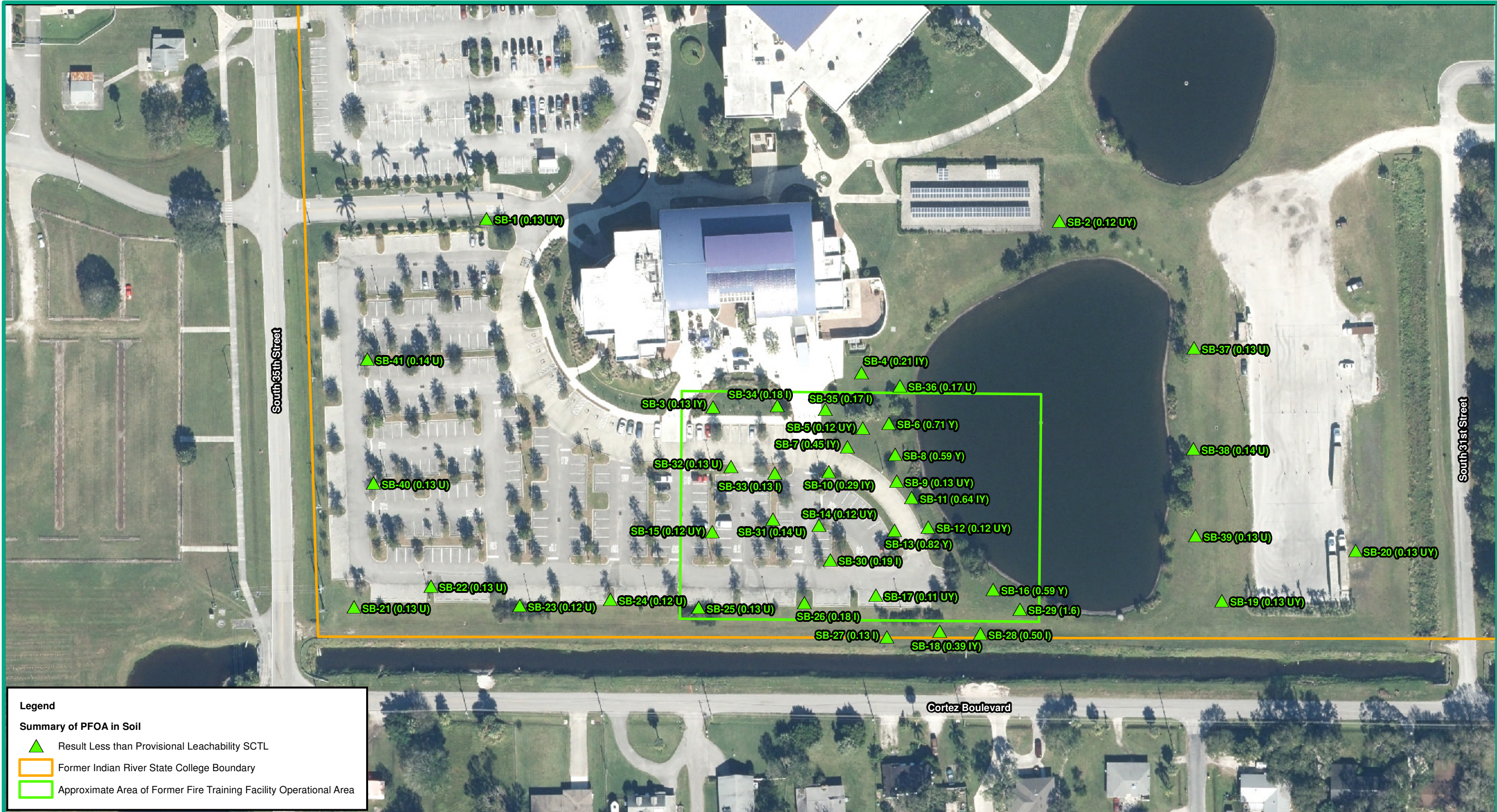
N

100 Feet

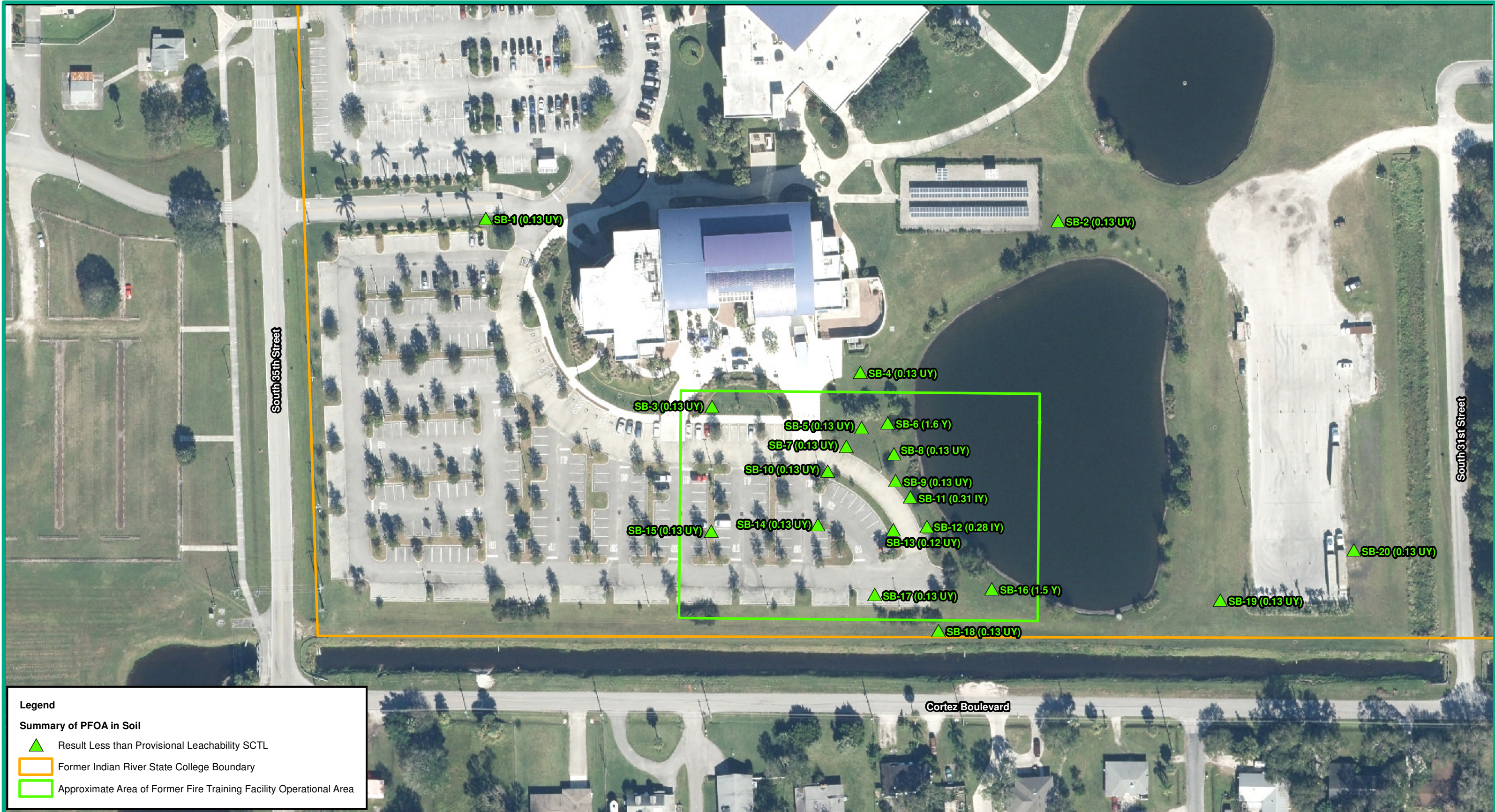


Date: February 02, 2021







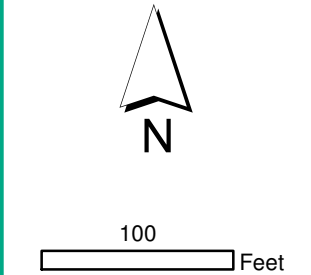


**Figure 19**  
**PFOA Results in Soil from 8 to 10 ft BLS**  
**Former Indian River State College**  
**Fort Pierce, St. Lucie County, Florida**

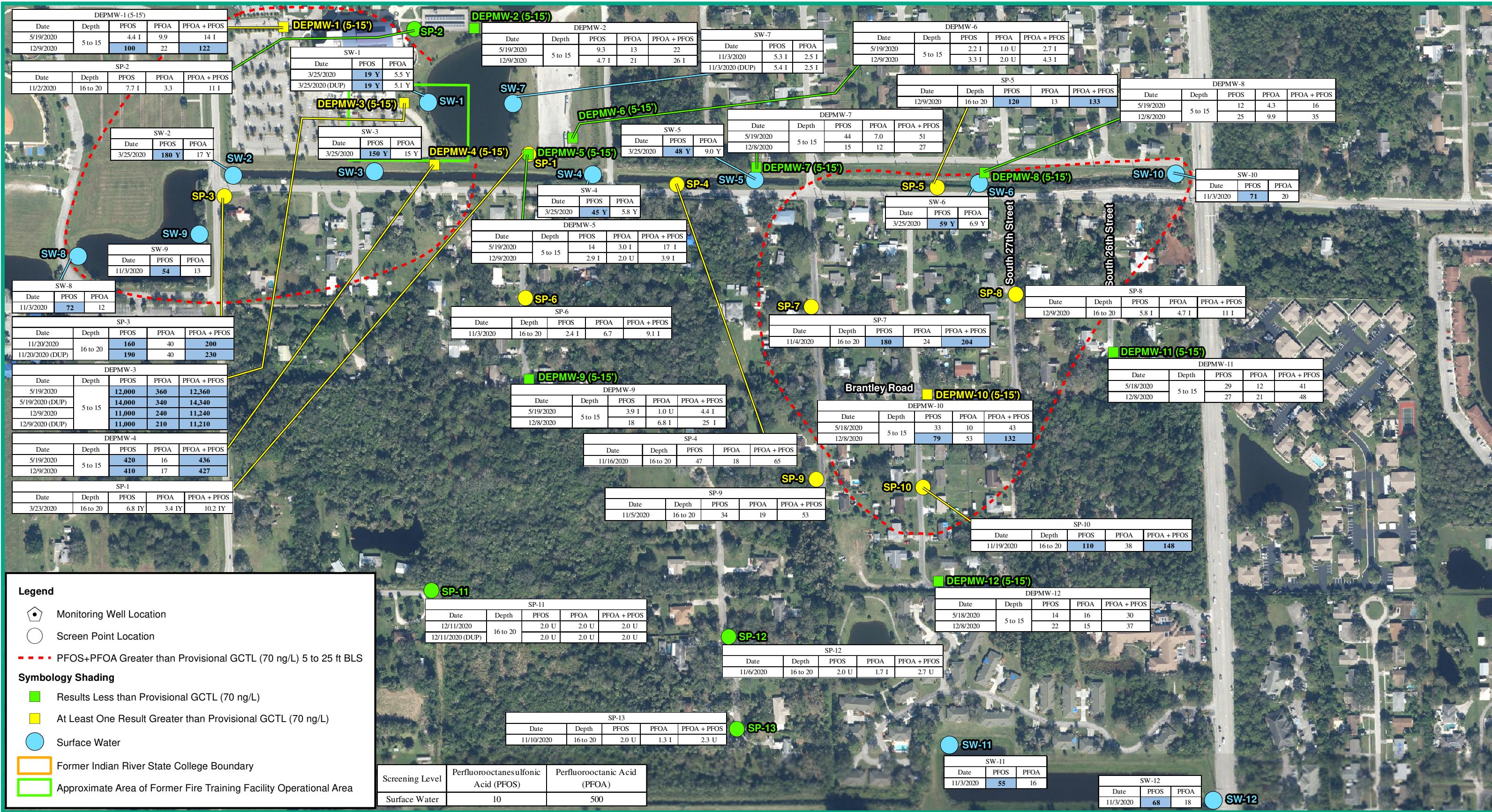
**Notes:**

1. Results and screening criteria are presented in micrograms per kilogram ( $\mu\text{g}/\text{Kg}$ ).
2. I indicates result is between the laboratory method detection limit (MDL) and the laboratory practical quantitation limit.
3. U indicates that the compound was analyzed for but not detected (the MDL is shown).
4. Y indicates the laboratory analysis was from an unpreserved or improperly preserved sample.
5. ft BLS indicates feet below land surface.
6. Approximate Indian River State College Boundary obtained from St. Lucie County Property Appraiser (file downloaded 6 February 2020).
7. Source of 2017 aerial: Florida Department of Transportation Aerial Photo Look Up System website.

Provisional Cleanup Target Level	Perfluorooctanoic acid (PFOA)
Leachability SCTL	2
Residential SCTL	1,300
Industrial SCTL	25,000

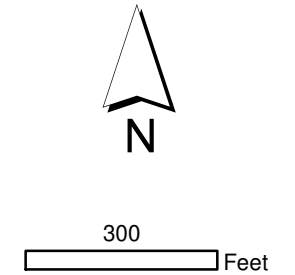


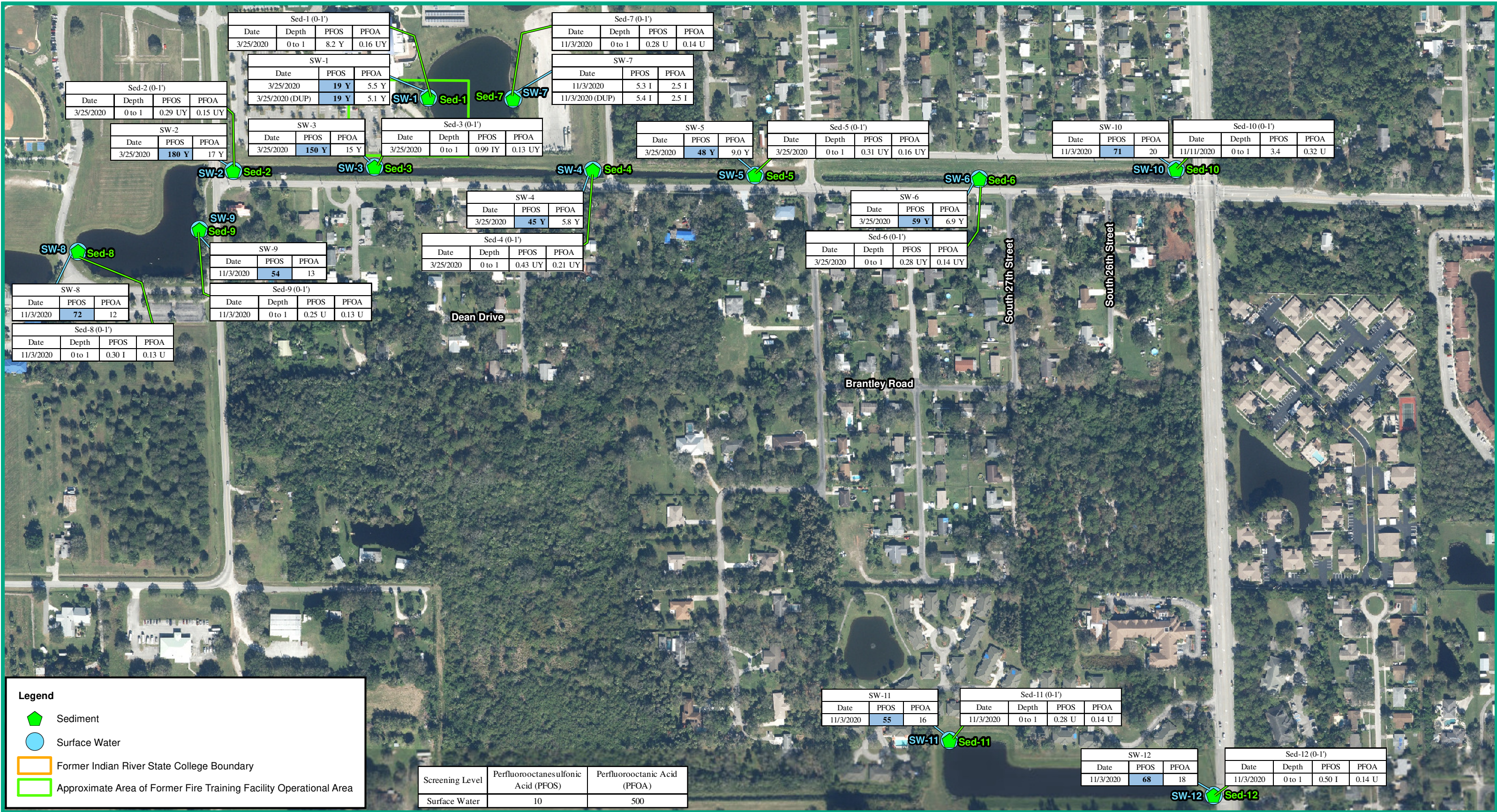
Date: February 02, 2021



**Figure 20**  
**Summary of Analytical Results in Surface Water and Groundwater from 5 to 25 ft BLS**  
**Former Indian River State College**  
**Fort Pierce, St. Lucie County, Florida**

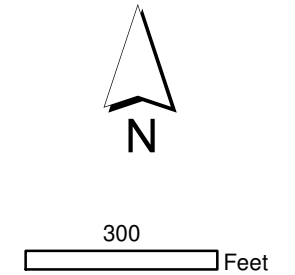
Date: February 04, 2021

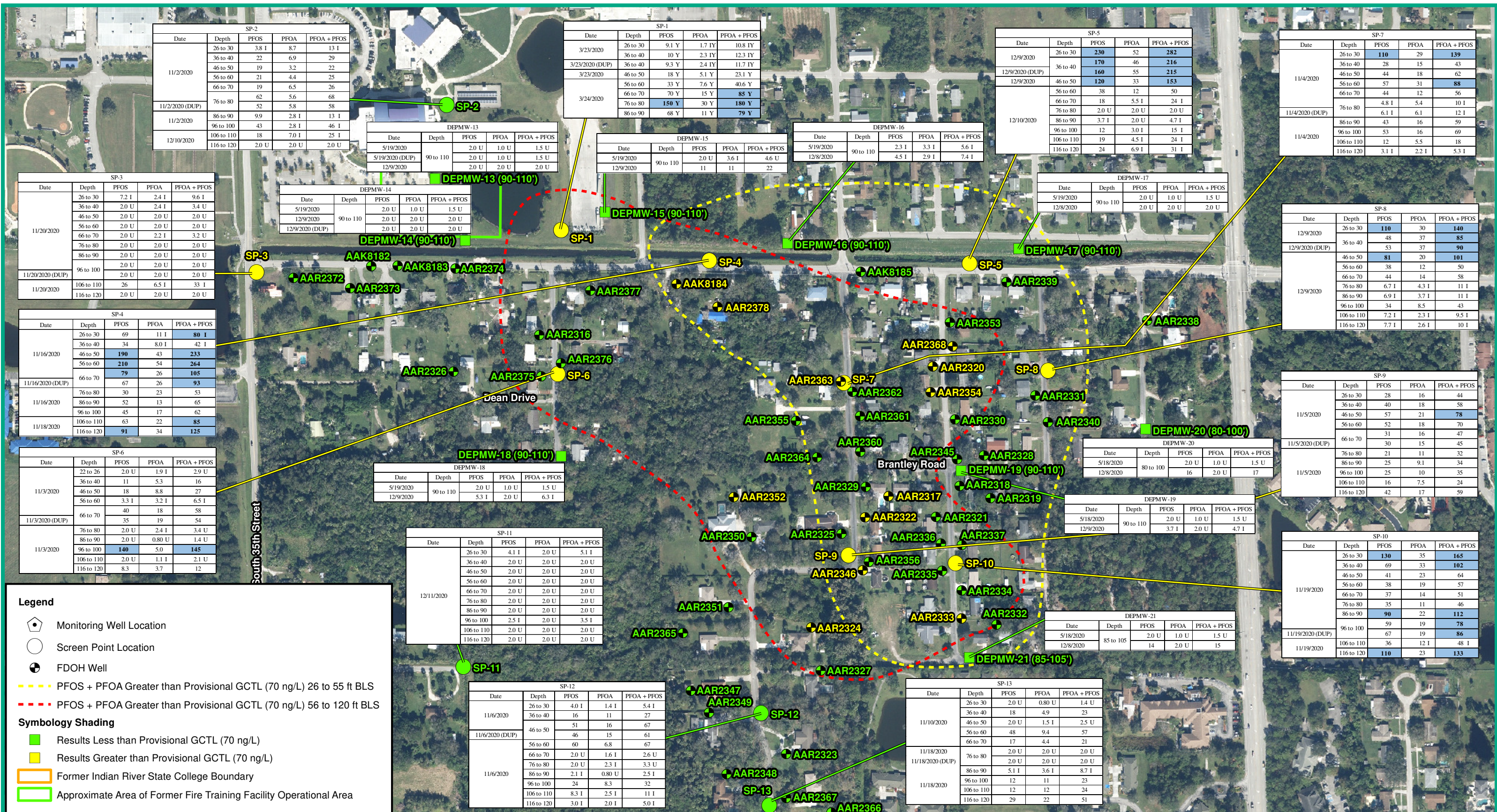




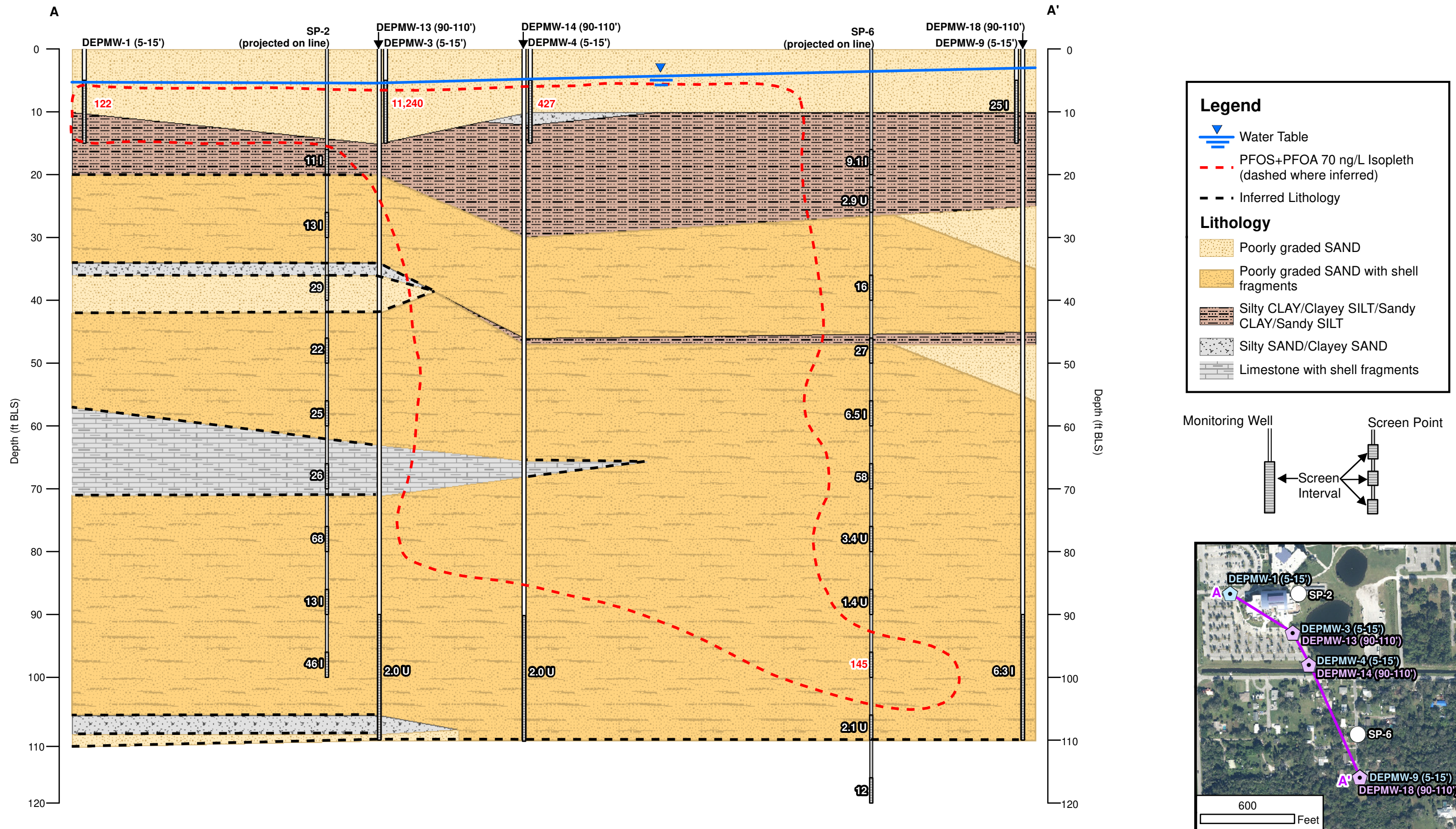
**Figure 21**  
**Summary of Analytical Results in Sediment and Surface Water**  
**Former Indian River State College**  
**Fort Pierce, St. Lucie County, Florida**

Date: February 04, 2021





**Figure 22**  
**Summary of Analytical Results in Groundwater**  
**from 26 to to 120 ft BLS**  
**Former Indian River State College**  
**Fort Pierce, St. Lucie County, Florida**



**Figure 23**  
**Vertical Extent of PFOS and PFOA**  
**in Groundwater from A-A'**  
**Former Indian River State College**  
**Fort Pierce, St. Lucie County, Florida**

- Notes:**
1. ft BLS indicates feet below land surface.
  2. Results are provided in nanograms per liter (ng/L).
  3. Analytical results are shown for the summation of perfluorooctanesulfonic acid (PFOS) and perfluorooctanoic acid (PFOA).
  4. I indicates result is between the laboratory method detection limit and the laboratory practical quantitation limit.
  5. U indicates that the compound was analyzed for but not detected (the laboratory MDL is shown).
  6. The Florida Department of Environmental Protection provisional groundwater cleanup target level (GCTL) for the summation of PFOS and PFOA is 70 ng/L.
  7. Contours were generated using the summation concentration of PFOS + PFOA. The highest concentration between a sample and its duplicate was utilized.
  8. Red text indicates result is greater than the PFOS+PFOA provisional GCTL.
  9. Source of 2017 aerial: Florida Department of Transportation Aerial Photo Look Up System website

Date: February 04, 2021 Vertical Exaggeration = 10