

# Lochloosa Wildlife

Substantially Complete

Alachua County

<i>Year Added to Priority List</i>	<i>1994</i>
<i>Project Acres</i>	<i>37,773</i>
<i>Acquired Acres</i>	<i>33,824</i>
<i>Cost of Acquired Acres</i>	<i>\$11,379,952</i>
<i>Remaining Project Acres</i>	<i>3,949</i>
<i>2021 Assessed Value of Remaining Acres</i>	<i>\$7,481,592</i>

## Purpose for State Acquisition

The Lochloosa Wildlife project will conserve the large lakes, flatwoods and prairies in southeast Alachua County to protect habitat for many wildlife species such as Florida black bear, osprey and wood storks and maintain the water quality found in these critical wetland habitats. The project will protect forested lands that link Newnan's Lake, Lochloosa Lake, Orange Lake and Paynes Prairie and provide a scenic natural area for boating, fishing, hiking and hunting.

## General Description

The project encompasses significant resources associated with Lochloosa Lake (particularly large populations of birds of prey), a bird rookery used by wood storks and possibly the largest intact mesic flatwoods remaining in Alachua County. Tracts in intensive timber production account for more than half the project acreage. Magnesia Springs supports the only known population in the world of the freemouth hydrophobe snail. Nineteen other rare or endangered species are known to occur on-site, including wood stork, Florida sandhill crane and Florida black bear. The good quality surface waters in the project are a significant hydrological resource and the project will also buffer several Outstanding Florida Waters in the vicinity.



FNAI Element Occurrence Summary

<u>FNAI Elements</u>	<u>Score</u>
Florida black bear	G5T4/S4
Striped newt	G2G3/S2
Eastern indigo snake	G3/S2?
Gopher tortoise	G3/S3
Wood stork	G4/S2
Osprey	G5/S3S4
Freemouth hydrobe snail	G1/S1
Florida sandhill crane	G5T2/S2
<i>many-flowered grass-pink</i>	G2G3/S2S3
Gopher frog	G2G3/S3
Blackbanded sunfish	G3G4/S1S3
Mud sunfish	G4G5/S3

Public Use

The project would be designated as a wildlife management area.

Acquisition Planning

**1995**

On December 28, 1995, the St. Johns River Water Management District established the Georgia Pacific-Lochloosa (16,650 acres) conservation easement, of which 14,844 acres are within the project boundary.

**2009**

On December 15, 2009, Alachua County acquired the Roberts parcel (323.49 acres) in Phifer Flatwoods Preserve with the help of The Nature Conservancy.

**2011**

Essential tracts within this project include Georgia Pacific (the St. Johns River Water Management District has acquired a conservation easement over 10,300 acres surrounding Lake Lochloosa), Franklin Crates, Concora (Container Corp./Wachovia), Goethe and Brown.

On December 9, 2011, this project was placed in the Substantially Complete list of Florida Forever projects.

Coordination

The St. Johns River Water Management District is an acquisition partner.

Management Policy Statement

The primary goals of management of the Lochloosa Wildlife project are to conserve and protect significant habitat for native species or endangered and threatened species; to conserve, protect, manage or restore important ecosystems, landscapes and forests, in order to enhance or protect significant surface water, coastal, recreational, timber, fish or wildlife resources which local or state regulatory programs cannot adequately protect; to provide areas, including recreational trails, for natural-resource- based recreation; and to preserve significant archaeological or historical sites.





### **Manager(s)**

The Florida Fish and Wildlife Conservation Commission will be the manager.

### **Management Prospectus**

#### **Conditions Affecting Intensity of Management**

The Lochloosa Wildlife project is an area in imminent danger of development and in high need of intense resource management and protection. The large pine plantations will require restoration.

#### **Management Implementation, Public Access, Site Security and Protection of Infrastructure**

Within the first year after acquisition, management will concentrate on site security, natural resource management and conceptual planning. Public-use facilities will be developed in succeeding years.

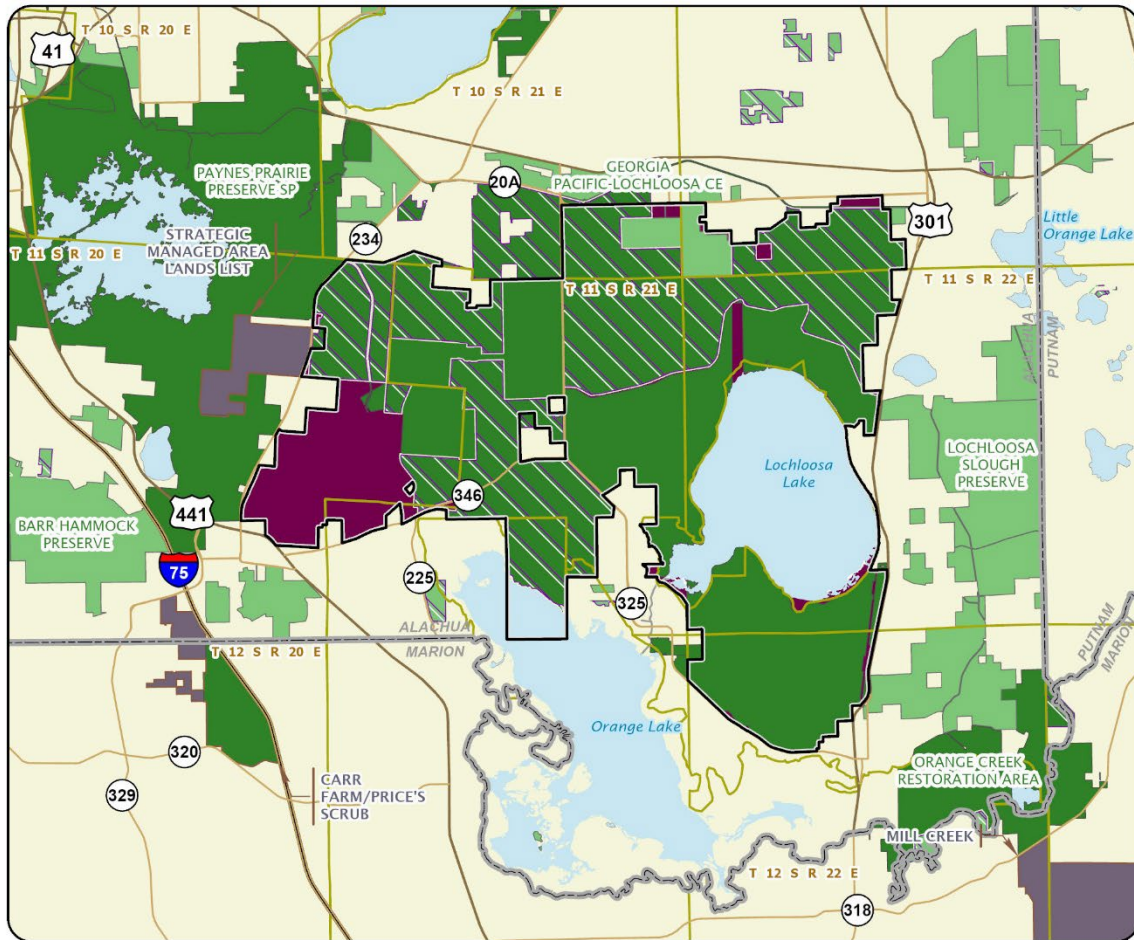
#### **Revenue-generating Potential**

No significant revenue is expected to be generated initially. As public use is increased, modest revenue may be generated.

#### **Cooperators in Management Activities**

The Florida Forest Service is recommended as a cooperator to assist with forest management.





### LOCHLOOSA WILDLIFE

#### ALACHUA COUNTY

- Florida Forever Project Boundary
- Essential Parcels Remaining
- Other Florida Forever Projects
- State Conservation Lands
- Other Conservation Lands
- Less-Than-Fee Acquisition

