

# Pumpkin Hill Creek

Partnerships and Regional Incentives

Duval County

<i>Year Added to Priority List</i>	1994
<i>Project Acres</i>	24,757
<i>Acquired Acres</i>	18,049
<i>Cost of Acquired Acres</i>	\$15,668,766
<i>Remaining Project Acres</i>	6,708
<i>2021 Assessed Value of Remaining Acres</i>	\$209,972,160

## Purpose for State Acquisition

The Pumpkin Hill Creek project will protect one of the larger areas of natural uplands left in Duval County and will enhance water quality and protection for the Nassau and St. Johns Rivers. The project will support the foundation of an important fishery, protect wading bird rookeries, and provide the public with opportunities for resource-based recreation such as fishing, hunting, hiking and canoeing.

## General Description

As a remnant of relatively intact natural communities in the urban landscape of Duval County, the Pumpkin Hill Creek project will protect upland buffers to the Nassau River-St. Johns River Marshes Aquatic Preserve. The Aquatic Preserve (an Outstanding Florida Water) supports a significant commercial and recreational fishery. Besides sandhill, scrubby flatwoods, wet flatwoods and salt marsh, the project contains high quality maritime hammock. It also provides habitat for several rare species and contains two colonial wading bird rookeries, one of which is used by the federally endangered wood stork. Manatees frequent both the St. Johns and Nassau Rivers and move into tidal creeks (such as Hill Creek and Clapboard Creek) adjacent to the project. The cultural resource value of the project is high, as the project contains 14 archaeological sites (including the ruins of the early 19th century Fitzpatrick Plantation house).



FNAI Element Occurrence Summary

<b><u>FNAI Elements</u></b>	<b><u>Score</u></b>
Striped newt	G2G3/S2
Piping plover	G3/S2
Gopher tortoise	G3/S3
Bird Rookery	G5/SNRB
<i>pondspice</i>	G3?/S2
Worthington's marsh wren	G5T3/S2
Macgillivray's seaside sparrow	G4T3/S2
Wood stork	G4/S2
Roseate spoonbill	G5/S2
Atlantic salt marsh mink	G5T3/S3
Least tern	G4/S3
Bald eagle	G5/S3

**Public Use**

This project is designated as a buffer preserve.

**Acquisition Planning**

**1983**

In 1983, Duval Audubon Society acquired Cedar Point Sanctuary (7.69 acres).

**1993**

On December 9, 1993, the Land Acquisition Advisory Council added Pumpkin Hill Creek to the Conservation and Recreational Lands Priority List. This fee-simple acquisition (sponsored by the City of Jacksonville and the St. Johns River Water Management District) is approximately 6,292 acres consisting of 25 parcels, 12 owners and a taxable value of \$9,383,700. Essential parcels included North Shore (acquired by The Nature Conservancy using Cedar Bay Cogeneration Project mitigation funds), Verdie Forest and Penland (acquired jointly with the St. Johns River Water Management District), and Tison and Birchfield (acquired by the St. Johns River Water Management District).

**1996**

On May 2, 1996, City of Jacksonville acquired 352 acres to create Cedar Point Preserve.

**1997**

On March 14, 1997, the Land Acquisition Advisory Council approved a fee-simple, 635-acre addition (Sample Swamp property) to the project boundary. It was sponsored by the City of Jacksonville and consisted of multiple owners, parcels and a taxable value of \$995,638.

**1998**

On October 15, 1998, the Land Acquisition and Management Advisory Council designated an additional 1,419 acres as essential including Sample Swamp, City National, Beasley, Wingate and two small connecting parcels.





## **2000**

On October 17, 2000, the Acquisition and Restoration Council approved a fee-simple, 18,995-acre addition to the project boundary. The addition, sponsored by the City of Jacksonville, The Nature Conservancy and DEP's Office of Resilience and Coastal Protection, consisted of 93 owners, 176 parcels and a taxable value of \$7,624,669.

## **2002**

On December 13, 2002, the North Florida Land Trust acquired Pescatello Island (25.12 acres).

On December 27, 2002, Timucuan Trails Parks Foundation (formerly Preservation North Florida, Inc.) acquired Starratt Road (207.1 acres).

## **2003**

On January 6, 2003, Duval County/City of Jacksonville acquired Betz Tiger Point Preserve (548 acres), of which 517 acres are within the project boundary.

On February 7, 2003, the Acquisition and Restoration Council approved a fee-simple, 73-acre addition to the project boundary. It was sponsored by The Nature Conservancy and consisted of three owners, five parcels and a taxable value of \$399,726.

On December 5, 2003, the Acquisition and Restoration Council moved this project to Group A of the 2004 Florida Forever Priority List.

## **2004**

On December 3, 2004, the Acquisition and Restoration Council approved a 658.3-acre deletion to the project boundary. The deletion consisted of four parcels with a taxable value of \$541,781. The project was moved to Group B of the 2005 Florida Forever Priority List.

## **2005**

On December 9, 2005, the Acquisition and Restoration Council moved this project to Group A of the 2006 Florida Forever Priority List.

## **2006**

On August 11, 2006, the Acquisition and Restoration Council approved a fee-simple, 713-acre addition to the project boundary. It was sponsored by the Division of Recreation and Parks in coordination with the City of Jacksonville Preservation Project and consisted of 41 ownerships, 50 parcels and a taxable value of \$4,180,827. The Division of Recreation and Parks will manage the addition (except for 24.75 acres in Component 11, owned by Hughes) which will be managed by the City of Jacksonville. The parcels have been designated as essential.

## **2011**

On December 9, 2011, the Acquisition and Restoration Council placed this project in the Partnerships and Regional Incentives category.

On December 20, 2011, the North Florida Land Trust acquired 7.14 acres and created Big Talbot Island Preserve.





**2012**

On December 13, 2012, the North Florida Land Trust acquired 442.67 acres in Big Talbot Island Preserve.

**2013**

On June 3, 2013, the City of Jacksonville acquired Seaton Creek Historic Preserve (857.88 acres), of which 186 acres are within the project boundary.

On September 9, 2013, the North Florida Land Trust acquired Noble Enge Jr. Preserve (410.76 acres) as a donation.

**2014**

On April 11, 2014, the Acquisition and Restoration Council approved the deletion of 888.46 acres from the project.

**2015**

On March 26, 2015, the North Florida Land Trust acquired 1.23 acres in Big Talbot Island Preserve.

On December 21, 2015, the North Florida Land Trust acquired Nassau River Marshes Preserve (2,586.44 acres), of which 1,163.51 acres are within the project boundary.

**2016**

On March 3, 2016, the North Florida Land Trust acquired 6.5 acres and created Bogey Creek Preserve.

On April 22, 2016, the North Florida Land Trust acquired 598.51 acres in Big Talbot Island Preserve.

On December 5, 2016, the North Florida Land Trust acquired 6.43 acres in Big Talbot Island Preserve.

**2017**

On October 5, 2017, the North Florida Land Trust acquired 62.5 acres in Bogey Creek Preserve.

**2022**

DEP acquired in fee 239.83 acres from The Trust for Public Land that will be managed as part of Pumpkin Hill Creek Preserve State Park.

**Coordination**

The Nature Conservancy is an intermediary in the project. Resolutions in support of this project include St. Johns River Water Management District in support of a shared acquisition. The St. Johns River Water Management District, Office of Resilience and Coastal Protection, Florida Communities Trust and the City of Jacksonville are acquisition partners.

**Management Policy Statement**

The primary goals of management of the Pumpkin Hill Creek project are to conserve, protect, manage, and/or restore important ecosystems to enhance or protect significant surface water, coastal, recreational, timber, fish or wildlife resources; to provide areas, including recreational trails, for natural resource-based recreation; and to preserve significant archaeological or historical sites.





**Manager(s)**

The Division of Recreation and Parks, St. Johns River Water Management District, City of Jacksonville and the federal government all manage lands within the project boundary.

**Management Prospectus**

**Qualifications for State Designation**

The Pumpkin Hill Creek project includes uplands centrally located in the Nassau River-St. Johns River Marshes Aquatic Preserve. The project qualifies as a state buffer preserve because it will protect uplands important to the hydrology of the sensitive tidal marshes of the aquatic preserve.

**Conditions Affecting Intensity of Management**

Pumpkin Hill Creek Project generally includes lands that are “low-need” tracts, requiring basic resource management and protection.

**Management Implementation, Public Access, Site Security and Protection of Infrastructure**

Long-range plans for this project will generally be directed toward restoring disturbed areas to (or close to) their original conditions, as well as protecting rare and imperiled species. An all-season burning program will use existing roads, black lines, foam lines and natural breaks to contain fires whenever possible. Infrastructure will be in disturbed areas and will be the minimum needed for management and public access.

**Revenue-generating potential**

Portions of this project are composed of manageable pinelands that could be used to help offset operational costs. Any estimate of the revenue from the harvest of these pinelands depends upon a detailed assessment of the value of the timber and upon the amount of harvesting that is consistent with protection of natural resources on this project. No revenue is expected to be generated for some years.

**Cooperators in management activities**

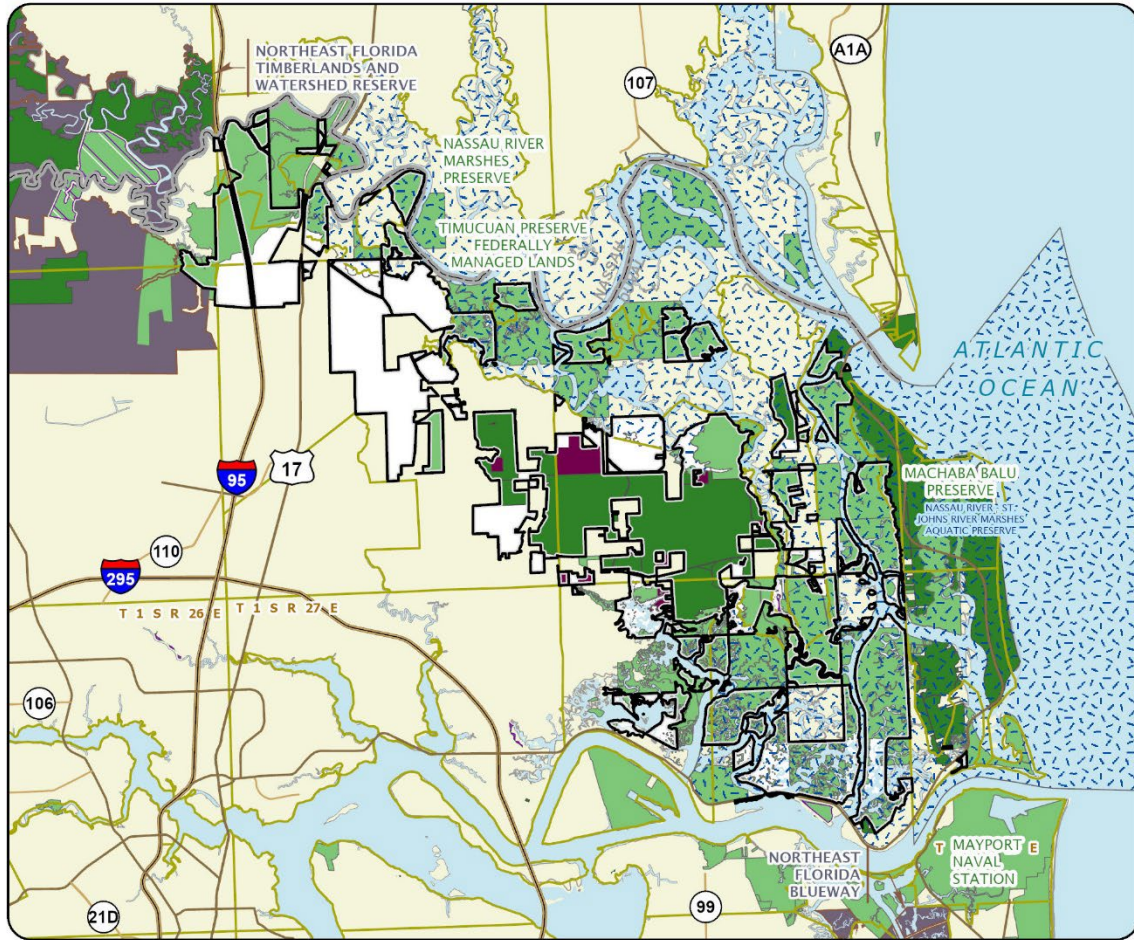
The St. Johns River Water Management District will cooperate in managing the project.

Management Cost Summary

DRP	Startup	Recurring
Source of Funds	CARL/LATF	not provided
Salary	\$62,079.65	not provided
OPS	\$28,631.85	not provided
Expense	\$24,762.68	not provided
OCO	\$0	not provided
Special	\$0	not provided
FCO	\$50,000	not provided
TOTAL	\$165,474.18	not provided

Source: Management Prospectus as originally submitted





### PUMPKIN HILL CREEK

#### DUVAL COUNTY

