

# St. Joe Timberland

## Climate Change Lands

Bay, Franklin, Gadsden, Gulf, Leon, Liberty, Wakulla, Walton and Washington Counties

<i>Year Added to Priority List</i>	2000
<i>Project Acres</i>	113,716
<i>Acquired Acres</i>	61,895
<i>Cost of Acquired Acres</i>	\$77,884,595
<i>Remaining Project Acres</i>	51,821
<i>2021 Assessed Value of Remaining Acres</i>	\$97,923,583

### Purpose for State Acquisition

The St. Joe Timberland project will consolidate the St. Joe Company ownerships already included in other projects, thus helping to preserve large undeveloped tracts of land for native plants and animals in north Florida. The project will provide the public with an opportunity to experience and recreate in large natural areas in the Florida Panhandle.

### General Description

The St. Joe Timberland project includes the St. Joe Company ownerships in the following projects: Apalachicola River (Sweetwater Creek - 7,040 acres, Gadsden Glades - 360 acres and Aspalaga Landing - 600 acres); Brevard Coastal Scrub Ecosystem (Tico site - 1,780 acres); Dickerson Bay/Bald Point (Bald Point site - 3,840 acres); Florida's First Magnitude Springs (River Sink - 40 acres and St. Marks - 700 acres springs sites); Lake Powell (600 acres); St. Joseph Bay Buffer (250 acres); Sand Mountain (1,680 acres); Tate's Hell/Carrabelle Tract (16,000 acres); Wacissa/Aucilla River Sinks (19,840 acres); and Wakulla Springs Protection Zone (2,240 acres). The sites lie in the Panhandle from Bay and Washington counties to Taylor County, except for the Tico site in Brevard County. They include samples of almost all the natural communities in north and central Florida, from scrub to swamps and springs.



FNAI Element Occurrence Summary

<b><u>FNAI Elements</u></b>	<b><u>Score</u></b>
<i>Florida torreyi</i>	G1/S1
Gopher tortoise	G3/S3
Swallow-tailed kite	G5/S2
Florida black bear	G5T4/S4
<i>Apalachicola rosemary</i>	G1/S1
<i>Chapman's rhododendron</i>	G1/S1
<i>Gholson's blazing star</i>	G1/S1
<i>pinewoods aster</i>	G1?/S1?
Big Blue Spring cave crayfish	G1/S1
Woodville karst cave crayfish	G1/S1
<i>Apalachicola wild indigo</i>	G2/S1
Florida Big Bend cave amphipod	G1G2/S1S2

**Public Use**

The sites are designated for various public uses. The project may also help complete the Florida National Scenic Trail, a statewide non-motorized trail that crosses several Florida Forever project sites.

**Acquisition Planning**

**1999**

On December 9, 1999, the Land Acquisition and Management Advisory Council approved the creation of the St. Joe Timberland project and added it to the Conservation and Recreational Lands Priority List. The project was sponsored by the St. Joe Company, the Division of State Lands and The Nature Conservancy, and initially consisted of individual tracts owned by St. Joe Company within existing projects. Other sites will be proposed for addition to the project. Approval was given to add an additional 1,318 acres (18 acres to the Wacissa/Aucilla River Sinks project and approximately 1,300 acres to the Apalachicola River Project – Lake Wimico site) to the project boundary as essential parcels. The initial project consisted of approximately 56,218 acres. The Northwest Florida Water Management District has acquired most of the Sand Mountain site.

**2000**

On August 22, 2000, the Acquisition and Restoration Council approved a fee-simple, 12,360-acre addition, known as Lake Wimico site in Gulf County, to the project boundary. It was sponsored by the Florida Fish and Wildlife Conservation Commission and consisted of one owner, the St. Joe Company.

Also on August 22, 2000, the Acquisition and Restoration Council approved a fee-simple, 1,592-acre addition, known as Snipe Island, to the project boundary. It was sponsored by The Nature Conservancy and consisted of one owner, the St. Joe Company.

**2001**

On July 12, 2001, the Acquisition and Restoration Council approved a fee-simple, 22,260-acre addition to the project boundary. It was sponsored by the Florida Fish and Wildlife Conservation Commission and consisted of one owner, the St. Joe Company. About 19,445 acres are in Jefferson County, with the





remainder in Taylor County. The Acquisition and Restoration Council also approved a fee-simple, 2,560-acre addition to the St. Joseph Bay buffers project boundary. It was sponsored by the Florida Fish and Wildlife Conservation Commission and consisted of one owner, the St. Joe Company. The property is in Gulf County.

## **2002**

On April 25, 2002, the Acquisition and Restoration Council approved a fee-simple, 2,194-acre addition, known as the Tiger Hammock Conservation Area, to the project boundary. It was sponsored by Dr. John Epler and consisted of one owner, the St. Joe Company.

The Acquisition and Restoration Council also approved a fee-simple, 1,656-acre addition, known as Crooked Creek (1,365 acres in Gadsden and Liberty counties) and Short Creek (291 acres in Liberty County), to the project boundary. It was sponsored by The Nature Conservancy and consisted of one owner, the St. Joe Company.

## **2003**

On June 6, 2003, the Acquisition and Restoration Council approved a fee-simple, 49,565-acre addition, known as St. Vincent Sound to Lake Wimico, to the project boundary in Gulf and Franklin counties. It was sponsored by The Nature Conservancy and consisted of one owner, the St. Joe Company.

## **2004**

On June 4, 2004, the Acquisition and Restoration Council approved a fee-simple, 10,444-acre addition in Jefferson County, known as the Flint Rock tract, to the project boundary. It was sponsored by The Nature Conservancy and consisted of one owner, the St. Joe Company.

## **2006**

On May 1, 2006, the U.S. Forest Service acquired the St. Joe Tract (320 acres).

## **2008**

In January 2008, The Nature Conservancy acquired 10,905 acres known as Flint Rock.

## **2010**

On April 6, 2010, the Florida Fish and Wildlife Conservation Commission acquired approximately 2,836 acres of the Flint Rock site from The Nature Conservancy for \$5,246,371.

## **2011**

On December 9, 2011, the Acquisition and Restoration Council voted to place this project in the Climate Change Lands category of Florida Forever.

## **2012**

On April 20, 2012, the Acquisition and Restoration Council approved moving the Flint Rock tract to the Wacissa/Aucilla River Sinks Florida Forever project, as this was no longer in St. Joe ownership.

## **2014**

On September 23, 2014, the Suwannee River Water Management District acquired Lower Aucilla (119 acres) conservation easement by donation, of which 75 acres are within the project boundary.





## **2016**

On October 21, 2016, the Acquisition and Restoration Council transferred 2,456 acres from the Franklin County sites of this project to the Dickerson Bay/Bald Point project, as part of the consideration for the Bluffs of St. Teresa Florida Forever proposal.

## **2017**

On April 21, 2017, the Acquisition and Restoration Council voted to add 879.5 acres of St. Joe land in two parcels in south Leon County to the project, with a tax-assessed value of \$186,620. This addition was proposed by the Division of Recreation and Parks. The Division of Recreation and Parks will manage the western parcel as part of Edward Ball Wakulla Springs State Park and the Florida Forest Service will manage the eastern parcel as part of Wakulla State Forest.

On August 18, 2017, the Acquisition and Restoration Council voted to add an 18-acre inholding in Franklin County within the Box-R Wildlife Management Area, surrounded by BOT-owned managed conservation lands, to the project. The addition had a tax-assessed value of \$83,800. This fee-simple boundary amendment was submitted by the Florida Fish and Wildlife Conservation Commission.

In 2017, 10,445 acres in this project were acquired using Florida Forever program funding.

## **2019**

On October 18, 2019, the Acquisition and Restoration Council approved the addition of 564 acres in Franklin County to the St. Joe Timberland Florida Forever project. If acquired, it would be managed by the Florida Fish and Wildlife Conservation Commission as part of the Apalachicola River Wildlife and Environmental Area.

## **2020**

In September 2020, two parcels containing 578.23 acres were acquired at a cost of \$720,000, of which \$200,000 was provided by the Fish and Wildlife Foundation of Florida. The land will be managed by the Florida Fish and Wildlife Conservation Commission as part of the Apalachicola River Wildlife and Environmental Area.

The 20,146-acre Lake Wimico addition was acquired via donation from The Nature Conservancy which acquired the property with grant funding from the National Fish and Wildlife Foundation. Approximately 13,945 acres were added to the Apalachicola River Wildlife and Environmental Area, and the remaining acres (6,194) were added to Box-R Wildlife Management Area, both of which are managed by the Florida Fish and Wildlife Conservation Commission.

## **2021**

On December 10, 2021, the Acquisition and Restoration Council approved an addition of 370 acres in Franklin County to the project boundary.

## **2022**

On August 12, 2022, the Acquisition and Restoration Council transferred the Wacissa/Aucilla River Sinks site (47,229 acres) from the St. Joe Timberland project to the Aucilla/Wacissa Watershed project, which was created on the same day.



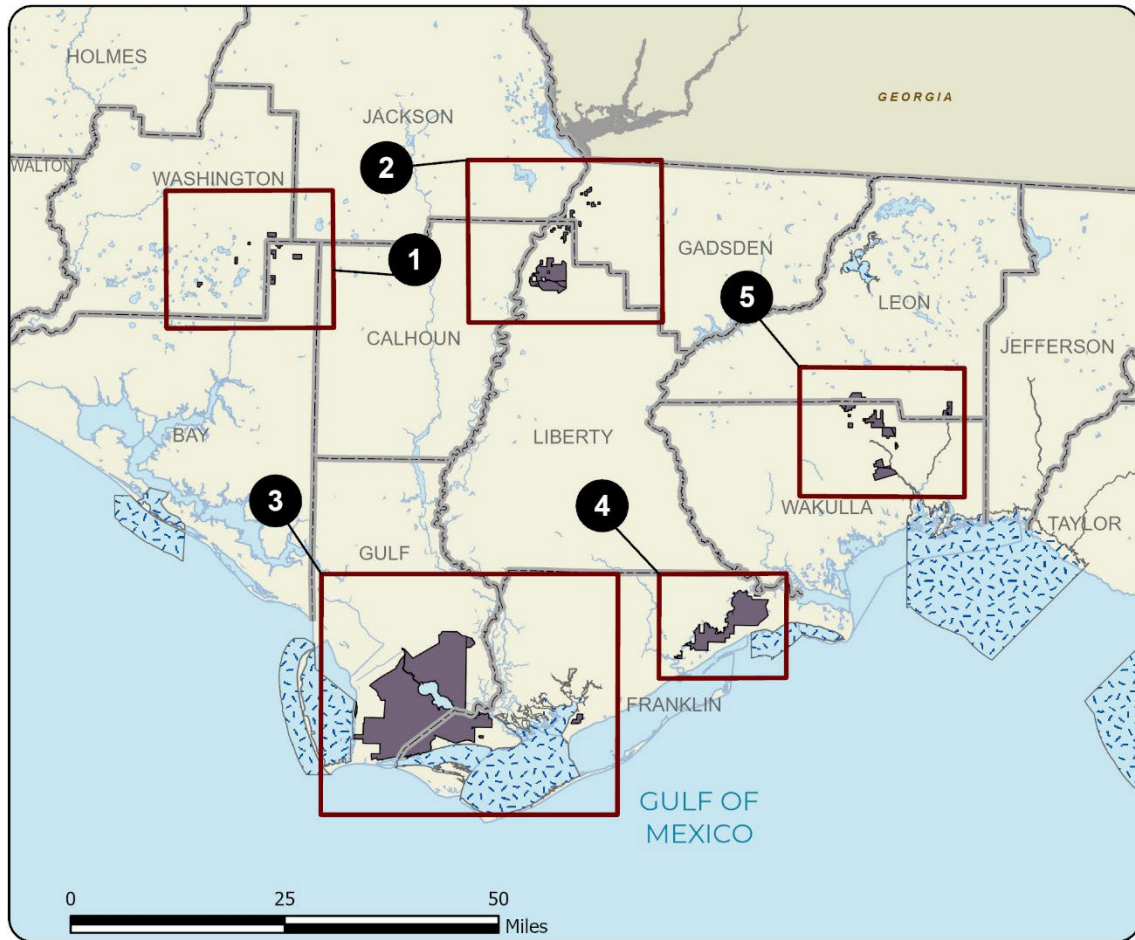


DEP acquired, in fee, 376 acres in Franklin County along Whiskey George Creek that will be managed as part of Tate's Hell State Forest.

### Coordination

The Nature Conservancy has been an acquisition intermediary for this project.



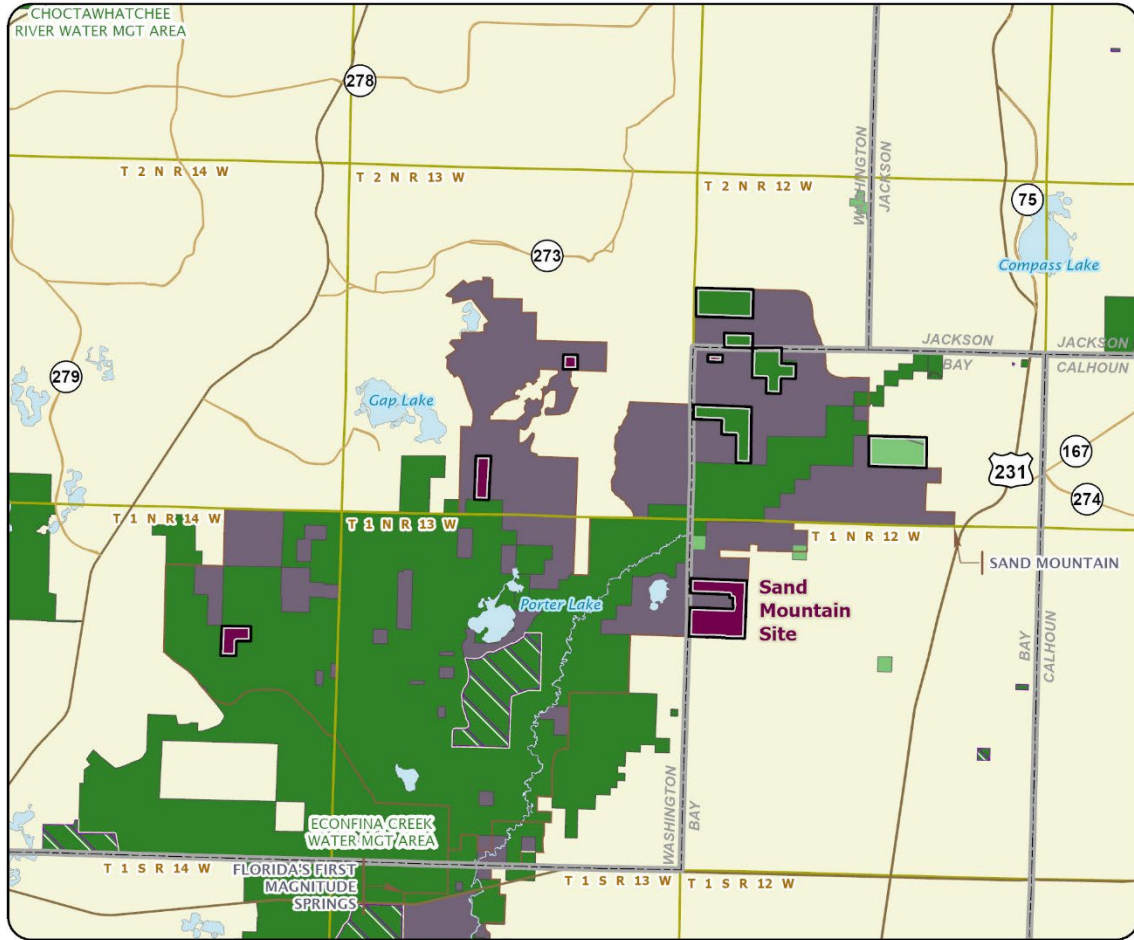


### ST. JOE TIMBERLAND: OVERVIEW

#### BAY, FRANKLIN, GADSDEN, GULF, JEFFERSON, LEON, LIBERTY, TAYLOR, WAKULLA, AND WASHINGTON COUNTIES

- Map 1 Sand Mountain Site
- Map 2 Apalachicola River - Aspalaga Landing Site
- Map 2 Apalachicola River - Crooked/Short Creek Site
- Map 2 Apalachicola River - Gadsden Glades Site
- Map 2 Apalachicola River - Sweetwater Creek Site
- Map 3 Holt Trustee Tract Site
- Map 3 Lake Wimico Site
- Map 3 St. Joseph Bay Buffer Site
- Map 3 St. Vincent Sound-to-Lake Wimico Ecosystem Site
- Map 3 Whiskey George Creek Timbers Site
- Map 4 Tate's Hell/Carrabelle Tract Site
- Map 5 River Sink Spring Site
- Map 5 St. Marks Springs Site
- Map 5 Wakulla Springs Protection Zone Site

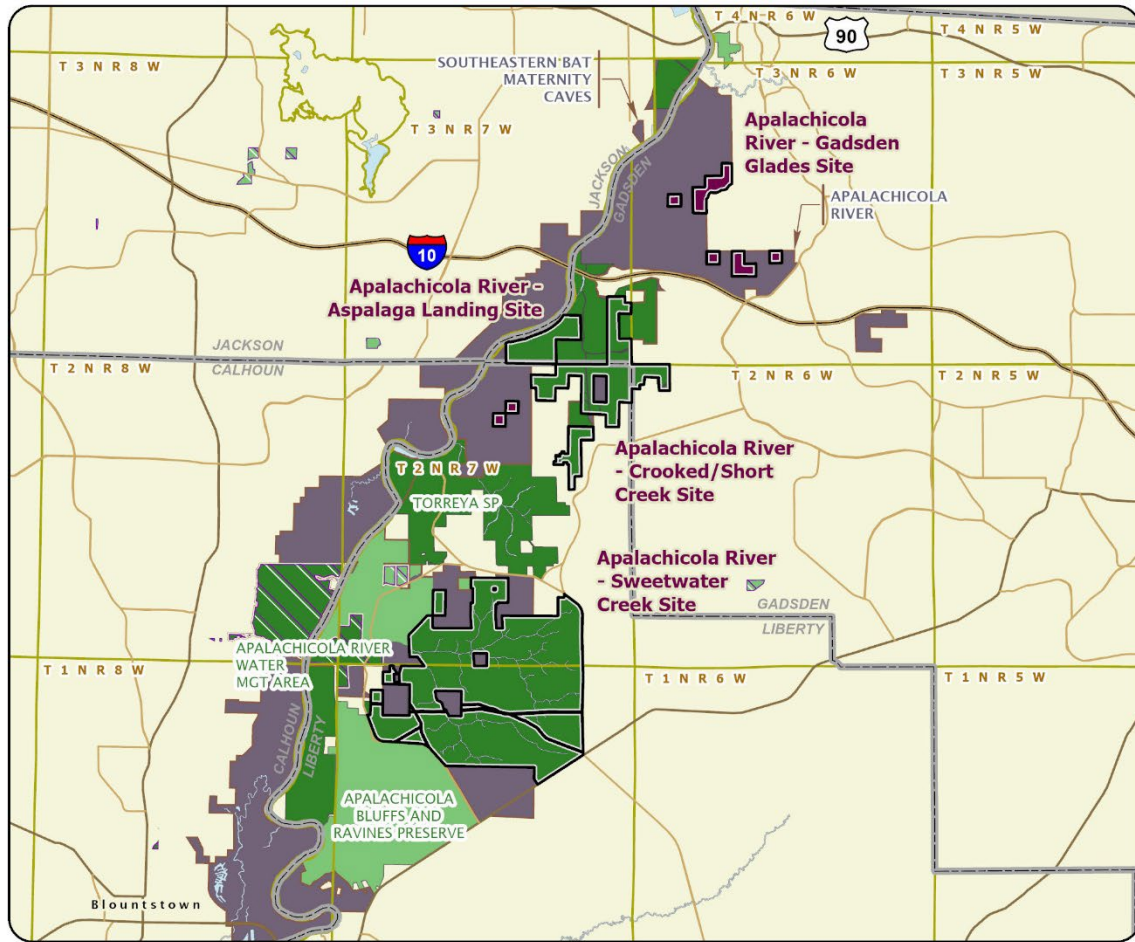




ST. JOE TIMBERLAND: MAP 1

BAY AND WASHINGTON COUNTIES



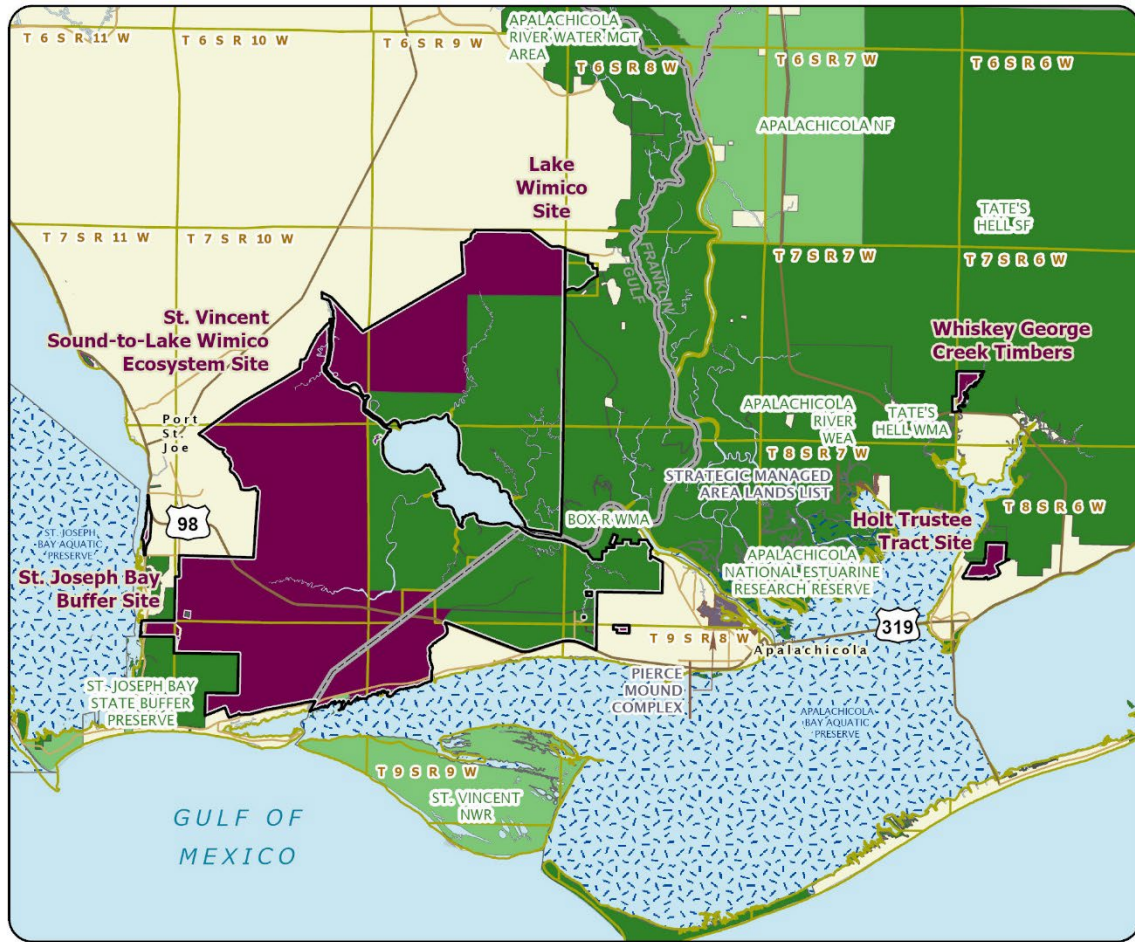


ST. JOE TIMBERLAND: MAP 2

GADSDEN AND LIBERTY COUNTIES



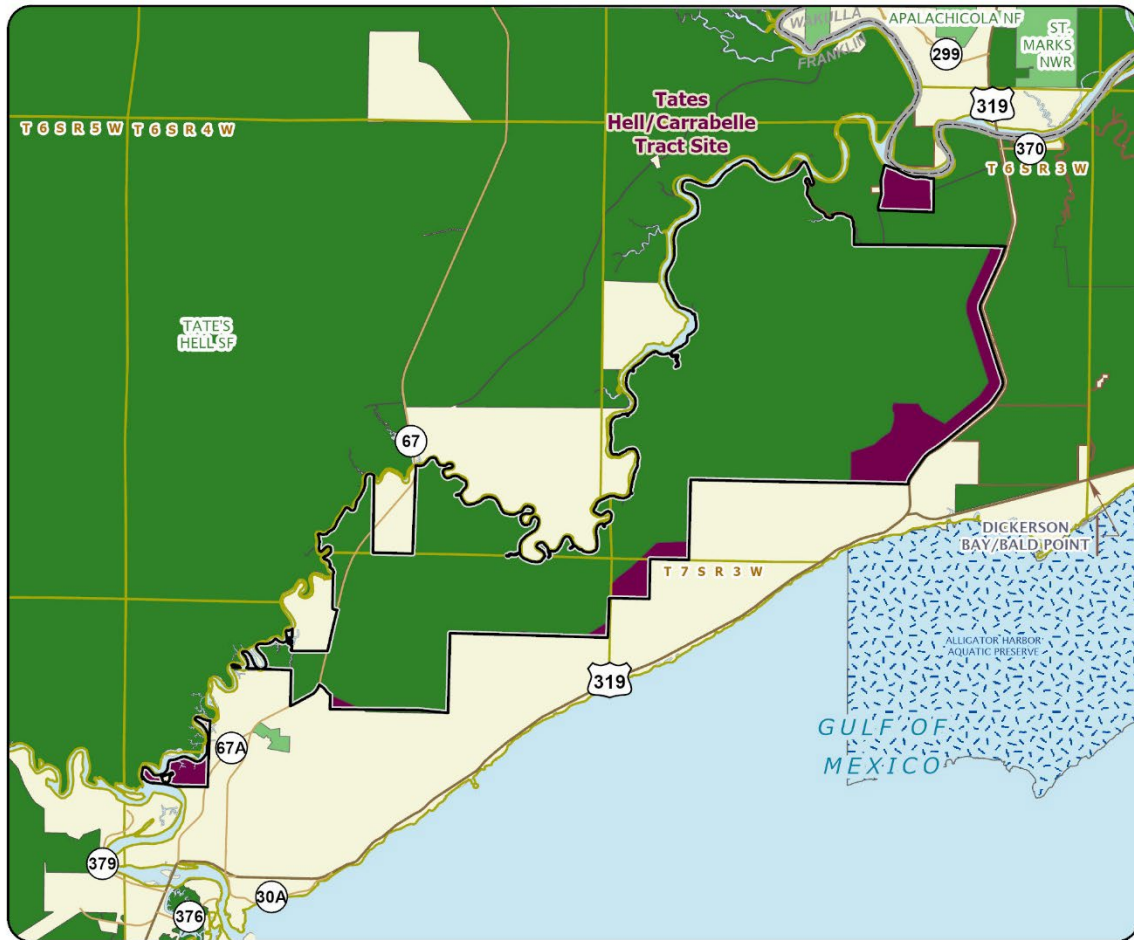




ST. JOE TIMBERLAND: MAP 3

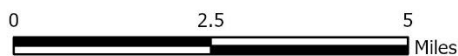
FRANKLIN AND GULF COUNTIES

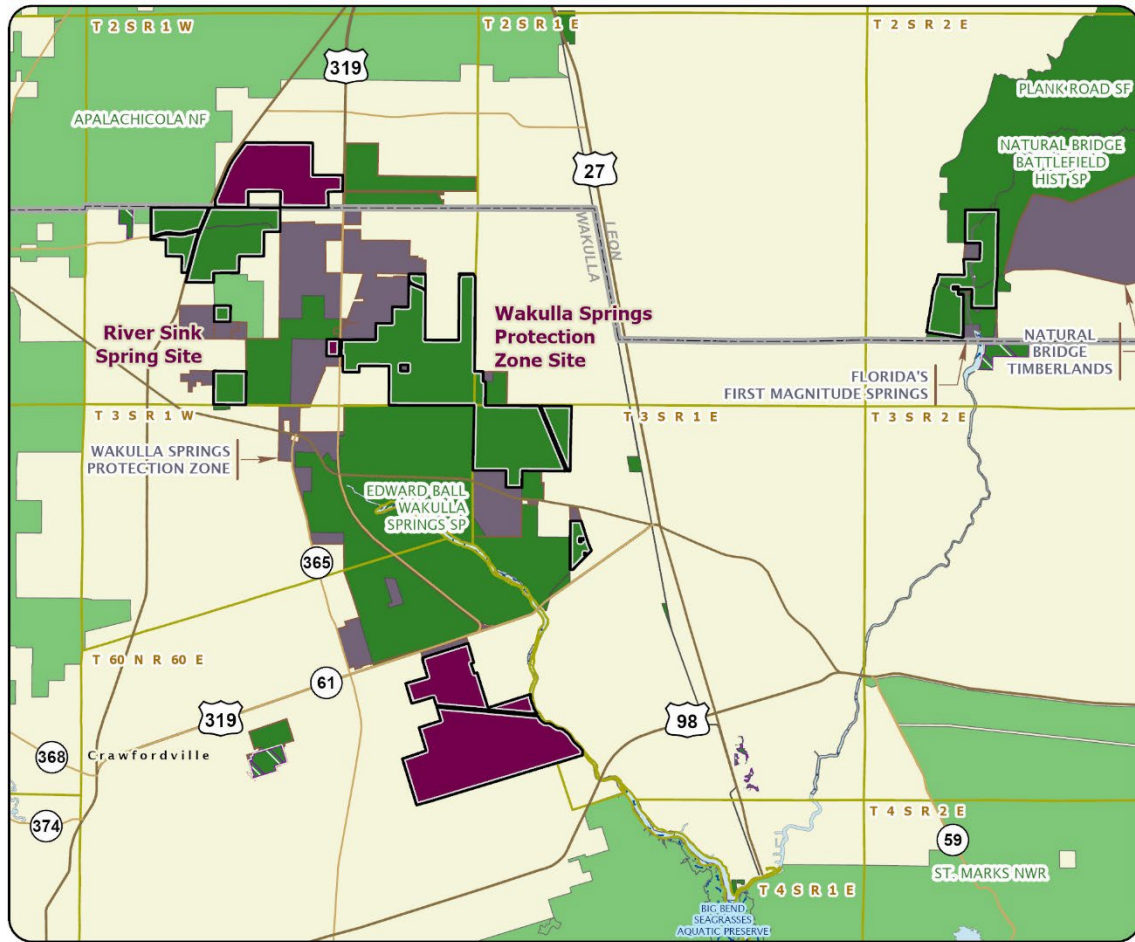




ST. JOE TIMBERLAND: MAP 4

FRANKLIN COUNTY





ST. JOE TIMBERLAND: MAP 5

WAKULLA AND LEON COUNTIES

