

# Strategic Managed Area Lands List

## Critical Natural Lands

Alachua, Bay, Broward, Clay, Collier, Columbia, Dixie, Flagler, Franklin, Gadsden, Gilchrist, Glades, Hamilton, Hernando, Lafayette, Lake, Levy, Manatee, Orange, Palm Beach, Putnam, Santa Rosa, St. Lucie, Taylor, Union, Volusia and Wakulla Counties

<i>Year Added to Priority List</i>	<i>2018</i>
<i>Project Acres</i>	<i>12,347</i>
<i>Acquired Acres</i>	<i>504</i>
<i>Cost of Acquired Acres</i>	<i>\$3,132,208</i>
<i>Remaining Project Acres</i>	<i>11,843</i>
<i>2021 Assessed Value of Remaining Acres</i>	<i>\$62,325,396</i>

### Purpose for State Acquisition

Acquisition of these specific inholding parcels would enhance or facilitate management of properties already under public ownership. Collectively, acquisition of these fee simple parcels will meet the Florida Forever goal of enhancing the coordination and completion of land acquisition projects (essential natural resources, ecosystem service parcels and connecting linkage corridors as identified and developed by the best available scientific analysis).

### General Description

The Strategic Managed Areas Lands List, sponsored by the Division of Recreation and Parks, DEP's Office of Greenways and Trails, DEP's Office of Resilience and Coastal Protection, Florida Forest Service and the Florida Fish and Wildlife Conservation Commission, is a collection of single-owner parcels statewide that would augment or improve management of existing state-managed conservation lands. The parcels included have been identified as part of the optimum management boundary within the approved management plans of state parks, state trail corridors, state forests and wildlife management/environmental areas. None of these parcels are located within the boundary of another Florida Forever project on the priority list. The largest parcel in this project would become part of Blackwater River State Forest in Santa Rosa County. The smallest is 2 acres of beachfront land on the Atlantic Ocean that would become part of the Mizell Johnson State Park in Broward County. Over 7,000 acres of these proposals are in Strategic Habitat Conservation Areas.

The properties identified for better management for the Division of Recreation and Parks are properties adjoining existing state parks or railroad rights of way identified by DEP's Office of Greenways and Trails that would extend or further connect existing recreation trails such as the existing Palatka to Lake City Corridor or the new Georgia to Cross City Corridor.



Properties chosen for better management by the Florida Forest Service augment existing state forests. Properties that would augment Florida Fish and Wildlife Conservation Commission lands would improve the management of such areas as the Andrews Wildlife Management Areas in Levy County or the Lafayette Forest Wildlife and Environmental Area in Lafayette County.

Listed species element occurrences were reported by the Florida Natural Areas Inventory by parcel. A total of 48 listed species were identified overall, but some species may be counted more than once as this is a statewide, multi-parcel, multi-county project. The maximum number of listed species at one site was seven.

FNAI Element Occurrence Summary

<b><u>FNAI Elements</u></b>	<b><u>Score</u></b>
Florida panther	G5T1/S1
Red-cockaded woodpecker	G3/S2
Gopher tortoise	G3/S3
Florida black bear	G5T4/S4
<i>fragrant prickly apple</i>	G1/S1
North Florida spider cave crayfish	G1G2/S1S2
A mayfly	G1G2/S1S2
<i>beautiful pawpaw</i>	G2/S2
Suwannee alligator snapping turtle	G2/S2
<i>pinewoods dainties</i>	G4T2/S2
<i>narrowleaf naiad</i>	G3/S2
<i>Florida goldenaster</i>	G3/S3

**Public Use**

Because these lands are to be acquired in full fee, they would increase the size of conservation or recreation areas and enhance the experience of such lands for members of the public. The public use would be predicated on the existing management of the adjoining areas. The parcels on this list all help to enhance essential natural resources, providing better operational or environmental management. The resource-based potential public use of the project is generally high, as the various parcels acquired in fee title can accommodate such activities as hiking, natural resource appreciation and education, picnicking, camping, bicycling and horseback riding. Depending on management emphasis, fishing and hunting is also supportable.

**Acquisition Planning**

As the application requires, the owners of parcels in this project were notified by mail that the Acquisition and Restoration Council would be considering a Florida Forever proposal that included their parcel in the boundary, and that if or when they wished to sell their parcel, state acquisition could be possible using Florida Forever funding. They were also made aware that they could remove their parcels from the project’s boundary at any time, but that removing the parcel from the boundary would make it ineligible for state acquisition. Florida statute requires that they send a certified letter requesting removal to the Division of State Lands.





## 2018

In October 2018, this project was approved by the Acquisition and Restoration Council. All the parcels within the boundary are considered essential. The parcels are proposed for fee simple acquisition.

## 2019

In September 2019, 10 parcels under a single ownership containing 120.19-acres (Florida Fish and Wildlife Conservation Commission Parcel One/Florida Fish and Wildlife Conservation Commission-1) were acquired fee simple from Zemel Family Ventures, LLC with funding from the U.S. Fish and Wildlife Service (79 percent) and Florida Forever funding (21 percent). The property will be managed by the Florida Fish and Wildlife Conservation Commission as part of Fred C. Babcock/Cecil M. Webb Wildlife Management Area.

## 2020

On August 21, 2020, the Acquisition and Restoration Council approved a Florida Fish and Wildlife Conservation Commission addition of 249.5 acres in Hernando County (Chassahowitzka Wildlife Management Area) and Palm Beach County (J.W. Corbett Wildlife Management Area) to the project boundary.

The Acquisition and Restoration Council also approved a Florida Forest Service addition of 41 acres in Lake County (Seminole State Forest) to the project boundary. One parcel was simultaneously removed (Florida Forest Service Parcel Seven - HAU II LLC, 473.28 acres) to maintain a list of 10 agency parcels.

In 2020, Division of Recreation and Parks Parcels Four, Five and Eight containing a total of 66.34 acres were acquired. Parcel Four (River Rise State Park) contains 17.10 acres, Parcel Five (Silver Springs State Park) contains 9.86 acres and Parcel Eight (Dade Battlefield Historic State Park) contains 39.38 acres and will all be managed by the Division of Recreation and Parks as part of the adjacent managed areas.

## 2021

On April 9, 2021, the Acquisition and Restoration Council approved a Division of Recreation and Parks addition of 184 acres in Columbia and Sumter counties, and a reduction of 91 acres in Washington County. The Acquisition and Restoration Council also approved a Florida Fish and Wildlife Conservation Commission addition of 158 acres in Charlotte County and a reduction of 40 acres in Taylor County.

On August 4, 2021, the Acquisition and Restoration Council approved modifications to the project to include DEP's Office of Resilience and Coastal Protection, remove the limitation on the timing of boundary amendment proposals and increase the number of "ownerships" each agency could include within the project from 10 to 15.

On October 8, 2021, the Acquisition and Restoration Council approved a Division of Recreation and Parks addition of 2.86 acres in Flagler County and a DEP Office of Resilience and Coastal Protection addition of 198.51 acres in Charlotte County.





## **2022**

On July 27, 2022, 160 acres (Division of Recreation and Parks Martin, Revels and Porter) was purchased from the Alachua Conservation Trust and will be managed as part of River Rise Preserve State Park.

On August 12, 2022, the Acquisition and Restoration Council approved two Florida Fish and Wildlife Conservation Commission additions; one for 40.89 acres in Franklin County and one for 123 acres in Glades County.

On December 9, 2002, the Acquisition and Restoration Council approved a Florida Fish and Wildlife Conservation Commission addition of 297 acres in Gadsden County.

### **Coordination**

These parcels are eligible for Florida Forever program funding. While opportunities for partnerships may present themselves in the years ahead, Florida Forever is the primary funding source.

### **Management Policy Statement**

These acquisitions would fall under the management plan of the existing conservation lands and projects they would be attached to. These are parcels that will improve resource management of state conservation lands.

### **Manager(s)**

Each parcel would be managed by the applicable state agency manager as part of the site they are adjacent to. The managing agencies would be the Florida Forest Service, Florida Fish and Wildlife Conservation Commission, Division of Recreation and Parks, DEP's Office of Greenways and Trails and DEP's Office of Resilience and Coastal Protection.

### **Management Prospectus**

#### **Qualifications for State Designation**

What qualifies this fee simple project for state designation is the intent is to improve management efficiency and effectiveness of state-managed conservation lands for citizens, visitors, natural systems and wildlife by adding strategic parcels or ownerships to the management units. These additions will make for more seamless operation and maintenance at the various sites.

#### **Conditions Affecting Intensity of Management**

The conditions affecting intensity of management would vary by parcel, but would reflect those of the conservation land management unit contiguous with each parcel.

#### **Management Implementation, Public Access, Site Security and Protection of Infrastructure**

The timetable for implementing management and provisions for security and protection of infrastructure would become part of the general management of the larger management unit upon acquisition.

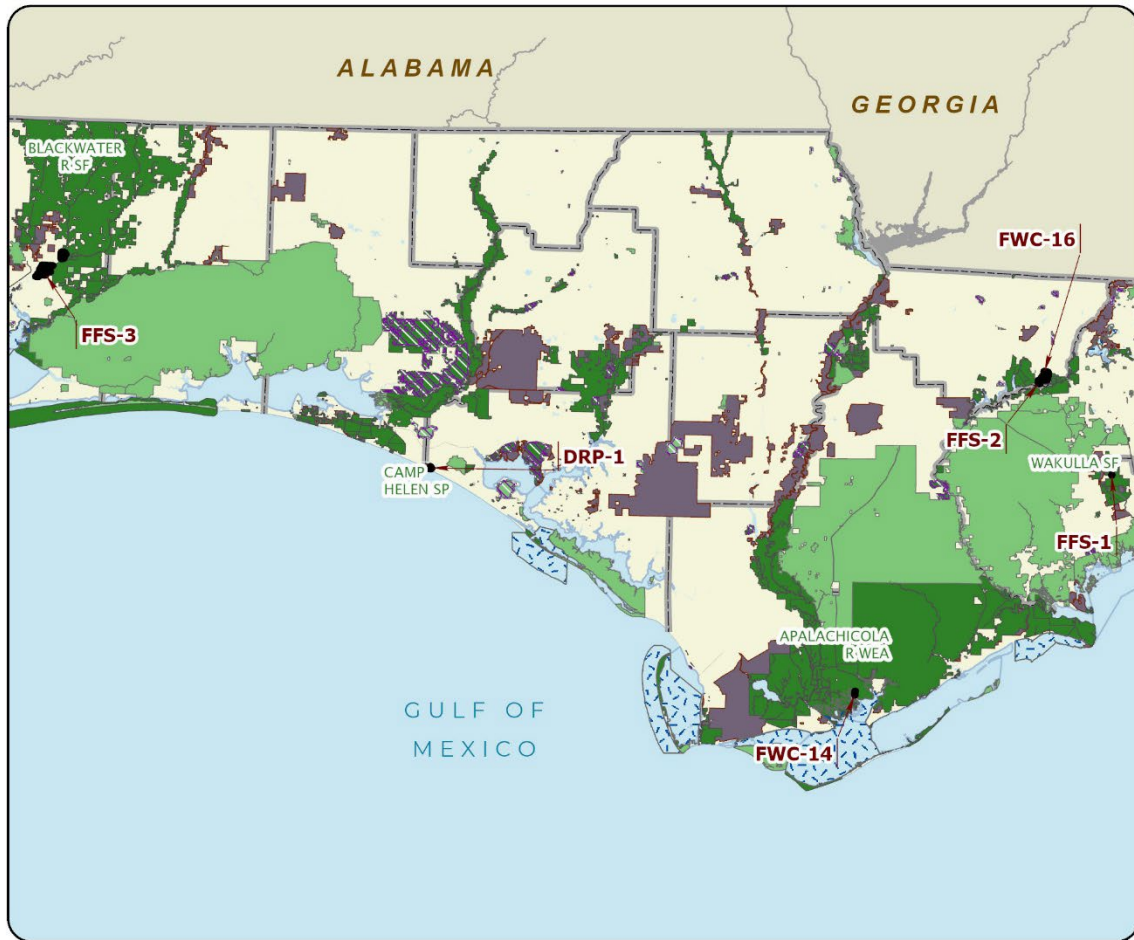




### **Revenue-generating Potential**

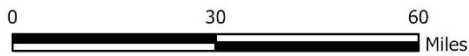
Revenue-generating potential for each parcel would vary, but management efficiencies from these acquisitions could result in a reduction of some management costs.



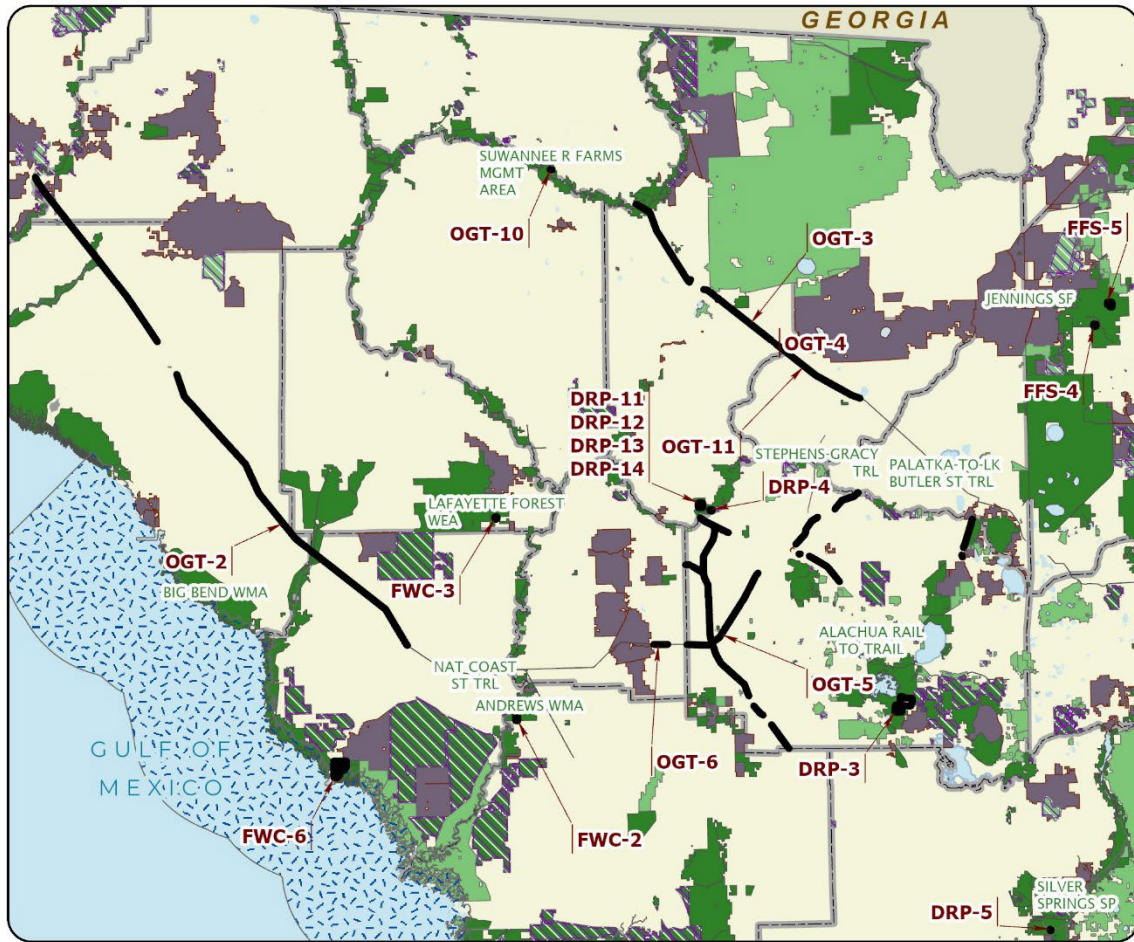


### STRATEGIC MANAGED AREA LANDS LIST: MAP 1

BAY, FRANKLIN, GADSDEN, SANTA ROSA, AND WAKULLA COUNTIES

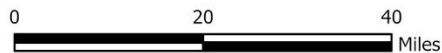


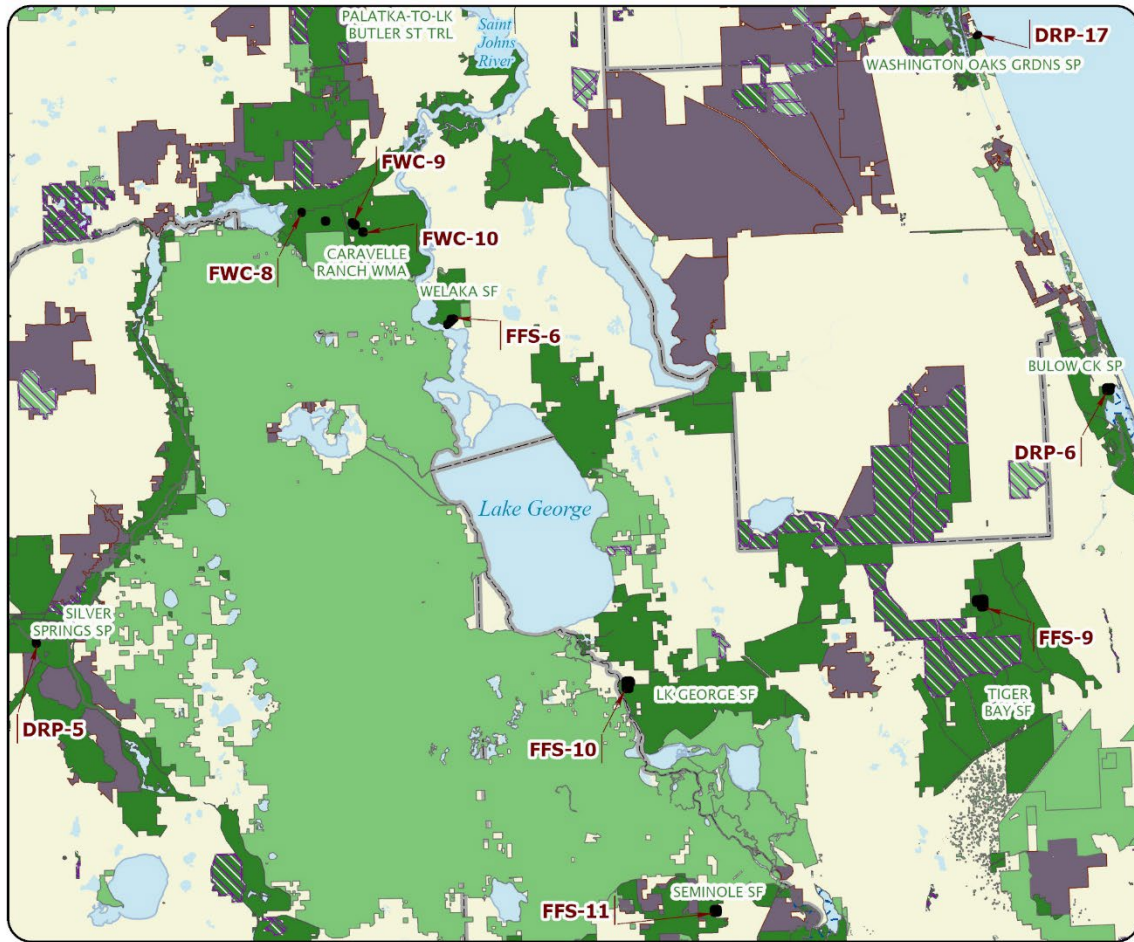




### STRATEGIC MANAGED AREA LANDS LIST: MAP 2

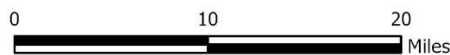
ALACHUA, CLAY, COLUMBIA, DIXIE, FLAGLER, GILCHRIST, HAMILTON, JEFFERSON, LAFAYETTE, LEVY, MARION, TAYLOR, AND UNION COUNTIES



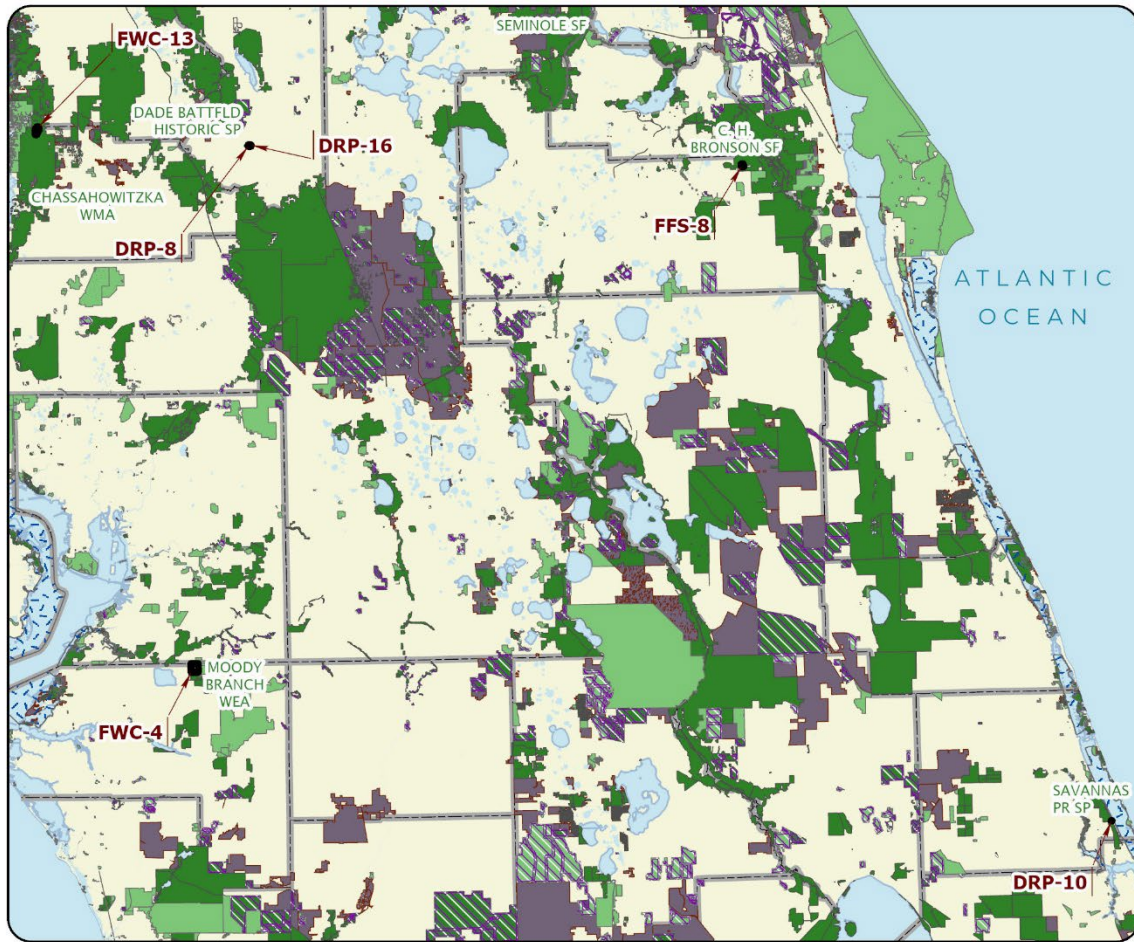


### STRATEGIC MANAGED AREA LANDS LIST: MAP 3

FLAGLER, LAKE, MARION, PUTNAM, AND VOLUSIA COUNTIES



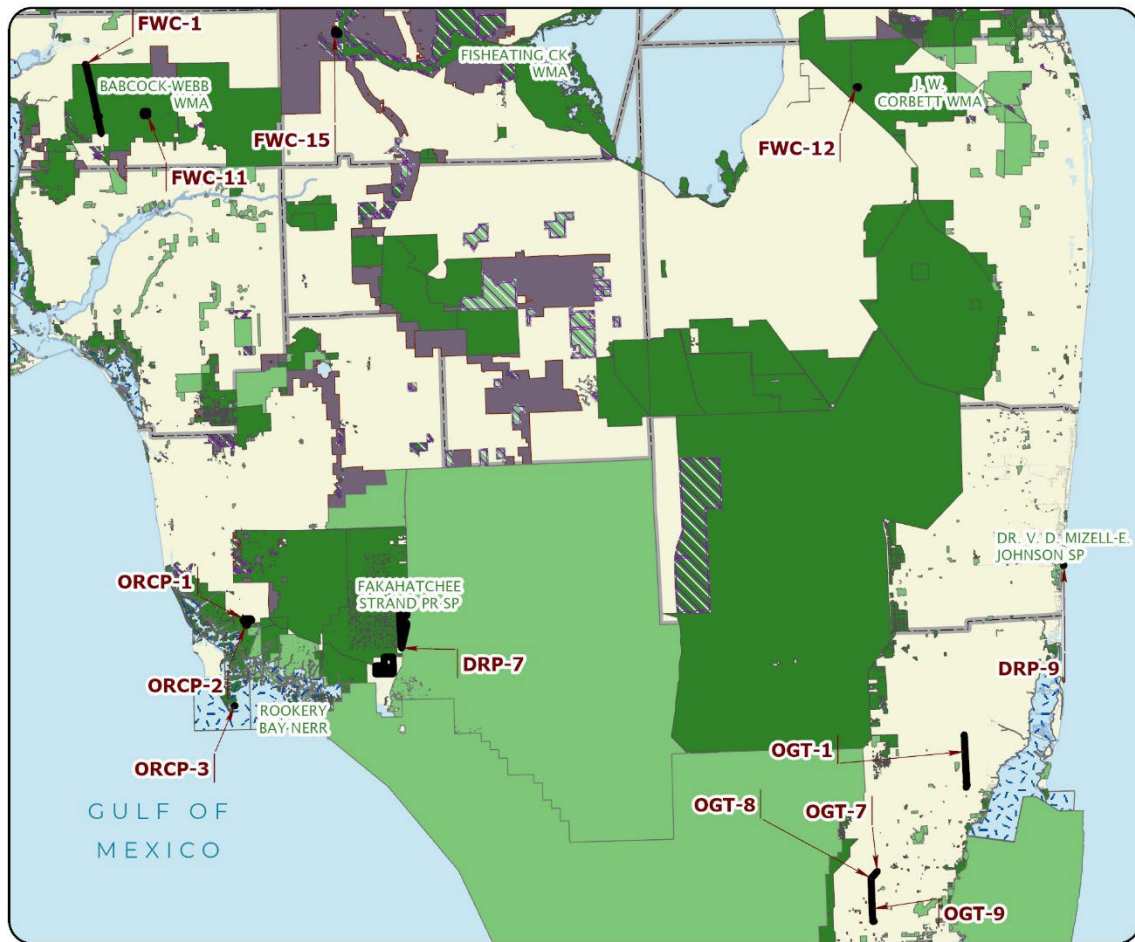




### STRATEGIC MANAGED AREA LANDS LIST: MAP 4

HERNANDO, MANATEE, ORANGE, ST. LUCIE, AND SUMTER COUNTIES





### STRATEGIC MANAGED AREA LANDS LIST: MAP 5

BROWARD, CHARLOTTE, COLLIER, GLADES, MIAMI-DADE, AND PALM BEACH COUNTIES

